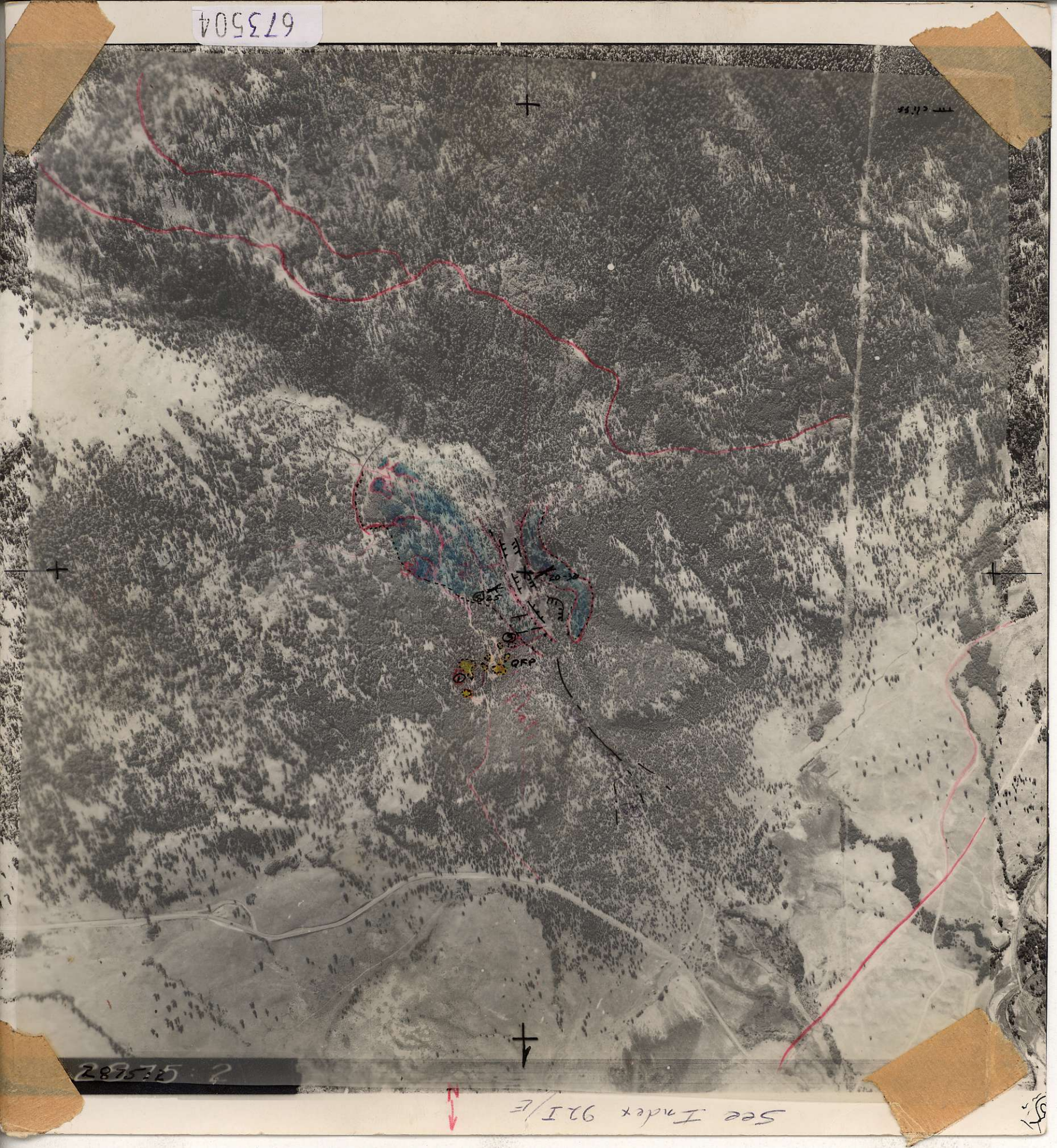


673504

673504



See Index 92I/E

289525 ?

51

- ① Situated between associated
Q.F.P. Many fractures random,
w F.C.X, pronounced vert
N 80° w fracturing - ^{near 2000} on 10°
- ② Very high sil dense green rock
Sil Tuff & Look like Bonaparte
- ③ Contact F.C. sil Tuff on And
Phy on South. Q.F.P. on
North Tuff in Tuff
- ④ Red & green and a And Phy
wk alt to chl. - persistent
N 10-30 W 60-80° NW dip
deposits
vert 850° dip N 43 E strike
deposits, calc on top. 1.1 ft in
W trend N 60 E strike
dip 25-30 north west
dip
6. Spatially Cyn. And, F.C. green

NARROW ANGLE

20 CHAINS = 1 INCH
(APPROX)

U.C. GOVERNMENT AIR PHOTOGRAPH
All Rights Reserved
Date of Exposure:

SEP 8 1960

Obtain reprints & tech data from
Air Division
Dept. of LANDS & FORESTS, Victoria, B.C.