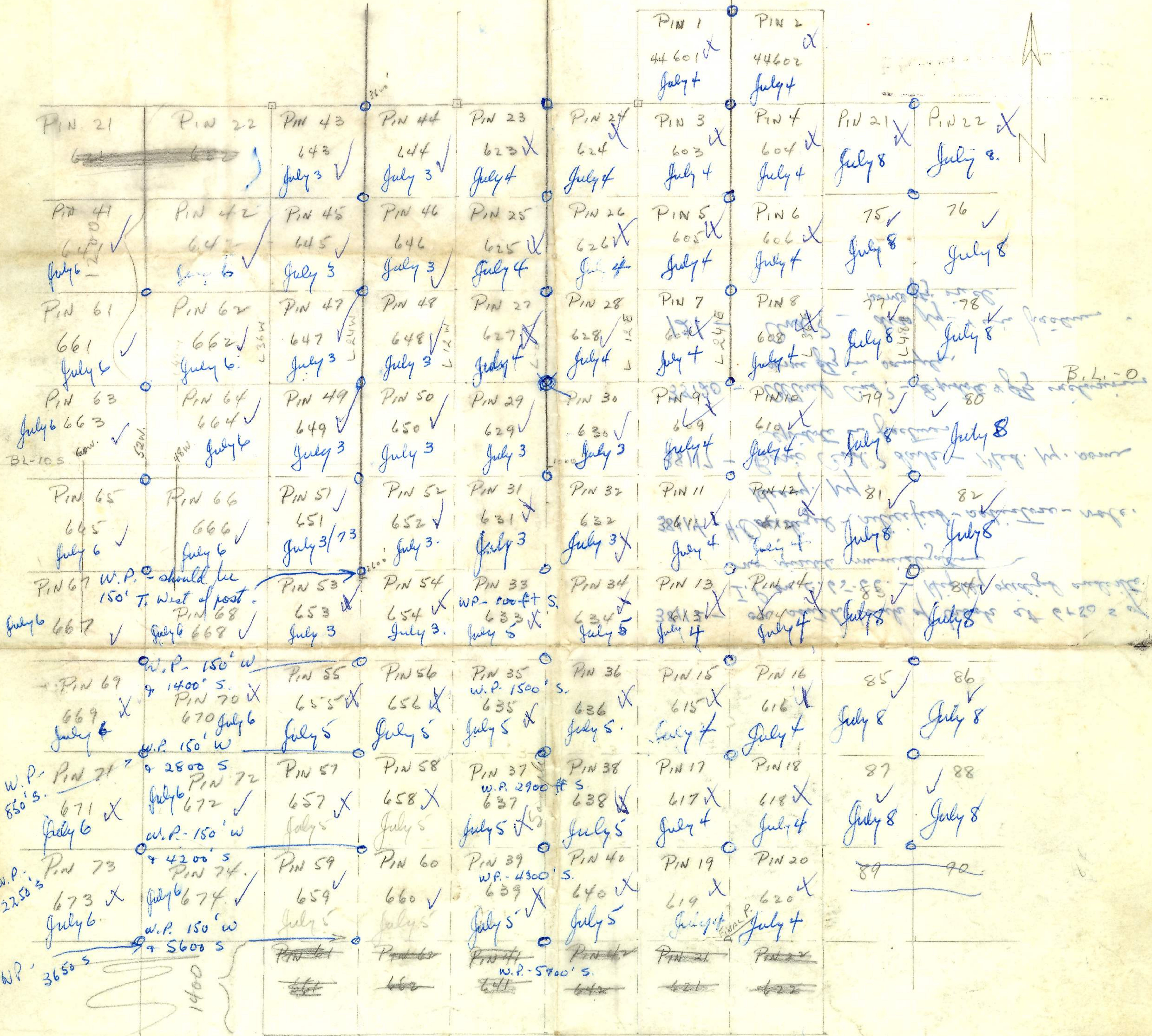


L-24W

L-0

L-24E



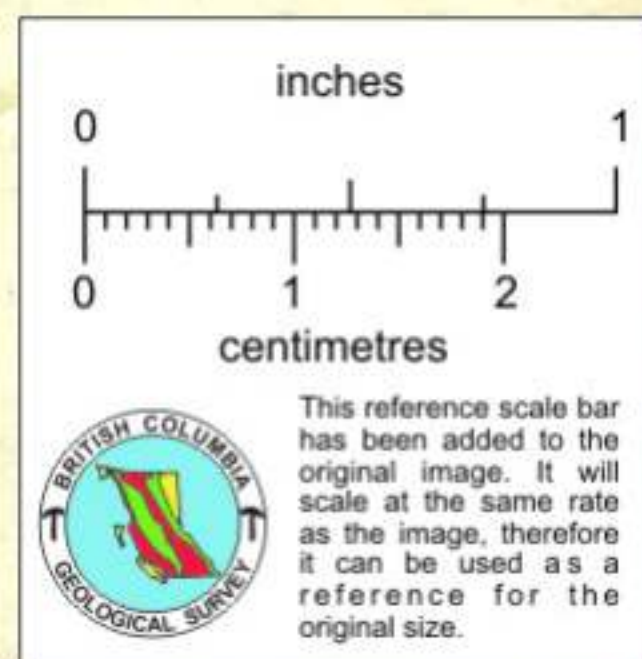
AA Claims

38109

38111

88

PIN GROUP
673083



2x4" = 60ft.
36"

Scale: 1" = 1200'

Tom Walker, - Commissioner

26
25
150
150
500 W

38112 - on south bank of brook at 6+50 s of
I.P. on C. 65-66. - Highly oxidized andite
no visible mineralization

38114 - H. Oxidized - silicified - schistose - volc.
heavy. py

38117 - Basic And. ? dark - Med. py. some
epidote in fractures

38120 - Altered And. ? - Epidote & gty inclusions
some gty in sample.

121 - And. ? - dark py. & in fractures
some gty incl.