

ONE RESOURCES CANADA CORP.

MINERAL - OIL - AND GAS PROPERTIES OF CANADA
 MANAGEMENT - DEVELOPMENT - JOINT VENTURE - STAKING
 CASH BUYERS OF PLACER GOLD & CONCENTRATES

PHONE - (604) 669-4002

MEZZANINE FLOOR 448 SEYMOUR STREET VANCOUVER B.C. V6B 3H4

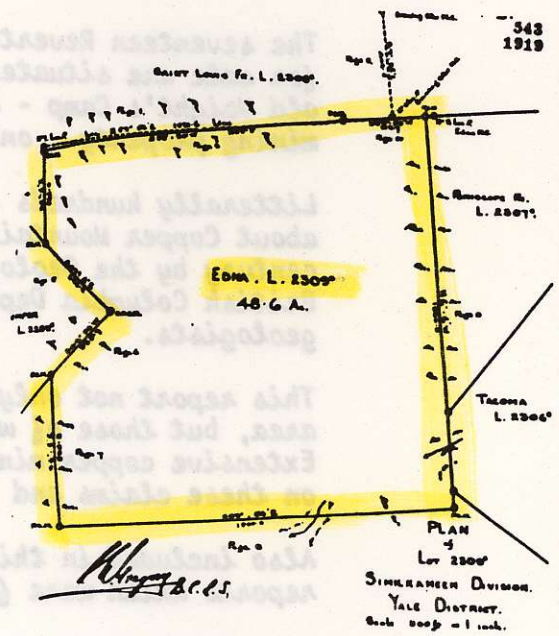
672890
 Edna

12

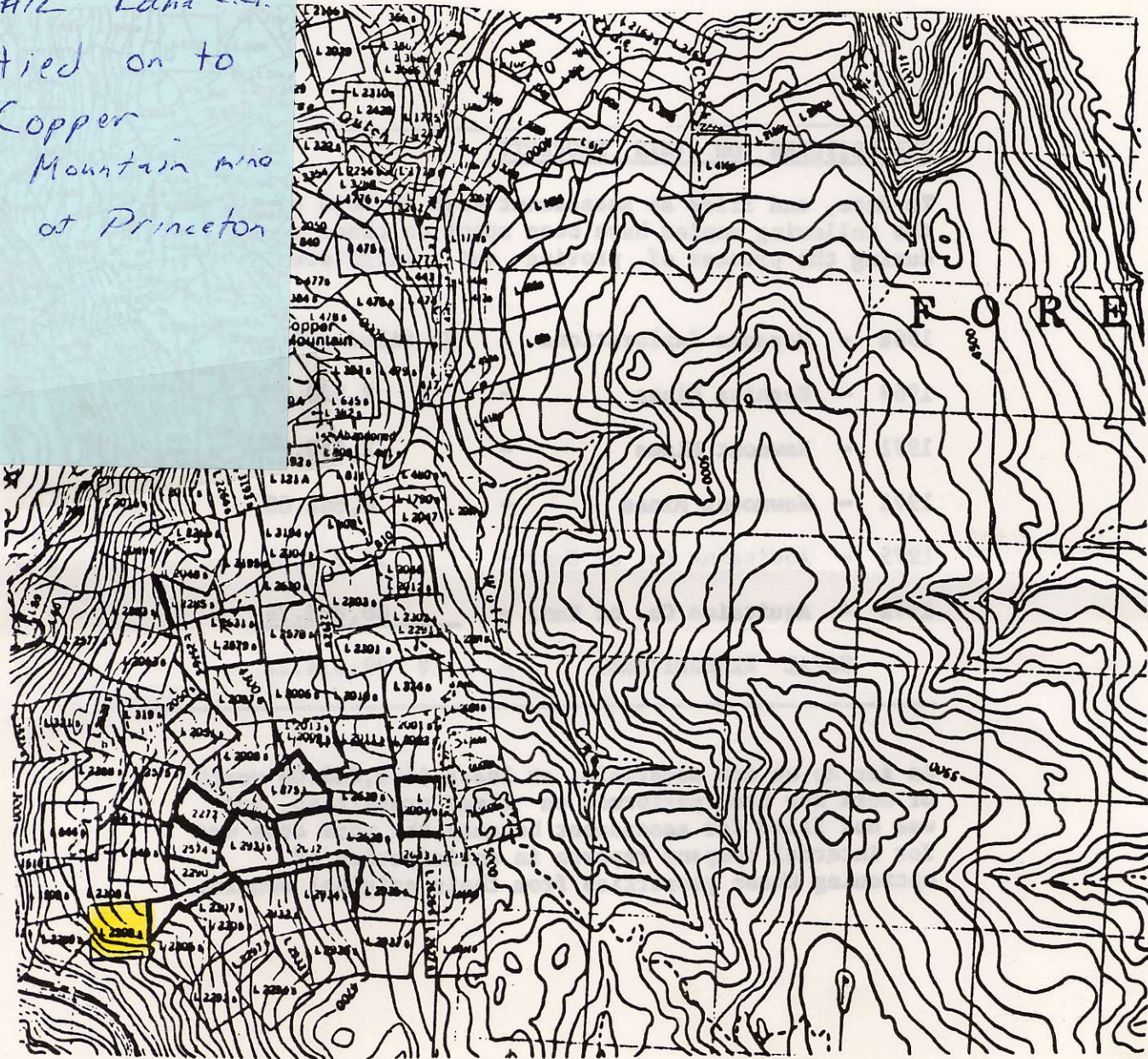
MINERAL PROPERTY

MINERAL PROPERTY DESCRIPTION

NAME: **EDNA**
 LOT # **2309s**
 MINING DISTRICT: **SIMILKAMEEN**
 LAND DISTRICT: **SIMILKAMEEN**
 AREA IN HECTARES: **19.67**
 AREA IN ACRES: **48.60**
 MINERALS PRESENT: **CU-AU**
 MAP # **92 H / 7**
 DUE DATE: **June 12, 1986**
 TYPE OF ACCESS: **ROAD**
 CLAIM STATUS: **SURVEYED (X) STAKED ()**
 HISTORY OF PROPERTY INCLUDED IN REPORT: **YES (X) NO ()**
 PAST ASSAY RESULTS: **see History**
 GOLD COMMISSIONER'S FILE - RECORD # **2400**
 DATE PROPERTY FIRST CROWN GRANTED OR STAKED: **September 1919**
 NEAREST TOWN: **Princeton** APPROX. DISTANCE: **12 miles**
 TOTAL PRICE OF PROPERTY:



#12 Edna CG.
 tied on to
 Copper
 Mountain and
 at Princeton





ONE RESOURCES CANADA CORP.



MINERAL - OIL - AND GAS PROPERTIES OF CANADA
MANAGEMENT - DEVELOPMENT - JOINT VENTURE - STAKING
CASH BUYERS OF PLACER GOLD & CONCENTRATES

PHONE - (604) 669-4002

MEZZANINE FLOOR 448 SEYMOUR STREET VANCOUVER B.C. V6B 3H4

THE COPPER MOUNTAIN CLAIM GROUP

The seventeen Reverted Crown Grants being offered for sale are situated on Copper Mountain - The old Voight's Camp - adjoining Neumounts operating mining property - only 12 miles from Princeton.

Literally hundreds of reports have been written about Copper Mountain since the turn of the century by the Geological Survey of Canada - The British Columbia Dept. of Mines and many prominent geologists.

This report not only includes a history of this area, but those of work done on these properties. Extensive copper mineralization has been proven on these claims and on adjoining properties.

Also included in this report are six assessment reports which were filed on these properties.

Since 1900 Copper Mountain has had an operating mine producing at a profit and many companies - Neumount - Noranda - Aquitaine and Kechika have done work in this area in excess of -
\$100,000.00

EXPENDITURES ON THIS PROPERTY

To date, and filed as assessment work on this claim group, the following monies have been spent on these properties during the process of proving out a large ore-body.

1968	- Noranda Explorations	-	No filed price
1969	- Kechika Mines	-	\$ 2,500.00
1971	- Newmont Mines	-	2,550.00
1971	- Newmont Mines	-	6,862.00
1975	- Aquitaine Co. of Can.	-	26,278.00
1975	- Aquitaine Co. of Can.	-	<u>60,823.74</u>
TOTAL EXPENDITURES		=	\$ 99,014.24

As far as we can ascertain, at least \$500,000.00 worth of work has been performed on these properties, but was not filed for assessment because the work done was for internal company reports in anticipation of optioning these properties from their original owners.