

SUMMARY

Malcolm Bell

SONGBIRD PROPERTY
 NANAIMO M D, BRITISH COLUMBIA

67-2862

The Songbird Property is comprised of 4 claims (48 units), and is situated >10 km south of Nanoose Bay. Good road access exists to all portions of the claims.

Surface Au/Ag mineralization has been revealed by four trenches over a strike of 100 meters, with widths ranging 8-12 meters. Surface sampling indicates an average grade 0.10-0.15 oz/TAu, and .8-1.0 oz/TAg.

The mineralization is associated with quartz veins and intense silification in a NNW trending structure dipping 60-65°W. The structure is very graphitic and carbonaceous, and therefore has been very positively traced over a length of 2000 meters by VLF-EM methods. A second subparallel structure exists 250-300 west of the main structure.

Soil sampling has confirmed the presence of gold/silver occurring sporadically over the entire surveyed strike length of both structures, therefore several untested targets exist on the property.

Eureka has recently completed a preliminary drilling programme in the area of the known showing and consisting of eight holes (457 meters). The initial four holes were drilled immediately beneath the surface showing, holes #5 & 6 to the north and #7 & 8 to the south. All holes encountered the structure, in hole #3 indicating a true width of 37 meters. Assayable contents of gold are summarized below:

			Au oz/T	Ag oz/T
Hole #1	18.0 - 19.0m		.024	.07
	19.0 - 19.75m		.008	.11
Hole #4	24.2 - 25.9m		.008	.08
Hole #6	24.4 - 33.5m		.001	.47 (sludge only)
	includes 30.4 - 33.5m		.001	1.10 " "
Hole #7	5.6 - 8.2m		.031	.24
	22.6 - 24.1m		.048	.28
	21.3 - 24.4m		.066	.25 (sludge only)
Hole #8	18.1 - 18.9m		.085	.55
	28.9 - 30.3m		.034	.25
	18.2 - 30.5m		.012	.10 (sludge only)
	includes 18.2 - 21.3m		.024	.15 " "

Although the widths are narrower, and grades lower than reported on surface, the better holes (#7 & 8) demonstrate continuation (with possible rake or plunge) to the south, and the mineralization is open in this direction.

There is a possibility that drilling has created washing of gold and/or silver values from core, as the sludge samples in general reflect a higher grade content than the core. The unusual content of silver only in the sludge of hole #6 is unexplained. Contamination being a suspect, the following was completed:

- reassaying pulps at another lab
- reassaying rejects
- contamination from drill additives
- contamination from sample handling

The unusuality still remains unresolved as all reassays have been verified and no contamination is suspected.

Eureka remains optimistic about the property for the following reasons:

- grades of economic significance are encountered on surface within a major structural system
- this mineralized zone appears to continue to the south, and is open
- other viable targets exist on the property expressed by geochemistry and geophysics.

Respectfully submitted by

EUREKA RESOURCES INC.

John R. Kerr, P. Eng.
Vice-President

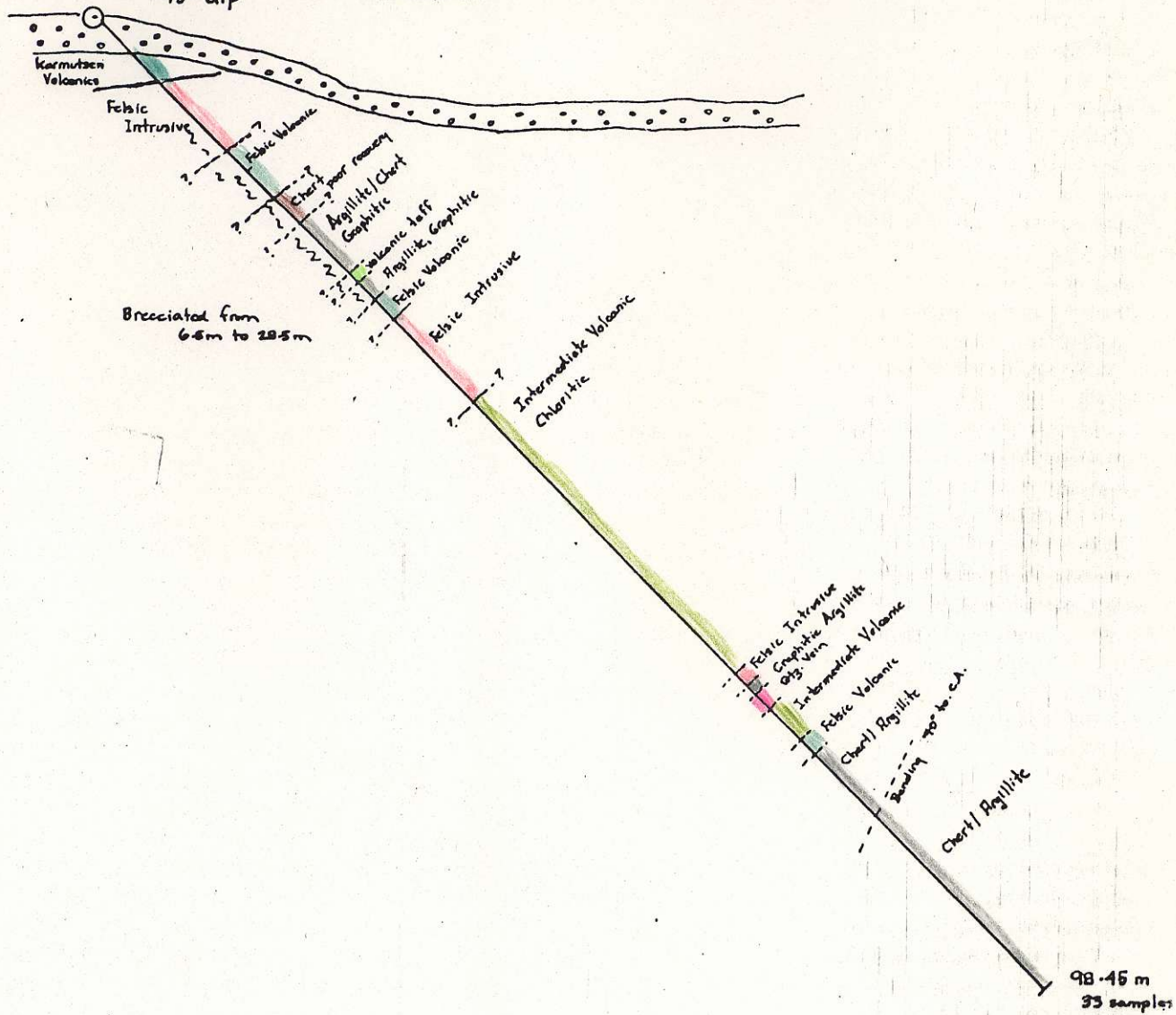
JRK/da

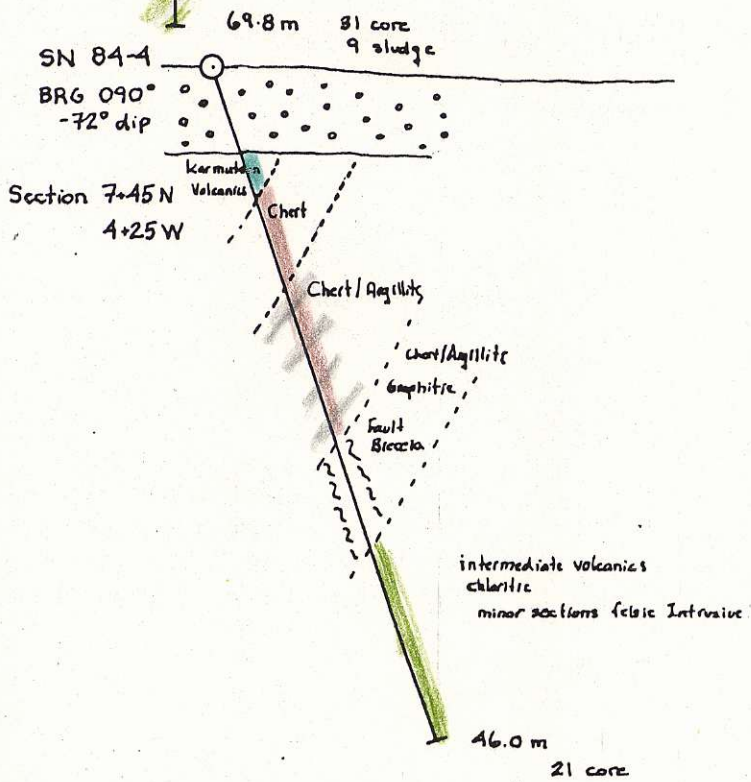
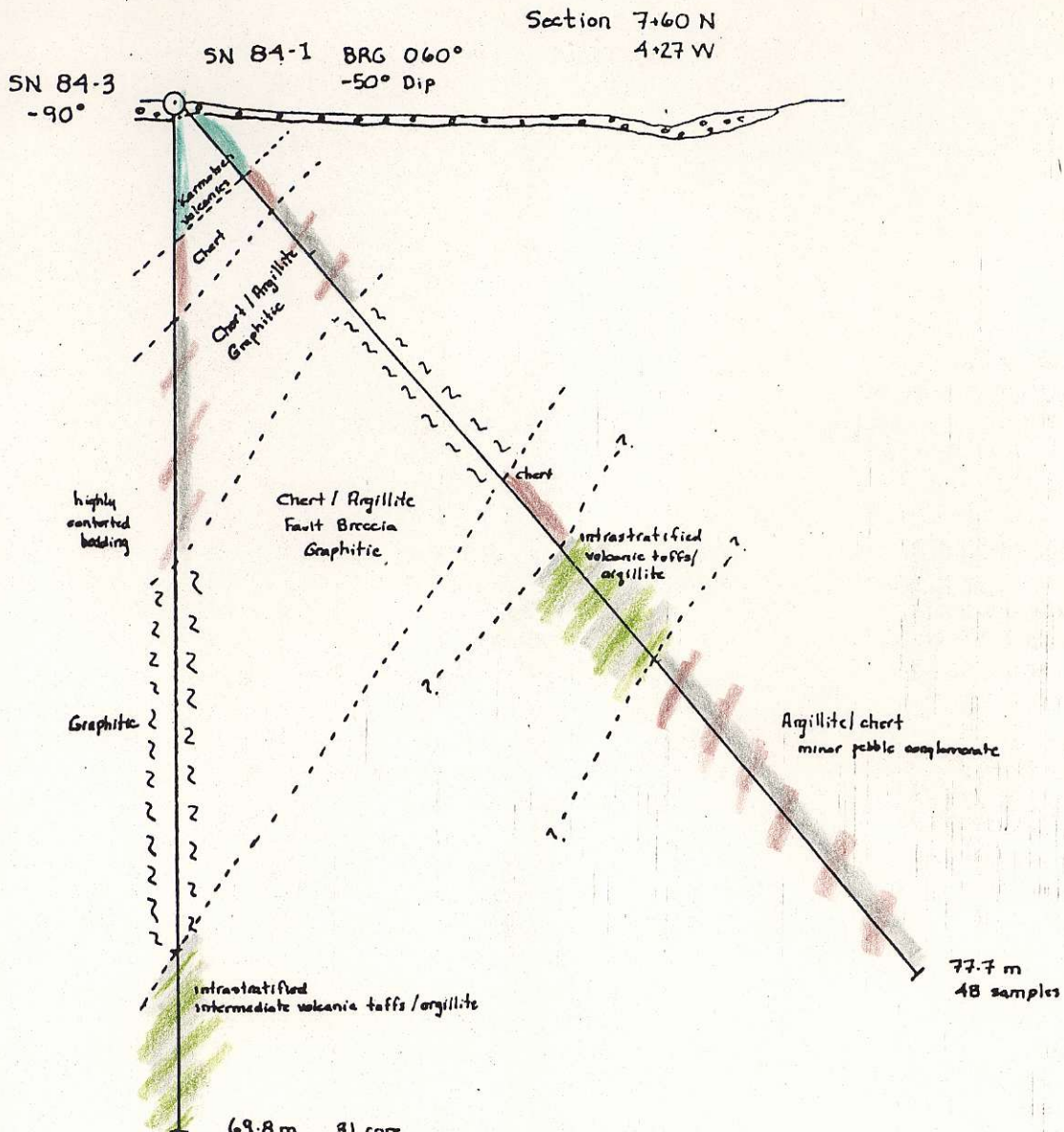
SN B4-2

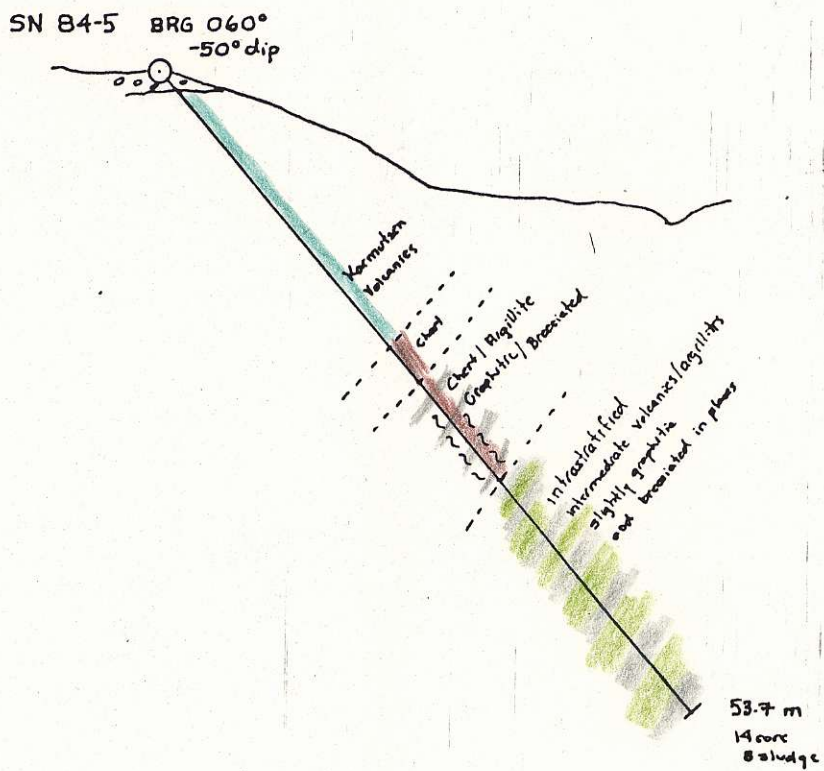
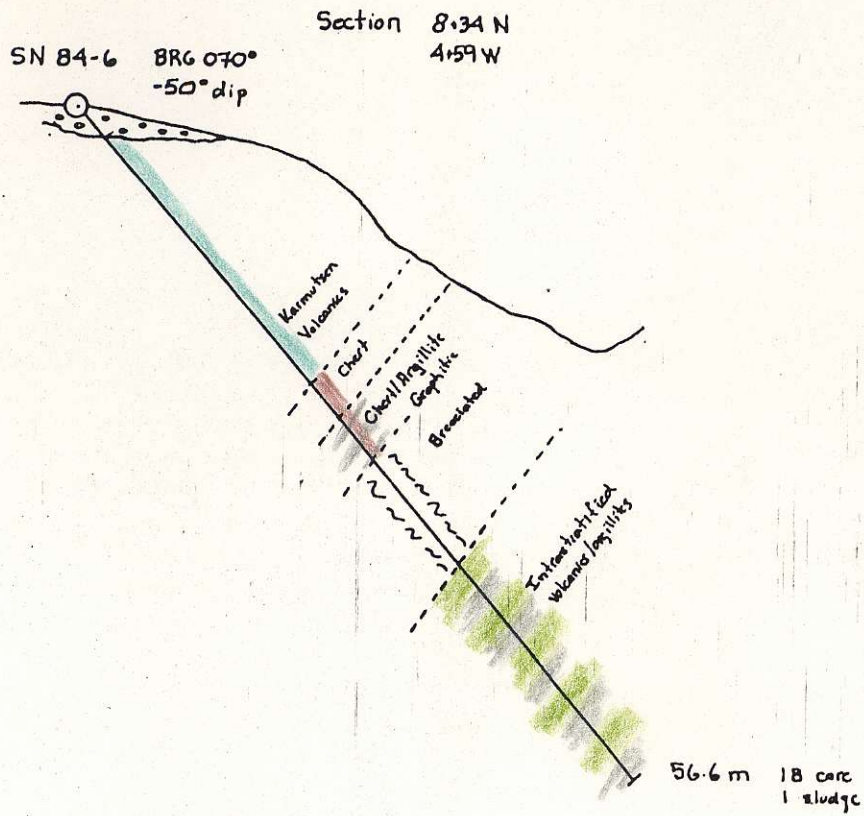
BRG 090°
-45° dip

Section 7+23 N
4+29 W

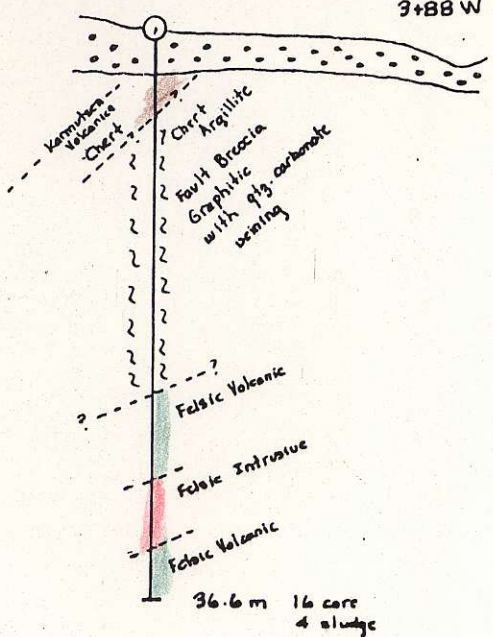
Looking North







SN 84-7 Section 6+78 N
3+88 W



SN 84-8 Section 6+41 N
3+80 W

