

672695

Heagy

Casau Syndicate

June

1983

→

June 20 - 26 - Camp mobilization and set up.

June 27/83 Traverse A10

104 P 12 W - north side of Mare Claims

Samples 83 CA Y 01, 02, 03

32787 C

Geology - thick sequence of assorted int volcanics (angite/abldi porphyries, lapilli tuffs, agglomerates, dykes?) adjacent to serpentized ultrabasic adjacent to Cassiar Batholith. Sedimentary rocks (argillites, cherts etc?) to east do not outcrop.

June 28/83 Traverse A11

104 P 12 W

a/ mislocated - initial traverse from Blue Claims SW

Sample 83 CAB 04, Y5

geology - black argillite, rusty near lower section overlying ~~sandy shale~~, grey lat dipping gently to SW, across valley to south into more recent basalt, then interbedded black argillite, grey phyllites, schistose optitic sandstones + siltstone, buff sandy dolomite

b/ southern-most stream draining east off MARE claims

Samples - BT-06, 32788 C

Chertitic basalts, basaltic tuffs, downward into interbedded chert-volc conglomerate - grey limestone then into grey-green laminated dacite. Minor azurite bloom in gully adj to chloritic diorite dyke.

June 29/83 Traverse A12 104 P12W
- middle creek of three draining east of MARE
claims

Samples 7, 8, 9
32789C, 90C, 91C

dominantly volc sequence exposed along
creek. minor chert & pyroxenite. Complex
shearing along creek and high angle
cross cutting Shears.

June 30/83 Traverse A13 104 P12W
northern-most of three creeks draining east of
MARE claims

Samples 10
32792C, 93C.

Volcanics & interbedded limestone on ridge
top, interbedded / interleaved, volcanics,
cherts, argillite & ^{volc} dykes along creek.
Near bottom section of creek, Recent
brown, grey to hematite red vesicular basalt
on ridge to north, showed hematitic
weathering limestone in creek.

July 1/83 no traverse
post bombing aborted due to helicopter
trouble.

July 2 1983 A 14 109 015 E, W.
- north of Plate ~~Creek~~ Lake.

Samples 4-11

32794C, 95C, 96C, 97C.

Geology - mapped as upper Sylvester Gp
in ^{fault} contact with Cassiar Batholith to east,
Plate Creek Stock to south. Rocks
are tan quartz-feldspar-mica (musc, chl, biot)
schists ± minor barren wt to grey qtz veins
except immediately adj to Cassiar Batholith.
Intrusive is blastomylonite minor tourmaline
(v. f.g bk) veinlets. Thin slice of blue-grey
limestone and black argillites were caught
in the steep / vertical western fault
boundary of the Batholith. One piece of
float of argillite with mariposite - in talus
local or glacial? Local arg has minor
grey qtz veins, ± pyrite, and diss py (→ sampled).
Schists appear to be mylonized, reg metamorphic
gabbro + arkosic sandstones not holes.

July 2 / 83 A 15 109 P 5

- west of Gallic Lake

Samples 83 CA 4 12, 13, 14, 16, 16.

Geology - lower Sylvester argillite, slate, chert
± dolomite nodules, distinctive red + green cherty
slate interval near base of Sylvester / Top of
McDane? McDane limestone, black, dolomite
frequent conglomeratic beds / Kunst?
Float of massive white baute.

July 9 1983 A 10 109 P 5E

west of Gallic Lake

Samples 83 CAY 17, 18, 19

83 CAB 11

83 CABT 11

32800

32798C, 99C

~~327800 C~~

73730 B, 31B

32B

Geology - dk to white serpentinite in lower volcanic interval of U. Sylvester overlying black arg chert, grey slate, minor lst, dolo of Lower Sylvester. Weak limonitic weathering near vertical shear in volc / ~~dolomite~~ / ~~chert~~ / ~~lst~~ / ~~dolo~~ / ~~serpentinite~~

carbonatized - ^(schalading) qtz - Fe-carbonate ± mariposite veining and alteration. ~ 2 m wide extends ~ 15 m + vertically up cliff but appears to be truncated at top, runs into talus (+ sed contact) at base.

Lower Sylvester ~~partly~~ section exposure limited but almost continuous. no exhalative-type beds. Red + green cherty slate at base of formation cut by barite-dolomite vein ~ 15 cm wide, McDane lst as A15 barite appears to be massive irregular veins to ~ 25 cm thick ~~but it is~~

generally not exposed in outcrop, barite limited to very upper section of McDane lst above laminated black dolo, dolo by laminated grey lst + lst arenite. Bx + conglomerate appears to be depositional not Karst.

Note: topofil string near barite veins in
red-green slate OK no flaggers old
cains on list done - old claims? no
notes in cains. No indication of sulfide
mineralization associated with the barite but
further prospecting of Sylvester-McDane
contact in area warranted. Also
further work on volcanic - ultramafic rocks
to check for further carbonate altered zones,
(including west side of ridge), area is
not far to NW of Brisco asbestos claims.

July 5/83

- weather day - low ceiling

July 6/83 ~~A17~~ A 17 104 P 4
not plotted

Eagle Mountain
Samples 83 CA BT-13, Y 21
73733, 34, 35, 38 B

Andesitic volcanic tuffs, breccia/agglomerate ± flows.
with minor interbeds of grey lst (also small nodules (6x) to few metres)
chert, chert ss, chert conglomerate, slate.

Vols are relatively homogeneous areally.

Rusty gossans on peak caused by despo in vols
+ in v small skanky pods. Also zone of argillic
alt'n in chert pebble conglomerate + separate
zone of py ± ser ± clay alt'n ± silicification
in volc tuffs (50x50m area). North end above
Dease River main zone of hematite weathering Fe carb
alt'n in vols than lower down several
narrow beds of white xtal lst.

July 7/83 A 18 104 P 3+4

Eagle mtn area ✓

83 CA Y 22, 27 BT 14
~~73730, 32 B~~ 73736, 37, 39 B

vols ± sed interbeds as above

several zones of Fe carb alt'n on top of
plateau ± qtz veins, silicification, also py, traces of muscovite

July 8/83 A 19 104 P 3+4

Eagle mtn area (Eagl claim).

83 CA Y 28-31, B 14, BT 15, 16;
73740 → 47 B

July 8/83 cont'd.

vols used as above. Fe carb alt'n zones fairly common include zones with traces of cpy, sphalerite, galena in qtz veining. Zone usually few m wide trend \approx E-W strike length exposed 5 to 15m but lost in talus, or covered. Most interesting area of 3 examined ∇ strike 20 units, fly camp, further prospecting, if goethite ~~runs~~ runs at all then claims should be expanded all directions.

July 9/83 A20 109 0 16 E
SE of Midway area.

83 CA Y 32 33, 34

- large area of red gr. fresh looking chlorite one small area of white to bk chert \pm rextalized.

July 10/83 Staked EAGL 1 Claim block.
AE SS

July 11/83 Sylvester PK. A 21
104 P 3

83 CA Y 35, 36, BT 17, 18. 7371, 72, 7374, 75

course anomalous volc bx, green fragments

Volcanics ^{Bar of bk} ^{separated} fault zone w Fe carb alt'n just NW of PK. below also interbedded lithic ss, chert, argillite, loc locally w ^{num} py nodules, stringers. ^{bleached to gossan} mostly of fault gouge in CK.

July 12/83 A 22 104 P 3
North of Dalton Claim

83 CA Y 37, BT 19
73780, '81 B

small stock of rusty weathering m.g leucocratic felsic intrusive rx with abundant chert py. in Dalton Creek. - several sampling flags. Ridge top entirely m to c.g. biotite ± k fide quartz monzonite (Cassiar mt) contact appears to be in creek drain NW in Dalton CK from Dalton Claim area.

July 13/83 104 P 12, 13 0 9, 16 A 23
SE of Toogaya CK. ^{not possible} 73782B

Ridge top volc (andesites) bx, tuffs.
side chert, ~~slaty~~, phyllites.

1 chert beds. laced with wt qtz veins to 1m thick dips to 50% of o.c. exposed on both banks of creek. one area of lenticular weathering stained chert w qtz otherwise dead.

July 18/83 A 29 104 P 3
Sheep Mtn.

ridge back volc tuff, bx ss, east side
interbedded volc, chert, chert ss ± cut by
diorite. one small area of bleached "leached"
chert, rare py., MnO₂ clay.

July 15/83 109 P 3 A 25 Sylvester PK area
83 CA Y 42, 43
73748

andresitic volcs ~~near~~ chert, lot + argillite.
- dead.!

July 16/83 109 O 16 E A 26
N of L. Ranceria River.

83 CA B 15 BT 21, 22
73749, 50, 73777, 78, 79

Andresitic volcanics (fragmental) ~~near~~
black chert interbeds. 10m wide
zone of Fe carb altm can be traced
across mountain (+1 Km).

July 17/83 A 27 109 P 5
Crique W of Gallic LK.
83 CA BT 29, Y 44
73788-93

andresitic volcs interbedded w bk chert, ct cong.
± sheared. , Lg sill of u-m to east.
Small areas of silicified chert, sheared
chert w malachite, bk 2° cu mineral, hematite,
siderite in volcs also small area of
Fe carb-qtz-muscovite altm in u-m.
traces py + needle shaped brogy sulfide.

CASAU

Heagy 83A10 109 P/12

to north of Main claims

Stylvester Group

June 27/83

83 A10 - O/K1 blocky, neutral brown-gray-green weathered
 med green f.g. ^{artificial} ~~basalt~~ with abundant dk green
 after ~~the~~ ^{hblde} ~~the~~ ^{chlorite-epidote} ~~the~~ ^{veining}
 generally fine fragmental appearance
 (1 to several mm), traces of fine pyrite,
 rock non-magnetic

Local formation in gran size, abundance of
 phenocrysts but generally fairly uniform in
 composition. As head to west along ridge
 get 2nd Knoll with subangular agglomerate
 frags to 15 cm + dia. Slightly coarser grain size
 otherwise hard to see on fresh surface.
 further to west lose ^{hblde} ~~fragments~~ phenocrysts get
 feldspars slightly coarser than groundmass, some
 smooth w/ f.g. andes. & - dykes?
 no indication of "bedding" anywhere.

form west yet (before flat open to north)
 uniform f.g. andes. small pods / nodules of
 vbl lat + vbl grey next chert (weakly banded) locally
 with epidote, ~~trace mag~~, po (weakly mag) - not
 clear whether blocks or discontinuous beds
 but traceable over only 1-2 m max. with
 andesite get small dk rusty weathering patch
 for 1-2 m with traces of pyrite - related to dykes?

- still sampled creek channels north

all of m-g andesite ^{to diorite} as above, float includes
 banded light (to dark) grey chert + traces of s-s
 + epidote appears to closely associated w/ volcs

83 - A10 - OK 3 - small rusty patch in mg
andesite(?) - py-ser-chl altera to fractures.

83 - between 2 more drain creeks much more
light gray to greenish cherty - calc. silicate rx ± some
lst, hblde porphyry, fine diopside, fath
west yet brown hblsd

Back of valley u-m the intrusion
u-m - m to c g brown-orange weathering, high bright pyrite /
min apple green serpentine, wt talc, ± magnetite, py
on S side of N ridge shde of dk rust weather 6K
argillite ± py is caught up (?) in highly
contorted ss-m

Intrusive is equigranular white ^{m to c g} feldspar g to monzonite

top of ridge u-m to west of saddle ± arg, intrusion color
N 50m to west of saddle, u-m appears to
continue to next ridge to north W

heading east along north ridge of saddle
hblsd mafic/and volc lens dk green ± serpentine
dk ± ^{weak} rusty weathering v. blocky just before + after
peak get 13m wide dykes of mg ^{dk} monzonite, ?
appear ~~to~~ to ridge or appear north trending

holes lapilli vs aggregate on S ridge more
mafic? N. more cherty & cherty lot spots

last ~ 200 m before southward but on ridge end of or
f.g dk green gray basalt ± calcite amygdalites & some
features - except for V cutting dyke?
of hblde - Feldspar porphyritic andesite
(chl-epidote)

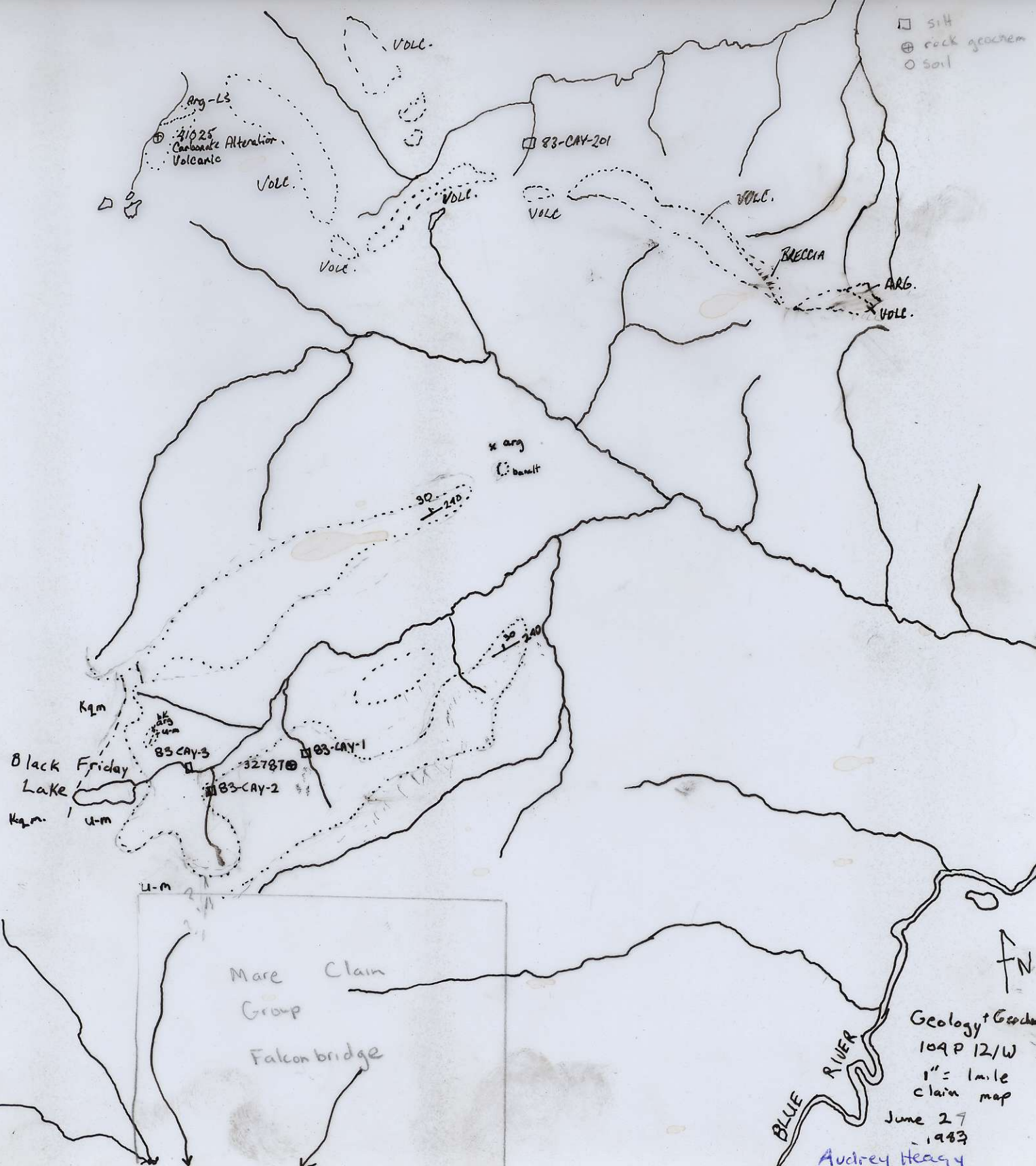
from base to top saddle quartz (chloritic)
andesitic agglomerate angular fine &
wt/gly chert + rare bk amygdalite?

saddle (fault?) to end of ridge f.g basalt,
andesite as above just before end get
interbedded (~5cm) chloritic chert + (some) ^{vols.} seeds
bedding 240° / 30° N

bottom of ridge dr-br ^{gravelly} fine weathering basalt,
thin dk gray shaly amygdalite

- SH
- ⊕ rock geochem
- Soil

M 109 P 12 W



W

Heagy CASAU A11 June 28/83
109 P1/2 W Claim map plot

base of ridge local float of slaty to roddy bk argillite
small rusty mossy scaps uphill
83 CAB-09 limonite oozes taken from 1 ft deep
in mosses (Sphagnum)
- orange sandy flags in area

Blue (Oxide) ~~east~~ face - slaty to roddy
bk argillite d. mic light pale yellow, g/c - ser
"fg. fuff" interbeds & one carbonaceous rock chip seen
steeply dipping (N) cleavage

small area of dk grey v. g. lat
keeps up sub-veg boundaries var br-red-purple
fresh
CAY-05

grey ~~argillite~~ ^{phyllite} 160/50° SW
a bedded, following

bk argillite 390/65°

massive buff dolomite, sandy dolos m
bl-gy lat small w. arg. w. dol-dol
altin

slaty ^{robbly} g/tziteless plitstony, ± biot. ser → schists
lg wt barren g/c var. abundant

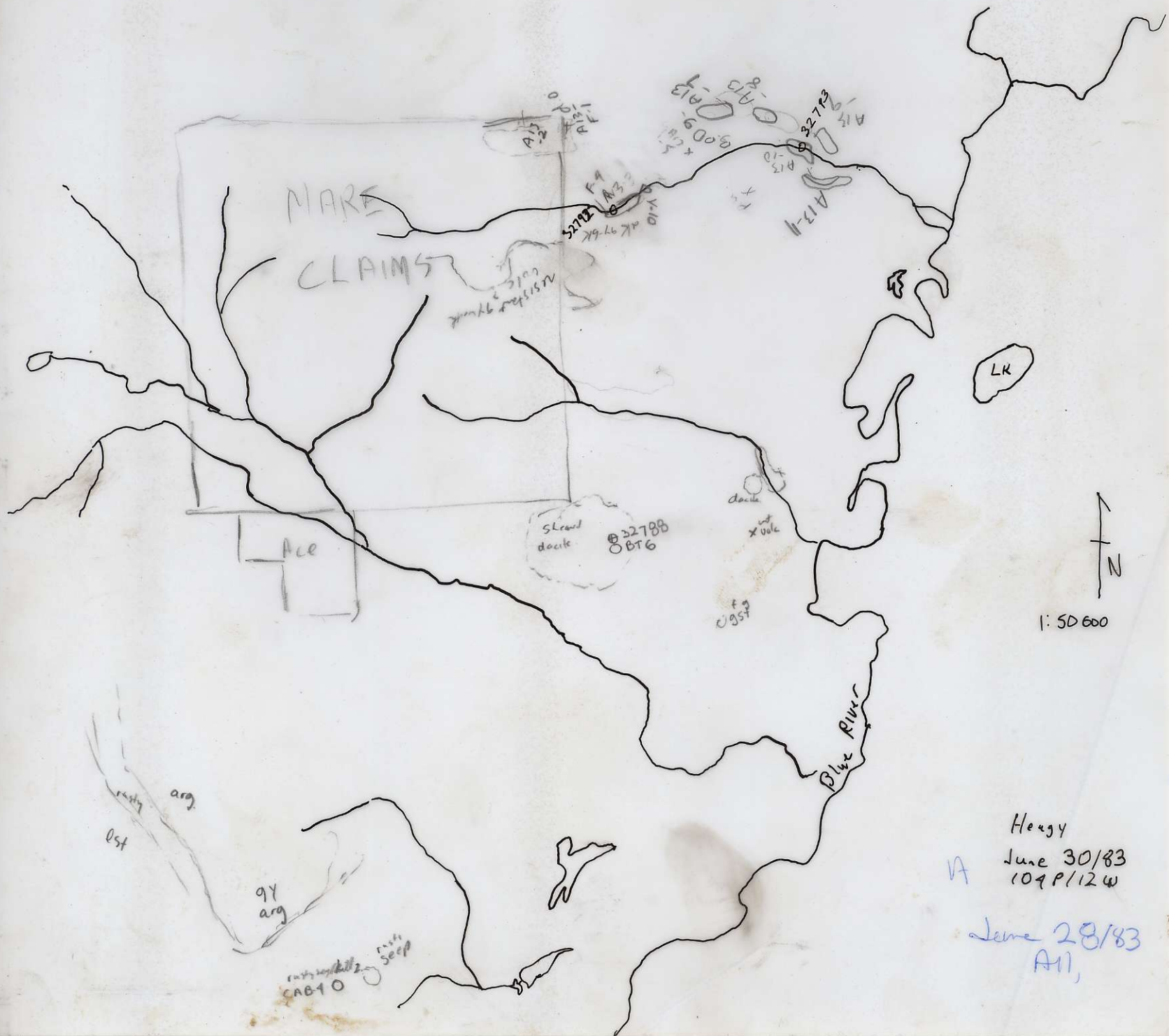
A 11

b

A11-01 from weathering of dk green-gray basalt chert. all alt. locally v. strong, chert - esp. - all alt. assoc w penetrative staining. Lower in center on ridge - frequent small sandy thin/gy det frags in green surface of r near base of gss chert 'pebble' cement, ~ 1m of chert above lt grey ls. all weak cherty banding 145°/80° NE 140/70° SW

A11-02 gray-green dacite ± finely banded structure. ± fine network of chl inclusions.

11-3 rusty gully. chl dark. cuts through dark massive malachite, azurite bloom on rusty dacite, also talus 3 NY samples



Henry

June 30/83
109 P/12 W

A

June 28/83
All,



Casari Synd Heavy A12 June 29/83
east side of MARE claim

A12-1 or brown weathering chl-epidote fg green
chl-epid ^{all} ^{sepp} weathers to fobs, textures to fragmental
- shears, very irregular blocky weathering

A12-2 orange^{ish} weathering green-gray amphibole fuff, feldspars
+ dk grn chl after argite? tabs latter generally shears, often
form small blocky talus

A12-3 resistant gray grn amphibole of g fuff (Wimmer
chl, epid on fobs + shears ^{weath} ^{aren} ^{aren}
by strength before shaly to blocky borders, etc
br weathering chl-epid - albite fg greenstone
shaly parting ~ subparallel to contact with
dip gently to NW

43CA Y-7 fg green, salt mud of sand drift on bank
fob, chl, grt, some dark blue volc, etc, not soalt
+ g to mag, u-m

Y-8 fg green + salt large glacial deposit on shore

A12-4 with a thin ^{red} cascading water, green
of g contact?

125 dk grn fg chl grt w sepp fobs

A12-6 blocks of vdk grn separated pyroxene
in a sheared (foliated) g g mostly mafic, etc
+ g set grn sepp pyroxene

A 12-7 small ~~ok~~ of finely laminated. Ugy / dk grey
~~fine grained~~ black chert

A12-8 small canyon w waterfalls black chert wall
bottom steep dipping shaled chert (argillite) + dyke
of green gray ~~shale~~ ^{chlorite} Swall appears to have
u-m above shaled + rusty chert (unaccessible
just above and dyke N side chert w
~~and~~ ^{crystal} dyke w py, po 32789C sample
~~side~~

Small block of greenish A gneiss w
chlorite also above chert
area of w/f highly complex faulting
dykes/sills + staining

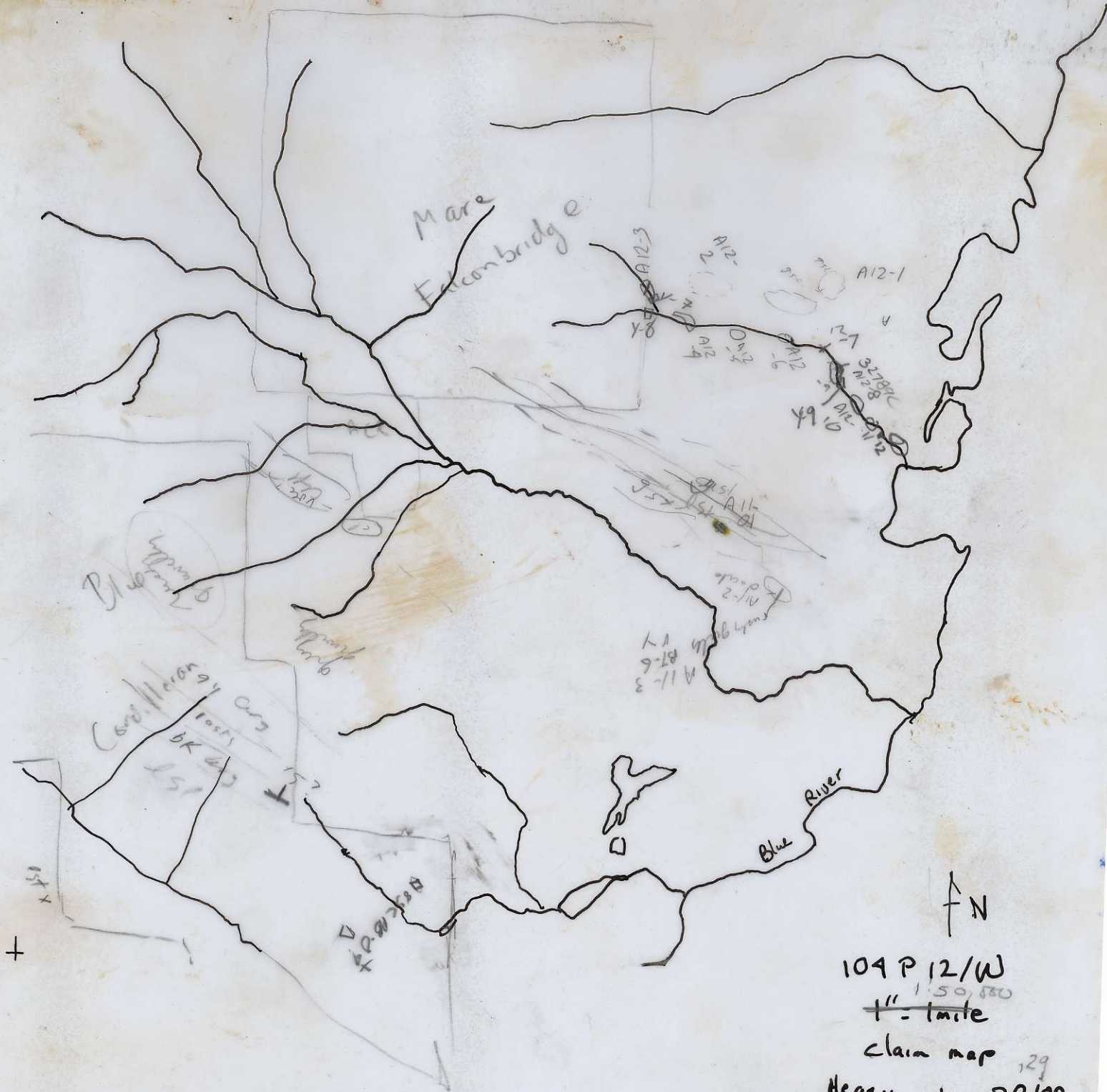
X-08 - silt from bottom of w/f
A12-9 andesite w po from south side

12-10 lower waterfall shaled andesite.
u-m (?) ledge at top of fall

12-11 ok's below w/E along creek bk - gy chert, rusty
(32790 rusty shale w po in finely fractured chert
shaled, & andesite

12-12 rusty weathering area of odd green coloured (chert)
d16 w py 32791

-13 deep canyon and + cherts weakly rusty weather
not as shaled as higher up stream / OK's



104 P 12/W

1" = 1.50, 580
mils

claim map 129

Heagy June 28/83

NW of Blue River

Heagy

CASAU

June 30/83

A 13

north creek runway east of MARE

A13-F1 - local float of grey green and agglomerate, and ^{dark grey} amphibole phenocrysts vesicular basalt w lot amygdale

A13-02 small rocks + talus assorted volc largely grey-green and white f.g tuffs, lapilli tuffs w lot, bk chert fragments (amygdale), agglomerate, rarely ^{highly} rounded andite, few feldspar porphyritic andite cobbles in f.g tuffaceous matrix of similar composition, angular andite fragments in more felsic matrix - very similar to breccia found by Tom + Mary to north
near piece of talus - f.g tuff or dyke? more andite after few f.g's w fine veins of Qtz-cpx?
near bottom of talus area interbedded dk water greenstone + thin interbed of grey ls, cut off by cross stream bed generally getting north dipping

A13-3 dk grey - black ^{to green} weakly foliated. siliceous tuff? ~~highly siliceous tuff~~

^{weakly dk grey} ~~serpentine~~ with disseminated pyrite and fine veins ^{usually cherty appearance!} w dk (chl?) matrix ± py @ 32792 N bank ~ 50m below main

F-4 one piece of ~~rock~~ leucite + Mn Spinel

ser-py^{chl} altered fine Qtz greenish Qtz-ser tuff?

very similar to rock sample 32787 to north

most of main is and-gst ± Serp-chl veining
near u-n

Sequence going down creek (Down section, dipping NW)
tuff w py, bk argillite tuff ls (~3m) argillite, tuff
interfused w bk argillite
facies / intercalary? few bk arg ± rusty particles (Fe-py)

Y-10 below last on a stream.

2m, 20cm fast, silt, assort, silt & gravel,
argillite, andalusite, ls, u-n,

A13-5 sand on dk weathering f.g tuffaceous gst.

A13-6 not weathering gray to blue gray dacite
& fine qtz oolitic network

A13-7 recent cindery vesicular basalt, scoria
dk brown to bk the (to east) narrow yellow-brown stain
are hematitic, minor blocky gray v. finely vesicular
basalt + olivine

-8 vesicular basalt

-9 dirty gray - ls ls

-10 ls w rusty stains 32793
w/ argillite veins

-11 ls, bk arg near base + toward west
top chl - alb greenstone, qtz bx

Casau

July 2/83 Hoagy

A19

109015E

F-1 frost leaved tan qtz-feldspar + chl ^{low} schists (pink 55)
fairly common barren white + grey qtz vein
float to 20cm + ± minor dk gr chl

0-2 blasty lentic to gneissic leucocratic white
qtz megacrysts, off locally with shaly black
"varnish" or joints - hard, w/ 15% break - touch (79)
west contact ~ vertical

then narrow (1-3-5m) vertical? band of
fairly laminated grey to black ls,
thin black + dk rusty graphitic phyllite traces of pyrite

One piece of talus float

narrow dyke lens of foliated qtz m
in arg also in west br wealth

by diabase dyke (pink)

One piece of talus float crumpled arg - quartzitic arg

32794

with small patch of green mariposite

+ traces of py

32795

on

10 cm wide concordant grey qtz vein
phyllite / argillite, traces of fine pyrite

~~32796?~~

graphitic phyllite overlain w py ss

32796?

four-qtz veins in blasty lenticular gneiss
rare py + opx? (yellow stain)

A19-0-3

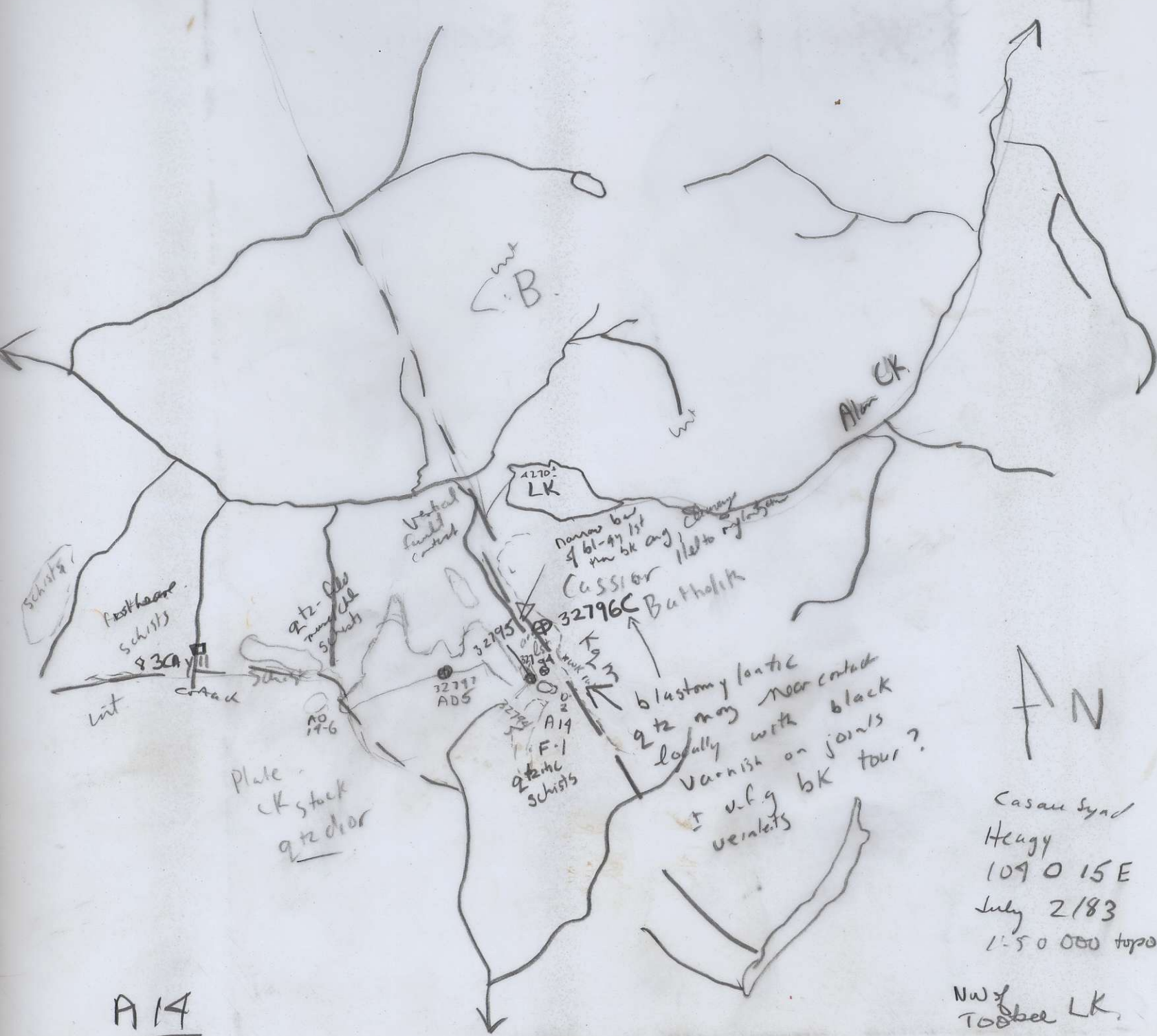
interbedded 015/200W gneiss
fairly bedded isot. silty shale
undraped to qtz-ser/chl schists
min wt tgy qtz veins + pods + trace of py rare galena

Y-10 below O/C's
3m 20cm fast, self assorted, silt + gravel,
argillite, feldspar, lat

A 14-5 32798 summer weather
gray green qtz - ser schist - metaroll ??
qtz vein run py, gal? sample &
ven + wall rock.

35 Jd
-6 rubble of meta g biotite (ch) - white
qtz clivite, run
fig felsic dyke

Y-11 1m 10cm mod, salt, sand + silt,
brown, chamois, pink & black on center
with qtz-feld-mica schists + qtz veins



AN

Casau Synd
 Heagy
 109 0 15 E
 July 2/83
 1:50 000 topo

NW of
 Toobel LK

A14

Casaq Neagy A15 July 3/83
104 P5 west of Gallego Lake

A15-1 subcrop^{+ve} of black slate, minor bt weathering dk gy dls pods
bedding 020/25° NW occasionally small cherty gy nodules
Cleavage 080/20° S with v. thin fine pyrit

Y-12 .5m 15cm med-fast, dk gy silt, sand, f. gravel
float, L slate, v. calc, d. calc, u-m

A15-02 - black chert with abundant in weathering
gray dolomite det nodules to east above creek but det
fragments to west on top of hill get bt argillite

-03 arg, bk chert + dolomite nodules 170°/70° W

-4 dk arg chert thin wt weathering gray chert above thin tab
gray siltstone, rare basaltic v. calc siltstone?

-5 interbedded red (karstic) + green shaly slate

Y-13 1m x 10 fast gray silt & g. arg, ch, glaucon
Y-14 3 x 1m x 5 fast - arg, ch, silt, glaucon

Y-15 blocks dk gy chert seen in creek
1m^{15cm} fast, dk gy silt → sand arg, ch, v. calc, u-m

Y-16 1m fast 20cm, s-dga. med fl.

3279
3370
3408
3279
3279



1:50000 FN
109 P/5
Heagy¹
July 3/83 A15
West of Gallic LK.

CASAU July 9/83 A 16 Heagy
 west of Gallic Lake

A16-1 black, dk green to white serpentinite
 largely dk green dk weathering
 32798 grab sample of wt, dk green serpentinite

V17- 2m 10cm fault, unsorted assorted colors,
 float 2m (Serp, Pyrox) volcs

show of dk bk-gr serpentinite + wt mg-silicate *spandolite?*
 with int volca + volcanic bit. mic conglomerate
 all + shored also cut by high angle steep
 dipping faults
 7 N.B fragments of serpentinite within conglomerate
 from any to serpentinite matrix?

- 32799 C ataxial vein
- 32800 C quartz serpentinite
- 73730 B u-m w Sulph
- 31 B talc Fe u-m
- 32 B Carb. 73730



Main Carbonate alt'n zone steeply
 dipping ~ 2m wide near junction of hill
 but truncated by fault runs into talus
 at contact of volc 15' ch

Sols below soles

apparently conformable

bK slate, arg + chert to saddle then
gray chert, bK chert w ^{degs} dots more than gray chert,
gray slates common all interbedded
bedding 170 to 170/ generally on 40° W
section fairly continuous along ridge back
only near covered intervals

rare fine pyrite or fructus in small patches

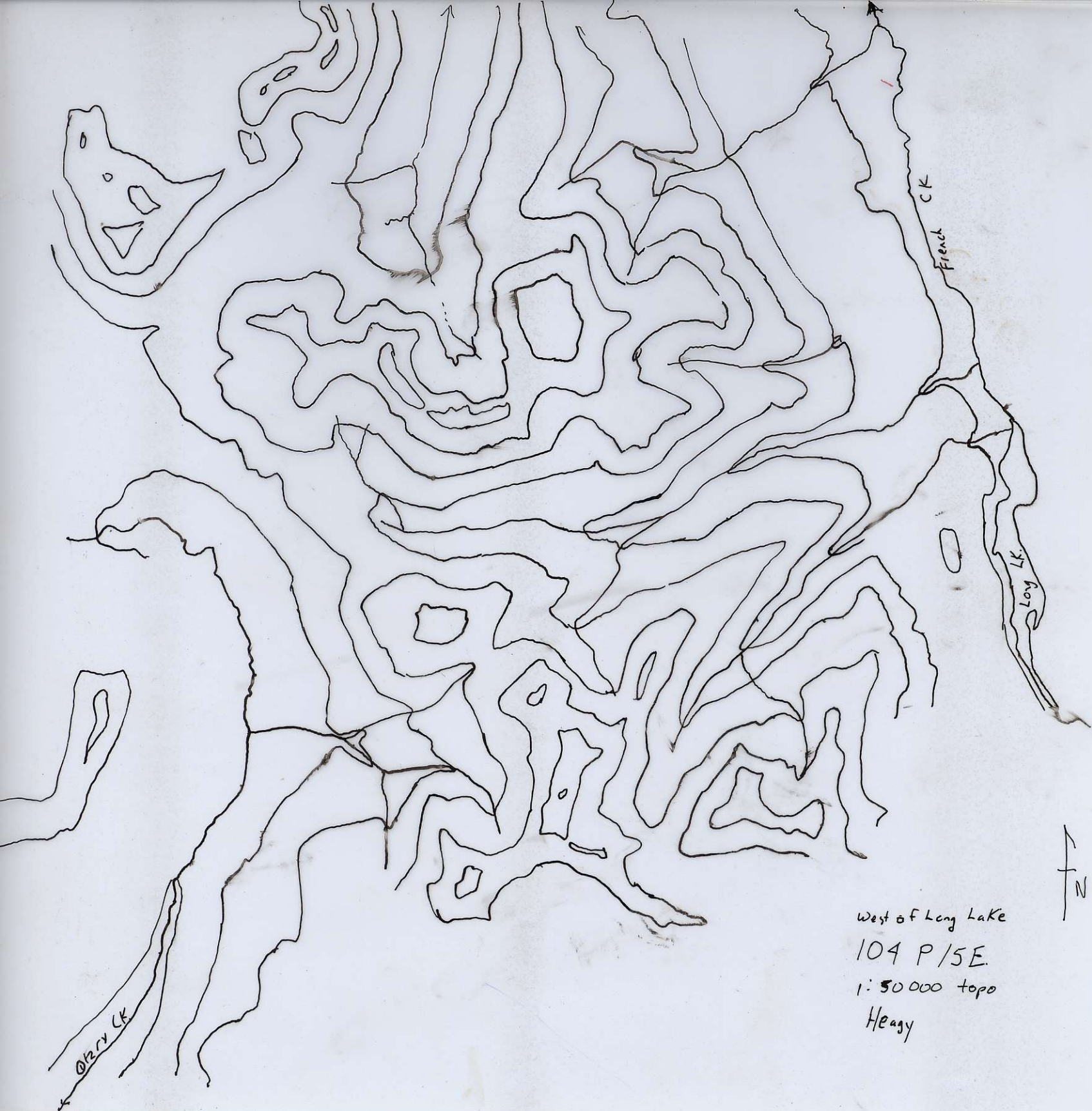
A15-4 red + gray-green cherty slates
- topolene but no flagging
narrow (< 10cm) a vertical vein of banded-chert?

Y-18 1m 20cm red gray well-sorted
flt - u-m, arg, slate chert etc

Y-19 small, dry creek bed water
vegetated paper silt, sand, gravel
~ 30m above main ck.

A15-5 - ~~let~~ the
banded narrow w/ banded & calcite
near vertical irregular vein??
not limonitic weathering, let = hematite nodules
in immediate area
soil B3CAB11. limonite f. 1.

A1.5-6. 2nd order fully laminar
I cross bedded grey + ventral set
140/35° W



West of Long Lake

104 P/5E

1:50 000 topo

Heagy

Heagy

Casau

July 6 1983

A17

73733

A 17-1
in sec box

top of Eagle mtn

silty

silicified zone

dyke w diss fine grey pyrite dyke
~ 15m wide cuts bleached light green-gray volcanic
min py lit (± deep epidote + py skn) - hole entrance

of kind chert granule congl ss - rusty dykes
to west of NW corner. chert ss, ventral chert (hole?) ^{grey} _{slate}

two white milky qtz veins chert ~ 50 cm? in talus
blocks, minor patches of or weathering Fe-dolomite - qtz rx

along streaks of qtz vein? talus sample BT12

previous sample flag T79-F-T L(?)

- old claims cover the zone, also rusty
dyke(?) area on steepest slope top.

BT-13

loamier soil + talus developed below

rusty grey qtz granule gray silicified hole(?)

H-2

with diss po / py skano fm
73738B $\frac{7}{7}$ po also in volcanic est pods?

X

Rx dom hill, volcs, slate, hole entrance, chert gran
congl, ss

73734 - argillitic altn w/ k hemat weather on
chert granule conglomerate

73735 - py-ss + arg + silicified volcanic tuff / bx
shallow faults extreme pyrite - steep <sup>(seen elsewhere
not all the)</sup>
shallow parting

rocks above it on slope are volcanic
breccias & chert-epi altn parting, grey slate, ss
chert ss, chert granule conglomerate
area of rock w/ ~ 50m x 50m

north end of ridge fairly homogeneous
green volcanics f.g. but f.g. volc. b.x. long.
minor small discontinuous areas of red weather
Fe-carb-hematite ± quartz in sandy rock

5332-

5334-

45

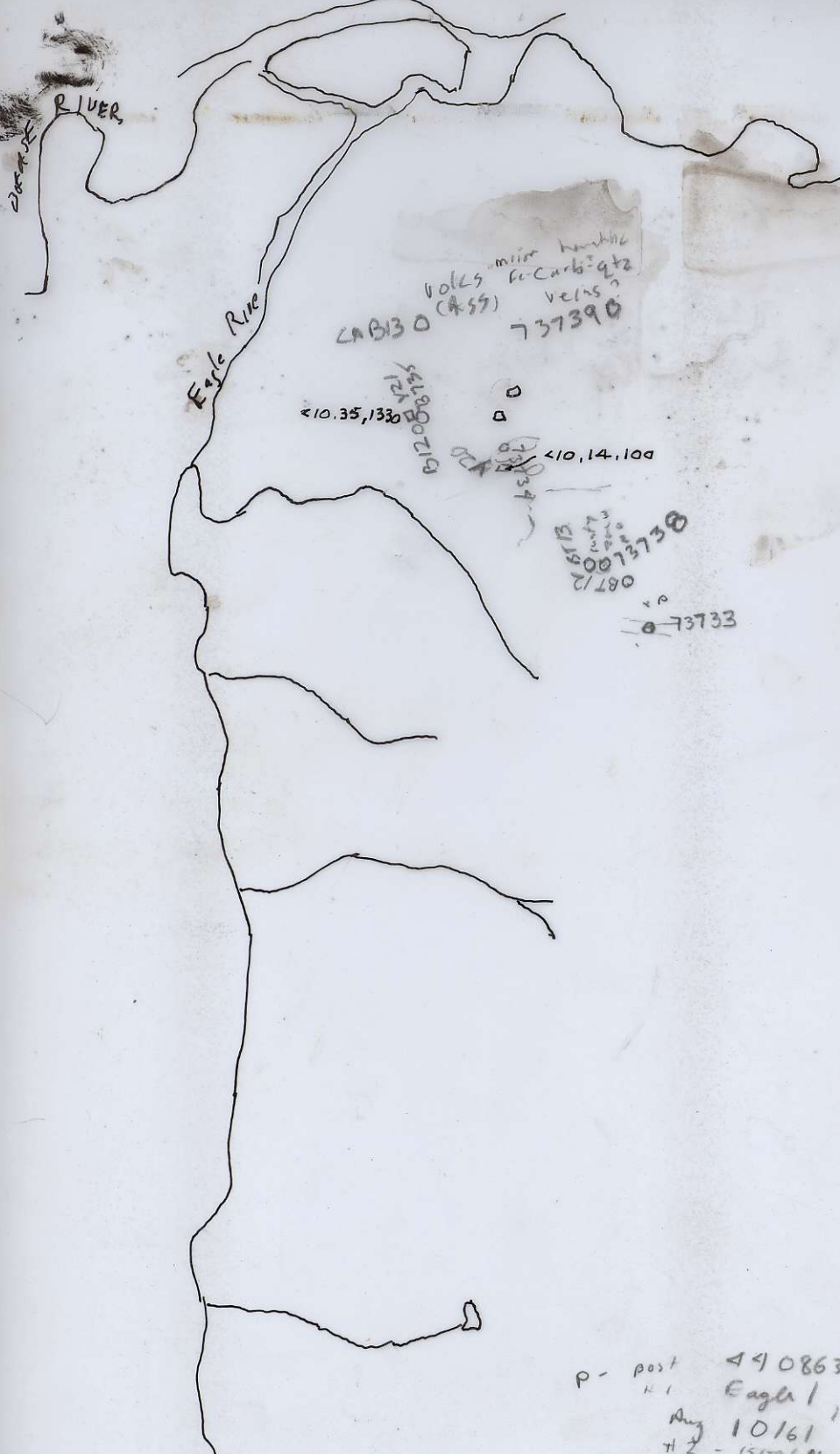
PL-13

PL-13

PL-13

PL-13

PL-13



↑ N
 Casan
 July 6/83
 Heagy
 104 P4
 Eagle Mtn.
 Au. As Zn

P - post 490863
 H1 Eagle 1, E Ward
 Aug 10/61
 #2 - 1500' N, 1500' L

Casam Heagy

July 7/83 A18

A18-1 OK + subcrop light green green volcanic
[fractured] with zone of or-weathering Fe carb
altm + veins - fr. But qtz vein to 5cm wide.
zone not ore but a 2m strip of talus
natural BT 14

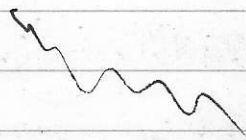
73736 - or weathering Fe carb - qtz veining
+ altm of green volc. ± fine pyrite,
and traces of fuchsite (transp. or silic)
matly float blocks below or of volc br
with epidote veining

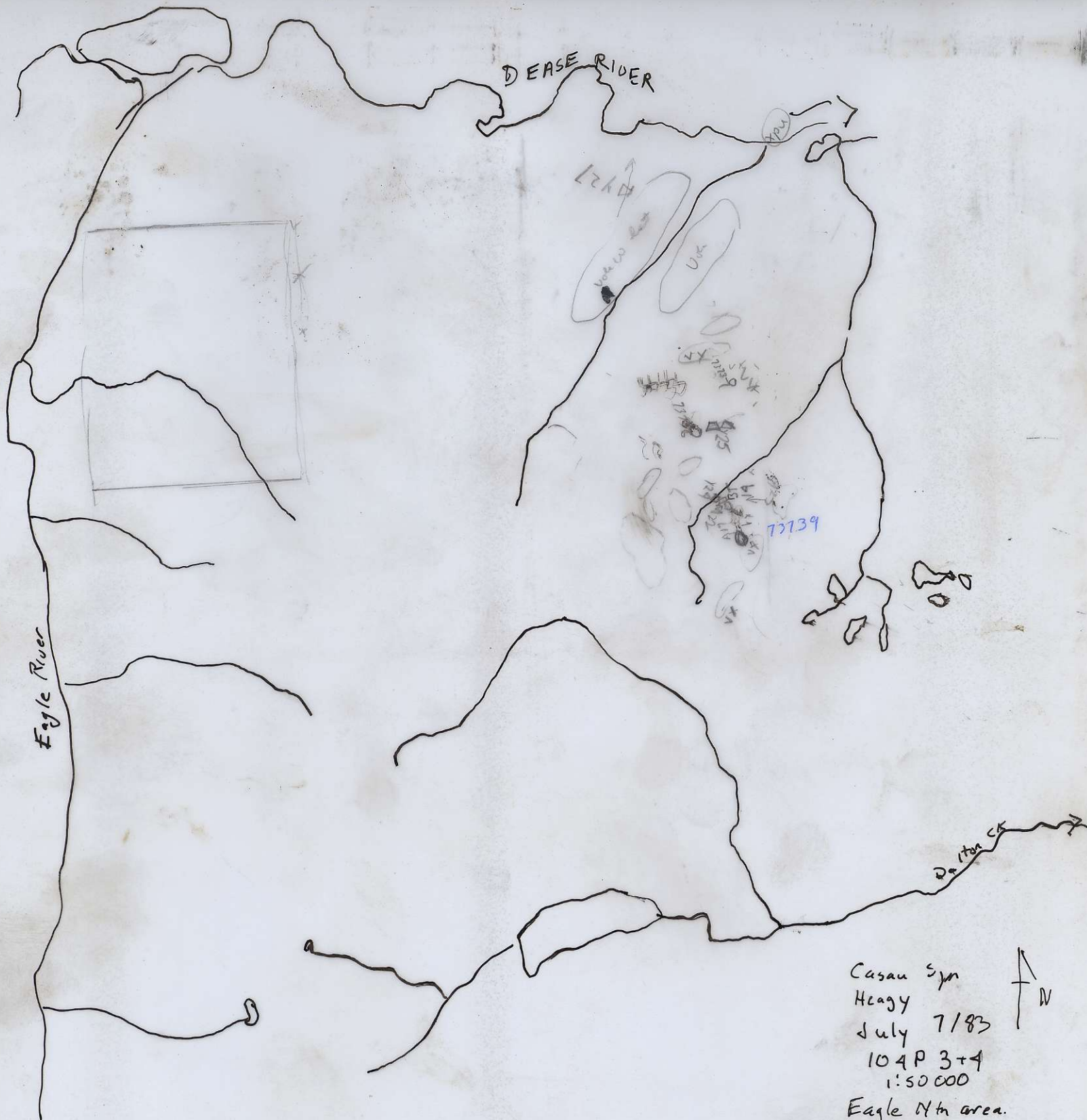
73737 - small fractures in mag volcanic breccia
with qtz-^{Fe}carb ± transp. pyrite veining
altm area - 30cm wide not vertically
continuous

rocks along north off ridge
Similar green chl-epidote volc breccia tufts
interbedded with v of gr white bed

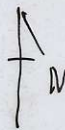
cliff

m





Casau Syn
Heagy
July 7/83
104P 3+4
1:50000
Eagle Nth area.



July 8/83 A19 Heagy Cascade
104 P 3+4 Eger Mtn area

A19-1 73790 - micropelite-gtz - Fe carb - traces py, aspy (?)
41 - Fe carb-gtz - ^{ch} + traces py, micropelite (siliceous grey).
venery + altid nodules. siliceous py ls

small areas of or-br weathering Fe carb seen +
adj altm in part associated with grey
lst nodules within green fine fragments
volcanics (w epidote - calcite + gntz)

73790 - piece of subvol flt fine nodules
fine or's of 73791. Zones are not linear
or continuous. Lst with an area is siliceous
other parts of unsiliceous grey lst with
a few nodules. or occurs along shallow
snow gully on top of hill -

BT-15 10 cm yw-br silt, sand, gravel talus/sand
or small round with Fe carb gtz gravelly
float - adj to subvolcanics of nodules,
float of Kgm.

B-14 10 cm or-br clay, silt, no org, B horizon,
float/float of Fe carb-gtz or w
traces of micropelite at top of 2m v 20m
5 top of Fe carb talus above BT-15 area

BT-16 subvol 2-3 m with NW trending
Fe carb-gtz + rare py, micropelite,
siliceous or frags 100m south of BT-15 zone

bed of bk argillite strikes NW across
top of hill, ~ 20m ??
break into v.ole + qtz veins then
no o/c

73742 float block of Fe carb-qtz
-nonpat. py (cov?) - qtz vein streaked
in v.ole.

73743 - subcrop (talus blocks just above

73744 - floor top of hill

+ 1m wide zone carb^{in v.ole} all in v.ole

Cut by qtz streak (to bx) trace of gallery
bk sphaerite, pyrite in veins

Y-28 1m, 10cm, mod, gy S-T sand, floor
large Kgm boulders, no v.ole, hfts bk arg
Subcrop ~ 50m upstream of Fe carb alt v.oles

74745 small fault breccia in qtz-carbonate
~ 20cm wide in stream chert with gy
Cory

Y-29 4m 10cm mod br silt to gy
flt Kgm, v.ole, (min carb) chert ss, Cory

Y-30 1m BK mod br silt to gy, Kgm
hfted arg, Cory, v.ole

Y-31 1m, 15cm rd, br, un, volc,

73746 B- siliceous volc w Fe carb alt. (cont in
bedded grey ± traces manganese) gtz vesicles
for relief to North East

73747 D - Fe carb gne in Payson Vol.

DEASE RIDER

73797
Vols
V. Vandy Fe comb 20
Vols 873746

73790 91

8716
8715
8714
8713
8712
8711
8710
8709
8708
8707
8706
8705
8704
8703
8702
8701
8700
8699
8698
8697
8696
8695
8694
8693
8692
8691
8690
8689
8688
8687
8686
8685
8684
8683
8682
8681
8680
8679
8678
8677
8676
8675
8674
8673
8672
8671
8670
8669
8668
8667
8666
8665
8664
8663
8662
8661
8660
8659
8658
8657
8656
8655
8654
8653
8652
8651
8650
8649
8648
8647
8646
8645
8644
8643
8642
8641
8640
8639
8638
8637
8636
8635
8634
8633
8632
8631
8630
8629
8628
8627
8626
8625
8624
8623
8622
8621
8620
8619
8618
8617
8616
8615
8614
8613
8612
8611
8610
8609
8608
8607
8606
8605
8604
8603
8602
8601
8600
8599
8598
8597
8596
8595
8594
8593
8592
8591
8590
8589
8588
8587
8586
8585
8584
8583
8582
8581
8580
8579
8578
8577
8576
8575
8574
8573
8572
8571
8570
8569
8568
8567
8566
8565
8564
8563
8562
8561
8560
8559
8558
8557
8556
8555
8554
8553
8552
8551
8550
8549
8548
8547
8546
8545
8544
8543
8542
8541
8540
8539
8538
8537
8536
8535
8534
8533
8532
8531
8530
8529
8528
8527
8526
8525
8524
8523
8522
8521
8520
8519
8518
8517
8516
8515
8514
8513
8512
8511
8510
8509
8508
8507
8506
8505
8504
8503
8502
8501
8500
8499
8498
8497
8496
8495
8494
8493
8492
8491
8490
8489
8488
8487
8486
8485
8484
8483
8482
8481
8480
8479
8478
8477
8476
8475
8474
8473
8472
8471
8470
8469
8468
8467
8466
8465
8464
8463
8462
8461
8460
8459
8458
8457
8456
8455
8454
8453
8452
8451
8450
8449
8448
8447
8446
8445
8444
8443
8442
8441
8440
8439
8438
8437
8436
8435
8434
8433
8432
8431
8430
8429
8428
8427
8426
8425
8424
8423
8422
8421
8420
8419
8418
8417
8416
8415
8414
8413
8412
8411
8410
8409
8408
8407
8406
8405
8404
8403
8402
8401
8400
8399
8398
8397
8396
8395
8394
8393
8392
8391
8390
8389
8388
8387
8386
8385
8384
8383
8382
8381
8380
8379
8378
8377
8376
8375
8374
8373
8372
8371
8370
8369
8368
8367
8366
8365
8364
8363
8362
8361
8360
8359
8358
8357
8356
8355
8354
8353
8352
8351
8350
8349
8348
8347
8346
8345
8344
8343
8342
8341
8340
8339
8338
8337
8336
8335
8334
8333
8332
8331
8330
8329
8328
8327
8326
8325
8324
8323
8322
8321
8320
8319
8318
8317
8316
8315
8314
8313
8312
8311
8310
8309
8308
8307
8306
8305
8304
8303
8302
8301
8300
8299
8298
8297
8296
8295
8294
8293
8292
8291
8290
8289
8288
8287
8286
8285
8284
8283
8282
8281
8280
8279
8278
8277
8276
8275
8274
8273
8272
8271
8270
8269
8268
8267
8266
8265
8264
8263
8262
8261
8260
8259
8258
8257
8256
8255
8254
8253
8252
8251
8250
8249
8248
8247
8246
8245
8244
8243
8242
8241
8240
8239
8238
8237
8236
8235
8234
8233
8232
8231
8230
8229
8228
8227
8226
8225
8224
8223
8222
8221
8220
8219
8218
8217
8216
8215
8214
8213
8212
8211
8210
8209
8208
8207
8206
8205
8204
8203
8202
8201
8200
8199
8198
8197
8196
8195
8194
8193
8192
8191
8190
8189
8188
8187
8186
8185
8184
8183
8182
8181
8180
8179
8178
8177
8176
8175
8174
8173
8172
8171
8170
8169
8168
8167
8166
8165
8164
8163
8162
8161
8160
8159
8158
8157
8156
8155
8154
8153
8152
8151
8150
8149
8148
8147
8146
8145
8144
8143
8142
8141
8140
8139
8138
8137
8136
8135
8134
8133
8132
8131
8130
8129
8128
8127
8126
8125
8124
8123
8122
8121
8120
8119
8118
8117
8116
8115
8114
8113
8112
8111
8110
8109
8108
8107
8106
8105
8104
8103
8102
8101
8100
8099
8098
8097
8096
8095
8094
8093
8092
8091
8090
8089
8088
8087
8086
8085
8084
8083
8082
8081
8080
8079
8078
8077
8076
8075
8074
8073
8072
8071
8070
8069
8068
8067
8066
8065
8064
8063
8062
8061
8060
8059
8058
8057
8056
8055
8054
8053
8052
8051
8050
8049
8048
8047
8046
8045
8044
8043
8042
8041
8040
8039
8038
8037
8036
8035
8034
8033
8032
8031
8030
8029
8028
8027
8026
8025
8024
8023
8022
8021
8020
8019
8018
8017
8016
8015
8014
8013
8012
8011
8010
8009
8008
8007
8006
8005
8004
8003
8002
8001
8000
7999
7998
7997
7996
7995
7994
7993
7992
7991
7990
7989
7988
7987
7986
7985
7984
7983
7982
7981
7980
7979
7978
7977
7976
7975
7974
7973
7972
7971
7970
7969
7968
7967
7966
7965
7964
7963
7962
7961
7960
7959
7958
7957
7956
7955
7954
7953
7952
7951
7950
7949
7948
7947
7946
7945

EAGLE RIVER

Dalton Creek

CASAU
Eagle Mtn
area.
Heavy
July 8/83
104 P 3+4
AN

July 9/83
104016F

A20

Neagy CASAU

A20 F-1 front have small box, surface of
m.g diorite near pyroxene inclusions
pure qtz + chl + epidote

y 32 5m, 10cm mat, ~~lt grey~~^{bn} un, diorite flt

y 33 1m, 15m, gy, un, diorite by
and mixed glacial gravel

y 34 2m 20cm mat, gy, s-gg, ss + clor

Summary

Entire hill is m.g diorite to
qtz diorite + pyroxene inclusions
except small area of rock chert (qtzite)
domately lt grey. Some dk grey.
Little glacial float seen includes vesicular
basalt, snowflake volc, Kgm.





EAGL 1
A.E. Heagy 241815

CASA
July 10/83
Heagy

CASAU, Heagy A21 July 11/81
109 P B Sylroader PK

main pk - dk weathered volcanic breccia
'matrix' lighter weathering, green ~~py~~
fragmental volcanics.

gully on NW side limits weather
zone of qtz - calcite - Fe-cab ^{fluorite} alt in along
fault(?) / fracture. Sample # 73771
zone ~ 5 m wide, with several narrow
offshoots taking off ~ vertical, trending/perched
out to northw continues in talus to SE,

ridge to SW of peak - bk + wt ssp. pyroxene
fairly ~~major~~ ^{large} b/c blocks interleaved
one or weather zone Fe-cab-qtz alt. BT17

to SW of u-m into interbedded silt, bk ct ss,
Chert, chert + shale + shaled to form pseudosandstone
Some interbeds of volcanics.

73772 - py in ct nodules / bed

73773 or weather siliceous bx. - manganese py?

V35 - 1m, 15cm mod, grey clay + gravel, shale, volc,
or weath ^{1 gr} (seip) ^{altic} ss

V36 : 2, 5cm, mod gy, clay + sand, volc

lower down ck local fl of dk gy lat / also volc
cl, slate

73774 BT18 gravelly clumps lg blocks loc of rusty to bleached
highly sheared argillite ^{serate} + py (generally ^{enclosed}) fault gouge?

73775 - ^{also} Pyritic in ^{with} argillite alt. n.
seds (gy argillite / Est).

73776 - turquoise blue stained volcanic rr
+ 1 cm wide. gy qtz vein in volc.



McDane

IR

DEASE RIVER

Umex claims

FOUR MILE RIVER

o/c n

Mud Bank
23779
3779

o/c

o/c

435

3770

3772

3771

Mud Bank gone
75 yards

3773

3774

3775



104 P3

Casau Heagy

July 11/83

A21

Sylvester Peak

50000

CASAU HEAGY

July 12/85

A22

109 P/B N of Dalto Claims

A22-1 DK's of rusty ^(to dkgy) weathers
ephane to f.g. wt to green rhyolite/dacite
plug? ^{at 15} → 3% few disc silvery pyrite
locally ^{dis} epidote & fine gr. - epidote veins (barren)

73780 - grab sample of DK's on S side

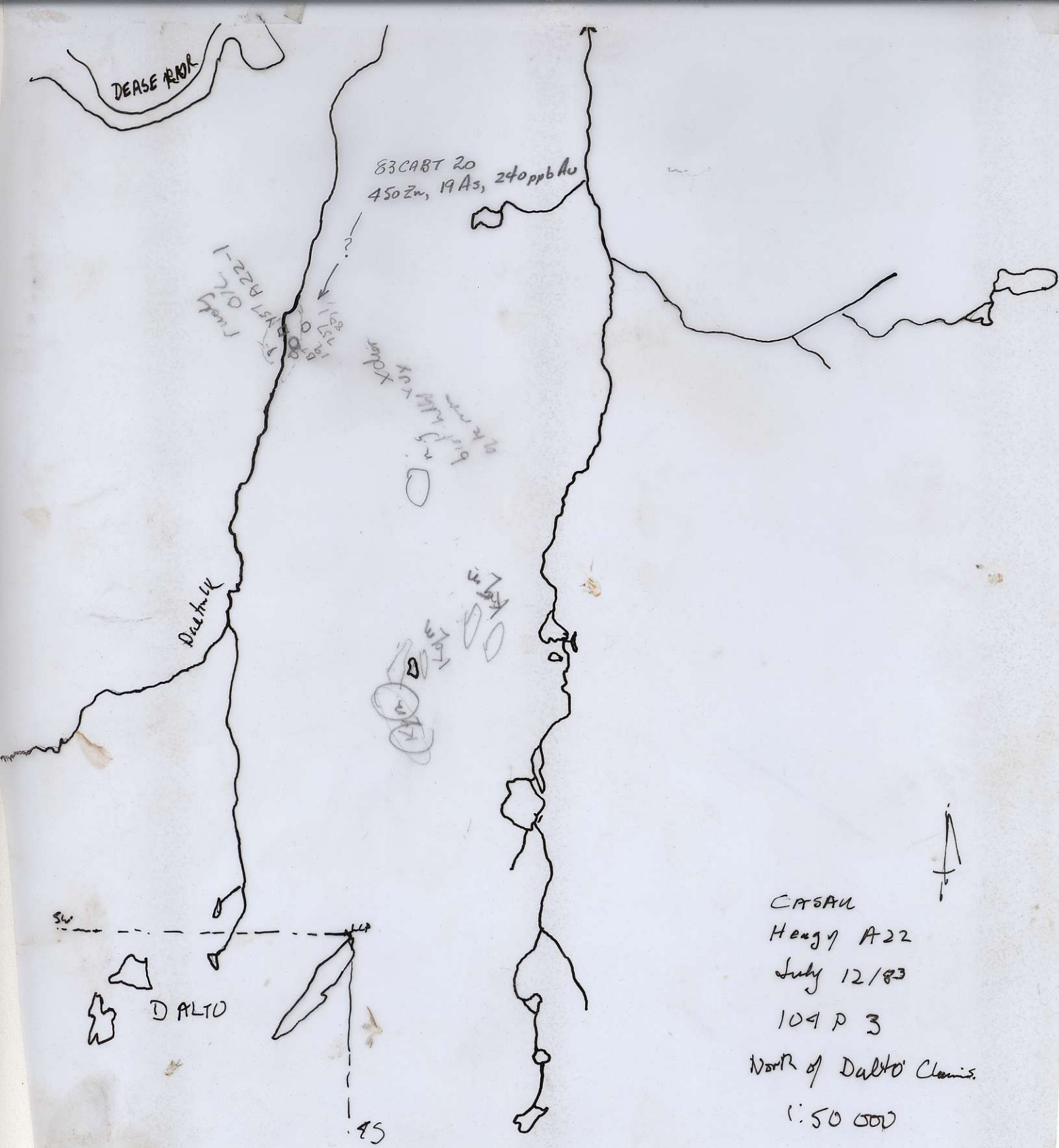
81 - Sample of pyrite at fin ~ 20m above creek

BT-19 - talus from deep gully w S lens

Y37 - poor sample from side of CK

5m, 50cm, fort, gy - sand, silt, gravel
above most of rusty DK's

flt associated dark, quartz, Kgm,



CRS AU
 Heavy A22
 July 12/83
 104 P 3

North of Dalto Claim.

1:50 000

CASAN

July 13/63

A23

Heagy

104 P 1372
0 9, 16

A23-1 hill. interbedded dk gy phyllite
mudstone, volcanic ss, grey-green meta volc?
strong vertical joint (qtz - ser schist)
strong X-axis cleavages (weir on)

slope above stream ~ 15 m thin
more competent bed. Has numerous irregular
slaking shaly slipping wt 1/2 veins
1 to 30 cm. also veins on S bank
above fork

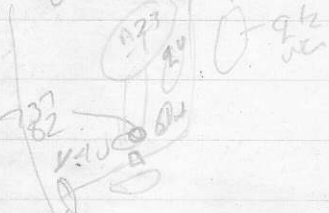
Y38 - 2 m 20 cm met, s+ga grey
slate or w qtz veins also flt + fine gr. volc, meta basalt

Y39 - 1 m 10 cm met, con, gy, br
flt slate, volc, pyro

lower down CK orc's of bk slate, chert
mar^m 1st, dk gy (chert?) ss. ± qtz veins

scarp 73782 - limited sheeted area in
chert for qtz veins + v. mar from of v. pyro

for ^{Q₂₀}
139 144 1436



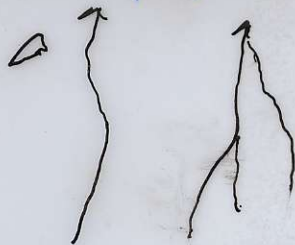
Y40 - 2 m 25 cm, m,
ss, con, slate, ch, lat, qtz vein flt

River
Pond

73782

Along
Chief CK.

Chief Crp



West Edge of
Map Sheet



Heavy 104P12W
1:50,000

July 1/83

South of Chief Crp

Aborted. due
to helicopter
trouble

Hoagy Casan
109 P 3

July 14 / 83
Sheep mt. area

A 24

A24-1 volcanogenic ss, by on ridge back,
from weathering fairly mafic, on east side of
mtn interbedded volc, dk gy chert, chert-qtz ss.

73783 - brownish tuffaceous ss in sq. - no alt
of adj o/c chert, volc

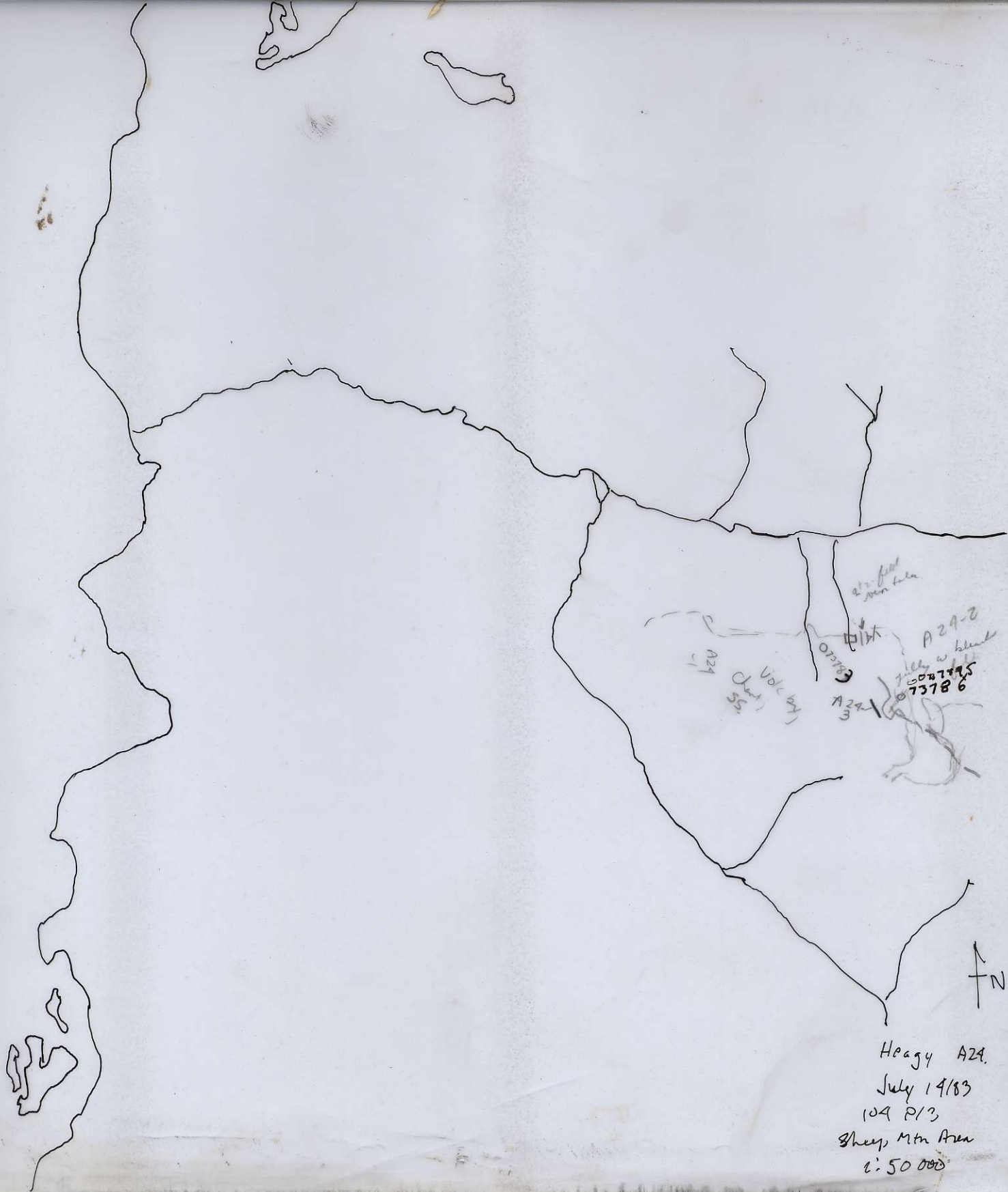
Y91 - 1/2 10cm, red-foot, gy, ss, o/c of
volc ss, fct, volc chert, ss,
(some of the blocks are
very)

A24-2 gully with talus largely
chert volc but also laminar bleached
desilicified rx - 73784, diorite (qtz epid. etc.)
rare calcite-diorite ?? w trace of malachite 73786
or w fine qtz veins w dk gy matrix

73786 - malachite chert w malachite + bk spots (2° Cu min)

A24-3 Shaded chert horizon source of above
bleached rx. ~50m strike length
perches out at ridge back + at stream gully
down side to SW. Chert ~ 8m max thickness
bleached areas much smaller - spots
at base above diorite (just above a well)
chert rusty & fine py cubes.

73787 - qtz - pinkish feldspar ?? seen
in volcs w traces of blue mineral also
white gypsum.



Hoagy A24.
July 14/83
104 P/3
Sheep Mtn Area
1:50 000

SHEEP MTN

CAMP CHARLIE

104 P/3

SHEEP MTN

73783

Au

1200

As

225

Zn

975

Cu

Ag

73784

160

41

171

73785

20

9

164

660

73786

410

4

1050

3300

1.1

73787

10

7

128

Y41

410

6

133

July 15/83

104 B/3 · A25 Sylwest

A25-1 dk green gy andrite

PK area

Y 42- .5 10cm, S, gy dist, no flt
some organic

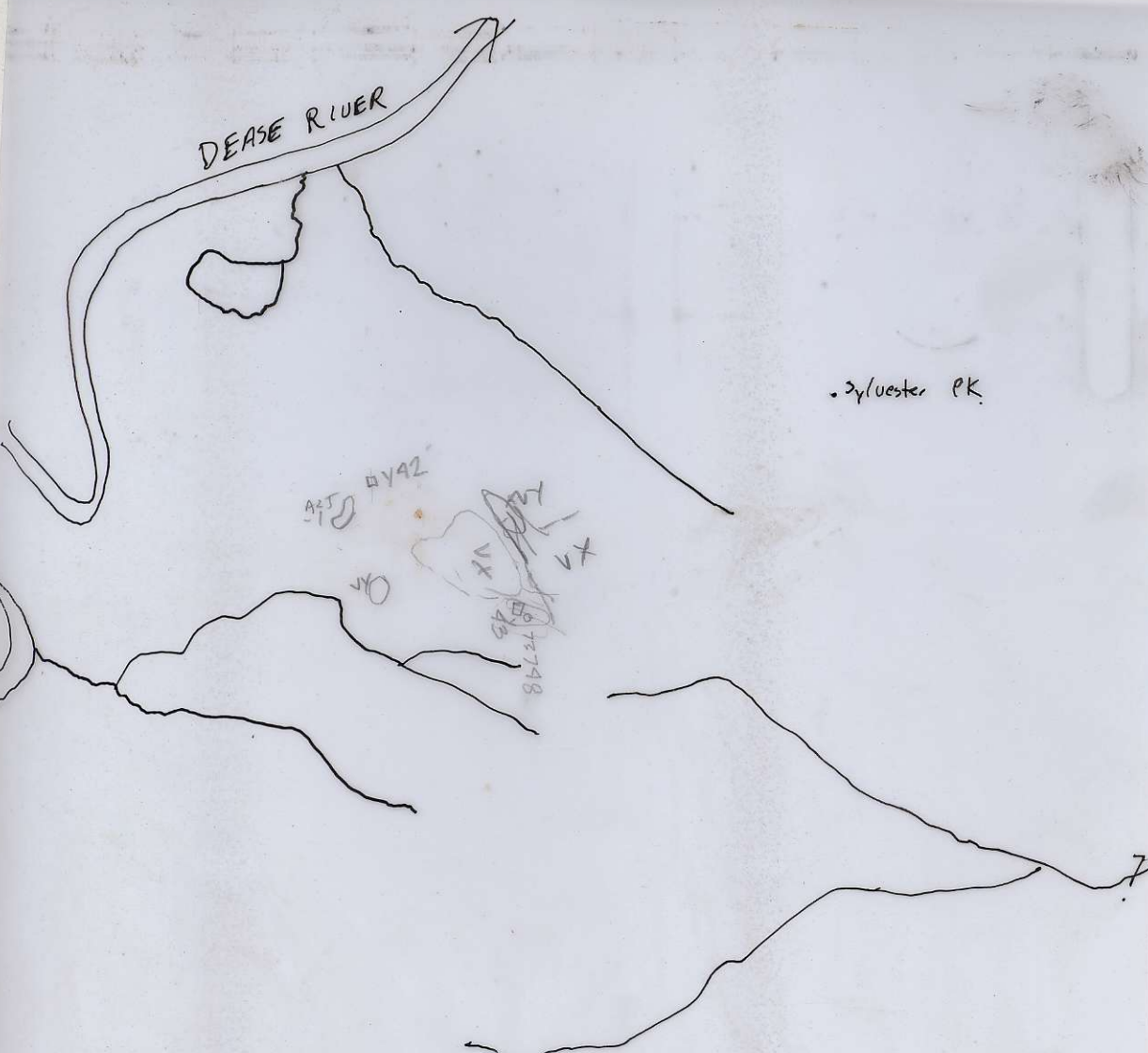
br under f of subltuffe f. from
the base of e.g. tuff with
peacock/turquoise blue mica/sph

Y 43 .5, 15cm m f, gy, im, chert
for bk gy slt, lat, ~~arg~~ volca

73778 just system

1cm size gy & to var. thin Fe carb
also dk gy carbonaceous. Tall. of organic
in calcareous gr. argillite

DEASE RIVER



• Sylvester PK.

Sylvester PK area

104 P 3

Keagy A25

July 15/83

1:50 000

✓

July 16/83 A 26 Heavy CASPER
104 O ICE - claim my sheet 158000

A 26-1 10-15m wide shallow gully
trending 028° across top of hill N.E. of
greenish grey calcareous tuff & chlorite spots (frags)
at bottom edge of gully + as float in gully bottom
Fe carb - silicified ^{fragments} alt m

or-br weathering, periglacial bleached to
light grey rim etc - carb veins to strand
cm rare traces of fine py (73777) possibly
other sulfides but too fine to identify } layer

greenish patches due to charite (possible microfossils)
rare purplish tinge - 4/ dis galen or fluorite (??) (73777)
one area or side w fg boulders + calc blocks
of wt qtz - SK qtz ch. sep. even to +30cm
(73778).

DT 21 - or-br - talus gravelly in gully bottom
small patches in grassy/woody area
- can't trace gully or Fe carb flt down hill to
North due to glacial talus float ^{over} in grass.

to south trace zone to saddle 73779
- trace fluorite?

The open @ than valley are glacial con
masses covered qtz-Fe carb veins found below rock
(alt m ??) on NW side 73750

B-15 or lower soil B non developed on
15cm nod-stony slab glass + sand shatters very

below sea level in center area of valley back
cut top with slaty det.

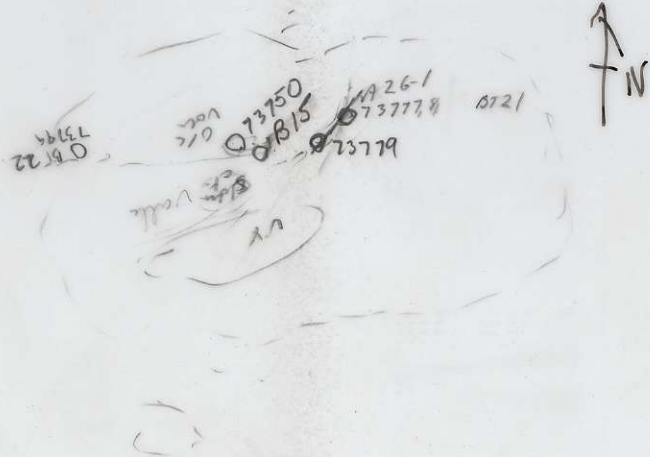
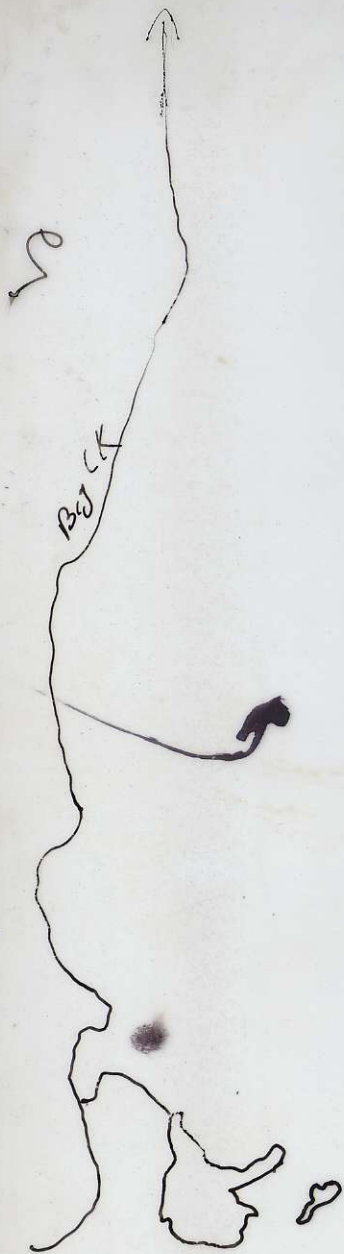
53120

follow road or along side of valley (to west)
- several 100. m's no ore or pit below
then just at west side of hill top get
bar of mod lentic gravelly talus

Fe carb-gtz alt'd ore - 73749 BT22

~10m wide (inc talus approx 1 x 50 m, 090°)

disappears under veg to east & down hill to
west



Casau
104016 E
1:50 000 Claim sheet
A 26
July 16/83
Heagy
N of L. Ranchara R.

L. Ranchara River

Cascan July 17/83 A 27 Heavy
104P 5 Cirque NW of Baller

A 27-1 relatively finely interbedded fragments
basaltic volcanic - or so weathering dk green-grey
& wt weather dk gy chert - at least
locally sheared about 130°/N 50
that beds broken up pieces
+ more qtz carb + ^{feldspar} veins & chert.

73788 - qtz-filled vein ~ 10cm wide

A 27-2 west wall of cirque thick interbeds
of volc + bk chert dipper to SW

- gully in cirque back of fault head on edge
Two small areas (~ 15 x 30m?) of BT 24
white siliceous chert (73789 B)

27-3 - volc to ^{A2} chert ~~volc~~

small area of volc (talus) with weak
Fe carb-qtz veins (73790 B)

- talus at base of one of rocky stand (part to bk)
with malachite, 2° Cu oxide (bk) + fine py also
limonite + hematite + Mn oxide staining + veins
+ fine qtz veins

27-4 u-m (bk) superimposed strikes across
talus to N end of bk and along bottom edge of
knoll to west of CK of area ~ 5 x 5m. Of or vol
Fe carb rx also smaller area of Fe carb

CK
x 4d 2m 15cm nod of, 7y-60 um ^{seg} Fe chert filler

