

672559

August 22nd, 1969.

Mr. W.F. Knox,
President,
Ajax Mercury Mines Ltd.,
685 - #2 Bentall Centre,
Vancouver, 1, B.C.

Dear Mr. Knox:

Enclosed are two maps of the Allendale Lake group of claims showing the general outcrop area on a scale of 1" = 400', and a detail map 1" = 100' of a selected area around 2 South to 6 North on the baseline.

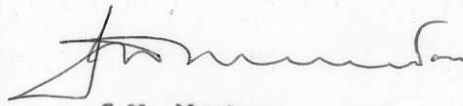
All outcrops noted on the 1" = 400' map consist of coarse grained syenite with widely scattered 2"-12" xenoliths mineralized with bornite, malachite, and azurite. Not all xenoliths located were mineralized, but those containing visible mineral are noted on the map.

Fifteen samples were taken over the property with their location shown on the maps. The series from 1854-1859 constituted 500 lbs. total, and the series 1860-1864 totalled 400 lbs. with sample 1865 approximating 100 lbs. These samples were crushed and split by a small crusher on the Dusty-Mac property at O.K. Falls, with the final crushed fractions submitted to T.S.L. on August 22nd for Ag-Cu assay.

It will be noted that the area outlined in brown indicates the initial 10 miles recommended for an induced polarization survey.

Yours truly,

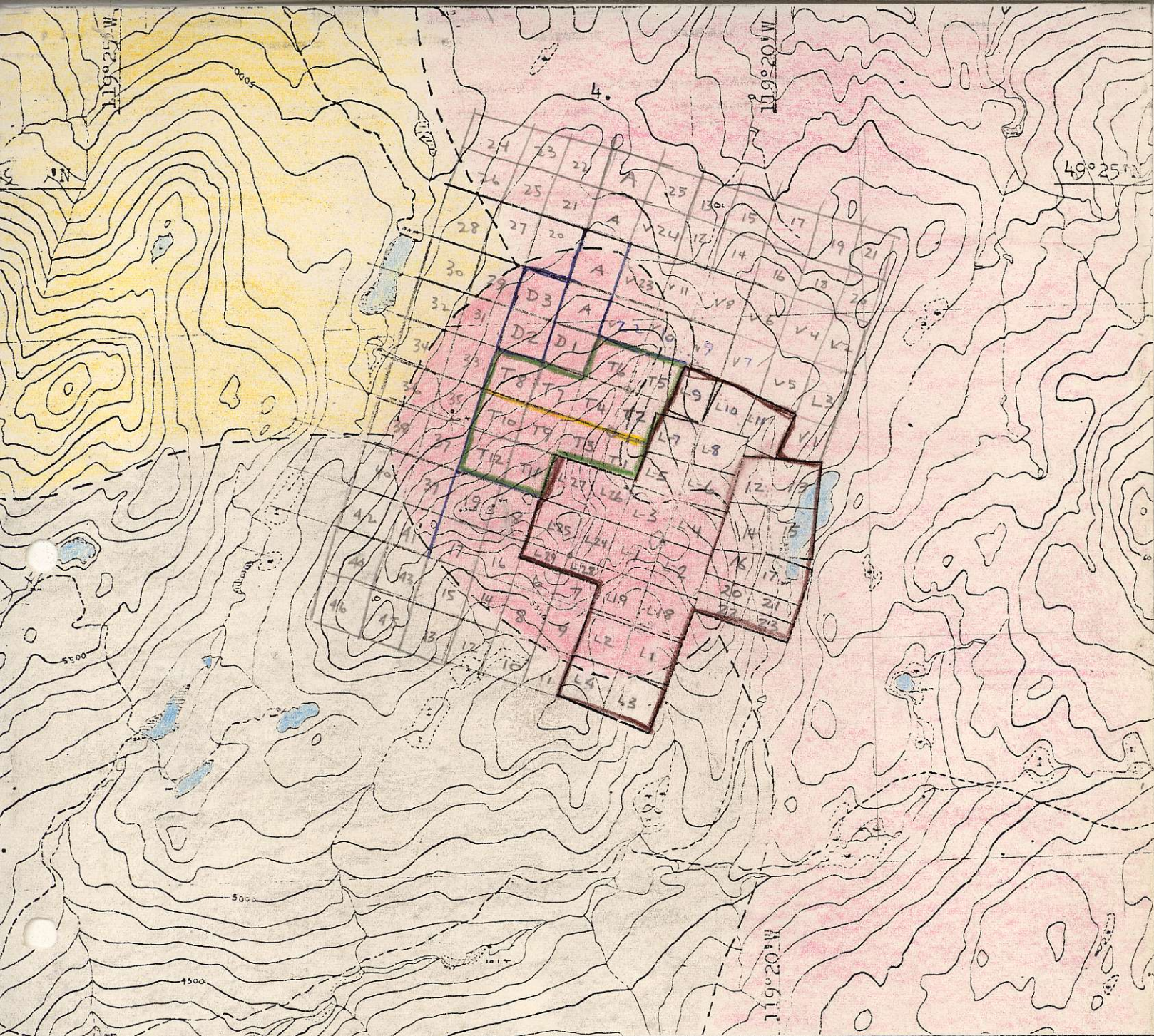
BACON & CROWHURST LTD.



J.W. Murton

*1" = 400' map
in file A-10*

JWM/ic



GUNNEX LIMITED

VANCOUVER 2, B. C.

LYNX GROUP
Okanagan Falls, B. C.

LOCATION MAP and GENERAL GEOLOGY

Geology adapted & revised from G.S.C. Map 15-1961

Oligocene



Coryell monzonite, shonkinite

Cretaceous



Valhalla granite, granodiorite



Nelson granitic rocks

Pre-Permian



Monashee gneisses, schists

