

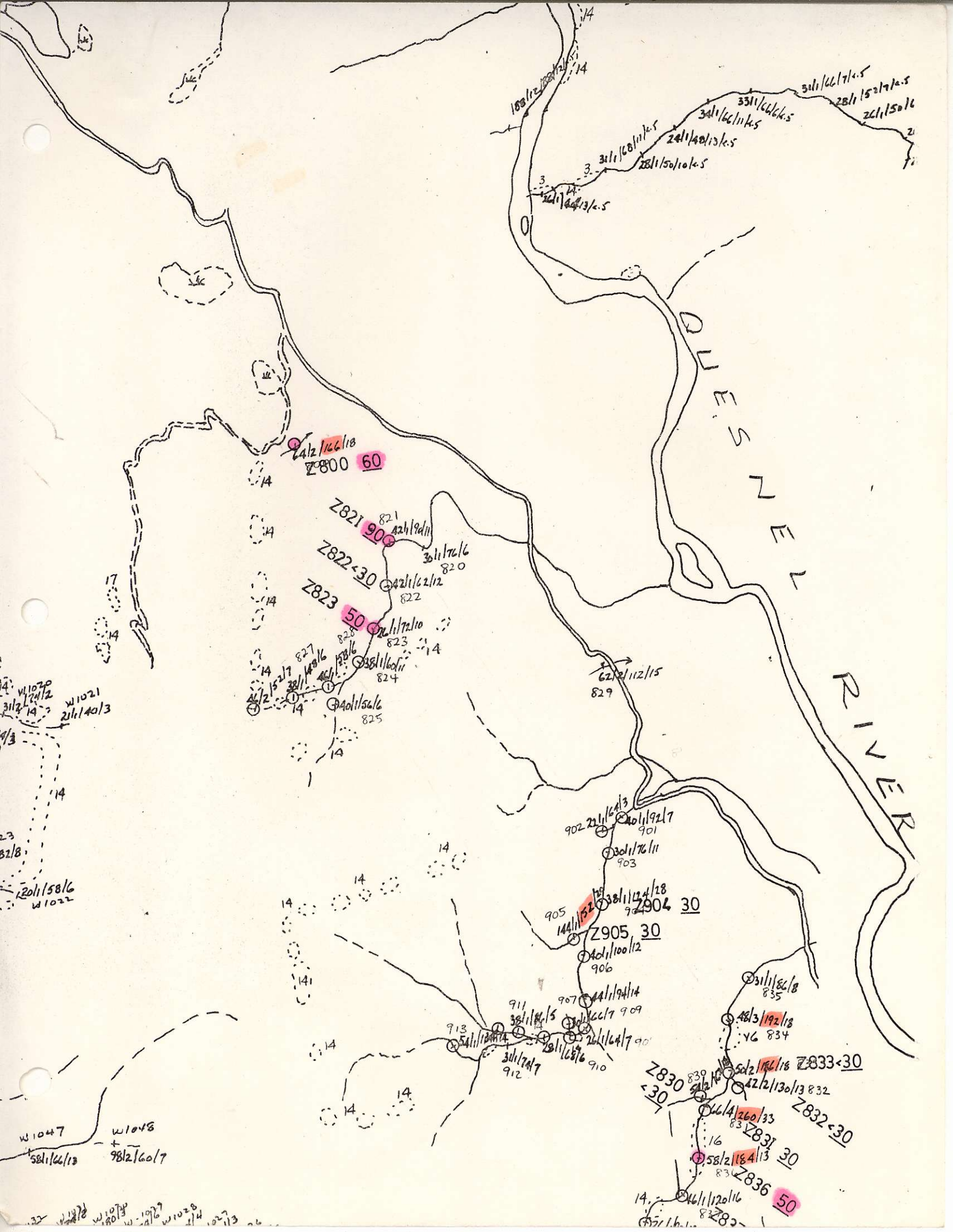
QUESNEL RIVER AREA  
Maps 93B/16E & W  
(Figure IV)

During the latter part of September and most of October, prospecting crews mapped and silt-sampled in the region south of Quesnel toward the location of Gibraltar Mines. (Figure IV)

Figure III outlines the geology on the F.P. Mooney copper showing. Minor copper mineralization occurs in bands of rhyolite and feldspar porphyry. Copper values were too low and widths too narrow to indicate an economic deposit.

Prospecting failed to locate showings of importance but silt sampling returned several moderately anomalous values in both copper and molybdenum and these should be checked out early in 1973.

Since the intrusives at Gibraltar have no significant magnetic susceptibility, prospecting targets in the Gibraltar area may be extremely subtle in areas of overburden.



DUNES RIVER

212/166/18  
Z800 60

Z821 90

Z822-30

Z823 50

Z904 30

Z905 30

Z833-30

Z832-30

Z831 30

Z836 50

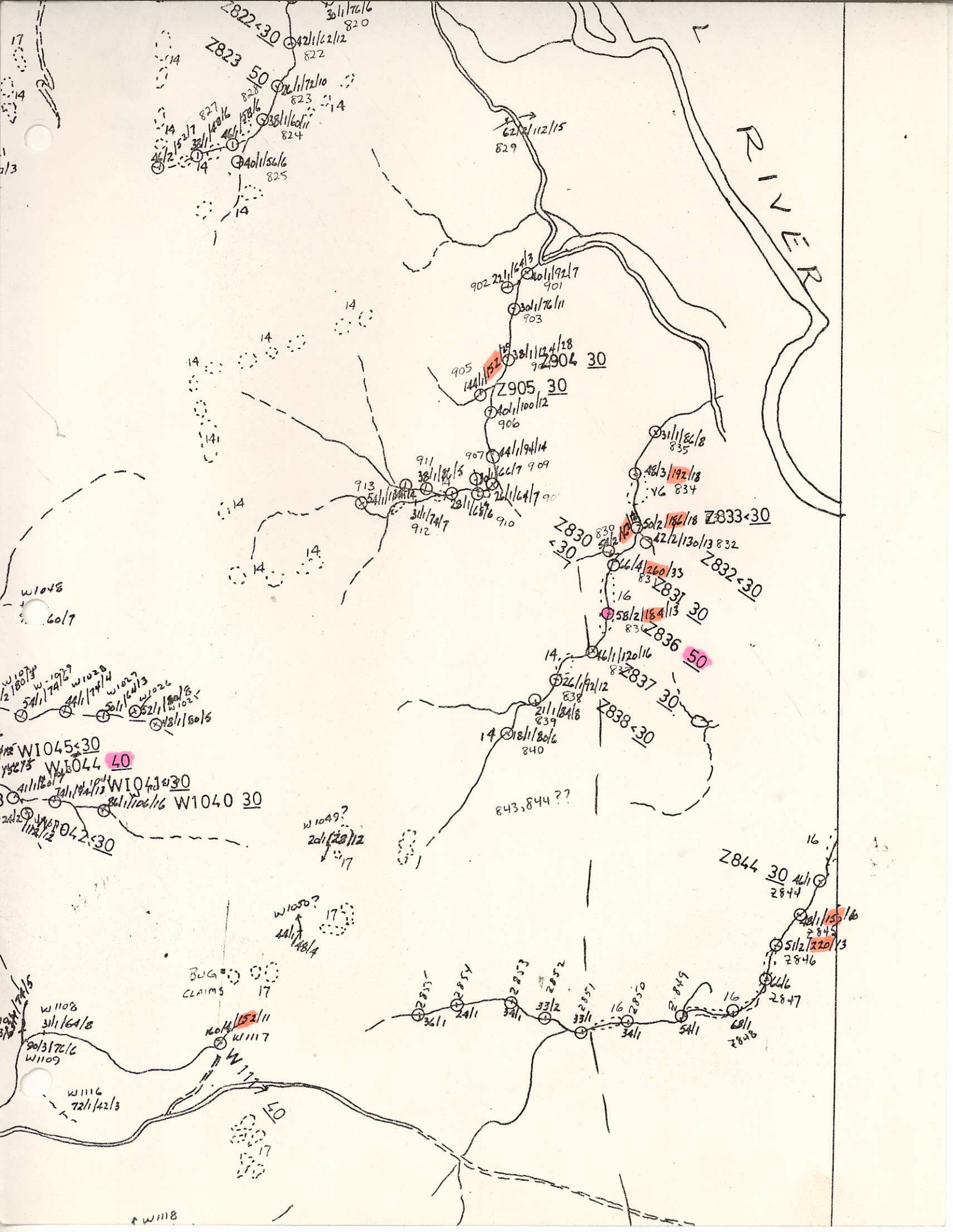
W1020  
W1021  
W1022

W1023

W1047  
W1048

W1049  
W1050  
W1051  
W1052  
W1053  
W1054  
W1055  
W1056  
W1057  
W1058  
W1059  
W1060





RIVER

Z822-30

Z823 50

Z904 30

Z905 30

Z830 30

Z833-30

Z832-30

Z837 30

Z836 50

Z838-30

Z844 30

W1048

W1045-30

W1044 40

W1043-30

W1040 30

W1108

W1109

W1116

W1117 40

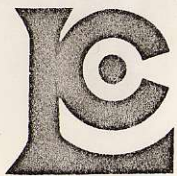
BUG CLAIMS

W1049?

W1050?

843, 844 ??

W1118



# CHEMEX LABS LTD.

212 BROOKSBANK AVE.  
 NORTH VANCOUVER, B.C.  
 CANADA V7J 2C1  
 TELEPHONE: 985-0648  
 AREA CODE: 604  
 TELEX: 043-52597

• ANALYTICAL CHEMISTS • GEOCHEMISTS • REGISTERED ASSAYERS

## CERTIFICATE OF ANALYSIS

CERTIFICATE NO. 39466

TO: J. C. Stephen Exploration Ltd.,  
 1124 W 15th St.,  
 North Vancouver, B.C.

INVOICE NO. 19602

RECEIVED March 17/77

ANALYSED March 22/77

ATTN:

SAMPLE NO. :	PPB Gold	PPM .Cu	PPM Mo.
✓ Z 800	60	64	2.
✓ 821	90	42	1
✓ 822	< 30	42	1
✓ 823	50	26	1
✓ 830	< 30	<del>54</del>	<del>12</del>
✓ 831	30	66	4
✓ 832	< 30	42	2.
✓ 833	< 30	50	2.
✓ 836	50	58	2
✓ 837	30	46	1
✓ 838	< 30	26	<1
? 841	30	68/4	4
? 842	< 30	50/1	1
? 843	< 30	72/2	2
? 844	< 30	46/1	1
✓ 904	30	38	1
✓ 905	30	144	1
✓ 914	< 30	Sardine 72 Ck.	5
✓ 915	30	94	7
✓ 916	40	156	12.
✓ 917	< 30	38	1
✓ 918	< 30	56	3
✓ 919	< 30	40	1
✓ 920	< 30	56	2
✓ 928	< 30	41	<1
✓ 929	< 30	36	<1
✓ 930	< 30	118	12.
✓ 931	< 30	52	2.
✓ 932	30	40	1
Z 933	< 30	18	<1
✓ W 1008	< 30	42	2
✓ 1009	< 60 *	46	2
✓ 1017	< 60	44	<1
✓ 1018	< 30	134	2
✓ 1038	< 30	86	2
✓ 1039	< 30	80	2
✓ 1040	30	86	1
✓ 1041	< 30	74	1
✓ 1042	< 30	124	2.
✓ 1043	< 30	41	<1

\*Unsufficient sample for lower detection limit



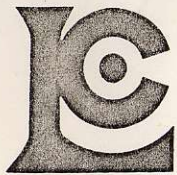
MEMBER  
 CANADIAN TESTING  
 ASSOCIATION

CERTIFIED BY:

*San Amadori*

24199  
 OCT. 30/72  
 2418990  
 Nov 6/72





# CHEMEX LABS LTD.

212 BROOKSBANK AVE.  
 NORTH VANCOUVER, B.C.  
 CANADA V7J 2C1  
 TELEPHONE: 985-0648  
 AREA CODE: 604  
 TELEX: 043-52597

• ANALYTICAL CHEMISTS    • GEOCHEMISTS    • REGISTERED ASSAYERS

## CERTIFICATE OF ANALYSIS

TO: J. C. Stephen Exploration Ltd.,  
 1124 W. 15th St.,  
 North Vancouver, B. C.

CERTIFICATE NO. 39467

INVOICE NO. 19602

RECEIVED

ATTN:

ANALYSED March 22/77

24190  
 Nov. 6/77

SAMPLE NO. :	PPB	PPM	PPM
	Gold	Cu	Mo
✓ W 1044	40	42	< 1
✓ 1045	< 30	66	1
✓ W 1117	40	160	4



CERTIFIED BY: *[Signature]*

Set #3

93B/16E&W

Dragon Lake-Quesnel River

Feb 24/77

The following samples are to be run for Au based on As, Zn, results so far obtained.

<u>Sample No.</u>	<u>Certificate</u>	<u>Date</u>
Z 928-933	39408	Feb 16/77
Z 914-920	39408	Feb 16/77
Z 841-844	39407	Feb 16/77
Z 830-833	39407	Feb 16/77
Z 836-838	39407	Feb 16/77
Z 904, 905	39407	Feb 16/77
Z 800	39407	Feb 16/77
Z 821-823	39407	Feb 16/77
W 1038-1045	39406	Feb 16/77
W 1117	39406	Feb 16/77
W 1008, 1009	39405	Feb 16/77
W 1017, 1018	39405	Feb 16/77

Set #2

Feb 18/77

Dragon Lake - Quesnel River

All listed samples Set #2 were run for Zn, As.

<u>Element</u>		<u>Arith. Mean ppm</u>	<u>Threshold Used ppm</u>
Zn	All samples	134.24	
	5 anomalous results re- moved.	103.88	200
As	all samples	10.90	
	8 samples of 25 ppm and over removed.	8.72	11

Two small areas of anomalous results plot over air mag lows east of Keysley. These lie on a general magnetic trend which has the Dragon Lake gold prospect (adit) at its north end.

These zones are anomalous for Zn, As, Cu, and lie north of the air mag high investigated for Highland Bell in 1964.

Above the road on the west side of Quesnel River the phyllite, argillite horizon shows generally anomalous As levels for the sampled distance of seven miles. This is coincident with a generally higher level of Zn and Cu results as well as significant Mo at the south end.

These areas should be investigated for Au.