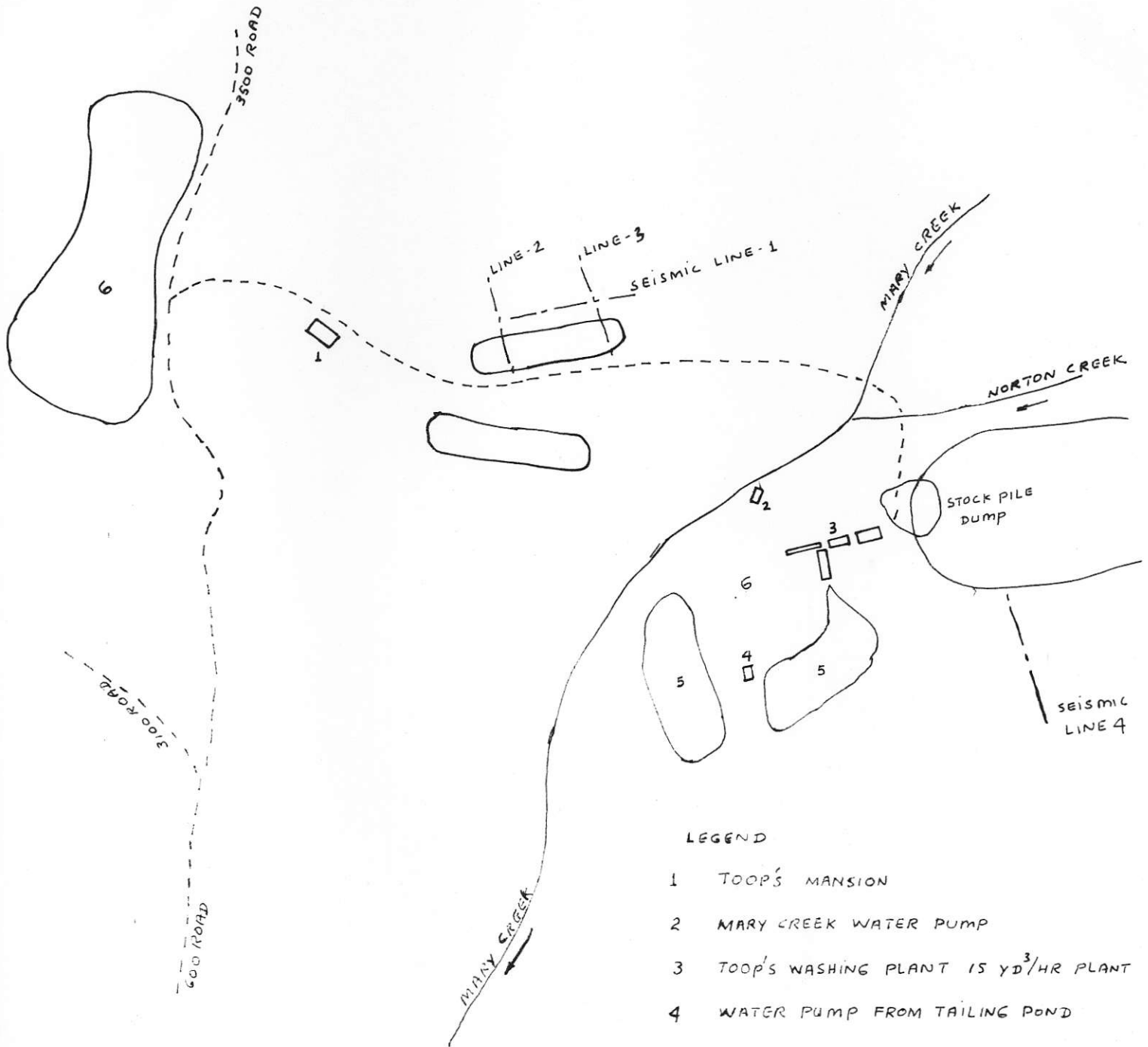


Maps and Figures

672365

1. location map of Toop nugget mine.
2. Geological sketch map of the cottonwood area
3. Geological sketch map of Mary and Norton creek area.
4. Diagrammatic section of the Toop placer pit.
5. Sketch map of Toop's placer leases
- x 6
x 7
8. Schematic layout of placer leases and exploration works performed at Toop during 1990.
9. Schematic layout plan of Toop mine 1990
10. Schematic flowsheet layout of the present washing plant
11. (15 cu yd/hr plant)
Proposed schematic flowsheet of the wash plant to be used at Toop's mine (50 cu yd/hr)
12. Interpretation of seismic line 1
13. " " " " 2
14. " " " " 3
15. " " " " 4
16. Proposed Exploration work to be done at Toop's property.
17. ~~Proposed~~ ~~Exploration~~ ~~work~~ ~~to~~ ~~be~~ ~~done~~ ~~at~~ ~~Toop's~~ ~~property~~.
- x 6. Photographic plates showing auriferous gravels at Toop mine.
- x 7. Stratigraphic column of Alice Creek mine and Toop mine.
17. Bedrock drill ^{locations at} ~~sites~~ ^{of} Toop property in 1978.
18. Surficial geology & drill hole plan ^{on} of Alice Creek property of Blue Grass Mining Corporation.

FIG: SCHEMATIC LAYOUT PLAN OF TOOP NUGGET MINE

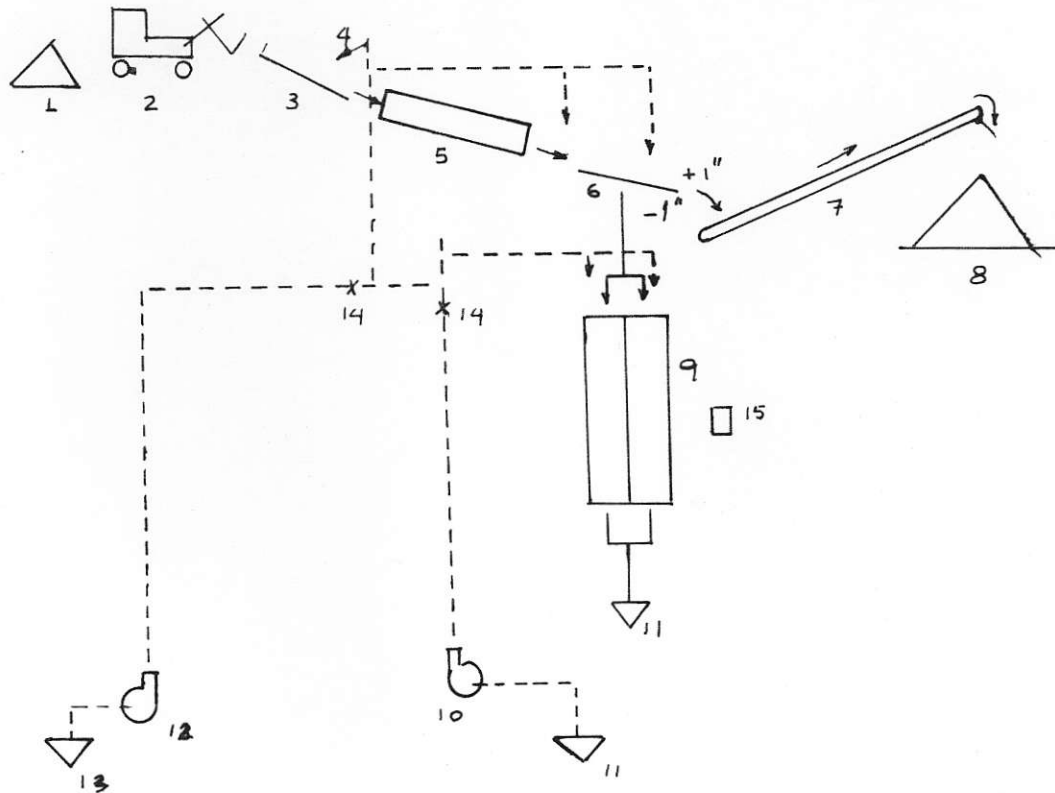


LEGEND

- 1 TOOP'S MANSION
- 2 MARY CREEK WATER PUMP
- 3 TOOP'S WASHING PLANT 15 YD³/HR PLANT
- 4 WATER PUMP FROM TAILING POND
- 5 TAILING POND
- 6 TAILING DUMPS

FIG: SCHEMATIC FLOWSHEET LAYOUT OF THE PRESENT WASHING PLANT

AT TOOP NUGGET MINE 15 CUYD/HR PLANT

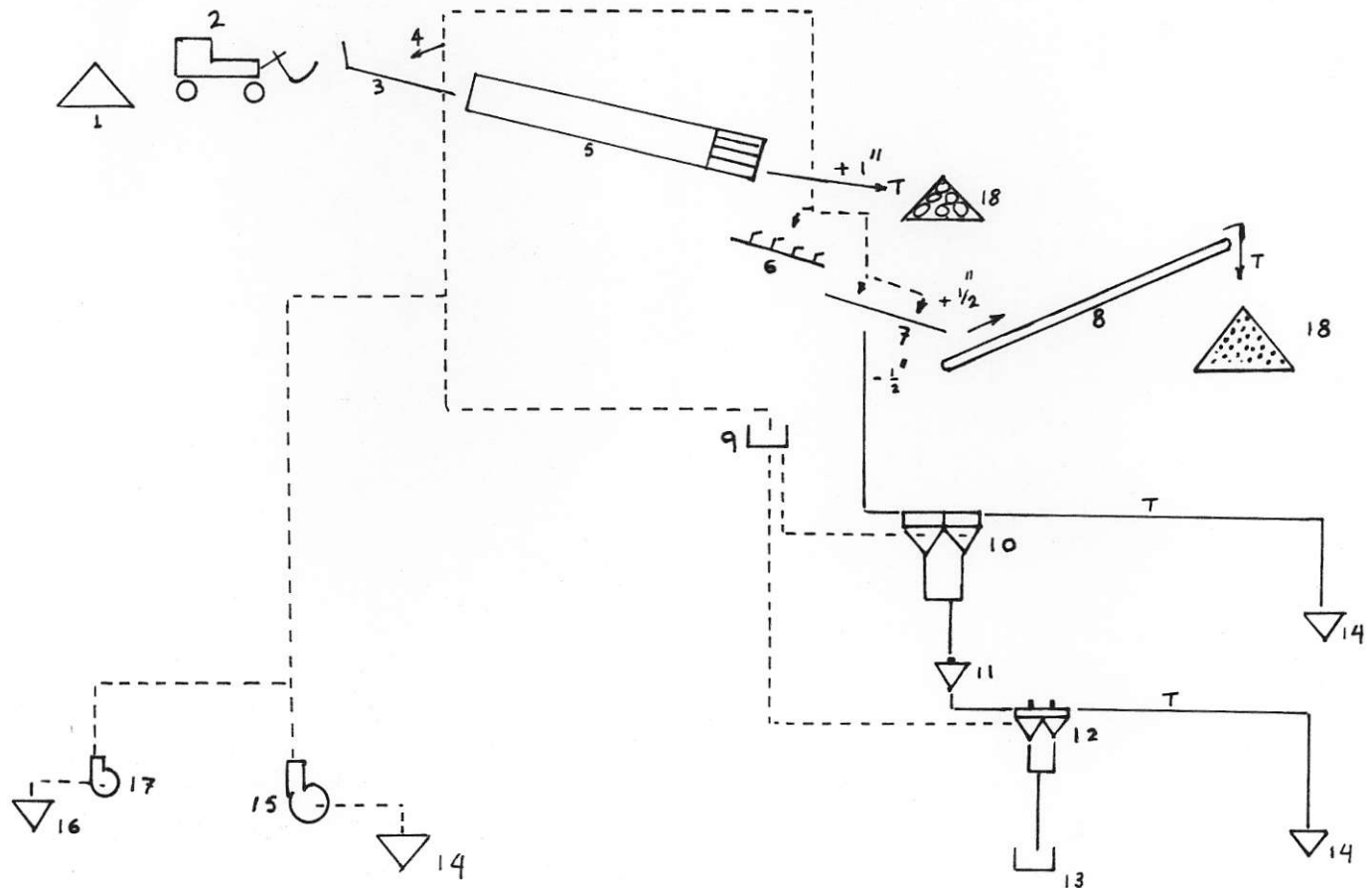


LEGEND

- | | |
|---|-------------------------------|
| 1. STOCK PILE DUMP | 12. MAKE UP WATER PUMP |
| 2. 3 CUYD FRONT END LOADER | 13. MARY CREEK |
| 3. HOPPER | 14. VALVES |
| 4. 2" MONITOR 20 PSI | 15. PULSATOR JIG FOR CLEAN UP |
| 5. 3' ϕ , 17 RPM, 12' L, 3HP, SCRUBBER | |
| 6. SINGLE DECK SHAKING SCREEN 1" \square | |
| 7. 24", 60' L CONVEYOR 5 HP | |
| 8. +1" O/S DUMP | |
| 9. 2 LANES 2' SLUICE, RIFFLED | |
| 10. 5" x 4" WATER PUMP | |
| 11. TAILING POND (100% RECYL-) | |

FIGURE: PROPOSED SCHEMATIC FLOWSHEET OF THE WASHING PLANT TO BE USED AT TOOP MINE

(50 cu yd/HR FEED)



LEGEND

- | | | | |
|---|---|-----|--------------------------------------|
| 1 | STOCK PILE DUMP | 8 | 24" W 60' CONVEYOR FOR O/S |
| 2 | 3 yd FRONT END LOADER | 9 | JIG HEADER WATER TANK |
| 3 | HOPPER FOR THE SCRUBBER | 10. | 42" X 42" END FLOW PRIMARY PANAM Jig |
| 4 | MONITOR JET | 11. | DEWATERING CONE |
| 5 | SCRUBBER WITH 1" □ HOLE AT THE END SECTION | 12. | PULSATOR JIG |
| 6 | 4' X 8' 2" RIFFLED SLUICE SLOPE 1 IN 8 FOR NUGGET | 13. | CONCENTRATE BIN |
| 7 | SHAKER SCREEN 1/2" SCREEN | 14 | TAILING POND (100% RECIRCULATION) |
| | | 15. | 5" X 4" WATER PUMP |
| | | 16 | MARRY CREEK WATER pump FOR MAKE UP |
| | | 17 | WATER PUMP |
| | | 18 | SHAKER O/S DUMP |

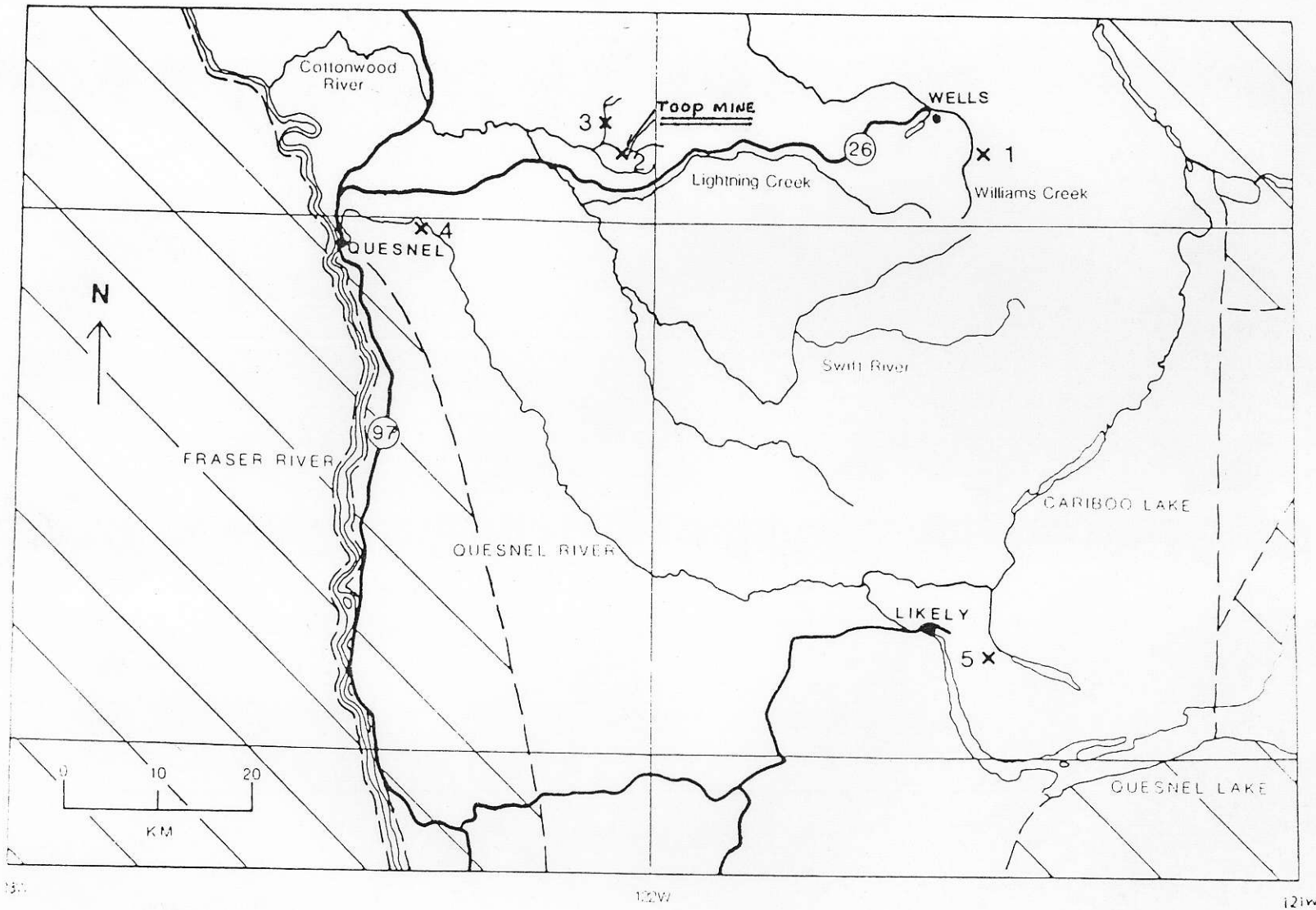


Figure 6-3-1. Location of the Cariboo placer mining area. Study sites discussed are numbered: (1) Ballarat mine, (2) Toop Nugget mine, (3) Alice Creek mine, (4) Quesnel Canyon, and (5) Spanish Mountain. Areas newly opened to placer mining are hachured.

Figure 2 Geological Sketch Map of the Cottonwood Area

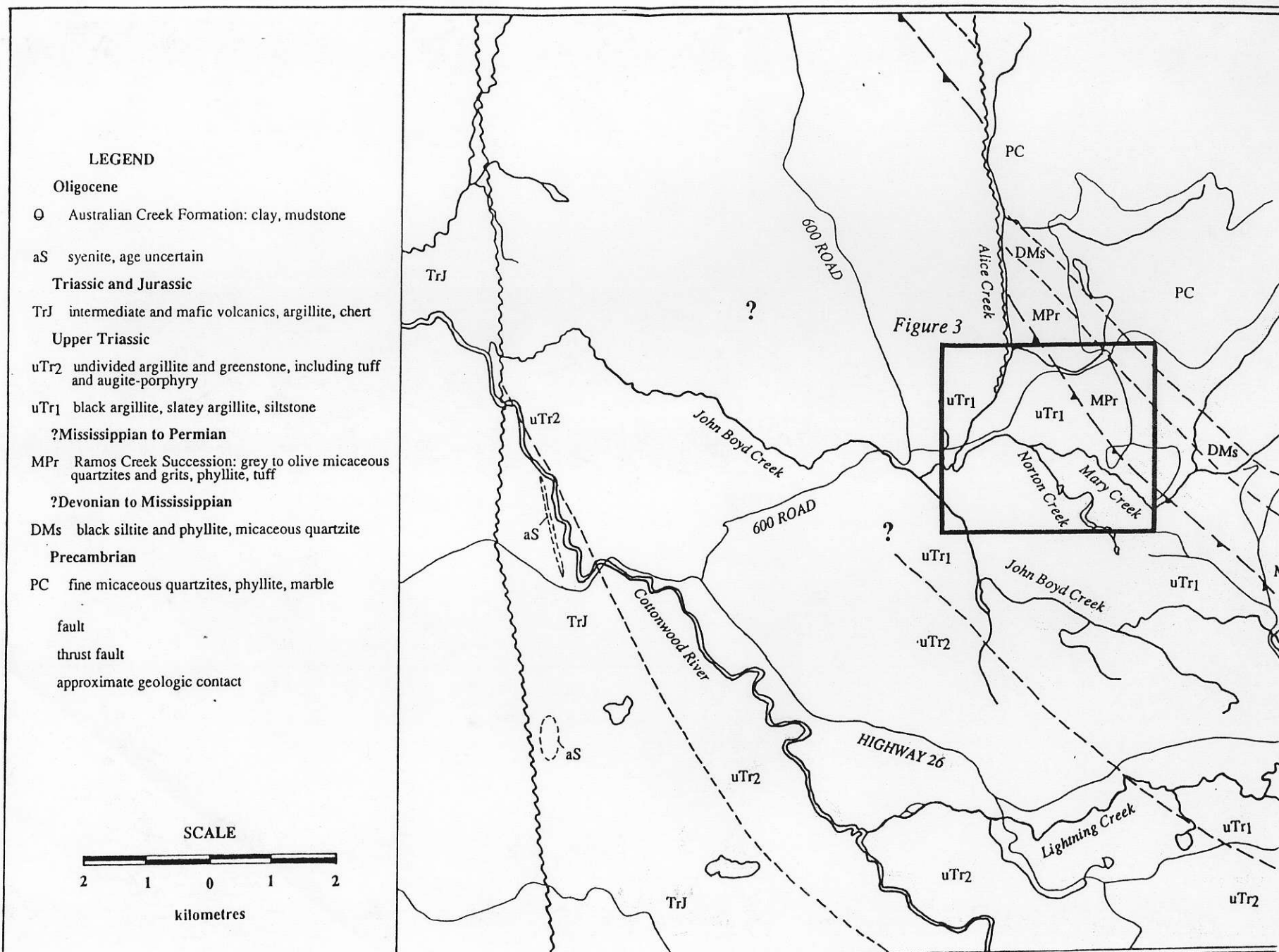
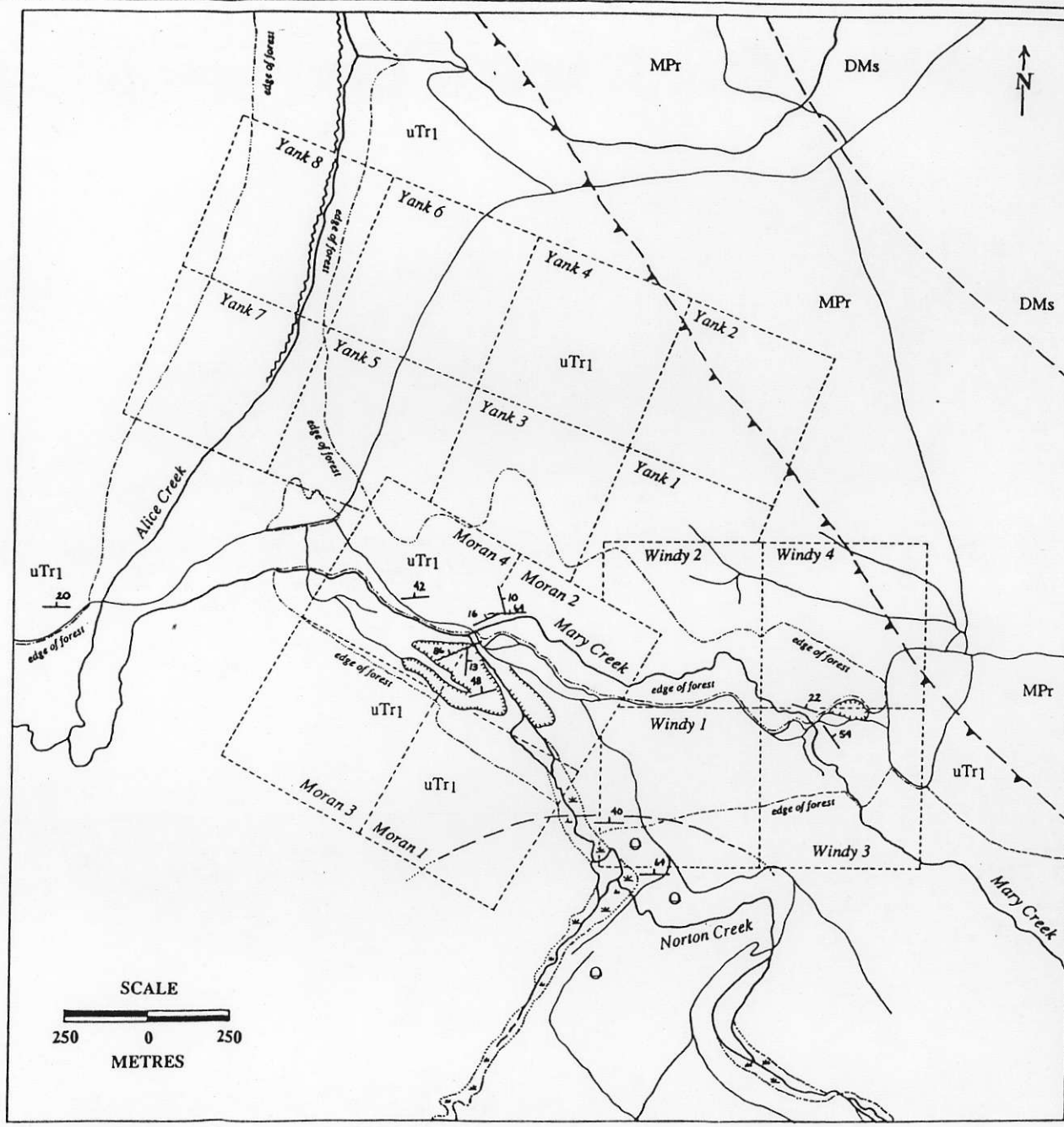
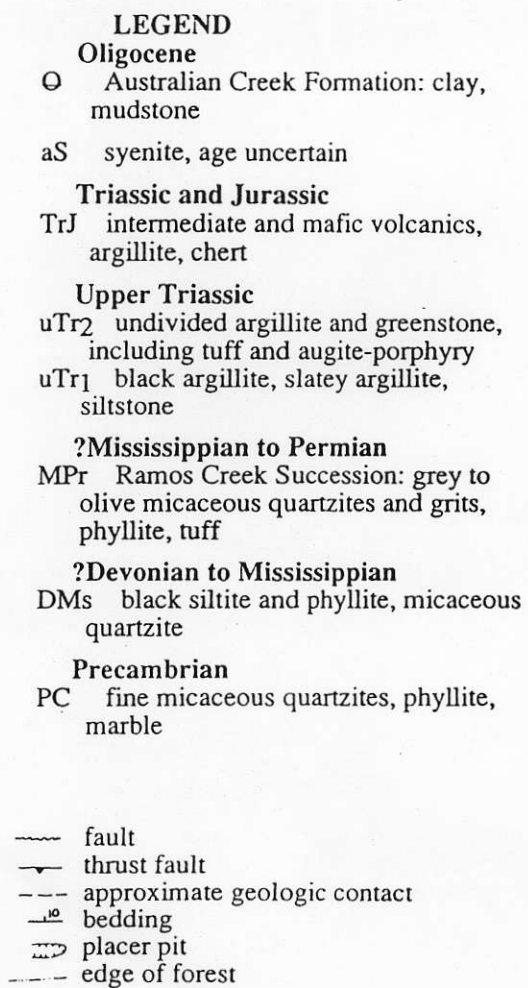


Figure 3 Sketch Map of Mary and Norton Creek Area



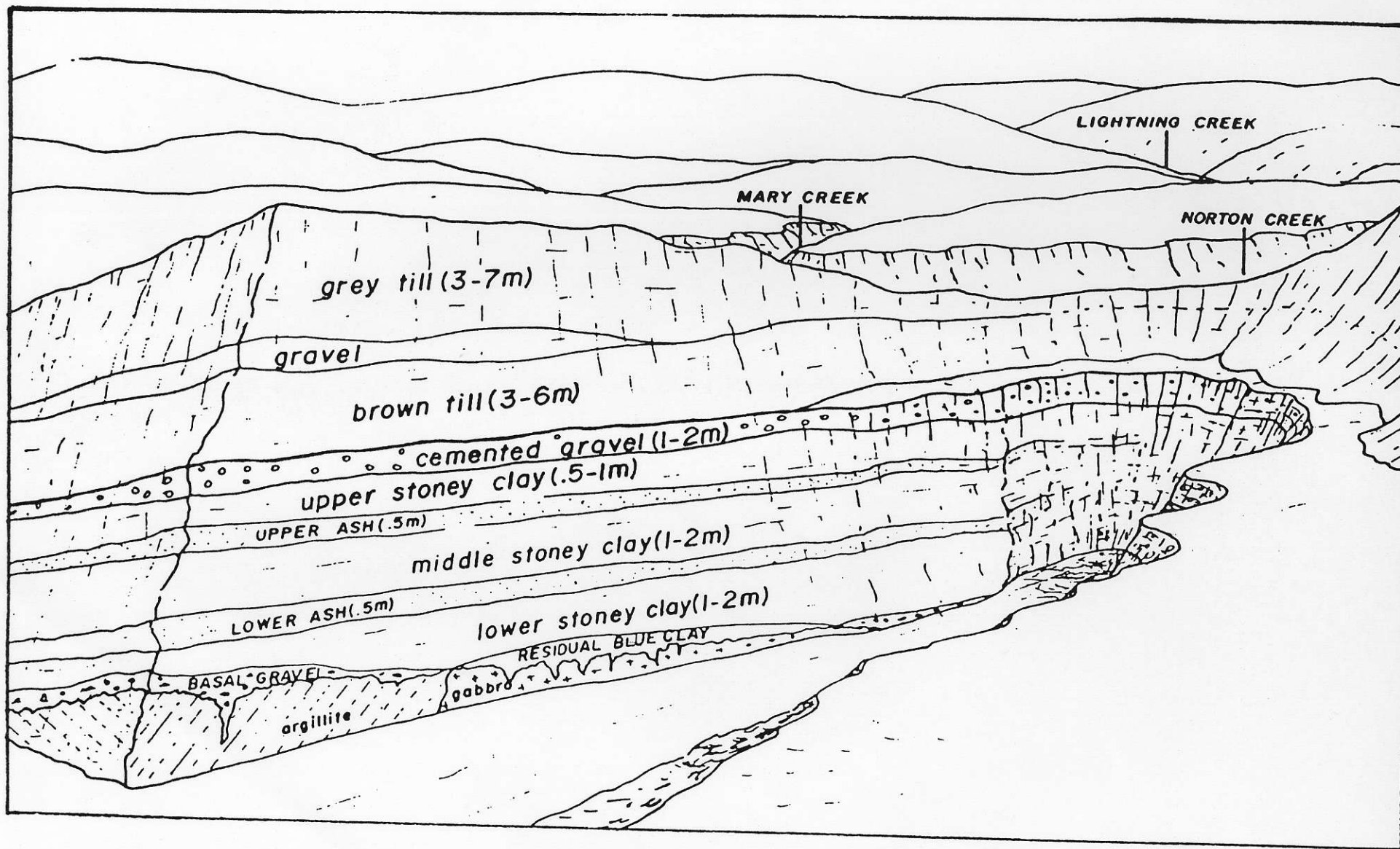
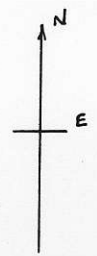
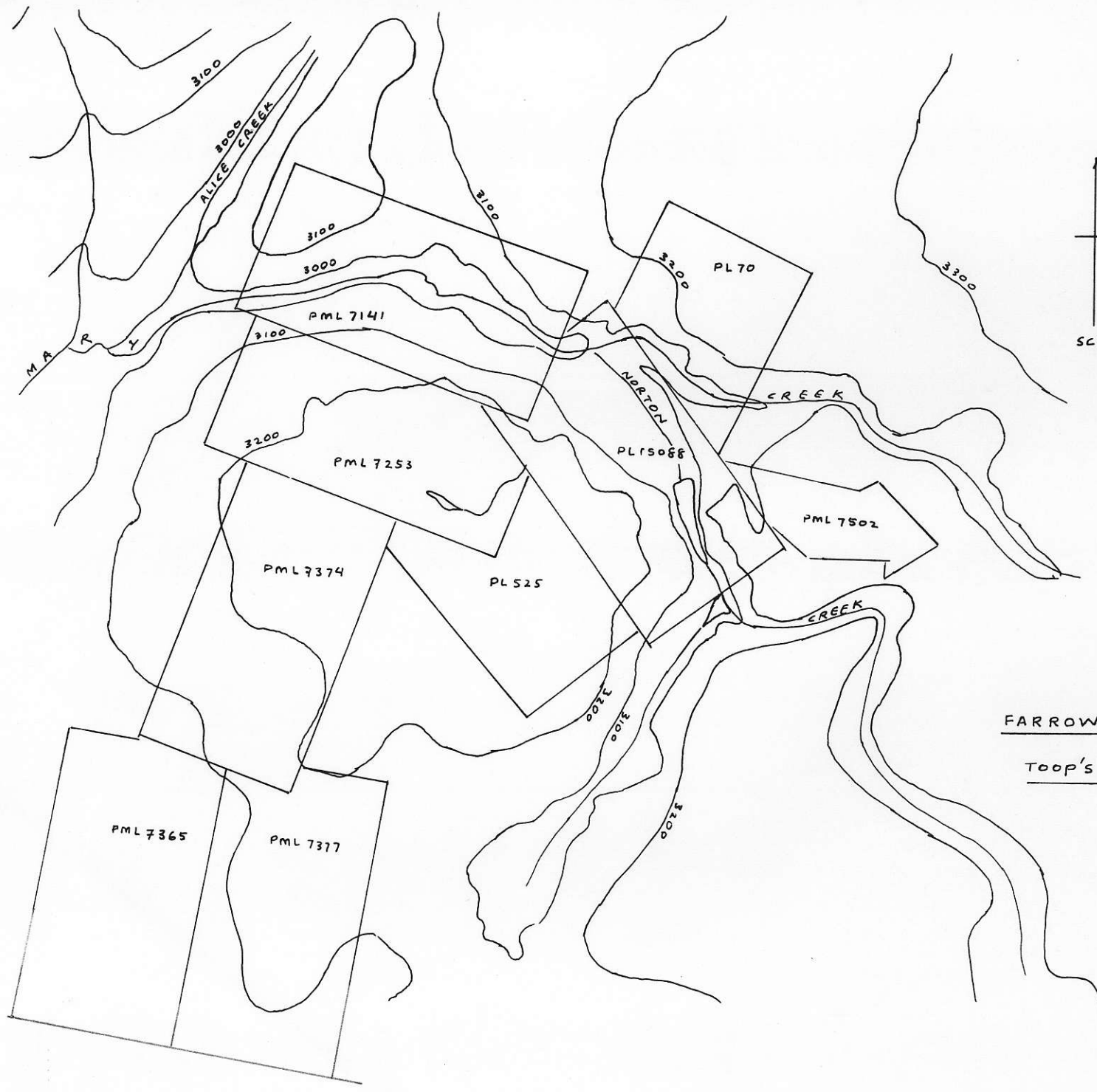


Figure 4 Diagrammatic Section of the Toop Placer Pit,
from Roeds, 1985

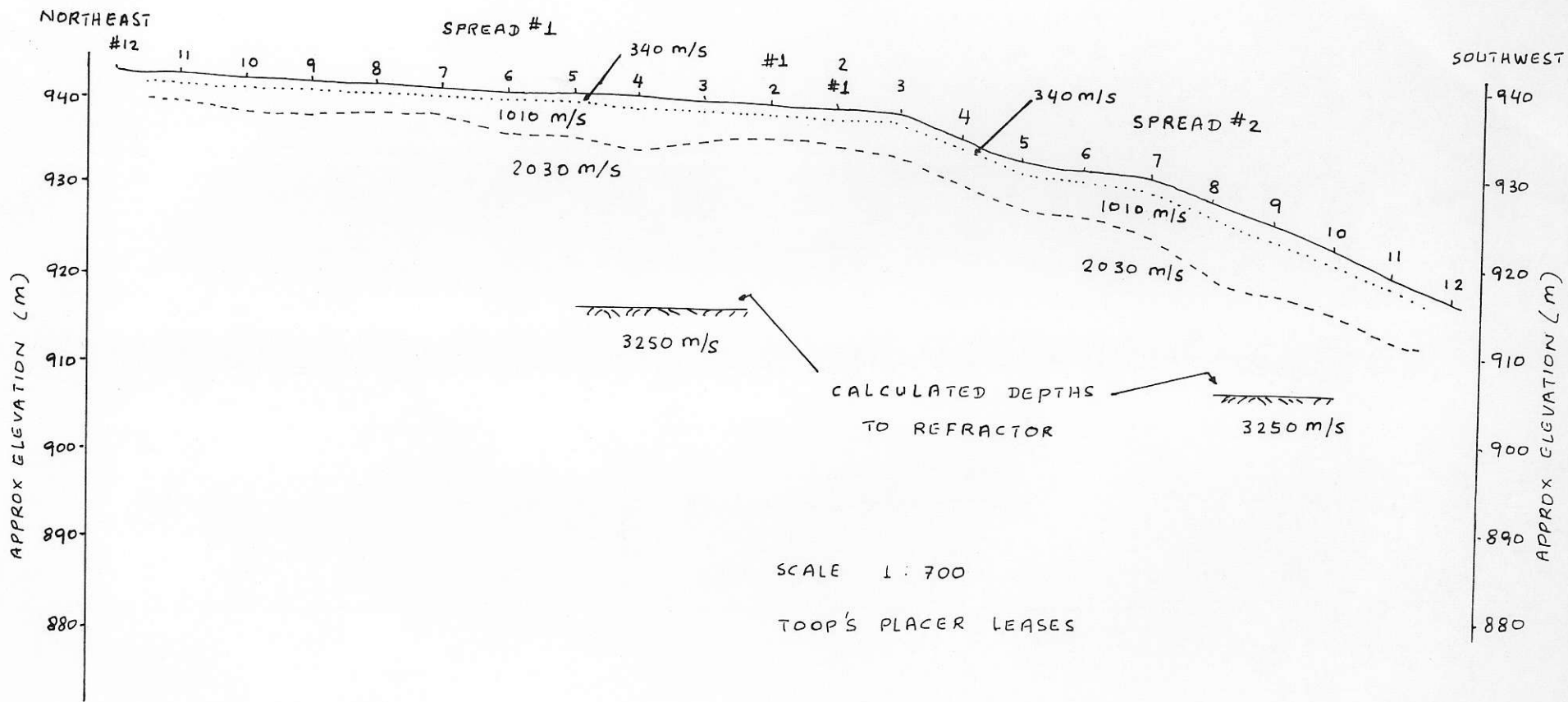


SCALE 1:18000

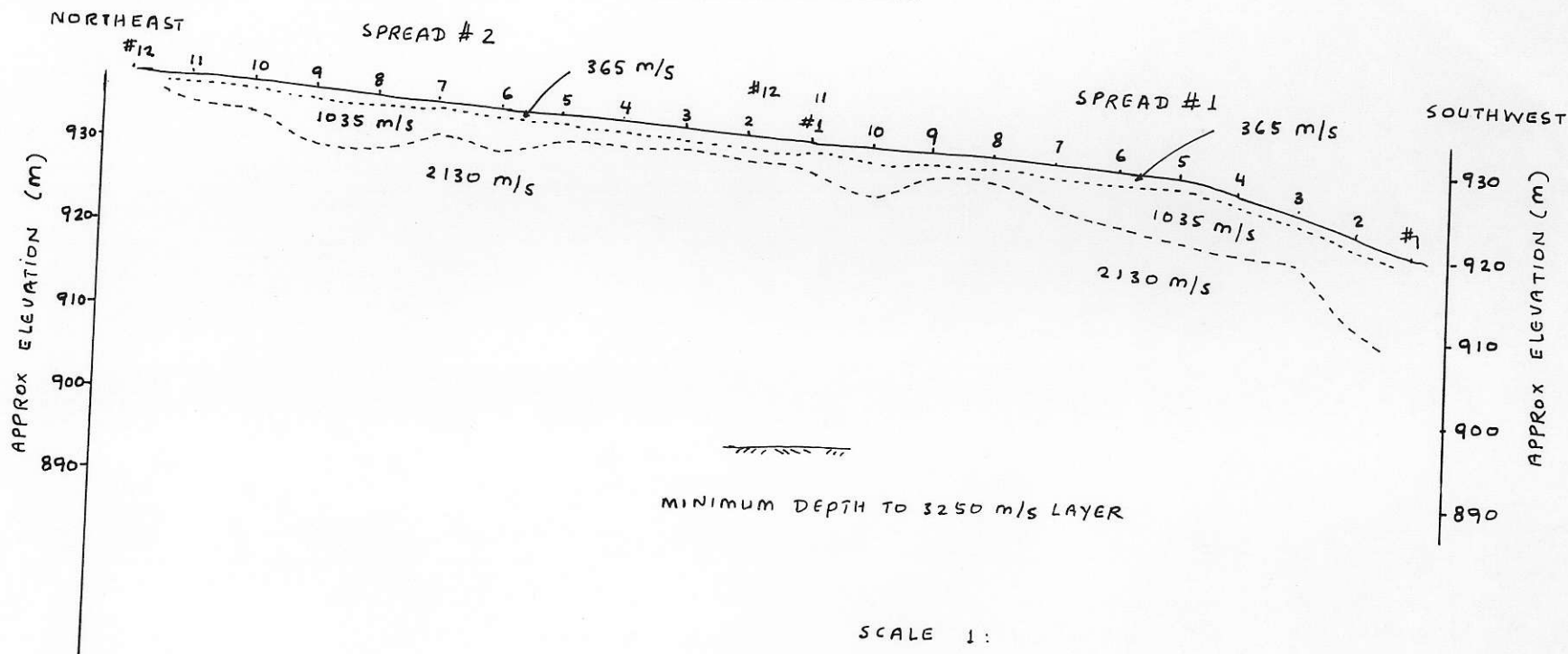
FARROW MIN DEV CORP

TOOP'S PLACER LEASES

SEISMIC LINE 3



SEISMIC LINE 2



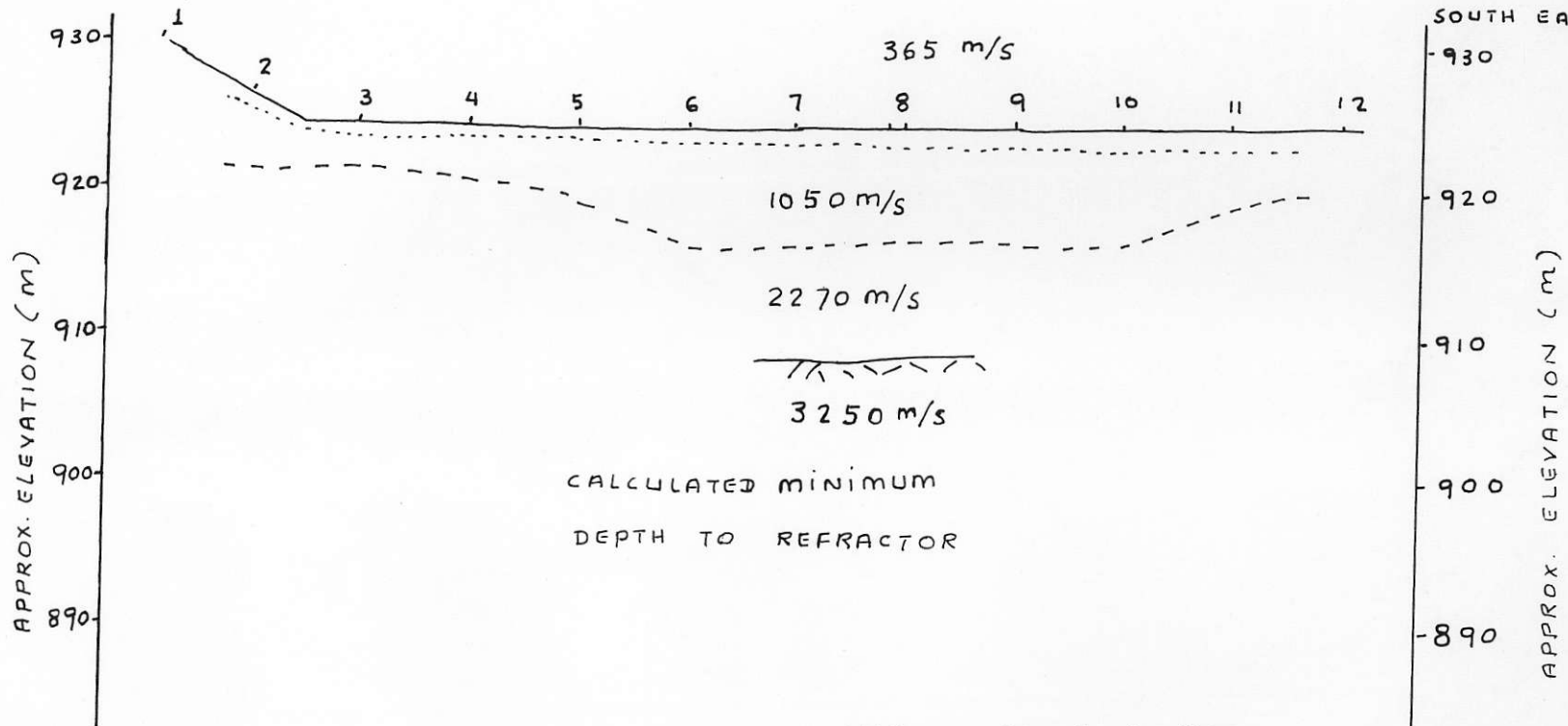
SCALE 1:

TOOP'S PLACER LEASES

SEISMIC LINE 1

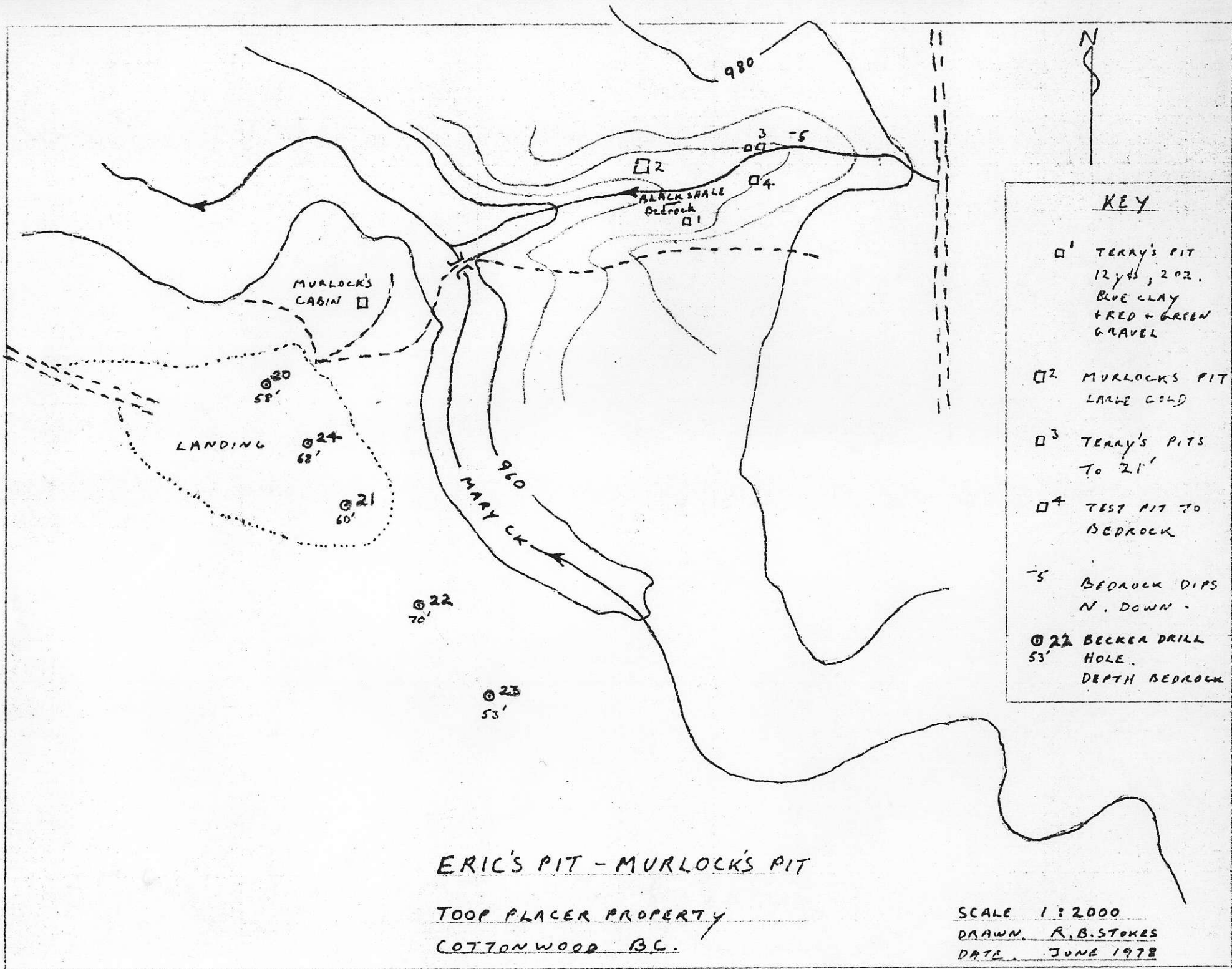
NORTHWEST

SOUTH EAST



NATURAL SCALE 1:500

TOOP'S PLACER LEASES



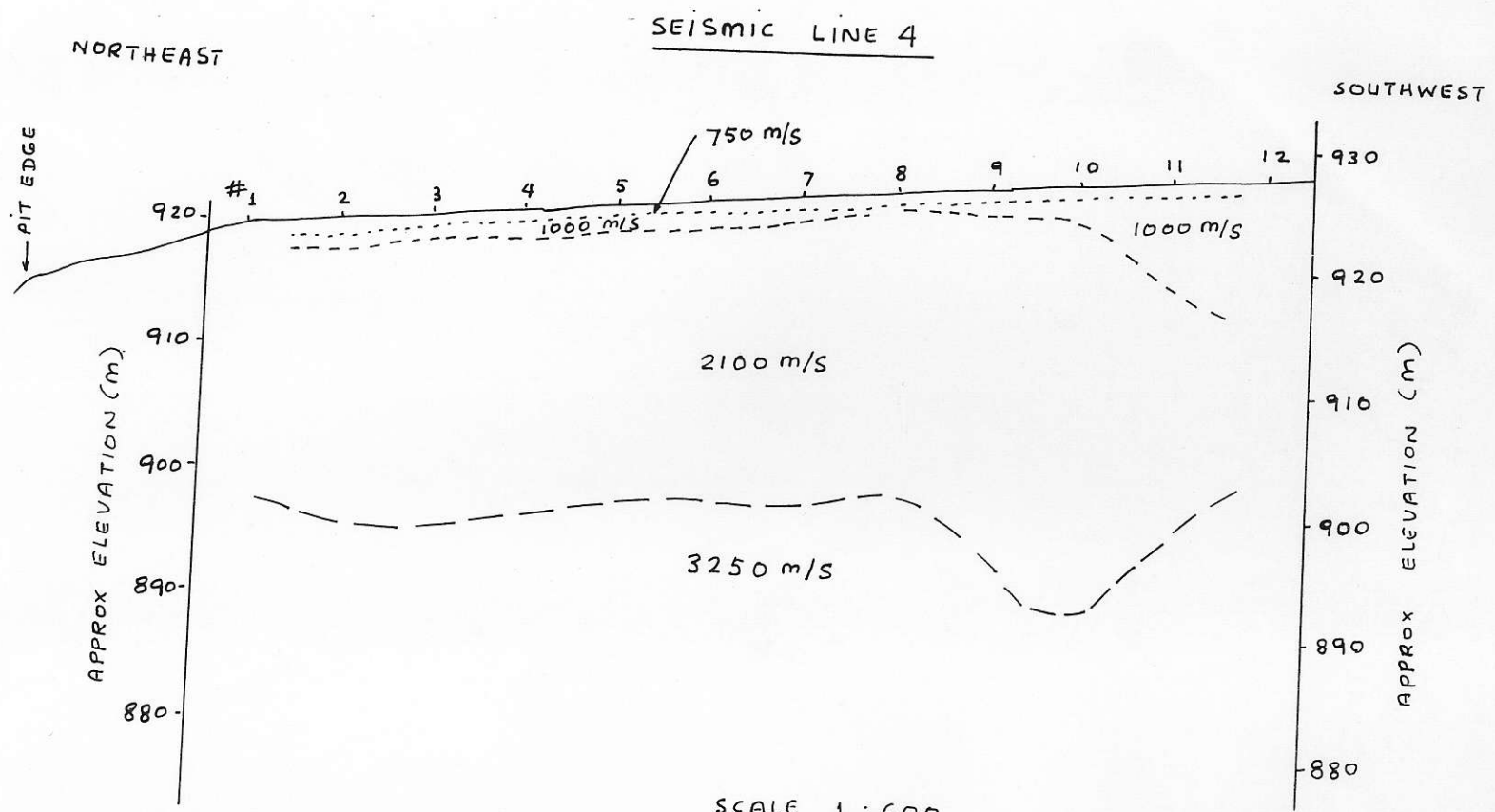
KEY

- ¹ TERRY'S PIT
12 yds, 202.
BLUE CLAY
+ RED + GREEN
GRAVEL
- ² MURLOCK'S PIT
LARGE GOLD
- ³ TERRY'S PITS
TO 21'
- ⁴ TEST PIT TO
BEDROCK
- 5 BEDROCK DIPS
N. DOWN -
- ⊙²⁰ BECKER DRILL
HOLE.
53'
DEPTH BEDROCK

ERIC'S PIT - MURLOCK'S PIT

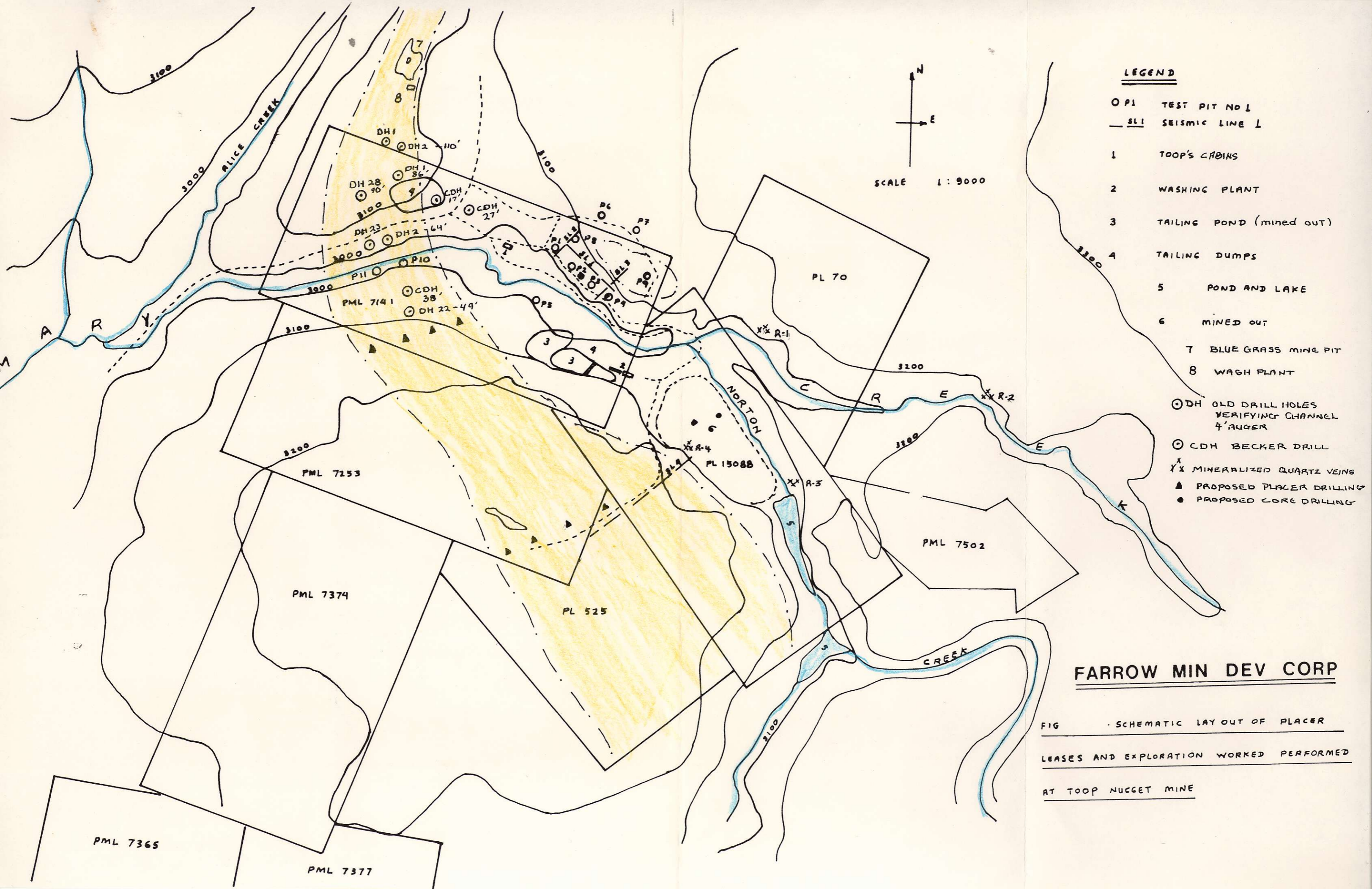
TOOP PLACER PROPERTY
COTTONWOOD, BC.

SCALE 1:2000
DRAWN. R.B. STOKES
DATE. JUNE 1978



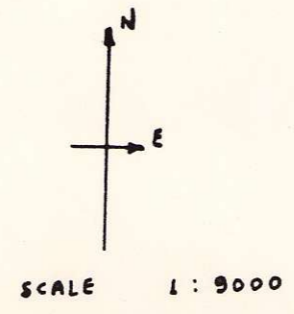
SCALE 1:600

TOOP'S PLACER LEASES



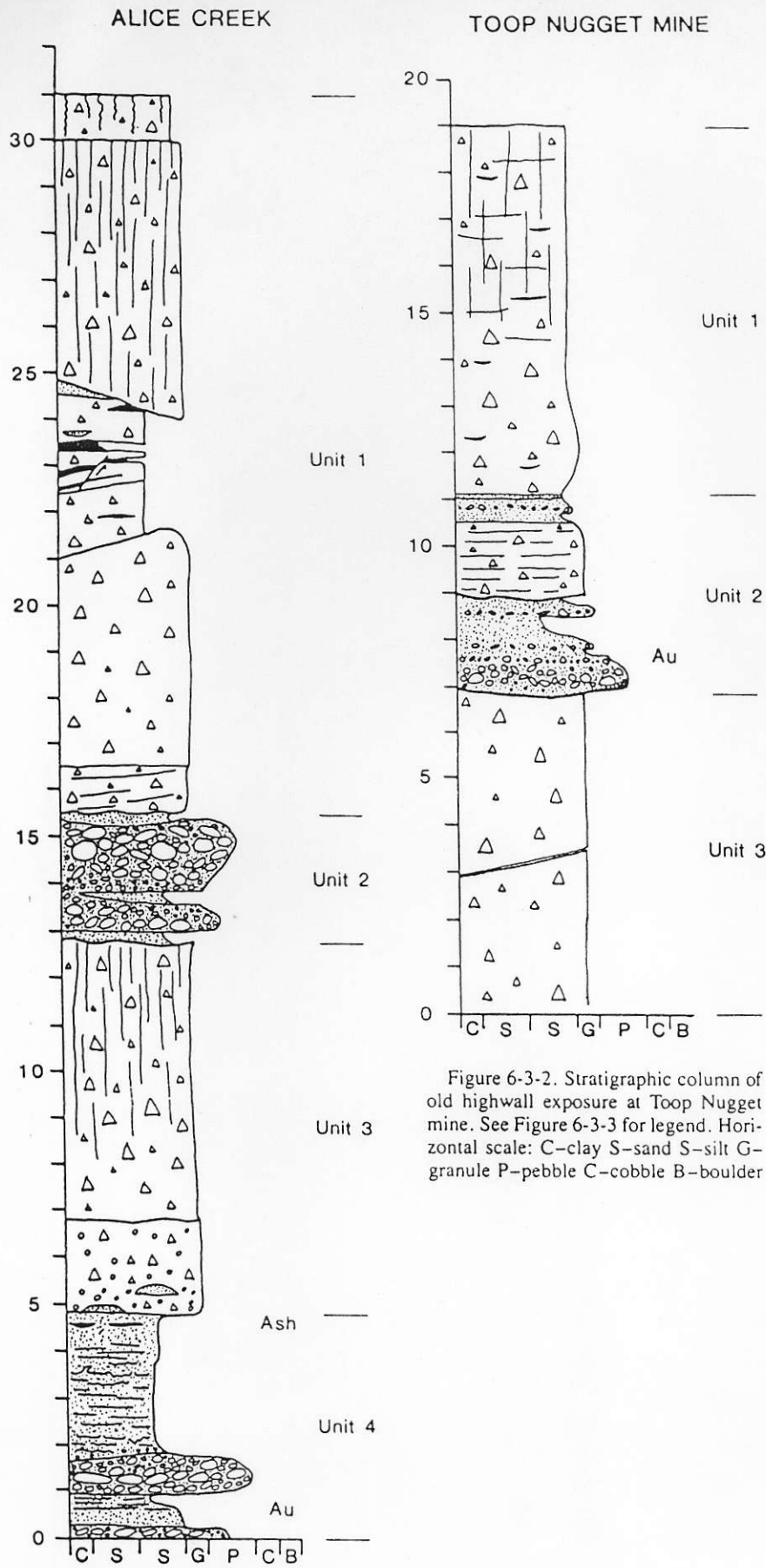
LEGEND

- P1 TEST PIT NO 1
- SL1 SEISMIC LINE 1
- 1 TOOP'S CABINS
- 2 WASHING PLANT
- 3 TAILING POND (MINED OUT)
- 4 TAILING DUMPS
- 5 POND AND LAKE
- 6 MINED OUT
- 7 BLUE GRASS MINE PIT
- 8 WASH PLANT
- ⊙ DH OLD DRILL HOLES
VERIFYING CHANNEL
& AUGER
- ⊙ CDH BECKER DRILL
- X MINERALIZED QUARTZ VEINS
- ▲ PROPOSED PLACER DRILLING
- PROPOSED CORE DRILLING



FARROW MIN DEV CORP

FIG . SCHEMATIC LAY OUT OF PLACER
LEASES AND EXPLORATION WORKED PERFORMED
AT TOOP NUGGET MINE



- Diamicton (Matrix Supported)
- Gravelly Diamicton
- Gravels
- Sandy Gravels
- Sands
- Silts and Clays
- Jointing
- Horizontal Bedding
- Rooting
- Faults (with movement)
- Trough Cross-beds
- Deformation Structures
- Gold Payzones

Figure 6-3-3. Composite stratigraphic column of old highwall exposures at Alice Creek mine.