

671986

BC 2879.90

m

- #1 white to light grey pyritic rhyolite, lithic to vitric tuffs, trachytic diorite
Tuffs contain bedded fragments of granitic ~~fragments~~ textured rock up to
2" long. The whole rock is somewhat porous. — a tuff of diorite composition
and appearance.
- #2 mottled pale greenish gray limy volcanic greywacke — along rd ditch caused
by faults
- #3 med-coarse grain hornblende diorite near fault hornblende is med
chloritic
- #4 Dense f.g reddish to bluish grey siliceous rock, probably a siliceous
tuff. Possibly fine grain variety of diorite.
- ⑤ Problematic — Sub granitic texture, locally trachytic, at times volcanic
texture. Generally medium grained hornblende (diorite) ². Dark grey to
black in colour, pyritic, epidotized. Probably an older intrusive stock.
which has not been unroofed very much.

MINE _____ LOCATION _____ LEVEL _____

GEOLOGY BY _____ SURVEY _____ SCALE _____ DATE _____

B.C. GOVERNMENT AIR PHOTOGRAPH
All Rights Reserved

Date of Exposure:

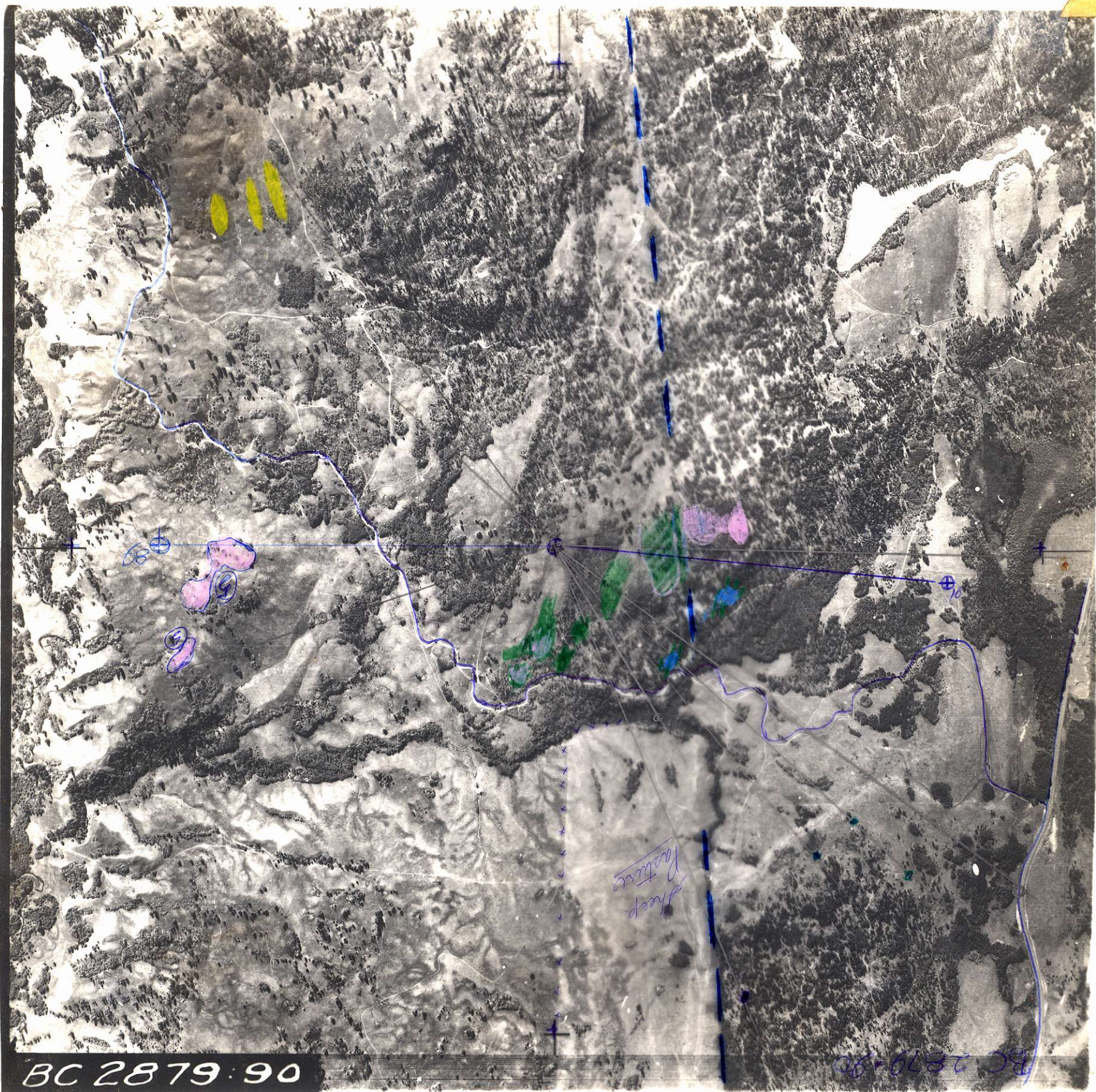
SEP 9 1960

Obtain reprints & tech data from
Air Division
Dept. of LANDS & FORESTS, Victoria, B.C.

NARROW ANGLE

20 CHAINS = 1 INCH

(APPROX)



BC 2879-90

BC 2879-90

NORTH

Sheep
Pasture