

Photo Traverse Kentucky Lake

671969

July 16, 1952

BC 2883-10

① Strongly foliated (N50°E & vertical) probably axial plane cleavage of old axis N50°E probably 85-90°N. Rock type feldspathic to andesitic tuffs and agglomeratic tuffs.

light to dark green coloured generally med to coarse grained exclusive of fragments which are generally around 1-3" ② 505 DN 87 - Considerable epidote, less cleavage cleavage probably in top. low. Small quartz (drusy) on fracture planes with crystalline epidote. Dark green fine to med. grain andesitic breccias

③ Dark brick red f-mg. andesitic breccias. - no apparent structures distinctly bedded N3°E/35E

④ f-mg. dark blackish red tuff. This rock shows practically no signs of alteration. It may be younger than the breccias. See Specimens July 16 #2, Kentucky.

⑤ Jointing N55°E/steep to vertical, andesitic breccias overlain by light green feldspathic tuffs. Topsy hill to east is f.g. med. green andesitic tuff. No alteration strike N-S/dip moderate to East. Becoming epidotized about 200 feet from the logging road BC 2885.44

⑥ Basalt. To the eastern contact the basalt is red weathering mostly amygdaloidal, partly vesicular. Amygdules with zedites and epidote. Further to the west, solid green basalt is a red spotted pyroxene basalt. Red spots due to small 3-5mm gasper-like particles. Pyroxenes are euhedral deep lustrous green, both of which are set in aphanitic purple matrix. Occasional knots of epidote & some large (zedite)? SPECIMEN July 16 #3. Kentucky. Dip Needle DN 77

⑦ Coarse Agglomerate. composed of volcanic fragments - No granitic debris was noted in the unit. In places it is slightly epidotized, otherwise it is not badly altered. weathers to show the fragments prominently. Red weathering. Inclined shaft at Ca. sunk to the east. Very weakly magnet. mineralization along and between fractures over a width of 5 ft. Mostly malachite stems & probably some chalcocite.

Fault along scarp in agglomerate? ± N16°E dip unknown. copper seems to be conc. at intersection of three joint systems.

- ① E-W/000S
 - ② N10°W St E
 - ③ N65E 45°NW
- DN 77

DN = Dip Needle Log

BC 2883-10

BC 2885-44

B.C. GOVERNMENT AIR PHOTOGRAPH
All Rights Reserved

Date of Exposure:

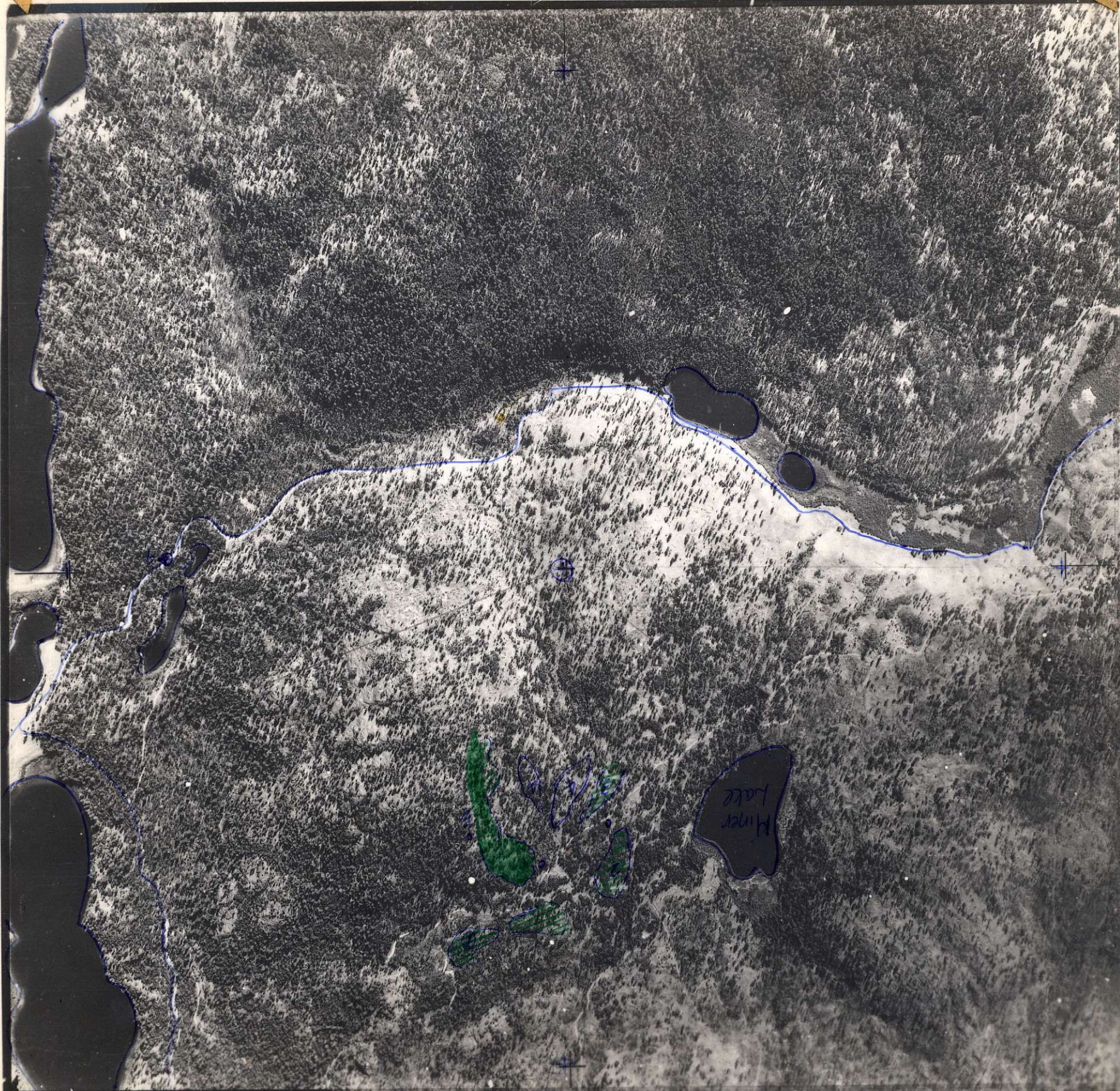
SEP 9 1960

Obtain reprints & tech data from
Air Division
Dept. of LANDS & FORESTS, Victoria, B.C.

NARROW ANGLE

20 CHAINS = 1 INCH

(APPROX)



BC 2883-10

NORTH

BC 2883-10