

671791
BURN

September 2nd, 1971.

BULLETIN

To: The Parties, LUC Syndicate
Conwest - T.L. Horsley
 G.W. Grant
Dome - J.B. Redpath
Redwater - H.W. Maech

In August the LUC Syndicate made a significant discovery at 125°12' W. Long., 55°32' N. Lat. (See Manson River map accompanying Second Quarter report.)

The 70 claim Burn group has been staked following the discovery of a small (?) granite plug containing pyrite and some molybdenite; subsequent reconnaissance soil sampling at 400 ft. intervals on tape and compass lines (generally 400 ft. apart) outlined an area approximately 5000' x 8500' in which strongly anomalous molybdenum and copper (lesser) values were obtained.

The claim area is on the west side of a well wooded valley with average slopes of about 15 degrees. The prospect is only 6 miles south of the Kwanika Creek road and, hence, is comparatively accessible.

Outcrop is sparse and none has been found in the main part of the anomalous area.

A linecutting crew is expected to arrive on the Burn group Monday, September 6th. They will cut 20 miles of line as control for geological mapping and a magnetometer survey.

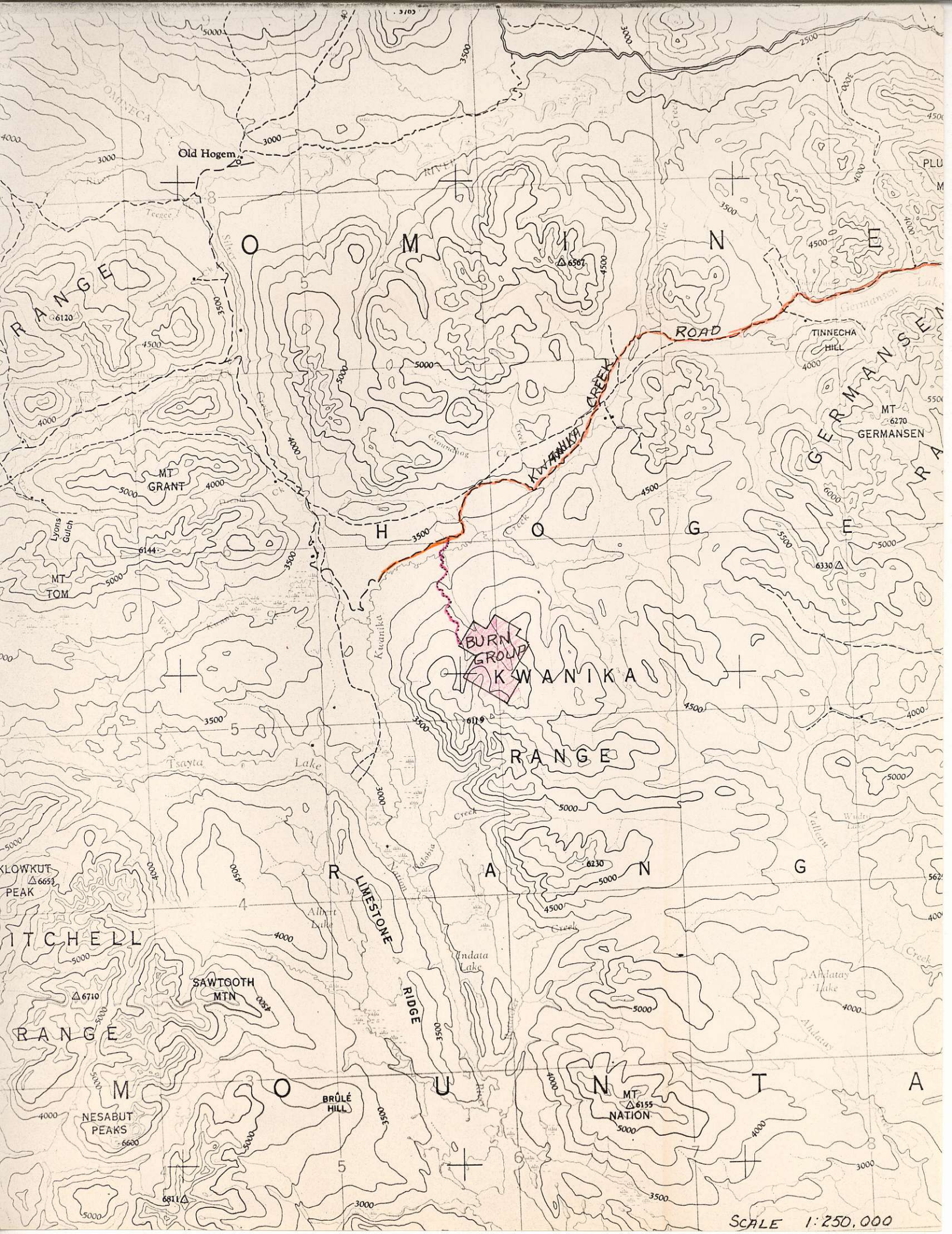
The situation has been discussed with Mr. Redpath and Dr. Watson of Dome Mines. Mineralized specimens were shown them.

An application has been made verbally to the Deputy Minister of Mines for a road grant of \$10,000 to build a road into the property. The Deputy Minister was most cooperative.

A horseback calculation indicates that about \$30,000 of the 1971 Budget remains and this would normally be sufficient to complete the year's program. A proposal for work on Specific Project Burn is in the works.

W.R. Bacon,
Manager, LUC Syndicate

WRB/ic



SCALE 1:250,000