

# ONE RESOURCES CANADA CORP.

MINERAL - OIL - AND GAS PROPERTIES OF CANADA  
MANAGEMENT - DEVELOPMENT - JOINT VENTURE - STAKING  
CASH BUYERS OF PLACER GOLD & CONCENTRATES

PHONE - (604) 669-4002

MEZZANINE FLOOR 448 SEYMOUR STREET VANCOUVER B.C. V6B 3H4

## MINERAL PROPERTY

### MINERAL PROPERTY DESCRIPTION

NAME: **STAR NO. 2**

LOT # **6348**

MINING DISTRICT: **SKEENA**

LAND DISTRICT: **COAST RANGE 5**

AREA IN HECTARES: **29.84**

AREA IN ACRES: **51.47**

MINERALS PRESENT: **FE-CU-AG-AU**

MAP # **193.1.1.1.4**

DUE DATE: **NOVEMBER 15, 1986**

TYPE OF ACCESS: **WATER**

CLAIM STATUS: SURVEYED (xx) STAKED ( )

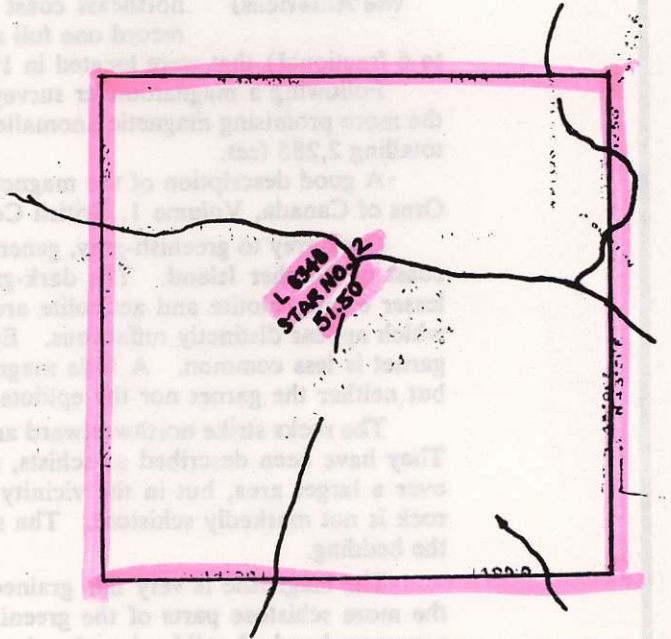
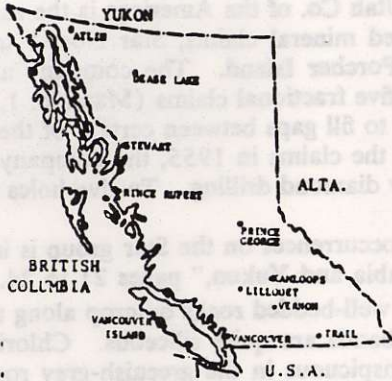
HISTORY OF PROPERTY INCLUDED IN REPORT: YES (xx) NO ( )

PAST ASSAY RESULTS: At least several hundred thousand tons of ore

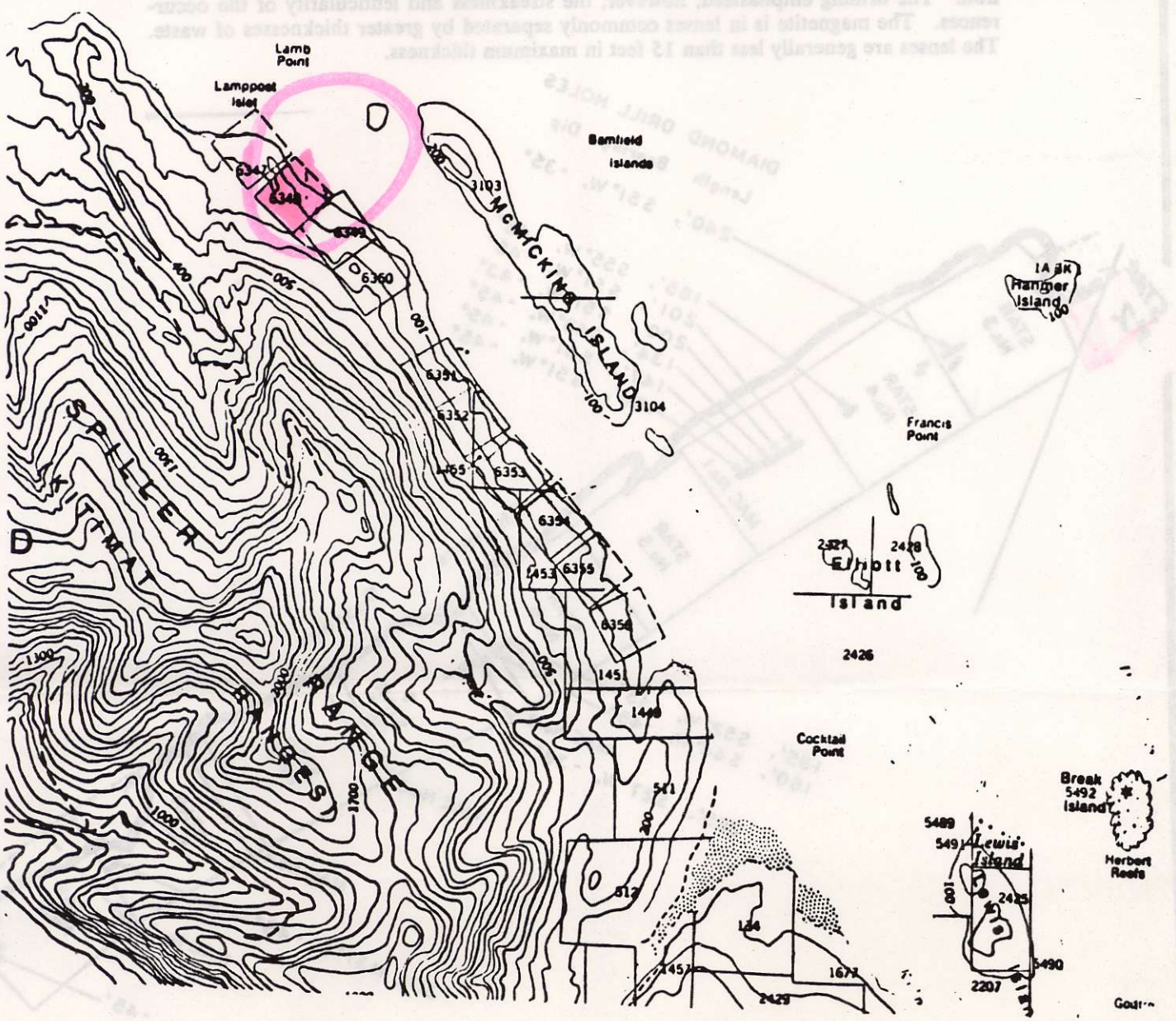
GOLD COMMISSIONER'S FILE - RECORD # **5035**

DATE PROPERTY FIRST CROWN GRANTED OR STAKED: **June 1936**

NEAREST TOWN: **PRINCE RUPERT** APPROX. DISTANCE: **17 miles**



TOTAL PRICE OF PROPERTY: .....





# ONE RESOURCES CANADA CORP.

MINERAL - OIL - AND GAS PROPERTIES OF CANADA  
 MANAGEMENT - DEVELOPMENT - JOINT VENTURE - STAKING  
 CASH BUYERS OF PLACER GOLD & CONCENTRATES

PHONE - (604) 669-4002

MEZZANINE FLOOR 448 SEYMOUR STREET VANCOUVER B.C. V6B 3H4

## LODE METALS

129

### Porcher Island

(54° 130' S.E.) Utah Co. of the Americas is the assessed owner of ten Crown-granted mineral claims, Star Nos. 1 to 10, on the northeast coast of Porcher Island. The company also holds by record one full and five fractional claims (Mac No. 1, Mac Nos. 2 to 6 fractional) that were located in 1955 to fill gaps between certain of the Star claims.

Following a magnetometer survey of the claims in 1955, the company investigated the more promising magnetic anomalies by diamond drilling. Twelve holes were drilled, totalling 2,285 feet.

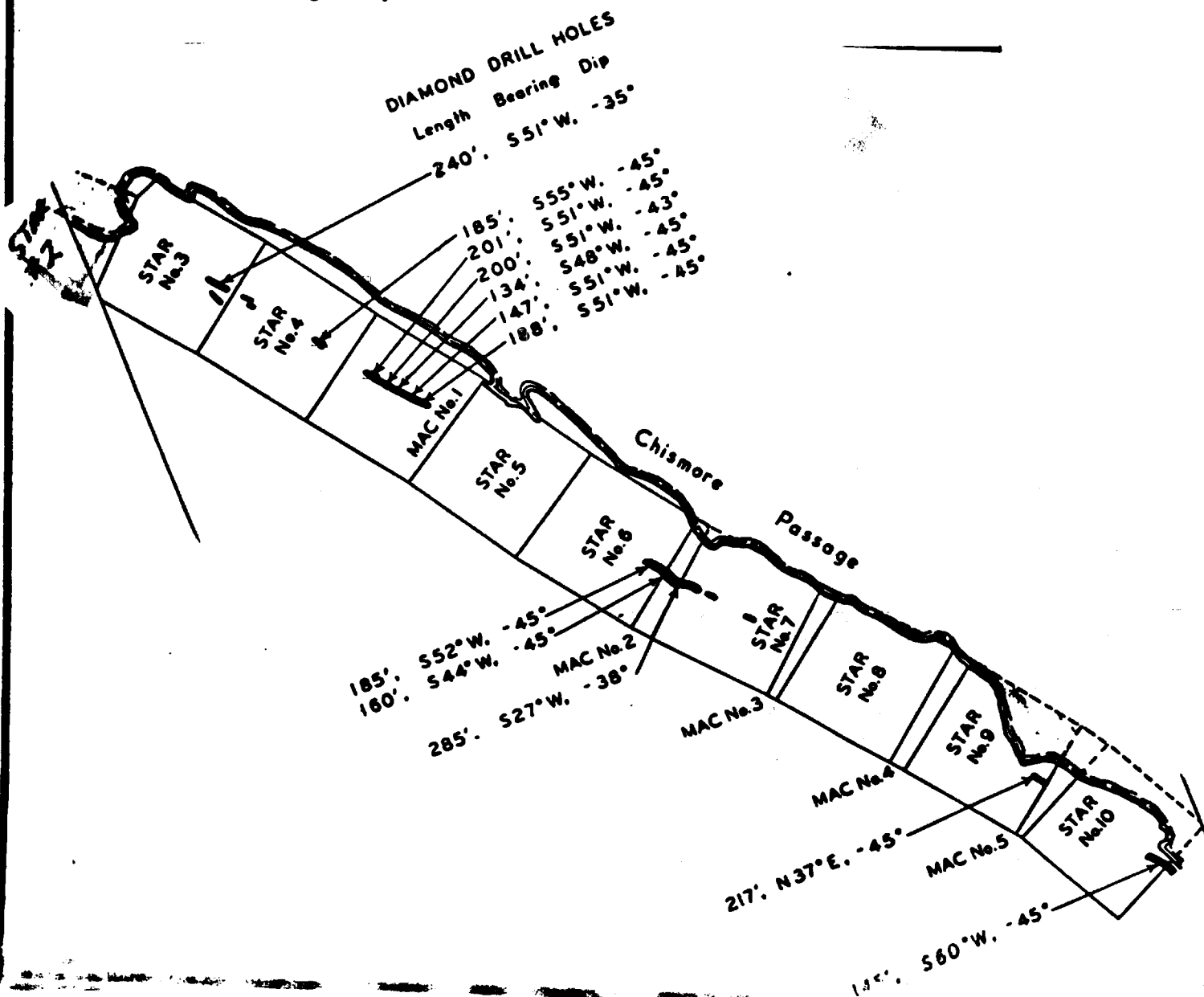
A good description of the magnetite occurrences on the Star group is in "The Iron Ores of Canada, Volume 1, British Columbia and Yukon," pages 21 to 24.

Dark-grey to greenish-grey, generally well-bedded rocks outcrop along the northeast coast of Porcher Island. The dark-grey bands are quite siliceous. Chlorite and, to a lesser extent, biotite and actinolite are conspicuous in the greenish-grey rocks, some of which appear distinctly tuffaceous. Epidote is common and in places abundant; brown garnet is less common. A little magnetite was noted in veinlets in the massive garnet, but neither the garnet nor the epidote is closely associated with the magnetite deposits.

The rocks strike northwestward and dip northeastward at angles of 60 to 70 degrees. They have been described as schists, and undoubtedly this term is generally applicable over a larger area, but in the vicinity of the deposits an appreciable percentage of the rock is not markedly schistose. The schistosity, when present, is essentially parallel to the bedding.

The magnetite is very fine grained. It occurs in conformable streaks and lenses in the more schistose parts of the greenish-grey rocks. In a very few places it occurs as a narrow band of solid mineral. A minor amount of fine pyrite is commonly present in the better-mineralized areas. Minute amounts of chalcopyrite were noted.

The locations of the magnetite-bearing zones investigated by diamond drilling are shown in Figure 12. The drilling indicated, to a depth of 150 feet, at least several hundred thousand tons of magnetite-bearing rock with a grade of the order of 35 per cent iron. The drilling emphasized, however, the streakiness and lenticularity of the occurrences. The magnetite is in lenses commonly separated by greater thicknesses of waste. The lenses are generally less than 15 feet in maximum thickness.





# ONE RESOURCES CANADA CORP.

MINERAL - OIL - AND GAS PROPERTIES OF CANADA  
 MANAGEMENT - DEVELOPMENT - JOINT VENTURE - STAKING  
 CASH BUYERS OF PLACER GOLD & CONCENTRATES

PHONE - (604) 669-4002

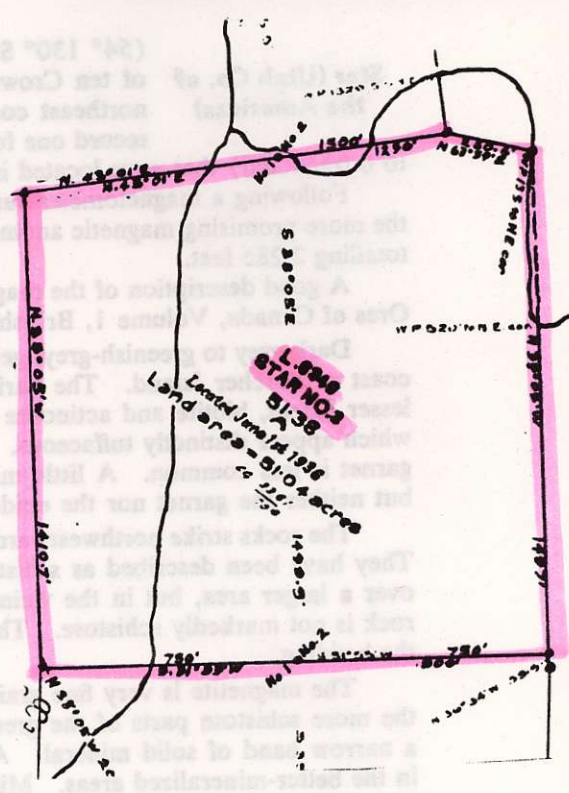
MEZZANINE FLOOR 448 SEYMOUR STREET VANCOUVER B.C. V6B 3H4

62

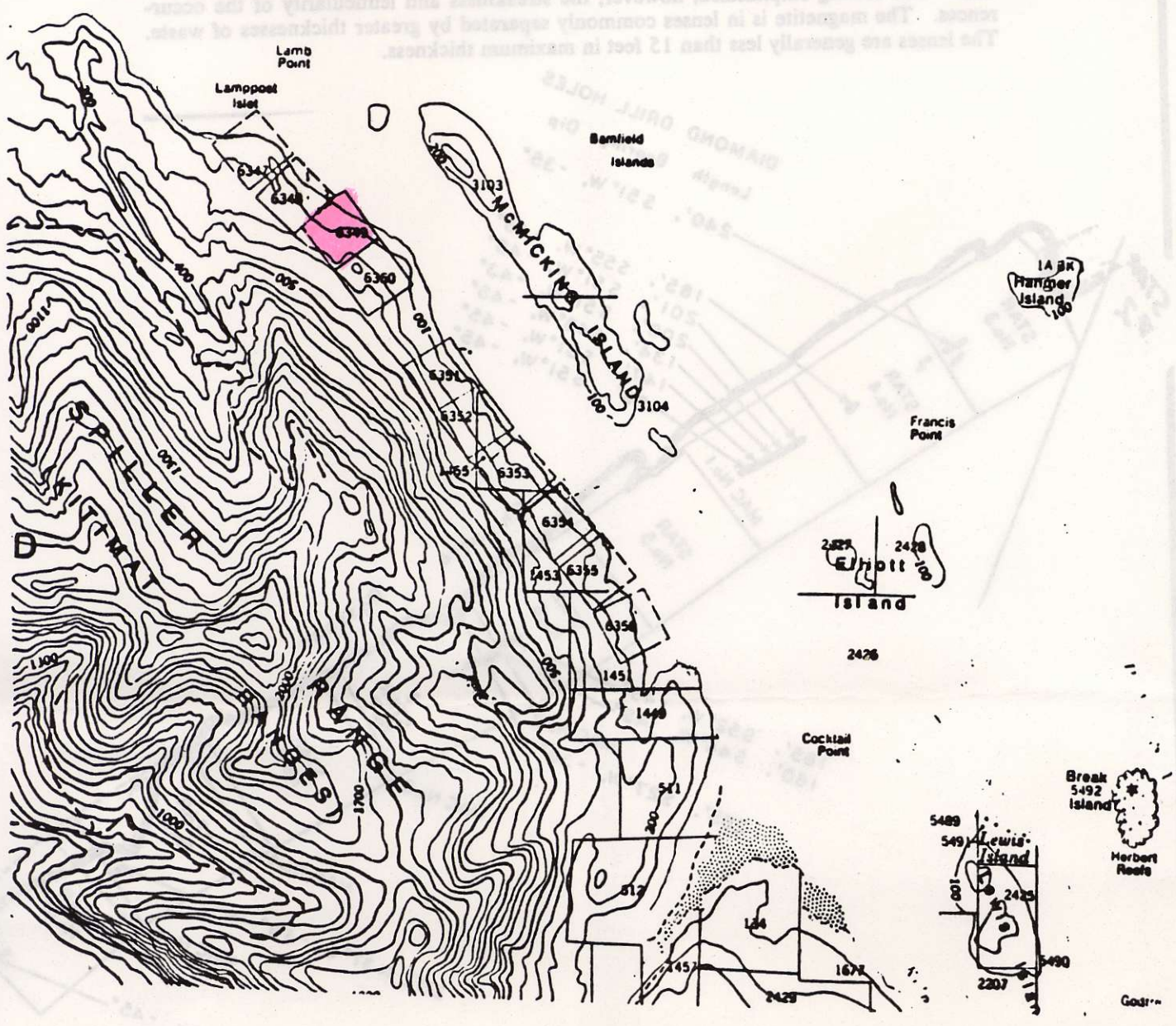
## MINERAL PROPERTY

### MINERAL PROPERTY DESCRIPTION

NAME: .. STAR NO. 3 ..  
 LOT # ..... 6349 .....  
 MINING DISTRICT: SKEENA  
 LAND DISTRICT: .. COAST RANGE 5 ..  
 AREA IN HECTARES: ... 20,80 .....  
 AREA IN ACRES: .. 51,38 .....  
 MINERALS PRESENT: FE-CU-AG-AU  
 MAP # ..... 103 J / 1 W .....  
 DUE DATE: .. November 15, 1986 ..  
 TYPE OF ACCESS: .. WATER ..  
 CLAIM STATUS: SURVEYED (x) STAKED ( )  
 HISTORY OF PROPERTY INCLUDED IN REPORT: YES (x) NO ( )  
 PAST ASSAY RESULTS: At least several hundred thousand tons of ore  
 GOLD COMMISSIONER'S FILE - RECORD # ..... 5036 .....  
 DATE PROPERTY FIRST CROWN GRANTED OR STAKED: June 1936  
 NEAREST TOWN: .. PRINCE RUPERT .. APPROX. DISTANCE: .. 17 miles ..



TOTAL PRICE OF PROPERTY: .....





# ONE RESOURCES CANADA CORP.

MINERAL - OIL - AND GAS PROPERTIES OF CANADA  
 MANAGEMENT - DEVELOPMENT - JOINT VENTURE - STAKING  
 CASH BUYERS OF PLACER GOLD & CONCENTRATES

PHONE - (604) 669-4002

MEZZANINE FLOOR 448 SEYMOUR STREET VANCOUVER B.C. V6B 3H4

## LODE METALS

129

### Porcher Island

(54° 130' S.E.) Utah Co. of the Americas is the assessed owner of ten Crown-granted mineral claims, Star Nos. 1 to 10, on the northeast coast of Porcher Island. The company also holds by record one full and five fractional claims (Mac No. 1, Mac Nos. 2 to 6 fractional) that were located in 1955 to fill gaps between certain of the Star claims. Following a magnetometer survey of the claims in 1955, the company investigated the more promising magnetic anomalies by diamond drilling. Twelve holes were drilled, totalling 2,285 feet.

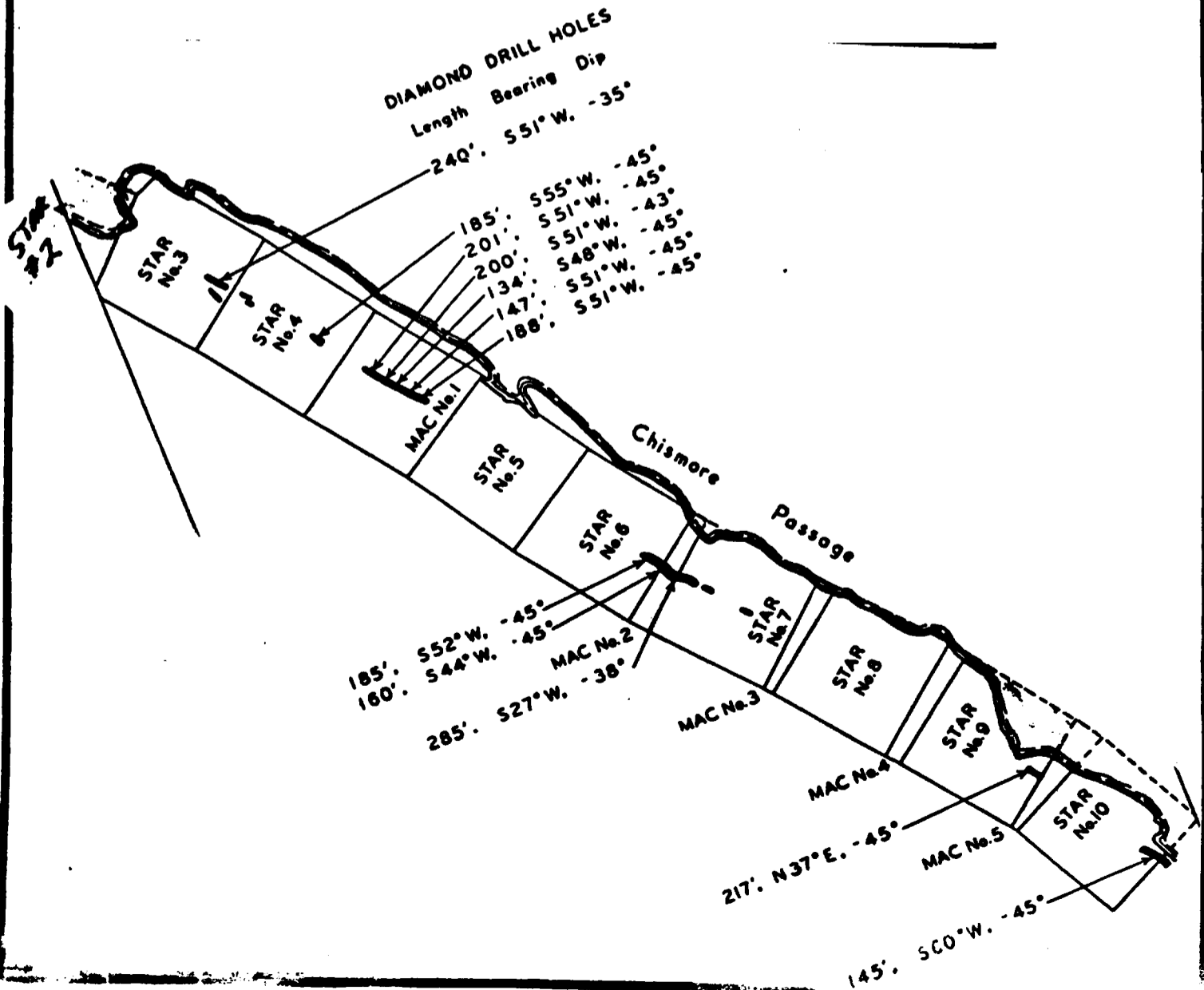
A good description of the magnetite occurrences on the Star group is in "The Iron Ores of Canada, Volume 1, British Columbia and Yukon," pages 21 to 24.

Dark-grey to greenish-grey, generally well-bedded rocks outcrop along the northeast coast of Porcher Island. The dark-grey bands are quite siliceous. Chlorite and, to a lesser extent, biotite and actinolite are conspicuous in the greenish-grey rocks, some of which appear distinctly tuffaceous. Epidote is common and in places abundant; brown garnet is less common. A little magnetite was noted in veinlets in the massive garnet, but neither the garnet nor the epidote is closely associated with the magnetite deposits.

The rocks strike northwestward and dip northeastward at angles of 60 to 70 degrees. They have been described as schists, and undoubtedly this term is generally applicable over a larger area, but in the vicinity of the deposits an appreciable percentage of the rock is not markedly schistose. The schistosity, where present, is essentially parallel to the bedding.

The magnetite is very fine grained. It occurs in conformable streaks and lenses in the more schistose parts of the greenish-grey rocks. In a very few places it occurs as a narrow band of solid mineral. A minor amount of fine pyrite is commonly present in the better-mineralized areas. Minute amounts of chalcopyrite were noted.

The locations of the magnetite-bearing zones investigated by diamond drilling are shown in Figure 12. The drilling indicated, to a depth of 150 feet, at least several hundred thousand tons of magnetite-bearing rock with a grade of the order of 35 per cent iron. The drilling emphasized, however, the streakiness and lenticularity of the occurrences. The magnetite is in lenses commonly separated by greater thicknesses of waste. The lenses are generally less than 15 feet in maximum thickness.





# ONE RESOURCES CANADA CORP.

MINERAL - OIL - AND GAS PROPERTIES OF CANADA  
 MANAGEMENT - DEVELOPMENT - JOINT VENTURE - STAKING  
 CASH BUYERS OF PLACER GOLD & CONCENTRATES

PHONE - (604) 669-4002

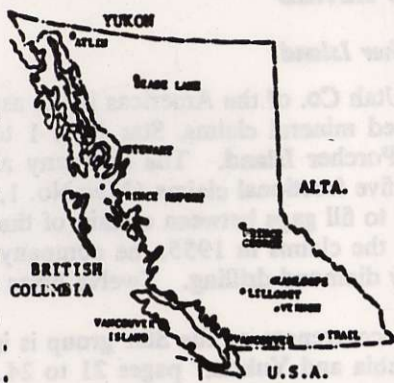
MEZZANINE FLOOR 448 SEYMOUR STREET VANCOUVER B.C. V6B 3H4

63

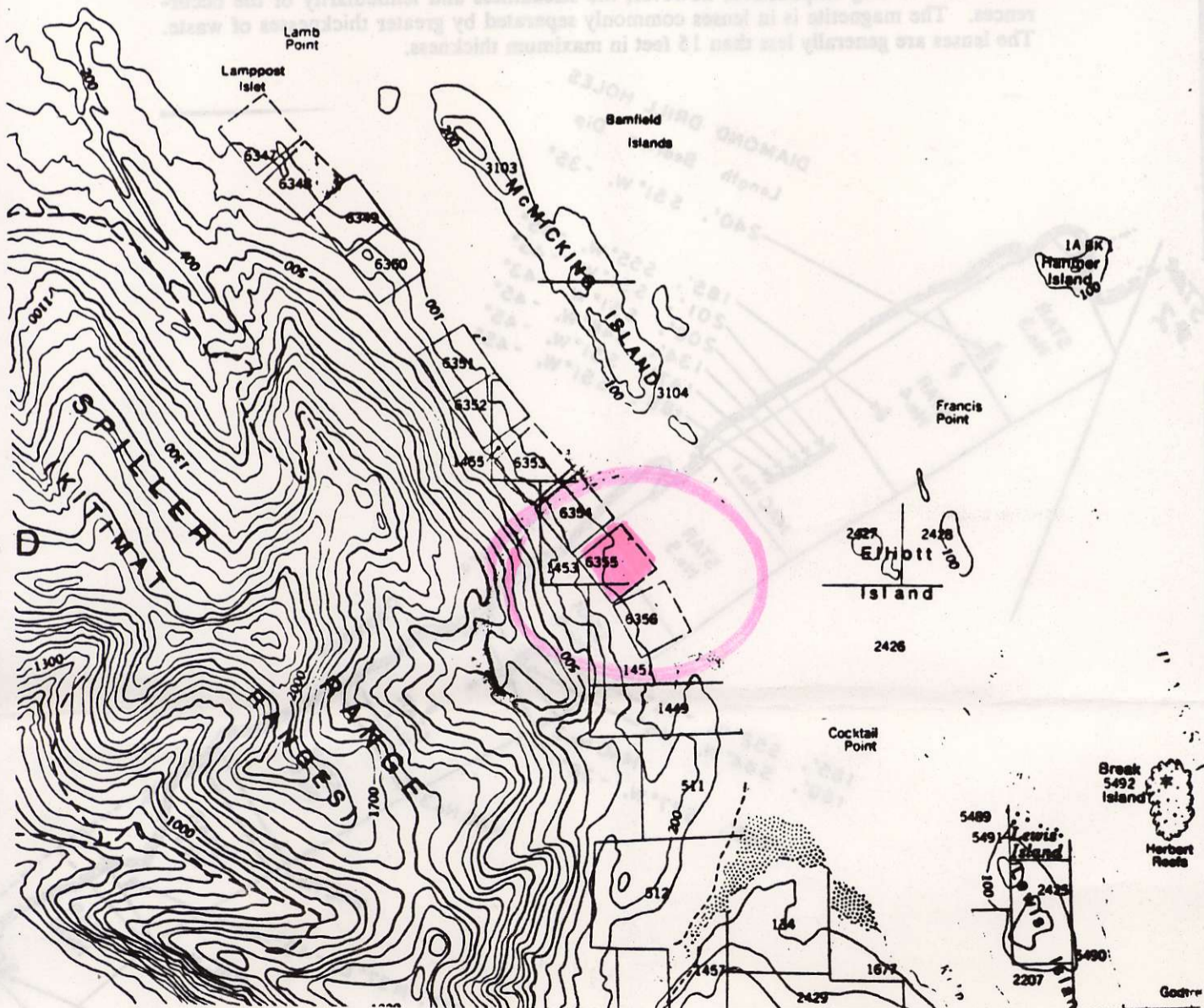
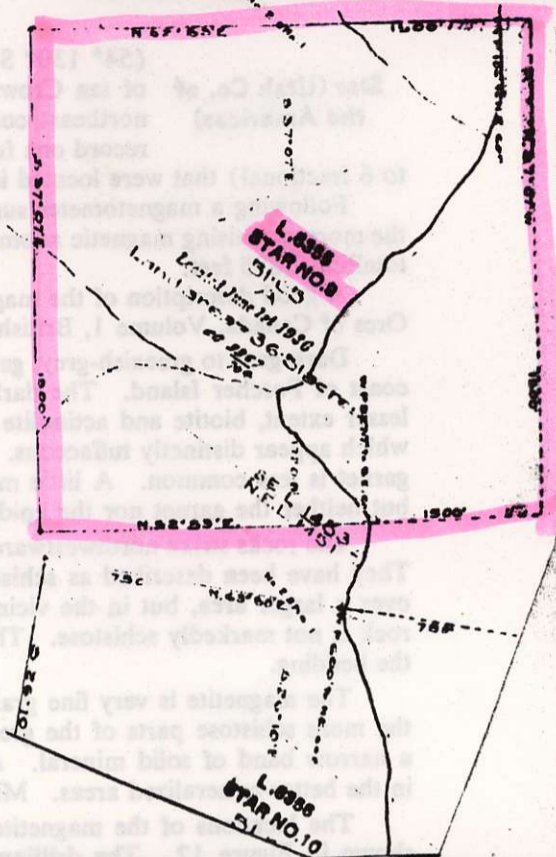
## MINERAL PROPERTY DESCRIPTION

NAME: **STAR 09**  
 LOT # **6355**  
 MINING DISTRICT: **SKEENA**  
 LAND DISTRICT: **COAST RANGE 5**  
 AREA IN HECTARES: **20.20**  
 AREA IN ACRES: **51.45**  
 MINERALS PRESENT: **FE-CU-AG-AU**  
 MAP # **1037/10**  
 DUE DATE: **NOVEMBER 15, 1984**  
 TYPE OF ACCESS: **WATER**  
 CLAIM STATUS: SURVEYED (XX) STAKED ( )  
 HISTORY OF PROPERTY INCLUDED IN REPORT: YES (XX) NO ( )  
 PAST ASSAY RESULTS: *At least several hundred thousand tons of ore*  
 GOLD COMMISSIONER'S FILE - RECORD # **5937**  
 DATE PROPERTY FIRST CROWN GRANTED OR STAKED: **June 14, 1936**  
 NEAREST TOWN: **Prince Rupert** APPROX. DISTANCE: **17 Miles**

TOTAL PRICE OF PROPERTY: .....



## MINERAL PROPERTY





# ONE RESOURCES CANADA CORP.

MINERAL - OIL - AND GAS PROPERTIES OF CANADA  
 MANAGEMENT - DEVELOPMENT - JOINT VENTURE - STAKING  
 CASH BUYERS OF PLACER GOLD & CONCENTRATES

PHONE - (604) 669-4002

MEZZANINE FLOOR 448 SEYMOUR STREET VANCOUVER B.C. V6B 3H4.

## LODE METALS

129

### Porcher Island

(54° 130' S.E.) Utah Co. of the Americas is the assessed owner of ten Crown-granted mineral claims, Star Nos. 1 to 10, on the northeast coast of Porcher Island. The company also holds by record one full and five fractional claims (Mac No. 1, Mac Nos. 2 to 6 fractional) that were located in 1955 to fill gaps between certain of the Star claims.

Following a magnetometer survey of the claims in 1955, the company investigated the more promising magnetic anomalies by diamond drilling. Twelve holes were drilled, totalling 2,285 feet.

A good description of the magnetite occurrences on the Star group is in "The Iron Ores of Canada, Volume 1, British Columbia and Yukon," pages 21 to 24.

Dark-grey to greenish-grey, generally well-bedded rocks outcrop along the northeast coast of Porcher Island. The dark-grey bands are quite siliceous. Chlorite and, to a lesser extent, biotite and actinolite are conspicuous in the greenish-grey rocks, some of which appear distinctly tuffaceous. Epidote is common and in places abundant; brown garnet is less common. A little magnetite was noted in veinlets in the massive garnet, but neither the garnet nor the epidote is closely associated with the magnetite deposits.

The rocks strike northwestward and dip northeastward at angles of 60 to 70 degrees. They have been described as schists, and undoubtedly this term is generally applicable over a larger area, but in the vicinity of the deposits an appreciable percentage of the rock is not markedly schistose. The schistosity, where present, is essentially parallel to the bedding.

The magnetite is very fine grained. It occurs in conformable streaks and lenses in the more schistose parts of the greenish-grey rocks. In a very few places it occurs as a narrow band of solid mineral. A minor amount of fine pyrite is commonly present in the better-mineralized areas. Minute amounts of chalcopyrite were noted.

The locations of the magnetite-bearing zones investigated by diamond drilling are shown in Figure 12. The drilling indicated, to a depth of 150 feet, at least several hundred thousand tons of magnetite-bearing rock with a grade of the order of 35 per cent iron. The drilling emphasized, however, the streakiness and lenticularity of the occurrences. The magnetite is in lenses commonly separated by greater thicknesses of waste. The lenses are generally less than 15 feet in maximum thickness.

