

671631

642 CLARK DRIVE
VANCOUVER 6, B.C.
PHONE 255-8488
TELEX 04-5344

NEWS LETTER TO SHAREHOLDERS

August 15, 1968



"Pulling Core"

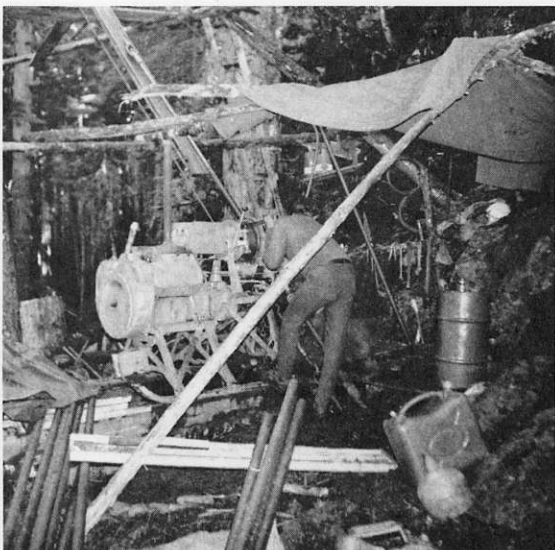
- * Long Diamond drill holes are now being drilled at 45° angle across ore zones exposed by surface trenching.
- * The holes are placed 150 feet apart and a minimum of three 500' holes are being drilled.

Exploration development work has been continuous since mid-April. The access road was improved, a good tent camp established, detailed prospecting, surface trenching and geological mapping and assaying has been completed. Good grade copper silver mineralization has been exposed within a 400 foot wide by 600 foot long area open for width and length.

Diamond drilling will test the depth of an enriched shear zone with surface values of 3.37% Copper and 1.7 ounces of Silver across 25' and provide assay values across a 300' width of exposed mineralization.

When the drill results have been evaluated further drilling on a grid pattern is programmed to test extensions now covered by overburden and talus.

Latest surface assays and drill site location attached.



"Moving onto Site"

The property is located about 20 miles east of Terrace, only 10 miles off Highway 16 and within easy access to deep sea dock facilities.

Yours respectfully,

ALVIJA MINES LTD. NPL


per - Andrew Alex - Director