

TWIN
GLACIER
(EAST FORK)

THIRD GLACIER

ICE FALL

ICE FALL

- rust zone
- foliated and bedded fine gr. gneiss
- diorite
- volcanics
- ▨ more strongly schistose or maybe volcanics

1107

1110

1109

1108

A228
229
230
231
232
233
234
235

1963

1945

671582

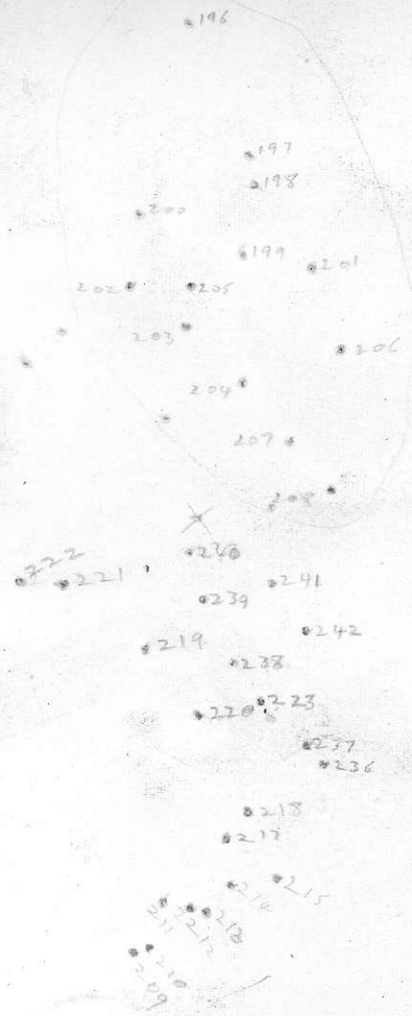


A107-11
A196-242
10-8-63

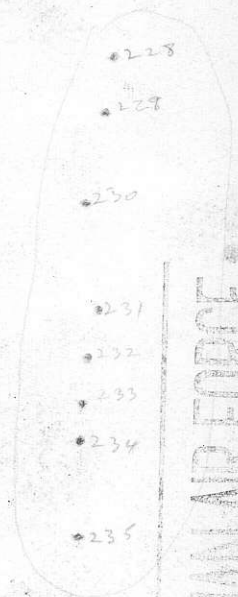
12226-59

A122 6-59

A197
198
A199
201
206
207
208
203
204
205
202
203
225
226
227
240
241
242
243
244
245
246
247
248
249
250
A209
A216
237
238
239
240
241
242
243
244
245
246
247
248
249
250
A209



A-196 to 242



ROYAL CANADIAN AIR FORCE
CROWN COPYRIGHT