

671432

SCHEDULE 'C'

LEGAL SURVEY PLANS

Maps 3 to 14.

NOTE: Maps 3 to 14 are individual plans of Lots 1687, 1690, 1691, 1693, 1694, 1695, 2065-2069, 2054.

MAPS ARE NOT TO SCALE

**REFERENCE: OFFICE OF THE SURVEYOR GENERAL
PROVINCE OF BRITISH COLUMBIA
VICTORIA, B. C.**

REFER TO MAP 2 SCHEDULE 'B' FOR CLAIM GROUP CONFIGURATION.

PLAN OF MINERAL CLAIM No 1687.

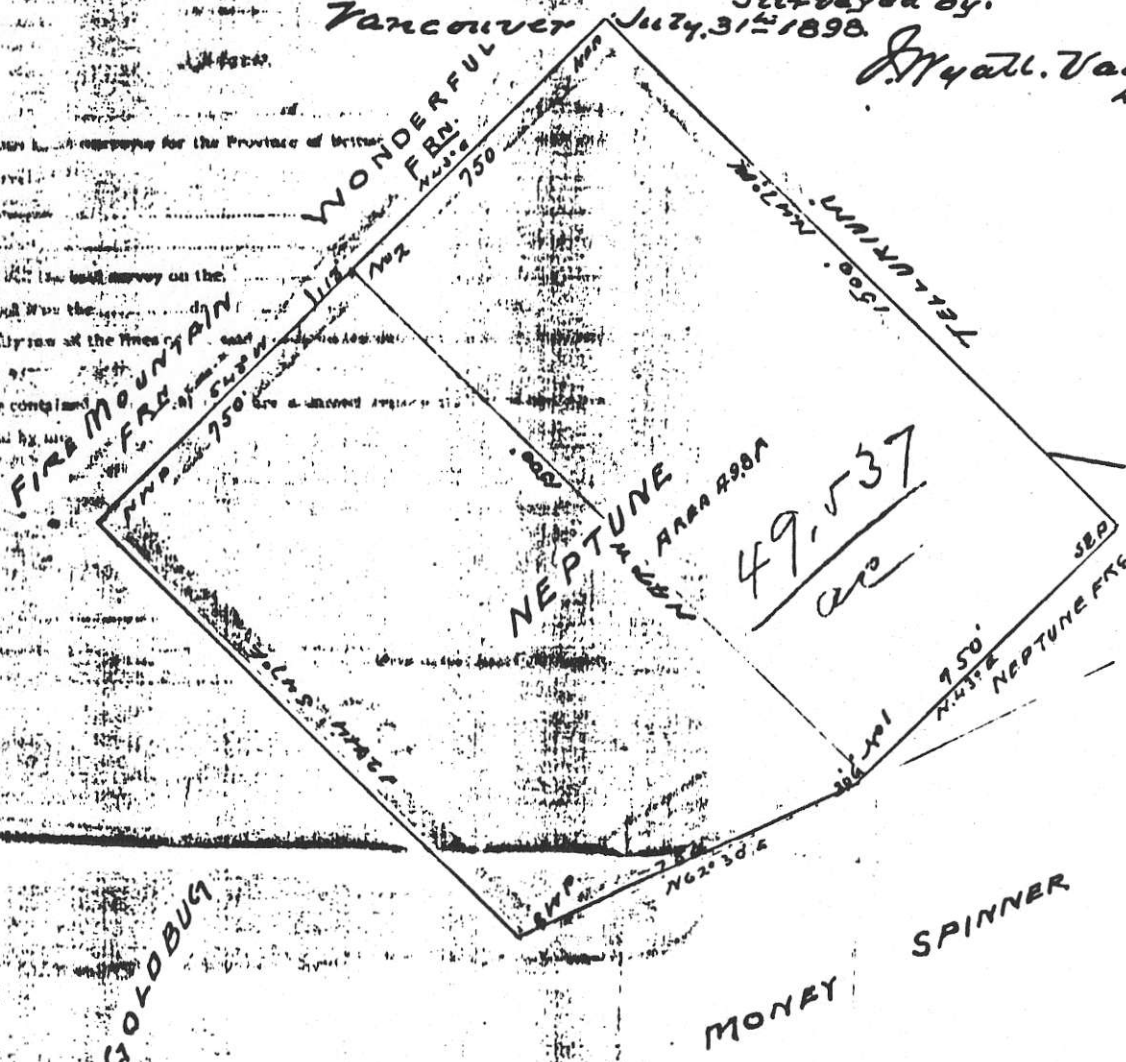
SITUATED ON FIRE MT NEW WESTMINSTER DIST. B.
OWNED BY FIRE MT GOLD MINING CO. LTD.

Sea Level 400' 1.1 N.

Vancouver

Surveyed by
July 31st 1898

J. H. Vaucl
A. H.



1690
PLAN OF MINERAL CLAIM. NO 1689:

SITUATED ON FIRE MT NEW WESTMINSTER DIST. B.C.
 OWNED BY TELLURIDE OF GOLD MINING CO. LTD.

Surveyed by

Scale 400' = 1" *W. H. Vaughan*
 Vancouver July 31st 1898. S. 42° 30' W. ATT. L. A.

BARKOLA

L. 1690.

WONDERFUL
 AREA 40.70

40.70
W

WONDERFUL FRYS

FIRE MTS 9301

BABY

1132.0
 1500.0

PLAN OF MINERAL CLAIM, No 1691.

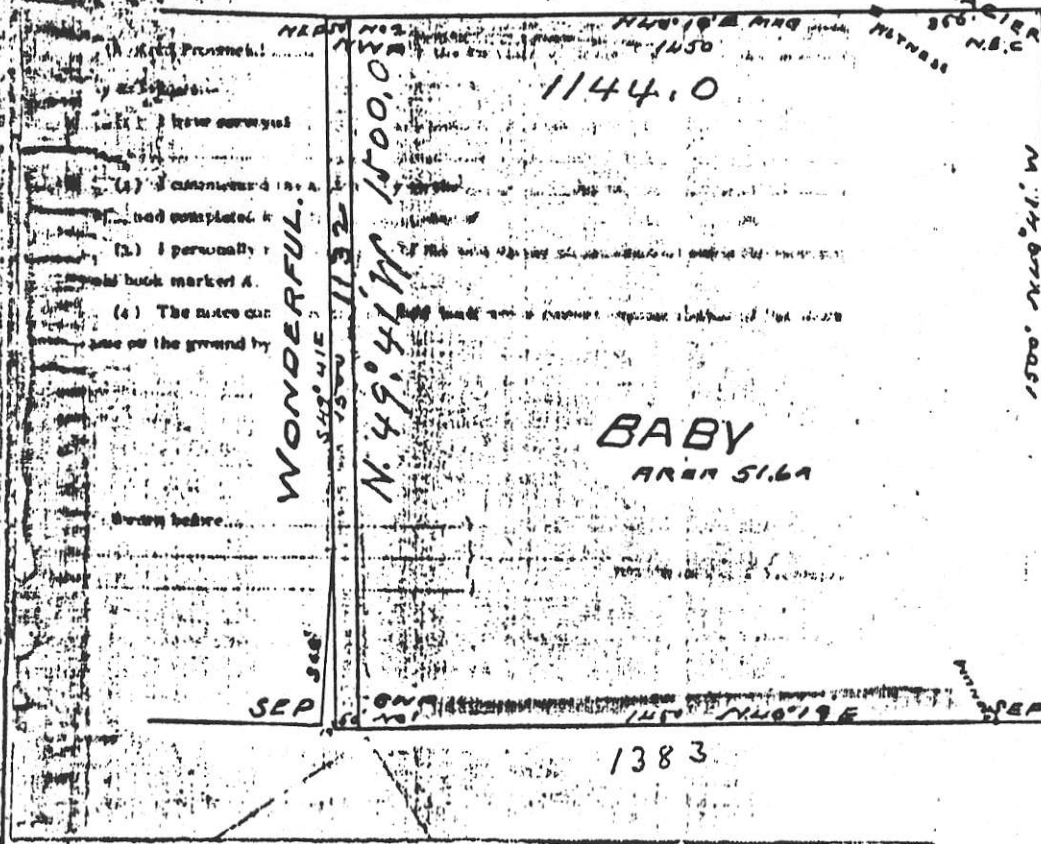
SITUATED ON FIRE, MT NEW WESTMINSTER, DIST. B.C.

OWNED BY, TELLURIDE OF GOLD MINING Co. Ltd.

Surveyed by

J. W. A. Vaughan
D. T. H.

Scale 400' = 1 in.
Vancouver July 31st 1898.



ST PLAN OF MINERAL CLAIM. N^o 1693.

SITUATED ON FIRE. MT NEW WESTMINSTER. DIST. B.C.

OWNED BY, TELLURIDE OF GOLD MINING CO. LTD.

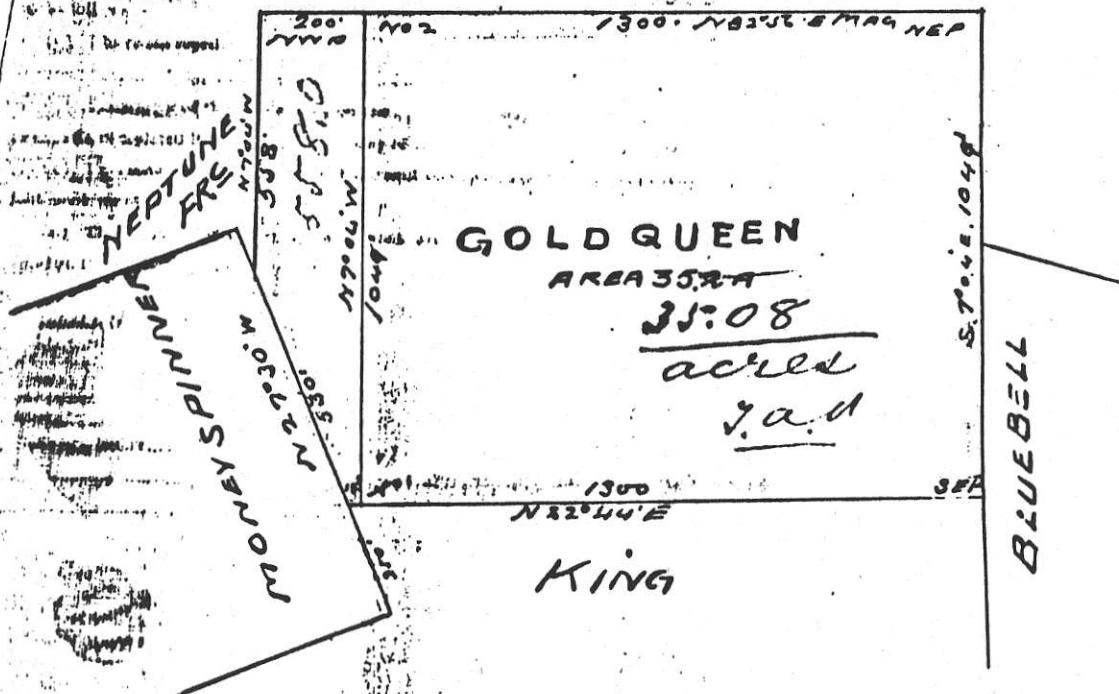
Surveyed by

J. H. Vaughan.
D.M.S.

Scale 400' = 1 IN.

Tanover July 31st 1898.

TELLURIUM PRINCE



IN PLAN OF MINERAL CLAIM, No 1694.

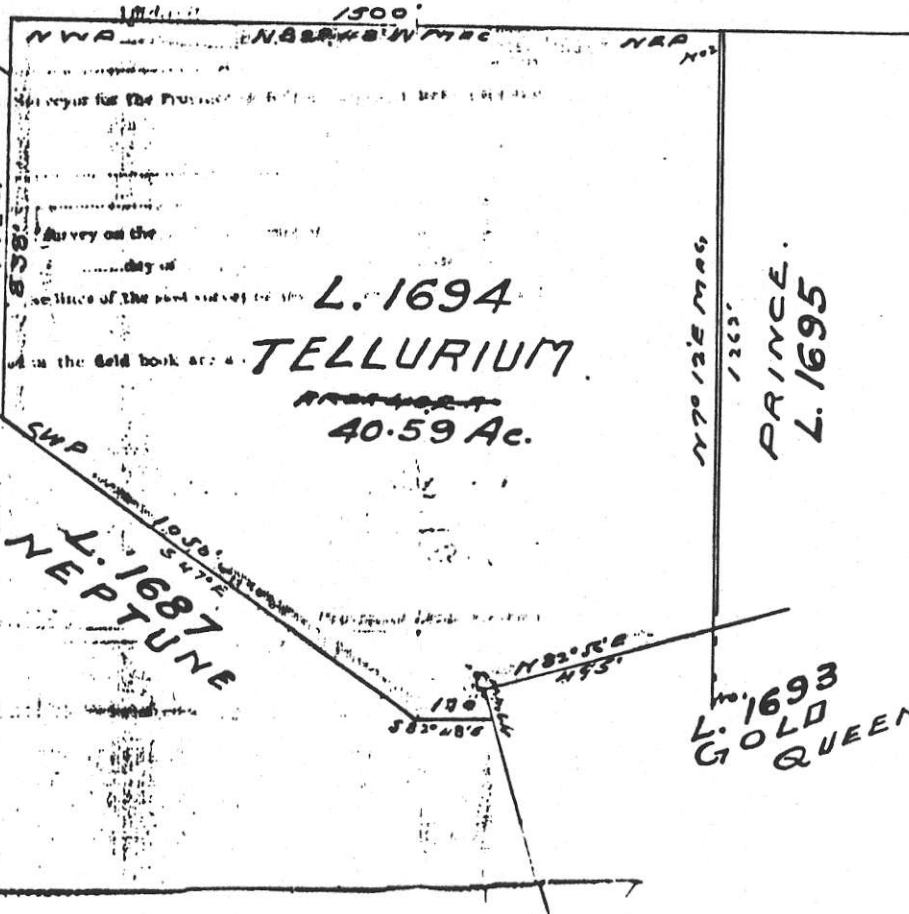
SITUATED ON FIRE MT. NEW WESTMINSTER DIST. B.C.

OWNED BY TELLURIDE OF GOLD MINING CO. LTD.

Surveyed by:
A. G. G. Vaughan

Scale 400' = 1" = 111'

Taken on July 31st 1898.



MAP 7.

MINISTRY OF MINES
PLAN OF MINERAL CLAIM. NO 1695.

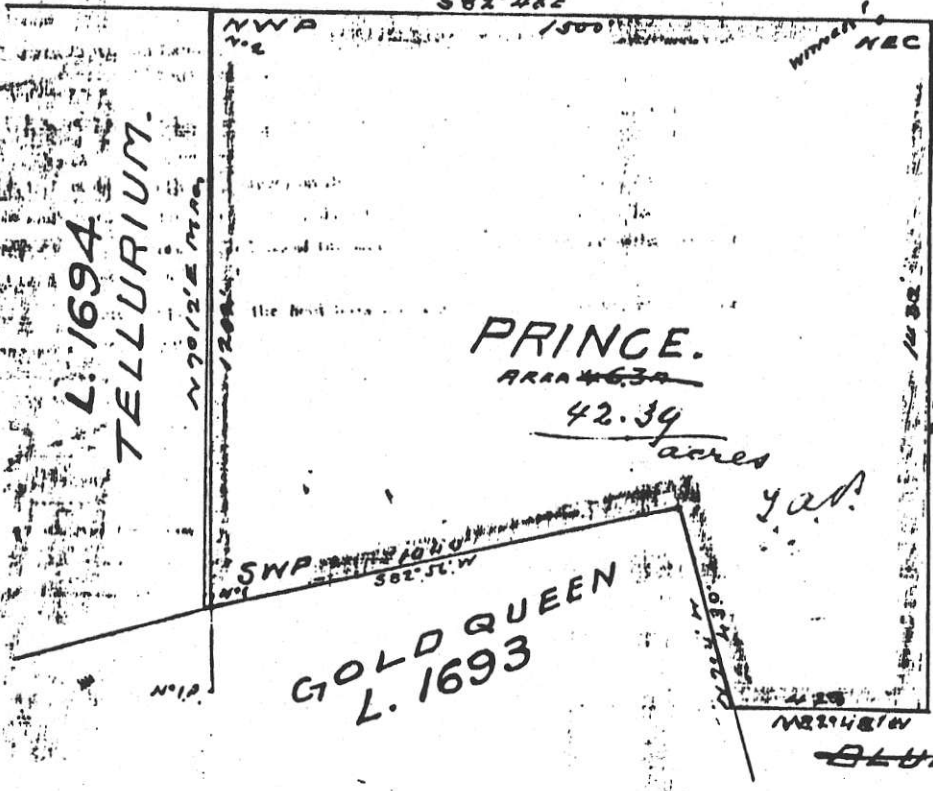
SITUATED ON FIRE MT. NEW WESTMINSTER DIST. B.C.

OWNED BY TELLURIDE OF GOLD MINING CO LTD.

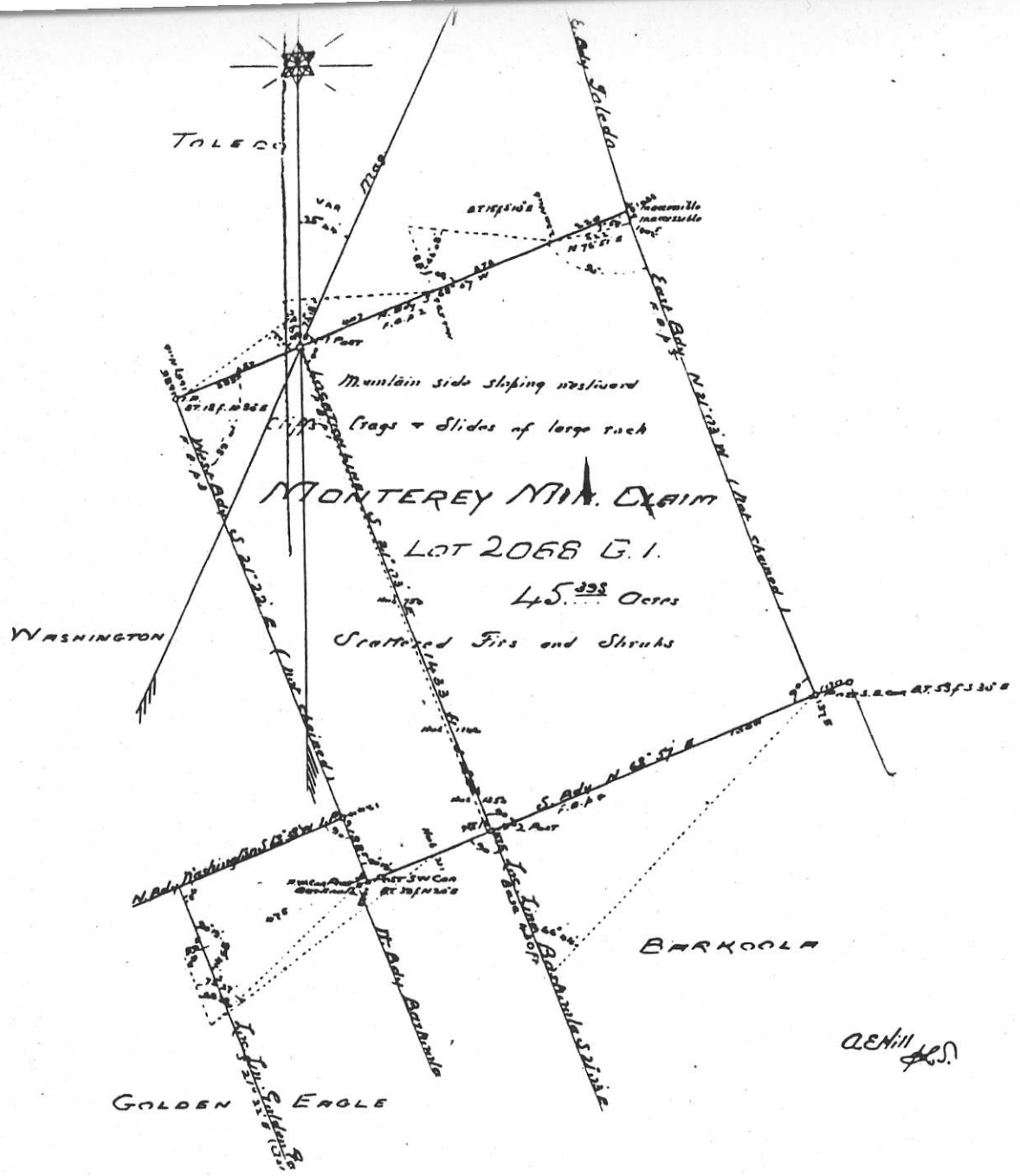
Surveyed by

J. W. Vaughan
D. G. H. S.

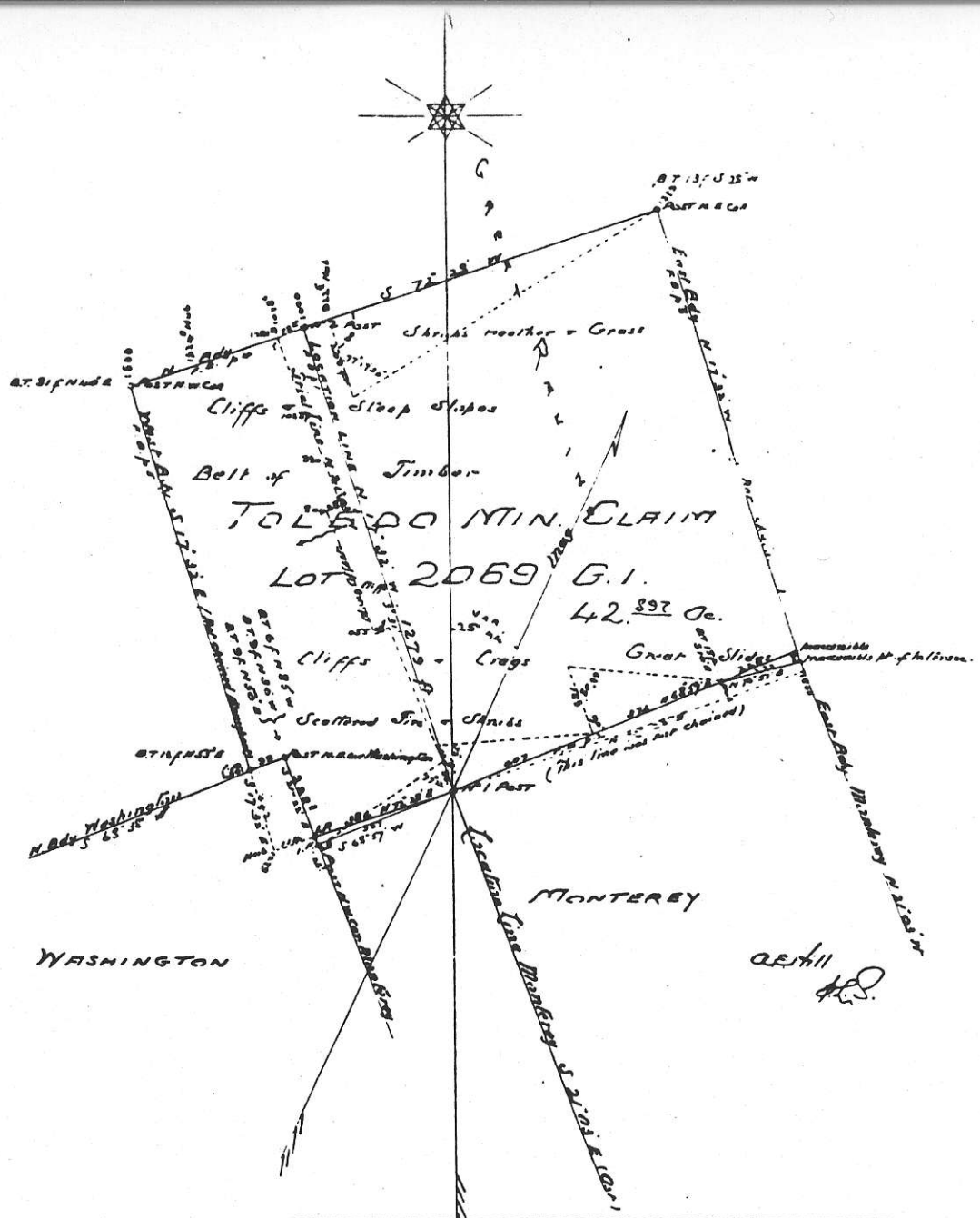
Scale 400' = 1 IN.
Vancouver July 31st 1898.
582° 48'E



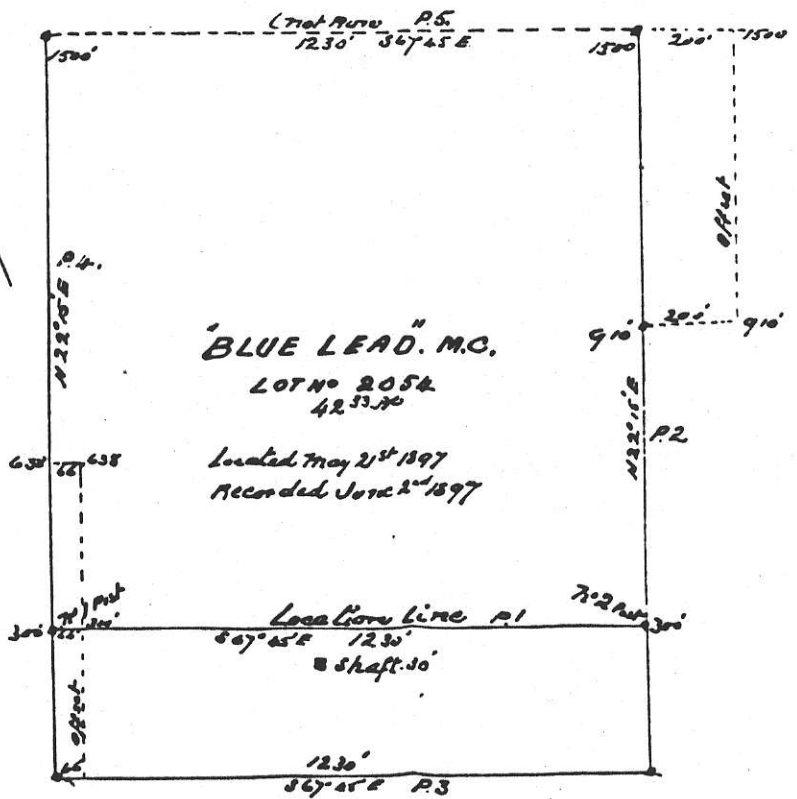
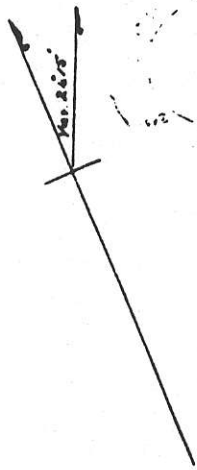
189



MAP 12.



MAP 13.



SCALE. 400 feet to One Inch

P1. P. 1

MAP 14.