

## Summit Camp Property

### Introduction

Schellex Gold Corp. of Suite 820, 650 West Georgia Street, Vancouver, British Columbia holds an option to earn a 100% interest in the Summit Camp claims from Tarbo Resources Ltd. The claims are in the Similkameen Mining Division. This report was prepared at the request of the directors of the company.

### Description

The Summit Camp Property consists of one fractional claim, four reverted crown grants and three MGS claims, totalling 34 units (Figure 2). All the claims are situated in the Similkameen Mining Division. The claims' data are as follows:

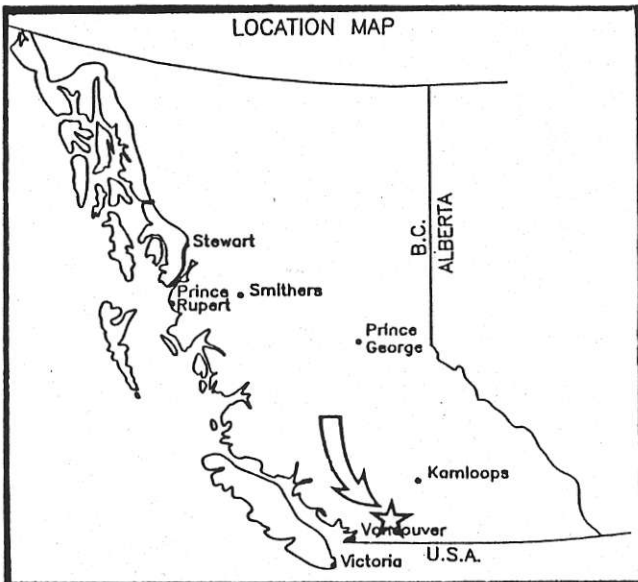
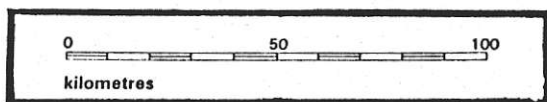
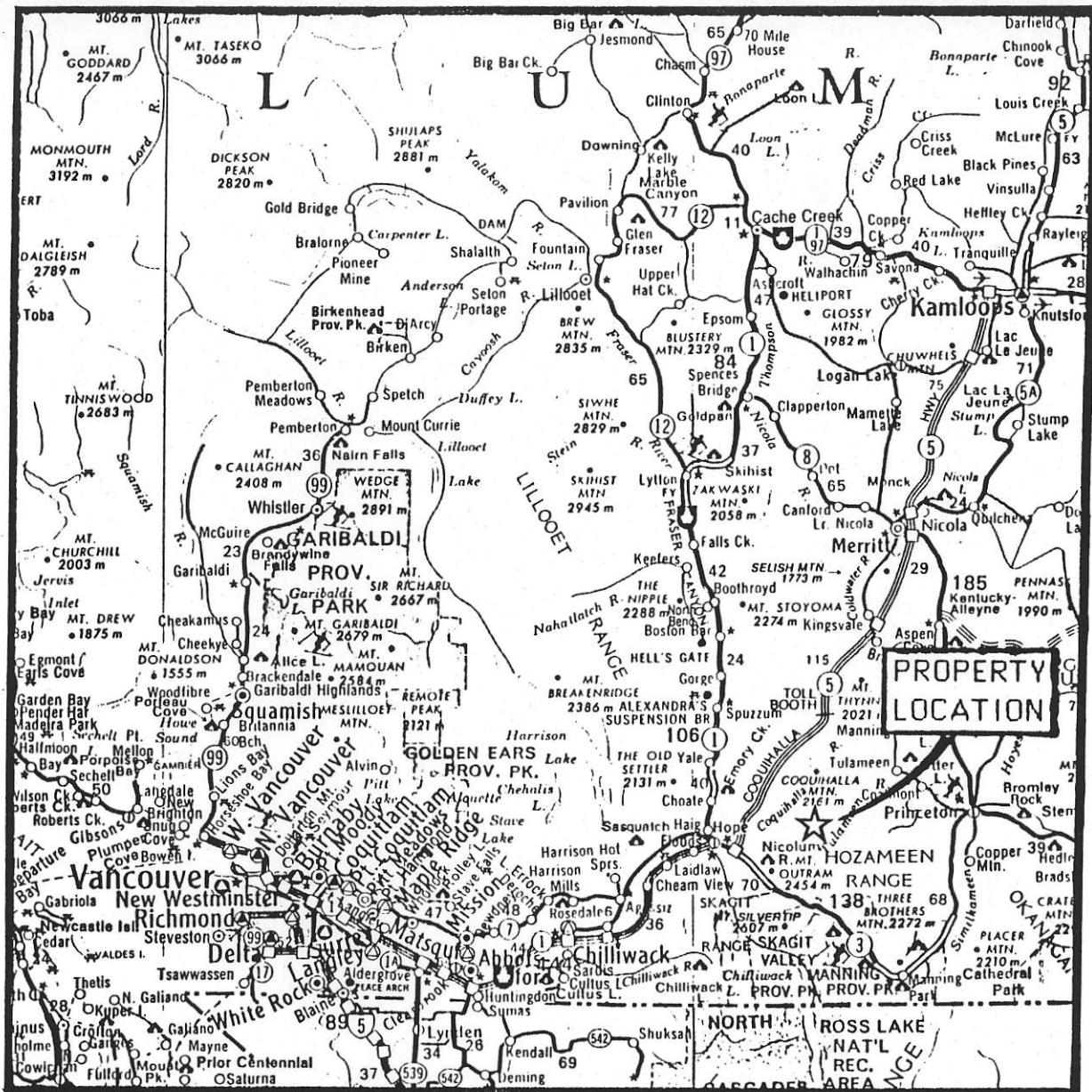
<u>Claim Name</u>	<u>Units</u>	<u>Record No.</u>	<u>Expiry Date</u>
Southern No. 8	1	461	12 Oct. 1991
Sutter (L93)	1	737	27 Sep. 1991
Skyline (L94)	1	738	27 Sep. 1991
Vigo (L91)	1	1053	25 June 1990
Lulu (L92)	1	1054	25 June 1990
Sky		1128	18 Aug. 1990
Spike	29	1215	27 Oct. 1991
Amberty		1671	9 July 1990

### Location, Access and Physiography

The property lies west of Treasure Mountain, 27 air kilometres east-northeast of Hope, British Columbia on Map No. 92H/6E at lat. 49°25'N and long. 121°45'W (Figure 1). Access to the property is by 44 kilometres of logging road from a turn-off on the Coquihalla Highway, 1.5 kilometres past the Toll Booth or 54 kilometres north of Hope. The property is also easily accessible from the village of Tulameen approximately 20 kilometres to the east.

The Southern No. 8 Claim covers the lowest point on an east-west trending ridge between Sutter and Amberty creeks. Both these creeks form the headwaters of the Tulameen River. Elevation ranges from 1400 metres to 1860 metres a.s.l. The western portion of the property straddles a prominent north-south ridge linking Mount Sutter and Tulameen Mountain. The treeline is at about 1830 metres.

Surface exploration can be carried out from the middle of May to late November, the property being snow-free during that period.



**SHELLEX GOLD CORP.**

---

**VENUS SILVER / SUMMIT CAMP PROPERTY**

**LOCATION & ACCESS MAP**

---

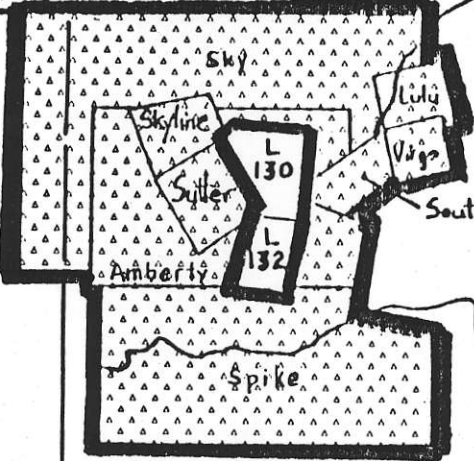
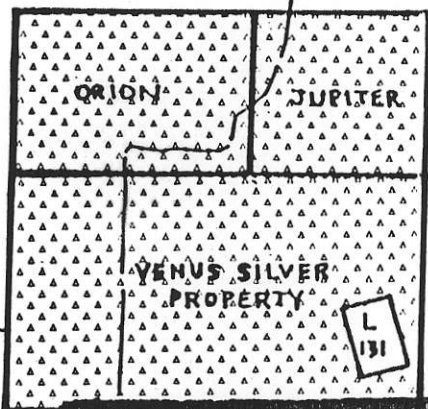
SIMILKAMEEN MINING DIVISION

---

DRAWN BY:	NTS:	DATE:	FIGURE:
B.K.	92H/6	APRIL, 1990	1



121° 04'



SUTTER CREEK

AMBERTY CREEK

VUZCH CREEK

OCTOPUSSY

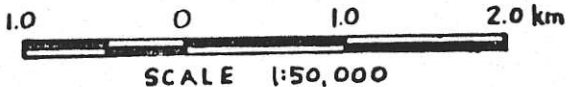
Hope

Argentum

49° 25'

Queen Bess 2

Queen Bess 1

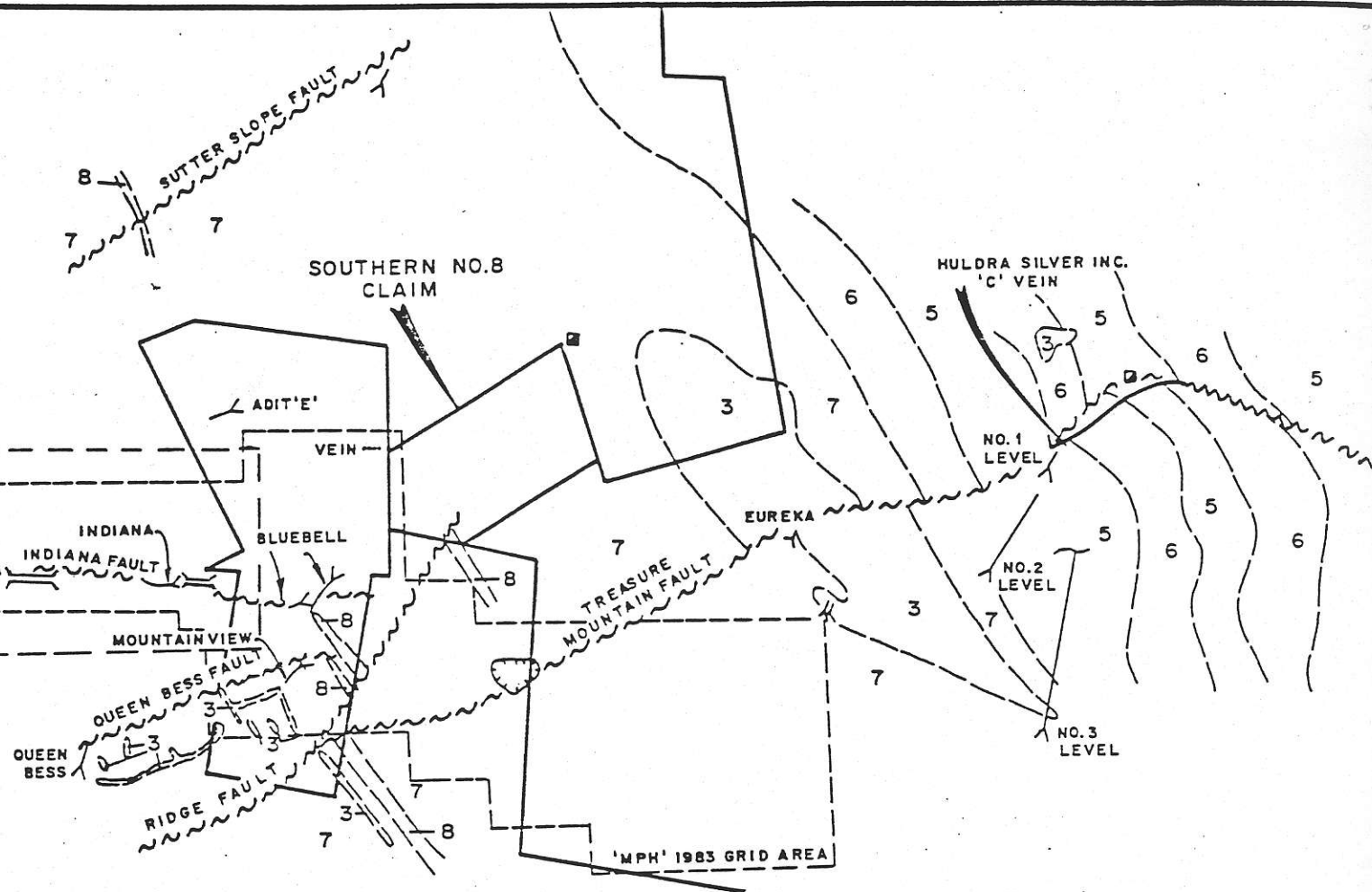


New Westminster Mining Division  
 Similkameen Mining Division

SCHELLEX GOLD CORP.			
VENUS SILVER / SUMMIT CAMP PROPERTY			
<b>CLAIM MAP</b>			
SIMILKAMEEN MINING DIVISION			
DRAWN BY: Bk	NTS: 921/6	DATE: APRIL, 1970	FIGURE: 2



SEE FIG 5



**LEGEND**

- 1 Granitic intrusive
- 2 Feldspar porphyry dyke
- 3 Intrusives ranging from dioritic to gabbroic in composition, some lamprophyres

**PASAYTEN FORMATION**

- 4 Conglomerate, minor arkose
- 5 Arkose, minor conglomerate and argillite
- 6 Predominantly argillite

**DEWDNEY CREEK FORMATION**

- 7 Agglomerate, volcanic breccia, tuff, conglomerate, argillite
- 8 Predominantly argillite, minor tuff

- Trench
- Defined fault
- Assumed fault
- Adit
- Contact (approximate)

Note: Property and grid location boundaries approximate only

After J.M.Black, B.C.M.M. Ann. Rpt. 1952

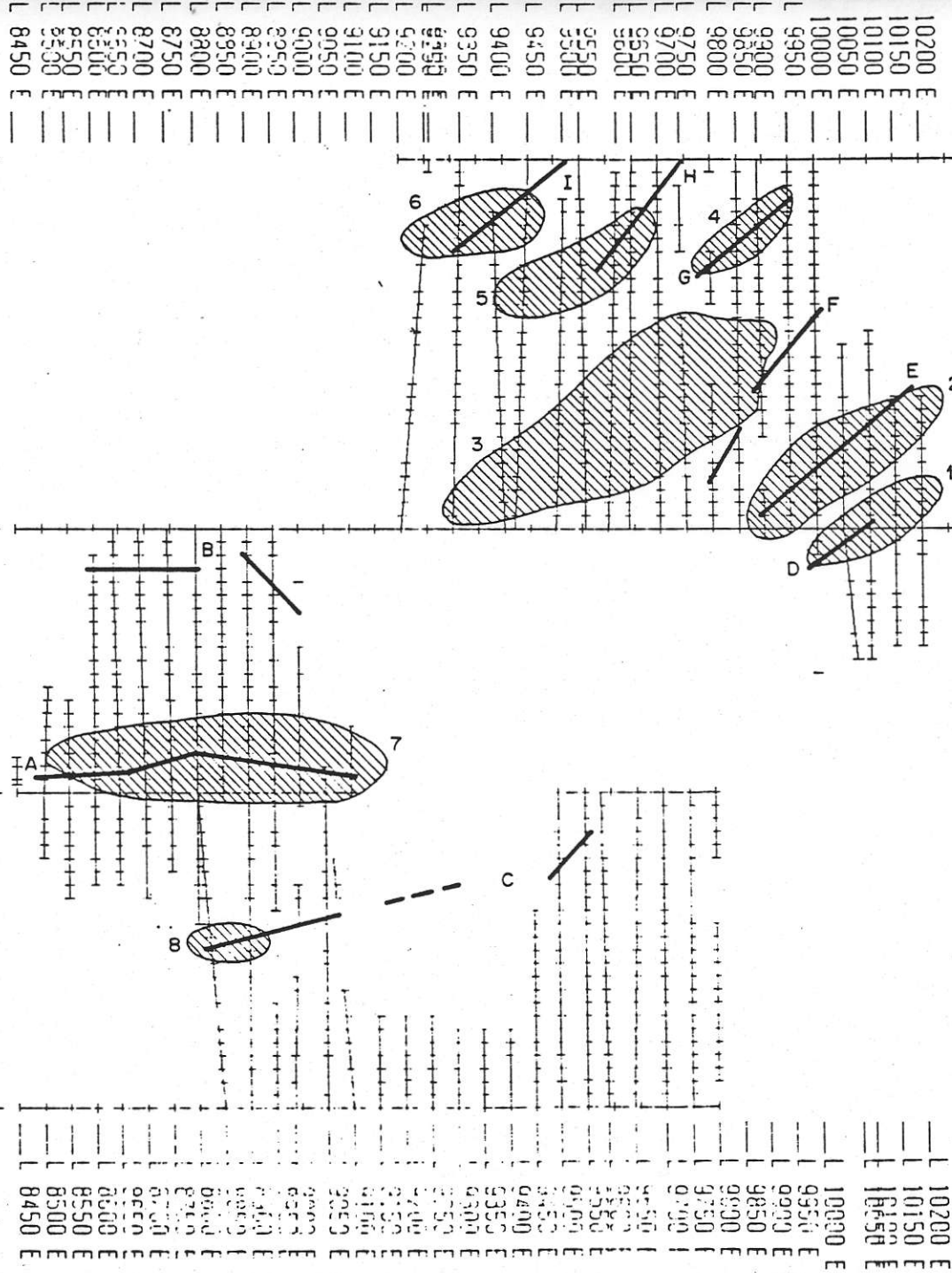
**SCHELLEX GOLD CORP.**

SUMMIT CAMP PROPERTY

**LOCAL GEOLOGY**

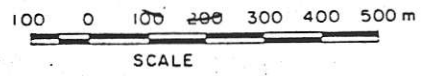
SIMILKAMEEN MINING DIVISION

DRAWN BY	NTS	DATE	FIGURE
	324/6	APRIL, 1990	4



LEGEND

- 4 Soil anomalies
- VLF-EM conductor axis



SHELLEX GOLD CORP.

VENUS SILVER PROPERTY  
 SOIL ANOMALIES and  
 VLF-EM CONDUCTOR AXIS  
 SIMILKAMEEN MINING DIVISION

DRAWN BY: B K	NTS: 92H/6	DATE: APRIL, 1990	FIGURE: 19
------------------	---------------	----------------------	---------------