

NORTH.

671380

OGATTA

924/8,9

22

21

20 20

Heavy low bush,
steep N slope

3300'

Py Sp 13th

Py

cherty seeds - Tertiary

3250

Bush

223

3250

Felds
Porph
Sp 14

3250

logged

26 3280

3500' Felds porphydyke

3500'

Sp 12

Specimen 12

124+00N

3520'

12400

Heavy bush

3570'

Aug dior
py specks
Spec 11

3650

car

3480'

qt pph

logged
logged

BASE LINE

INK GROUP
PRINCETON, B-C

1" = 400'

R. Phendler, July '69

4

3

3

8

77

15⁺ 3380' 15

BASE LINE

10

69400N

Fine grd granite

3400'

3550'

Spec 4

of porph dyke - Spec 4.
granite

14

9

59400N
5900'

3500' & 3500'

steep slope

3400'
3400'

3

Fine grd pink granite
fine pink granite
cliff

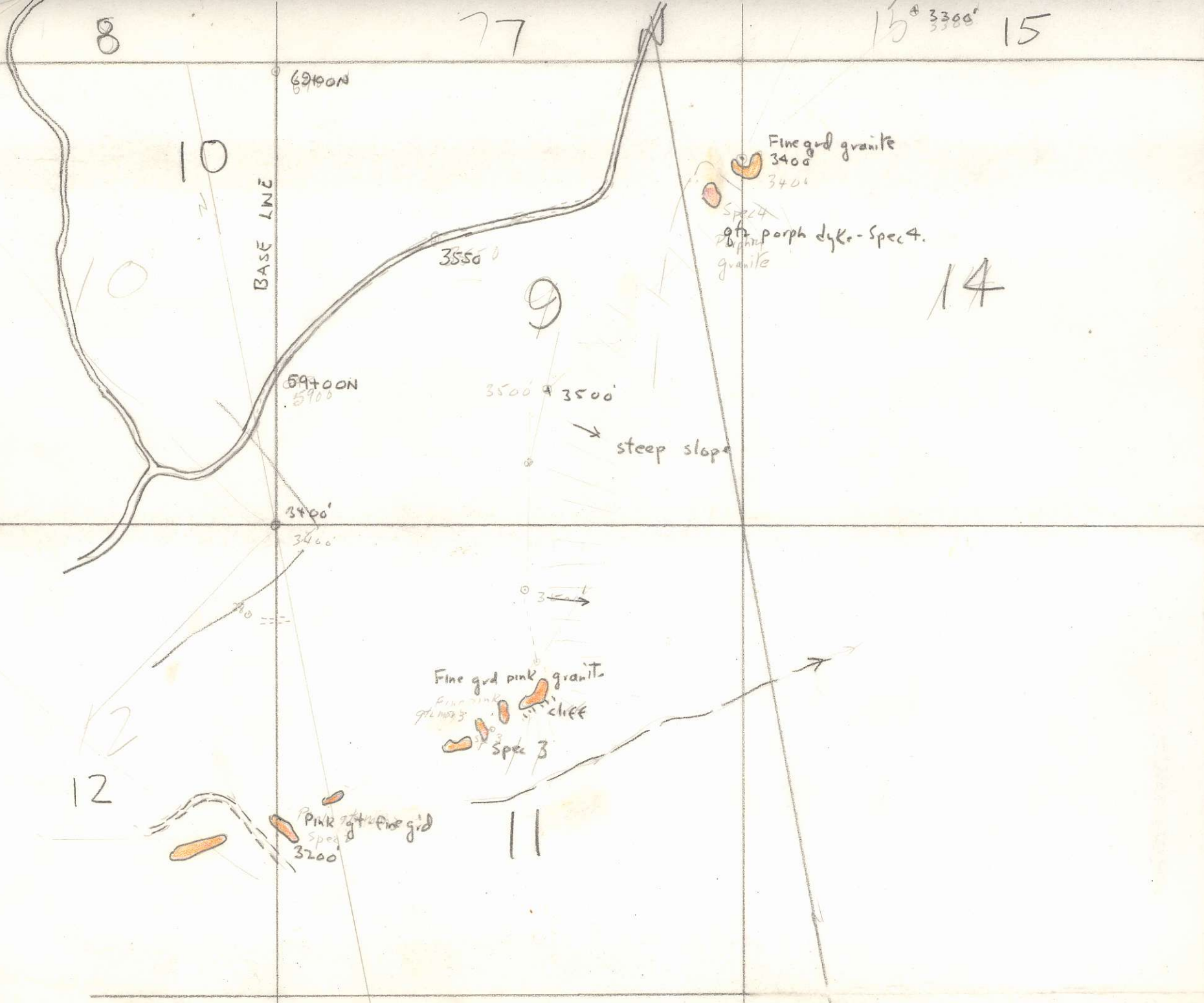
Spec 3

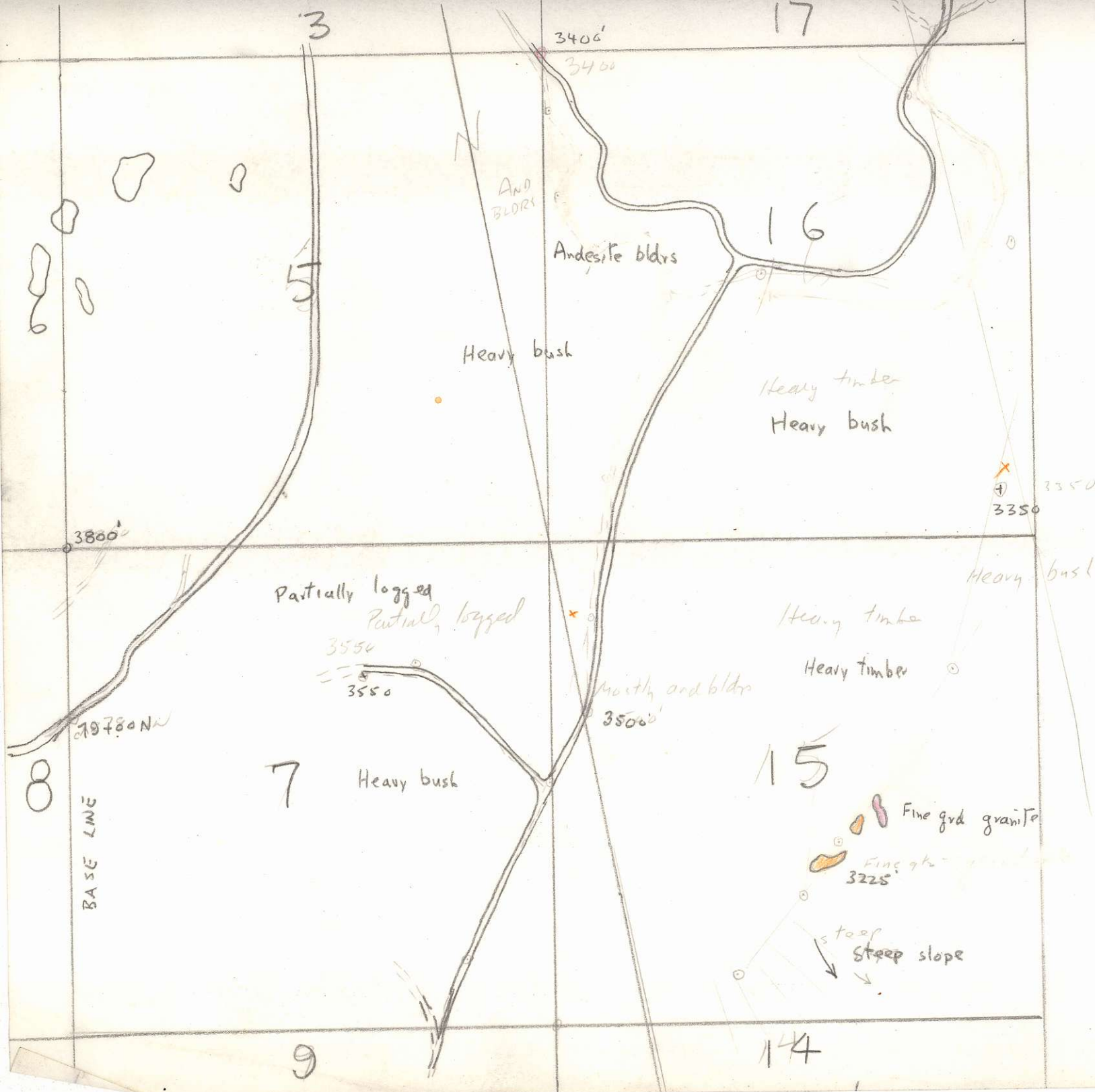
12

12

Pink granite fine grd
Spec 3
3200'

11





20

19

21

18

Bush

3250
3250

Mod grid and
And. Spec 6
3250
3250

Bush

17
Bush

And

Andesite, Mod grid
Andesite, Mod grid
Spec 5

INK GROUP
PRINCETON, B.C
1" = 400'

R. Phendler July '69

BASE LINE

114+00 N

119+00 N

logged

3

4

99+00 N
97+00 N

5

16

Flag

N

3570

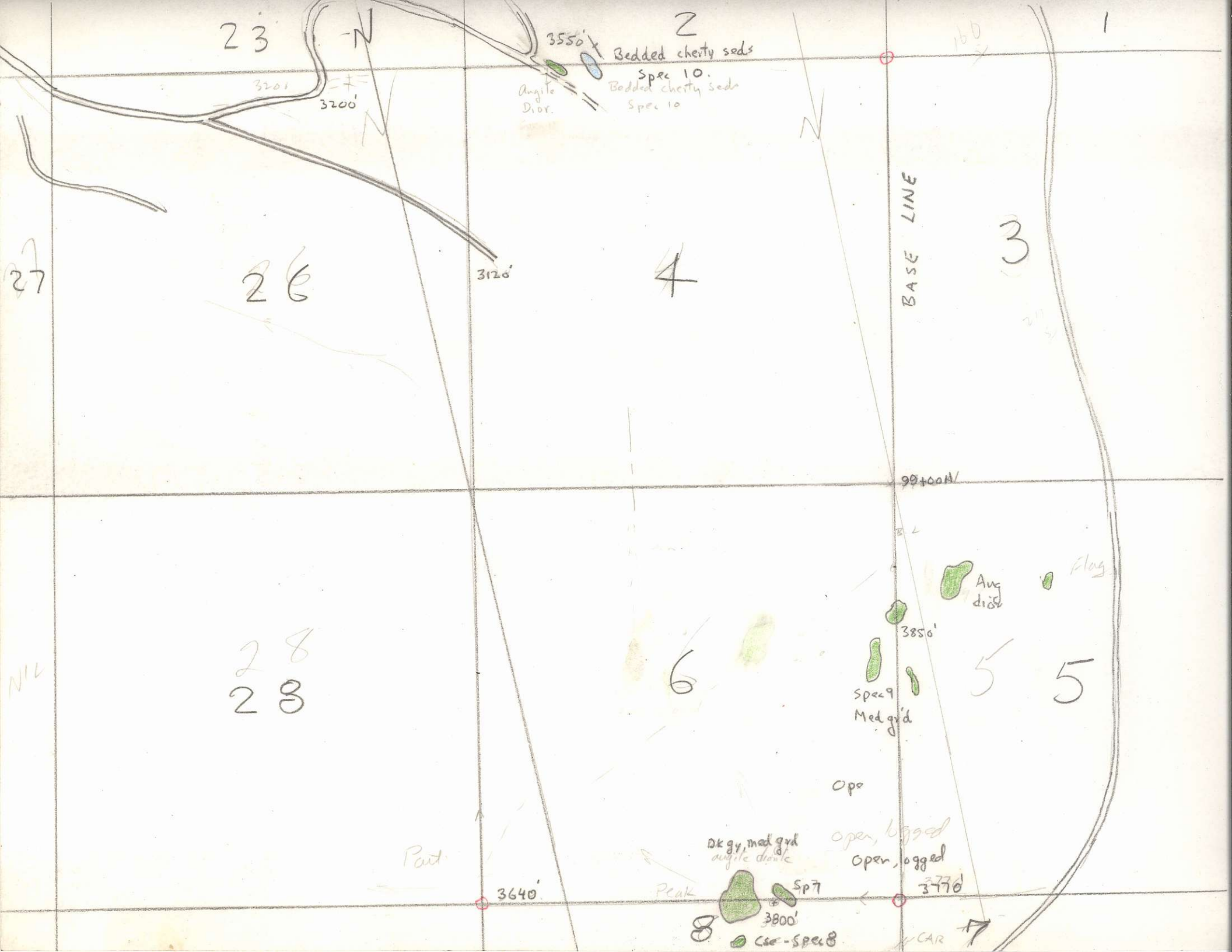
310
6
150

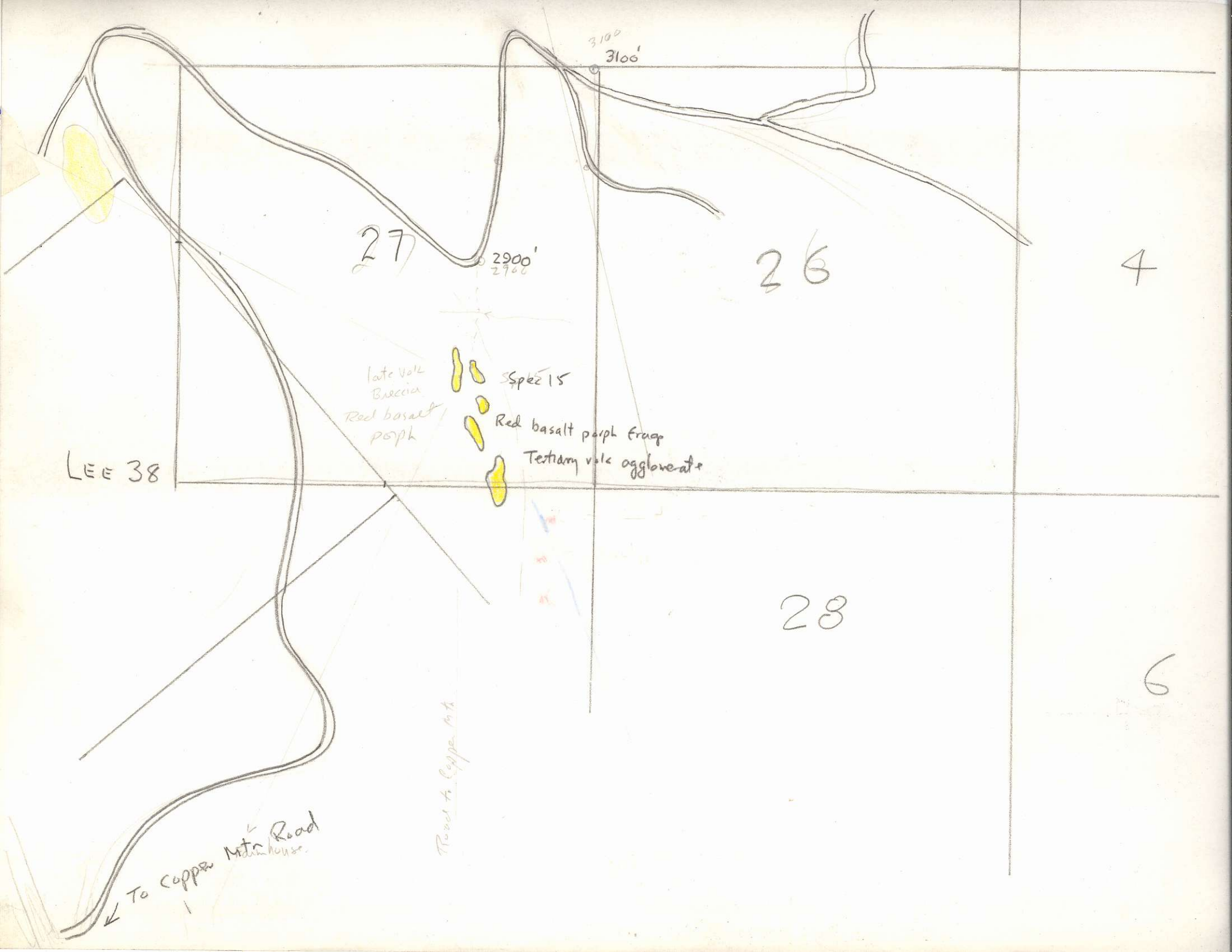
166
3

||
||

||
||

||
||





27

26

4

LEE 38

28

6

3100
3100'

2900'
2900'

late Volc
Breccia
Red basalt
poph

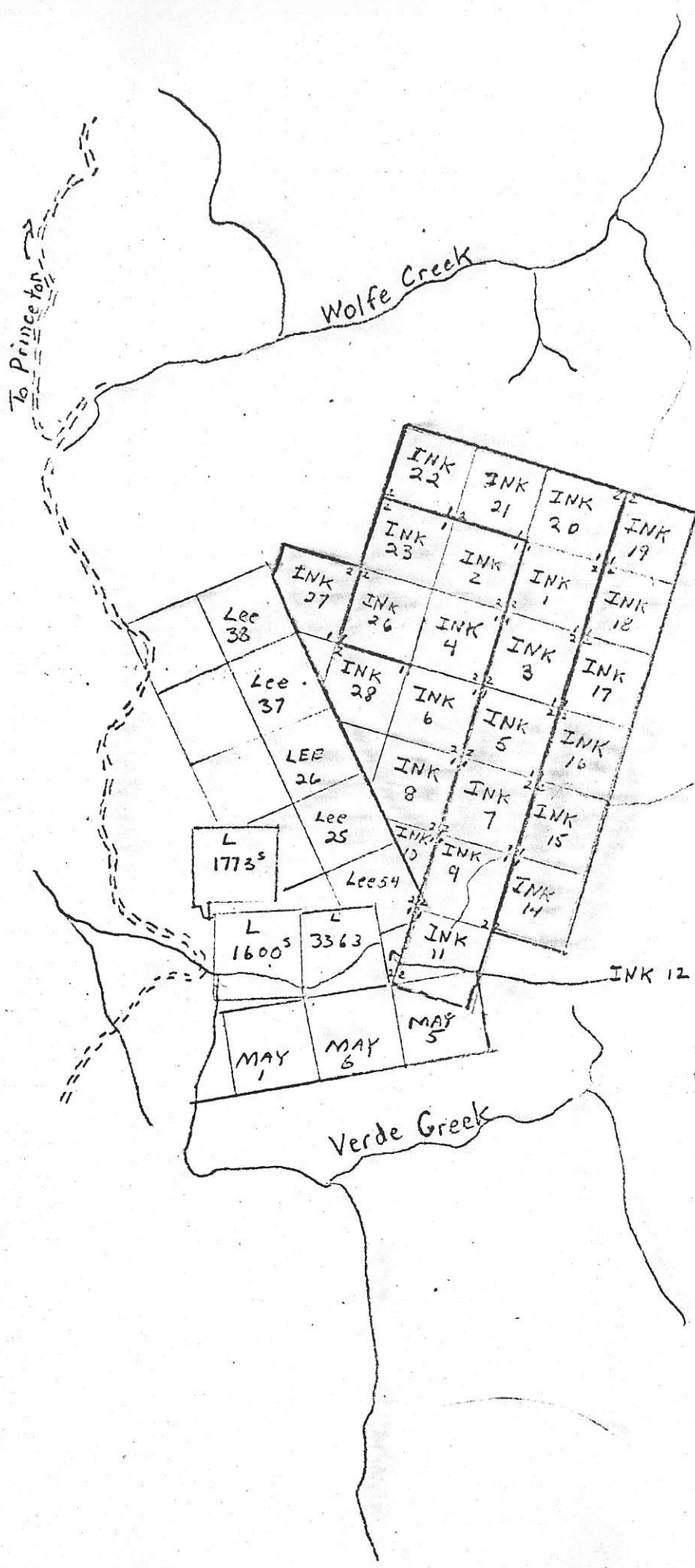
Spez 15

Red basalt porph frag

Tertiary volc agglomerate

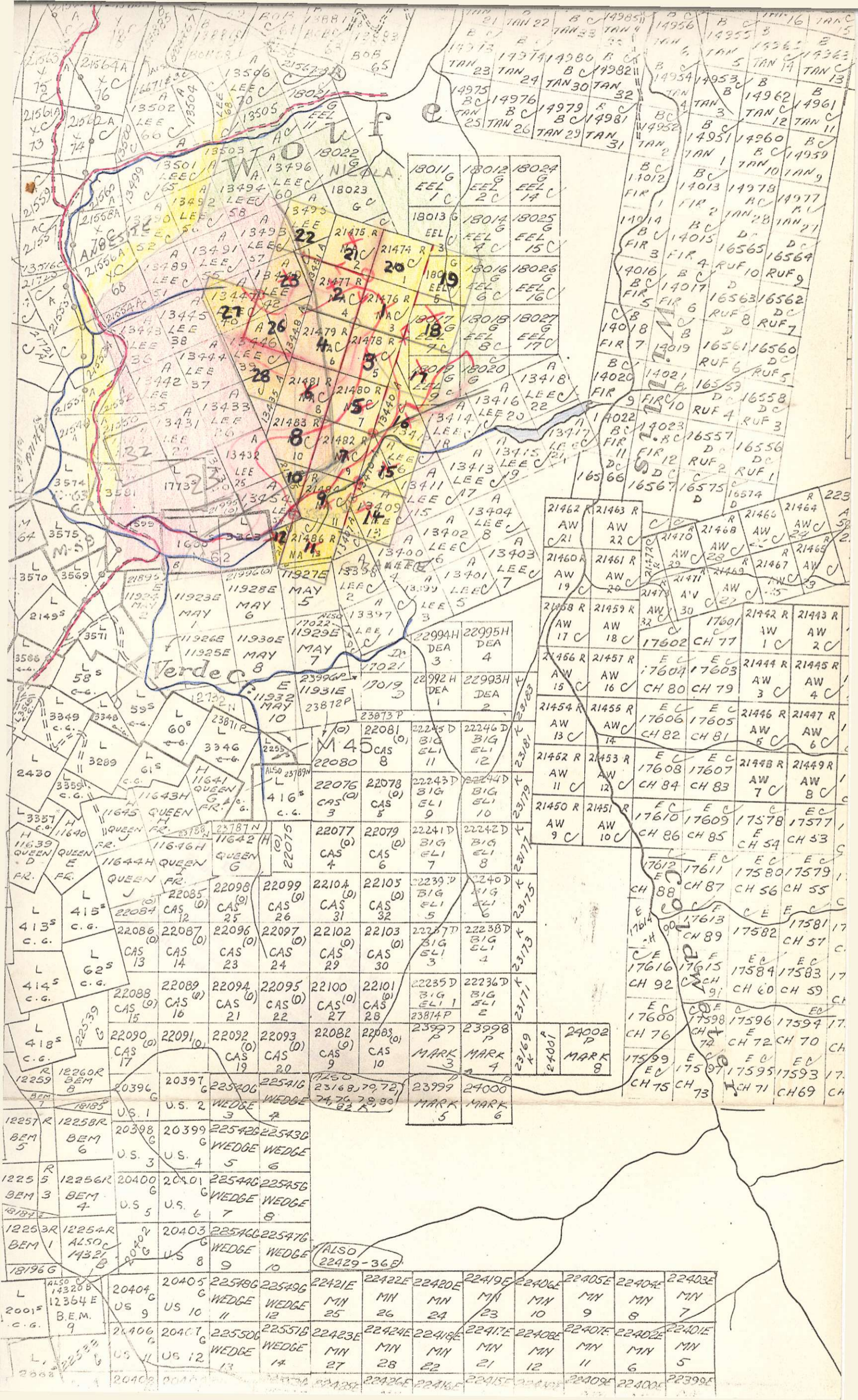
↙ To Copper Mt. house
↙ Road

Road to Copper Mt.

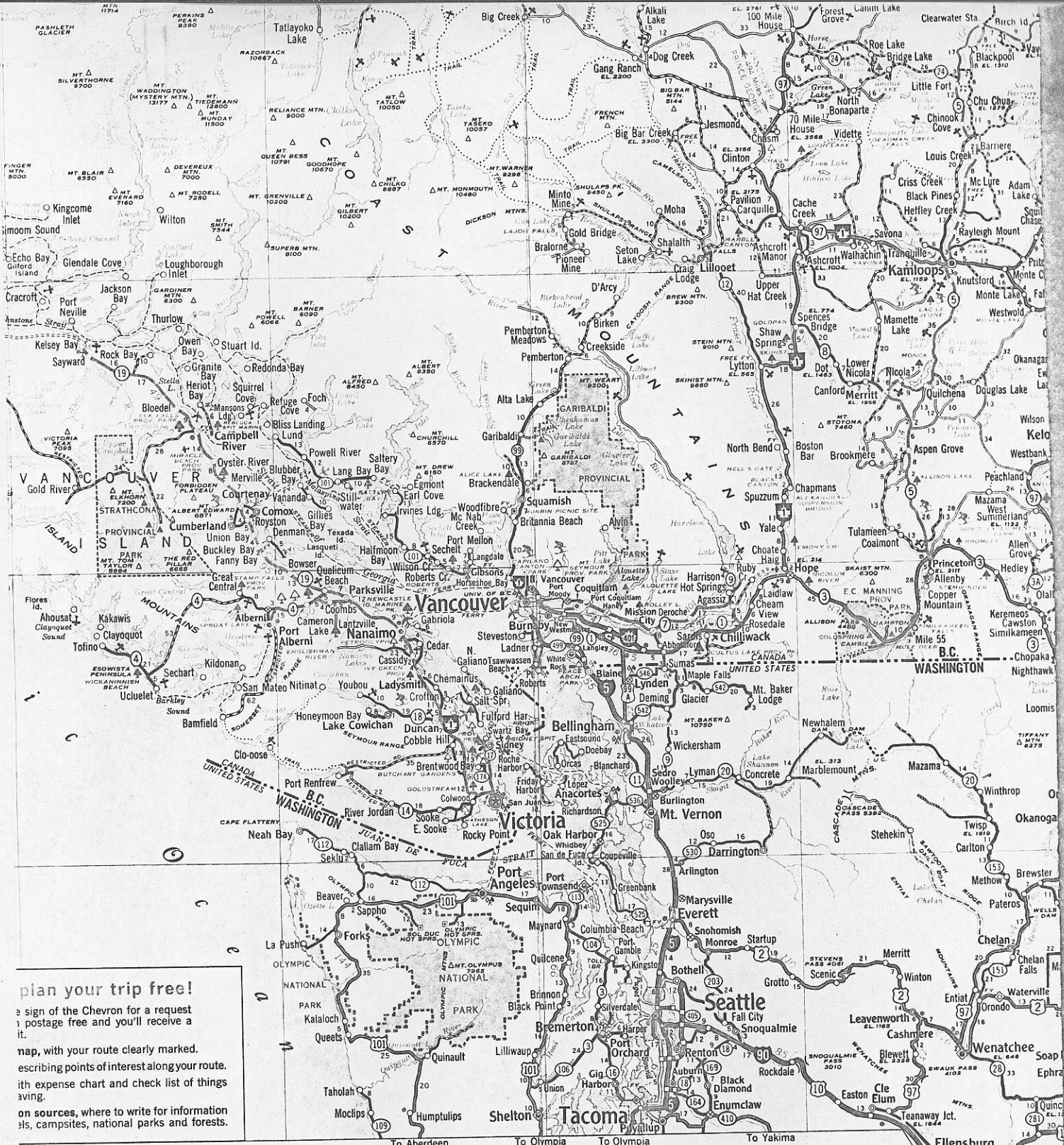


INK Group
1 - 12, 14 - 23, 26 - 28

—— Location Line
—— Boundary Line



This map is prepared to serve as a guide only.
Positions of unsurveyed claims and placer leases
are plotted from locators' sketches
and are not guaranteed.
Letters C.G. indicate claim is Crown-Granted.
Symbol "C" indicates claim has forfeited.
B. C. DEPARTMENT OF MINES AND
PETROLEUM RESOURCES



Plan your trip free!
 A sign of the Chevron for a request
 postage free and you'll receive a
 it.

Map, with your route clearly marked.
 Describing points of interest along your route.
 With expense chart and check list of things
 saving.

On sources, where to write for information
 on campsites, national parks and forests.

5

6

7