

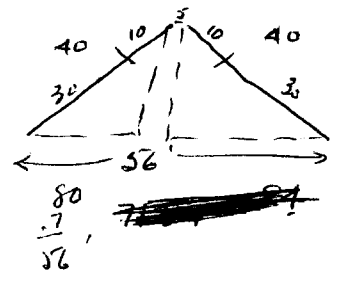
J-1

Jean J.W. 671359

<del>10-20</del>	53551	10-20	0.38	0.004
	53552	20-30	0.13	0.014
	53553	30-40	0.22	

$$\begin{array}{r} 3 \overline{) 73} \\ \underline{60} \\ 13 \end{array}$$
 0.24% / 30'

$$\begin{array}{r} 30 \\ 24 \\ \hline 54 \end{array}$$
 0.27%



J-2

53591	10-20	0.67	6.009
	20-30	0.09	0.001
	30-40	0.13	—

$$\begin{array}{r} 3 \overline{) 89} \\ \underline{60} \\ 29 \end{array}$$
 0.30% / 30'

Average = 0.27% / 56'

JW-1 48019

	30-40	0.11	0.008
	40-50	0.18	0.018
	50-60	0.01	0.009
	60-70	0.09	0.017

$$\begin{array}{r} 4 \overline{) 39} \\ \underline{36} \\ 3 \end{array}$$
 0.10% Core

48028	120-130	0.31	0.030	113-122	0.18	0.007
	130-140	0.24	0.029	122-136	0.29	0.026

Sludge

BACON & CROWHURST  
CONSULTING ENGINEERS