

Hi Claim
93N

671316

~~HARIVEL~~

COLIN R. HARIVEL

May 28th 1969

~~Thurs.~~

- moved in to Hi Group.

May 29th 1969

Thurs.

Day ② - Raining (showers)

- Radio sched. with Ft. St. James
A.O.K. - resched. for Sat.

- 8:30 got visit by 3 men
in TRANS-PROVINCIAL Beaver.

- looking for Alfred Bressette

Set Altimeter 2900 (camp)

- general recon. of prop.
+ location for #100(+) claims

3425'

- location via 764' FN69-5-29
elongate 1/2 of a traverse

29th May 1969 Page 3

Day 2

CH 69-2952 contd.

COLIN P. HARVEL

feldspars in rephelict's
pyrite on fracture surfaces
altered to limonite

some of the limonite within
the rock - particularly associated
with the mafics - is "good colour"
for chalc. origin.

some fracture surfaces
epidotized; sometimes veins
and veinlets (up to $\frac{1}{4}$ " width)
with epidote + calcite.

- heavy fracturing in etc - several
directions, outcrop generally
massive nevertheless.

sometimes fractures filled by fine-grained acid material with only $\approx 30\%$ mafic.

this attitude also corresponds to a weak foliation ←

May 30th 1969. Page 4

Day 3 COLIN F. HARVEY, windy

at higher camp 2900'

left camp 10:20

- ofc 1950' along location line

measures 50x10'

(called 'Syenite', i.e. intrusive)

- ofc 2020 -

along ridge

intrusive cut by basic dyke (?)

hornblende with calcite + epidote^(es)

on vein-fracture surfaces

dyke CH 69-5-30-1

CH 69-5-30-2

radiating clusters of hornblende

(near reaction boundary - contact?)

and subhedral to euhedral

hornblende

← Fractures: 140/90° (along th. dir.)

dyke material often trends + epidotized
fractures cont. calcite)

: 44/vert or sl north dipping

: 110/60° : 25/51E : 145/12 W

grain size extremely variable

med. gr. acid intru. CH 69-5-30-3

COLIN P. HARIVEL

May 30 1969 Page (4)

CH69-5-30-4 - new rock-type
gabbroic texture - contact at
2100-70'

"
the sample taken at
edge of burn on 2300' & 3540'

Altitudes 2800' (at least)
(-100')

MAY 31 1969 Day (4)

- on claim line from H1 100#101
to 12#103

- 720' % of volcanic breccia

(1)

CH69-5-31-1

(2)

+ coarse grained - (unusual?)
with large crystal-look biotite

31-2

% as for [31-1] from 900'
to 1100' along cl. line.

% [31-1] 1200 - 1280'

3/5⁰



1/2 24 216

106

107



102

CH 69-5-31-3

103

104

200

100

101



May 31 1969

Page 5

Day 4

COLIN P. HARIVEL

Sample CH69-5-31-3

o/c on n. west side of lake

300-500

also o/c to west 500' pt.

much o/c along s. east
shore of lake

800 + 100 to SW

o/c with fractures; 10/70 E

120/70 S

May 31 \Rightarrow Hi #106
#107 (units)

for units Hi #106, #109

traversed to 64 NW NE

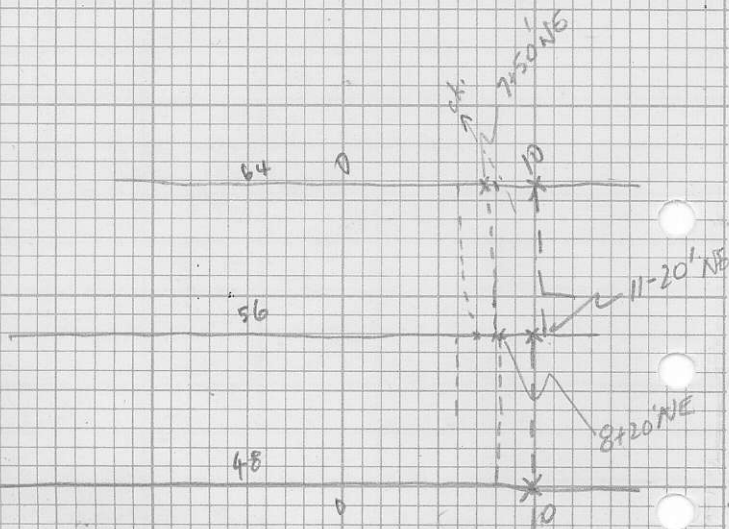
- all o/c observed used to
- Coarse grained - trawse
- o/c on every top. high
- fractures both epidotized
- and much K-feldspar vein(?)
- end of fracture alteration

May 31 1969

fracture: (contd)

also: on fracture
surfaces pyroclastic
staining as well as
limonite of various
colours

also hematite on fr.
(but old, surficial ex.)



June 1 1969

Day (5)

- late start: high winds,
cool, much cloud (90%)
wind from west (good)

flagging soil sample lines
10 NE (64 NW to 48 N)

begin ↑ - end 10 + 80' NE on
56 NW.

back to 10 NE, 56 NW.

June 2nd 1969 Day (6)

- Radio sched AOK

- Chopper pad 2 1/2 miles
inland.

June 3rd 1969 Day (7)

chopper pad 100 yards to
west of campsite

June 4 1969

COLIN P. HARIVEL

Page 7
Day 8

Sampling from 64NW, 10NE to 48NW, 10NE

- at 60NW, 10NE syenite to west 30'
20 x 50

- at 58NW 10NE large ridge of %C
(59NW 10NE to)

angular float in hole obviously
derived from local rocks

- this location: some quartz vein
with pyrite. In general limonite
much more prevalent here
than elsewhere. Rock type
is pyroclastic porphyry volcanic
with ~~and~~ pyrite & minor chalcopyrite
filling fractures.

CH 69-6-4-1

- at 56NW, 10 + 50NE

soil sample in red interstitial
organic rich soil

- di from 58NW to 56N all syenite
sometimes cut by f.y. mafic dykes
~~and other times~~ all by f.y. acidic dykes

~~Report to Cam~~

Tape to Joan

~~Code to Randy~~

look up Sensitivity

June (4th) 1969

Page (8)

Hi Group,

COLIN P. HARIVEL

54NW 10NE $\frac{1}{2}$ syenite: fractures 48/90' - 55/90'
05/90'

aplitic intrusion $2\frac{1}{2}$ - 3" dyke

53NW $\frac{1}{2}$ syenite to west 20' on SE head of
ridge 100' exposed.

ended day with

B-69-11 (a, b) 248NW6NE

visit from Emier & Gae Leith

June (5th) 1969

Day (9)

soil sampling.

- line 8NE (48NW to 64NW)

June (6th) 1969

Day (10)

- visit from Cam

- moved to new camp in
swamp

June (7th) 1969

Day (11)

- set up new camp.

June 8th 1969

Day (11)

- fine, warm, <5% clouds
- radio sched. cancelled & re-scheduled for 1830-1900 hrs this day
- re-sched. could hear F.S.J. + could transmit to "D" & "A" but all stations unclear in F.S.J.
- Randy transmitting F.S.J.

on line 140° from camp

- of syenite (?)!! CH-69-6-8-1
(gabbroic texture)

(4)

heavy fracturing, quite magnetic med to fine-grained with occasional coarse-grained

saussuritized (!) + calcite on also generally saussuritized (superficial) limonite (hematitic → chalcop.)

CM
*

find minor malachite on fracture surface + minor chalc.

CH 69-6-8-2

sq. of py + malachite (2 samples)

CH 69-6-8-3

heavily pyritized + magnetic float.

June 8th

Page 17

- o/c on 140° traverse from camp
few hundred feet past C869-6-8 1/2
- syenite (?) > 100' to east of line

- more like coarse-grained diorite

- magnetite concentrated in
1" circle with much micaceous
material (house) biotite tall (?)
+ linarite.

↑ this o/c to n.e. of lake which
is due west of lake through which
claim line runs. (plotted)

- o/c between above mentioned
lakes C869-6-8-4

⑤ *epidactization along fractures
- some epidote 1" thick
- slightly magnetic

6-8-4 displays grain
of ~~⊗~~ chalcopyrite

Radio sched AOK
R.S. in F.S.S. 1830 hrs (complete)

COLIN P. HARIVEL

STAKING

Fe₂O₃

FeO OH

FeHSO₃ OH Na₂D

Day (12) June 9th 1969

- staking from ^{#106 #107}
toward camp ⇒ finish 116, 117

Radio
5/100
OK

Day (13) June 10 1969
staking #118 - #127

Day (14) June 11 1969
staking #128 - #131

Day (15) June 12 1969
staking #132-137

Radio
5/100
OK
Radio
5/100
OK
Radio
5/100
OK

Day (16) June 13 1969
Staking #138-147

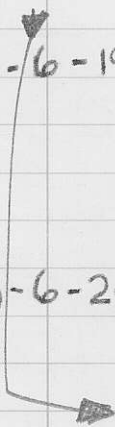
Day (17) June 14 1969

In Camp - rest day
maintenance & packing

③ GORDON'S SAMPLES ⇒

W.G.B. 69-6-19-1,2

W.G.B. 69-6-20-1,2



Day

June 19/1969

H1

GROUP

traverse from camp with
Gordon

- down claim-line to #100-#101

- from post 90-100° & around
south end of lake (see overlay)

⑥ - going east to s. end of
lake find coarse grained
syenite? with copper (chalc) +
py. → Dioxide?!!

- at south end of lake find
specularite, and Cu (malachite)

- around lake; more specularite.

Gordon

June 20 1969

traverse with Gordon to lake
as yesterday - around north side
of lake and thence east to
creek to other small elongate
lake - terrible going on walk
home to camp on north
side of swamp.

Rock Description:-

— See Gordon's samples.

June 21 1969

- Botting & analysis day.

(cloudy cool.) June 22 1969.

- traverse from camp to north side
of swamp.

- traverse to pt. A no %

(11) - [A] talus of sub-rounded sub-ang. x
ang. boulders

- one limestone (very gr. x + ls)

- epidotization + variety coarse + med.
gr. igneous rocks

- [B] higher than [A] CH-69-6-22-1

% with epid., + quartz, + magnetite

also note Cu ⇒ WGB 69-6-22-1

↓ in coarse-grained hornblende (?)

↓
bearing to camp 194°

altitude 3500 ft to be corrected at camp.

Feb 22 1969.

Page 2
this date

[B] major fracture direction
along which find epidote veins:
164/33E (slumping?)

quartz in this orientation from
thin (1/8") to 1" veins.

also, some quartz post epid.

[B'] down from B 200-300 SW
CH69-6-22-2
limonite goosha.



rock-type sample of
porphyritic syenite(?)

at B note: Cu (WGB) Cu in pods(?)
also chlorite associated

B' very similar Cu

at this point epidote fracture 144/39E

also 44/74E, 165/60E, 36/83E

to north, 100' - 223
43/59W

[C] veins of magnetite in
med. to coarse-grained syenite(?)

some epidote - not much
(plotted on overlay)

s/c this and previous areas (B etc)
all generally massive with occasional
intense fracturing (zones)

C + 200' north - very minor fractures
~160° direction

prominent ⇒ 42/66E & 148/45W

13

June 22 1969

this date

① 183° bearing to camp - ch. - par.

② Contact of previous country rock (22-3) with coarse-gr. equigranular diorite (?) - mafic is predominantly biotite with much clear plagi (?) with occasional K-feldspar twinned phen.

③ — on this % observe many x cutting relations of aplite, feldspathic and med. grained syenite + granitic dykes + veins also large (8") barren qtz veins, some off-setting of veins

coarse-gr. int.

Ch 69-6-22-4



This coarse-gr. is similar to intrusive encountered on 141 GROUP when working from Tchenth

④ 200-300' towards ck (2310-315')

⑤ but % where epidote + qtz, prominent strikes 143/60E (this coincident with fracture alteration of f-spars (generally) in this coarse-gr. equigranular diorite (?))
— pronounced foliation this direction

June 22 1969 Page ④
this date

(E) Cu occurrences with epidote in
fractures comparable to 143/60E

WAB-69-6-22-4, 5, 6

↓ ^{in situ}
angular float.

June 24 1969

traverse to Post for 164
165

- of on $195^{\circ}-15^{\circ}$ traverse
from camp

- hit small(?) zone of 120°
trending, porphyritic (plag(?))
pink (superficial weathering(?))
rock which is heavily
fractured: contains much
epidote & some copper

CH69-6-24-1

'gully' (actually lineament)
trends similarly ($120^{\circ} \pm$)
and separates highly
fractured from blocky
fracturing of coarse(?) grains
nasose traverse \downarrow no. (type A) med. fine

Stakes #164, #165, #166, #166

June 25

 1969

Prospecting about Boudrault's claims.

Silt: WGB #1 (no flag,

1000' (guess) from confluence
with Ck which flows from (HOL)

Ck - 6' w, 8"-1" deep

grain sized float \rightarrow pH < 6.0

Silt good ~~in~~ quality: semi-ate
sand and fines, with pebbles

- near prominent bend,

- hereafter trends north ||

WGB #2 1000' upstream &

in similar environment to #1

WGB #3 1000' upstream in

similar environment to #1

traverse from WGB #3 on 300° for
7000' Thence $\approx 295^\circ \rightarrow 290^\circ$

on this traverse took silt (fines
with med. gr. sand) in small
stream (1' x 3") in delta-like
area entering swamp. For
position see overlay.

JUNE 26/69

18⁰⁰ / 18³⁰

WGB 5

1000' FT DOWN FROM
X-1

DES: CREEK - 6' WIDE
6" → 1' DEEP, MODERATE
FLOW, MUCH FLOAT,
MUCH CO-ALLOVIUM
CONTAIN. FINE & COARSE
SAND FROM CENTER
OF STREAM

WGB 6

1000' distr. from
prev. in similar environment.

WGB-7

- 500' downstream in
dr. which flows from lake

WGB-8

1000' dist. from 7

9 1000' " " 8

10 " " "

(4 at dam like crossing)

June 26 1969

500' downstream from
#7 on east side of ch.
sequence of limestone
shale, sandstone & thinly
interbedded carbonaceous
beds & sandstone.

CH 69-6-26-1

no really obvious good
fossils
bedding 135/805

much calcite-filled tension
fractures. & " " fractures

-26-2

↓

conglomeratic sandstone to
pebble conglomerate. This set
of % interbedded limy sands,
carbonaceous shales (GORDON'S SANDS)
and sandstones.