

WEST COAST
SOIL SAMPLE
GRID - N-S
INTERVAL = 1000'
E-W INTERVAL
= 100' (GRIDS
AT LEAST AS
LARGE AS
SHOWN.)

640N

630N

620N

610N

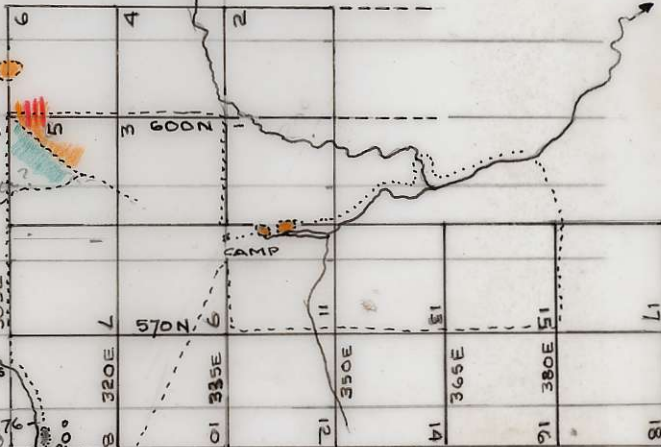
600N

590N

580N

570N

560N



WEST COAST CLAIMS
STAKED JULY 12 /69,
THERE MAYBE MORE
CLAIMS THAN SHOWN



wgb.

FAR
93N

671295

BC 2054:23