

PRINTED ON RECYCLED PAPER

60W 56W 52W 48W 44W 40W 36W 32W 28W 24W 20W 16W 12W 8W 4W

30N
26N
22N
18N
14N
10N
6N
2N

JW-86

grey andesite

darker andesite

JW-85

JW-84

Jean, J.W.
93N/2 671273

40W

36W

32W

28W

24W

20W

16W

12W

08W

04W/30N

26N

22N

18N

grey
black
volc.grey andesite
tending to rhyolitesuspect transform
from andesite to rhyolite.

10N

06N

02N

grey andesite same py

andesite greener
some qtzandesite with qtz veins
some epidote also py

PRINTED ON RECYCLED PAPER 100% W

30N 40E

44E

U-6 48E

52E

U-7

56E

60E-8

64E

68E

26N

U-12

22N

□ granite

dark fully fault?

granite Cu in
Some fractures
fractures appear
to strike W

U-11

18N

⇔ dark andesite
phenocrysts

14N grey andesite

grey andesite
with ps

10N

06N

02N

30N 200 09E 08E 12E 16E 20E 24E 28E 32E 36E

26N

granite (?)

granite pink and altered.
drip up stream

22N

18N

andesite

andesite

basic, some py.

grey andesite

tending to field porph.

small cc of felds. porph.
grey andesite
dark phenocrysts
some py and felds

andesite

14N

andesite
andesite

andesite

andesite, some dark pheno.
andesite, some phenocrysts
dark andesite
small black phenoc.
py and chalc on fractures

black, near gabbro
some py
andesite

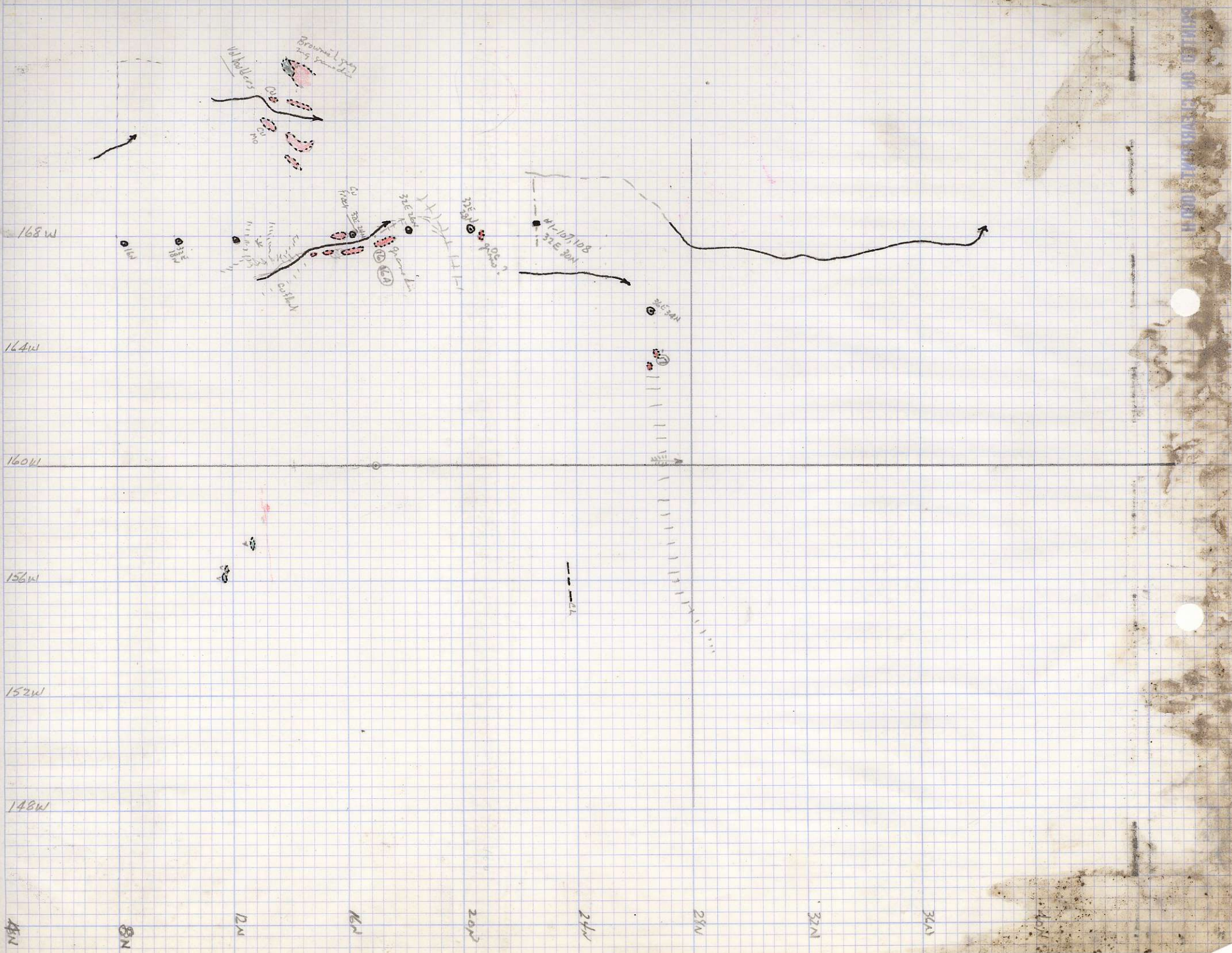
andesite, some py.

10N

06N

02N

phyolitic
andesite



168W

164W

160W

156W

152W

148W

48N

8N

20N

40N

60N

80N

100N

120N

140N

W. Holes
Brown Lagoon

4-107103
W. Holes
32534N

32534N

32534N

32534N

32534N

32534N

32534N

32534N

40W 42N

40N

(12)

36W

26W

(13)

34W



41-36W 117-118

dark tg
little py

drunk
egg + py

small
skull

40W

44W

40W
24W

36W

32W

28N

34N

30N

26

22

168

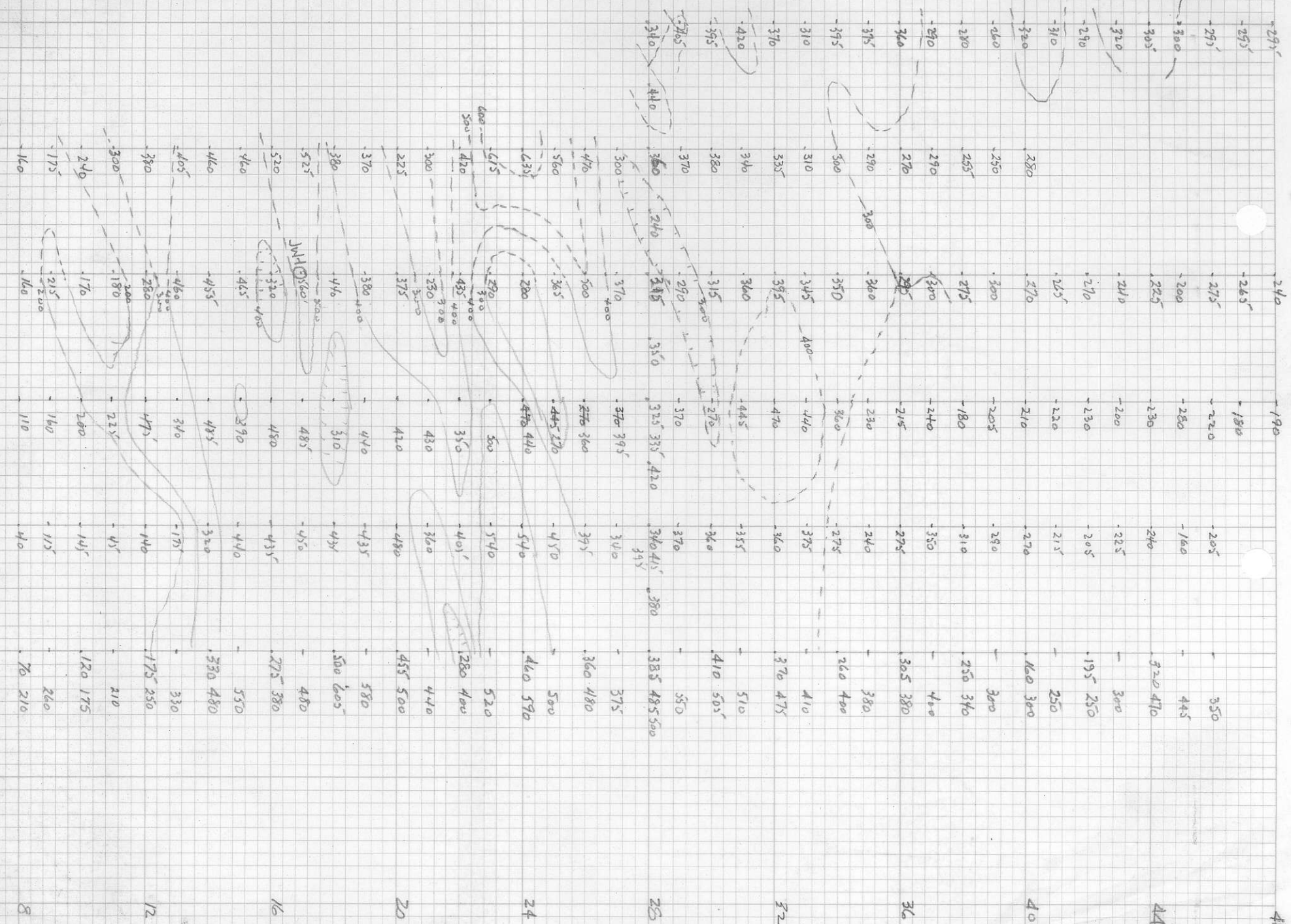
164

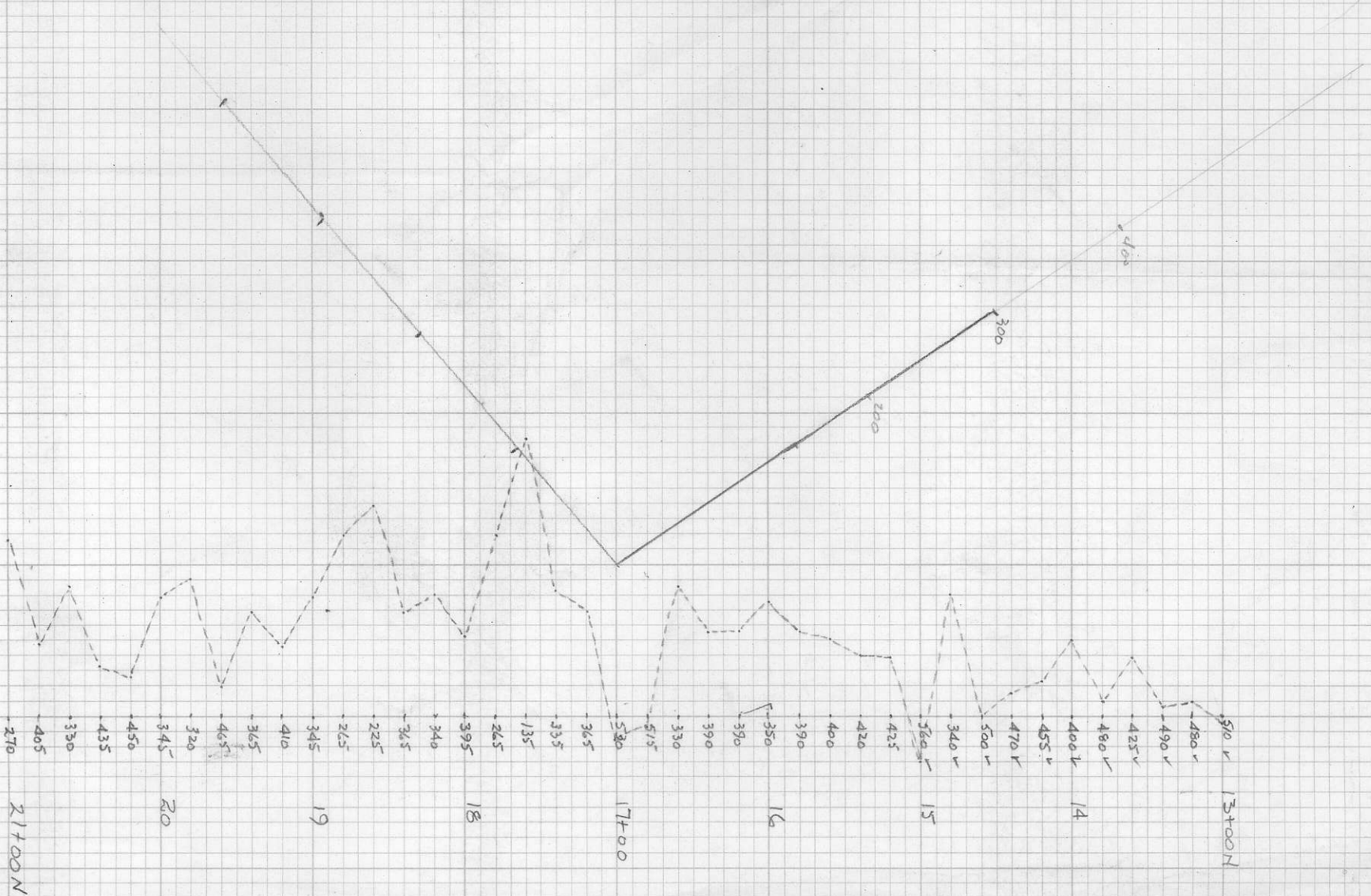
160

152

148

HOODI TИPPAEЛIЗ MO OETИMPE





ИЗМЕРЕНИЯ СДЕЛАНЫ ПО ГОРИЗОНТАЛИ

40E
2.1W

168W

164W

160W

156W

152W

148W

310
320
360
375
395
310
370
420
395
405
325

280
250
255
290
270
290
320
310
335
340
380
370
355
360
470
360
420
211
425
370
380
525
550
460
460
405
385
300
240
175
160

420
300
275
300
295
360
350
345
395
360
315
290
325
550
660
365
280
270
435
230
375
380
410
460
455
460
230
190
170
215
160

10
36
3

24

20

16

12

106

104

103

105

JW 102

JW 101

BL 28N

WVE 2W

WVE 2W

WVE 2W

WVE 1W

WVE 1W

446

700

200

560 H

350 Cu

Bottom slope

40E 20N

steep slope

relatively

WVE 1W

WVE 1W

WVE 1W

WVE 1W

minor gully

WVE 1W

WVE 1W

WVE 1W



- ① 152 W 16 N - 20' W of Δ oc m-cg pinkish granodior - minor rare specks chloco - slightly magnetic.
- ② 152 W 13+50 N - Same rounded boulders dark to apple green vol. Fract. Analcite? specks + minor fact fill py + chloco?
- ③ 152 W 9+50 N - Dark grey to black fg pepper + salt vol - small white fld phono porph, fact, minor py.
- ④ 156 W 11+80 N - Dark grey fg hornblende porph vol - massive non-mag-
- ⑤ 156 W - Dark green or very dark grey fg basaltic? vol - fact - carbonate
- ⑥ - Pinkish m-cg granodiorite - biotite - fairly strongly magnetic
- ⑦ - Pinkish c.g. monzonite? - very low profing - biotite - ^{roughly} weak magnetic. fact at 75°/5 70°
Along or to NE increase in py to ⑥
- ⑧ Showing - m-cg pinkish granodior - 30% mafic - chlorite hornblende - Gyr + little Mo own fact + disseminated. non vol where min variable to fairly strong mag where massive + fresher - joint set at N10E dip 60° W to vert. incl mag where

| | | | |
|---|---------|-------|----------------|
| ② | N 10° E | 20° E | 95° + sulphide |
| ③ | 270° | Vert. | |
- ⑨ - Black fg hornblende + fld por vols x and gully.
- ⑩ - m-cg pinkish granodior - many minor chloco on fact. Relatively strong mag.

