

671172

CRESCENT 1-6

Feb, 1986

Henry Awmack

Andrew

Jean Pautler

Bill Howell

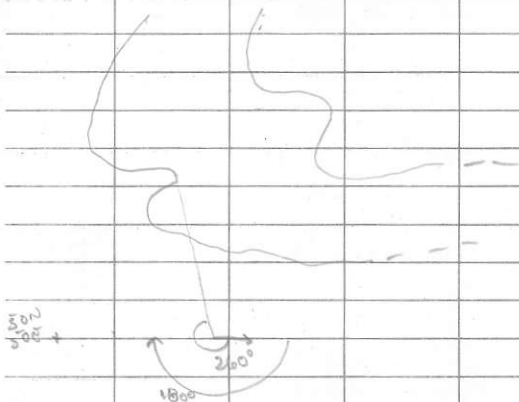
5/II/86

CRESCENT

H.A.

FEB '86

Side shot from 46+61 N 50+00 E

Pink ribbons (DDH 4?) \angle HOR = $206^{\circ} 07'$ BS: $180^{\circ} 00'$ on 50N 50ESide shot on peninsula tip in Crescent
Inlet $260^{\circ} 07'$ BS 180° on 50N 50EGrid runs ~~N 005~~⁰E at due North-Southfor a magnetic declination of 26°

The initial point was designated 50+00N

50+00E; a nail driven in a 4' spruce
stump 10 meters west of Metric Main.

4450

FEB 5

Andrew

BASELINE

4563 N

- edge of logging

4550 N

- into timber

4424 N

STATION

208+25 (ROAD ✓
LAYOUT?)

4260 N

- middle of stream
creek

4250 N

- big change

- traverse up
creek to saddle

4128 N

- old station

214° is now bearing

100W + 0705

4070

- middle of shoulder

- continue 214° to 4050

) x (

n

4050

- bearing change - due
north south.

3964

- post - blazed painted

swamp

FC # 29A

3917

- center of stream etc.

nameless draw

3900

END OF B.L.

FEB 6

BL. 100 M TO ST 3800N

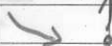
1

STRIP 38 FC # 29

3800N

GOING WEST

W → OK



*

"

4880E LINEAR CK

4743E ROAD STATION?

15+13

4375E *put in* FOREST IN BLUFF

750W + 200N

-blazed line.

4300E END OF LINE 38

GOING EAST

BACK TO BASELINE

AT 5000E 3800N

MANAGED ONLY 1 CHAIN WITH NO SLOPE CORRECTION

∴ EASTERMOST STATION

OF STRIP 3800N IS

5040E DUE TO BLUFFS.

②

STRIP 3900 / 5000E

GOING EAST

5100E - END OF LINE

GOING WEST -

4956 - in unnamed den

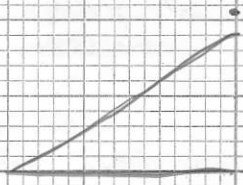
4930 - linear creek

4457 - unnamed ch.

4300 - END OF STRIP 3900

3850BL

UK. SULPHIDE



FEB 6

③ STRIP 4000N

- start on B.L. + going east

- EOL AT 4000N 5140E

- hit lots of open rock
10-15m high.

④ STRIP 4100N

- start on B.L. going east

EOL AT 4100N 5250E

- evidence of old cut
stop at 5200E on
strip 4100N

FEB 7

STRIP 4400N GOING WEST

4400 5000 - B.L.

4950 ✓

4900 ✓

4850 ✓

4800 ✓

4750 ✓

4735 height of land

4700 ✓

4650 ✓

4600 ✓

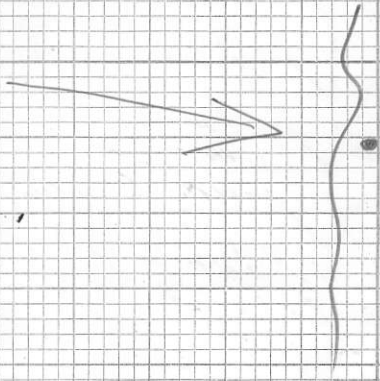
4550 ✓

4500 ✓

4450 ✓

4400 ✓

4350 ✓



40.50
3500

Feb 7

STRIP 4400N WEST CONT

4360 ✓

4280 - creek

4250 ✓

4200 ✓ E.O.L.

STRIP 45 GOING WEST

4500N 5000E B.L

4950 ✓

4900 ✓

4855E - old cut line

4850 ✓

4800 ✓

4750 ✓

4710 - height of land

4700 ✓

4690 300N + 00E OLD STATION

4650 ✓

4600 ✓

4550 ✓

4540 400N + 100W OLD STATION

4500 ✓

4450 ✓

4400 ✓

4370 - creek

FEB 7

STRIP 4500 WEST CONT.

4350 ✓

4300 ✓

4290 - 600N + 300W OLD PICKET.

4225E E.O.L.

TO STEEP (BLUFF)

STRIP 4600N WEST

5000E BL.

4950 ✓

4900E ✓

4850E - also edge of
logging

FEB 9

STRIP 4800N - WEST

5000E B.L.

4950 ✓

4900 ✓

4850 ✓ -

4820 edge of logging

4800 ✓ - very bluffy

4765 unnamed draw (creek)

4750 ✓

4735 old cut line 500N + 250E

4710 creek by 0250

4700 ✓

4650 ✓

4600 ✓

4558 old cut line 600N 150E

4550 ✓

4500 ✓

4450 ✓

4440 + 2m EAST DOLL SITE
BRG 020 DIP 47°

4400 ✓

4350 ✓

5800

ALSO HEIGHT OF LAND

BASELINE RUNS OVER DRILL SITE

FEB 8

4860 N cont (WBS) BLAZED
4320 OLD CUT LINE 800N ? E
4300 - in unnamed rd

4250 ✓
4240 - dips into gully
∴ E.O.L.

STRIP 4600

4850 ✓

4800 ✓ } 40°

4750 ✓

4720 old line ?

4700 ✓

4650 ✓

} CAMP

4600 ✓

4585 cut line, blazed 030°

4550 ✓

4500 ✓

4450 ✓

4400 ✓

4350 ✓

+

4330 BLAZED LINE 025?
4300 ✓ FEB 8
700N+150W

4250 ✓

4241 ✓

4200 ✓

030°
✓
creek in deep gully

- between STRIPS 47+48
DRILL SITE - 2 HOLES

STRIP 49 WEST

SOUND B.L

4950 ✓

4900 ✓

4850 ✓

4800 ✓

4750 ✓ EDGE OF LOGGING

4700 ✓

4650 ✓

4600 ✓

4550 ✓

4510 ✓ ROCK SAMPLE 84337
15m CLIFF

4500 ✓

4450 ✓

4400 ✓

4350 ✓

4332 cut line

*
BLAZED LINE →

2
2

4300 ✓

4250 ✓

4200 E.O.L.

LINE 50 WEST

5000 B.L

4950 ✓

4900 ✓

4850 ✓

4800 ✓

4750 ✓

4700 ✓

4650 ✓

4625 ✓

4600 ✓

4580 ✓

4550 ✓

4530 ✓

4500 ✓

* - starting at 4800E
terrain is
extremely rough.
includes
and heavy bluffs
windfall
for 100 m.

CLIFFS {

edge of logging

CLIFFS {

edge of logging

CLIFFS {

4450 ✓

4400 ✓

4350 ✓

4300 ✓

4250 ✓

4200

E.O.L.

sub-alpine
bush.

STRIP 4300 WEST.

5000 BL

4950 ✓

4945

4900 ✓

4850 ✓

4800 ✓

4750 ✓

4720

4700 ✓

4650 ✓

4600 ✓

4550 ✓

4500 ✓

4480

4450 ✓

4400 ✓

4385

4350 ✓

- layout for logging road.

crest of ridge.

creek 180°
400N 350W CUT LINE

cut line

5057
5122

4300 ROAD STATION 218+73

4250 ✓

4245

creek crossing 230°

4200

E.O.L. ✓

STRIP 4200 WEST

5000 B.L.

4950

✓

4900

✓

4850

✓

4800

✓

4770

height of land.

4750

✓

4700

✓

4650

small creek @ 210°

4600

✓

4550

✓

4500

blue flagged logging boundary.

4477 - road location + creek @ 220°

4450 ✓

4400 ✓

4350 ✓

4300 ✓

4250

4215 ROAD STATION 8+70

4200 E.O.L. RUNS AT ABOUT 110°

4195 creek 220°

4190N + 4190E FC15

- logging
boundary
post

- approx 25 m due east of
4250 is OETON
cut line from old
survey

4100 WEST

5000 BL

4950 ✓

4945

4900 ✓

road station 211+65

4850 ✓

4800 ✓

4750 ✓

4700 ✓

4660

4650 ✓

4615

4600

logging road layout

E.O.L.

4550

4500

4450

4400

4350

CRESCENT 1-6

Jean Pautler

Feb 3 - ¹⁸~~18~~/86

Feb 4/86



Branch 82 $\hat{=}$ 19.5 km
on Metric main

km 22. Helicopter landing
pass M130 - to lake site

- Just past Jct M140 on
Metric main

Red Seam
260N + 600E

86-1-1

- 50m twigs Linear Ck
from end of little spur

- semirad
- float of g. on material
1.5cm wide; g. w. density,
host \rightarrow A-D? fragmental??
1 piece \rightarrow f.b.t.

86-1-2 M140

391m going down
2 pieces of suggy g float
3cm wide in host
chl melanogabro or A frag.

501m.

186-D-3

g bx coating

chl A? frags. coarse-med xline gtz

769m

186-S-4

vns \approx 2mm wide

of soft dt greenish matrix
cutting pyritic A? +uff?
with lots py near
vns and along fractures

903m

to 50-150N / 50E

elev 840'

official

Elev at sea level at
end of day 220m

NB

Red Seam drillhole
from ck jet go 50m
upstream to trench

Feb 5/86



Map M140 Rd = m141 on Rd map?

Start 0m at 50+50N/50E

- otc of brownish to buff
weath A. f. p. +uff bt
chloritic OR fg. Di 1%py

10m - 12m otc of A+uff bt lt greenish
col, fine silicious + thin stringers
with some drusy z, 3mm wide.

(irreg but gen. trend 185°/vert
→ 86-J-5 tr. py in host,

25-27m - pyritic A. lt green otc
v.f.s.

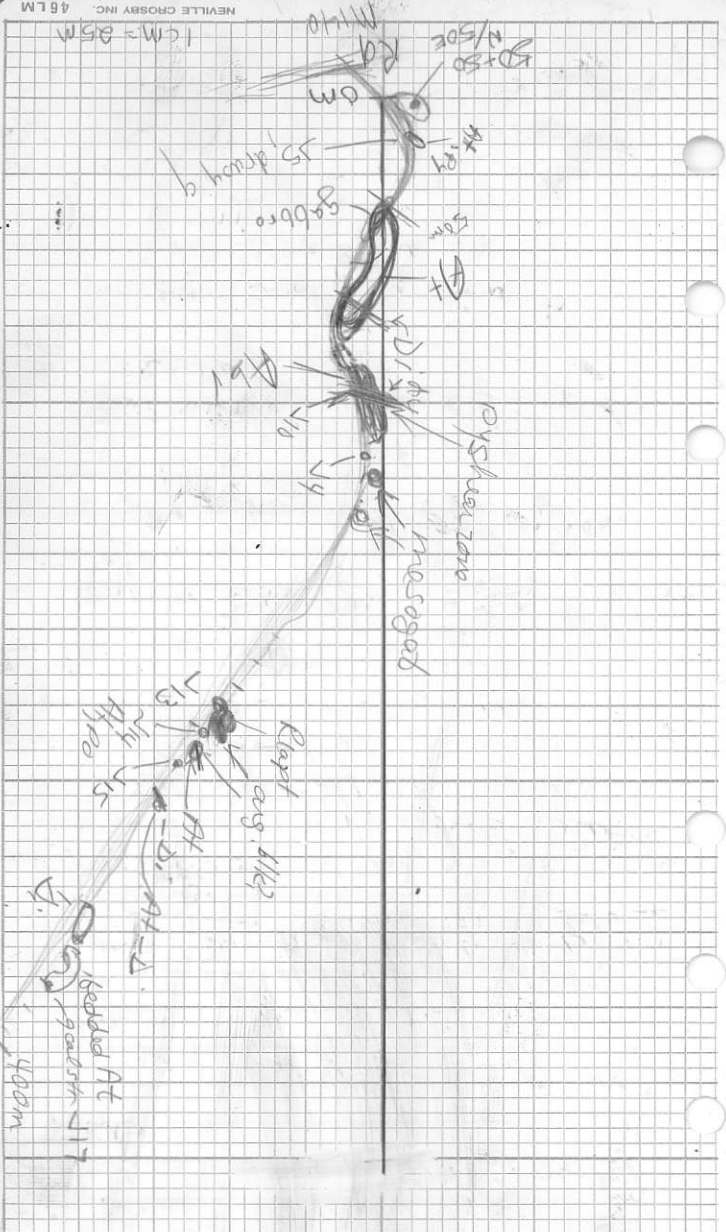
26m - 86-J-6 s-silicified lap. t.
bt

A-Di frags, 1-2% py, from
20x25cm angular float
beneath otc (possibly from
roadbed)

27m cut by fp Diaby
trend S/85W
width 15m

28.5-29m back into lt gr. py. A.

35m - r. bl. arg. ^{py.} trend 153°/30°W
overlain by lt green s.s.



- fine ^{few mm} creamy white
thin cuts arg 228° / steep E
ARG

46m - dy - Di f. Py trend $\approx 200^\circ$
ARG

56m - 180° contact with
mg Di or MESOGABBRIO

53m 86-57 g vns up to 2.5 cm
wide cutting Mesogabbro
 190° / $65-70^\circ$ W - most
common in 65 cm wide zone
minor shear zone

54m - contact with Di dy with
pyritic blotches up to 2 cm
wide

55m - fragmental ^(At-lapt) ~~Di~~ }
or

→ all with purple-ish
v.v. minor g - wte cal patches
str.

At-lapt fragmental continues to of

least 83m

81m - g-cal vns up to 2 cm wide
irreg. discont in Alapt - trend
 $\approx 200^\circ$ - 86-58

83m ? under continuous
etc but ? interbedded At, lapt
possible di dy at 83m with
fine po.

abundant fracture surfaces
@ 150°/vert.

86-1-9 88m - r. Br B, clayey
sand, fine pebbles, few oys,

CORNER below At etc, fractured.

20m Ab At, Alapt + R. frags

~~Alapt~~ - merge by along
80° fracture.

frags as large as 1m x 2m

130m

86-1-10 Δ 3% up as blebs +
chisen in felsic lap + dx
in Ab, py along fractures

13m - 2m wide ^{fg} di dy trend 192°/vert

13m ~~shear zone~~ r. shear zone 35cm wide
related to R. dy. - 86-1-11

145m.

150m - 86-J-4

156-7m otc of Mesogabbro?

*169m - 2.5m otc of mesogabbro? jointed at W. end and W. folded pyritic in jointed area

247m -

86-J-13 ^{SOIL} r. Br B, clayey sand, few pebbles, few orgs, assorted frags of arg, volc

- beside ^{3m^{100%}} otc of R volc possibly lapt. frags are v. rounded, often spherical and surrounded by halo.

↳ is underlain by gray-bl and bl interbedded ARG, trend 110°/W

254m ^{v. sm} otc of atgy At. with
of dissem opo - 86-J-14

260m - 265m At otc buff
- brownish weath - Yakoun
w. sheared contact with
Al Arg which overlies above
it.

275m - SOIL B6-J-15 = dk rusty Br B,
m. sandy, few orgs, in area of
banded At otc

276m - bedded At otc
185°/35W - reolites
up to 1cm diam,
lt. gnish ~~sp.~~ - br. cd,
w. m. po. in areas.

306-7m otc of Di dy dk gr
cuts trend 35°/vert.

307m - 8 } At - lapt? s. weath,
→ OR Di - leucogabbro

340m¹ otc of

346m - 356m otc

Di / small Diab dy trend 29°/Di
cal blebs and unlets

360m = lgt otc in quarry

log otc

~~A or A+~~ - bedded tuffs A-D

appears to be 30 cm wide r. sil,

layer in ~~A~~ → looks like

bedding → ^{massive} bedded tuffs ✓
bedding variable

contains 2-3% po, in places s. sil

86-J-16

same otc

minor aspy?

375m

86-J-17

g-cal str

1-3mm wide cutting tuffs

S-SE trend - along joints.

E of otc

404m

Soil 86-J-18

- fine sandy w clayey or B, few oys, no otc

422m

86-J-3

443m -

otc in landing to NE - melanogabbro mg with aug phenos. ? R/S sampled

472m -

logs across Rd.

476m - [86-119] 50%
rusty Or - med r. B r, B
fine sand to m-silt
mod oys, some from
beneath bank - silty.

491m - ^{are} beds of At or P. g
melanogabro

510m ^{is} of Atuffs interbedded

(with Ap, vesic and vug, chl
lining vug,
minor Diab dys.

grades into v. chl var. - may be

sub volc -> Di-fg melanogabro??
with cal blebs + str.

535m flag - J2?

571m - 60cm wide Diab
dy. with blotchy Pg
trend 24°/vert. must
cal str along wayrd.

585m

587m - A bedded tuffs?
to 593m

595m - w. bedded At? bld
cal, py along frag
margins v. minor ep in str.

595m - 599m etc of
↓ Atuffs + p.t. minor lapt,?
etc of chl.

605m waterfall

615m bedding @ 011° - appears to
be bedded tuffs but of Di-gabbro?

Go to Rd end

900m

895m - R lapt minor Aggl
frag. alt weath
gy. bl gy. col. wte
minor w. bl. and w. cl a
in frags + host many
frags Andesitic more
Aggl

890m - 86-520 bleed, w sil

R lapt-agg. ← to 882m

872m - same but w/cla
etc

860m E of etc

848m - felsic lapt.

} - fract 33° w 80°

840m

At-Di Gab.
colons

waterfall

At, bedded

Di mel
gab

Diab dy, PY

At AP, vesicall
interbedded

At gabbro

logs

At BP - Di Gabbro

J3

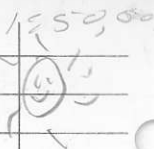
J18

400m

90

Feb 6/86

Run line



Feb 7/86

Run lines

L 48N twds lake

@ 3+50E - 3m to S off
from kink @
break in slope
≈ 51+50

@ 4+00E - ≈ 4m off

L 47N twds lake

Cross Rd @ 47N/50+72E
to w. edge of Rd.

Cross ck @ 47N/52+95E

Feb 8/85 Run lines



~~LY6N~~ two ds lk.

Cross ck at 52+15E

B33 ≈ 50m from old
dull camp along trail to
drill set up 3+4. 9+2
WA. → o/c 8" across

Cross 130° lineament @
45+40 E on 46N line.

- 10m N of Bema 45, 69... is
44+70 ~~E~~ / 46N

- 46N / 44+60E ~~✓~~ - CROSS
old BL at 00E / 596N

- marked 46N / 44+25E ✓

Feb 9/86



Find Trench #1 in Red Seam
Sample Tr 1 and surrounding
area - cat trail

- Tr is 23m 083° from DDH 6
→ Cat trail is 33m 283° from
DDH 6
trend of cat trail is 10°

along cat trail
86-5-21 float 10 pieces of
gy. up to 1cm wide
commonly drusy, possible
tr. sulfides (gy + sol)
largest piece 1cm x 6cm x 5cm
- collected over 8m

86-5-22 fine gr str cutting dk
gy A.H.? host - looks
fractured + rehealed
NUS 3 pieces - on
cat trail @ 5m down
from 083° line 32° from
DDH 6

86-5-23 30m @ 90° from J21 on
E side of cat trail

86-124 soil rusty, B.B.
Tr 1 sandy, flow

86-125 g-carb str cutting
A+ ? v. alt'd. - broken
etc along N side of ck

86-126 - org fl on bank
beneath 125 - v. pyritic
bleached by A+

*Start at colour anomaly in Tr 1

86-127 - 30" sample - lim. on
5lb rusty gy green volc. minor
tr. v. fine g str.
NB r. contact has an

158/46^w contact with non A.
volc.

86-128 g vn up to 1.5 cm wide.
~ 1 lb sample of 8°/85E in r. gunged up
a. volc. @ locn of 84353 old sample

86-129 58cm same as 128 except
5lb more g str. - estimate

86 J30 ^{up to} 2.5 cm wide of vn.
tend as in 28.
1 lb sample

86 J31 46cm = same as 29.
1 lb

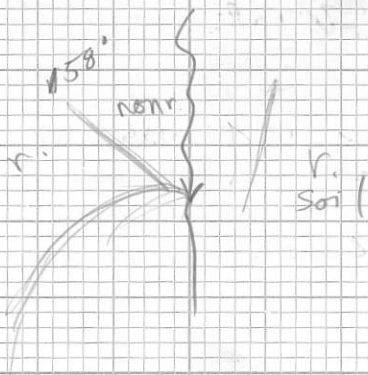
86 J32 bl Mn stained surfaces
142 lb in less grungy weath
gr. volc than in J31 +
J29. \approx 20cm wide
with gr str up to 5mm wide

86 J33R*
1 lb wide. g vn up to 4.2 cm
same trend.

J34R Or. r. w-mod mn st
1 lb 28cm wide fractured
less grungy than
J29.

J35R*
1 lb up to 1 cm wide of vn

J36R Or Br a A+?
41 cm wide some
s. sil host v. narrow
< 1 mm of str



J37R 5cm wide zone
 with ³⁻⁵ ~~few~~ mm
 wide g UN. and
 v. lim a 'gummy'
 material on either
 side

J38R 1m wide

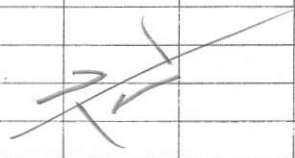
~~J39R~~ w. fract w. lim
 along fract more lim
 on either edge proximal
 to g UNs

86-J 39

g vn trend

(1016) \pm 00 $7/75^{\circ}$ E to 9 cm
width (5.9 cm) etc

drusy in centre of 3
separate phases within
the 10cm wide g.
vn zone.



Feb 10/86



86-140E rock - g str

vuggy g cutting
s-c lim. volc?? minor

As stain; chl along
many margins. 44m^N from
Linear Ck and 50m
along ck to ^{BL}41+50E

Colinear Ck showing

OLD Samples

83 67330, 1, 2

- lge etc of faulted Kurga

86-1-41 rk. main g. vein

1cm to 2.5cm wide

collected along vein

for 8m, rusty, work

a? ± w. py ± w. aspy??

fault → trend $\approx 235^\circ$ l. drusy

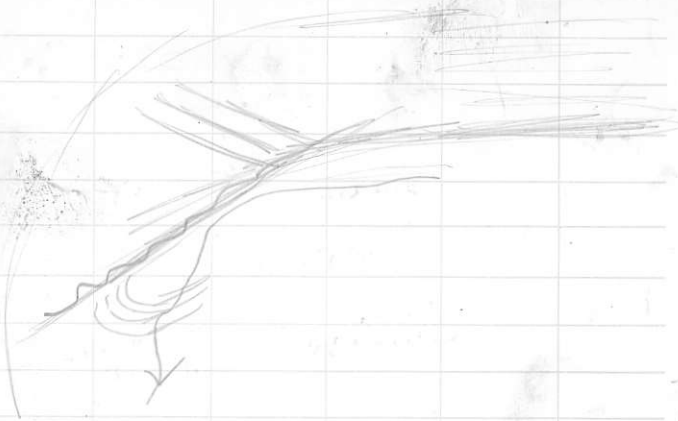
↓
rt. lateral plane along in
Kurga and l. follows
bedding

J42 same in as J41 N-
extent collected over
along 3m of vein 2-3cm
wide, v. drusy + tend. $250^{\circ}/40^{\circ}E$
follows bedding.

J44a v. v. drusy g with
open space 0.8m from
~~N.~~ end (disappears in
muck, windfall) of vein
exposure, 3.5 m
wide.

J43a 3 g vns that cut
off main vein @ 275°
and crosscut
bedding for 60-70cm
then parallel bedding
width up to 1cm, drusy

J45a few g strings that
|| bedding 1-3m wide.



J46 - 3m section across
Kurga, S end, across s. sheared,
faulted, dog folded Kurga.

J47 - 3m section across
Kurga, centre, incl 3-4 sm gyps

J48 - 1m section across
Kurga at N end
of exp, incl 1cm
w. of un

L36N L47+50E/37+80N -
Ck jet - J50 sample
of sil. v. py beds in
Kunga arg. 45m down
ck from Colinear
showing (>10,000)

J51 - 85m downstream
from showing, on S
side of ck bent, pyritic
and w-m silicious beds.
in Kunga. ~~Dyke~~
Dyke on N side

J52 old sample
B4757 R dyke
with py 2m exposure
possibly 3m wide??
just 8m downstream
of B-46

Feb 11 / 86



finish M-140

Rk - waterfall 605m

Ddy. - 5m \pm 20°

615 m \pm 0 m

86-J53

cal-carb vein, minor drusy

g 30°/60°W up to 2cm wide with cracked margins

86-J54

\pm 5 m up rd from J53

g, minor carb on up to 3cm wide - breaks into several smaller veins up to 1cm wide. Main trend 195°/65°W

- str. perpendicular to parts of vein, chl along margins, minor drusy - cutting magic dykes = 1 vein - fractured area, abundant dykes.

J55

→ Rd. ^{or sil D.} dy. with fine po

27m magic dys

bedded ~~dy~~ frag. r. fractures

34m Rd fp. dy with dissem po
with bl.-gy cal along margin

J56 with po
spal...
P4, fine

J55

37m Δ + with fract cal vms
~~contact~~
39m end of otc

52m start of otc, - Dt, lap

v. fract Dt, or Rdt with
fine p.

Δ - lap +
[J57] - q-carb vms 2-4mm
wide
trend $\approx 205^\circ$ from
52 and 58m locn's

59m * contact with Hb Di
with cal blebs, and
cal in fract, fsp phenos.

80m less p. - more prob.,
py blebs

99m - ~~contact~~ - fault? or
major fract. surf - cal
? ? green band? ?

108m Di-A still [J58] q-pl-carb? vms
up to 3 cm wide over
45 cm wide zone

109m end of otc

132m otc of R-D-R

143m contact with Gidi mg

dy trend $45^{\circ}E$
 60°
end of otc

158m otc of hybrid D-R? ~~but?~~

hydrofused. - banded
felsic / interbed layers
 $160^{\circ}/60^{\circ}W$

165m Diab dy

185m - 159 - sil R lap? + or
as str and around circular
nodules. sph R? ? sil

✓ Cont to end.

- areas of fract, rusty,
throughout otc.

END of M140

M130

0m - jct with Metric main
landings - in landing on N. side - small
etc of vesic A.

30m - etc of stA ang p., cal str,
some CoPa, PY

→ 120m Stank 160 Soil
Or Br B,
Sandy, at corner, noddy

125m sm etc A ang p

160m etc of ang p mixed
with bedded gy-buff-
ble Kung a ang

170m 161 Soil
Or Br B

180m

193m - R. fl. in landing on W
side.

194m etc of ~~194~~ green ss, sts,
bedding features, shingling,

200m

→ cross baseline

249m [J62] or Br B, mod oys.

298m [J63] or Br B few oys.

365m [J64] " " " " "
above hill

415m [J65] or Br B few oys

419m otc of Kungu bl-gy
arg. w. py beds
bedding N-20°/10-15°W

↓
430m

475m - gully

487m [J66] Or Br B lots oys

538m [J67] or Br B, mod oys

536 - 539m - otc Kungu
gy-bl arg.

545m sm folded otc, gully Kungu
banded arg.

565m sm otc Kungu arg-banded

580m - start of lge otc in quarry

581m - ck
etc - Kunga banded ag 60%N folded
605m - muckpile in centre of
quarry

1/4

- A dycs + sills cutting Kunga,
faulting - resulting in
wedges of Kunga in di
- faults ① - R.L. 300° cutting di
② R.L. 40°

fault cutting Kunga 30°

on S side of quarry some
R dycs and fault wedges
of Kunga.

[J68] fractured, pyritic
sections of Kunga

[J69] pyritic ^{gr} A dyc.

Di, Kunga

633m end of quarry
windfall across Rd.

750m [J70] Soil M^or Br B, few
orgs.

800m etc. of Di, mucked up
Kunga

826m [J71] m. r. Br B. mod
orgs.

850m 50N/53+50E EOL

874m [J72] ^{med r.} ~~Br~~ Br B
few eggs.

944m [J73] med r Br B
few eggs.

945m L49N cross

980m - etc? in Rd ^{minor} Kuga in
etc of A-Di?

984m - cross Linear Ck.

1054 [J74] w r^m Br B, med eggs.

1066 ^{L48N} 54+15E on rd.

1124m [J75] v. w. r. Br B, few
eggs

1168m [J76] v. w. r. Br B " "

1195m end of rd.

[J77] 3m to S of
Linear Ck. on rd.

Feb 12/86



L 40N

- Cross colinear ck? @
49+70N

- Cross small ck 49+35N

- Survey post 213+35
@ 48+66E, and
3m to N of line

- cut boundary @ 48+25E

- 450w + 100N @ old line
@ 47+55E / 40+3mN
711+48?

- 11+10' Rd Sta @ 45+39E
on 40N line

L 41N

Survey post 10+45 @
L 41N / 44+13E

L 41N / 42E → 20m from
old line 500N / 700W
and few m. to S
of line on a ck.

Feb 13/86



Map Rds on Wilson Bay
side (TASU 120)

0m from jct om - ck

- gy Kunga 1st-Ma overlies
Karmutsen A, with cal str.
contact $137^{\circ}/70^{\circ}N$

- overlain[?] by pyritic Di.
near west contact with L. m. u.

17m unit -
point in cal stringered lt gy
limy unit possibly

① orig q Hb p. Hb \rightarrow sp. cell.
ser a, w py \leftarrow [578]

21-22m v. fractured, w r.
mode ser a.

22m \rightarrow Sp dy

22.5m Hb p? a.

②
25m

36m etc of Hb G.D. or O.D.
prob fresh equiv of ②

[579] Soil m. Br. vwr., mod oys

39m Diab dy with py lens

[580] - q vns up to 0.5mm
cutting w/ edge of py dy.

030% str + dy
steep.

① Dth P - variable composition,
 minor g str as in [J80]

59m

↓
 65m

Same cracked Dthp
 with x cutting g str

74

79-81m same w more a

[J81] 65-81m composite
 of above

[J82] Soil Mt. Bw rucky B
 lots orgs -

117m otc P. Dthp to Hb GDi -
 ① Di with g str [J83]

119m grades or contact (50°)
 with Di dy 1/4 m wide

122m 50° contact with above

↓
 145m Diab dy @ 143° 50°

152m [J84] r med B, med
 orgs

154m - 6 otc Diab dy Py.

160 → 183 Diab for 3m then

Note in quarry - cradled
pyritic ① g. cal. sr.

163m - 185 pyritic
soil D or w. sil R - py

cubes + dissem from
arg float in quarry
appears to be from
above main quarry
etc.

228m 186 soil r. orb. B
mod oys

235m - 3m otc of R-Rd, fine
gy w. pyritic

238m - ck

266m quarry Diab with
↓ dys of GDi? fig. and
276m wedges of v. green
Kuzg? ?

286m Rd jct with T121

0m N fork. (T121)

14m [J87] Soil n. Or Br B
mod orgs

50m - minor diab.
pyritic Rd - R jokes as
in J85

68m,

82m [J88] r. Or Br B,
few orgs

130m - otc Kungu arg + bl

142m - contact 40° with lt gy gr
pyritic seams. Δ? with cal
along fractures
or v. fg ~~intr~~

Gdi → grades into otc?

154m } contact with Kungu
bl arg, lst, cal + py
seams.

172m [J89] pyritic seams
thin above otc

172m - contact with Diab to lt
cal intr dy

182m - Kungu arg, lst

209m small etc
209m Kunga ay, linst, py
220m - Kunga ay.
225m - 590 med Br B,
mod orgs
btw Kunga ay +
Kunga bl. linst.

225.5m lge etc bl. linst.

240m - dlys of st intr to
Diab.
green.

280m → Di. w. H₀ phenos → 300m
cal str.

320m end of etc

391 400m r Or Br B, mod orgs

404m etc. D.A. volc ^{5m} H₀ phenos
poorly developed

417m ~~2.5m~~ wide 2.5m Diab
dy. wpy.

430m same
END of Rd

Jct Lower^{er} rd (T120)

0m

69m - ck

81m Soil [J92] r. med

Br. B, f. mod orgs.

100-102m pitted weath

A-D

116m

↓ A-D volcs etc, w py

132m

139m [J93] m. r. or Br B
mod orgs

141m etc. Af, py Diab dyp

↓

157m

170m etc ^{quartz} ↓ A top180m 25° contact / w with
Kunga arg.

190m [J94] 1m section

thin ✓ fractured,
r. bedded Kunga

194m [J95] sil Kunga, py Gls

198m Diab. d. dy

201m - Kanga, py banded

216m end of otc
→ [196] r. m Or B B
few orgs.

270m [197] m B B v w r.
mod orgs

271m otc of QDi?
lt weath^{poor} pheros

282m Diab dy 25°

QDi varies to Dp. (finer grain
on margins?)

300m lats
dys - ① ^{Hib} lamprophyre?
Sgabbroic dy ✓

305m Diab.

→ QDip.
Contact 345°

320m with Kanga arg

327m [198] r. med B B
few orgs.

Curwen Rd.

350m quarry with
banded kunga cut by
R dy 65 cm wide
tend.

Arg is bxd and ^{perot} sil.?
along margins → J99

Ride up to end of ¹²² rd @

2 + 10 survey marker

0m - J100 otc + 61% gy Lst, W sil,

g carb str, some g?,
marip ?? or chl, py

gy Lst to bl. g. ic Lst
cal vns, py

25m py g. ic Lst, cal J101

32m end of otc

47m J102 otc? or otc of gy

sil. L or R in soil, po

75m J103 soil need Br B,
had otc

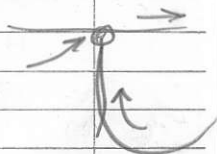
78m → 150m otc of gy, bl

Rd

Lst with gztic?
interbeds, + w po.

J104 - sil Lst? @ 110m

180m Jct
~~end of Rd.~~



~~T100~~ End of day

Feb 14/86



T100 at jct with T120

J105 gy Ma, w. chloitic
w. sil, ~ 1% py dissem,
(weak calc sil) from etc
@ ck + block across rd.

- traverse along T100 to
NW.

0m - ck

- above gy calc sil in

ck J108 - gy-bl
sil, Lst, py blotches

4m - to NW along rd.

- talus rubble

J106 20x30cm^{ang} blk of
v. weath calc sil,
As stain, realgon??,
g veining (stringers)

J107 same size blocks
of orig calc sil →
spotted horizons with
3/4 y g veining,
tetrah??

→ appears to be same
host rock also observed
as 1m x 1.2m^{v. ang} blk
@ 8m

20m J109 small etc or
fractured block 30cm
exposed of a R with
up to 1.5cm of v.h.

36m ok.

44m J110 med r. Br B - from below till possibly some mixing

J111 89m r. or Br: B. med orgs.

~~J112~~ 111m - 1 gl blk 2m x 1.5m

of Aapt - hbs p. - w sil in areas

J112 g str v drusy, up to 1cm wide cutting above main py.

120m - ck 3 10m up ck otc of J4 sil calcsil-L

check

J113 g4 sil calcsil, w cal py, g-cal stringers

122m - otc?

J114 v. a calcsil with g-cal str + drusy, rusty. 1m otc

J115 fl of py. or lge block??

163m fld J115 below r. soil

of note slt with py seams, v. r. fl rock some in stain

soil J117 r m Br B

175m - CE
J118 pieces off ^{orig.} several lge blds
 of sil bl LST? with
 g vns + po ing vns + host

188m - bant

225m small etc of ∇

230m etc of H6P-A? v.a.
 mostly numerous cutting
 of carb str.

J119 g str + drusy
 in above host

J120 30cm section
 thru r. part of above.
 v. fractured

235m

landing @ 295m on S side

314m - J121 m r. Br B, md
 org.

336m → 355m etc ↓

etc of A? Hb p. r. a, fract
mineral py mineral R?

①

similar to etc at J119, J120

348m D. dy @ 10°/65E
1m wide

353m - J122
po rich section
of above → 3-7% po
+ py in above rock.

369m etc as in ① with ^{cuttings} dr. z.

contact? with broken
up Kunga ~~etc~~ block?

379m - J123 v. py 10cm

zone in ~~10cm~~ ①

J124 collection of
dusky g str
up to 1cm wide

385 short break in
etc

390m less a.

J125 g str up
to 1.5cm wide
2 max

around 405m

410m J126 gtr vns & cutting
Attb p up to
415m end of etc 2cm wide.

426m [J127] med r. Br
B road drgs

454m etc of A Hbr less g
cal str. w py

↓ [J128] sample of above.
459m

469m etc of same

↓ [J129] grab of g-cal
vns.
509m

551m blk of A Cap + by
with ^{min} cal cement.

600m ck.

After ck - blk of A Cap +
LX

86-A-1 Float from 45N 48+50E

3cm quartz vein with heavy
pyrite, possibly other black sulfide

Feb 15/86



M-97

0 → 20m etc of v. chl.

A. b.v. with tge frags of banded Kunga, overlain by brecciated and banded Kunga, minor py, cal

11m - [N130] mid gy br, w
- r. B. below etc. few

73^m ore, etc in pit on S side banded Kunga

90m - start to get R^{gfp} float - v. w. p. v. w. py.

105m sm etc on S side of highly fract Kunga arg + gy Lst

0m = 120m - jet with M 90?

25m - 52m etc on N

v. chl, cal used, A ang? or H6 p. w. py cut by felsic dy fpy dy trending 50°/80° E.

8m wide w. py [N131] - dip across felsic dy.

cut by dk. - v. chl B. 19°/80° E
75cm wide.

then back into R → Wangp.

Di. fg.

55-60m - otc of fg Di any p

65m ~~55m~~ med r. Rr B, med oys.

1132

→ otc at 95-115m D, pyritic
with cal-carb seams

1133 Fr D.

135m otc - Hb Di, cal blebs
cut by D, dy
149m spur
corner goes around
corner of spur

- near end of small spur

86-1134 - med Or Rr B
med oys.

Back to Jct

small spur @ 50m

55m - 73m Hb Di - A appears to be
a. egg or ~~box ed~~ rounded
along fault. ?

86m Si etc

99m cemented fill

100m A dy - 60cm

Di = Andesite, w. vesic, hb

112m highly fract., w. brecc.,
bedded? faulted?

120m - contact with Kunga? >
25° / 70W arg.

136m Kunga arg with Kamuksea
above. (y aggl or
str. by??)

149m A^{brecc?} with Kunga frags?
same r. py. areas,

A^{and} Kunga blocks,
highly distorted layers
etc.

160m - mostly bl. arg. bands

194m contact with A-di @ 14/W
dy forln steep.

203m J135 sample
 Arg of r. py highly fract
 arg.
 212m - quarry Arg, r. disturbed
 225m - 20°/vert contact
 ↓ with A-Di dy

230m
 Arg. for 1m
 Di. for 2m
 240m D. dy at edge
 of quarry



277m J136 m. r. Br. B. mod. dy

280m jet with M90
 0m go N along M90

37m - otc of A-Di Kenya blx
 40m - J137 carb. g str
 ↓ in above dc
 47m minor g-carb sp
 along fractures
 55m - A-Di
 60m - Rfp at 10°/vert

69 - 73 A dy

73 - cal str. $\text{Kam}^A \text{Di}^{\frac{46}{P}}$

76 - 92m RFP dy

1m A dy

→ Kunga arg., dk Lst

100m = 0m J138 pyritic dk gy
arg., Lst.

1m - A dy - Di, cal str.

↓

4m

gy Lst, bl arg., w
py

68m - dk over cliffs of
i folded, arg Lst with

minor faults

more
- major fault @ N45° dip
Nly.

→ J139 fine m. br B
few org.

91m - A dy 080°/N

Kunga - Arg, sandy layers, gy

Adys often folded (L)

146m J140 med Br B, lots

orgs from above Kunga

150m A, PY ^{filled}
some kanga frags
near Gold axis

160m sm. otc kanga arg.

180m ck over " "

200m - otc Arg
(J141) 1m section
of r. fract PY arg.

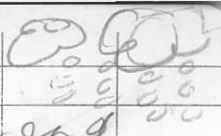
215m A dy with Arg frags.

263m
Kanga Arg

275m

freezing!

Feb 16/86



- start at end

of yesterday on ^{M90}

375m along rd. = 275m
chain

continuous
etc

275m

brecciated

± flat lying bedded
arg, ~~matrix~~ gy slt

314m - [J142] soil near R1
B, lots org

underneath flat
bedded arg. w.r.

375m [J143] gy sl, arg,

w sil, py, and
to v.w. py. Ady
trend 015°/vert,
1m wide.

395m Ady py cutting arg

400m Ady 024°/85° E, cut
b. arg. cal using

along margins in
arg. - ray offset
40cm by bedding
plane fault R. fault



419-433m banded arg out
by A. + Di. dyps,

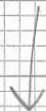
then folded

450m - centre of gully?

433-470 A-Di beds

470 A-Di etc 2m long

480m B Arg with A dyps
etc 0.15/85E



B Arg

495m v.r. folded section

in B Arg.

J144

Soil med br w.
r. B, 10 to 15 cm
below etc.

496m - Di-A.



507m fault $\approx 10^\circ/70W$
cutting Di-A

J145 30cm section
across a. crumpled
fault zone

W side of fault N-D., 6. Arg
to 512m

523m ⁽²⁾ top of 1.5
sp.

539m ⁽²⁾ etc

548m contact with ^{etc} At
hard 35% to W some
cap size
foss.

↓
575m

moderately
fine

602m [J146] soil mud

or B, 18% oys

No etc. or soil

688m ck.

694m soil [J147] mod fine

B mod oys, below
fill.

721 - 1st Arg etc.

725m ck

↓ 732m [J148] 1st Arg

with py. w sil.
↓ 752m (at 736m) A dy 0200

765m ck
 780m etc of chl Kaim

A., cal blotches -

794m - N-NE trending

A dip cutting Kaim

796m - Kaim

799m Contact of Kaim with

Kunga ag → bicecated
 near margin for 3 cm

805m

823-833m etc A-DP

865m J149 Soil med br
 ✓ w. r, med orgs.

904m - J150 w. s. l Kunga br
 bld - broke hammer!

920m etc of A. quarry.

935m

965m J151 med br B
 mod org
 below till.

979m ct.

999m otc of And t.
with minor Arg. ~~blk?~~
↓
1006m J152 soil below
otc med bc B. few
eggs.

1014m

1059m J153 med bc w.r.
B. med - few eggs.

1105m J154 med bc w.r.
below B. med eggs
A. otc from
1103 - 1106m

1113-1140 lge otc of Di-A
with ~~fsp~~ lots sm fsp
laths. brick from road, ~~blk~~
near road.

1159m → = part to NE
- log blocking it
→ M94

✓ Group M94

0m
70m lge bed A^{hb} Aug? f.p.
w. vesic.

161m end of Rd.

→ M94 to M93

0m
112m

✓ M93

0m jet
25m - 37m etc of
Kunga by matrix? ?
A or quit??

back to M90

on jet with M93
J155 med br w.r. B,
med oys

29m - beds of Ap

80m - J156 med br B w.r.
few oys.

150m J157 med n. br B
few oys.

157m picked up

On Tasu 120

Feb 10/84

Quarry with R dy

U158 dy margins, v. pyic

U159 py sil arg.

U160 py bands in arg

FEB 3/86

Crescent Prop.

FLY TO SANDS PIT, MOVE
to SEWER

FEB 4/86.

Set up transect @ Sta 50N 50E
on stump beside Rd. ~ 100m uphill
from Br. M. 140.

Start setting line.

Chain = 0 @ 50N on Mt. Main.
Rd ends 350m sub parallel to
Bk on N Side of B.L.

old white Rubber 260N 600E
(found Sap small zone at truck park.)

tran up Br. M. 140.

Rd ends @ Major gully unconnected class

1380 ft.

Rd trends $\approx 110^\circ$ towards SE end of h.k.

@ 215ⁿ Rd Bury changes $T_0 \approx 124^\circ$

88-J-2 float - f.g. vuggy gty float
391^m from end of Spur. Rd.

landing @ 481



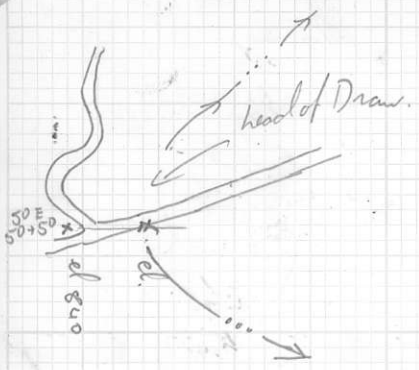
Rd is probably accessible
to this landing.

Quarry @ 552^m



82-J-4 Rd float @ 768^m

f.g. purple ? Ducts - small gty/cell.
string (3mm) camp py & has py all
~ 1-2 cm into rock.



Chains c BL 50450 N 50E
is 803^m 840' el.

el @ 51 N 50E is ~ 820'
in the saddle

Rd cuts over the knob &
crosses along the hillside through
the saddle.



50N
50E

50N

49N

250

200

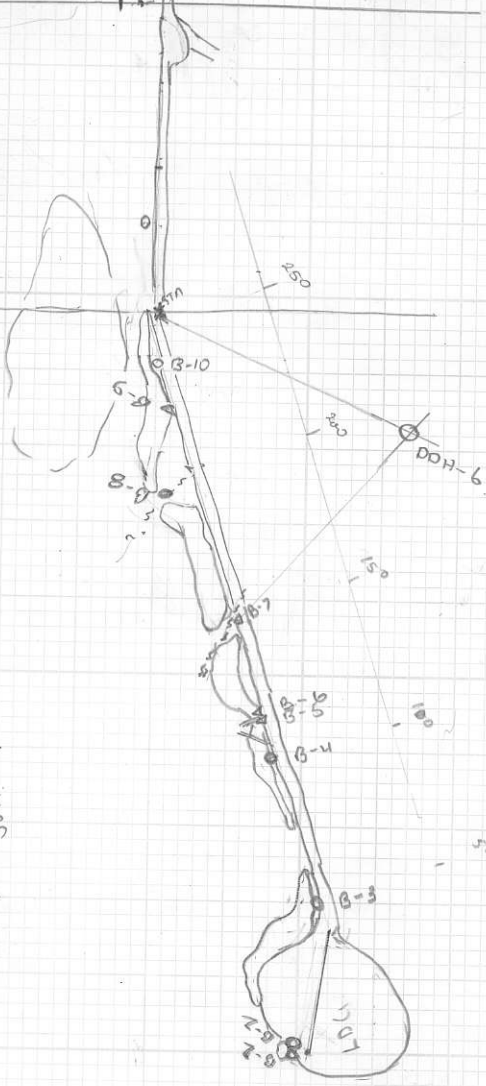
DOH-6

150

100

50M

50



Feb. 5 / 86

WAA

Crew Putting in line

Jan on BR. M 140

WAA on Met. Main. - start @
hauling @ end of Rd. above Linnæa ck.

BRUG DIST

009° 40" to edge of Rd.

(361)
B-1 - 0m Soil. grey Brown.

(361)
B-2 - 0m Rock of c. green mottled knobby weathering
gabbro - minor gtz/carb? stringers.

PH802E

acc. minor py.

(316)
@ 45" a block of ? fg. ss appears to be
included in the gabbro.

(211)
B-3 - Soil @ 50m dark Brown.

(261)
B-4 - Soil @ 100m reddish Brown. locally
redder. - some mottled gabbro.

(246)
115m - grey dacite/ryodacite dikes ~
.5m across cuts gabbro in irreg. fashion
No vis Sulphides.

minor gtz vesicles in gabbro.
dike trend is 285°/90

Feb 5 - 1984

(225) 136^m
B-5 - Rock gts/py fract in grey dacite dikes
04803 E

(224) 137^m
B-6 - Rock - gts/py/assy in a 10-15 cm
04804 E mineralized knot within the grey dacite
subject host in gts with minor Ser/cht.
with a center of py & dms assy & py
through the gts.

the dikes is irregular but general trend ~ 018
to 050
2m wide. - old Sample 6784 @

this locn. - small ch chains over dikes.

(204) 157^m
04805 E - B-7 Rock in edge of Rd - adj. to gabbro
grey dacite - strong pyon fract.

fault along dikes // fracture &
trends 018 / 75 W.

Bring to DDH-6 is 042° for 86-B-7

(140) 221^m
Rock in mottled gabbro again / still

B-8 - Soil from small gully - adj. to gabbro

(139) B-9 - Local float - 222^m - vuggy gts in gabbro.

(117) B-10 - Soil @ 244.

7

(104)

@ 257^m - bring to DDG ~~is 042°~~

(73)

B-11 - Soil @ 288 - grey brown

(45)

B-12 Soil @ 316^m - Red brown Soil

small adj gabbro etc - extensive etc
up hill.

(19)

342^m - Soil of small ldy.

361^m to line 50 N

~~Result to 0~~ - continue ~ Northward on
Metric Main.

B-13 - Red Soil adj to ?% of Yakam.
anchored tuff @ 410^m

sta 50+50 N @ 412^m

Result to 0

Cross 51 N line @ 48^m.

B-14 - on W side of Rd @ 75^m.
- Reddish Br. Soil.

B-15 - Reddish Soil E side of Rd @ 120^m
@ 165^m chg bring to.

190^m - B-16 yellow Brn Soil on East of Rd.
250^m - small rain forest ~ 15^m west.

NEVILLE CROSS

← Z

Check road
here !!

B-180

350

325

B-170

280 m

245 m

B-16

165 m

B-1

B-15

130

B-14

80

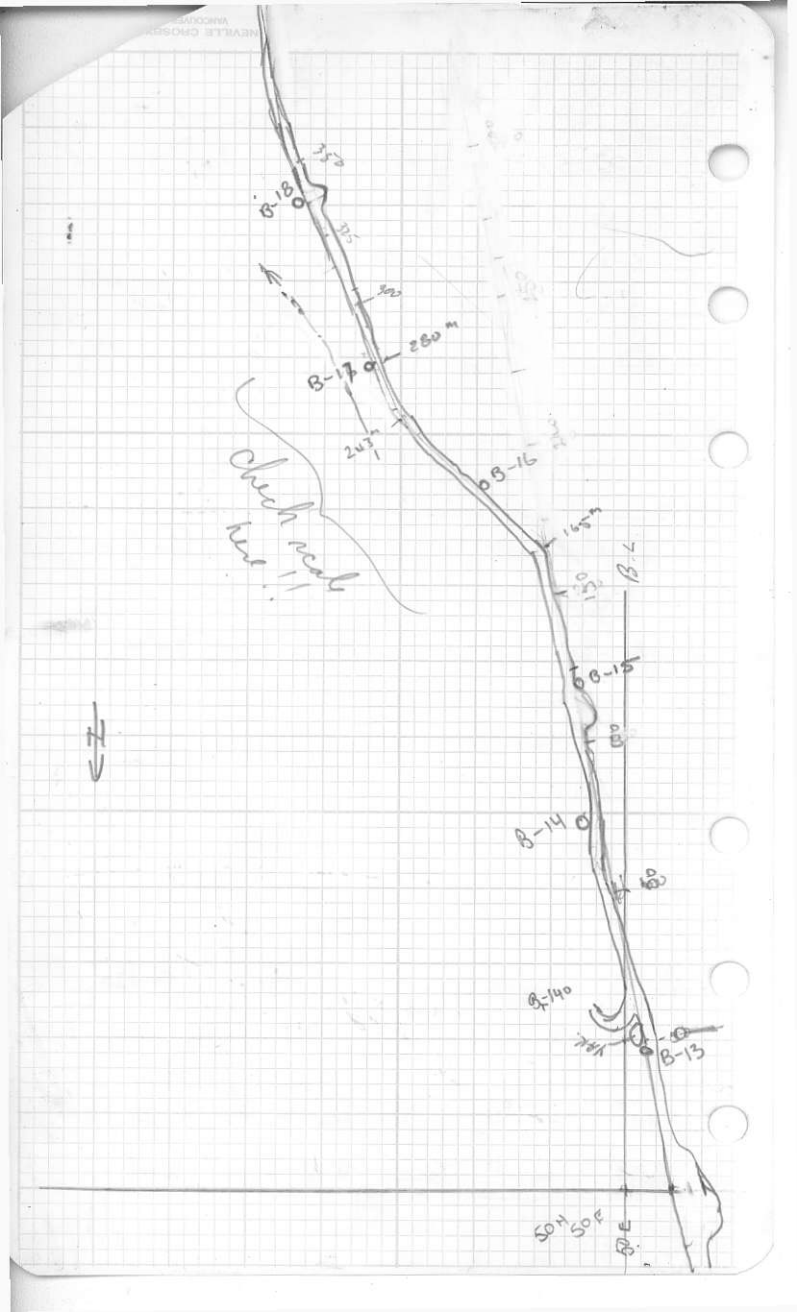
B-140

80

B-13

50m 50m

50m



B-17
280^m Yellow Brown Soil on West Side.
(Small Knoll on N. end of Rd. is in
line w of, B-17)

B-18
320^m Rd is increasing → E of. Ram
350^m Yellow Brown Soil on W. Side
360^m Rd being in 350 to lot.

B-19 377^m Soil - Yellow Brown W Side of Rd.

B-20 - 404 Soil - Yellow Brown E Side of Rd.

458^m Rd Spur to west. Reset to 0

B-21 35^m on Spur to west. yellow brown soil.

50^m - ck in small ravine crosses Rd.

+ o/c @ 45^m is dirty green, chloritized

Nb pyy Amphib ?? Yarrow?

B-22 154^m Yellow Brown Soil N side of Rd.

B-23 205^m Yellow Brown Soil SW Side of Rd.

B-24 256^m Yellow Brown Soil SW Side of Rd.

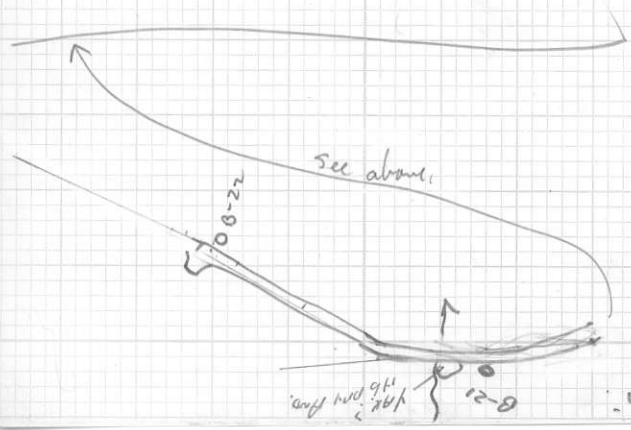
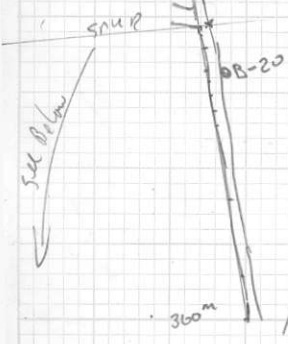
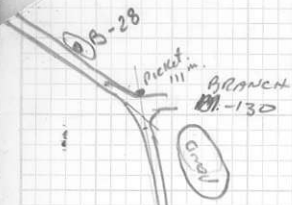
328^m end of Rd - small drainage gully

20^m ahead.

B-25 - Soil @ 328^m

B-26 - float - Rd - dark green N.W. pyy

08406 E
305^m w/ gt₂ - carb veins + obs. f.g. py ? cpy ? aspt



Reset to 0 @ Metric Main \rightarrow N

old chainage = 458^m

B-27
035^m - Yellow Brown Soil

111^m $\frac{1}{2}$ Jct. pocket.

from 91^m bring down Metric Main
is 303° - Reset to 0

~~111~~
B-28
68^m - Brown Soil over Med green
fir Hb? Amp.

112^m - cross ck (see spur Rd @ 50^m)
Roadside gravel/silt and till.

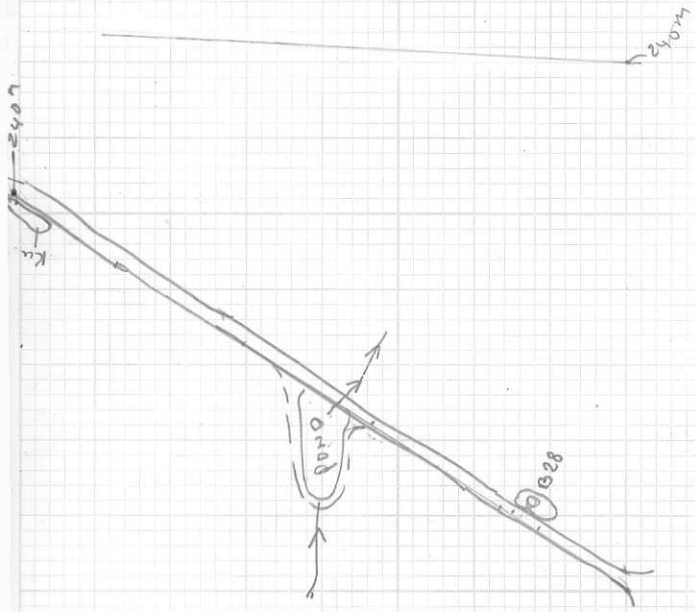
184^m B-29 - yellow Brown - ? till derived Bar

240^m Rd Bank subcrop looks like Black Hanga

avg.
265^m B-30 Yellow Brown Soil.

291 - $\frac{1}{2}$ c - B-31 - Bleach/silicified Lu?
08407E
old Ribbon 67850 P

B-32
319^m - Soil - Orange brown. -

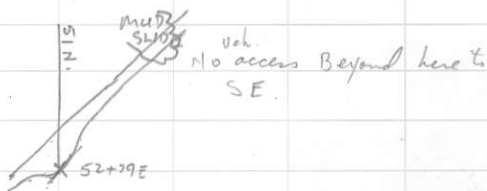


Feb. 6/86

WAN & J.P. putting in lines.

Run 51^N line E from Bl towards h.c.
E side of lower Rd (m 130)

@ 52+79 E



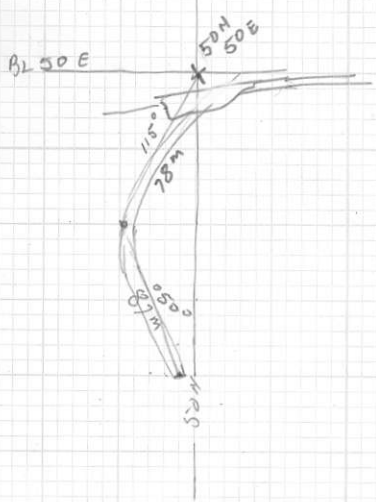
walk down Rd to where h. 50^N is
projected to cross.
from Rd intercept with line 50^N
it is 134^m along Rd (bearing 161°)
to Rd intercept with linear ck.

Rd goes 141° 56^m to S side of Rd.
then 112° 43^m to Jct with spur
on S side of Saddle

bring from NE side of Rd & line 50^N
is 145° to Rd intercept with h 51^N

from end of Spur Rd Near $50^{\circ} 50' E$.

050° down Rd: 87m



Feb. 6.

J.P. putting in sta on L. 50N. \rightarrow E

Henry cutting L. 50N \rightarrow E.

WAN putting in sta & line on L. 49N \rightarrow E

J.P. finished

& then will WAD completed 49^N LINE.

to 54 E - NE Side of Rd is @ 53+92 AE

Start 48N line to East.

E side of Rd is 48N 50+50E



Feb-7/86.

J.P. WAD. Pathing in T. 48

AHHA Running line ~~from~~ 45 to west.

Greg cutting \rightarrow E on 48 then \rightarrow W on
47

G.H. finishing 50 \rightarrow E and \rightarrow W on 49 from
Rd.

Sta 48^N 52+00 is on W. side of skid trail
from knob on end of spur.

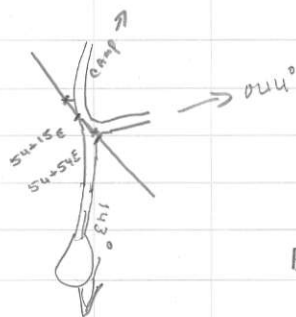
line ck @ 53+04^E

pitch @ 53+04^E due to heavy slash.
in ck.

Sta 48^N 54+15 is on S bank of Rd.

line goes through intersection.

Sta 48^N 54+54^E is on E side of intersection



EOR @ 48^N 55^E

Feb. 7/86

Extending line 49. to E.
crosses linear ck @ 54+44 E.
EOL @ 49^N @ 55+00 E.

||

Feb. 8 - fix Saw
Run 47 line to West.
old long line found on 47^N @
48+80 W.

47^N

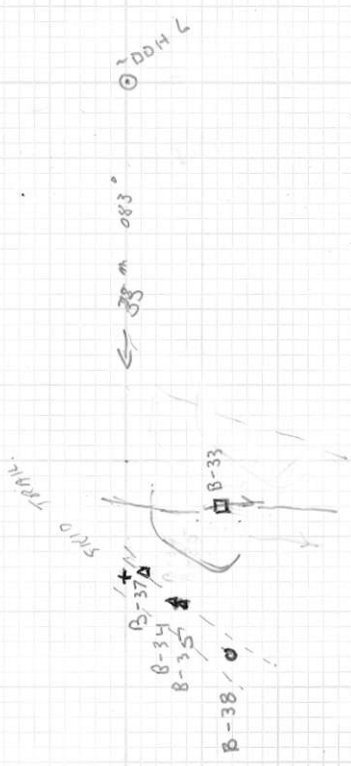
46+57 E

old Sample site 56924

46+07 E Cross old Cut line. ? Camp clearing
on DDH site is to the SE —

clearing in Camp Site —
line 46^N crosses through Drill
core & helipad.

line 47 ends @ 43+00 E



Feb. 9 / SUNDAY

Phoned Peter ~ 7:30 AM

Gregory cutting 46 N to East.

Gerry cutting 44 N. to West.

AHHA putting in his 49 & 50 to West.

WRH & J.P. check out Red Seam.

34
B-33 Silt from small trickle drainage
through old trench area.

B-33 Soil from old skid trail?

08408 E

B-35 float } gtz/carb alt - hard grey.

08409 E

B-36 float } f.g. grit B-35 has silica stringers
w. f.g. sulphides B-36 has patches of
more intensely alt(~~g~~gtz) showing a f.g. cherty
grey colour. with f.g. py & ? aspy.

common fine pebbles are gtz or suggy xlines
gtz.

B-37 float - f.g. grey grit or volc?

08410 E

HS

cut by gtz/carb stringers & veins
up to ~ 2% sulphides mostly py.

fine stringers exhibit open space textures
float is angular / locally derived.

B-38 - Soil - Reddish Soil
from skid Rd.

B-39
08411 E

(HS)

float - grey silicified tuff?
f-g gts & sulphides - float is in
small trickle drainage

B-40
08412 E

Ally
- float

float - angular dark grey green
? andesite cut by 5cm gts vein
gts vein has rusty ^{fract.} and luggy textures
- No vis sulphides with the gts.

B-41
08413 E

float - angular grey green silicified &
carbonate alt. Very similar to B-37
from Trickle drainage
HS is on adj stump - flagged.

Bang 041° to DDH 6 from 4800 N 5050 E

Bang 115° to DDH 6 from 49 N 50+19 E

B-42
08414 E

(HS)

float from Dike @ 86-B-7
good py ASP-1 & minor sph in
white/grey spherule to Dact.

FEB 10 / 86 - Clear coal.

B-43 Rock o/c 49+99^E / 44+40 N.
08415 E
White Rhy or possibly chilled margin
on a Granitoid dike?
unreliable trend is ~ 160°
small clots of chl/asp/px contained.
exposure is in recent tip-up
similar float is uphill from dike
trend

B-44 - Rock float - grey silicified
08416 E lapilli tuff similar to that seen
in trench near DDH 6.

Here it contains px, po, sph. & asp?
other float is dissimilar.

location is on Road Survey @
210 + 35^m on NW side of the Saddle.

290/70
B-45 - o/c - faulted, Kuc - very hard.
08417 E
BL, 39+25^N - silicified - fine sulphide - px po sph
? asp. - o/c is in small drainage
in stream gully from SE crossing
BL @ S 40+00 E (see AN plat.)
on Colinear ck.

Feb-10/86,

Line 38N 47+50E

crosses Road Survey 7028 m
E of Road Survey Sta 15+13

our lines are blue flagged west
of this pt on 38 & 39 N.

38N has been reflagged in yellow
from here to Cut Bdy.

L 39N when it crossed the
cut bdy has been yellow flagged

for ~ 25 m.
it is blue E & W of the cut
bdy.

Run 47+50E line down to 36N

STA 36N 47+50E is on E side of
Klinean ck. This sta is ~ 607 m
off the ck. a further 708 m E and

~ 5 m N is a picket labelling a
forestry plot 10 BK 106 3Bm & GS
85/06/13.

Pink flags are common

trees are painted w orange paint

Run line 36^N to E from 47+50 E.

16^m hit. Port on pink flag line
marked 4+55 = END (? spur?)

flag & sta line to 48+50 E

Run line 36^N to W from 47+50^E

end @ 44+50 line would

cross Road Survey @ $\approx 75+40$

and $\approx 36^{\circ}$ 44+20 this is very near
the valley bottom. line ends @ sta 44+50

Line 37^N Run E from 47+50 E

crosses ck @ 48+25 E

@ 48+32 E hit old Ribbon ^{500^W} 100 S

@ 48+39 E hit old Sample Ribbon ⁷⁸⁴⁷⁵⁸ 89758

% here is dark grey green Mariss A.

B-46 } c 48+44 - Rock - shy Dike trend
08418E } ~ 150°/90 margins are 95 inch

B-47 } - o/c @ ^{37^N} 49+00 white/Tan Rhy Dike
08419E } 2-3^m wide. Trend $\approx 124^{\circ}$

B-48 } contains f.g py & pos. 25%
08420E }

Run line 37^N Between 46+50

& 49 E

(over)

Gerry cut the 47 line
Gregory cut the 45 out & 46 back to
camp then ran out of Gas and came in
early (2nd time - 1st time he didn't like
working on same line as Gerry and quit
early.) Greg cut back on 46 to old
camp.

Jean & I sampled & put in lines
near "Audrey's" showing
AK & HA. put in lines 41 & 43

Return to Camp & Met I.P. crew -
got saw Parts from I.P. people.

Went over Maps & data in evening
- forestry gave us a Base Map print.

Feb 11 / 86

Set up I.P. equip
- got 48 litres of gas from camp.
Micky Brown brought Gens out to Site
Jean - Sampling & Mapping on M-140
Gerry started Mag EM survey @
Audrey showing.
I.P. crew set up & starting E side of
grid

B-49, & B-50 NOT USED

W.A. on Metric Main from end
of Previous Trav.

Start @

B-51 - Red Brown Soil @ 51^m S side of Rd.

start Quarry @ 69. - Quarry is mixed.

Ku & dark green A. chert/sills

beds are generally NW / 30° E

but are locally convoluted.

local faulting ~ 000/90.

B-52

08421 E

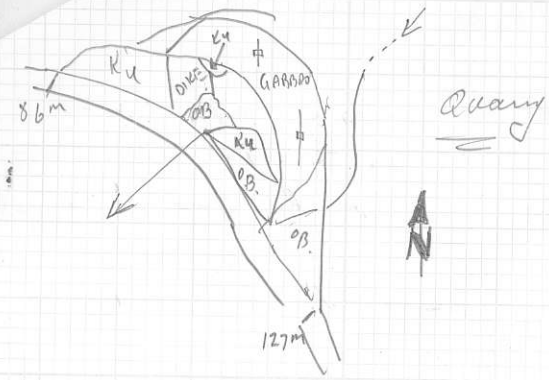
qc - Kungu - in Quarry @ 86^m

hard - Grey/black fossil gty / carb stringer

and common mins py ~~on fault~~

carb stringer are aligned along

fractures @ 164° / 80° W



Q - 88^m Quartz is in a grey f-g gabbro/
andesite fm to ~ 110^m
with fault bounded blocks of Ku included

B-53 - rusty silicified Ku @ fault contact
08422 E will Gabbro. 106^m

end of Quartz @ 127^m - more or less
along a strong joint face trending
N-S

B-54 Silt @ 143^m Rusty Brown.

B-55 Silt @ 210^m Rusty Brown on
? till

B-56 Silt over a small wedge of Ku in
sheared grey/green And.

08423 E

B-57

float - strongly silicified Ku
- with vuggy qtz - on Rd Silt @
304^m -

(HS)

B-58 - Rusty Brown Silt @ 342^m

spur Rd Joint Main Rd @ 378^m

Resit to 0 - traverse Back up Soren.

55^m - begin ditch o/c of grey Ann.

68^m 2^m long. Ku Wedge in upper side
of ditch - Lower side in well
fractured & locally silicified -
Fringe and gtz lenses along faults.

08424 E

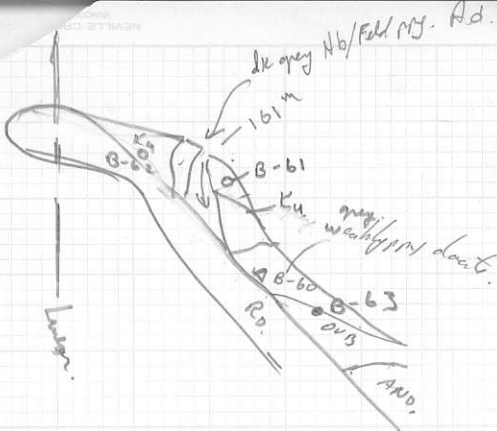
B-59 - 68^m Rock - o/c - see above.

76^m Ann. wedges out in Ku



81^m





@ 104^m uphill side cut is broken
& fractured - dark grey green sand/gabbro.

@ 123^m - o/c is @ grey weakly pyro dacite
with acc. pyritic clots and calcite

~~B-60~~ 128^m amygdalae.

B-60 - Rock - from several gty/cy
08425E clots. -128^m.

136^m - Ku begins again
bedding is ~ 040°/25° NW

161^m ck.

B-61 w side of ck. Soil.

185^m Ku in hole 312/80 NE.

B-62 Soil - fines over Ku o/c.

a distinct N-S topographic depression/line
goes through the end of this spec.

B-63 Soil. 5^m down Rd from B-60,

FEB / 11 / 86

Reset to 0 at bottom of Spur.

08426^E 55^m

B-64 Rock - o/c dark grey silica

alt. ? original Rx - now is dusty
fragmental. perhaps some ka / andesite.

B-65 Soil - Brown @ 115^m

over dirty grey green andesite.

local Rk has a lapilli tuff - rotten stone
appearance.

B-66 - Soil @ 158^m

- ? till subsoil

220^m o/c of Med grey / green And / & Sil. tuff
to 330^m

B-67



7th Nov Wed.

Feb 12/86

J.P & J Put in line 40 & 41

To W east of B.L.

GH - mag/Em on line 43 / GREG → on line 48

IP on line 48 & 47 to East.

B-68 - float Boulder 10^m N of
08427 E L40 40+55" - crudely layered

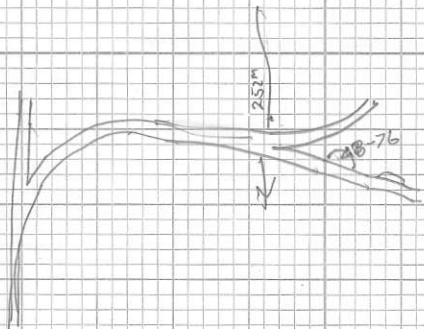
(HS) LT Bx dark grey brown on
fresh sp. is grey silica flooded
throughout acc. dark stringers
abund. (5%) w.f.g. disc sulphide
in clasts & matrix. fragments
weather in relief but are not
compositionally different from Matrix

B-69 Same Rock - 0c exposed in

08478 E ~~downstream from B-68~~

ck ~ Grid 40+07N 45+93E





Feb 13 / 86

Greg doing lines 39 & 40

Greg cutting line 49

J.P. crew completing 47 and re stringing
wires to B.L. then commenced surveys to west.

J.P. & WAD @ jet above Wilson Bay

lean on upper rd (? T 120?)

WAD on T-100 Ku Marble skarn @ jet.

contains Py.

Similar %c to B-68 & 69 is %c @ Tarn
Nashua & Metric Main - ref. HS collected.

Similar rock with carbonate matrix is %c
~ 200 m W on T. Main from today's start

B-70 Soil - Barn @ 31" uphill side

B-71 75" - Yellow Barn Soil

B-72 110" Rock %c - grey green andirite
08429E will darker sandstone clasts / minor
py / quartz / carb strings.

%c extends from 108 - 141

@ small culvert.

B-73 141" fractured & broken^{ku} rock @ culvert
trends 096 - 605 ? bedding?
- silicified & broken black argillite

B-74 - Siliceous sand ^{with} grey limy Ka.
08430 E - contain v.l.g. sulphides

small % of grey A @ 145.

165" - 188" uniform dark grey green
fine med. gr. gabbro contains ~ ~~1%~~ 1% py

B-75 208m. - Yellow Brown Soil.

252" Jet - Rd to Wilson Bay -
line continues towards W. Bay.

B-76 %C @ 288 - dark grey, siliceous Ka.
08431 E

300" - 305" - Massive med. green / waxy
py Hb / feld. and lim. %C.

B-77 - Soil @ 320" - Yellow Brown.

B-78 Soil @ 370" - Yellow Brown

B-79 Soil @ 425" " "

~~B-80~~ 450" - Jet @ - line follows ~~W. Bay~~
Rd to Wilson Bay.

B-80 - 500" yellow Brown Soil.
spits out as ~~stone~~ ~~alterations~~ → 800m

450^m ~~Jet ②~~ ~~to follows open towards~~
~~Water Bay~~

B-81 543^m - Yellow Br Soil

614-631 - Massive ^{med} green andesite
with occ. ep. fractures - small ^{quarry}
644 creek. - runs up through Jet ①

B-82 Soil @ 665^m - Rk used in Rd
~ epoxidized And & black
pyrite K_u - K_u has py both on fracture
& on Bedding planes.

Soils are developed over stream
alluvium → 840^m

B-83 - 800 m gravelly brown soil.

B-84 - Gravelly soil @ 865^m @ end of Rd.
~ 150-200^m from Beach.

Reset to 0 @ Jet ② - end of spur a
small knob → @ 130^m
old Rd Survey in "3+10 end"

Return to Jet ① - Reset to 0
Proceed up Jet ① (Taru 100?)

B-85 30" Ku o/c. - broken &
08432E Hfs/silicified - common v.g. py

on fract & in bedding planes.

Rock is very Broken

Ku o/c from - 25 - 33"

grey/green massive And 35-55.

this may represent a large dike on the
west side of the small ck. -

it is in o/c in similar position on
both rds.

B-86 Soil @ 60"

92" Jct ③ to East.

Continue line along rd towards ck → S

Ku road material is very hard Black
spite rds.

B-87 - yellow Brown Soil @ 158"

08433E

B-88 } Rd with Rock } Ku - silicified

08434E

B-89 } 196"

- - grey Silicem. Buff

not unlike B- 68/69.

B-90 Soil 250"

B-91 Soil @ 293

B-92 Soil @ 385"

405 Ru / green and Contact.
trend? ~ 350/90

K~~ite~~ is on W Side and beds
are upwarped or dragged @ Contact.
Ru beds trend ~ 060 35 NW

B-93
442 Silt - yellow Brown over ?-till

B-94 Silt @ 504^m - Brown Silt over ?-till

B-95 Silt @ 585^m from Top up -
yellow Brown Silt.

B-96 Silt @ 665 - small but
fairly major tile drainage to Wilson ck.

B-97 Silt @ 700 in small Trench around
- Yellow Brown.

B-98 Silt from well established drainage
@ 755 - gravelly Silt.
1/2 on SE side of ck is grey Sand.

830^m 1.5^m wide white weathering shaly dikes
trend 054/90.

08435E
B-99 -

Rd fill sh @ 840^m @ new Jet.
thin f.g siltstone / marl
fractured with calcite veins
and shot with fine py on fract
and disseminated.

@ 840^m Ditch etc is Marine
grey/green andesites.

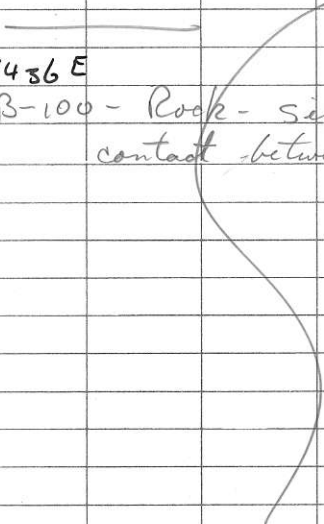
Contact trends 015/85W
AND to E. and a white pebbles
? clay alt rk to the west.

at this Pt. the main Rd swings
uphill and an as yet unbuilt
spur heads straight ahead.

@ 1020 Rd swings back to Rt downhill
Blasting work here is in progress.
Rd grade is established beyond.
but is still under construction.

08436 E

B-100 - Rock - siliceous & pyritic
contact between ? A. dike ? & Rhy dike.



Feb 14/86.

B-101 - Soil @ 28^m up Rd from
B-100 - yellow Brn Soil over ? Ku
siliceous Black Argillite

B-102 yellow Brown Soil @ 95^m

B-103 " " " @ 145^m

B-104 Rock o/c - Andesite dikes @ 160^m
025° / 75 w

contact on E side with ? Ku - black
arg - contact not well exposed.

175^m small quarry ready to load &
blast in mostly andesite.

B-105 215^m yellow Brown Soil
Gravel in main headed ~ E

B-106 - 243^m Soil on scungy Karm.

B-107 08438 E 255^m Rock - Karm - dirty green / ch
well fract. & Broken

o/c extends from 250 - 273
with a little rotten highly weathered Ku
on East end.

287^m - small ck of culvert.

B-108 Soil - Yellow Brown Soil
299^m

08439 E

308^m

B-109

Rock - Rusted Broken &
weathered pyritic Ku
surfaces are graphitic. along fractures
& bedding. 274/56 N.
- o/c extends 303 - 315
then broken? Kam 315 - 322

B-110

318^m

silicified and pyritic Black
Ku exposed in ditch.
contact with Kam is ~ 290
dip hill cut is in Kam.

B-111

08441

(A.S.)

Rock - float - angular white weathered
rusty highly silicified Ku or schists
with black? sulphid bearing? stringers
in Rd. bed. @ 370^m

Rd ends at a small but well developed
ch @ 418^m.

o/c on east side of ch. is dark
green massive A.

Resist to O - stand on T-100["] P["]

30^m - Kam o/c on NE side.

39 - light grey green A? dith?

46 - Kam. (see prev. note. ^{the grey} green And.

Feb. 14/86

131^m on SW Side of Rd near top of small hill
is red grey green Andesite.

B-112 - Soil - Yellow Brown
from S side of Rd @ 215^m

236^m cross small ck (previously noted.)

B-113 NOT USED

B-114 Soil @ 252^m - Mel Brown

268^m o/c is grey/green weakly hb py And
on S side of Rd. adj to large cedar stump
with 2 stess & a Bark cut off

B-115 Soil 305^m - Yellow. Brn ↙
from near top of hill.

08442E

B-116 - Rock o/c from Middle of Rd
@ 327^m 042/73 S.E.

Vein or contact of rusty silicified Ku.
and a dark green hb py And.

end of Rd @ 395^m - Blazed sta
reads 3+95 = END.

08443E

B-117 - float in Rd Bed - white
rusty schist with pale py ^{vein} and ? py
also fine black selvages to pyrite vein

08444E

B-118 - highly silicified Ku with abundant py
rock is also bleached from black to light grey.
adj to B-116 on S side of Rd.

B-119 - large Ku Quarry - rhy bed
with black/grey sulphide + py - bed is
~ 3/4 inch thick - Black reds
adj have enhanced f.g. of on fract
& dis.

B-120 ~ 24" Strat below the rhy bed
- clastic dikes - grey rhy frags,
black shale frags in a dark grey
carbonate/silica matrix - abund f.g. sulphide
~ 20" further down and anastomosing
with the clastic dikes is a
dark green/grey med grained ls. Diavite
or Andenite.

B-121 - Andenite dikes (see above)

Ku bedding 046/40

Dike is erratic across the bedding
but is generally ~ 060/65

Sat.
Febr. 15/86

J.D. & W.M. on M-90 near LCP & linear
trace.

I.P. crew on 46 & 47 → W.

Gerry on 47 & 48 → W

Gerry cutting 50 → W of B.L. - he should
finish today then go to 43E

Start @ Saddle - lot of M-90 & linear

B- Rd goes uphill and onto spur looking
over crescent Inlet.

B-122. Soil @ 34^m.

110^m dirt green AND. o/c.

contact 200/85 E.

43^m light grey / ^{green} / 91/4 and dark

45 contact 156^m / 90

45 dark green and.

over Ku Rubble @ 47^m.

55-65 - dirt green AND. o/c.

local contacts & bedding are highly convoluted.

B-123 Soil @ 75^m Yellow Brown.

B-124 Soil @ 127^m Yellow Brown

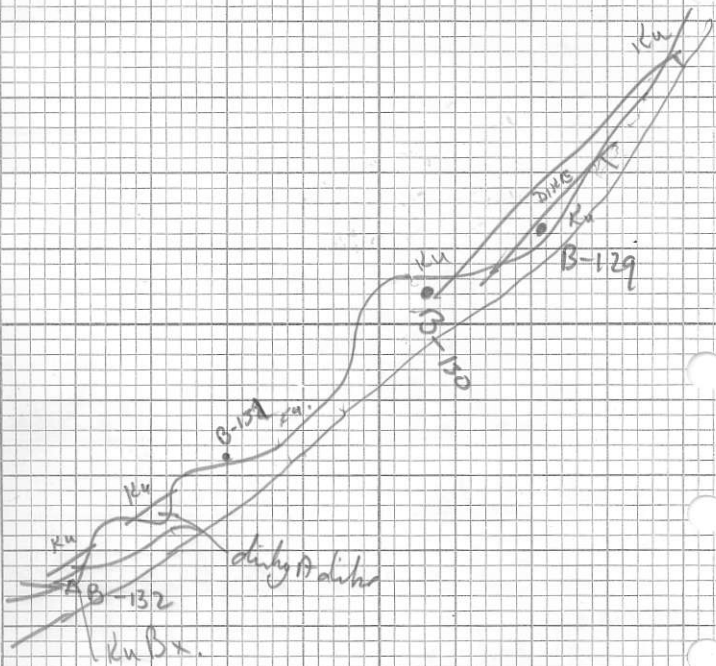
08 445E

B-125 - Rock - @ 175^m - Silicified broken Ku. -

o/c extends from 175 -

strong joint pattern @ 208/90

beds are ~ 288/75 N - contacted



B-126 - Rusted & Silicified Ku.
08446 E 185 m

B-127 191 m Rock
08447 E Strongly pyritic & silicified Ku
along a grey dacite dike.
Contact trends. 198/90.

08448 E
B-128 - 197 weakly silicified & pyritic
fracture in Ku thin bedded arg.
bedding is flat to gentle dip N.E
fracture as. ~ 200/80 E.

210 → 232? dirty grey green and.
- continuity through here is not certain.
contact @ 232 bears. 148/26 W.
Ku o/c to S+E. beds 160/20 E
strong joints @ 036°/70 E

B-129 - Soil @ 252 over Ku.

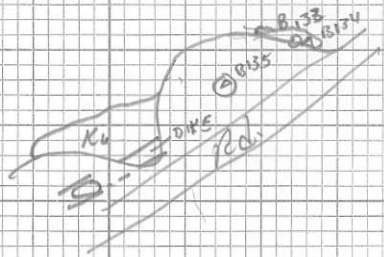
240 - 248 - dirty green and
dike sub il road trends 028/90

B-130 Soil @ 262 m
over Rusted & Broken Ku. -
takes fine soil.

B-131 Soil @ 300 m

08449 E

B-132 - Rock @ 334 - Ku Bx 1
with A Matrix



B-132 cont'd - rock is silicified
(H4) and pyritized - cherts of Ku arg
are in a siliceous tuffaceous matrix
this rock is not unlike
B-68 & 69 on the tuff Bx @ Wilson Bay
except for the Ku arg. frags.

B-133 - Reddish Brown Soil @ 384^m

08450 E 384^m

(H5) B-134 - Rock - Similar to B-132
scattered relatively small Ku
between 132 & 134.

Ku o/c @ 400^m

415^m - a Rock nubbin sticks up in
middle of the landing - it is
silicified Ku & Ku Bx. & is pyritized.

08451 E

B-135 Rock from Nubbin.

424 - 435 Ku with a dark green A dth
exposed along red edge. ~ 2^m wide
034/90.

467 - 3^m o/c of Gabbro (diabase)

531 - End of Ldg.