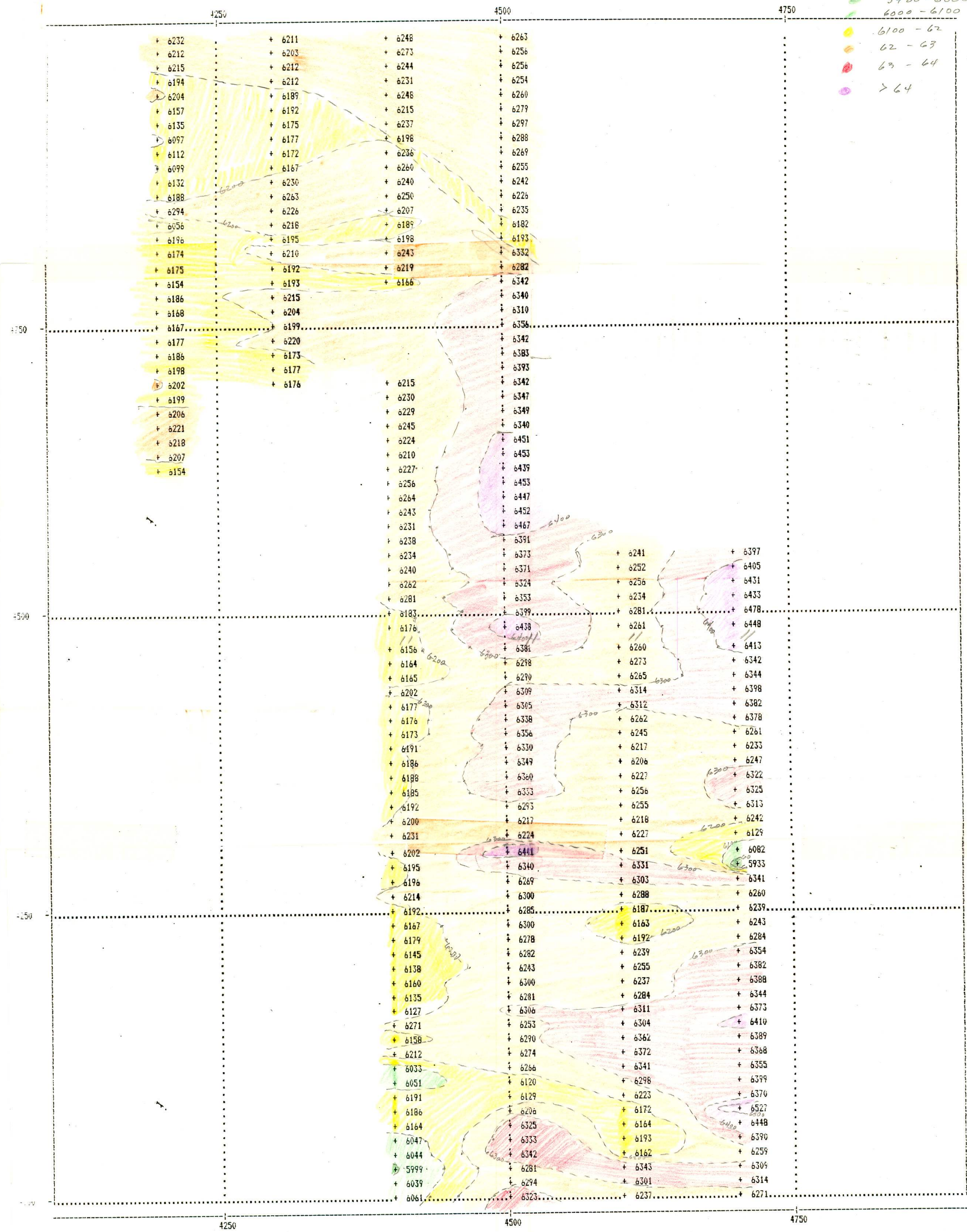
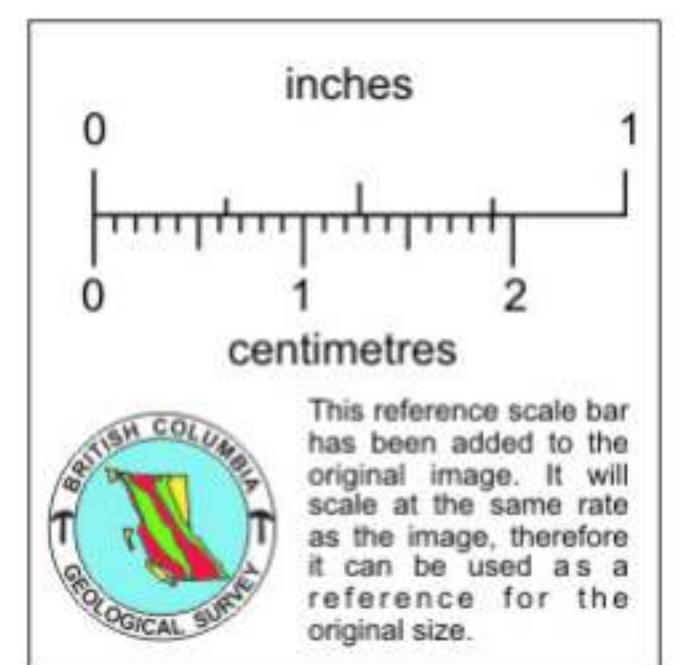


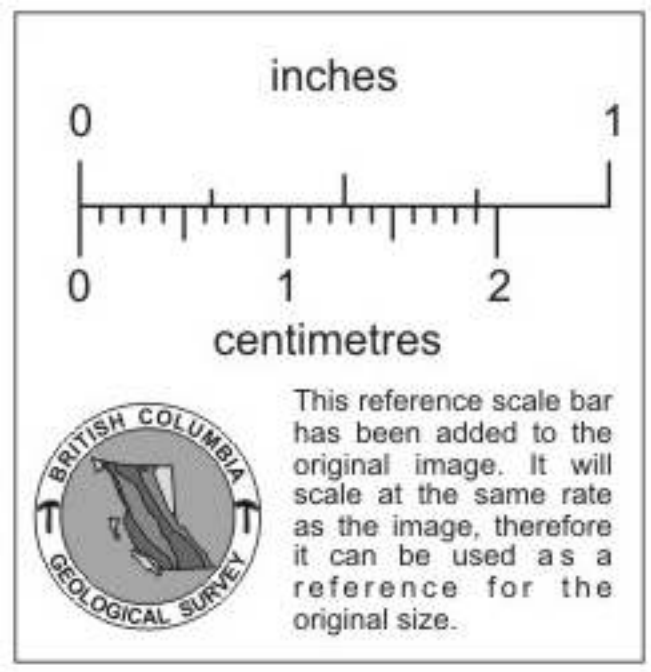
- < 5900
- 5900 - 6000
- 6000 - 6100
- 6100 - 62
- 62 - 63
- 63 - 64
- > 64



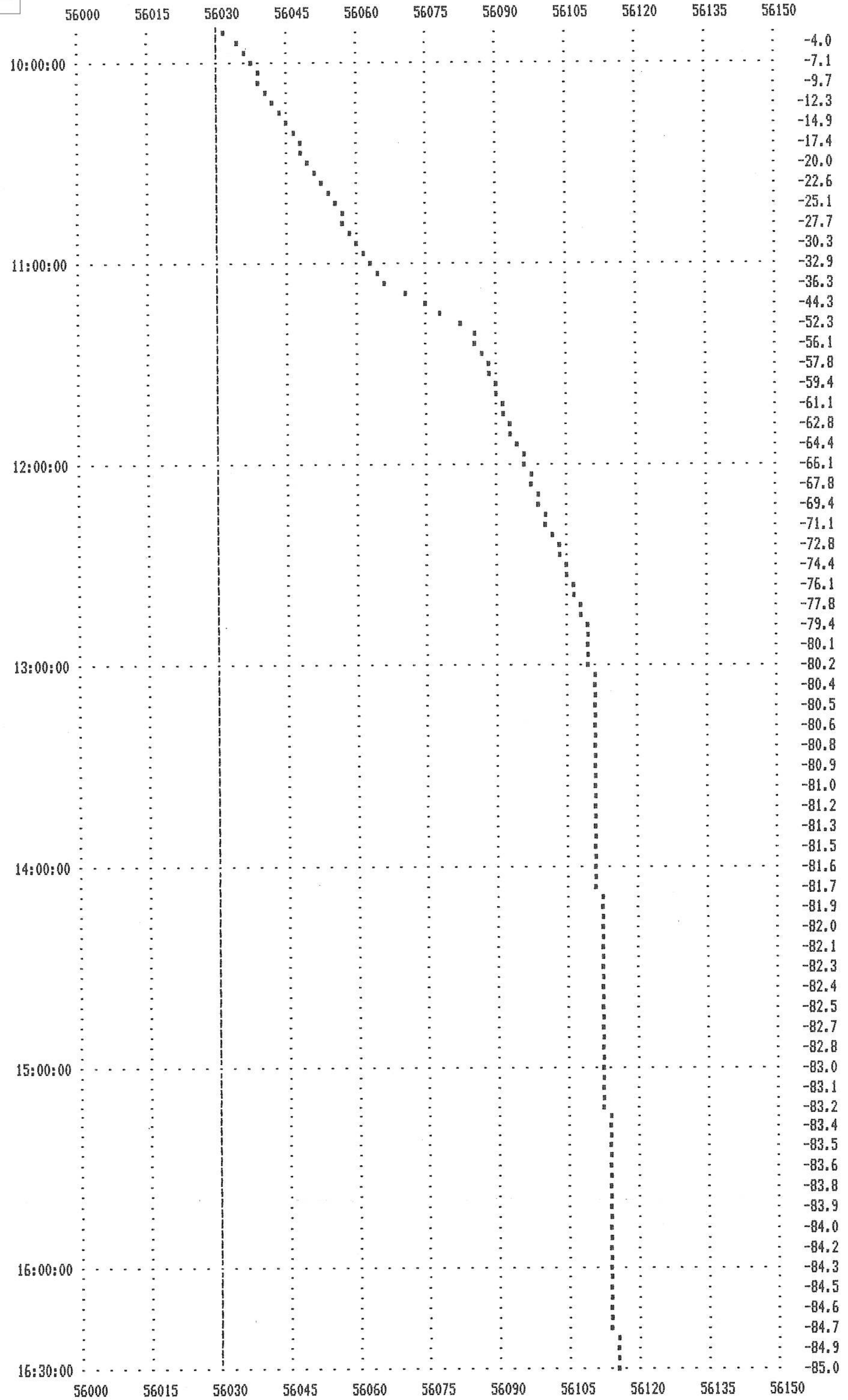
JC STEPHEN EXPLORATIONS LTD.  
 JUSKATLA INLET - BCI  
 File: MAG01.CLN Date: 4 NOV 87  
 Field: Mag User: MARK ISAAK  
 Scale 1:2500  
 SCOTT GEOPHYSICS LTD.

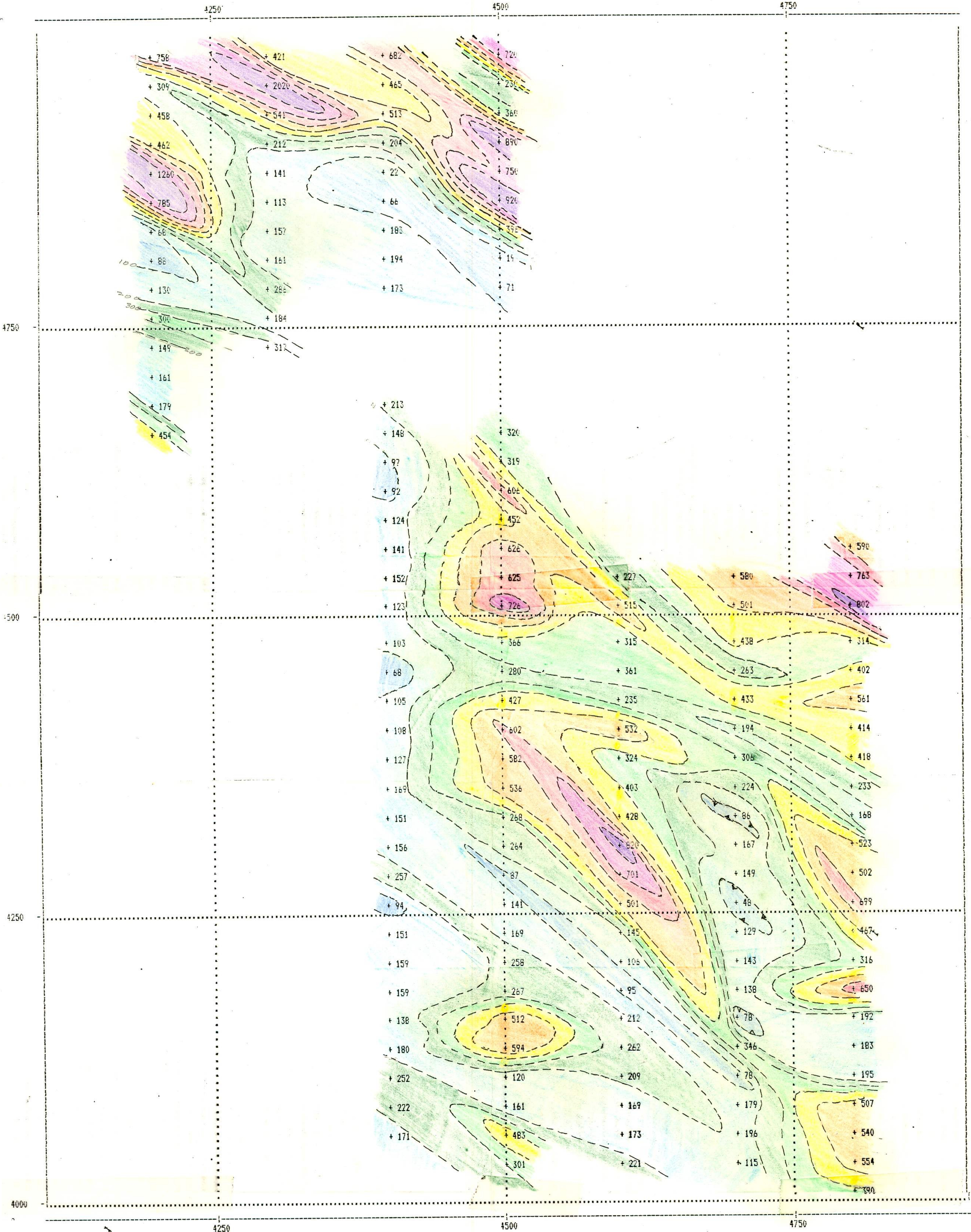


671112  
 Skygold  
 103F



Base Station Record for **Nov 2, 1987**  
 Value: **56030 nT**

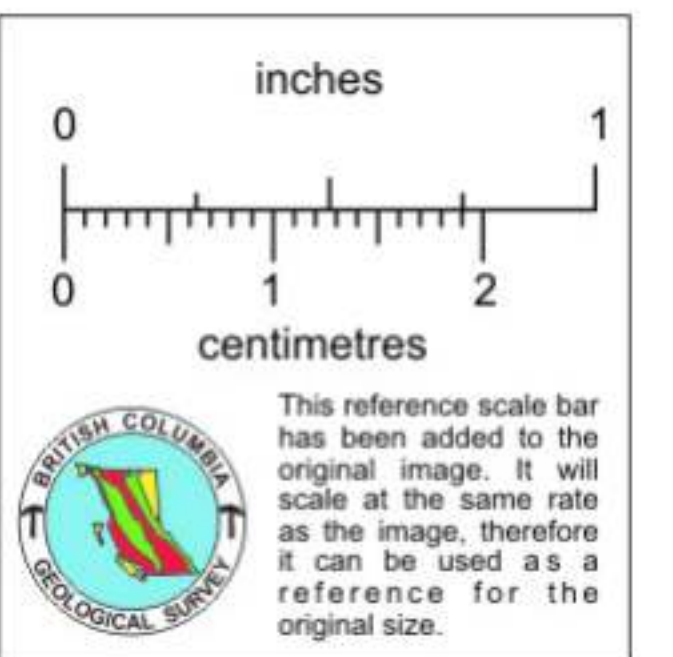




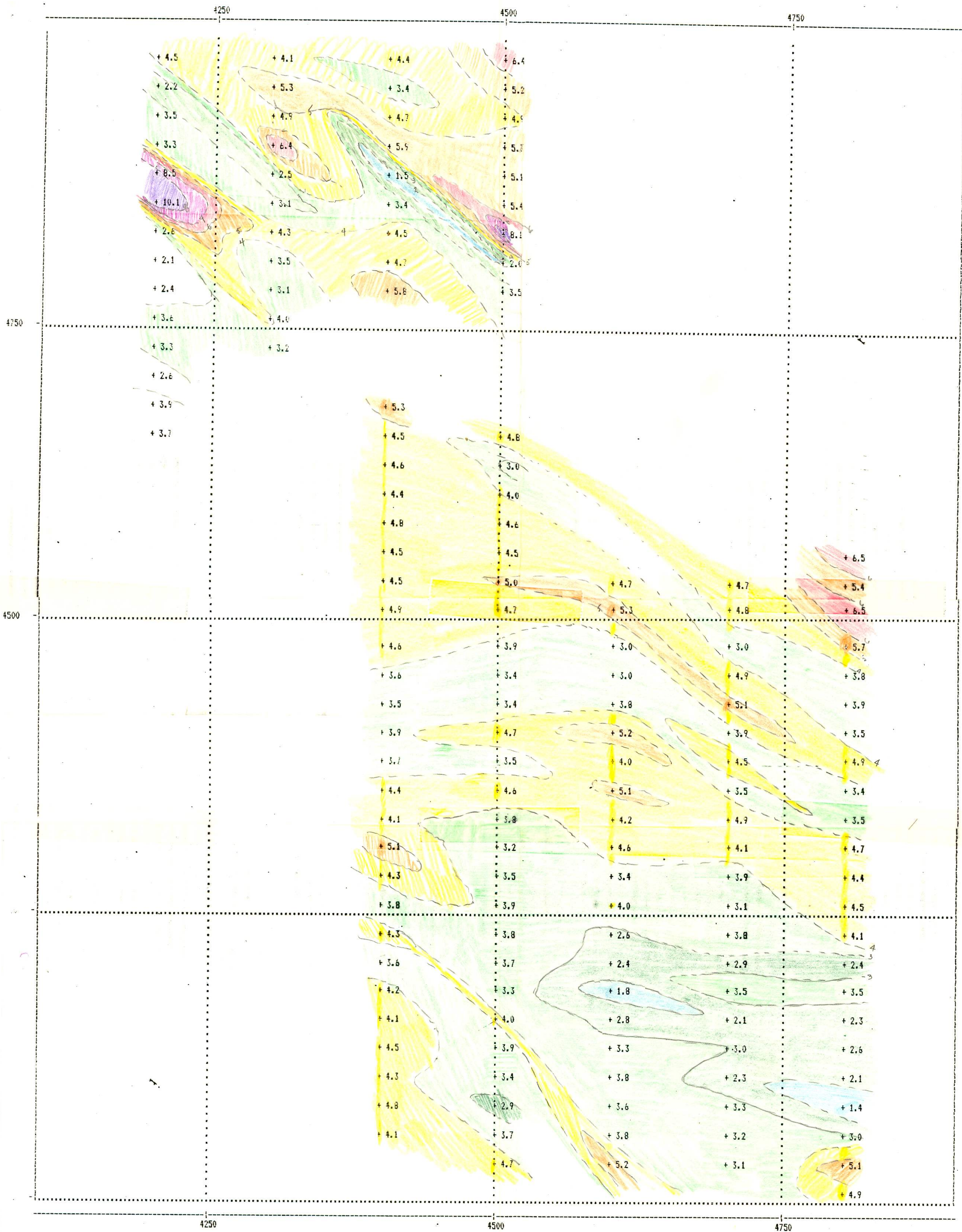
JC STEPHEN EXPLORATIONS LTD.  
 JUSKATLA INLET - BCI

INDUCED POLARIZATION SURVEY  
 Array: Pole-dipole CI pos: N Dir: S A= 25  
 Field: RES. Sep: 1  
 Scale 1:2500 DATE: November 1, 1987  
 User: Alan Scott

SCOTT GEOPHYSICS LTD.



- |         |         |
|---------|---------|
| 0-100   | 8-100   |
| 100-200 | 100-200 |
| 2-4     | 2-3     |
| 4-6     | 3-4     |
| 6-8     | 4-5     |
| > 8     | 5-6     |
|         | 6-7     |
|         | 7-8     |
|         | > 8     |

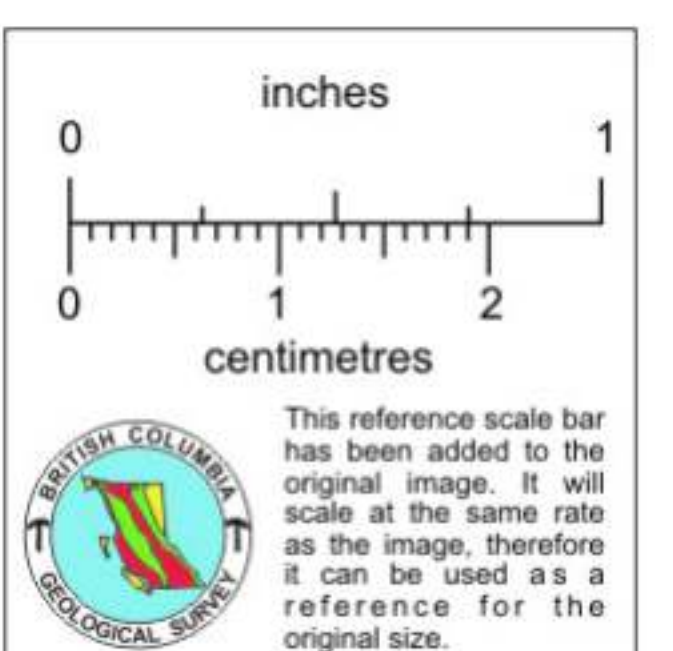


JC STEPHEN EXPLORATIONS LTD.  
 JUSKATLA INLET - BCI

INDUCED POLARIZATION SURVEY  
 Array: Pole-dipole CI pos: N Dir: S A= 25  
 Field: M7 Sep: 1  
 DATE: November 1, 1987  
 User: Alan Scott

Scale 1:2500

GOTT GEOPHYSICS LTD.



- < 2
- 2-3
- 3-4
- 4-5
- 5-6
- 6-7
- 7-8
- > 8