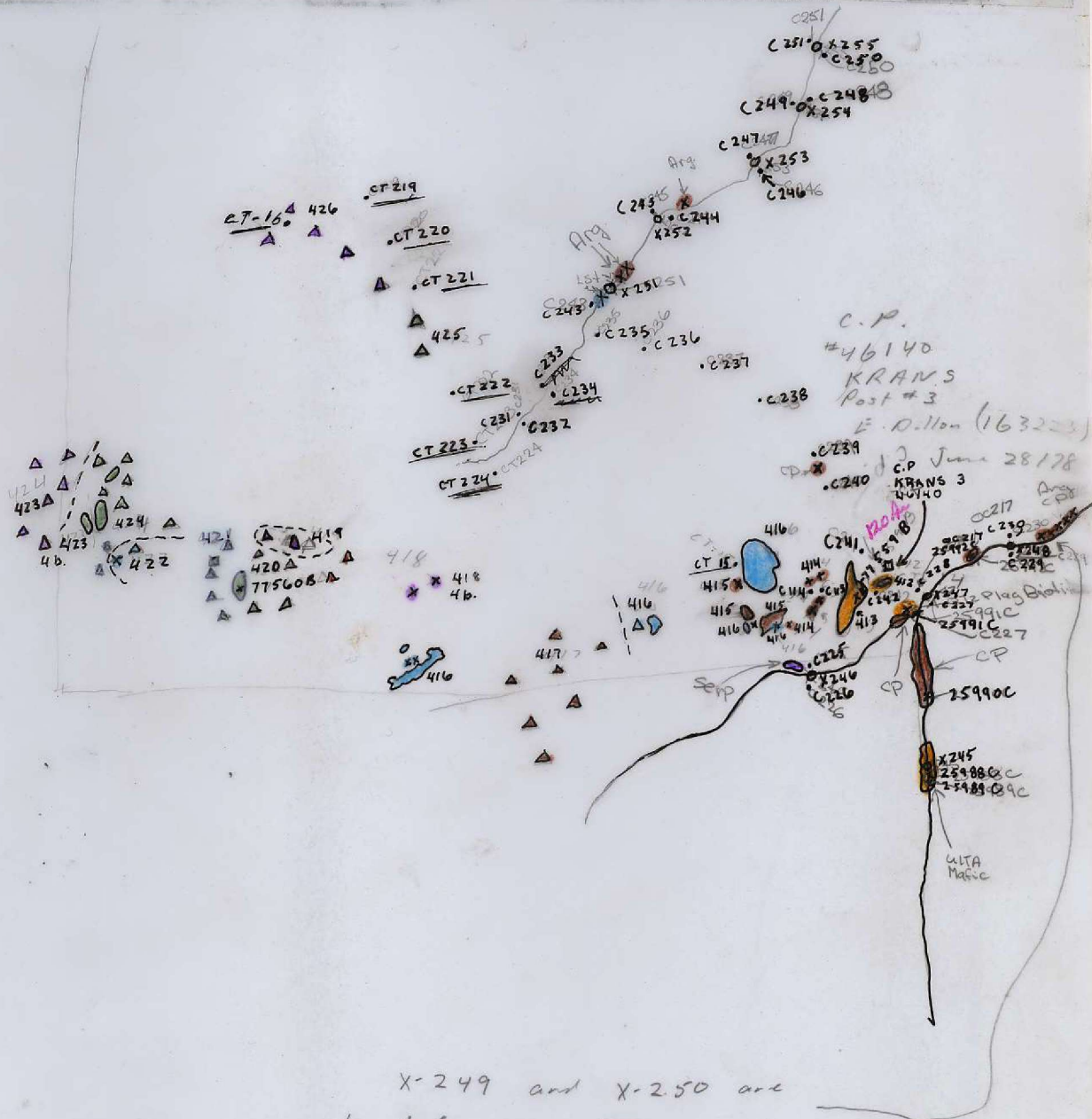


N  
↑



X-249 and X-250 are  
located approx. 500 m and  
1000 m downstream respectively  
from X-248

670126  
104N/15

104 N 15  
J. C. Stephen Expl.  
Camp Charlie  
Aug. 1981  
J. M., R. C., G. P.  
B. C. 5634 # 023  
marble dome.



Hirsh field

M.T. FARNSWORTH

LINE LAKE

ANGEL LAKE

M.T. SMALL PERCE

104 # 10, 11  
 J.C. Stephen Expl.  
 Camp Charlie  
 Hirsh field  
 July - Aug 1881  
 J.M., G.P.

B.C. 5677  
 # 025  
 Au Ag As



Z  
↑



J. C. Stephen Expl.

Hirst Field

Camps Charlie

Aug 181

J. M., G. P.

B.C. 5677

# 027

104 N 10, 11



McKinley Cr.

44  
1 camp.

77556 B  
77556 B



Fox Cr.

Bull Cr.

Bull Cr.

124 N II

J. C. Stephen Expl.

D. Donnel

Camp Charlie - Aug 1881

JM, RC, GP

B.C. 5677 # 029

Gladys  
Lake.



431  
K 77561 B/B  
438

5a.  
430

428  
429  
427  
CT-16  
420

E-ESKER

Caribou Cr.

N.



marble dome.

J. C. Stephen Expl.

Photo # 5634 053

Aug. 1981 104N15

NX Synd.

Camp Charlie

R.C. J.M. G.P.



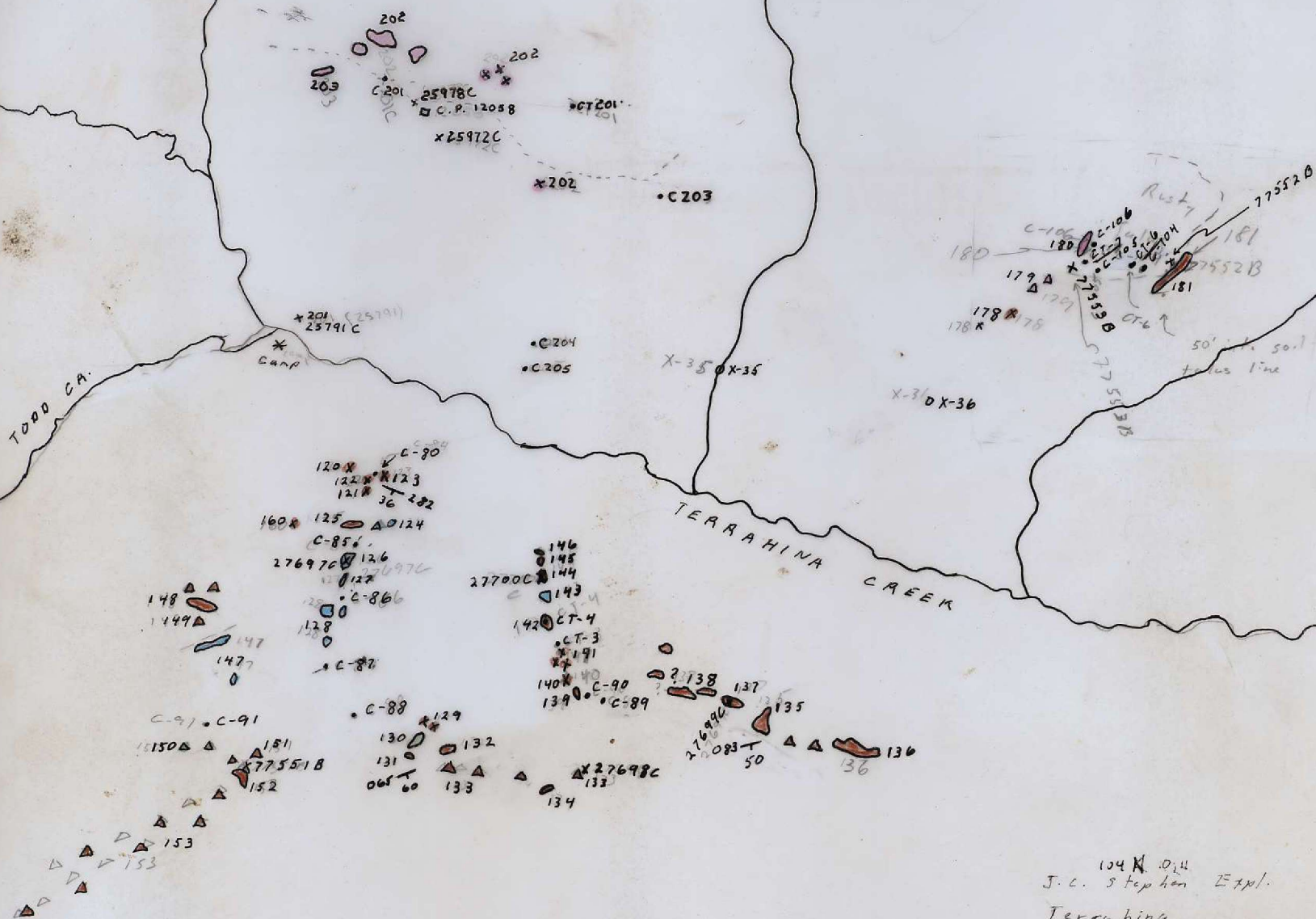






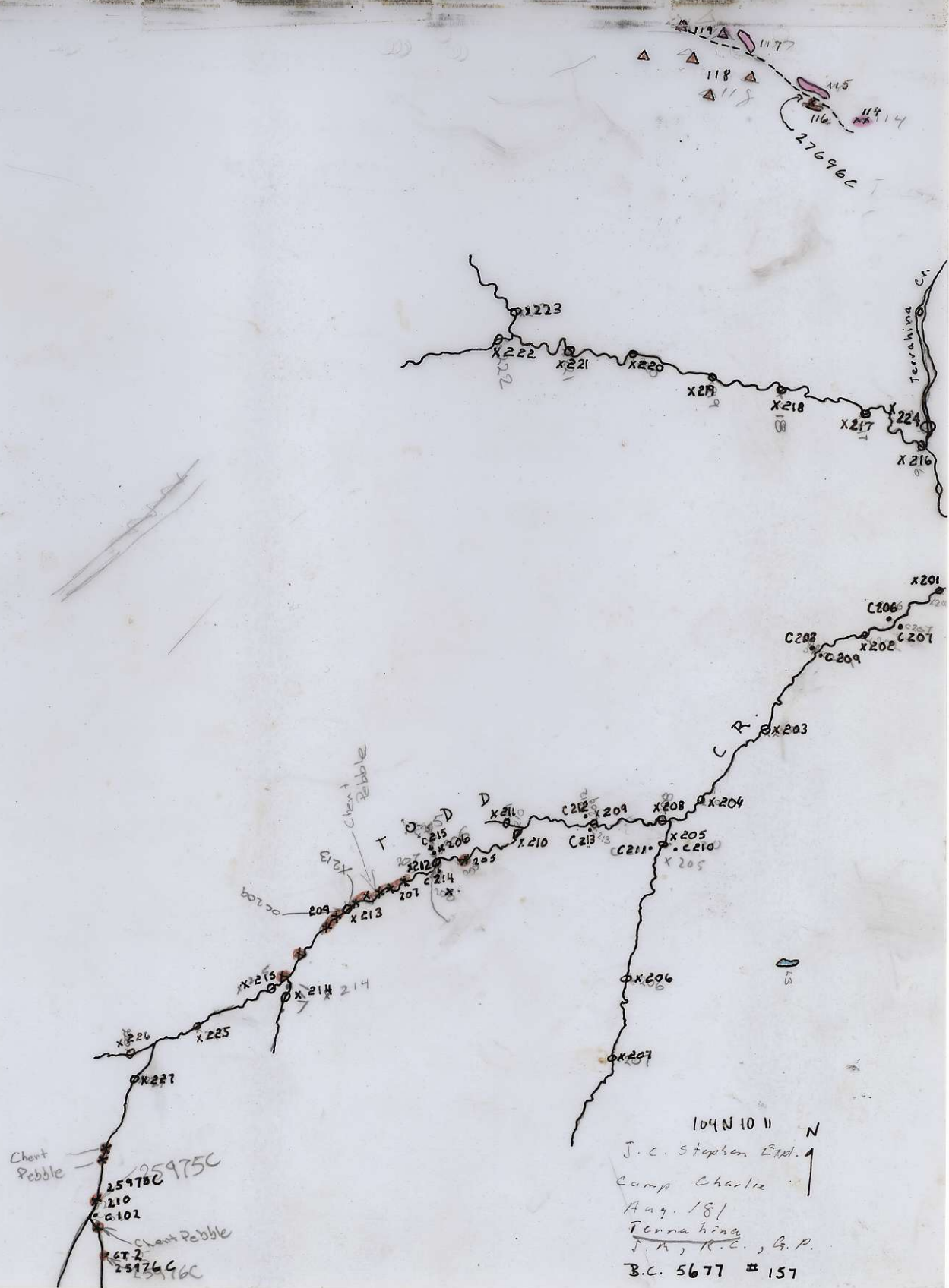






104 K 10/11  
J. C. Stephen Expl.  
Terrahina  
Camp Charlie  
Aug 181  
J. M., R. C., G. P.  
BC 5677 # 155

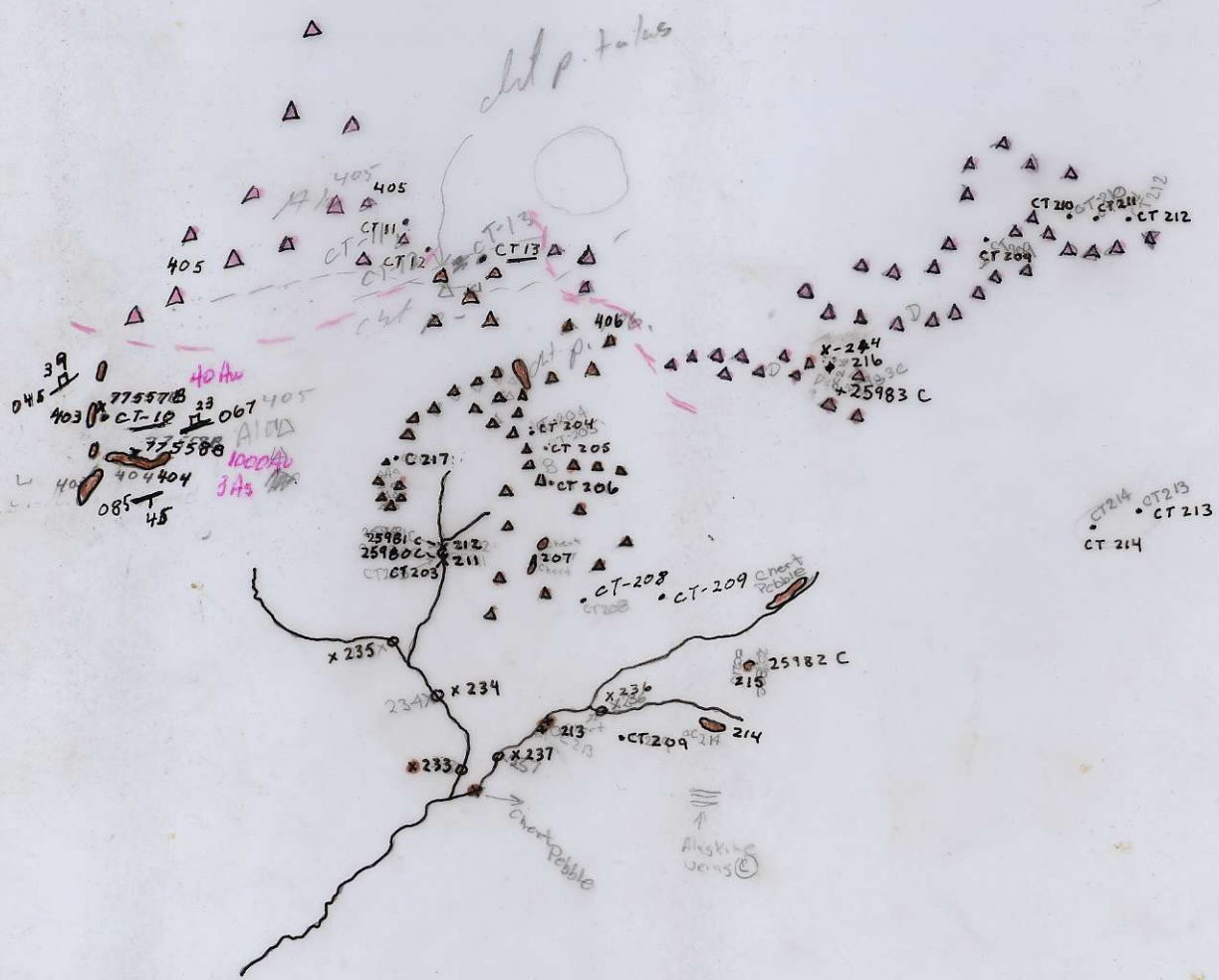




104 N 10 W N  
 J. C. Stephen Exp. ↑  
 Camp Charlie ↑  
 Aug. 18/ ↑  
 Terra-hina ↑  
 J. A., R. C., G. P.  
 B.C. 5677 # 157

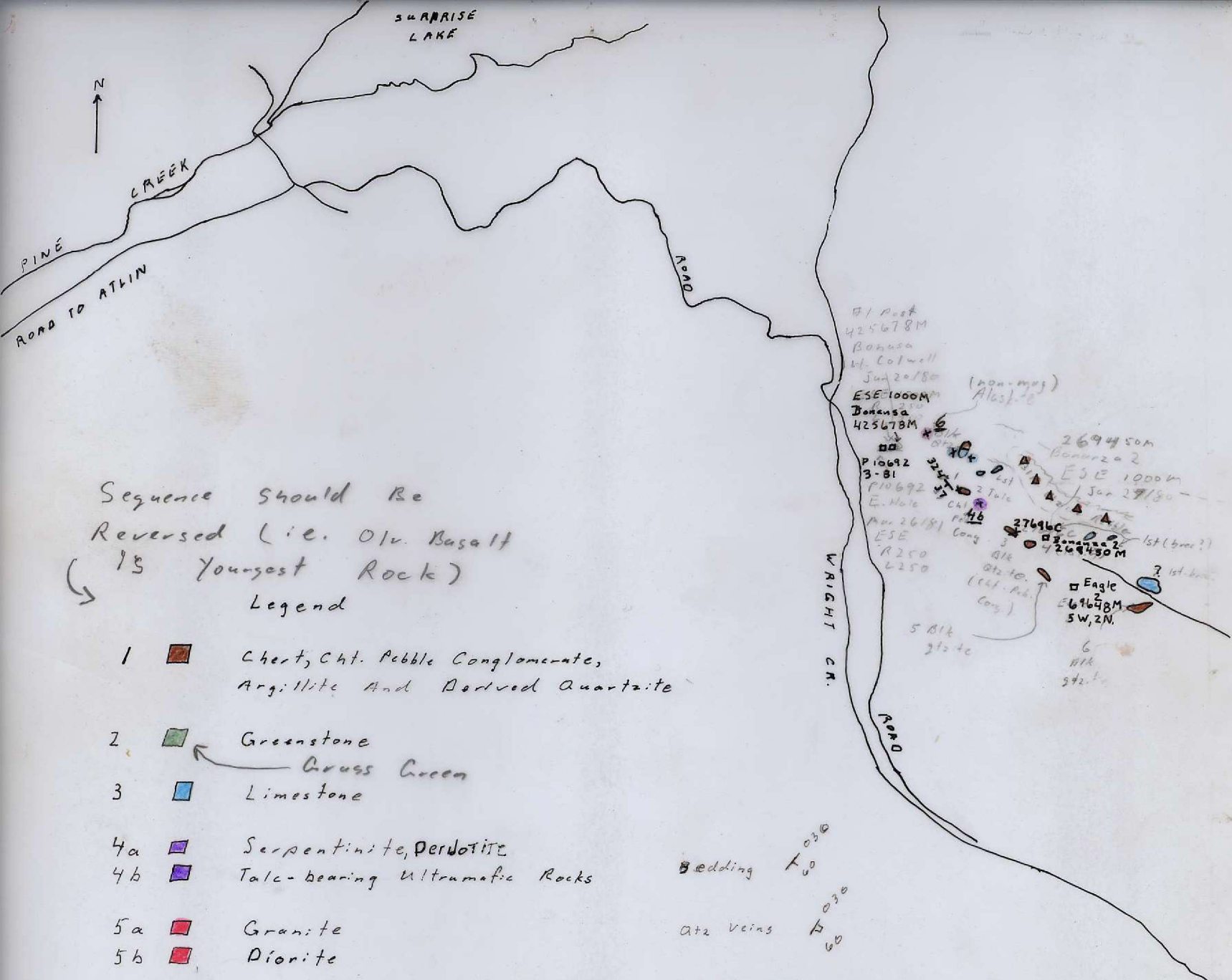


N  
↑



104 K/11  
J. C. Stephen Expl.  
O'Donnell  
Camp Charlie - Aug/81  
J M, R C, G P  
B C 5627 # 159





Sequence should be  
Reversed (i.e. Oliv. Basalt  
is Youngest Rock)

Legend

- 1  Chert, Chert Pebble Conglomerate, Argillite And Derived Quartzite
- 2  Greenstone  
    ← Gross Green
- 3  Limestone
- 4a  Serpentinite, Peridotite
- 4b  Talc-bearing Ultramafic Rocks
- 5a  Granite
- 5b  Diorite
- 6  Alaskite And Related Feldspar Rich Intrusives
- 7  Olivine Basalt  
    ← Dark Green

Bedding  $\frac{1}{60} \frac{030}{60}$

Atz veins  $\frac{1}{60} \frac{030}{60}$

Alaskite and Intermediate Intrusive veins or Dikes  $\frac{1}{60} \frac{030}{60}$

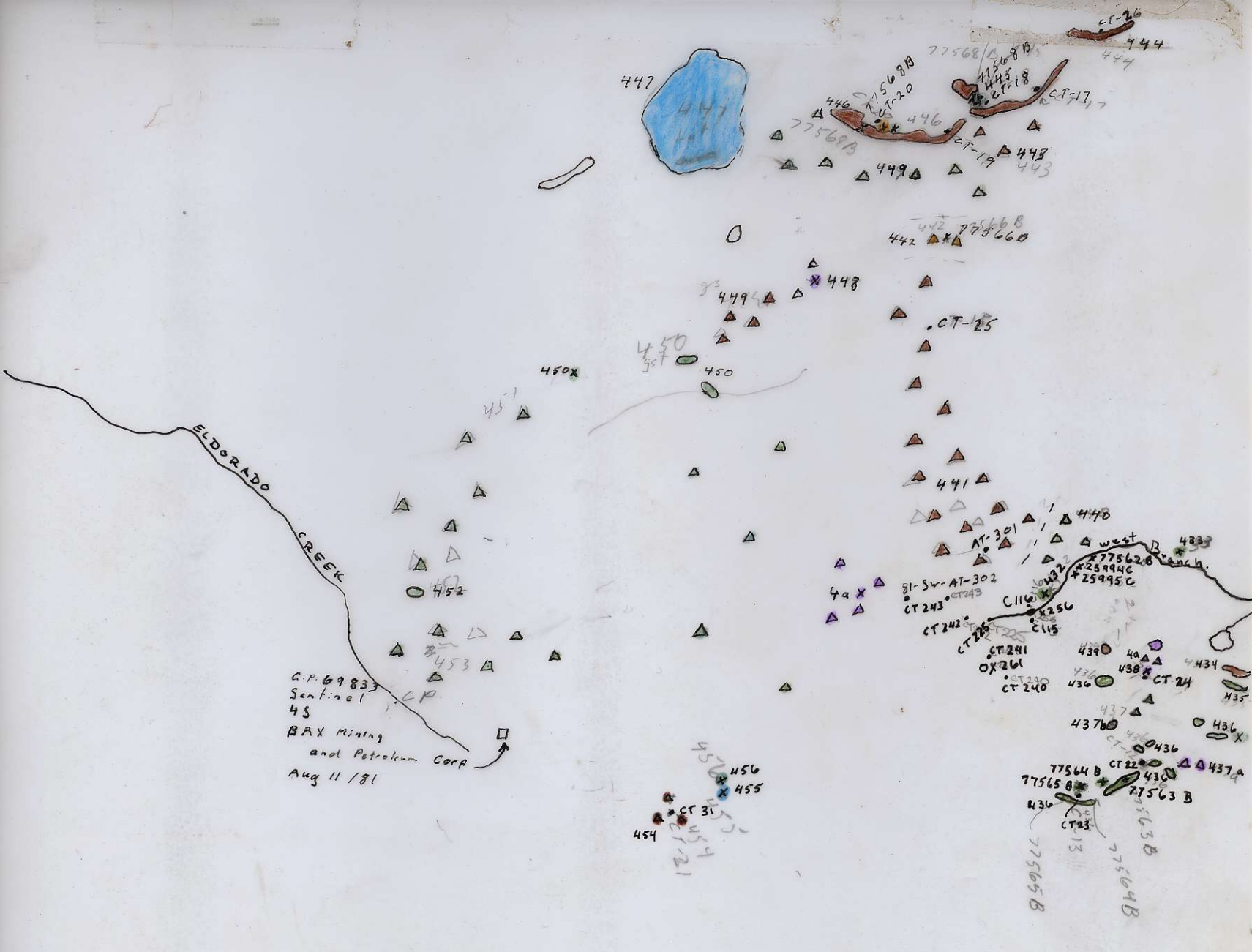
Joints  $\frac{1}{60} \frac{030}{60}$

104 N 11  
J.C. Stephen Expl.  
Idaho  
Camp Charlie - July 187  
G.P.  
B.C. 5677 \* 163





BL 5676 # 275  
NTS 104N  
CAMP CHARLIE  
JUNE, 1981



C.P. 69833  
Sentinel  
45  
BAX Mining  
and Petroleum Corp  
Aug 11/81

Spruce Wilson. N  
↑  
104 N/6  
J. C. Stephen Expl.  
Photo # 5674 - 275  
Camp Charlie  
Aug 1981.  
NX Syndicate.  
G.P. R.C. J.m.



Lst Outcrop  
Location Approximate

Blk. Chert Rubble  
x 27662C

Diorite

73665B

\* Camp Charlie

Lst Breccia  
Lst Breccia

02-302

x 73669 B

Greenstone outcrop  
Location Approximate

27666C

73665B

Lst.

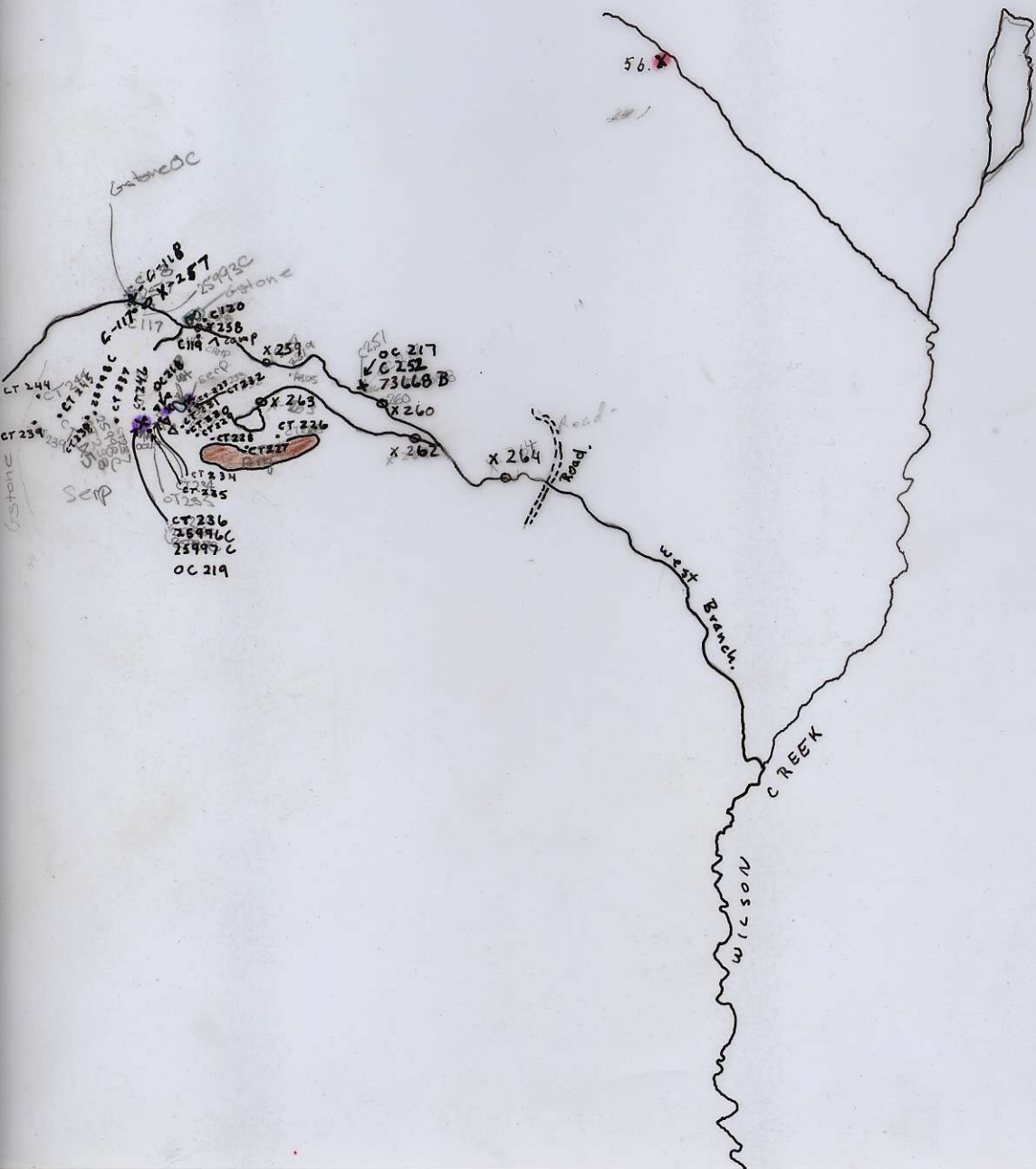
x 73667

x 73666b

Blk. Chert  
Loc. Apt.

BL 5676 # 277  
NTS. 104N  
CAMP CHARLIE  
JUNE, 1981





wilson Co.

104 N. 6

J. C. Stephen Expl.

Photo # 5676 - 277

Camp Charlie

Aug. 1981

R. C. G. P. J. M.