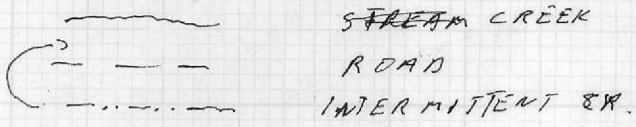
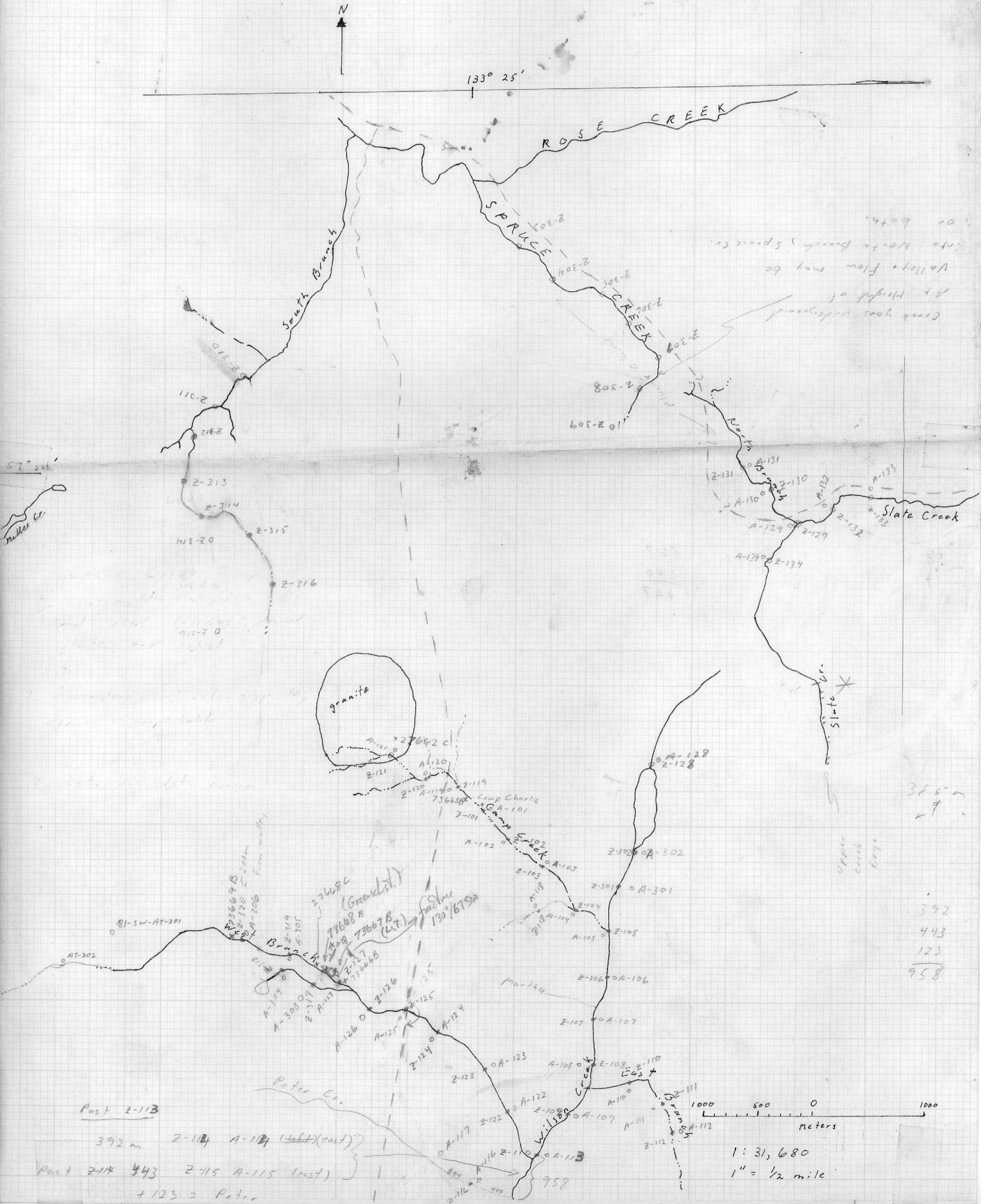


Legend

- A-101 - Soil
- Z-101 - Stream S:17
- △ AT-301 - T&Hs
- X # 27662 - Rock



J.C. STEPHEN EXPL. LTD.
~~SW PROS~~ S.W. PROSPECTING
 REGIONAL GEOCHEM. SAMPLING
 NTS 104N S
 SCALE 1" = 1/2 MILE NTS 104N
 MAPPED BY: G. PRIOR JUNE 1981
 SAMPLED BY: G. PRIOR
 M. MASSON
 N. SILINS
 J. LAWTON



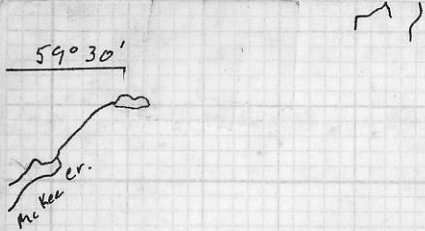
Creek has underground
 at height of
 Valley floor may be
 into North Branch, Spruce Cr.

57° 50'
 Peter Cr.
 118-20
 2-313
 2-314
 2-315
 2-316

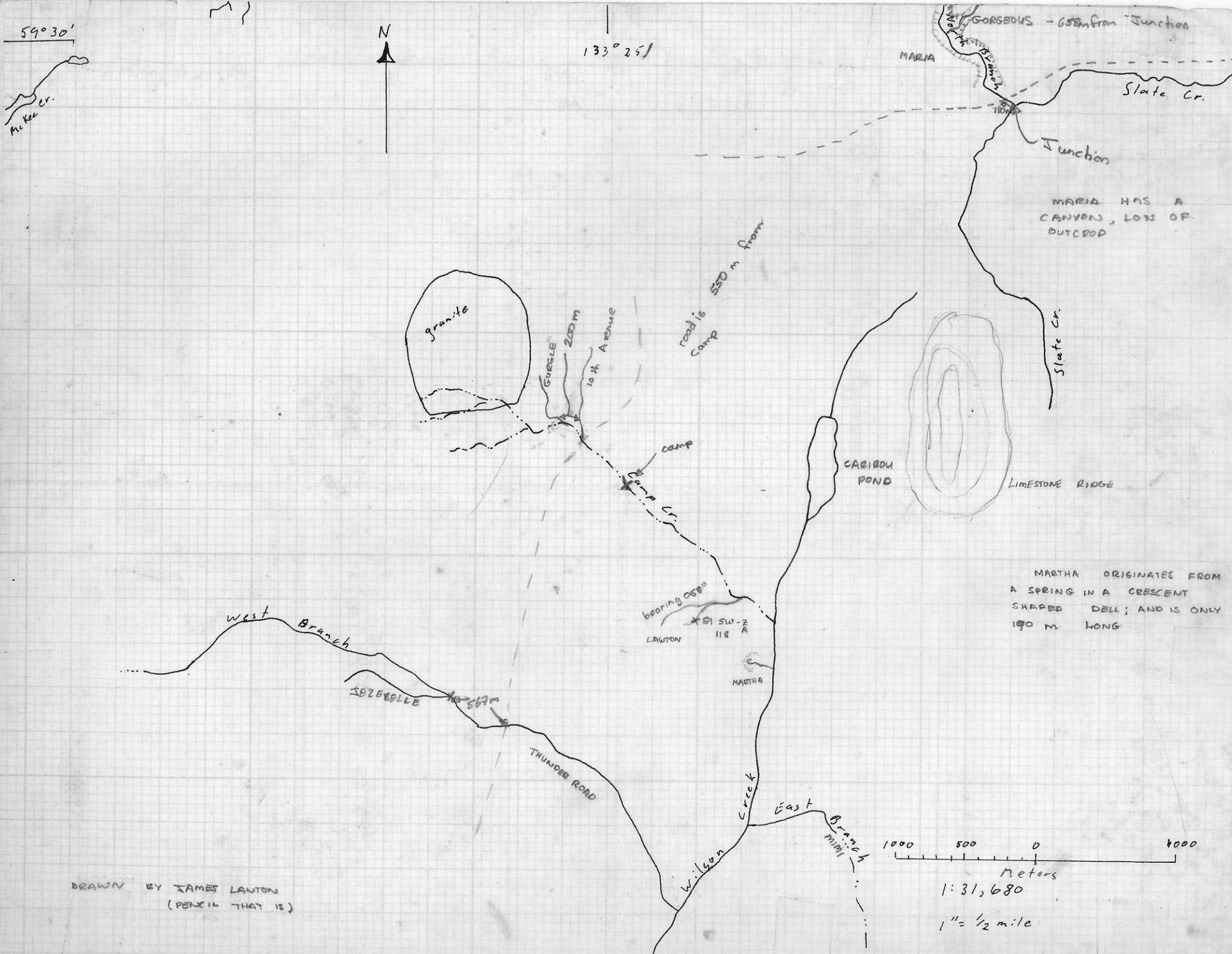
365 m
 392
 443
 123
 958

Past Z-113
 392 m Z-114 A-114 (left)(east)
 Past Z-114 443 Z-115 A-115 (east)
 + 123 = Peter

1:31,680
 1" = 1/2 mile



133° 25'



DRAWN BY JAMES LAUTON
(PENCIL THAT IS)

1000 500 0 1000
Meters
1:31,680
1" = 1/2 mile

XXXX

7046	7056	rock type - TILL	Zn-64	Cu-22	Pb-1	Ni-51	Co-10	Ag- 0.1	Mn-260	
7050		rock type - TILL	Zn-114	Cu-38	Pb- 4	Ni-91	Co-13	Ag- 0.1	Mn-475	5
7051		rock type * TILL	Zn-74	Cu-34	Pb-3	Ni-166	Co-17	Ag- 0.1	Mn-575	1
7053		rock type - XXXX CHRT	Zn- 140	Cu-64	Pb-11	Ni 730	Co-59	Ag-0.1	Mn-585	6
9052		rock type - CHRT	Zn-94	Cu-34	Pb-3	Ni-38	Co-7	Ag-0.1	Mn-405	
9053		rock type - TILL	Zn-82	Cu-26	Pb-2	Ni-140	Co-17	Ag-0.1	Mn-410	
9054		rock type - BSLT	Zn-112	Cu-44	Pb-3	Ni-310	Co-29	Ag-0.1	Mn-510	4
7054		rock type - CHRT	Zn-132	Cu-56	Pb-4	Ni-150	Co- 15	Ag-0.1	Mn-525	3
9051		rock type - TILL	Zn-148	Cu-66	Pb-6	Ni-39	Co-7	Ag-0.1	Mn-600	3.5
9506		no data listed								

