




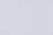


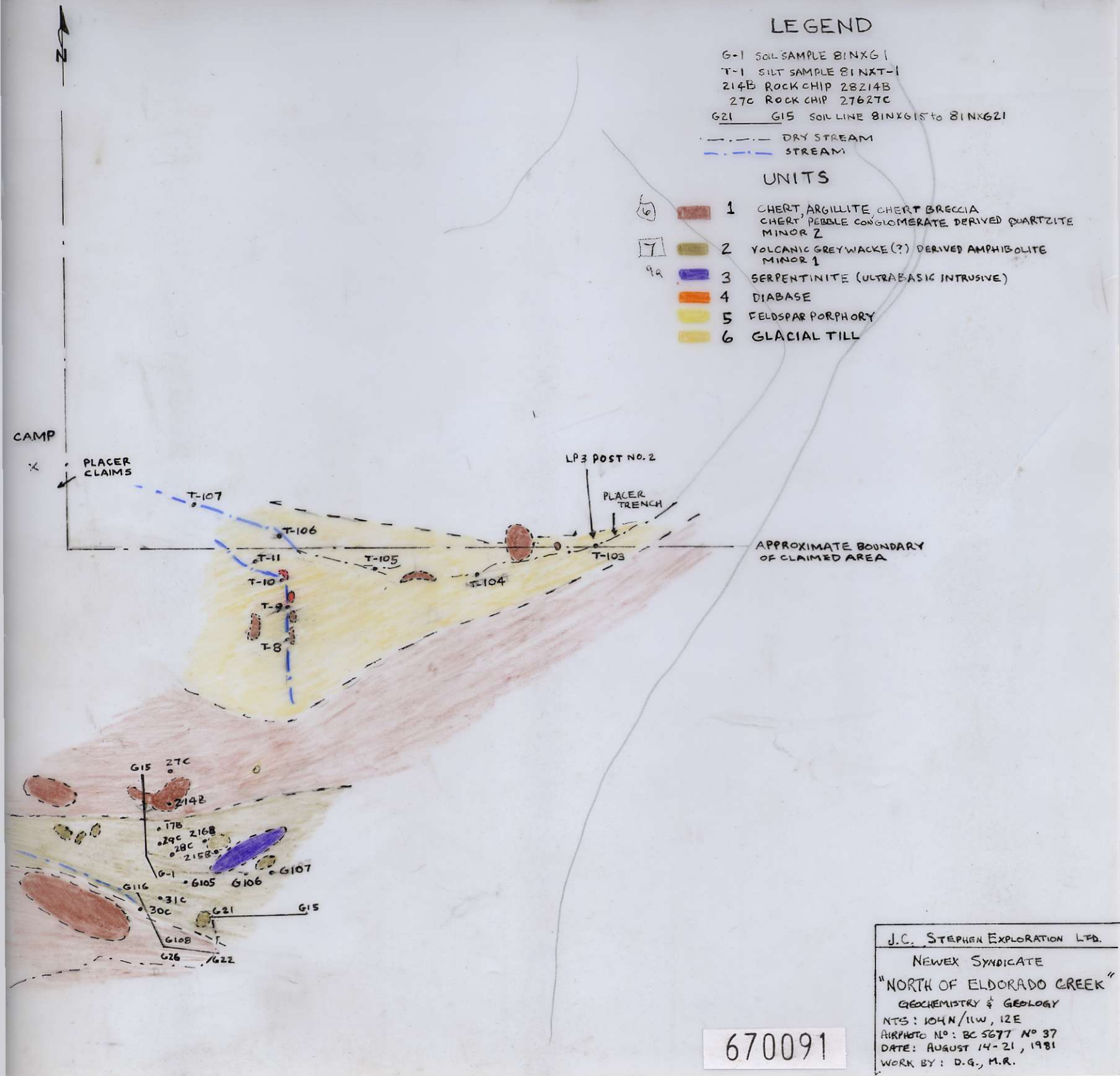
# LEGEND

G-1 SOIL SAMPLE 81XG1  
 T-1 SILT SAMPLE 81XGT-1  
 214B ROCK CHIP 28214B  
 27C ROCK CHIP 27627C  
 G21 G15 SOIL LINE 81XG15 to 81XG21

--- DRY STREAM  
 --- STREAM

## UNITS

- |   |   |  |
|---|---|--|
|  | 1 | CHERT, ARGILLITE, CHERT BRECCIA<br>CHERT PEBBLE CONGLOMERATE, DERIVED QUARTZITE<br>MINOR 2 |
|  | 2 | VOLCANIC GREYWACKE (?) DERIVED AMPHIBOLITE<br>MINOR 1                                      |
|  | 3 | SERPENTINITE (ULTRABASIC INTRUSIVE)  |
|  | 4 | DIABASE  |
|  | 5 | FELDSPAR PORPHYRY  |
|  | 6 | GLACIAL TILL   |



J.C. STEPHEN EXPLORATION LTD.

NEWEX SYNDICATE

"NORTH OF ELDERADO CREEK"

GEOCHEMISTRY & GEOLOGY

NTS: 104N/11W, 12E  
 AIRPHOTO NO: BC 5677 NO 37  
 DATE: AUGUST 14-21, 1981  
 WORK BY: D.G., M.R.

670091