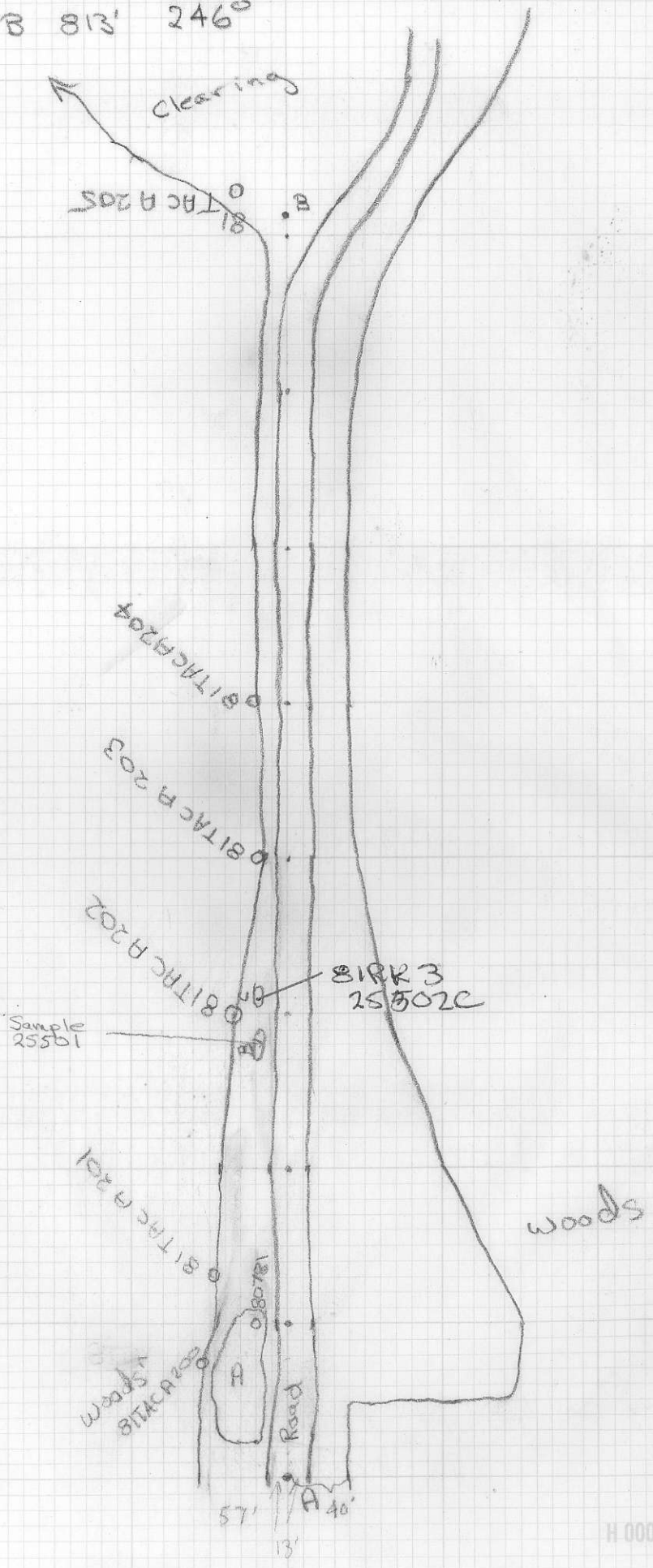


Sheet 1 Station A to B 813' 246°

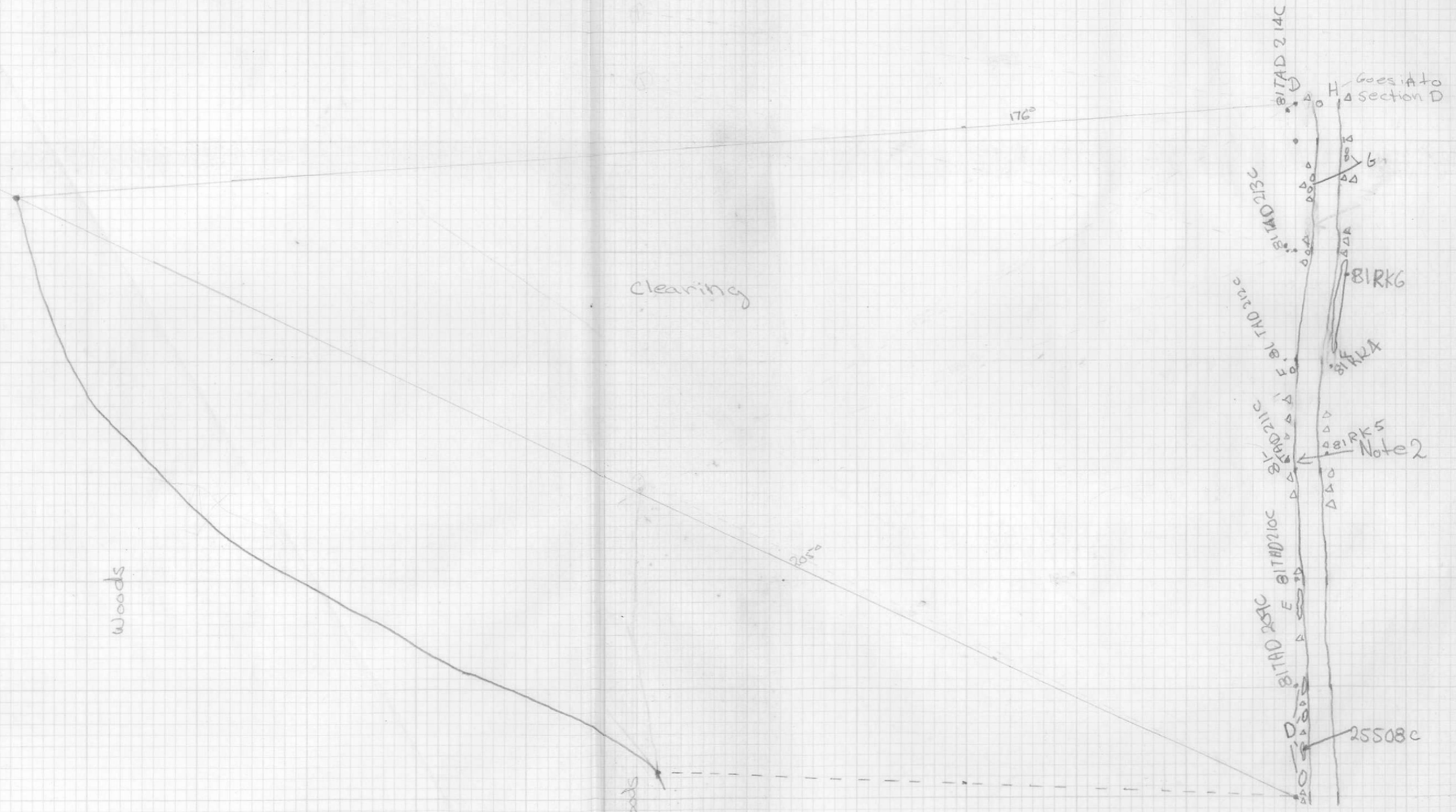


Sheet B Station B to C 617' Direction 263°



PRINTED ON CLEARPRINT 1000 H

Station C to D 633' 255°  
Sheet C

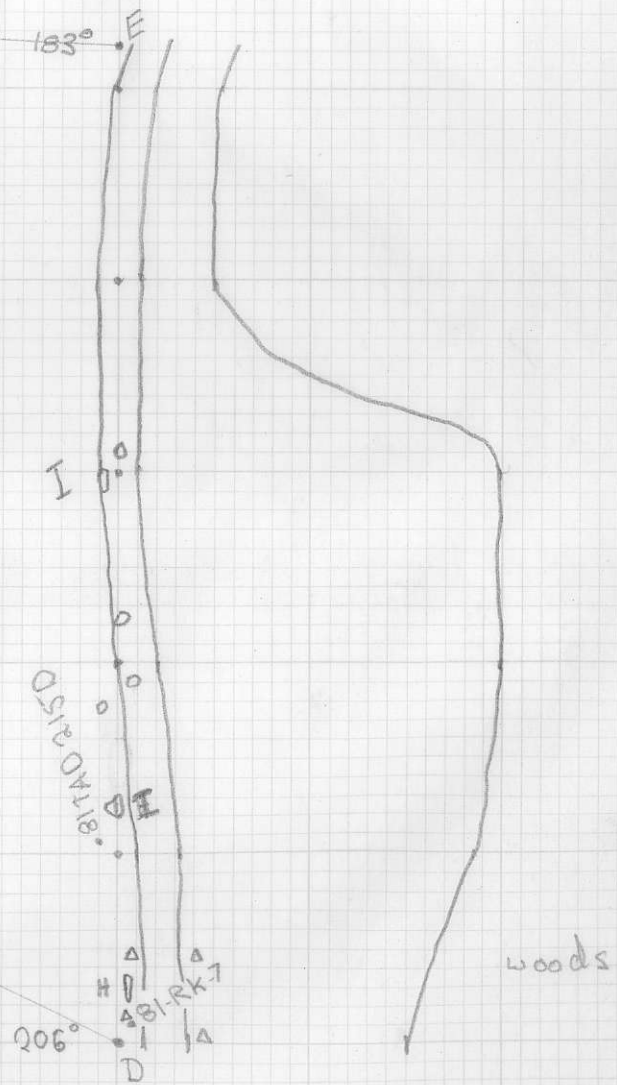


Sheet D Station D to E 524' at 252°

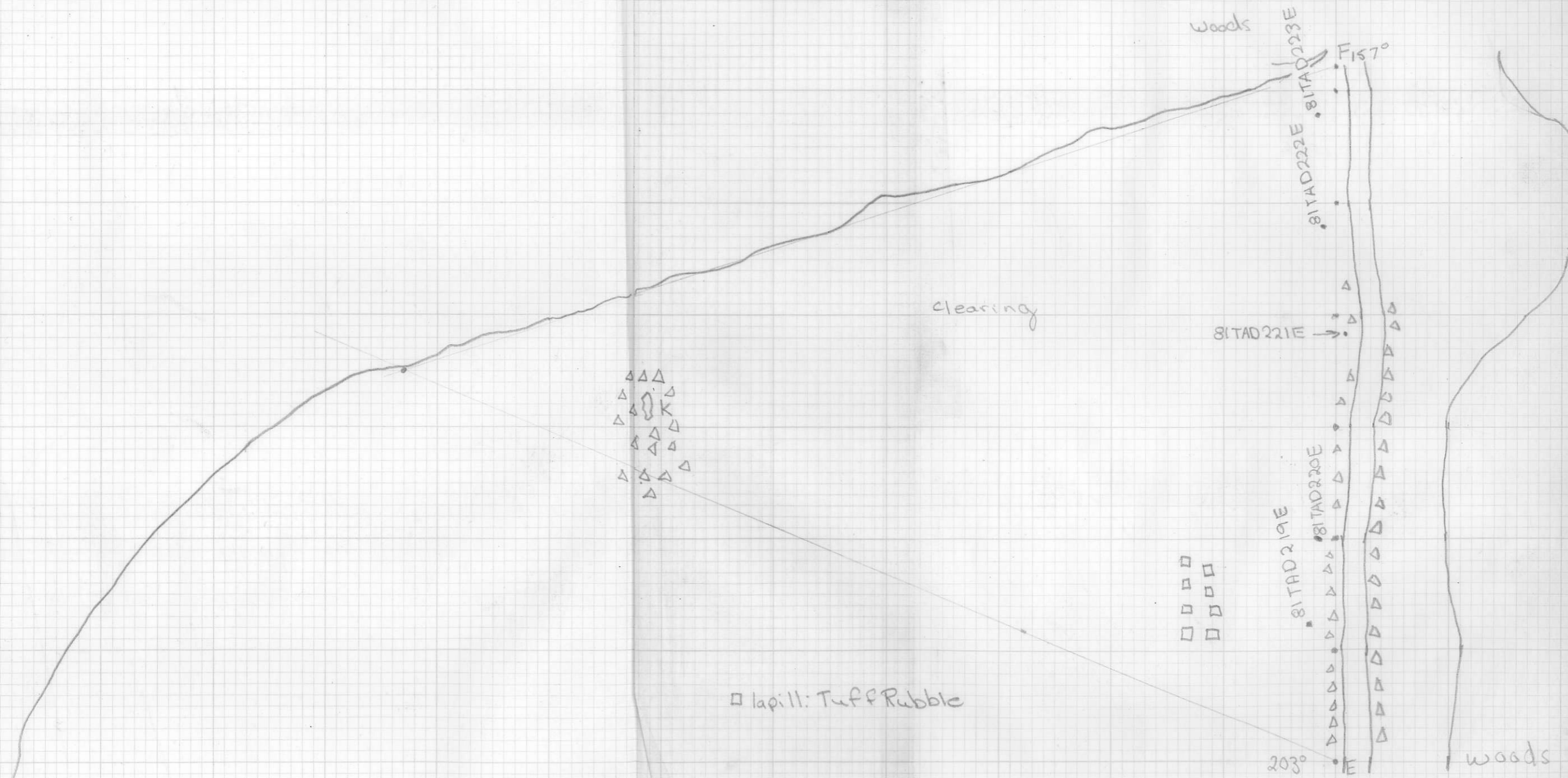


81TAD 219D

Ridge outcrop  
81TAD 216D  
Sample XII



Sheet E Station E to F 261° 621'



□ lapill: Tuff Rubble

Sheet F Station F to G

255° 500'

notes far as cut area  
Peter's cut swampy

145°

↑ up stream

161°

81TAD227E

Stream

drain  
trough

Stream

81-ST-1

3000

81TAD226F  
81TAD225F

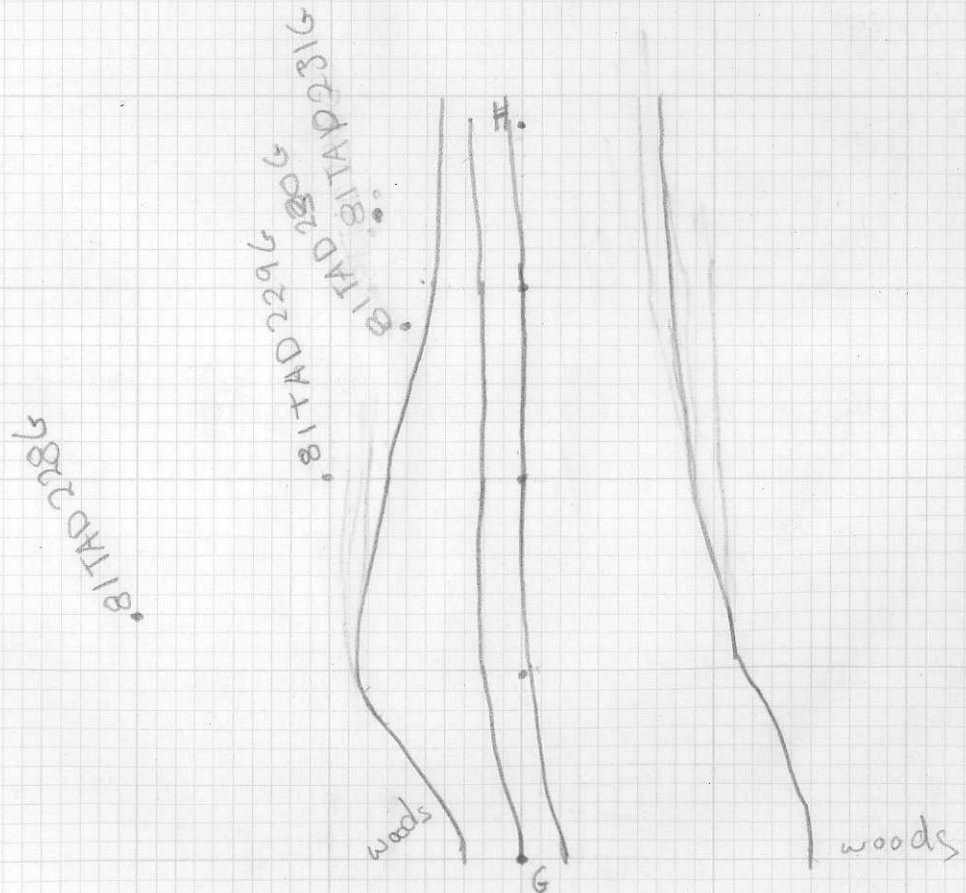
81TAD224F

swamp

woods

Sheet G Station G+H

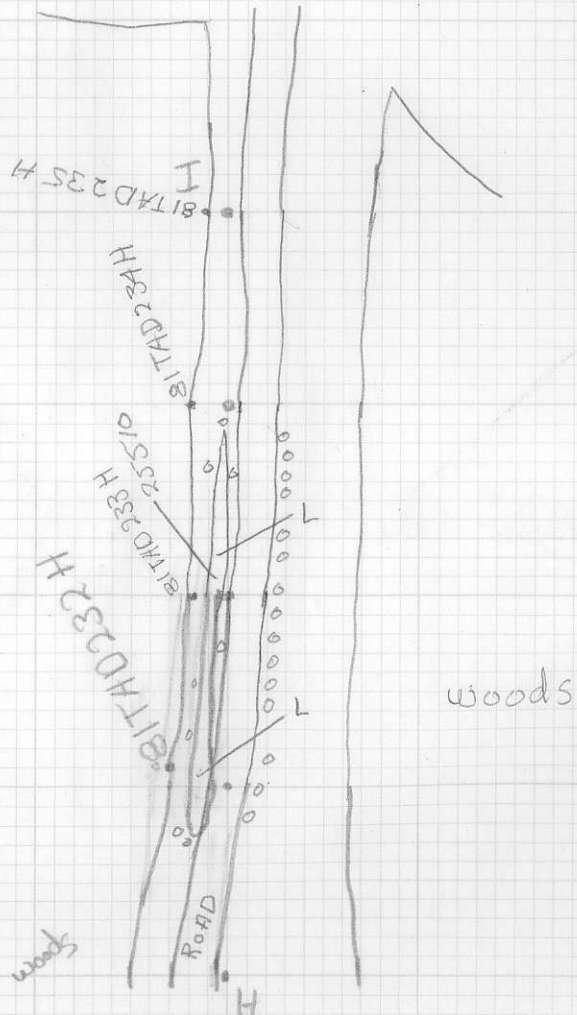
386' at 274°



Sheet H Station H to I 400' at 259°

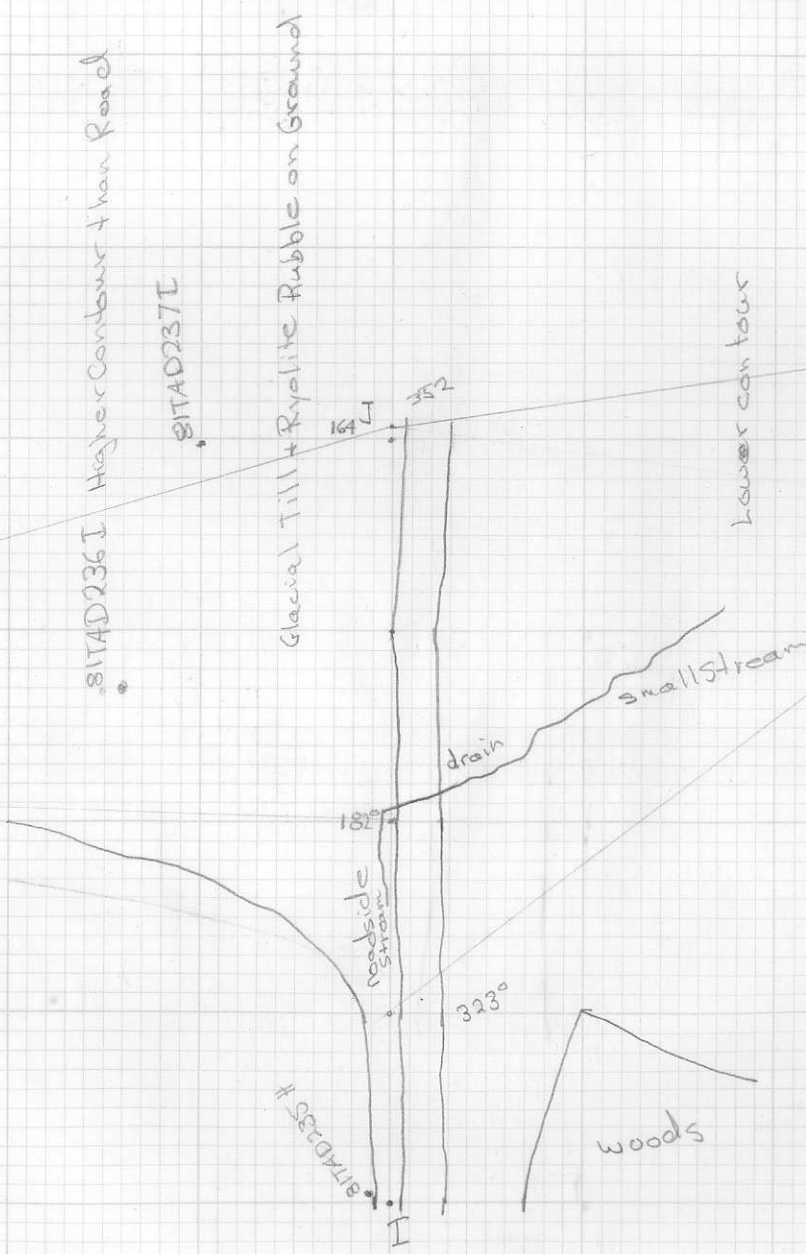
259  
15  
274

0 rubble of  
sparsy outcrop





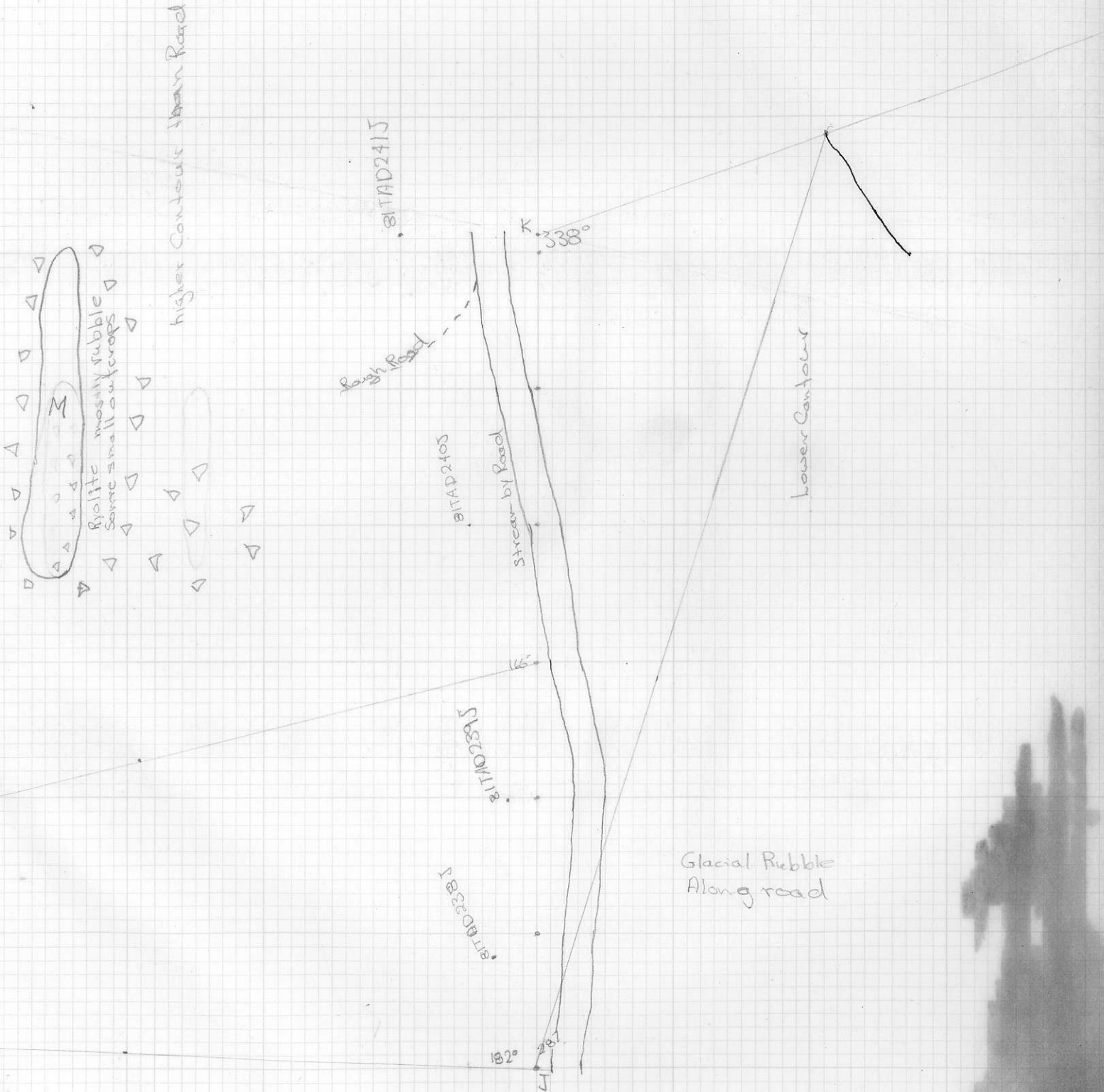
Sheet I Station I to J 407' at 255°



Sheet J

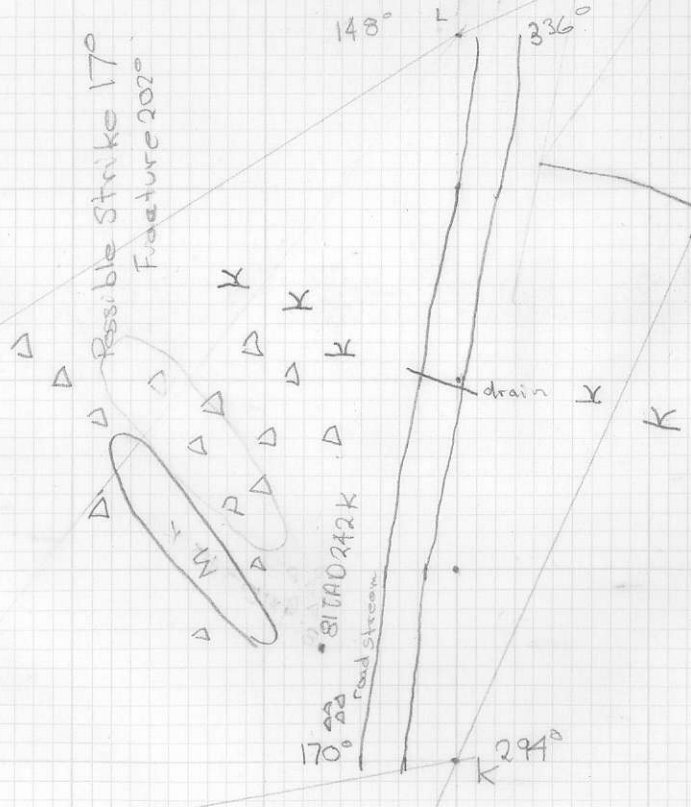
Station J to K

64' at 250°



Sheet K Station K to K

381' at 226°



Sheet h Station h to M 713' at 212°

Rhyolite rubble all over

ON

99° M

• 81TAD246

• 81TAD245

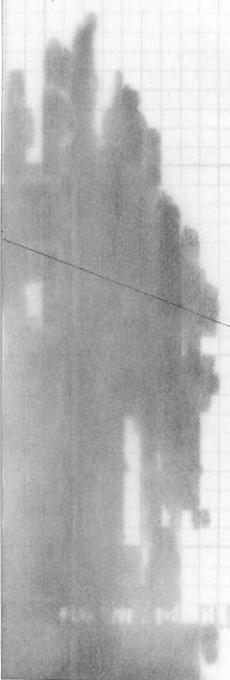
• 81TAD244

• 81TAD243

• 81TAD247

15°

woods



Sheet M Station M to N 448' at 220°

