

Box 13
Ref No. 10002

FILE

RECONNAISSANCE SAMPLING OF ANDESITE-BASALT
Pillow Lava Complex
Jarvis Glacier Area, B. C.
NFS 114P/7
February, 1982 J. J. McDougall

RECONNAISSANCE SAMPLING OF ANDESO-BASALT
PILLOW LAVA COMPLEX, JARVIS GLACIER AREA, B.C.

NTS 114P/7

February, 1982

J.J. McDougall

TABLE OF CONTENTS

	<u>Page</u>
INTRODUCTION	1
LOCATION & ACCESS	1
AREA SAMPLED	1
ASSAYS	3
RESULTS	3
CONCLUSIONS	3

Figures

Figure W.C. 9/81b Preliminary Geological Map	2
Figure 2/81	3

INTRODUCTION

A volcanic complex mapped by the G.S.C. as the equivalent of that hosting the Windy-Craggy deposit occurs to the west and southwest of Jarvis Glacier which is about 7 miles south of the Maid of Erin property in Northwestern B.C.. Noranda has located claims in the area, possibly because of proximity to a local gold prospect. Because of the similarities plus the recorded occurrence of massive(?) pyrrhotite float on the glacier, a prospecting programme was envisioned during the 1981 field season but failed to materialize due to a time shortage. In lieu of the program, a quick recce trip was carried out to obtain and test sulphide-bearing float for any similarities with the Windy-Craggy i.e. cobalt content, etc.

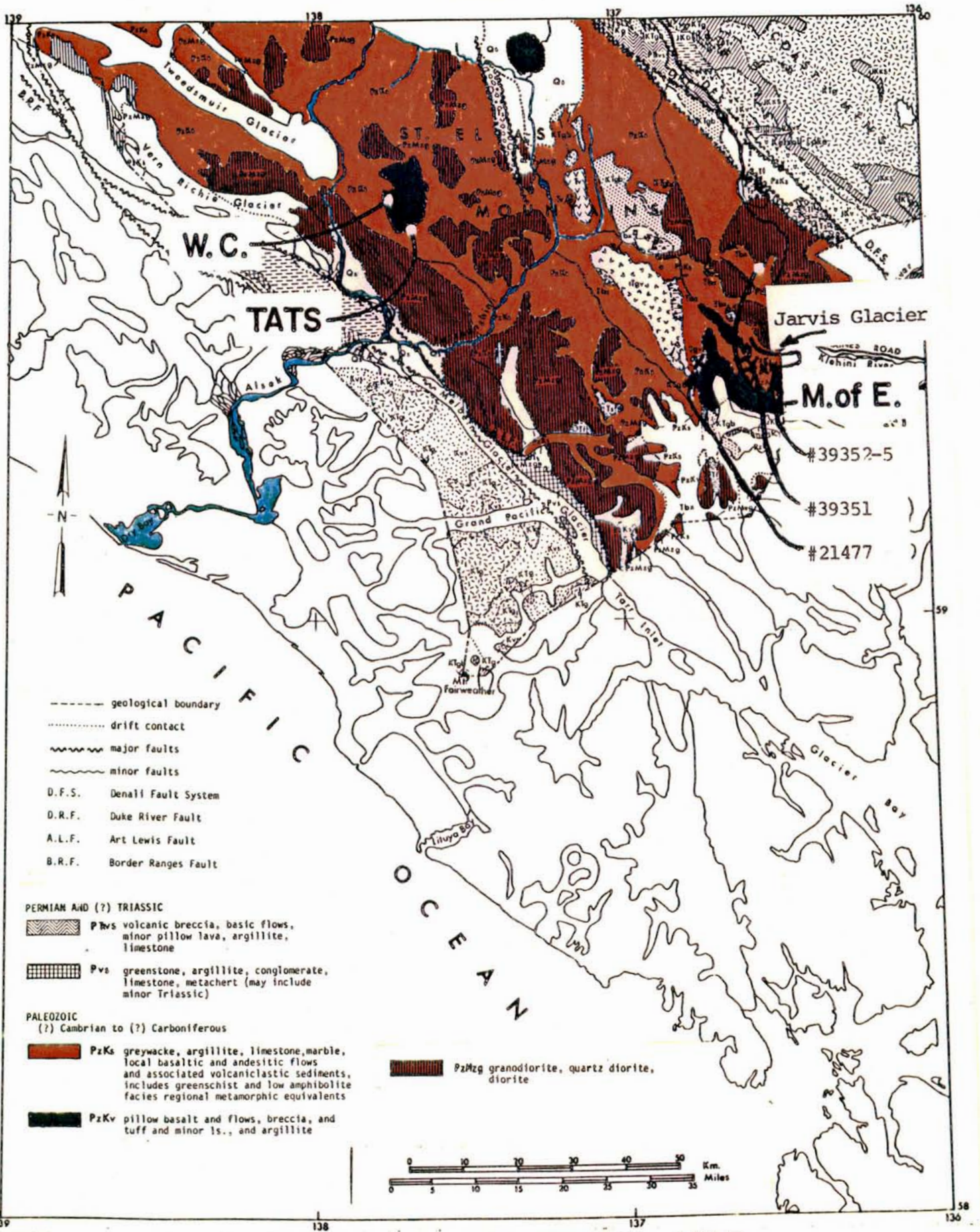
One trip was made into the glacier (JW, JG, JM) but cloud cover prevented any useful bedrock recce. A number of samples were collected, however, representing several float trains emerging from the complex.

LOCATION & ACCESS

The Pillow Lava Complex centres around Mt. Bigger about 16 km west of the Customs Station at Pleasant Camp on the Haines Highway. Float sampling was done on Jarvis Glacier about 8 km by helicopter west of Pleasant Camp. A mining access road was put in along the north moraine of the glacier some years ago to allow tests of a gold showing but the road is now impassable.

AREA SAMPLED

Sulphide-bearing float was searched for and collected in three areas on the glacier. These are plotted on Map W.C. 9/81(b). In 1980 the writer collected a silt sample on the western side of the complex about 16 km west of Jarvis Glacier, the results of which are also included.



PRELIMINARY GEOLOGICAL MAP

ASSAYS

Five samples were collected and standard assays carried out for gold, silver, copper and cobalt as per Fig 2/81.

FIG 2/81

#	LOCATION	DESCRIPTION	Au oz	Ag oz	Cu%	Co%
39351	Jarvis Glacier Central (Map JG 1/81)	10% diss. pyrr, pyrite in schistose rhyolite	L.002	0.04	0.01	0.01
39352	"	" Massive pyrr (50%) in quartz	L.002	0.08	0.10	0.02
39353	South Central	Diss pyrite (15%) as cubes in grams	L.002	0.02	0.02	0.01
39354	"	" 10% diss py, pyrr, minor cpy in grey schistose volcanics	.005	0.79	1.08	0.01
39355	"	" vuggy, sl pyritic rusty quartz	L.002	0.02	-	-
21477	Noland River Tributary	Silt in volcanic area showing weak pillow development	-	0.2	64	
					Pb=8ppm	Zn=70ppm
					Mn=815ppm	

RESULTS

No Windy-Craggy type sulphides were located during our limited sampling on Jarvis Glacier. The pyrrhotite sampled was not cobaltiferous. Huge blocks of pillow lavas resembling that near Windy-Craggy (Tats) were noticed, however.

CONCLUSIONS

Sulphides are not as evident in glacial moraine associated with the area west of Jarvis Glacier as they are at Tats.

Neither the area nor even the glacier have as yet been explored in adequate detail for evidence of massive sulphides.