

N.T.S. 82-M-7/w

REPORT  
ON  
GEOCHEMICAL SURVEY  
ON  
"ZAN" CLAIMS

---

Kamloops  
MINING DIVISION

H. R. MORRIS,  
GEOLOGIST.

GEOCHEMICAL SURVEY ON "ZAN" CLAIMS

C O N T E N T S

	<u>Page</u>
Introduction .....	1
Method of Survey .....	1
Interpretation of Results .....	2
Statement of Work Done .....	3
Statement of Qualifications .....	4
Professional Experience .....	4

Maps Accompanying Report -

Location Map (Scale 1" - 1320')

Part of ZAN Group: Geochemical Survey (Scale 1" - 400')

Vancouver, B. C.  
July 15, 1963.

H. R. Morris,  
Geologist.

## GEOCHEMICAL SURVEY ON "ZAN CLAIMS"

### INTRODUCTION

The "ZAN" group of claims adjoins the "Cottonbelt" property, and covers part of the southern valley slopes of Blais and Deep Creeks, 42 miles northwest of Revelstoke, B.C.

Between May 26 and July 2, 1963 a series of soil tests for total heavy metal content was carried out on the western part of the property. A surveyor and a specially qualified prospector (with their respective helpers) were on the property for this period, while in addition about 10 days of the writer's time was spent in geological examination, and in planning the layout of the survey.

Lines trending north and spaced at 400 feet intervals along an easterly baseline, were cut through the bush and picketed. Together with the chained baseline and boundary traverses these lines total over 80,000 feet in length. Their relation to the claim boundaries is shown by the location map attached to this report.

### METHOD OF SURVEY

Samples of the sub-humus mineral soil layer were collected at 100-foot intervals on all picket lines and put into individual polyethelene bags. At the end of each day's sampling, the total heavy metal test was made, as follows:

By using a standard scoop, 0.2 gm. of soil from the sample is put into a stoppered tube and shaken up for 30 seconds with 5 ccm. of ammonium citrate buffer solution.

Dithyzone reagent is then added (1 ccm xylene solution) and after a further 30 seconds of shaking the dithyzone colour is compared to a graded scale -

- |                  |                  |
|------------------|------------------|
| 1) green         | (low lead-zinc)  |
| 2) grey-green    |                  |
| 3) grey          | (medium)         |
| 4) grey-blue-red |                  |
| 5) bluish-red    |                  |
| 6) bright red    | (high lead-zinc) |

The figures shown on the 1" - 400 foot map correspond to this scale.

#### INTERPRETATION OF RESULTS

The purpose of the survey was to trace the "Cotton-belt" and "Complex" veins, (both of which carry galena, sphalerite and magnetite in varied amounts) through the overburden covering the western part of the "ZAN" claim group. In the eastern part of the group the veins have been traced by early surface work by other companies (see B. C. Minister of Mines Report for 1927, p.p. C.195 to C.197), and in addition the limestone layers, which appear to be parallel to the veins throughout their known length, are clearly visible on air photographs. The present survey shows, by the relatively high heavy metal content of soils on the strike extension of the veins, that the veins continue in a westerly direction and are more-or-less parallel

to each other to about the middle of the area covered. At the north-western edge of the survey area the heavy boulder overburden in Blais Creek may have prevented the detection of the lead-bearing veins, or alternatively they may come to an end before reaching the creek bottom.

STATEMENT OF WORK DONE

W. R. Schwartz, prospector and geochemical operator May 28 - July 2, 1963.	35 days @ \$15.60	\$546.00
H. Muller, prospector's helper May 28 - July 2, 1963.	35 days @ \$12.00	\$420.00
D. P. Highe, surveyor May 28 - July 2, 1963.	35 days @ \$15.00	\$525.00
P. Lawrence, surveyor's helper May 28 - July 2, 1963.	35 days @ \$12.00	\$420.00
H. R. Morris, geologist. May 28 - June 1, 1963. June 28 - July 2, 1963.	10 days @ \$21.00	<u>\$210.00</u>
		<u><u>\$2121.00</u></u>

STATEMENT OF QUALIFICATIONS  
H. R. MORRIS, GEOLOGIST

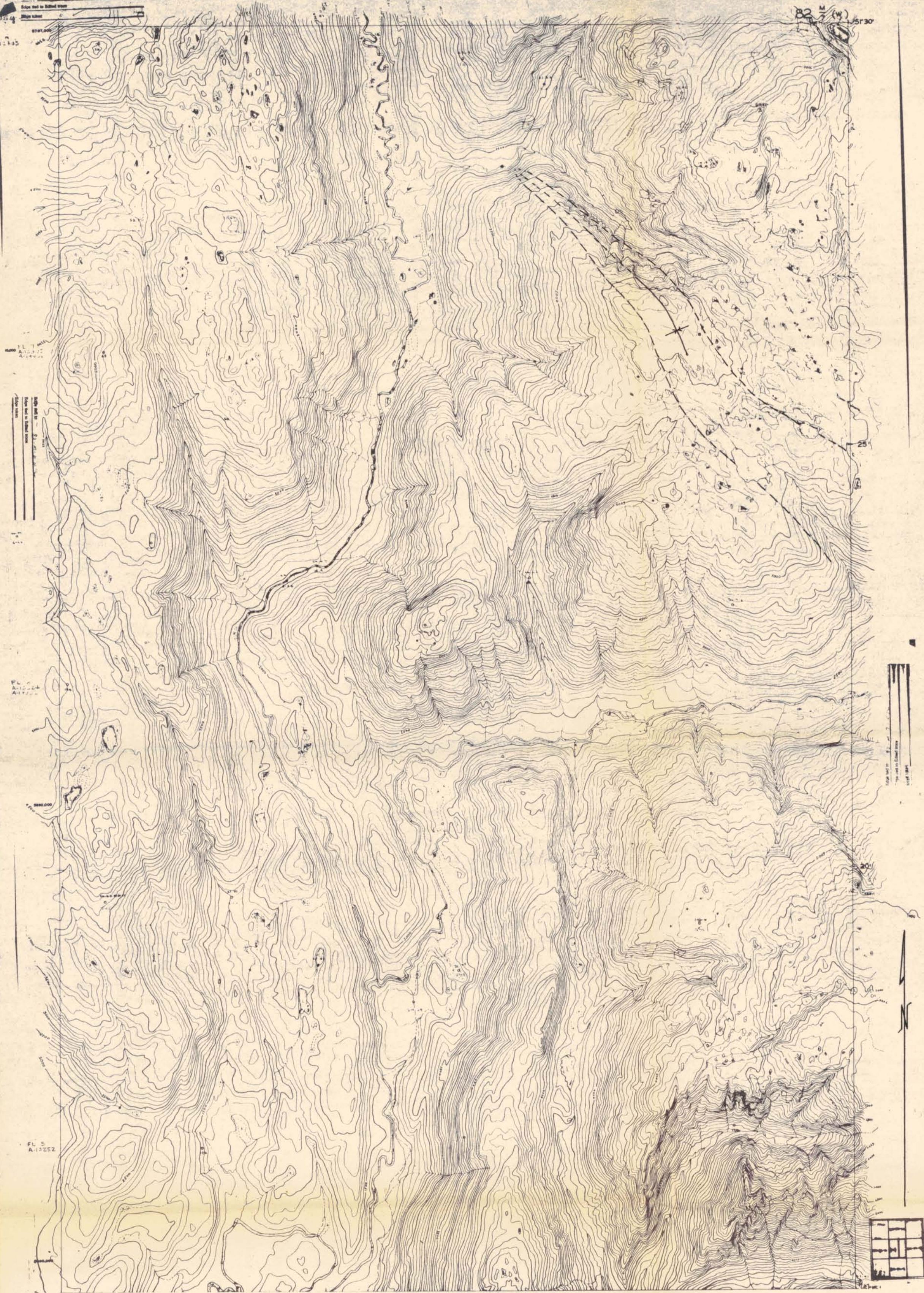
1. Graduated B. Sc. in Mining Geology from University of London, England, August 1950.
2. Attained Associateship of the Royal School of Mines, London, August 1950.
3. Graduated M.A. Sc. in Geological Sciences from University of Toronto, Ontario, May 1956.
4. Associate Member of the Institution of Mining and Metallurgy since 1959 (Student Member 1950-59)
5. Fellow of the Geological Association of Canada since 1957.

PROFESSIONAL EXPERIENCE

1. 1950-1954 - Geologist, Colonial Development Corporation, engaged in mineral exploration in East Africa.
2. 1955 - Contract Field, Geologist, Faraday Uranium Mines Limited, Ontario.
3. 1956-1960 - Geologist, Ventures Limited, engaged in exploration in Noranda district, N.W. Quebec.
4. 1961-1963 - Geologist, Ventures Limited and Falconbridge Nickel Mines Limited, engaged in exploration in southern British Columbia.

Vancouver, B. C.  
July 15, 1963.

H. R. Morris,  
Geologist.



*Fig. 2 Cottonbelt (Zan Gp.) Structure*

*Showing probable syncline as outlined by limestone marker bed - paralleling known showings in part. Indicated position of nose assumed.*

*0 1 2 3 miles*