
 SHOWINGS  
 ANOMALIES

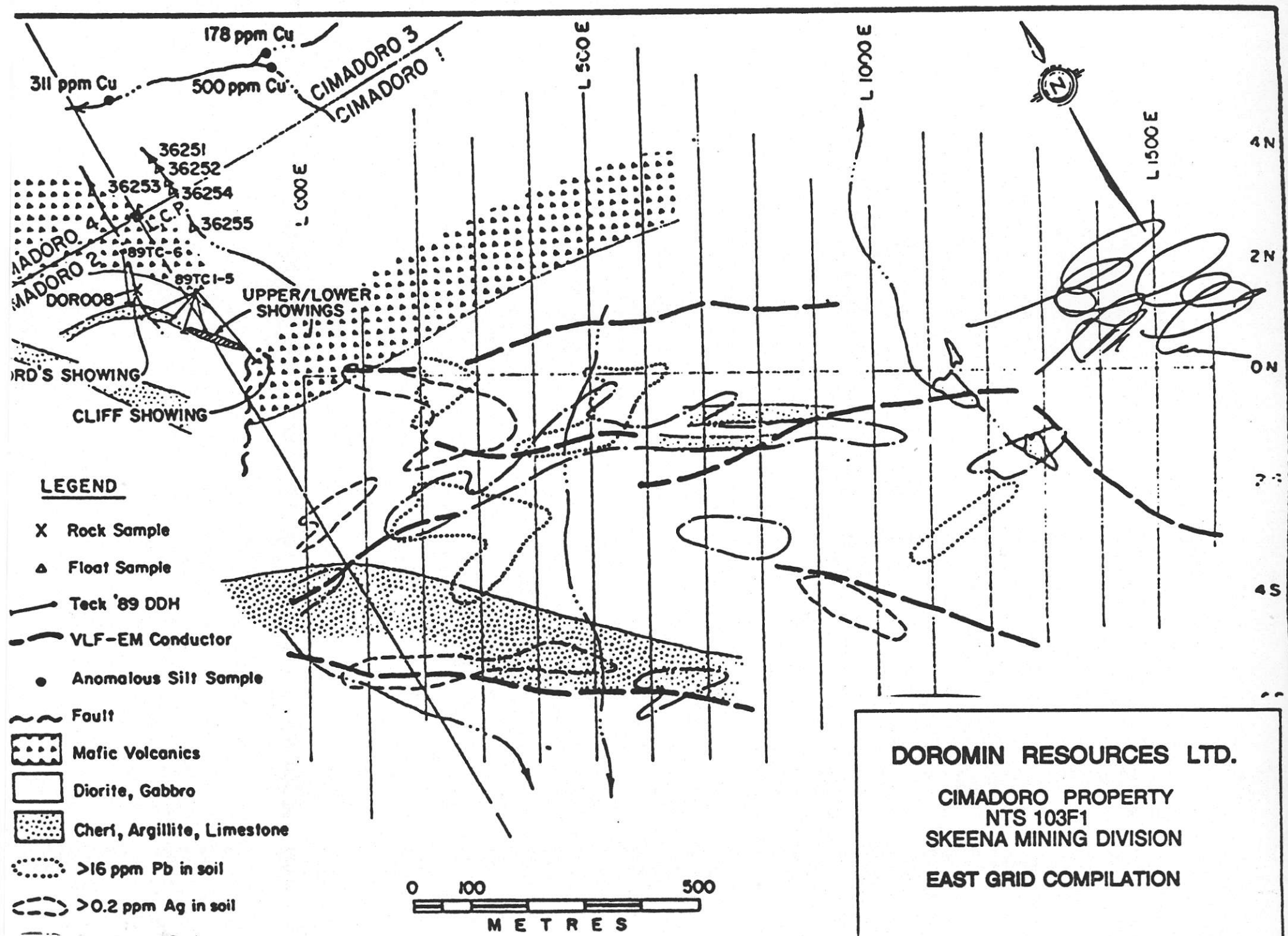
**DOROMIN - INCO**

**CLAIM STATUS  
CIMADORO PROPERTY**

103 F 1 521728

Scale 1:100000  
 0 500 1000 2000m

**DOROMIN**



178 ppm Cu  
 311 ppm Cu  
 500 ppm Cu

CIMADORO 3  
 CIMADORO 1

36251  
 36252  
 36253  
 36254  
 36255  
 89TC-6  
 89TC1-5

CIMADORO 4  
 CIMADORO 2  
 DOROC8

UPPER/LOWER SHOWINGS

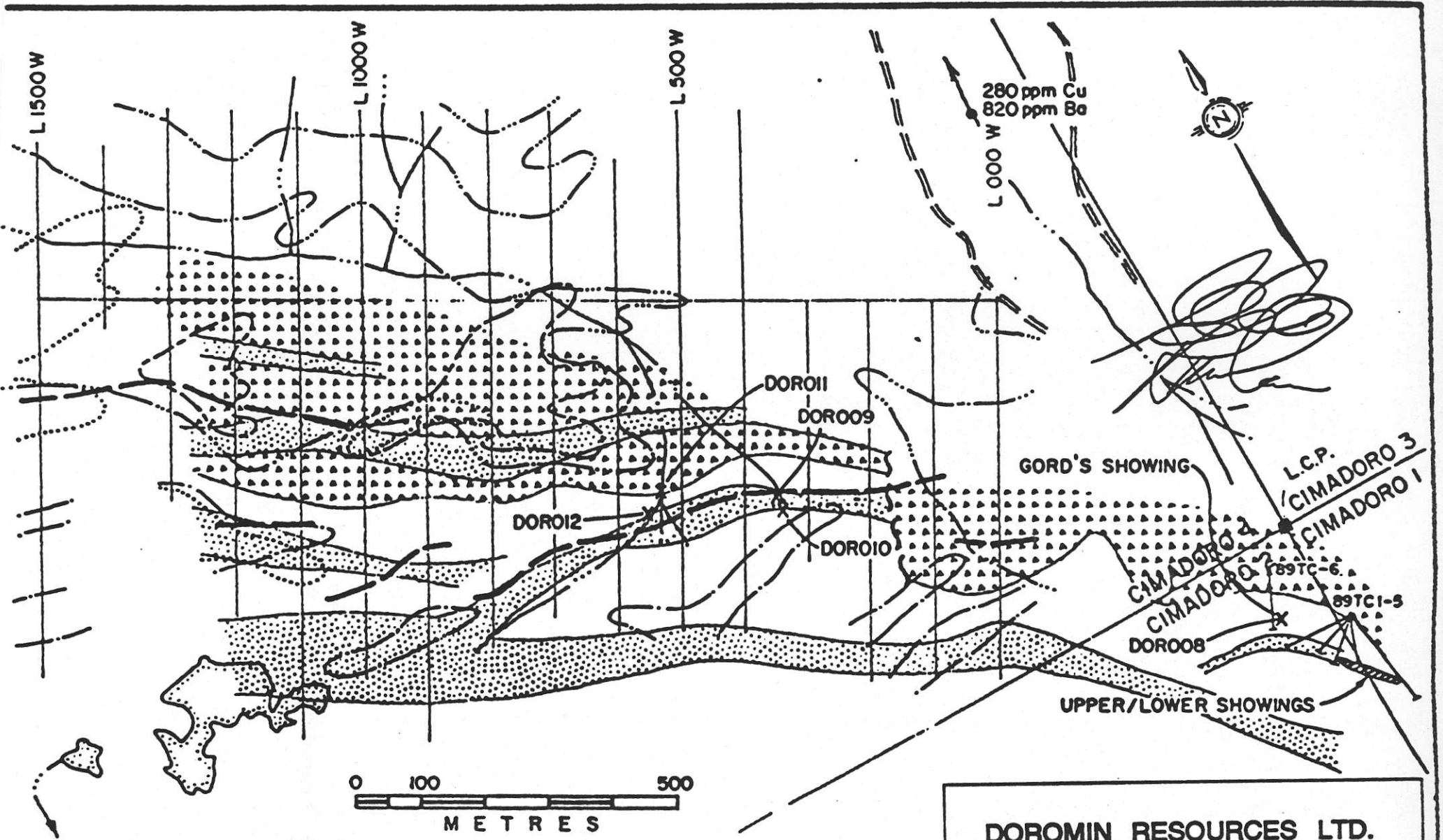
RD'S SHOWING  
 CLIFF SHOWING

**LEGEND**

- X Rock Sample
- △ Float Sample
- Teck '89 DDH
- - - VLF-EM Conductor
- Anomalous Silt Sample
- ~ Fault
- [Dotted Pattern] Mafic Volcanics
- [White Box] Diorite, Gabbro
- [Stippled Box] Chert, Argillite, Limestone
- [Dashed Circle] >16 ppm Pb in soil
- [Dashed Ellipse] >0.2 ppm Ag in soil



**DOROMIN RESOURCES LTD.**  
 CIMADORO PROPERTY  
 NTS 103F1  
 SKEENA MINING DIVISION  
 EAST GRID COMPILATION



**LEGEND**

- |   |                       |       |                             |     |                     |
|---|-----------------------|-------|-----------------------------|-----|---------------------|
| X | Rock Sample           | ~~~~~ | Fault                       | ⋯⋯⋯ | >120 ppm Zn in soil |
| △ | Float Sample          | ⋯⋯⋯   | Mafic Volcanics             | ⋯⋯⋯ | >930 ppm Ba in soil |
| — | Teck '89 DDH          | □     | Diorite, Gabbro             | ⋯⋯⋯ | >20 ppm Pb in soil  |
| — | VLF-EM Conductor      | ⋯⋯⋯   | Chert, Argillite, Limestone | ⋯⋯⋯ | >100 ppm Cu in soil |
| ● | Anomalous Soil Sample |       |                             |     |                     |

**DOROMIN RESOURCES LTD.**  
 CIMADORO PROPERTY  
 NTS 103F1  
 SKEENA MINING DIVISION  
 WEST GRID COMPILATION