

REB CLAIM GROUP

Omnica Mining Div.

Co-ords $57^{\circ} 00' N$ $124^{\circ} 24' W$.

Claims straddle boundary between N.T.S. map sheets 94 F/1 W & 94 C/16 W.

On a small easterly flowing tributary of the OSPIKA River.
Rugged Muskwa Ranges of Rocky Mts.Location

24 miles — kilometers NE of village of Ingenika on Williston Lk., serviced by airstrip — Fixed wing nearly daily from Mackenzie

40 mi ^(— kilometers) SE of Pretzel Lk. Cyprus ^{Hudson Bay} - campsite

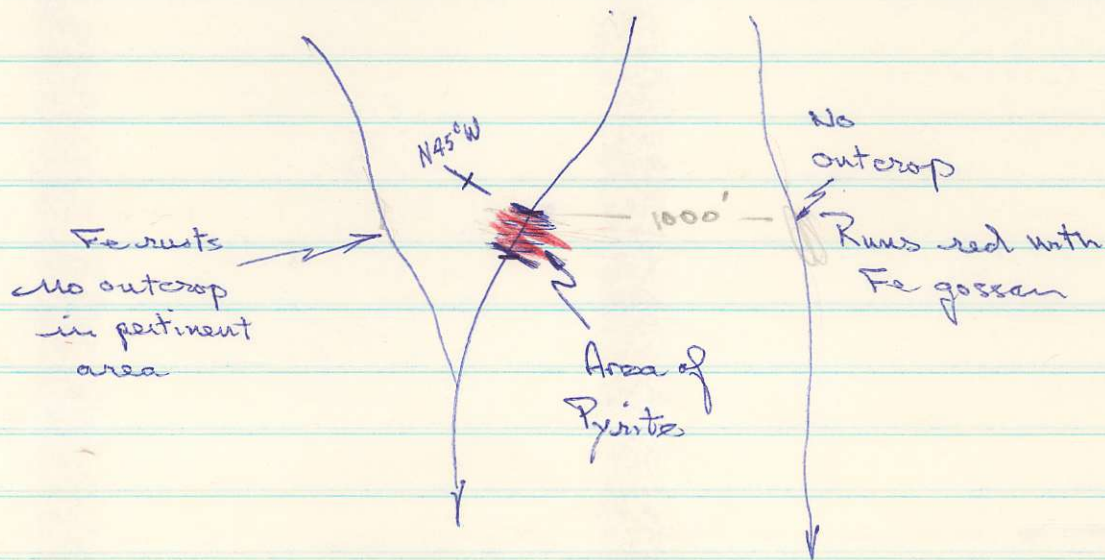
13 mi — km south of Akie Claims Aquitaine

24 mi — km	SE of Elf Deposit	} Both the subject of DDing by Cyprus Anvil-Hudson Bay O & G in 1979.
44 mi — km	SE of Cirque "	

Reb Claim Block

	<u>Units</u>	<u>Record No.</u>	<u>Recording Date</u>
Reb 1	9	2345	Nov 16 1979
" 2	12	2346	" "
" 3	9	2347	" "
" 4	12	2348	" "
	<u>42 units</u>		

The known mineral on the Reh Claims is restricted to one outcrop area exposed in a dry side creek.



Area of banded massive pyrite was found to extend through a true thickness of about 60'. Grades off rather rapidly into pyrite banded shales on both the upper & lower contacts.

Pyrite is dense, fine grained, fine even banding marked by sooty black shale interbands. (Approx. 75% py.) Occasional py veinlet cuts banding up to $\frac{1}{2}$ " thick (remobilized) with some associated white gangue mineral quartz & possibly barite.

No real systematic sampling, or soils taken although series of specimens could be said to be representative over the thickness.

Ten ^{specimen} samples assayed as follows:

Note low zinc, more significant Pb and Ag over $\frac{1}{2}$ oz/ton.



CHEMEX LABS LTD.

212 BROOKSBANK AVE.
 NORTH VANCOUVER, B.C.
 CANADA V7J 2C1
 TELEPHONE: 964-1221
 AREA CODE: 604
 TELEX: 043-52597

• ANALYTICAL CHEMISTS • GEOCHEMISTS • REGISTERED ASSAYERS

CERTIFICATE OF ASSAY

TO: Esperanza Explorations
 1027 - 470 Granville
 Vancouver, B.C.
 V6C 1V5

CERTIFICATE NO. 66702
 INVOICE NO. 33807
 RECEIVED October 23, 1979
 ANALYSED November 13, 1979

SAMPLE NO. :	% Cu	% MoS2	% Pb	% Zn	Cu/T Ag	Oz/T Au
28251			0.19	0.01	0.56	< 0.003
28252			0.09	< 0.01	NSS	NSS
28253			0.12	< 0.01	0.50	
28254	<i>REB CLAIMS</i>	<i>Spec.</i>	0.34	0.01	0.10	
28255			0.12	0.01	0.10	
28256			0.12	0.01	0.10	
28257			0.32	0.03	0.12	
28258			0.20	< 0.01	0.12	
28259			0.18	0.03	0.12	
28260			0.12	0.05	0.12	
28261				0.02	< 0.01	
28262				0.06	< 0.01	
28263				0.06	< 0.01	
28264			0.23	< 0.01	0.22	< 0.003
28265			15.9	0.41	3.78	
28266			0.93	35.3	0.14	
28267				0.65	< 0.01	
28268	0.13	0.044			0.05	0.030
28269			0.04	0.12	0.05	< 0.003
28270	1.80	0.475			0.62	< 0.003
28271	0.16	0.034			0.10	< 0.003
28272	0.51	0.025			0.22	< 0.003

- (1) Specimen containing trace amounts of silver, lead, zinc, copper, and bismuth.
- (2) Antimony, arsenic, and mercury.
- (3) 3' chip, 1/16" size, from surface of specimen.
- (4) 1/2" chip of well-sorted, medium-grained, quartzite.
- (5) Chip of quartzite, medium-grained, with some mica.



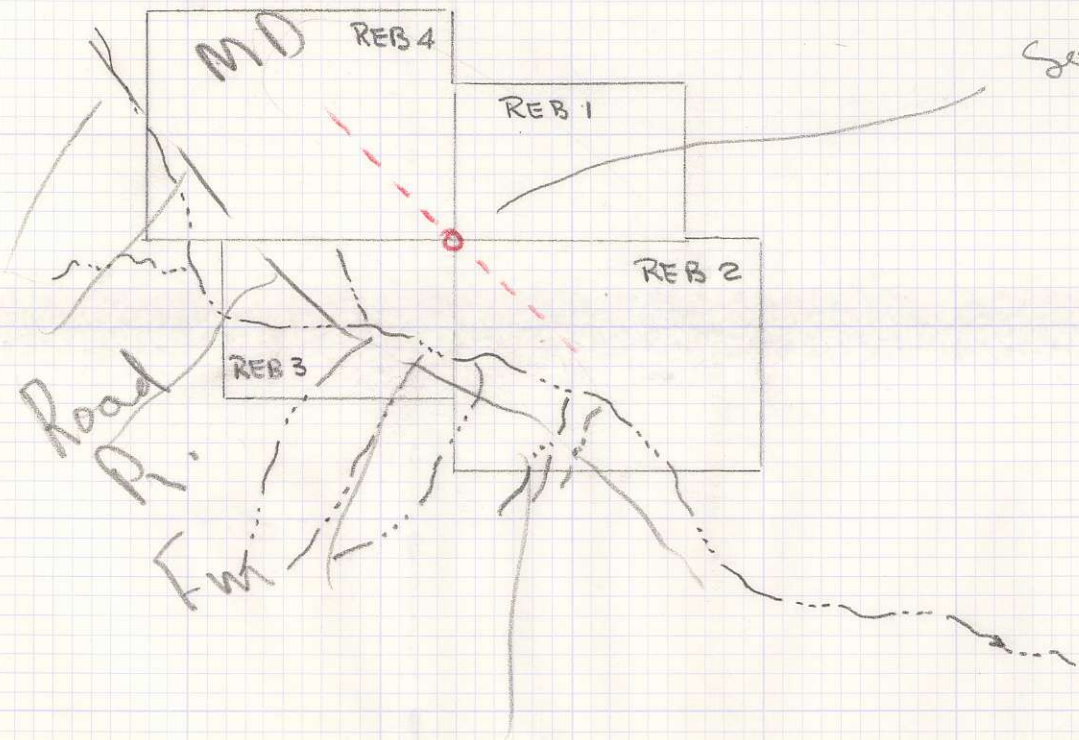
MEMBER
 CANADIAN TESTING
 ASSOCIATION

San Amadori
 REGISTERED ASSAYER, PROVINCE OF BRITISH COLUMBIA



124°30'

57°00'



Same as Cirque
Gunsteel Fm
FH slices