



EXPLORATION
C.A. AIRD
Regional Exploration Manager

521630 OCT 8 1982
REB 94C/16 94F/1W
ESSO MINERALS CANADA

600 - 1281 WEST GEORGIA STREET
VANCOUVER, B.C. V6E 3J7
(604) 664-4023

October 7, 1982

MV-7690

Please report from CAIRD. File: 2175

*- bit/bul ~ 200 ppm Pb
- did more geochem
& would plan to do more in '83 *
renew of Dec 1st & 2nd*

Mr. J. Brock,
President
Esperanza Explorations Ltd.
1027 - 470 Granville St.
Vancouver, B.C.
V6C 1V5

*EM gravity
& need to see on sulphides
with gravity.*

Dear John:

*- question of whether to pursue this kind
of model & Ed Percor is new boss.*

Re: Reb Drilling Program, 1982

Fulton is retiring.

PR-

Five drill holes totalling 465 metres were completed in the month of September on the Reb claims.

The objectives of this program were:

1. to test E.M. conductor obtained along strike from the original massive pyrite discovery showing.
2. to test anomalous lead geochemistry in soils.
3. to test two gravity highs near the massive pyrite showing (shown as G on the attached map)
4. to obtain drill core for analysis.

Holes 1, 2 and 4 cut intermittent sections of massive pyrite over intervals of up to 30 metres. Core will be analyzed for significant elements.

.../2

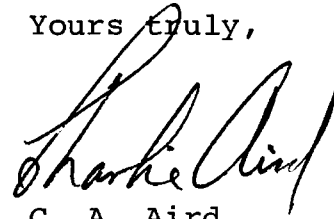
October 7/82

Attached is a sketch map showing locations of the five holes and their horizontal projections in relation to grid lines.

Esso still has a geophysical crew on the property.

Please contact me if there is additional information required.

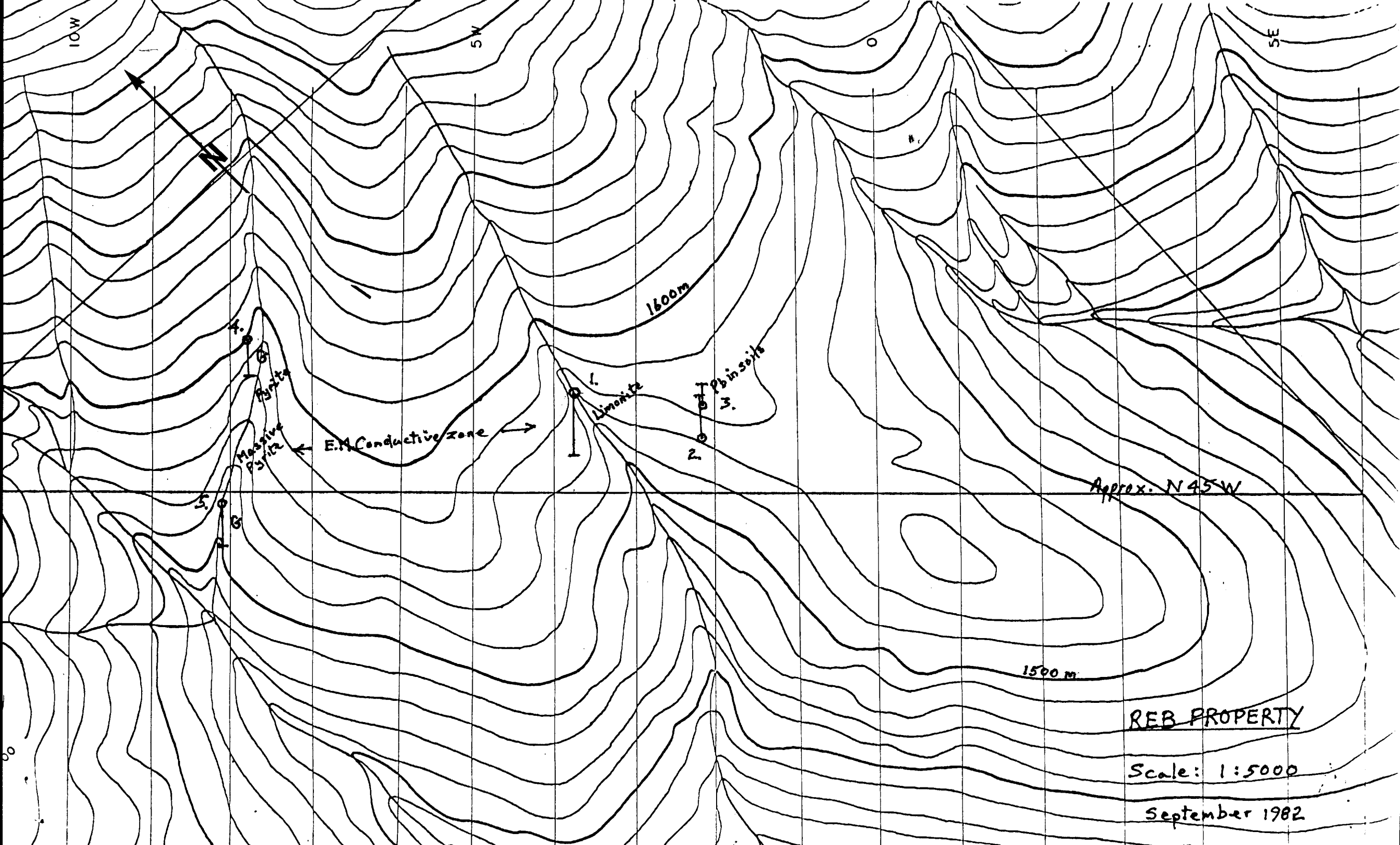
Yours truly,

A handwritten signature in cursive script, appearing to read "Charlie Aird".

C. A. Aird

CAA/dk

Attach 2.



10W

5W

5E

N

1600m

1500m

4.
3.
2.
1.
Massive
Pyrite

E.A. Conductive zone

1.
Limonite

2.
3.
4.
Pb in soils

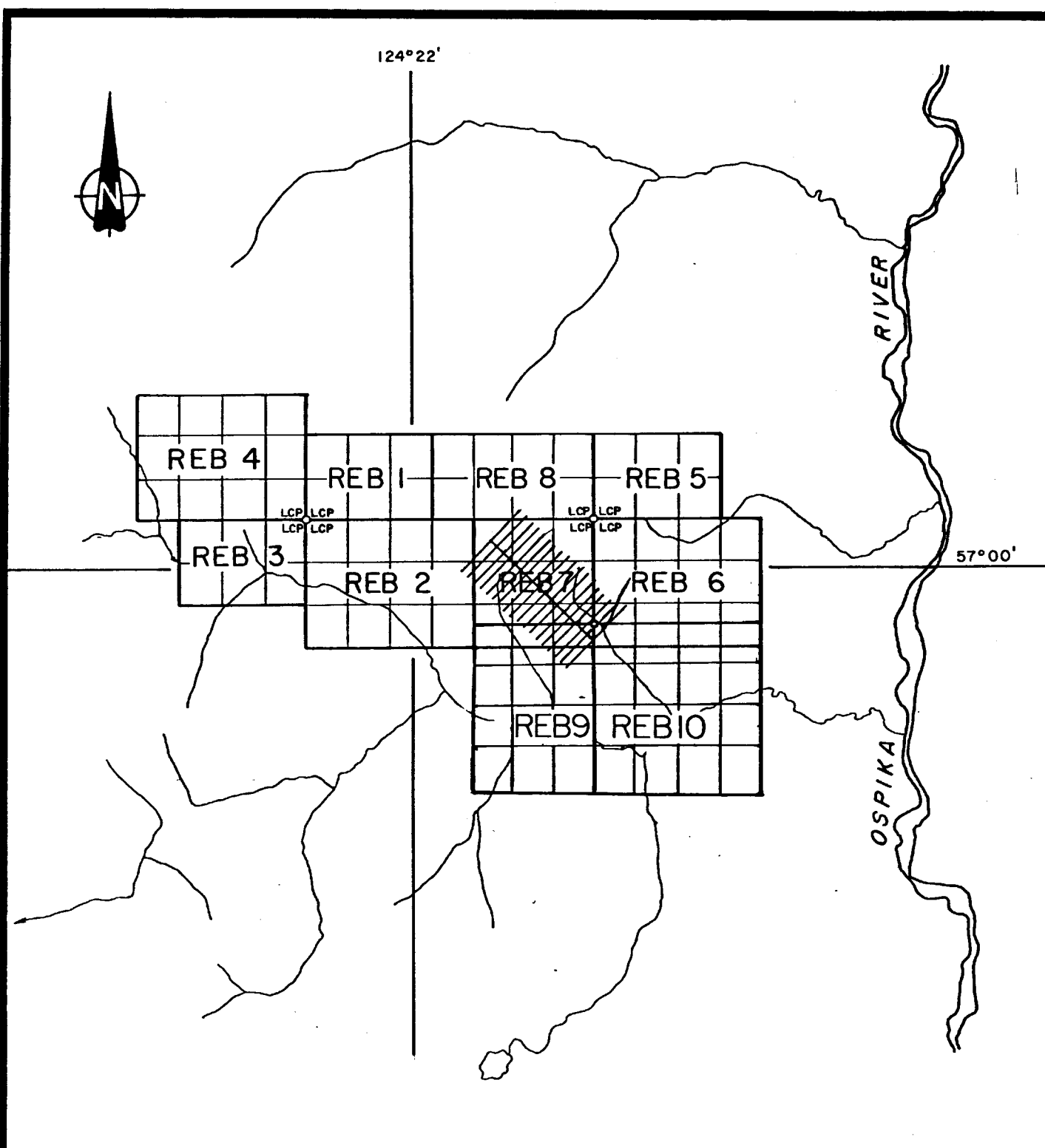
Approx. N45W

REB PROPERTY

Scale: 1:5000

September 1982

00



ESSO MINERALS CANADA

INDEX MAP
REB PROSPECT

Project No. 2152	Mining Div. Omineca
NTS 94-F-1, C-16	Drawn By: A.S./r.w.r.
Date: Oct. 25, 1981	Map No.

