

127°00'

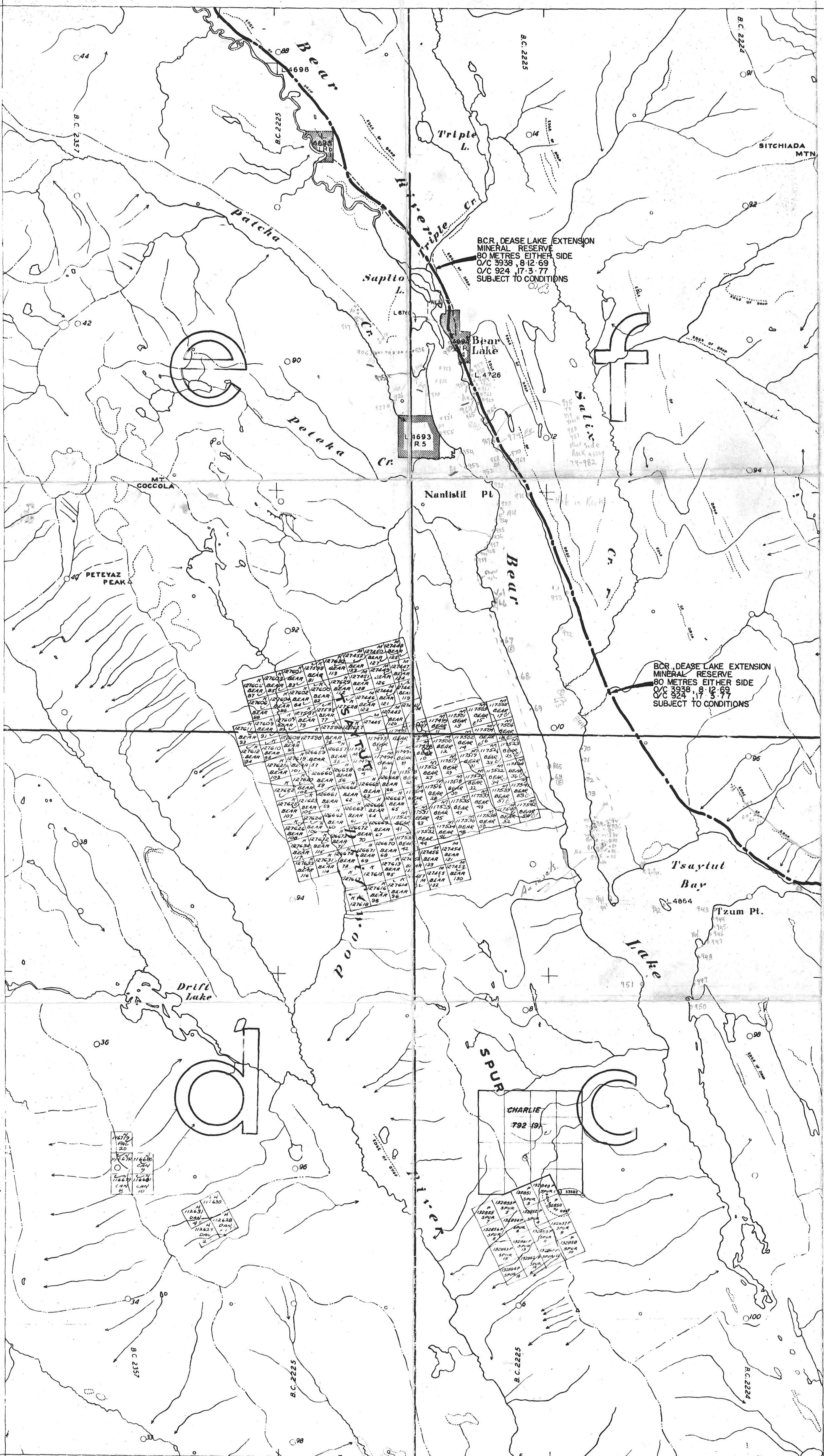
TO NORTH SEE MAP 94 D/7 W

126°45'

56°15'

56°15'

M 94D/2W

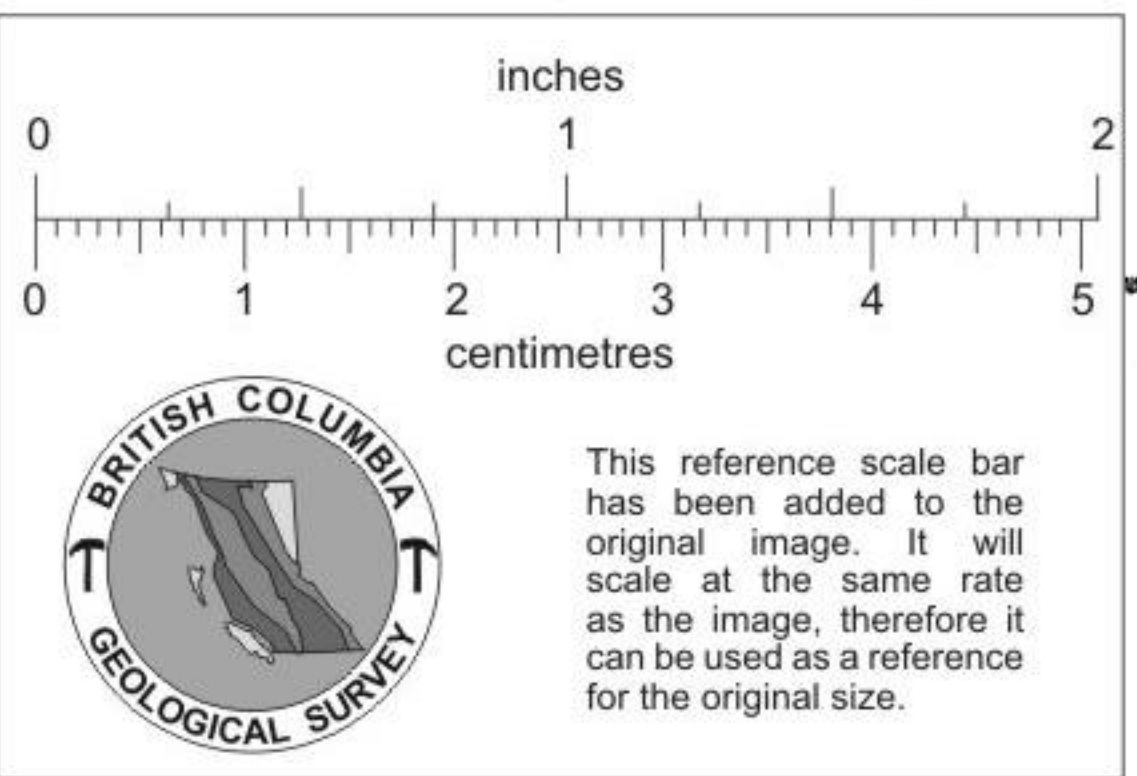


BCR, DEASE LAKE EXTENSION
MINERAL RESERVE
80 METRES EITHER SIDE
O/C 3938, 8-12-69
O/C 924, 17-3-77
SUBJECT TO CONDITIONS

BCR, DEASE LAKE EXTENSION
MINERAL RESERVE
80 METRES EITHER SIDE
O/C 3938, 8-12-69
O/C 924, 17-3-77
SUBJECT TO CONDITIONS

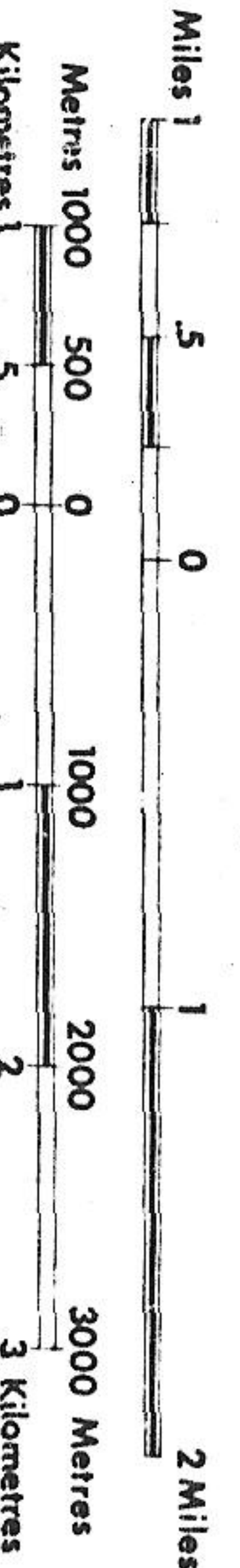
TO WEST SEE MAP 94 D/3 E

TO EAST SEE MAP 94 D/2 E



LEGEND

- GROWN-GRANTED MINERAL CLAIM
- FORFEITED C.G. MINERAL CLAIM
- VERIFIED LEGAL CORNER POST
- LEGAL CORNER POST & TAG NUMBER OTHER



Province of
British Columbia
Ministry of
Petroleum Resources

UNLESS OTHERWISE INDICATED, THE MAP POSITION OF
LEGAL CORNER POSTS IS BASED ON THE LOCATOR'S SEARCH FOR THE
THEIR INFORMATION, APPLICABLE TO THE OFFICE OF THE MINING DIVISION.
DATE OF MICROFILM: 78-12-15

56°00'

127°00' OMECEA MINING DIVISION

TO SOUTH SEE MAP 93 M/15 W

56°00'

Bear Lake
94D/2 521625