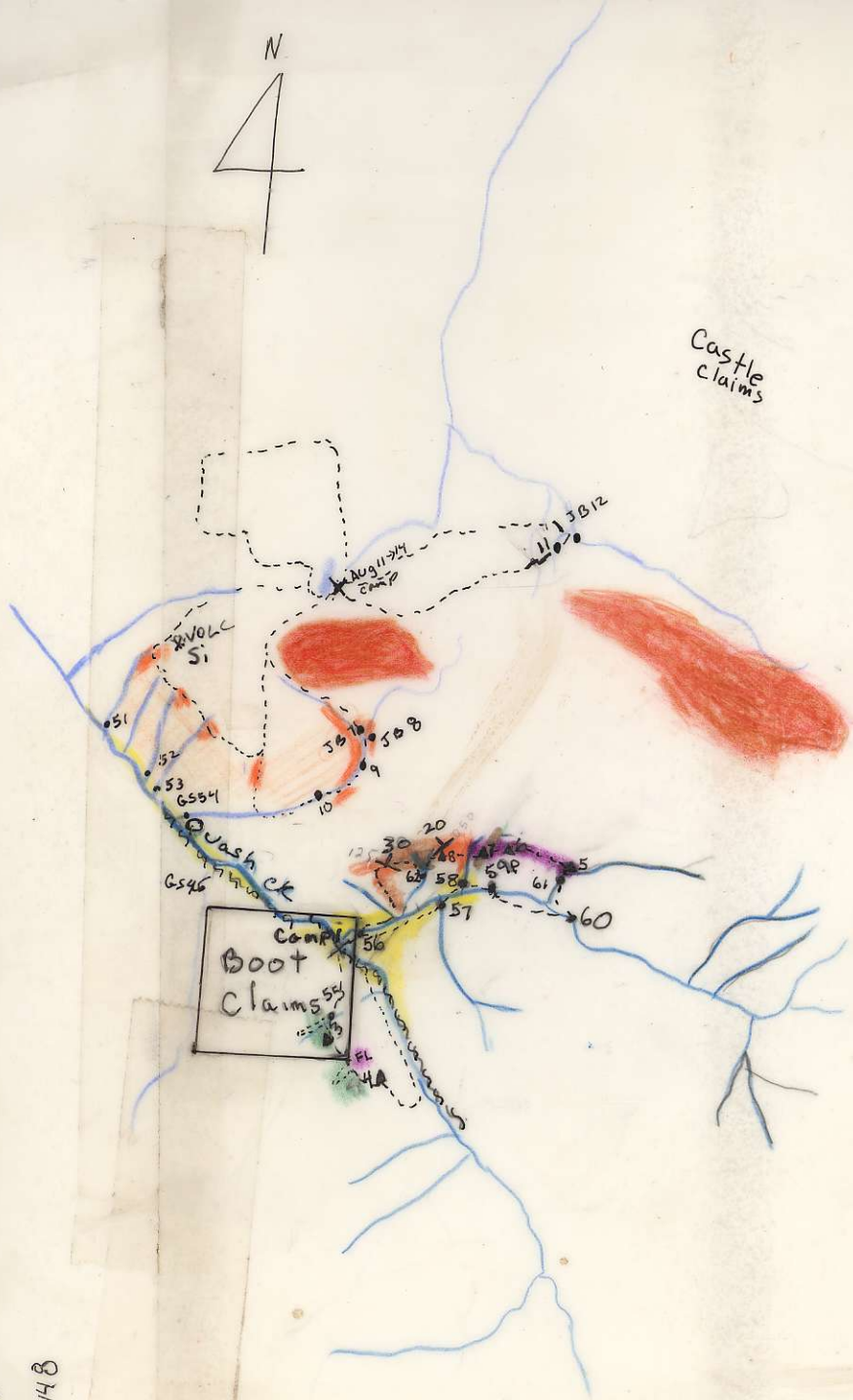


June 22/81

Aug 11 → 14/81

Quash Creek (East)
Prospecting Map.



Legend June 22, 23 1981
and Aug 11 → 14 1981

- vesicular Basalt.
- alluvial gravels
- andesite dyke.
- foliated Siltstone, mudstone, Sandstone
- volcanic breccia - green volc. matrix with purple volc. clasts.
- green volc. grading to grey volc. to the west.

FL mapped from float.

--- traverse

• silt sample location

▲ Rock sample taken for reference

X camp

59 P Pan sample taken

Y strike + dip.

G.S. 1981

~ ~ ~ possible fault.

Samples GS51, 52, 53, 54
JB7, 8, 11, 12,
all anomalous
in silver

Samples GS55, GS56
anomalous in Mo, Cu
(see attached results)

521473

104G/16

AIR PHOTO #

BC 5607 48