

L.R.J. GROUP
Stewart, B.C.

KEY to AERIAL PHOTO

Photo Item

- a. Helicopter Pad - access to showing 1, 2, 2b, 3, 4
- b. Helicopter Pad - original access to get to showings 5, 6, 7, 8
- c. Helicopter Pad - new access to get to showing 5, 6, 7

Photo No.

1. a portal which goes in 8 to 10 feet; vein varying in width from $\frac{1}{2}$ foot to one foot; elevation - 2200 ft.
See assay sheet #1
- 2, 2b. a portal which goes in 16 to 18 feet; there are two veins in tunnel both vary in width from 6 to 18 inches; elevation - 2150 ft.
See assay sheet #1
3. the third portal goes in only about 3 or 4 feet and vein is approximately 8 inches wide; elevation - 2100 ft.
See assay sheet #1
4. a small outcropping which has a narrow to wide quartz vein on either side of outcropping carrying up and down the mountain for a few hundred feet; elevation 2200 ft.
See assay sheet #2
5. the largest showing on property to date. Varies in width from 5 feet to 15 feet; length is at least a few hundred feet. Assay results were very erratic, with quartz, massive pyrite, gold, silver and copper all present; elevation 1900 - 2200 ft.
See assay sheet #3, 4
*Please note that the two assays done are both considerably different.
6. the richest assay results received to date are in the Midas portal; which the vein starts about 3 inches at the opening, and carries along the wall increasing at width for about 14 feet until it reaches the face where it is approximately 33 inches; elevation 2200 ft.
*Please note that the two assays done are both consistent.
See assay sheet #5, 6, 7
7. a showing about 100 feet above the #6 showing; sampled rock face; indicates semi to massive pyrite; elevation 2300 ft.
See assay sheet #5, 6

8. a vein structure of about 18 inches in width of massive pyrite; elevation 2200 ft.
See assay sheet #8
9. main adit - no significant results - semi to massive pyrite at times, drifts in about 500 ft; elevation 1000 ft.
10. since photograph has been taken a portion has been logged off the mountainside and an access road constructed from the canal to and through the big slide area, where years ago an old tractor road was cleared to reach the main adit.

- From old data checked and also from the old sketches and information we have; we feel that

showings # 1, 2, 2b & 3 are the Discovery vein
4 is the Opportunity vein
5 is the Mystery vein
6, 7 is the Midas vein
8 is unknown

From talking to former personel and old prospectors who worked on the property including the Midas adit; the main adit needed some more cross cutting done to reach the upper vein structure. The mine operators ran out of money at that time, and the property was dropped. The Wire Gold property showings across the Marmot river has yet to be explored as well as the 4 inch vein at elevation 1430 feet and 950 feet southwesterly from main adit on the south side of the river. The remaining portions of L.R.J. 1 - 6 claims are mainly unexplored also. The distance from showings 1, 2 & 3 to showing 8 is approximately 3000 feet.



MINERAL ENVIRONMENTS LABORATORIES

(DIVISION OF ASSAYERS CORP.)

SPECIALISTS IN MINERAL ENVIRONMENTS
CHEMISTS • ASSAYERS • ANALYSTS • GEOCHEMISTS

VANCOUVER OFFICE:
705 WEST 15TH STREET
NORTH VANCOUVER, B.C. CANADA V7M 1T2
TELEPHONE (604) 980-5314 OR (604) 983-4524
FAX (604) 980-9621

SMITHERS LAB.: #1
3176 TATLOW ROAD
SMITHERS, B.C. CANADA V0J 2N0
TELEPHONE (604) 847-3004
FAX (604) 847-3005

Assay Certificate

1S-0312-RA1

Company: RANDY KASUM
Project:
Attn: RANDY KASUM

Date: AUG-08-91
Copy 1. RANDY KASUM, STENART, B.C.

We hereby certify the following Assay of 4 ROCK samples submitted AUG-02-91 by RANDY KASUM.

Sample Number	AU-FIRE g/tonne	AU-FIRE oz/ton	AG g/tonne	AG oz/ton
LRJ 1A	14.45	.421	69.8	2.04
LRJ 1B1	14.10	.411	50.2	1.46
LRJ 1B2	27.07	.790	41.3	1.20
LRJ 1C	27.47	.801	157.2	4.59

Certified by _____

MIN-EN LABORATORIES



GENERAL ENVIRONMENTS LABORATORIES
 (DIVISION OF ASSAYERS CORP.)

SPECIALISTS IN MINERAL ENVIRONMENTS
 CHEMISTS • ASSAYERS • ANALYSTS • GEOCHEMISTS

VANCOUVER OFFICE:
 705 WEST 15TH STREET
 NORTH VANCOUVER, B.C. CANADA V7M 1T2
 TELEPHONE (604) 980-5814 OR (604) 989-4524
 FAX (604) 980-9621

SMITHERS LAB.: #2
 3176 TATLOW ROAD
 SMITHERS, B.C. CANADA V0J 2N0
 TELEPHONE (604) 847-3004
 FAX (604) 847-3005

Assay Certificate

1V-0873-RA1

Company: RANDY KASUM
 Project:
 Attn: RANDY KASUM

Date: AUG-21-91
 Copy 1. RANDY KASUM, STEWART, B.C.

We hereby certify the following Assay of 1 ROCK samples submitted AUG-20-91 by RANDY KASUM.

Sample Number	AU-FIRE g/tonne	AU-FIRE oz/ton	AG g/tonne	AG oz/ton
LR32A	2.40	.070	40.9	1.19

Certified by

MIN-EN LABORATORIES



MINERAL ENVIRONMENTS LABORATORIES
(DIVISION OF ASSAYERS CORP.)

SPECIALISTS IN MINERAL ENVIRONMENTS
CHEMISTS • ASSAYERS • ANALYSTS • GEOCHEMISTS

VANCOUVER OFFICE: 43
705 WEST 15TH STREET
NORTH VANCOUVER, B.C. CANADA V7M 1T2
TELEPHONE (604) 980-5814 OR (604) 988-4524
FAX (604) 980-9621

SMITHERS LAB.:
3176 TATLOW ROAD
SMITHERS, B.C. CANADA V0J 2N0
TELEPHONE (604) 847-3004
FAX (604) 847-3005

Assay Certificate

1V-0874-RA1

Company: RANDY KASUM
Project:
Attn: RANDY KASUM

Date: AUG-21-91
Copy 1. RANDY KASUM, STEWART, B.C.

We hereby certify the following Assay of 7 ROCK samples submitted AUG-20-91 by RANDY KASUM.

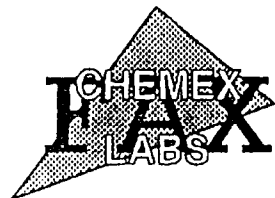
Sample Number	AU-FIRE g/tonne	AU-FIRE oz/ton	AG g/tonne	AG oz/ton
LRJ3A	.04	.001	3.5	.10
LRJ3B	16.90	.493	13.0	.38
LRJ3C	.17	.005	3.7	.11
LRJ3D	.03	.001	5.2	.15
LRJ3E	*6.78	.198	5.0	.15
LRJ3F	.18	.005	4.1	.12
LRJ3G	.01	.001	4.8	.14

*SAMPLE MAY CONTAIN METALLIC GOLD.

Certified by

MIN-EN LABORATORIES

4



Chemex Labs Ltd.

Analytical Chemists * Geochemists * Registered Assayers
212 Brooksbank Ave., North Vancouver
British Columbia, Canada V7J 2C1
PHONE: 604-984-0221

To: KASUM, RANDY

BOX 211
STEWART, BC
V0T 1W0

Project :
Comments:

Page Number :
Total Pages :
Certificate Date 28-A
Invoice No. 1-9120
P.O. Number

CERTIFICATE OF ANALYSIS A9120579

SAMPLE DESCRIPTION	PREP CODE	Au ppb RUSH	Ag ppm Aqua R	Au FA oz/T							
A	255 295	< 5	< 0.2	-----							
B	255 295	< 5	< 0.2	-----							
C	255 295	> 10000	33.0	0.429							
D	255 295	20	0.4	-----							
E	255 295	1060	0.7	-----							
F	255 295	4020	0.8	-----							
G	255 295	10	1.1	-----							
H	255 295	2330	0.10	-----							



MINERAL ENVIRONMENTS LABORATORIES
(DIVISION OF ASSAYERS CORP.)

SPECIALISTS IN MINERAL ENVIRONMENTS
CHEMISTS • ASSAYERS • ANALYSTS • GEOCHEMISTS

VANCOUVER OFFICE:
705 WEST 15TH STREET
NORTH VANCOUVER, B.C. CANADA V7M 1T2
TELEPHONE (604) 980-5814 OR (604) 988-4524
FAX (604) 980-9621

SMITHERS LAB.:
3176 TATLOW ROAD
SMITHERS, B.C. CANADA V0J 2N0
TELEPHONE (604) 847-3004
FAX (604) 847-3005

#5

Assay Certificate

1V-1050-RA1

Company: RANDY KASUM
Project:
Attn: RANDY KASUM

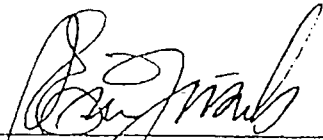
Date: SEP-12-91
Copy 1. RANDY KASUM, STEWART, B.C.

We hereby certify the following Assay of 8 ROCK samples submitted SEP-11-91 by RANDY KASUM.

Sample Number	*AU-FIRE g/tonne	*AU-FIRE oz/ton	AG g/tonne	AG oz/ton	CU %
LRJ-4A	.17	.005	1.5	.04	.001
LRJ-4B	42.00	1.225	120.6	3.52	.234
LRJ-4C	60.00	1.750	129.7	3.78	.376
LRJ-4D	79.20	2.310	163.8	4.78	.301
LRJ-4E	114.00	3.325	231.6	6.76	.660
LRJ-4F	74.00	2.158	186.9	5.45	.744
LRJ-4G	12.00	.350	55.2	1.61	.413
LRJ-4H	76.30	2.225	145.8	4.25	1.190

⑦

*METALLIC GOLD TO FOLLOW.

Certified by 

- MIN-EN LABORATORIES



**MINERAL
• ENVIRONMENTS
LABORATORIES**
(DIVISION OF ASSAYERS CORP.)

SPECIALISTS IN MINERAL ENVIRONMENTS
CHEMISTS • ASSAYERS • ANALYSTS • GEOCHEMISTS

VANCOUVER OFFICE:
705 WEST 15TH STREET
NORTH VANCOUVER, B.C. CANADA V7M 1T2
TELEPHONE (604) 980-5814 OR (604) 980-4524
FAX (604) 980-9621

SMITHERS LAB.:
3176 TATLOW ROAD
SMITHERS, B.C. CANADA V0J 2N0
TELEPHONE (604) 847-3004
FAX (604) 847-3005

#6

Metallic Assay Certificate

1V-1050-RM1

Company: RANDY KASUM
Project:
Attn: RANDY KASUM

Date: SEP-13-91
Copy 1. RANDY KASUM, STEWART, B.C.

We hereby certify the following Metallic Assay of 8 METALLIC samples submitted SEP-11-91 by RANDY KASUM.

Sample Number	Total		Assay Value Au		Total Weight Au		Metallic Au		Net Au	
	Wt (g)	+120 M Wt (g)	+120(g/t)	-120(g/t)	+120(mg)	-120(mg)	(oz/ton)	(g/t)	(oz/ton)	(g/t)
LRJ-4A	116.74	11.74	.03	.42	0.000	0.044	0.000	0.00	0.011	0.38
LRJ-4B	113.58	10.38	157.42	25.20	1.634	2.601	0.420	14.39	1.087	37.28
LRJ-4C	121.62	6.42	1046.88	16.80	6.721	1.935	1.612	55.26	2.076	71.18
LRJ-4D	176.51	4.91	1295.72	41.80	6.362	7.173	1.051	36.04	2.237	76.68
LRJ-4E	125.86	5.26	1517.11	59.00	7.980	7.115	1.849	63.40	3.498	119.94
LRJ-4F	174.73	9.23	1596.21	19.10	14.733	3.161	2.459	84.32	2.987	102.41
LRJ-4G	218.72	8.02	194.89	5.83	1.563	1.228	0.208	7.15	0.372	12.76
LRJ-4H	185.16	5.46	1789.01	30.00	9.768	5.391	1.539	52.75	2.388	81.87

⑦

Certified by _____

[Handwritten Signature]



**MINERAL
ENVIRONMENTS
LABORATORIES**
(DIVISION OF ASSAYERS CORP.)

SPECIALISTS IN MINERAL ENVIRONMENTS
CHEMISTS • ASSAYERS • ANALYSTS • GEOCHEMISTS

VANCOUVER OFFICE:
705 WEST 15TH STREET
NORTH VANCOUVER, B.C. CANADA V7M 1T2
TELEPHONE (604) 980-5814 OR (604) 989-4524
FAX (604) 980-9621

SMITHERS LAB.:
3176 TATLOW ROAD
SMITHERS, B.C. CANADA V0J 2N0
TELEPHONE (604) 847-3004
FAX (604) 847-3005

#7

Metallic Assay Certificate

1V-1258-RM1

Company: RANDY KASUM
Project: LRJ GROUP
Attn: RANDY KASUM

Date: OCT-12-91
Copy 1. RANDY KASUM, STEWART, B.C.

We hereby certify the following Metallic Assay of 6 ROCK samples submitted OCT-10-91 by RANDY KASUM.

Sample Number	Total Wt (g)	+120 M Wt (g)	Assay Value Au		Total Weight Au		Metallic Au		Net Au	
	Wt (g)	Wt (g)	+120(g/t)	-120(g/t)	+120(mg)	-120(mg)	(oz/ton)	(g/t)	(oz/ton)	(g/t)
LRJ5A	102.25	4.25	705.88	8.22	3.000	0.806	0.856	29.34	1.086	37.22
LRJ5B	433.10	38.10	480.31	18.30	18.300	7.228	1.232	42.25	1.719	58.94
LRJ5C	175.60	10.60	650.94	10.40	6.900	1.716	1.146	39.29	1.431	49.07
LRJ5D	235.80	8.80	2095.23	8.68	18.438	1.970	2.281	78.19	2.524	86.55
LRJ5E	1408.20	72.20	403.53	27.55	29.135	36.807	0.603	20.69	1.366	46.83
LRJ5F	181.90	20.90	683.54	8.90	14.286	1.433	2.291	78.54	2.520	86.41

Certified by

8

CERTIFICATE OF ANALYSIS

ET#900

RANDY KASUM

SAMPLE#	DESCRIPTION	AU OZ/TON	AU G/TONNE	AG OZ/TON	AG G/TONNE
1		.017	.58	.10	3.4
2		.014	.48	.10	3.4



GEOCHEMICAL/ASSAY CERTIFICATE



~~XXXXXXXXXXXXXXXXXXXX~~ File # 93-1524
 950 - 789 W. Pender St., Vancouver BC V6C 1H2 Submitted by: George Gorzynski

SAMPLE#	Mo ppm	Cu ppm	Pb ppm	Zn ppm	Ag ppm	Ni ppm	Co ppm	Mn ppm	Fe %	As ppm	U ppm	Au ppm	Th ppm	Sr ppm	Cd ppm	Sb ppm	Bi ppm	V ppm	Ca %	P %	La ppm	Cr ppm	Mg %	Ba ppm	Ti %	B ppm	Al %	Na %	K %	W ppm	Cu %	Pb %	Zn %	Ag** oz/t	Au** oz/t
LRJ-1	89	13173	16487	7817	208.7	6	19	198	22.48	263	5	47	<2	2	209.5	5	373	2	.05	.008	<2	6	.04	5	.01	<2	.20	.01	.03	<1	1.324	3.61	.95	11.81	5.734

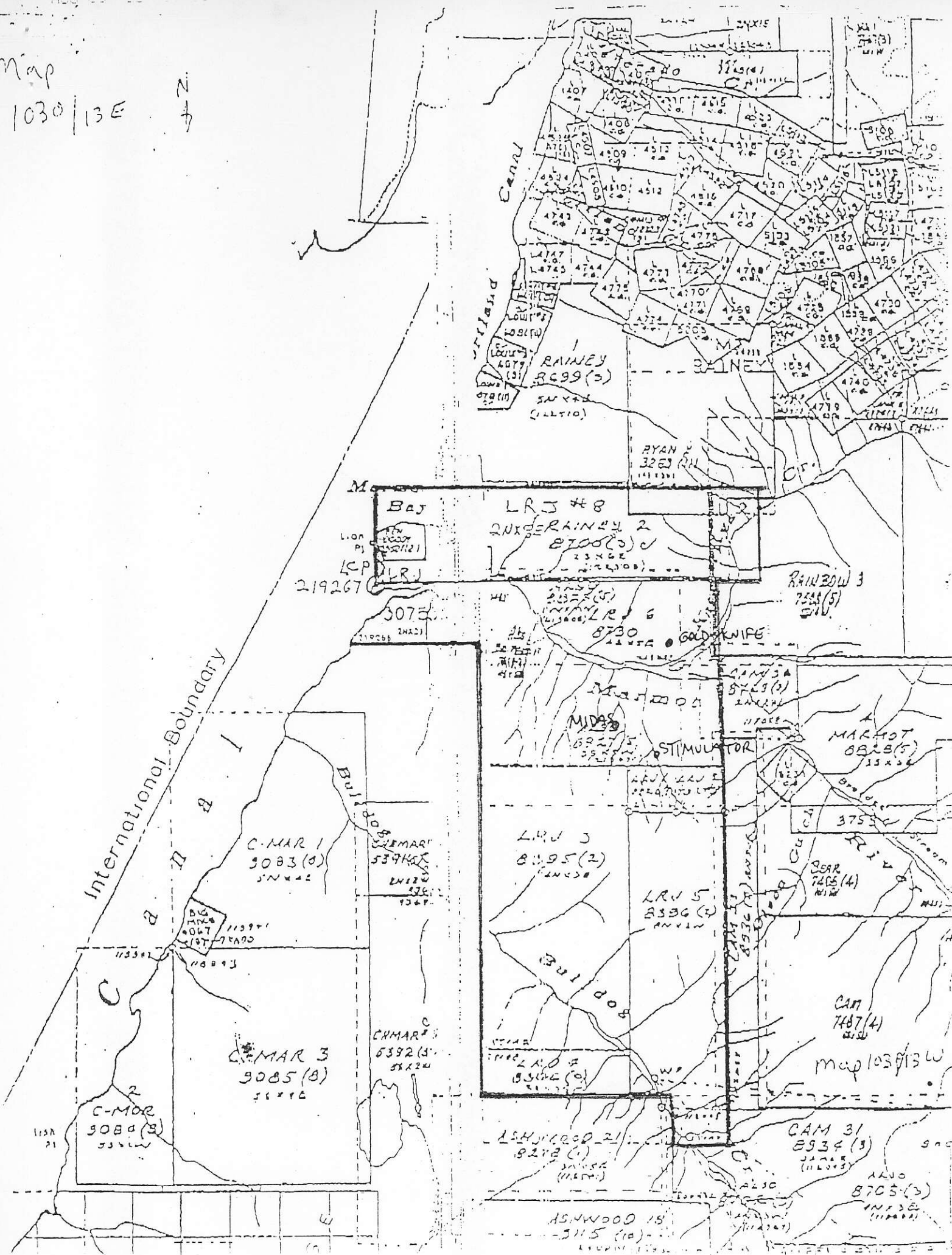
ICP - .500 GRAM SAMPLE IS DIGESTED WITH 3ML 3-1-2 HCL-HNO3-H2O AT 95 DEG.C FOR ONE HOUR AND IS DILUTED TO 10 ML WITH WATER.
 THIS LEACH IS PARTIAL FOR MN FE SR CA P LA CR MG BA TI B W AND LIMITED FOR NA K AND AL.
 ASSAY RECOMMENDED FOR ROCK AND CORE SAMPLES IF CU PB ZN AS > 1%, AG > 30 PPM & AU > 1000 PPB
 - SAMPLE TYPE: ROCK CU PB ZN BY REGULAR ASSAY ICP. AG** + AU** BY FIRE ASSAY FROM 1 A.T. SAMPLE.

DATE RECEIVED: JUL 15 1993 DATE REPORT MAILED: *July 21/93* SIGNED BY: *C. Leong* D.TOYE, C.LEONG, J.WANG; CERTIFIED B.C. ASSAYERS

LRJ Coim

High grade sample assayed by GG.

Map
1030/13E



International Boundary

Bay
LRJ #8
219267

LRJ #8
219267

RAINBOW 3
7658(5)

C-MAR 1
5083(0)

LRJ 3
8195(2)

LRJ 5
8336(3)

3753

C-MAR 3
5085(8)

map 1030/13W

C-MOR
5084(9)

CAM 31
8934(3)

AKO
8705(3)

ASHWOOD 15
5115(10)

30 BC 77 066 NP

