

KINGDOM RESOURCES LTD.

W L Fowler
~~1795-63~~

from W L H F

JONES

Hand

~~325-6420~~

(Re: Walter Kundra)

REPORT

ON THE

GOLD CLIFF AND RUFUS-ARGYLE CLAIM GROUPS
(REVEREED CROWN GRANTED MINERAL CLAIMS)

LOT NOS. 3265, 3268, 4181-2, 4185,
4986-4497 and 3417, 3421-23, 3426,
3787-93, 4554-56; 4576-82)

SKEENA MINING DIVISION

CASSIAR LAND DISTRICT

STEWART, BRITISH COLUMBIA

N. Lat. 55°59'
56°08'

W. Long. 129°59'
129°48'

521107

Property
Submission

Gold Cliff +
Rufus-Argyle
103P/13W

NTS 103-P-13(W)

for

KINGDOM RESOURCES LTD.
Suite 1030 - 777 Hornby Street
Vancouver, British Columbia

by

Donald W. Tully, P. Eng.

September 5, 1979

West Vancouver, B.C.

TABLE OF CONTENTS

	<u>Page</u>
INTRODUCTION.....	1
SUMMARY AND CONCLUSIONS.....	1
PROPERTY - LOCATION, ACCESS, PHYSIOGRAPHY....	2
CLAIMS.....	3
HISTORY - PREVIOUS DEVELOPMENT.....	4
REFERENCES.....	7
REGIONAL AND LOCAL GEOLOGICAL SETTING.....	8
MINERALIZATION - ASSAYS.....	10
RECOMMENDATIONS.....	11
ESTIMATED COST OF THE PROPOSED WORK PROGRAM..	11
CERTIFICATE.....	14
ASSAY CERTIFICATE.....	(End of Report)

MAPS

Figure 1 - Location Map.....	(Frontispiece)
Figure 2 - Topographic Plan - Gold Cliff Group.....	(Following page 1)
Figure 2a - Topographic Plan - Rufus- Argyle Group.....	(Following page 2)
Figure 3 - Claim Plan - Gold Cliff Group (B.C.).....	(Following page 3)
Figure 3a - Claim Plan - Gold Cliff Group.....	(Following page 4)
Figure 4 - Claim Plan - Rufus- Argyle Group (B.C.).....	(Following page 5)
Figure 4a - Claim Plan - Rufus- Argyle Group.....	(Following page 6)
Figure 5 - Plan showing Proposed Diam- ond Drill Hole Locations on the Gold Cliff Group.....	(Following page 10)
Figure 6 - Plan showing Proposed Diam- ond Drill Hole Locations on the Rufus-Argyle Group.....	(Following page 11)

GOLD CLIFF
&
RUFUS ARGYLE
CLAIM GROUPS

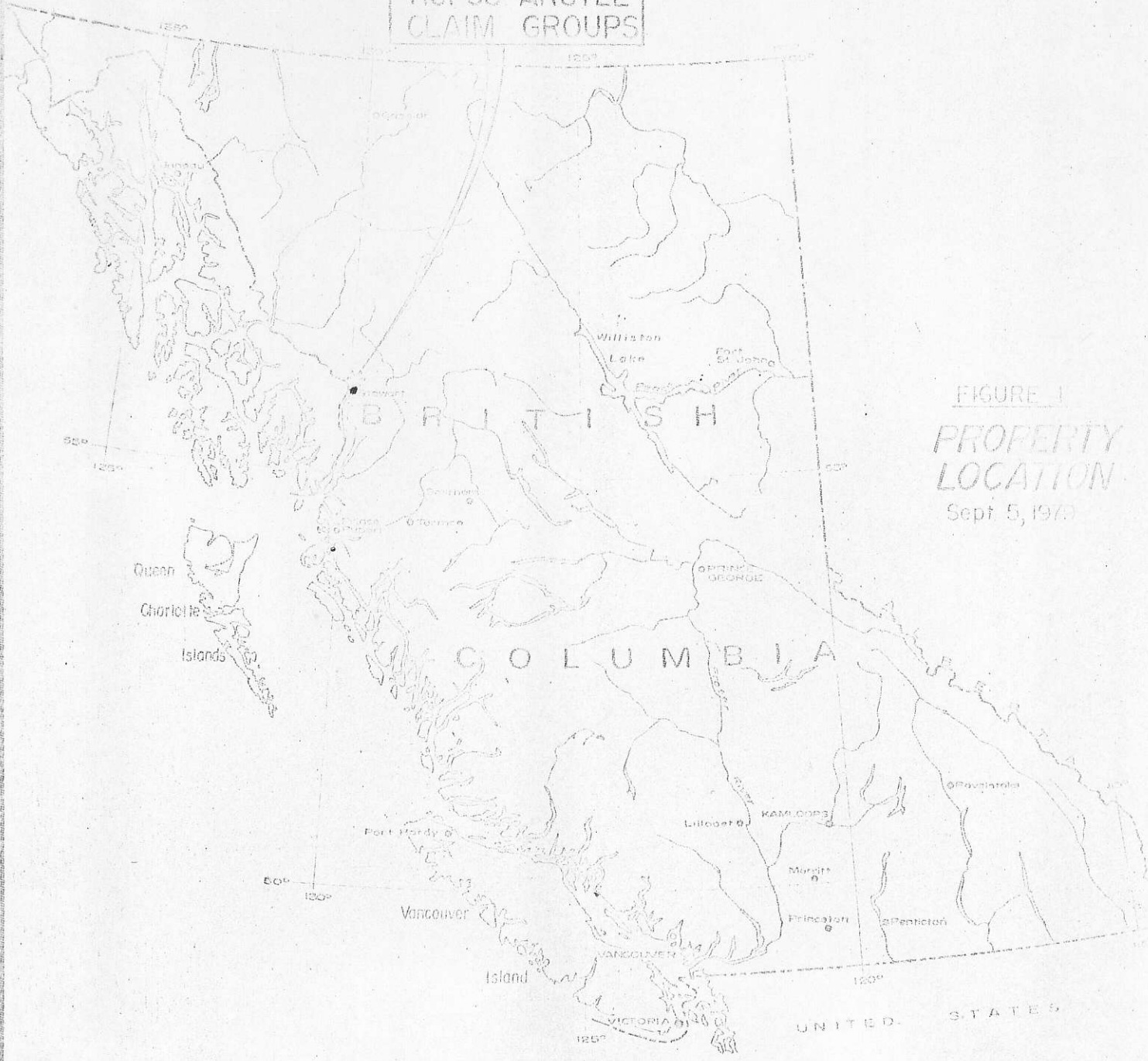


FIGURE 1
PROPERTY
LOCATION
Sept. 5, 1973



INTRODUCTION

This report was prepared at the request of Mr. Walter Fowler, President, Kingdom Resources Ltd., Suite 1030, 777 Hornby Street, Vancouver, British Columbia.

The purpose for this evaluation of the GOLD CLIFF and RUFUS-ARGYLE claim groups is to assess the mine-making potential of the mineralized zones.

The properties are located near Stewart, British Columbia. They were examined on August 13, 1979 and form the basis for this report.

A program of mineral exploration is recommended.

SUMMARY AND CONCLUSIONS

Kingdom Resources Ltd. holds an option to acquire two groups of mineral claims in the Stewart Area, British Columbia. The claim groups are the GOLD CLIFF comprising fifteen contiguous mineral claims located about three miles north of the Town of Stewart and the RUFUS-ARGYLE group of 20 located on the north side of the Bear River about fourteen air miles northeast of Stewart. Access is possible over steep mountainous trails on both properties but the most feasible alternative mode of transportation at present is the helicopter. Road access along the Bear River Road is available to the south end of the RUFUS-ARGYLE group where a trail leads northward along the west side of Rufus Creek.

The GOLD CLIFF and RUFUS-ARGYLE groups of claims are located in the heart of a famous mining camp comprising

ADVANCE PRINT

38 439000m. E. 40 41 42 43 44 45 47

4996
4997
03
02
01
6200
99
98
97
96
95
94

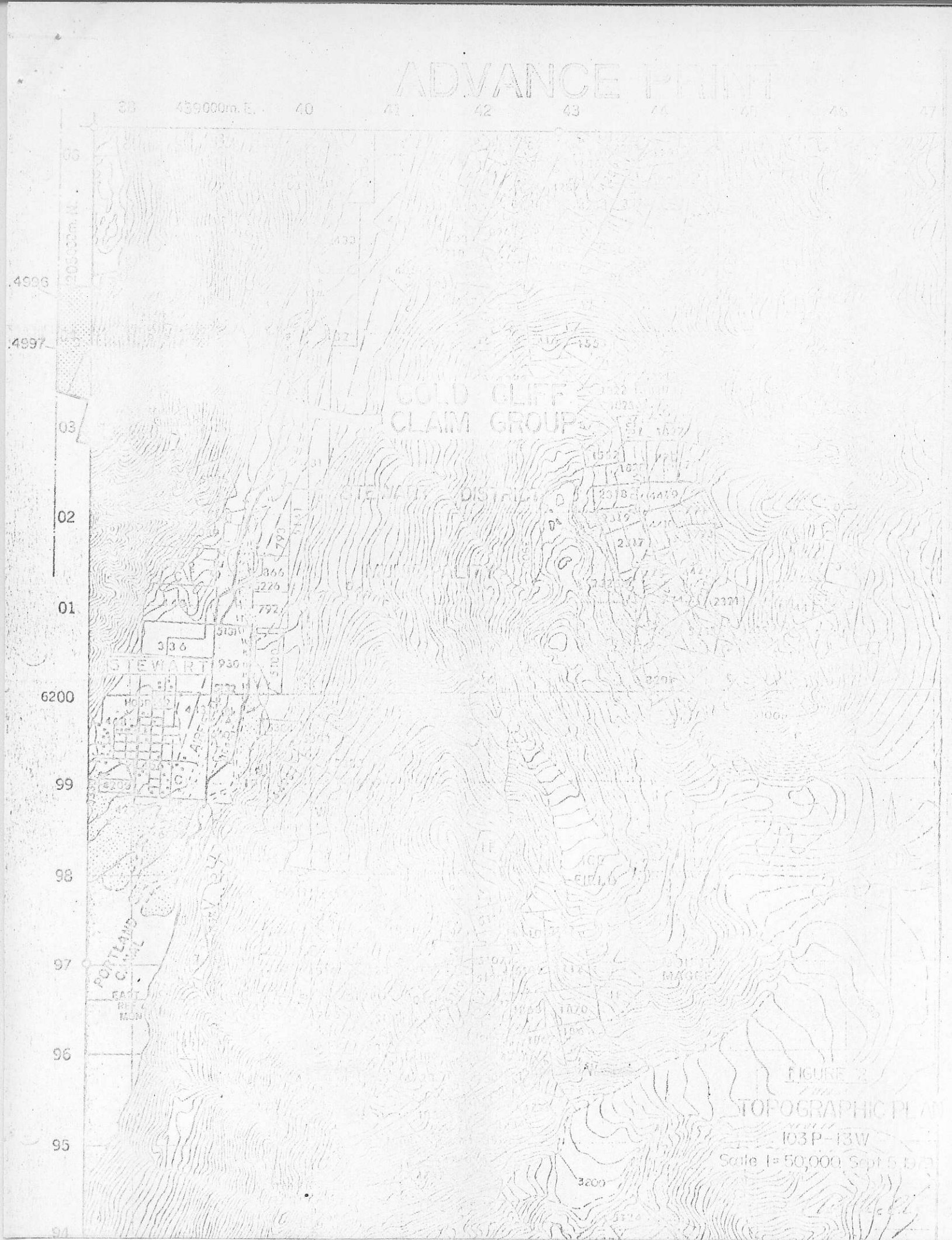
GOLD CLIFF
CLAIM GROUP

STEWART DISTRICT

STEWART

PORTLAND
CANAL
EAST
RIVER
MON

FIGURE 2
TOPOGRAPHIC PLAN
103P-13W
Scale 1=50,000 Sept 5 D 2



the Silbak-Premier, Big Missouri, Porter-Idaho, Prosperity, Dunwell and other mining properties that have produced substantial amounts of gold-silver lead and zinc over the years.

In 1925 some nine tons of ore was reported shipped from the present Gold Cliff ground averaging 121 ounces of silver, 16.5% lead, 21.5% zinc and \$1.40 gold per ton. The writer obtained a selected grab sample from the dump (Fig. 6) which assayed 15.25 ounces of silver per ton.

A program of diamond drilling is proposed for both the Gold Cliff and Rufus-Argyle claim groups.

The estimated cost of the recommended work program is \$136,675.

PROPERTY - LOCATION, ACCESS, PHYSIOGRAPHY

The Gold Cliff group of fifteen mineral claims are situated on the east-facing slope of Mount Dolly some three miles north of the Town of Stewart, British Columbia. The Rufus-Argyle group comprises twenty claims located on the north side of the Bear River about fourteen miles northeast of Stewart. The Bear River Road provides good access to the south side of the Rufus-Argyle group. Road access to the Gold Cliff group is not feasible at the present time.

Elevations over the Gold Cliff Group range from about 200 feet at the east side of the claims to over 5,500 feet on the northwest sector of the property. The Rufus-Argyle property varies in elevation from about 900 feet on the south portion of the claim group at the Bear River to

54

55

56

57

FIGURE 2a

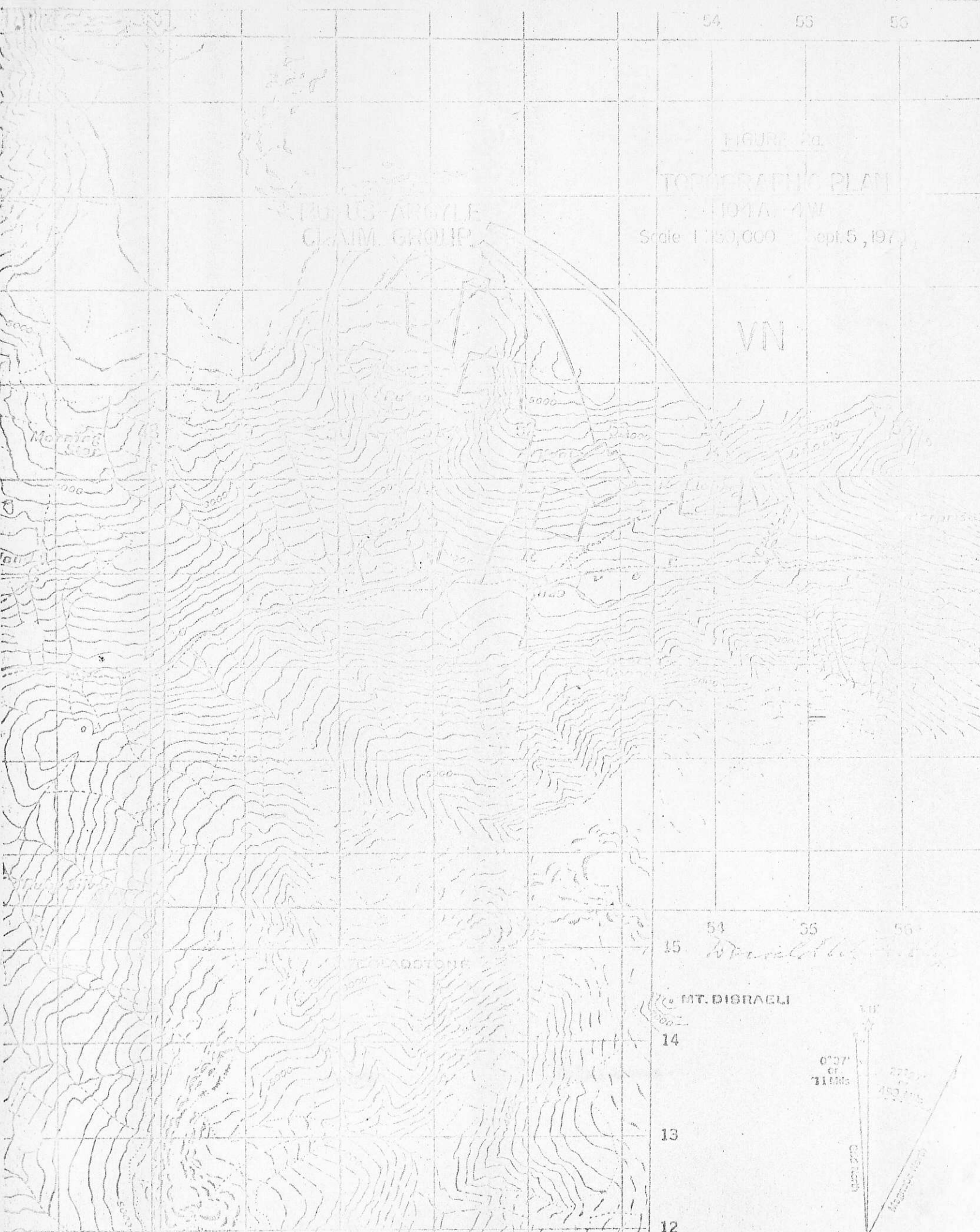
TOPOGRAPHIC PLAN

101A-4W

Scale 1:50,000 Sept. 5, 1970

THE US-ARABIA CLAIM GROUP

VN



54

55

56

15

14

13

12

MT. DISRAELI

0°07' N
of
MERIDIAN



over 5,000 feet at the north side of the ground. Rufus Creek traverses the Rufus-Argyle claims and provides ample water for any industrial needs. Numerous small streams were noted on the Gold Cliff group to supply a diamond drill program. The topography over both properties is steep and tends to be precipitous locally.

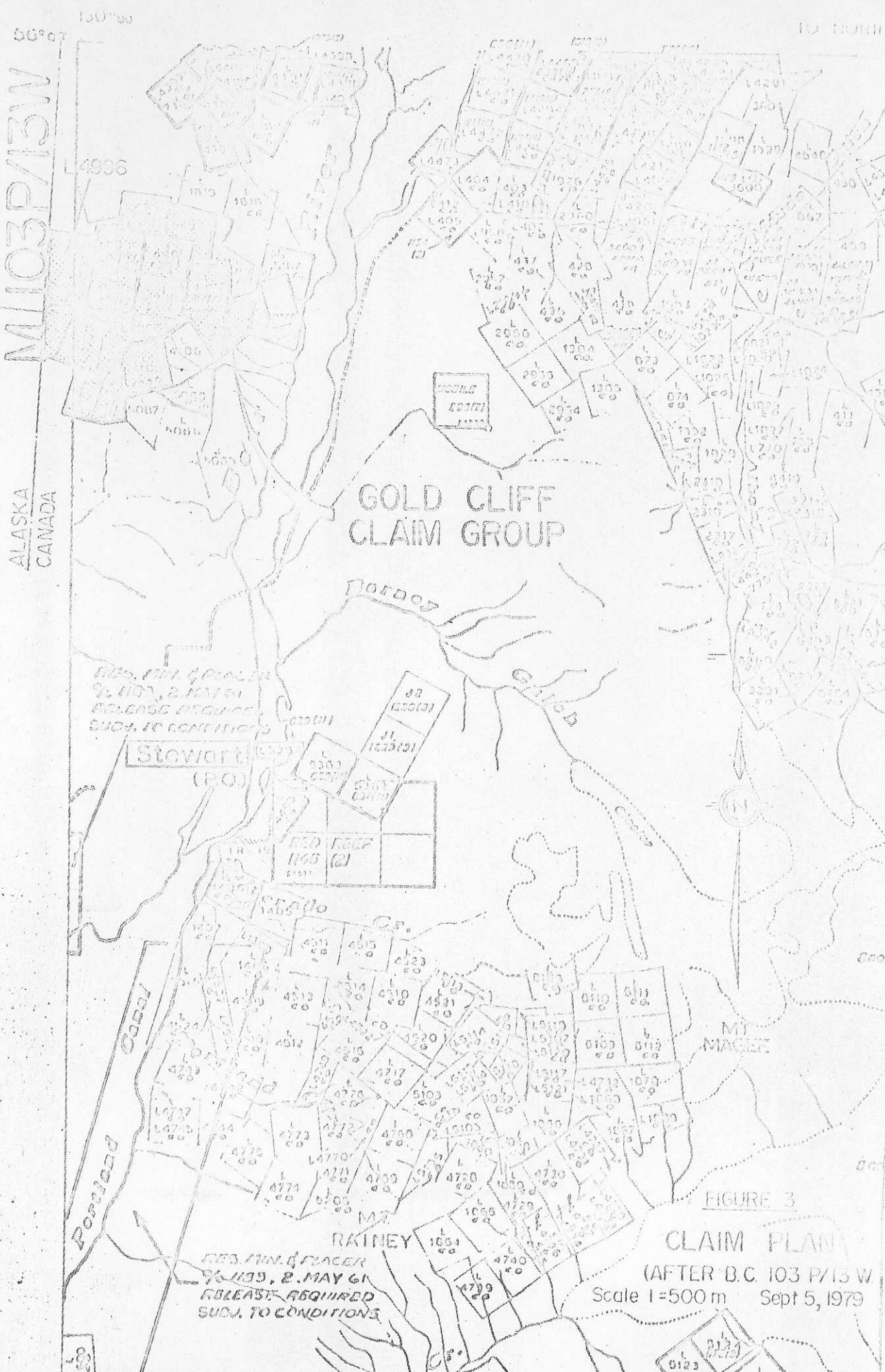
CLAIMS

Two groups of reverted crown-granted mineral claims are located in the Skeena Mining Division, Cassiar Land District, Stewart, British Columbia. These are the GOLD CLIFF group of fifteen contiguous claims situated about three miles north of the town of Stewart adjoining the Alaska-British Columbia border and the RUFUS-ARGYLE group of twenty claims, not all contiguous, located on the north side of the Bear River (Figures 3, 3a, 3b). Information file with the B.C. Ministry of Mines and Petroleum Resources on September 7, 1979 was as follows:

GOLD CLIFF GROUP

<u>Claim Name</u>	<u>Lot No.</u>	<u>Record Number</u>	<u>Area (hectares)</u>	<u>Expiry Date</u>	<u>Recorded Holding</u>
Gold Cliff No. 3 Fr.	3265	92(7)	20.86	July 11, 1980	(W.A. Kondra and
Gold Cliff No. 6	3268	95(7)	13.22	July 11, 1980	(W.L. Fowler
Bay View No. 2	4181	1331(6)	14.88	June 13, 1980	L.R.W. Scottd
Bay View No. 1	4182	1330(6)	12.01	June 13, 1980	L.R.W. Scottd
Lucille No. 1	4183	M.L.244	19.33	Mar. 14, 1980	W.L. Fowler
Jerry Dog	4985	96(7)	17.96	July 11, 1980	W.A. Kondra and
Gold Cliff No. 2	4987	90(7)	17.96	July 11, 1980	W.L. Fowler
Gold Cliff No. 4	4988	93(7)	18.37	July 11, 1980	do.
Gold Cliff No. 1	4989	88(7)	19.17	July 11, 1980	do.
Gold Cliff No. 2 Fr.	4990	91(7)	17.30	July 11, 1980	do.
Gold Cliff No. 5	4992	94(7)	18.99	July 11, 1980	do.
Tom	4993	90(7)	16.88	July 11, 1980	do.
Darney	4994	97(7)	16.34	July 11, 1980	do.
Gold Fr.	4996	87(7)	20.90	July 11, 1980	do.
Gold Cliff No. 1 Fr.	4997	89(7)	13.98	July 11, 1980	do.

258.15 hectares (637.88 acres)



6 L 4997

M103P/13W

ALASKA
CANADA

**GOLD CLIFF
CLAIM GROUP**

REG. MIN. & RECLER
% 1107, 2. MAY 61
RELEASE REQUIRED
SUBJ. TO CONDITIONS

Stewart
(P.O.)

RED REEF
1165 (C)

Galedo



FIGURE 3

CLAIM PLAN

(AFTER B.C. 103 P/13 W)

Scale 1=500 m Sept 5, 1979

REG. MIN. & RECLER
% 1109, 2. MAY 61
RELEASE REQUIRED
SUBJ. TO CONDITIONS

Rainey

Mt. Magee

Rendell
Galed
Galedo

3

4

RUFUS-ARGYLE GROUP

<u>Claim Name</u>	<u>Lot No.</u>	<u>Record Number</u>	<u>Area (hectares)</u>	<u>Expiry Date</u>	<u>Recorded Holder</u>
Argyle Fr.	3417	520(3)	20.47	March 1, 1980	J.K. Newton
Comet No. 3	3421	521(3)	20.15	March 1, 1980	J.K. Newton
Comet No. 4	3422	522(3)	20.89	March 1, 1980	J.K. Newton
Veteran	3423	524(3)	12.83	March 1, 1980	J.K. Newton
Veteran No. 3	3426	523(3)	20.90	March 1, 1980	J.K. Newton
Rufus No. 1	3787	525(3)	20.49	March 1, 1980	J.K. Newton
Rufus No. 2	3788	526(3)	19.24	March 1, 1980	J.K. Newton
Rufus No. 4	3790	527(3)	20.90	March 1, 1980	J.K. Newton
Rufus No. 6	3792	528(3)	15.19	March 1, 1980	J.K. Newton
Baby Rufus Fraction	3793	529(3)	15.90	March 1, 1980	J.K. Newton
Wide Fraction	4554	530(3)	13.68	March 1, 1980	J.K. Newton
Silver Fraction	4555	531(3)	19.57	March 1, 1980	J.K. Newton
Long Fraction	4556	532(3)	14.81	March 1, 1980	J.K. Newton
Argyle No. 1	4576	534(3)	15.99	March 1, 1980	J.K. Newton
Argyle No. 2	4577	535(3)	17.08	March 1, 1980	J.K. Newton
Argyle No. 3	4578	536(3)	14.95	March 1, 1980	J.K. Newton
Argyle No. 4	4579	537(3)	14.48	March 1, 1980	J.K. Newton
Argyle No. 5	4580	538(3)	19.76	March 1, 1980	J.K. Newton
Argyle No. 6	4581	539(3)	18.99	March 1, 1980	J.K. Newton
Duke Fraction	4582	540(3)	18.99	March 1, 1980	J.K. Newton

355.26 hectares (877.83 acres)

The Comet, Rufus No. 6 and the Veteran claims are not contiguous with the main claim group.

The claims are shown on British Columbia Ministry of Mines and Petroleum Resources claim maps M103-P-13W and 104-A-4W.

HISTORY - PREVIOUS DEVELOPMENT

Reference to mineralization in the area of the GOLD CLIFF claim group was first made in the British Columbia Minister of Mines Reports for the years 1910, 1915, 1919 and 1920. In 1921 the Bayview No. 1 and No. 2 were acquired by George and W.A. Cameron, Stewart, B.C., who also staked among

GOLD CLIFF CLAIM GROUP

MT. DOLLY

Granite Cr.

BEAR RIVER

Bottois Gulch

STEWART

ALASKA
BRITISH COLUMBIA

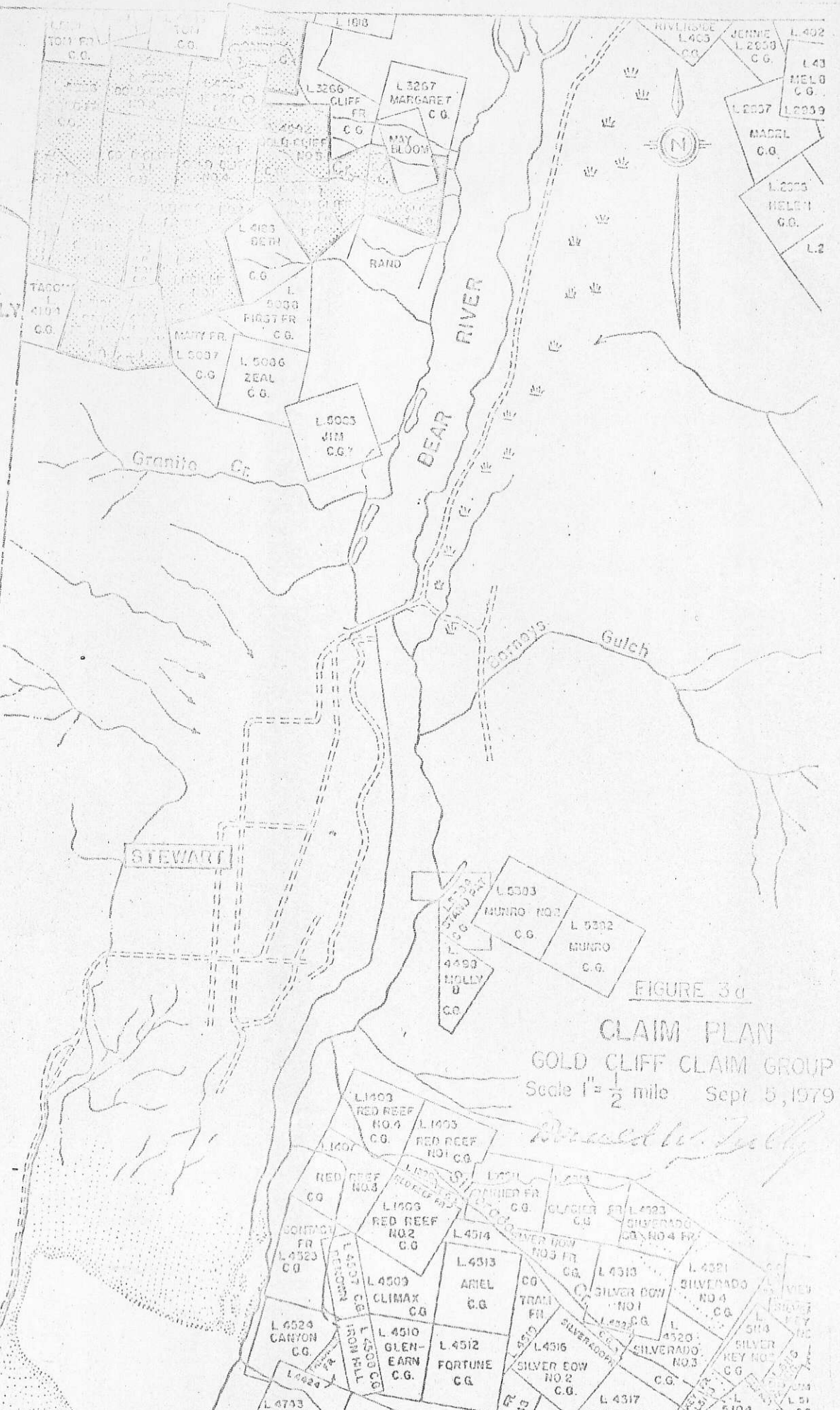
FIGURE 3d

CLAIM PLAN
GOLD CLIFF CLAIM GROUP
Scale 1" = 1/2 mile Sept 5, 1979

David W. Kelly

55°55'

HYDER



other claims the Lucille No. 1 as a group of claims on the southeast side of Mount Dolly. These claims were controlled by the Bayview Syndicate which did development work in 1921 and 1922 on a vein on the granite-sediment contact that trends northeasterly through the claims. This vein was opened up by trenching for about 300 feet along a N 30° E strike at about the 3,700 foot elevation and dipped steeply northwest. The Syndicate drove a crosscut tunnel some 100 feet below the vein outcrop but failed to intersect mineralization. Several narrow veins carrying galena and sphalerite striking along the westerly trending granite contact were reported.

W. Dann, N. Dann and J. Douville of Stewart acquired control of the Bayview Syndicate in 1925 and did some cross-cutting and drifting. They discovered a vein on the Lucille No. 1 claim and drove the No. 2 adit on it. According to the record some nine tons was shipped averaging 121 ounces of silver, 16.5% lead, 21.5% zinc and \$1.40 gold per ton from a vein varying between 1 and 4 feet in width. The Lucille vein strikes northwest and dips about 45° southwest. Memoir 175 of the Geological Survey of Canada reported another parallel vein some seventy feet above and a similar distance west of this vein. Both veins are well mineralized with galena, sphalerite, pyrite and tetrahedrite. The writer took a grab sample from the dump below the No. 2 adit portal which assayed 15.25 ounces of silver and showed substantial amounts of galena, sphalerite, pyrite and pyrrhotite in the hand specimen.

The United Empire Gold and Silver Mining Company Limited acquired and surveyed the claim holdings of the Bayview Syndicate in 1928. This company did work on the upward continuation of the Lucille Vein on surface between the 3,400 and 3,700 elevations and deepened the tunnel in 1930.



RUFUS-ARGYLE
CLAIM GROUP



TO EAST SEE MAP 104 M/A E

- LEGEND
- COVENANT-GUARANTEED MINERAL CLAIM
 - REVERTED CO. MINERAL CLAIM
 - FORFEITED MINERAL CLAIM
 - VECHERED LEGAL CORNER POST
 - LEGAL SURVEY
 - LEGAL CORNER POST & VA. JUNCTION

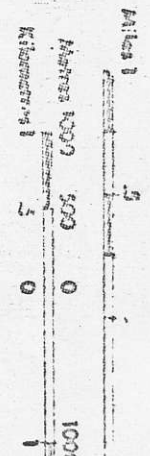


FIGURE 4
CLAIM PLAN
(AFTER B.G. 104M-4A)
Sept 8, 1979

<u>Vein Name</u>	<u>Eleva- tion</u>	<u>Location</u>	<u>Strike</u>	<u>Dip</u>	<u>Length</u>	<u>Width</u>	<u>Minerals reported</u>
Erickson	3400 ft.	Veteran Veteran No.3 Comet	N60°E	N50°W	4500 ft.	30 ft.	Chalcopyrite Pyrite Hematite
Morton	4700 ft.	500 ft. west of Comet Vein	N50°E	S50°E	200 ft.	20 in.	Galena Sphalerite
Blue	4700 ft.	Near Comet and Comet No. 1	N30°W	S50°W	Not given	10 in.	Gold Silver Lead Copper
Comet	5000 ft.	Comet, Comet No.1 and Comet No. 2	N20°E	S85°E	3500 ft.	Up to 40 ft.	Pyrite Arsenopyrite Chalcopyrite Silver
New Lead	Not given	Veteran No.1	N30°E	S70°E	300 ft.	Up to 8 ft.	Pyrite Chalcopyrite Galena

Most of the former development work was in the form of trenching and adit-tunnels done by the former Rufus Silver-Lead Mines and the Argenta Mines which were consolidated into Rufus Argenta Mines, Ltd. in 1928.

High-grade assays of gold and silver have been reported from the Rufus and Comet groups of mineral claims and considerable development work has been noted. A glacier lying above the claim group has caused rock debris to cover most of the old workings which are now difficult to recognize because of glacial debris and cave.

The claims should be mapped.

FIGURE 4a

CLAIM PLAN

Scale 1" = 1500'

Sept 5, 1979

Donald W. Kelly



REFERENCES

The following references are pertinent to the claims described in this report:

British Columbia Minister of Mines Reports for -

- 1910 - p. 71;
- 1915 - p. 448;
- 1919 - p. 64;
- 1920 - p. 54;
- 1921 - 62, 67;
- 1922 - p. 69;
- 1923 - p. 78;
- 1924 - p. 71;
- 1925 - p. 63, 99, 100;
- 1927 - p. 87, 88;
- 1928 - p. 98;
- 1929 - p. 95, 318, 506;
- 1930 - p. 105, 442;
- 1933 - p. 53;
- 1934 - p. 318;
- 1963 - p. 11

- Geological Survey of Canada, Memoir 159 - p. 38, 39, 69-72
- Geological Survey of Canada, Memoir 175 - p. 106, 144, 149
- Geological Survey of Canada, Economic Geology Series 8 - p.275
- Geological Survey of Canada, Aeromagnetic Map 9199G - Bear River
- Engineering Report on Athena Mines Ltd. (NPL) (Gold Cliff Group) dated May 31, 1969, by R.E. Renshaw, P.Eng.
- Report on Argenta Mines Ltd. (Upper Bear River) dated Stewart, August 31, 1925 by A.R. Morton (Mine Manager)
- Report on Argenta Mines Ltd. (Upper Bear River) dated Stewart, B.C., July 27, 1925 by Alfred J. Gaul
- Report on the Comet Group of Mining Claims dated at Seattle, Wash., June 19, 1920 by Arthur E. Bryan, M.E.
- B.C. Department of Mines and Petroleum Resources Bulletin 58, Geology and Mineral Resources of the Stewart Area 1971, by E.W. Grove

REGIONAL AND LOCAL GEOLOGICAL SETTING

British Columbia Ministry of Mines and Petroleum Resources Bulletin No. 58 shows the regional geology of the Stewart Area.

The Stewart Map-Area is dominated geologically by formations of the Upper Hazelton assemblage of sediments and volcanics. These rocks are intruded by plutonic rocks of the Coast Crystalline Belt. The core of the Coast Mountains which are prominent throughout the region is a metamorphic equivalent of the Lower Hazelton metasediments.

Two lithologic units are recognized on the Gold Cliff claim group, namely, lower to middle Jurassic argillites and sandstones intruded by the Hyder quartz monzonite and granodiorite with dyke facies.

The Rufus-Argyle claim group is underlain by sediments of the Bitter Creek formation.

A tentative table of geologic formations is as follows:

<u>Formation</u>	<u>Description/Event</u>	<u>Age</u>
Sand, gravel and glacial debris	Unconsolidated	Quaternary
	Erosional unconformity Tectonic activity	
Mineralization Quartz veining	Gold, silver, tungsten, Galena, sphalerite, chalcopyrite, tetrahedrite, arsenopyrite, pyrrhotite and pyrite Faulting and tectonic activity	

<u>Formation</u>	<u>Description/Event</u>	<u>Age</u>
Coast Crystalline Belt Intrusions	Quartz Monzonite, Granodiorite, Felsic and mafic dykes Faulting and tectonic activity	Tertiary and Earlier
Upper Hazelton sediments and Bitter Creek Formation	Argillite, limestone, conglomerate, sandstones, pelites and volcanics Tectonic activity	Lower to Middle Jurassic
Metamorphic equivalents of the Lower Hazelton sedimentary assemblage	Greenschist facies, phyllites, mylonites	Jura-Cretaceous

Structurally, the trend of the rock formations is north-northwesterly. Folding has produced anticlinal and synclinal axes in the sedimentary horizons on both the Gold Cliff and the Rufus-Argyle groups. Faulting is common both in the longitudinal and transverse directions relative to the fold structures.

Mineralization frequently follows fissure-type vein fillings along the contacts of quartz porphyry dykes. Veins on the Gold Cliff group extend northwesterly from the intrusive contact.

The Rufus-Argyle group is marked by a reddish brown gossan over a large portion of the claim group and appears to be the result of the oxidation of a finely disseminated and pervasive pyrite through most of the rock types in this area.

MINERALIZATION

The vein zones on the Gold Cliff and Rufus Argyle claim groups are a combination of fissure-filling and wall-rock replacement types. Quartz in veins and veinlets occupy the fissure-fracture openings and the sulphide minerals replace openings in the quartz and wall-rock. Metals characteristic of the area are gold, silver, copper, lead, zinc. Recently tungsten has been noted on frequent occasions. The sulphide minerals are pyrite, pyrrhotite, sphalerite, galena, chalcopyrite, tetrahedrite and often arsenopyrite when gold is present.

The Gold Cliff showings are about the 3,000-foot elevation. Although the workings are now caved-in, the trend of the mineralized structures is northwest (Figure 5) and the dip is relatively flat to the southwest. The veins occur in sediments that grade between argillites and impure sandstones. The dump below the portal of the No. 2 adit has considerable mineralized rock carrying quartz and sulphides. A selected grab sample taken from this dump showed galena, sphalerite, pyrite, pyrrhotite and fine veinlets of quartz in a skarn-hornfels host rock that exhibited a mauve color. This sample assayed as follows:

Sample #26199 -	Gold	-	0.012 oz
	Silver	-	15.25 oz
	WO ₃	-	0.05%

A contact of the sediments and a granodiorite intrusive trends northeasterly across the ground below the No. 2 Adit and the lower No. 1 adit (Figure 5).

On the Rufus-Argyle group a small adit now caved-in showed mineralized vein material in a brown oxidized host rock

FIGURE 5

GOLD CLIFF GROUP
SKETCH PLAN SHOWING
LOCATION OF
PROPOSED D.D. HOLES

FT. 0 10 20 30 40 60 80 FT.

SEPT. 5, 1979

Donald W. Tully, P. Eng.

Old Open Cut

No. 2 ADIT
(Reported to be 100'
in length - caved in)

Selected Grab
Sample No.

Old Open
Cut

VOLCANICS
GRANODIORITE

Old Open
Cut

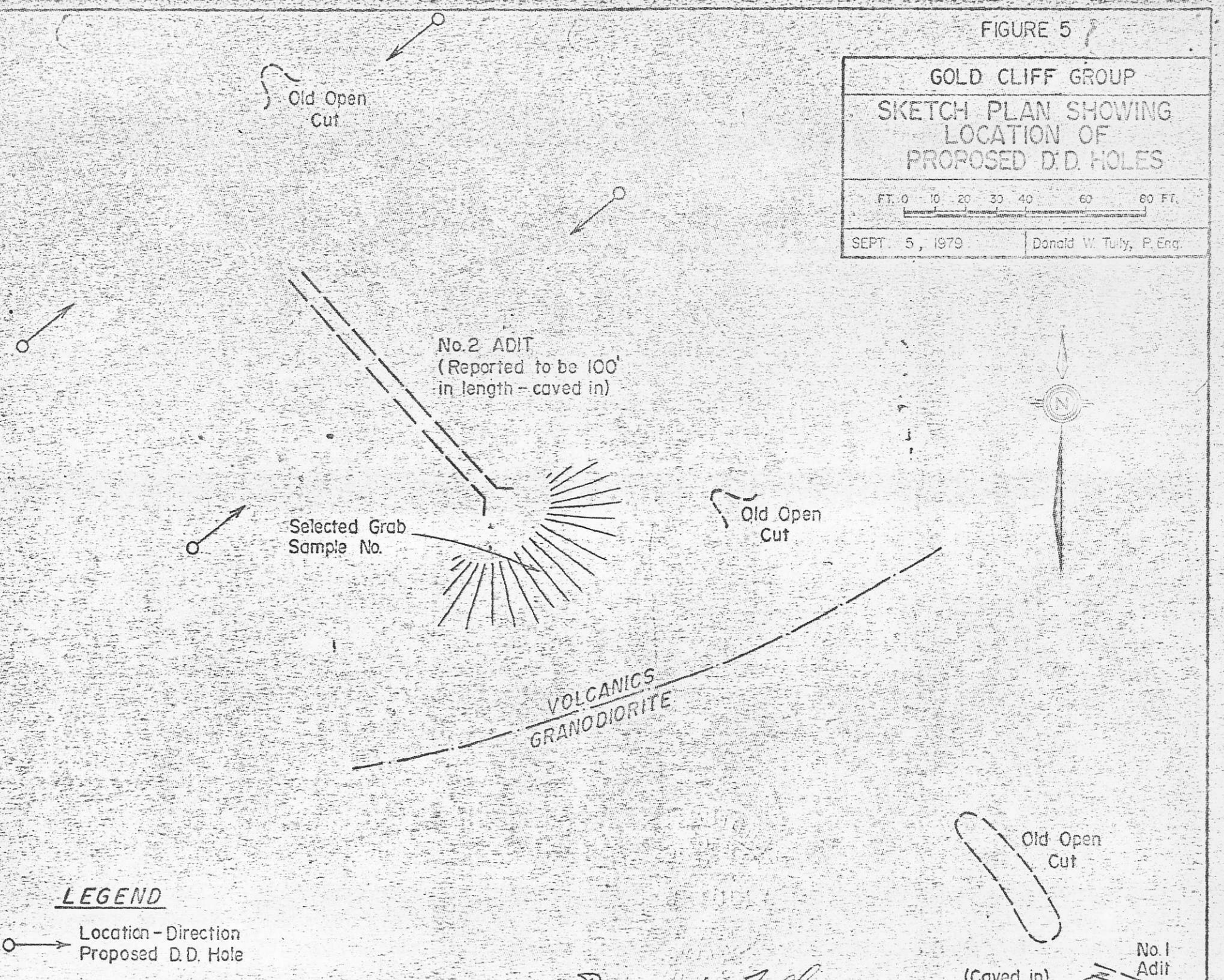
No. 1
Adit

(Caved in)
(Elev. 3000+)

LEGEND

○ → Location - Direction
Proposed D.D. Hole

Donald W. Tully



of apparent sedimentary origin. A selected grab sample of the mineralized vein on the dump below the adit assayed as follows:

Sample #26200	-	Gold	-	0.118 oz
		Silver	-	0.29 oz
		WO ₃	-	0.05%

Pyrite and pyrrhotite with quartz were noted in the sample taken.

RECOMMENDATIONS

It is proposed a geologist and helper map the old workings on the Gold Cliff and Rufus-Argyle claim groups.

It is recommended that the mineralized quartz vein structures in the old workings on both the Gold Cliff and Rufus-Argyle properties be tested by diamond drilling. No evidence of previous drill testing was observed by the writer during the field examination.

It is proposed that the recommended drill test be supported by helicopter transport rather than attempt to construct a tractor road to the property.

ESTIMATED COST OF THE PROPOSED WORK PROGRAM

The location of the diamond drill holes proposed on the Gold Cliff and Rufus-Argyle claim groups are shown on Figures 5 and 6.

N

Glaciero
Old Tunnel



FIGURE 6
 PLAN SHOWING
 LOCATION OF
 PROPOSED D.D. HOLES
 RUFUS ARGYLE GROUP

Scale 1" = 1500'
 Sept. 5, 1979

Location - Direction of Proposed Diamond Drill Holes

4875 | 4553 | 4550 | 4550

Geological mapping of the Gold Cliff
and Rufus-Argyle claim groups \$ 5,000

GOLD CLIFF

1. Construction of four drill site locations, use of a gas-powered rock drill, timber, supplies and helicopter	\$ 4,800	
2. To diamond drill four holes of BQ core size wireline drilling and each hole 250 feet in depth (4 x 250 = 1,000 ft. x \$25/ft.)	25,000	
Fuel, mobilization and demobilization	6,000	
Helicopter transport of men, fuel and supplies to job from Stewart daily (2½ hours x 20 days x \$390/hr.)	19,500	
Crew accommodation, travel, supervision, core-handling, assaying and engineering evaluation @ 15% of \$55,300.	8,295	
		<hr/>
Estimated cost		63,595

RUFUS-ARGYLE

1. Construction of four drillsite locations		
Use of gas-powered rock-drill, timber, supplies and helicopter	4,800	
2. To diamond drill four BQ wireline holes, each hole 250 feet in depth (4 x 250 = 1,000 feet x \$25/ft.)	25,000	
Fuel, mobilization and demobilization	6,000	
Helicopter transport of men, fuel and supplies to and from jobsite and Stewart daily (3 hrs. x 20 days x \$390/hr) including moves between drill sites	23,400	
		<hr/>
Carried Forward	\$59,200	68,595

Brought Forward	\$59,200	68,595
-----------------	----------	--------

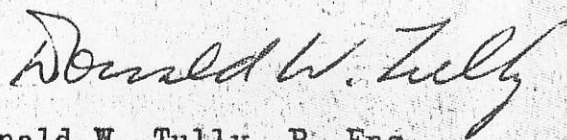
Crew accommodation, travel costs,
supervision, core-handling, assay-
ing and engineering evaluation
@ 15% of \$59,200

	<u>8,880</u>	
--	--------------	--

Estimated cost		<u>68,080</u>
----------------	--	---------------

Estimated total cost		<u><u>\$136,675</u></u>
----------------------	--	-------------------------

Respectfully submitted,



Donald W. Tully, P. Eng.

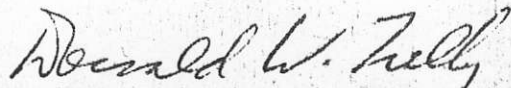
September 5, 1979

CERTIFICATE

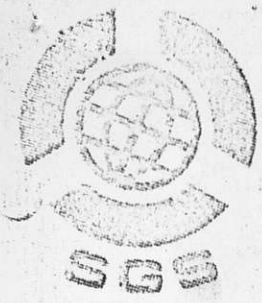
I, DONALD WILLIAM TULLY, of the Municipality of West Vancouver, Province of British Columbia, hereby certify as follows:

1. I am a Consulting Geologist with an office at Suite 102, 2222 Bellevue Avenue, West Vancouver, British Columbia.
2. I am a registered Professional Engineer in the Provinces of British Columbia and Ontario.
3. I graduated with a degree of Bachelor of Science, Honours Geology, from McGill University in 1943.
4. I have practiced my profession for thirty-four years.
5. This report dated September 5, 1979 is based on a personal knowledge of the area from work done in 1973, 1974 and 1975, and from a personal field examination on August 13, 1979.
6. I have no direct, indirect or contingent interest in the Gold Cliff and Rufus-Argyle claim groups or the securities of Kingdom Resources Ltd., nor do I intend to receive any interest..
7. Written permission is required from the writer to publish this report in any Prospectus or Statement of Material Facts.

DATED at West Vancouver in the Province of British Columbia this 5th day of September, 1979.



Donald W. Tully, P. Eng.,
Consulting Geologist



GENERAL TESTING LABORATORIES

DIVISION SUPERINTENDENCE COMPANY (CANADA) LTD

1001 EAST PENDER ST., VANCOUVER, B.C., CANADA, V6A 1W2
 PHONE (604) 254-1647 TELEX 04-507514 CABLE SUPERVISE

TO:
DON TULLY ENGINEERING LTD.
 102 - 2222 Bellvue Avenue
 West Vancouver, B.C.
 V7V 1C7

CERTIFICATE OF ASSAY

No.: 7908-1751 DATE: Aug. 23/79

We hereby certify that the following are the results of assays on: Ore

MARKED	GOLD	SILVER	Tungsten oxide	XXX	XXX	XXX	XXX	XXX
	oz/st	oz/st	WO ₃ (%)					
26199 C	0.012	15.25	trace					

NOTE: REJECTS RETAINED ONE MONTH. PULPS RETAINED THREE MONTHS. ON REQUEST PULPS AND REJECTS WILL BE STORED FOR A MAXIMUM OF ONE YEAR.

ALL REPORTS ARE THE CONFIDENTIAL PROPERTY OF CLIENTS. PUBLICATION OF STATEMENTS, CONCLUSION OR EXTRACTS FROM OR REGARDING OUR REPORTS IS NOT PERMITTED WITHOUT OUR WRITTEN APPROVAL. ANY LIABILITY ATTACHED THERETO IS LIMITED TO THE FEE CHARGED.

L. Wong

PROVINCIAL ASSAYER

GENERAL TESTING LABORATORIES

DIVISION SUPERINTENDENCE COMPANY (CANADA) LTD.

1001 EAST PENDER ST., VANCOUVER, B.C., CANADA, V6A 1W2
 PHONE (604) 254-1647 TELEX 04-507514 CABLE SUPERVISE

CERTIFICATE OF ASSAY

TO: **DON TULLY ENGINEERING LTD.**
 102 - 2222 Bellvue Avenue
 West Vancouver, B.C.
 V7V 1C7

No.: 7908-1750 DATE: August 23/79

We hereby certify that the following are the results of assays on: **Ore**

MARKED	GOLD	SILVER	Tungsten oxide	XXX I	XXX	XXX	XXX	XXX
	oz/st	oz/st	WO ₃ (%)					
26200 C	0.118	0.29	< 0.05					

NOTE: REJECTS RETAINED ONE MONTH. PULPS RETAINED THREE MONTHS. ON REQUEST PULPS AND REJECTS WILL BE STORED FOR A MAXIMUM OF ONE YEAR.

ALL REPORTS ARE THE CONFIDENTIAL PROPERTY OF CLIENTS. PUBLICATION OF STATEMENTS, CONCLUSION OR EXTRACTS FROM OR REGARDING OUR REPORTS IS NOT PERMITTED WITHOUT OUR WRITTEN APPROVAL. ANY LIABILITY ATTACHED THERETO IS LIMITED TO THE FEE CHARGED.

L. Wong
 PROVINCIAL ASSAYER

Lucille #1 - 4185 - m-249 Record no.

~~Coyne #1 - 4185~~

~~Bayview #1 - 4185~~

25th January, 1967

The Directors
Crest Ventures Ltd
Suite 10 - 338 Howe Street
Vancouver, B.C.

Gentlemen:

It has come to my attention that an omission was made in our summary report dated 13th January, 1967.

During the month of August, 1966, Mr. H. Tibbo examined a showing on the Rufus # 6 claim. This showing is reported to have been observed by a prospector in 1963 under the direction of Mr. F. Ivico, consultant.

A rock slide has apparently exposed the vein, however, a cliff overhangs the vein making working conditions difficult and unsafe.

The vein dips into the mountain at +38° and is exposed for a distance of 30 feet horizontally and 50 feet up-dip. The vein itself has a width of about one foot where it is exposed above the slide debris, however the footwall of the vein is mineralized with argentiferous galena and sphalerite for an additional 8 feet.

Because of the unsafe working conditions at the site only grab samples could be obtained, one of which assayed 205.9 ounces of silver and 65% lead.

Further work could not be carried out because of the lateness of the season, however a thorough examination of this important discovery should be made as soon as conditions permit. This work should consist of detailed sampling by trenching and diamond drilling to determine the extent of the mineralized zone.

Yours very truly,

A.G.A. Howe & Associates Ltd.

W.G. Timmins.