

PASS PROPERTY
520881
93L/12

Grab Sample from dump - Ave of samples is
8.50oz Au / 2.99oz Ag / 18% Cu / 8.42% Pb / 1.16% Zn

0.2M
7.31/51.1/0.48/3.0/1.1
15

ORE SHOOT
Au, Ag, Pb, Zn

1.49 oz Au
36 oz Au
12.34/51.15/3.69/4.15
1.8m.

0.2 oz Au
0.2 oz Ag
0.12% Cu
0.97% Pb
0.97% Zn
22.2g Au, 88.1g Ag
1.8
Ave. 55 samples.

0.87/2.97/6.11/9.83/1.33
0.68m Ave 25 samples

1.51/9.2/1.12/58/0.3
2-3m

0.71/4.0/0.28/0.08/0.06
0.9m
39.53/56.9/0.75/3.67/2.37
30m up slope from 17046

15m up slope from 17046, 47

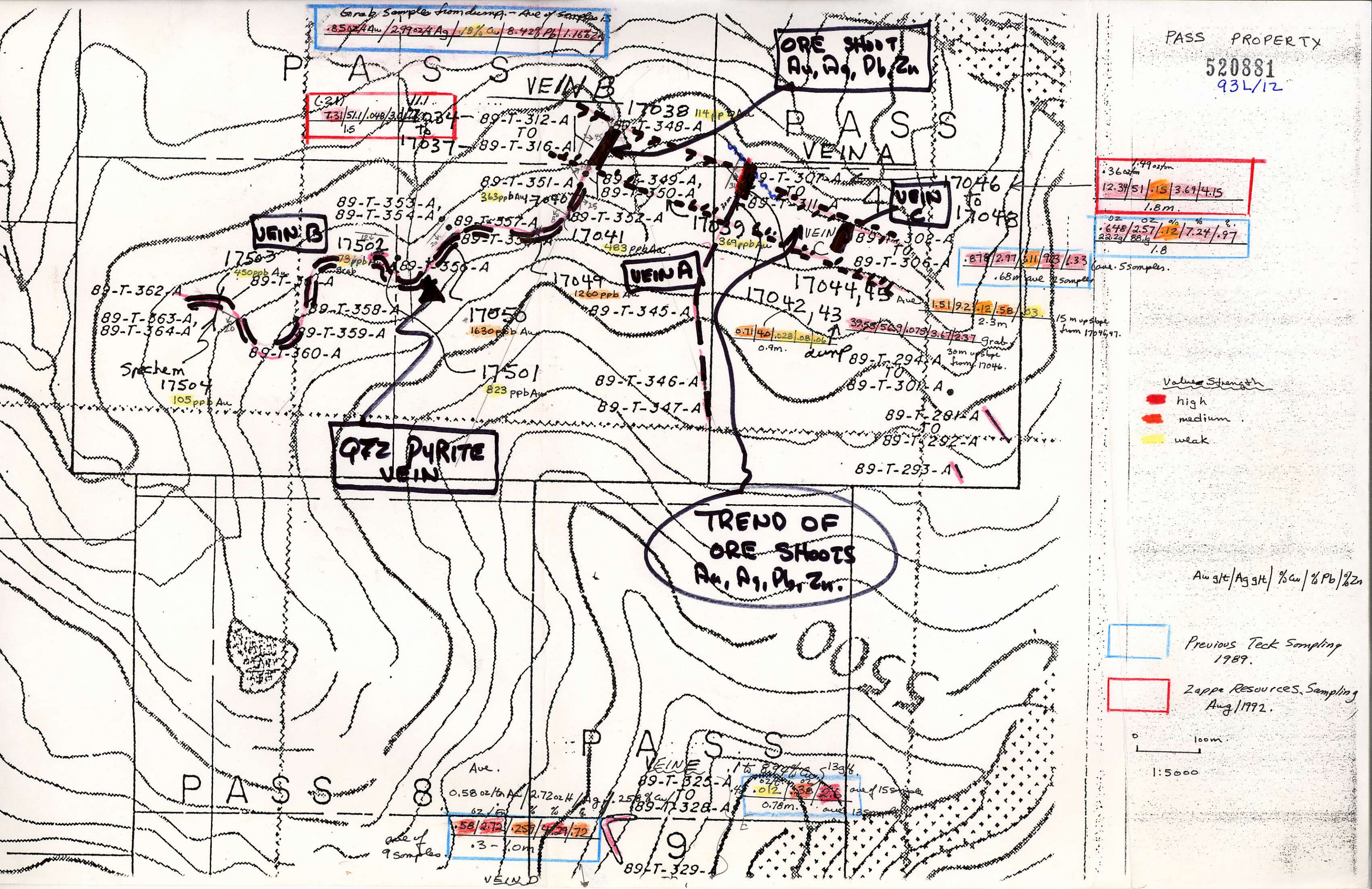
Value Strength
█ high
█ medium
█ weak

Au g/t / Ag g/t / % Cu / % Pb / % Zn

Previous Teck Sampling 1989.

Zappe Resources Sampling Aug/1992.

0 100m
1:5000



QZ2 PYRITE VEIN

TREND OF ORE SHOOTS
Au, Ag, Pb, Zn.

PASS

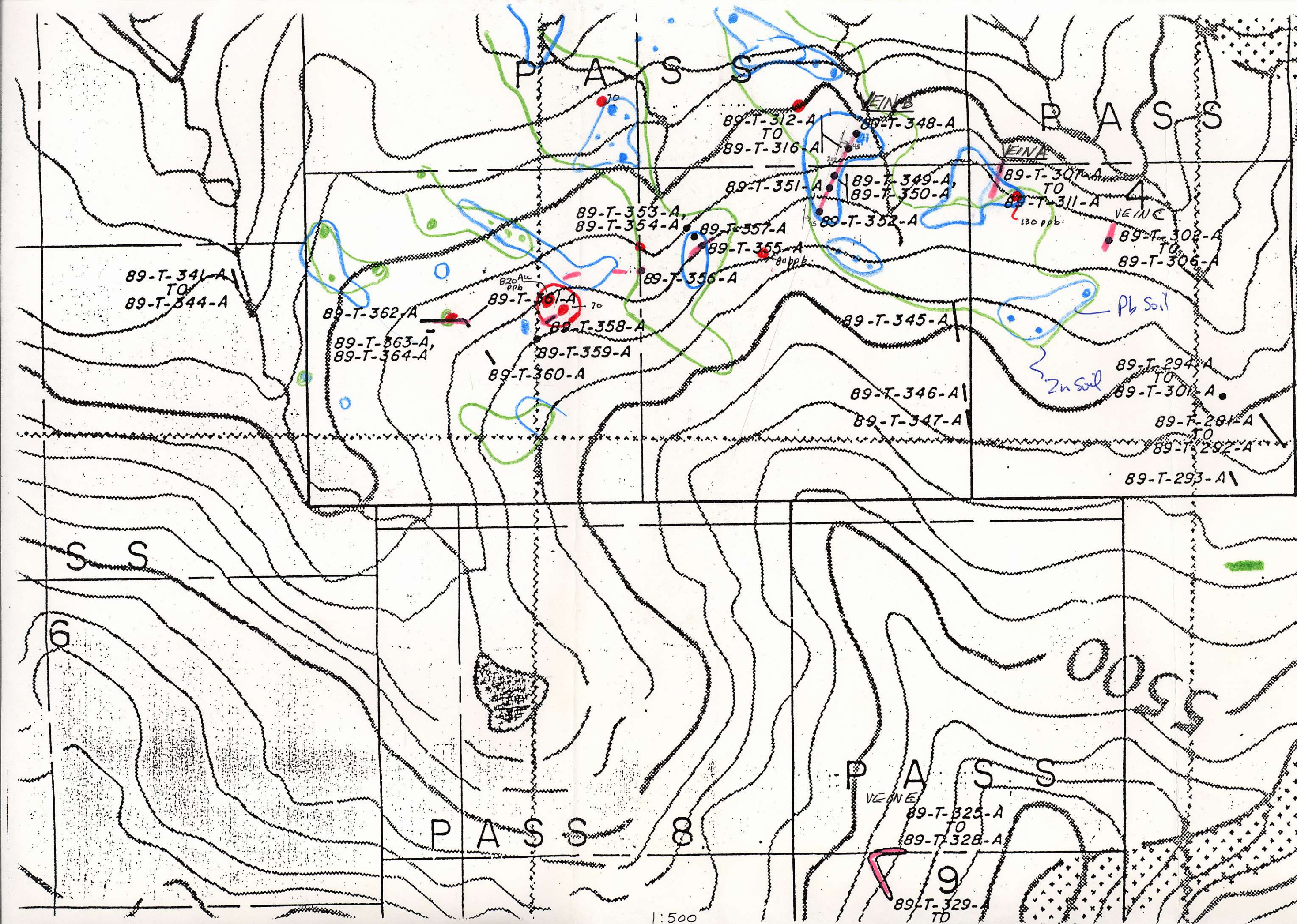
PASS

OUTCROPS

Ave.
0.58 oz Au / 2.72 oz Ag / 2.5% Cu / 0.12% Pb / 0.26% Zn
0.78m
0.3-1.0m
ave of 9 samples

1 to 8.90% Cu 5.13% Pb
0.27% Ag
0.12% Au
ave of 150 samples
0.78m
ave 135 samples

89-T-329-A



89-T-341-A
TO
89-T-344-A

89-T-362-A
89-T-363-A,
89-T-364-A

89-T-351-A
89-T-353-A,
89-T-354-A
89-T-355-A
89-T-356-A
89-T-357-A
89-T-358-A
89-T-359-A
89-T-360-A

89-T-345-A
89-T-346-A
89-T-347-A

89-T-312-A
TO
89-T-316-A
89-T-348-A
89-T-349-A,
89-T-350-A
89-T-352-A
89-T-301-A
TO
89-T-311-A
89-T-302-A
TO
89-T-306-A

89-T-294-A
TO
89-T-301-A
89-T-291-A
TO
89-T-292-A
89-T-293-A

1:500

Pb in
Au ppb
Zn ppm