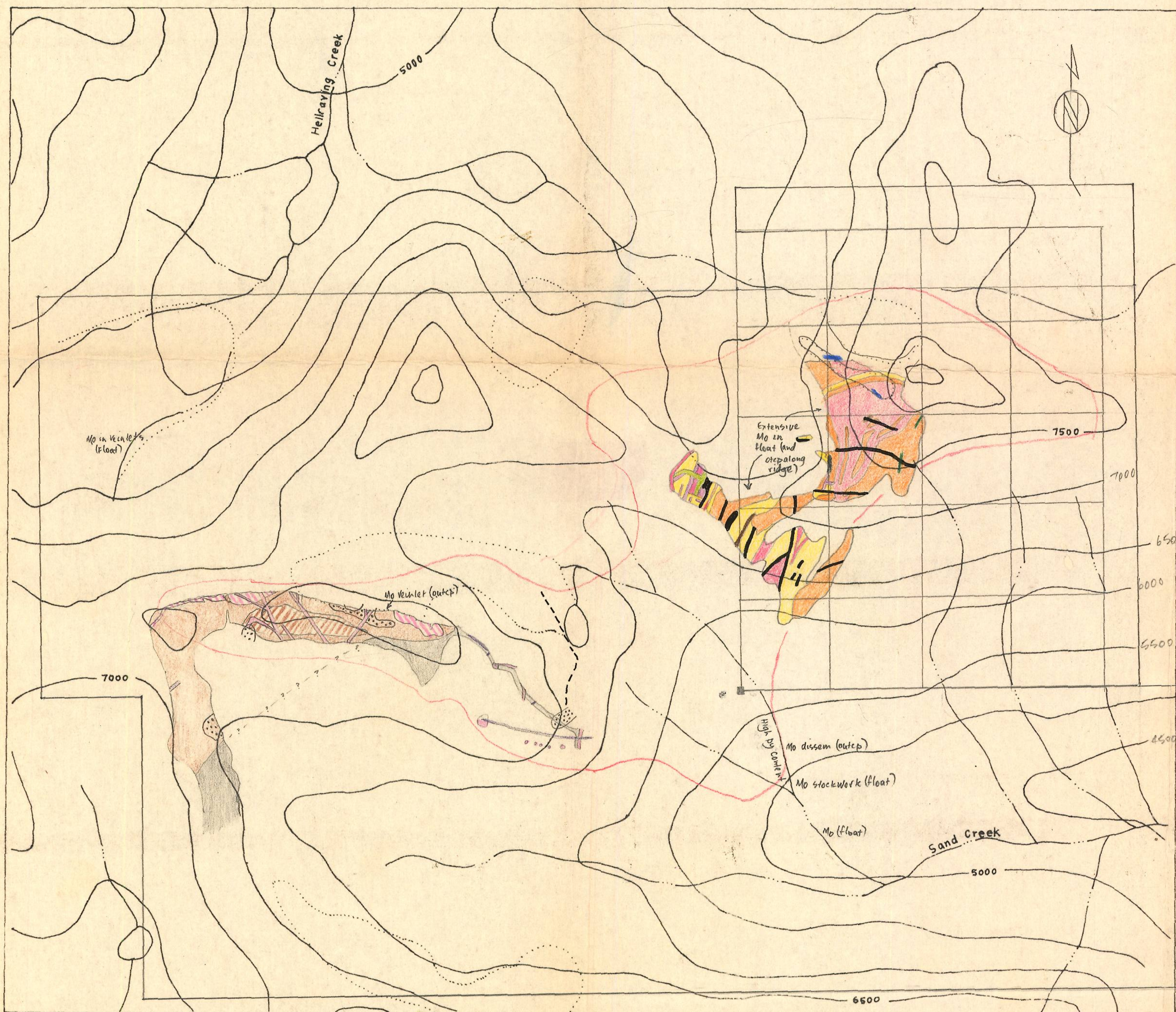


Rust down



Glacier
~~Molydenum float~~

- Heavy pyrite halo
- High fracture density
- 1 Trachyte
- 2 Aplite
- 3 Lamprophyre
- 4 Quartz vein
- 5 Quartz feldspar porphyry
- 6 Porphyritic quartz felsite
- 7 Quartz monzonite porphyry
- 8 Gneiss
- 9 gneissic diorite, mafic dykes
- 10 Rusty biotite granodiorite
- 11 Biotite granite (coarse porphyritic)
- 12 Biotite granite (medium granular)
- 13 Biotite granite (very porphyritic)
- 14 Micromonzonite dyke

Esperanza Explorations Ltd.

SAND PROPERTY
- Clinton M.D. district

COMPOSITE GEOLOGIC PLAN
(After 1" = 400' maps by Phillips Petroleum
and Cities Services)

Scale 1:19,000

FIGURE D

520751
92N/11E

