

520623 um Project 92H/10W

(1803)

2S

4000

4100

3S

3750

4S

weak to m  
serpe

3550

5W 2S

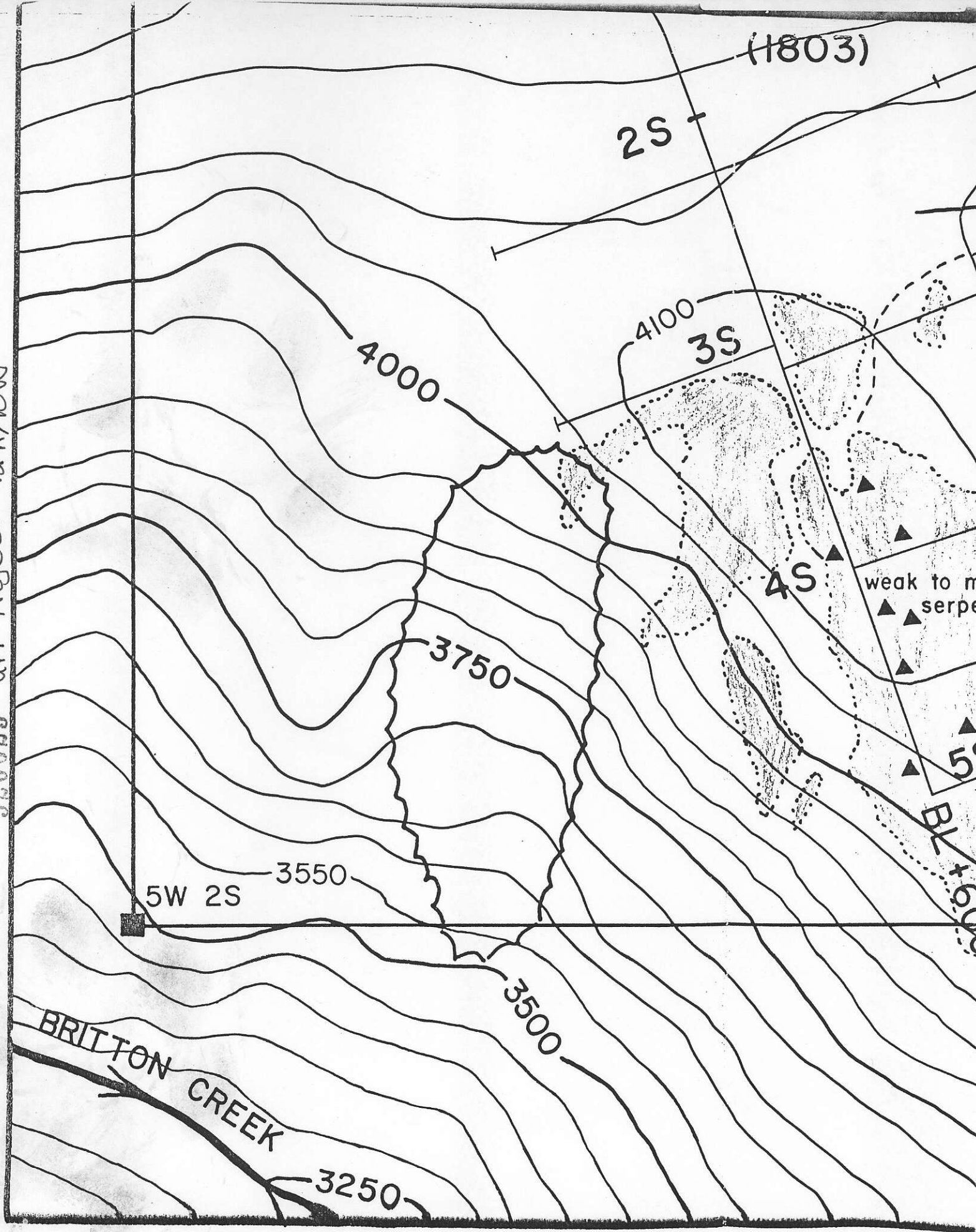
5S

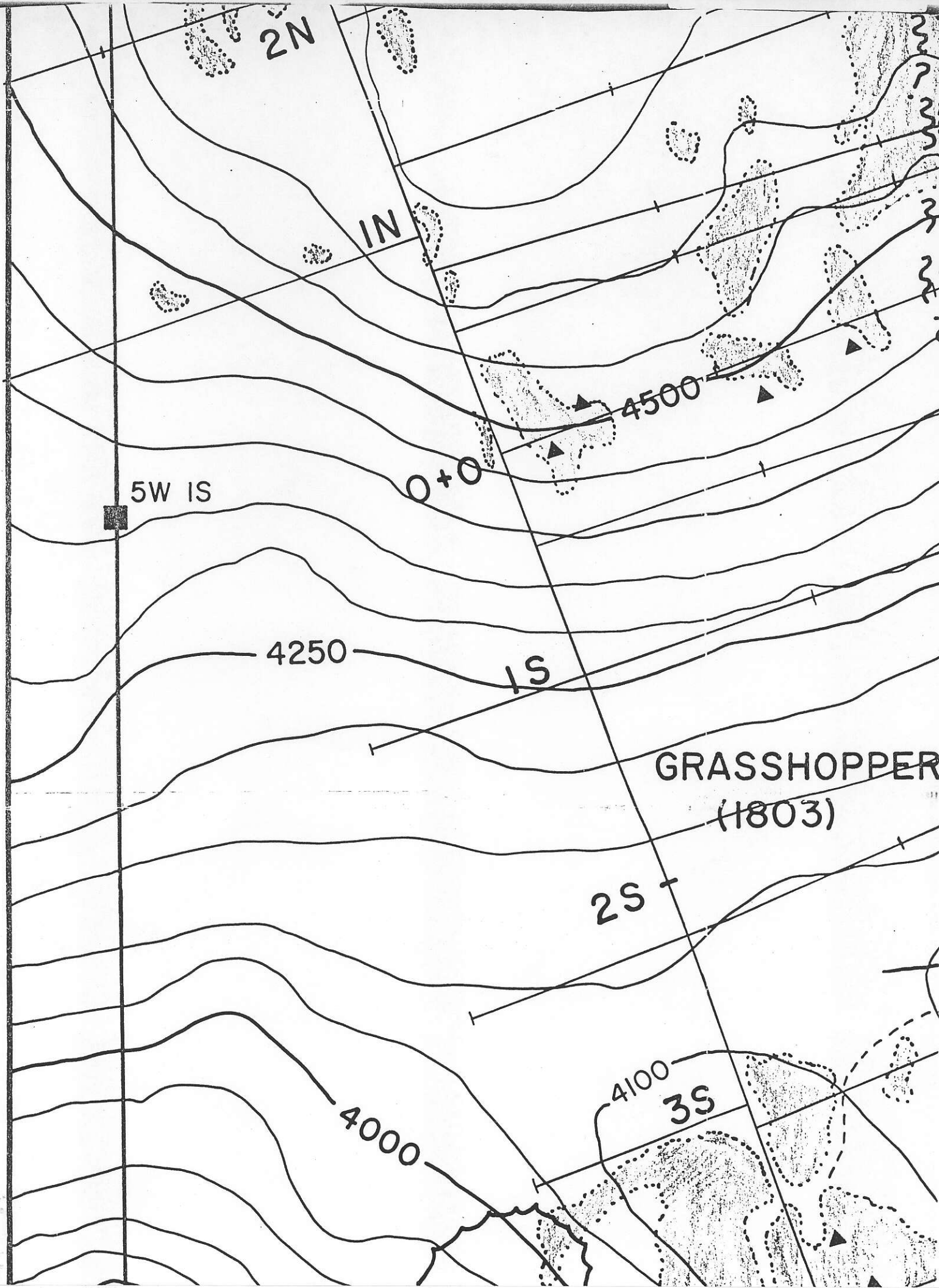
BL/1600

3500

BRITTON CREEK

3250





2N

IN

5W IS

0+0

4500

4250

1S

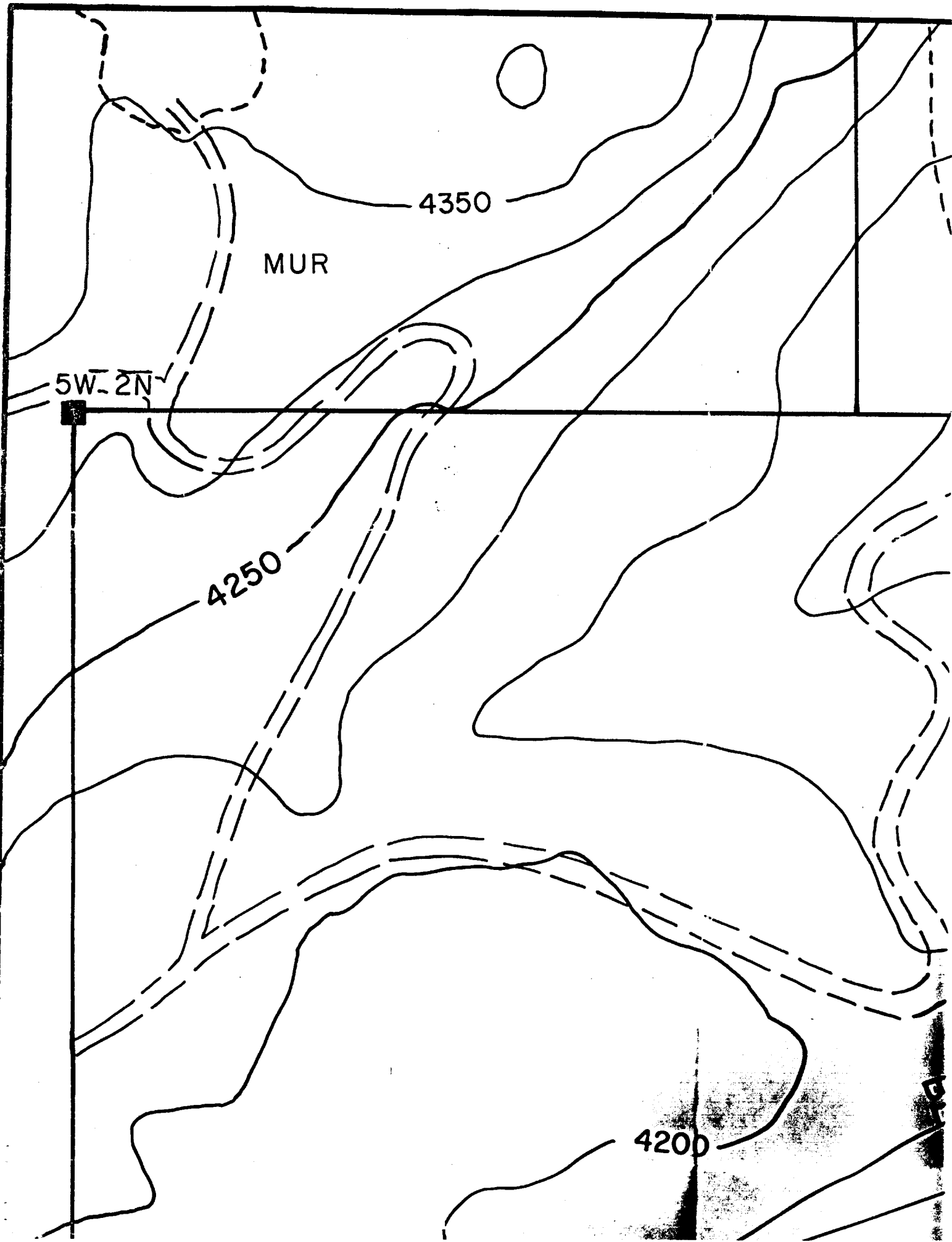
GRASSHOPPER  
(1803)

2S

4000

4100

3S



4350

MUR

5W-2N

4250

4200

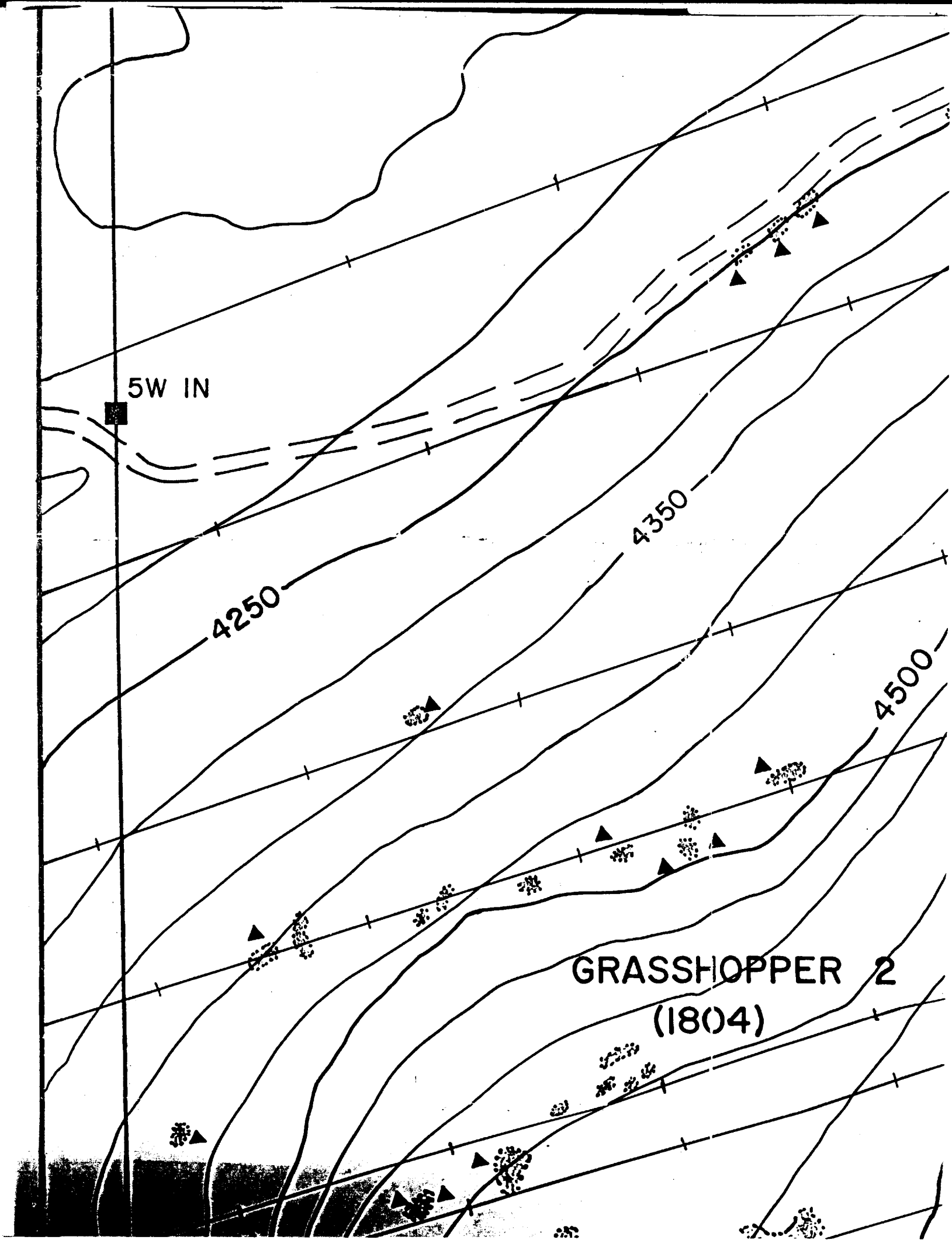
5W IN

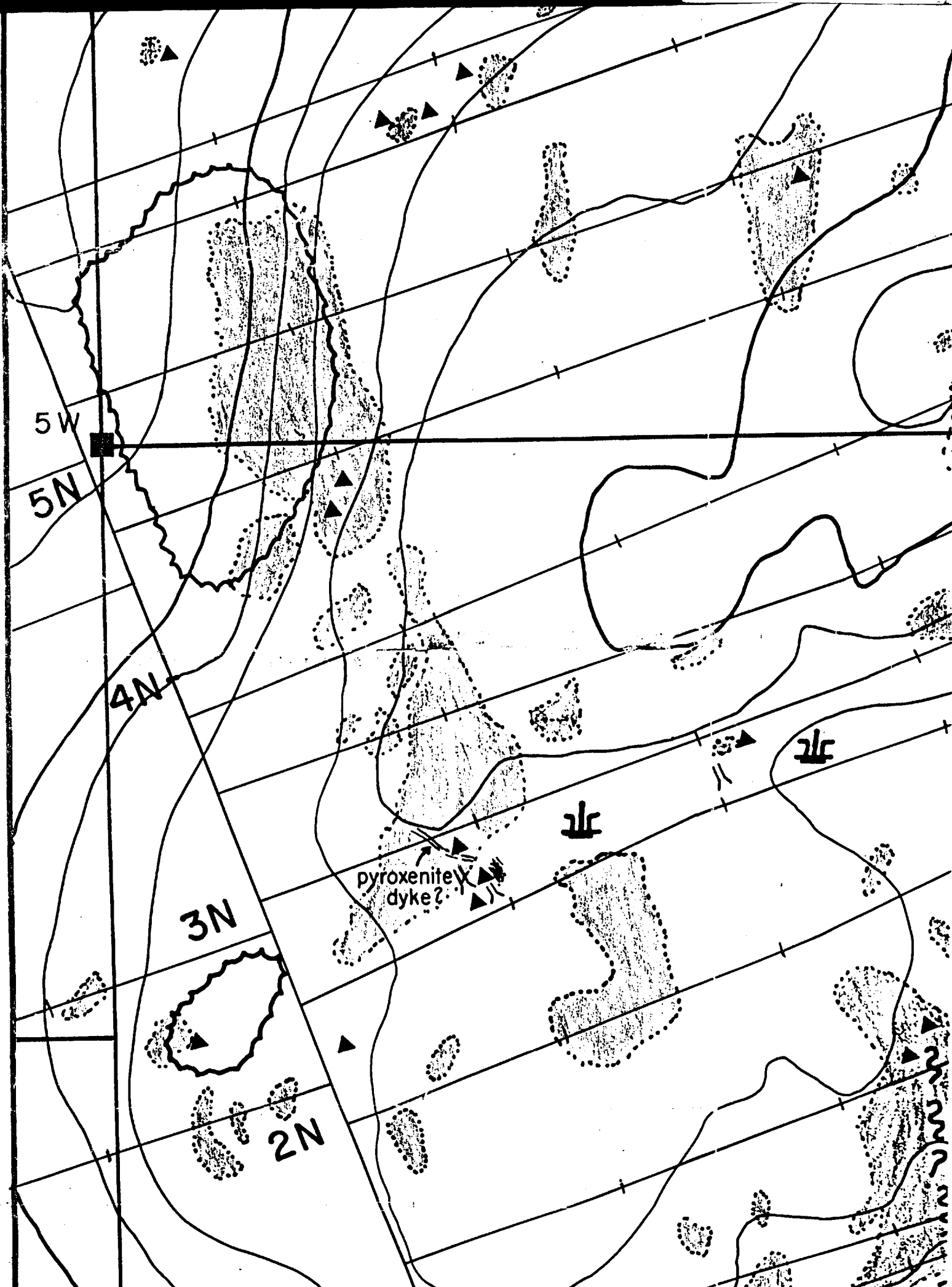
4250

4350

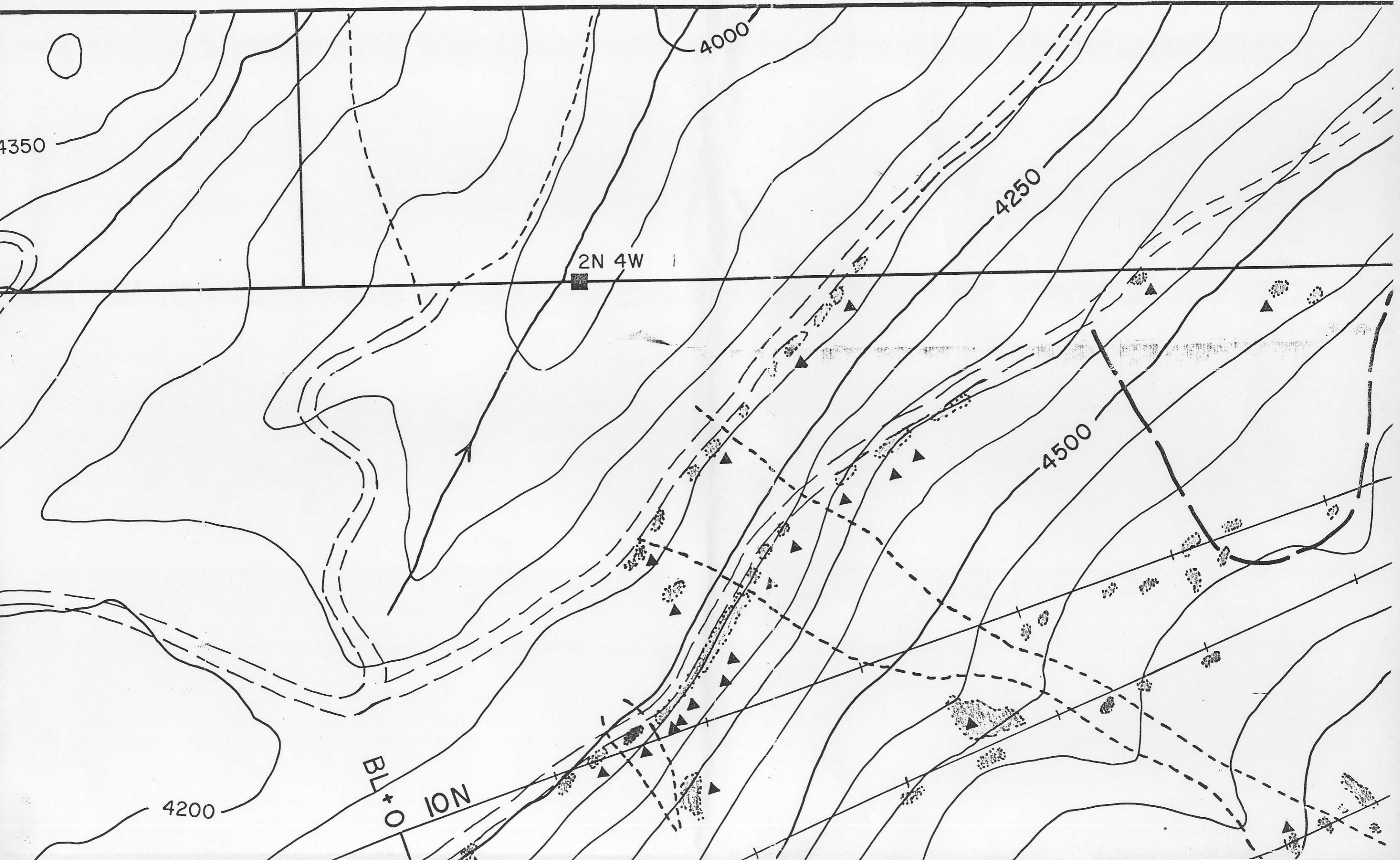
4500

GRASSHOPPER 2  
(1804)

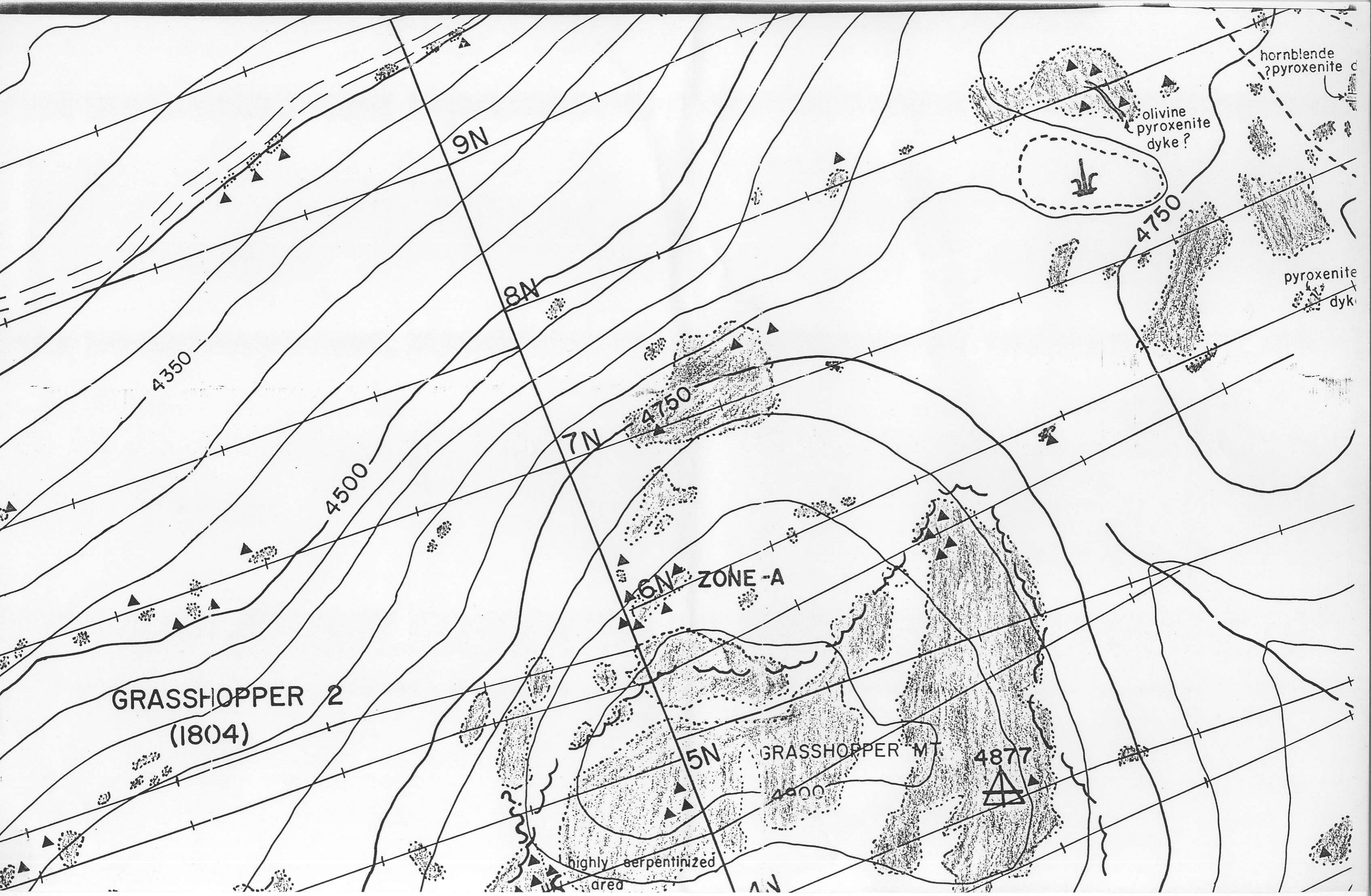




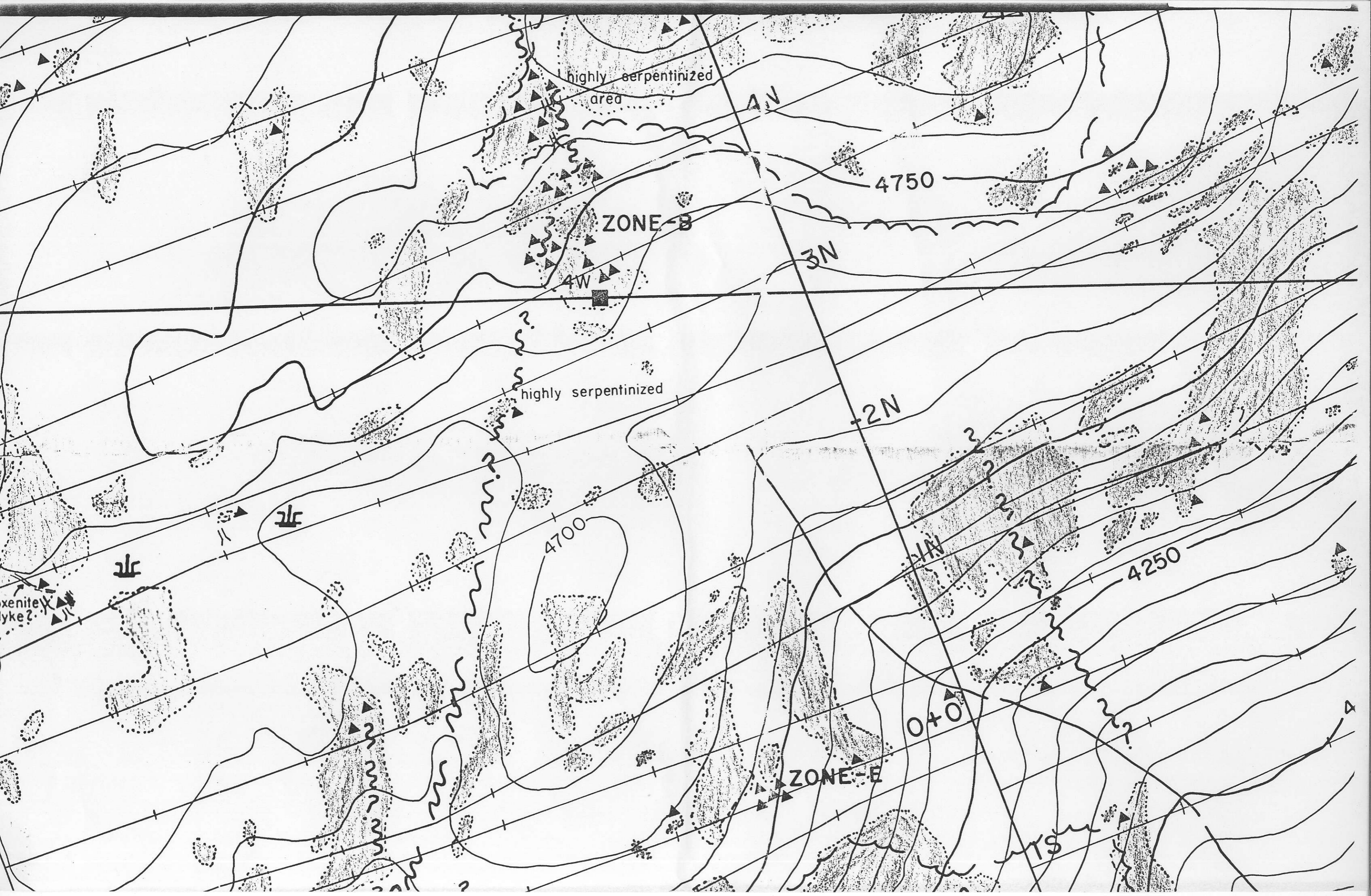












highly serpentinized  
area

ZONE-B

4W

highly serpentinized

4700

4750

4250

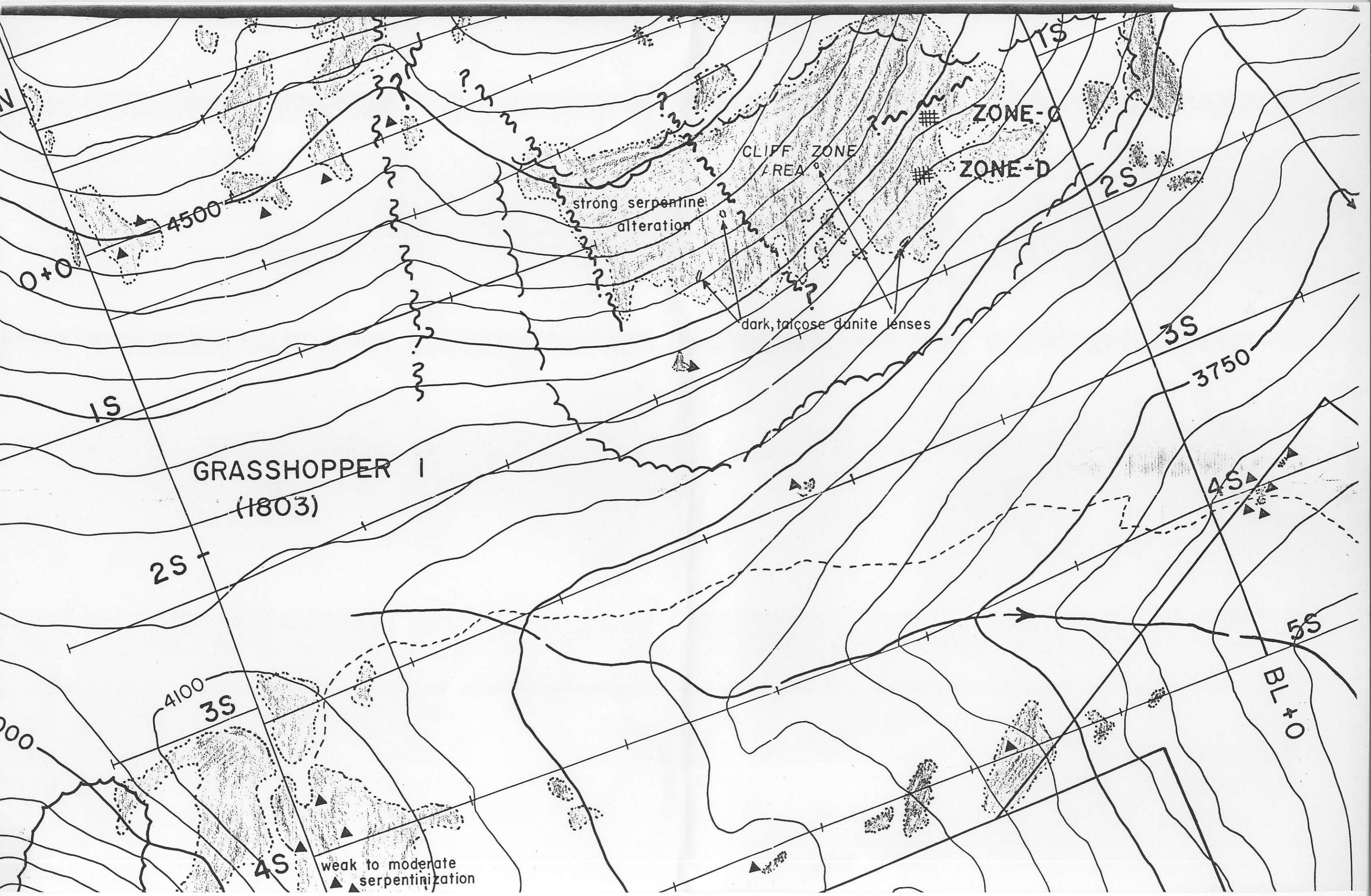
ZONE-E

oxenite  
pyke?

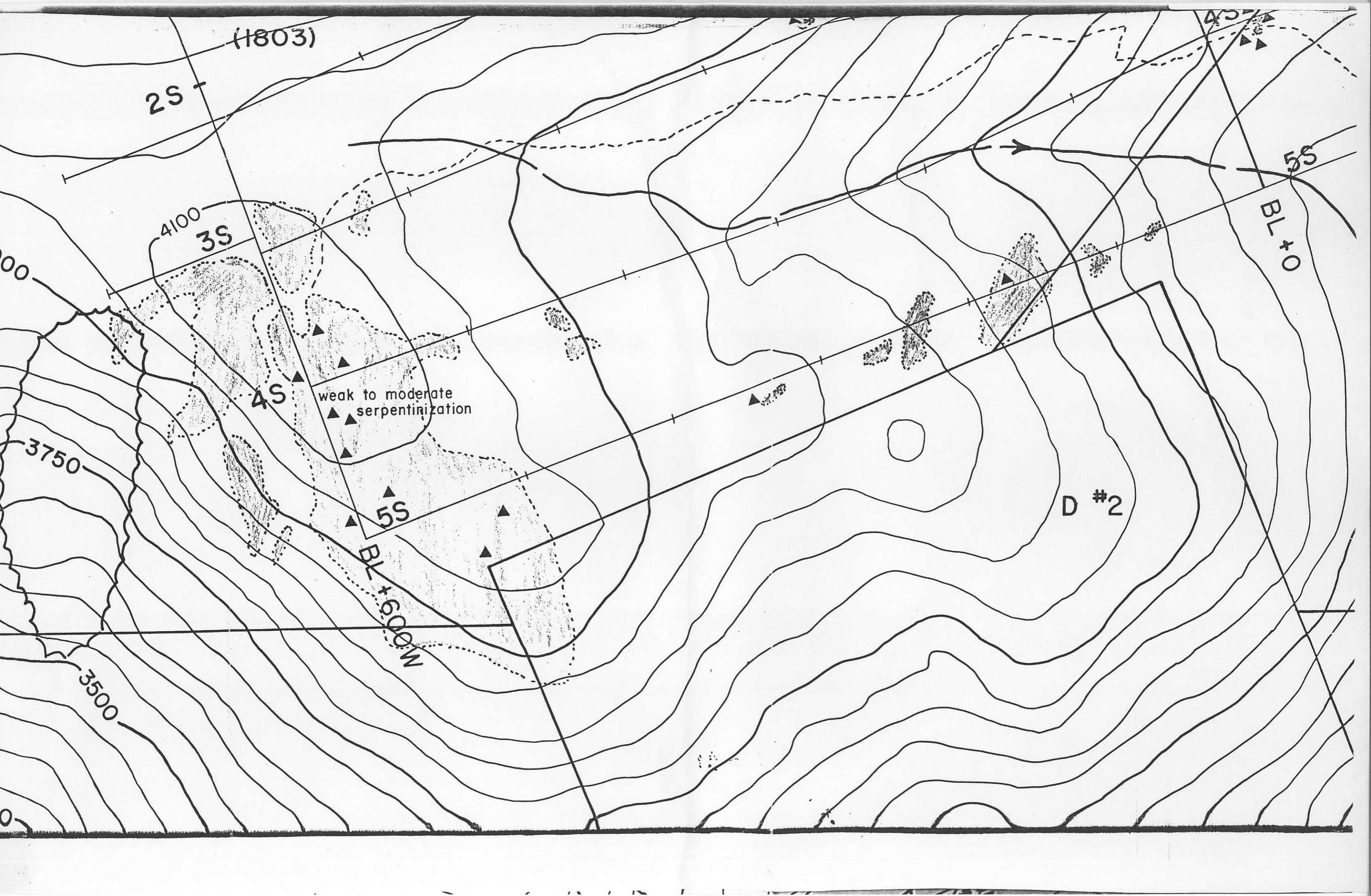
0+0

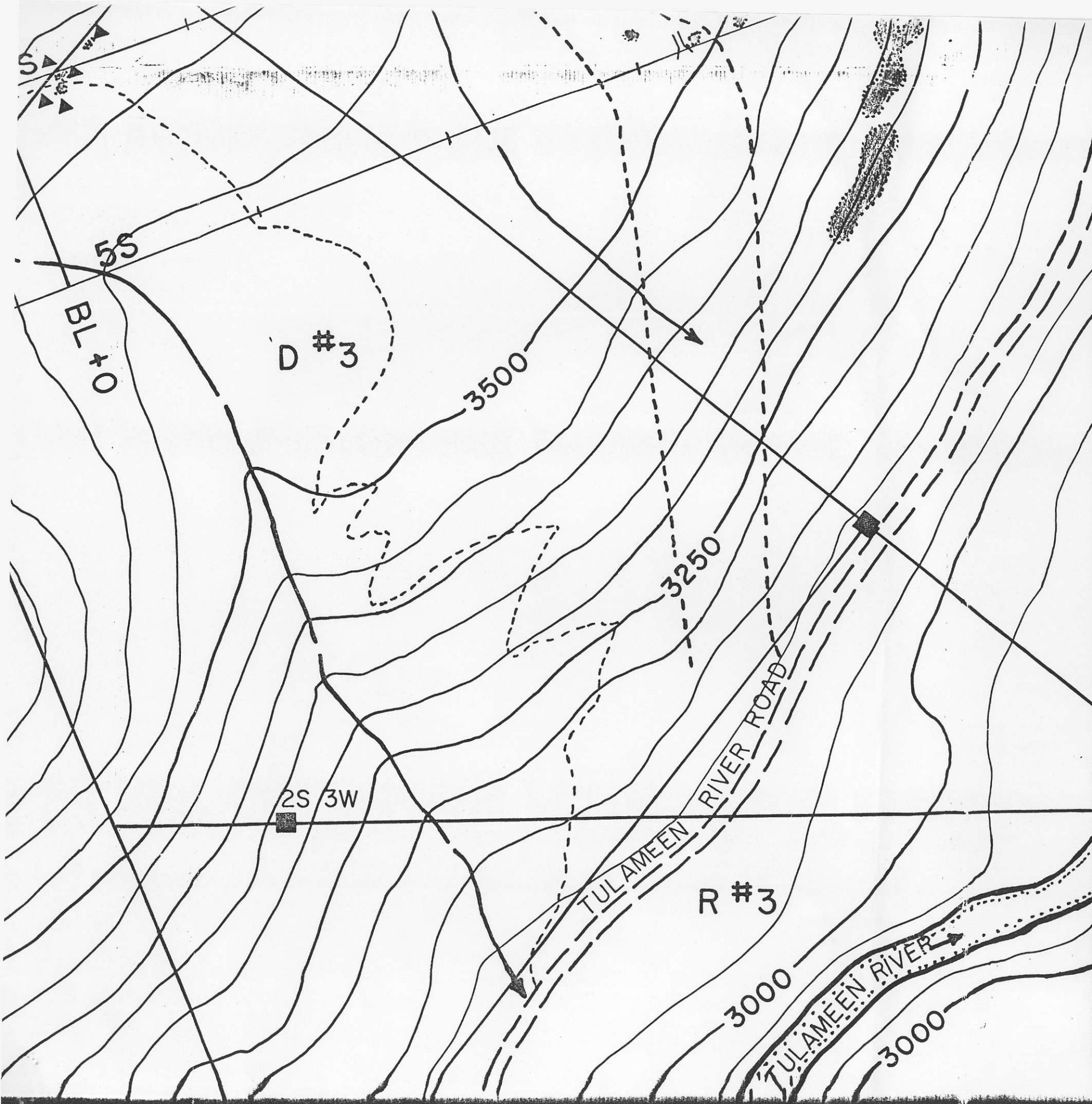
MS







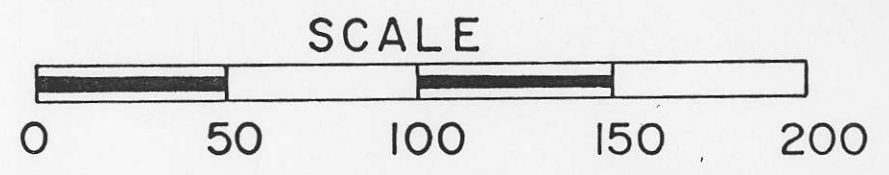




- ▲ Rock chip sample location from 1987 field program
- ⋈ Open, exposed area outlined
- ⊕ Survey control point
- ⋈ Wet or marshy area
- Intermittent creek gully
- ⋯ Trail
- - - Logging road
- | L 2 N Grid line (marked off in 100m intervals)
- Claim boundary (no posts were placed)
- 3500 Contour lines (50ft. contour intervals)

grid lines surveyed by chain and compass

### MAP 1



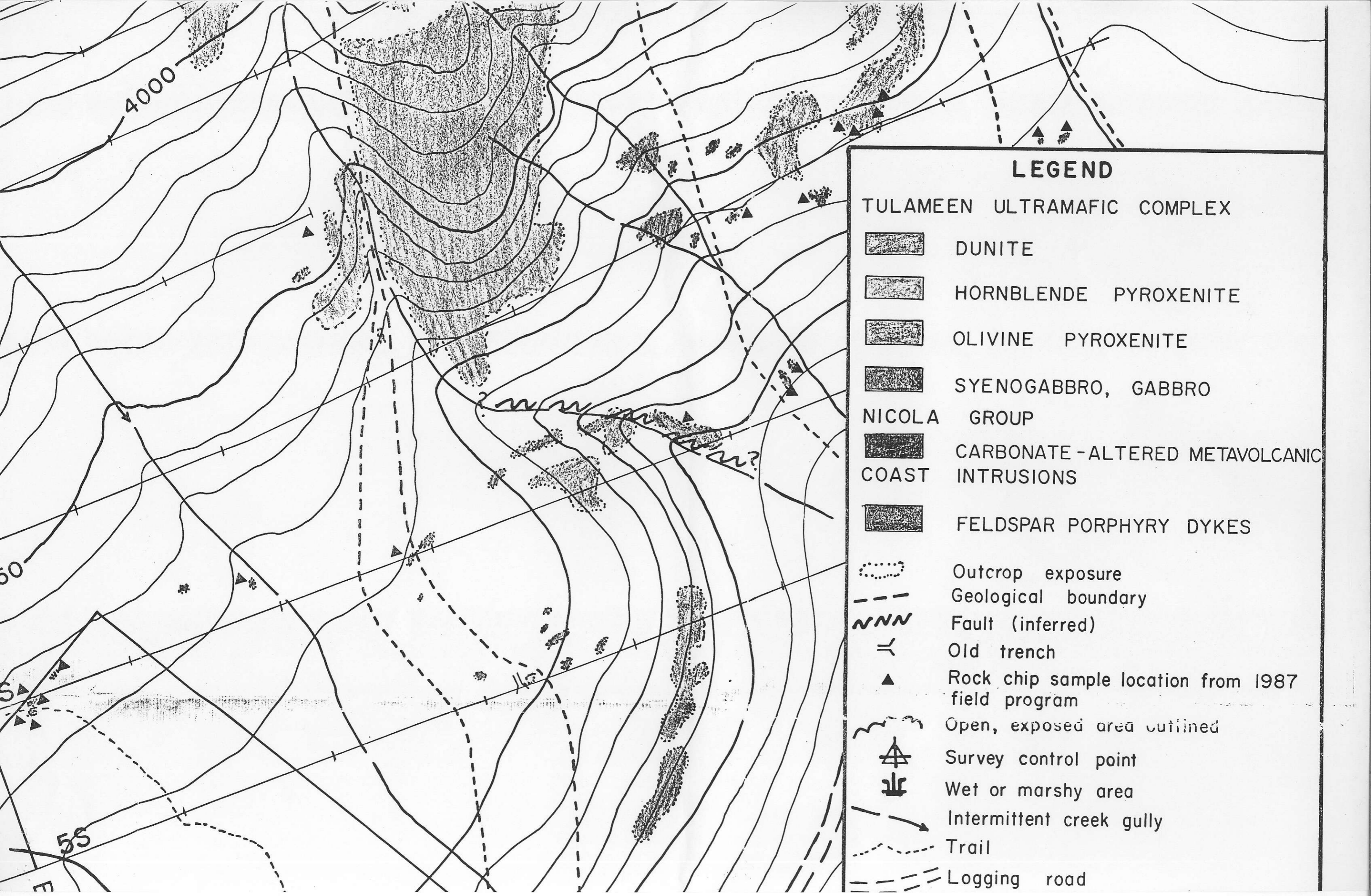
NEWMONT EXPLORATION OF CANADA LIMITED

## UM PROJECT GEOLOGY

SIMILKAMEEN MINING DIVISION

SCALE: 1:2000	LOCATION: NTS 92H/10W	DATE: JAN. 25, 1988
SURVEY BY: D.B.	DRAWN BY: D.B.	NUMBER: MAP 1

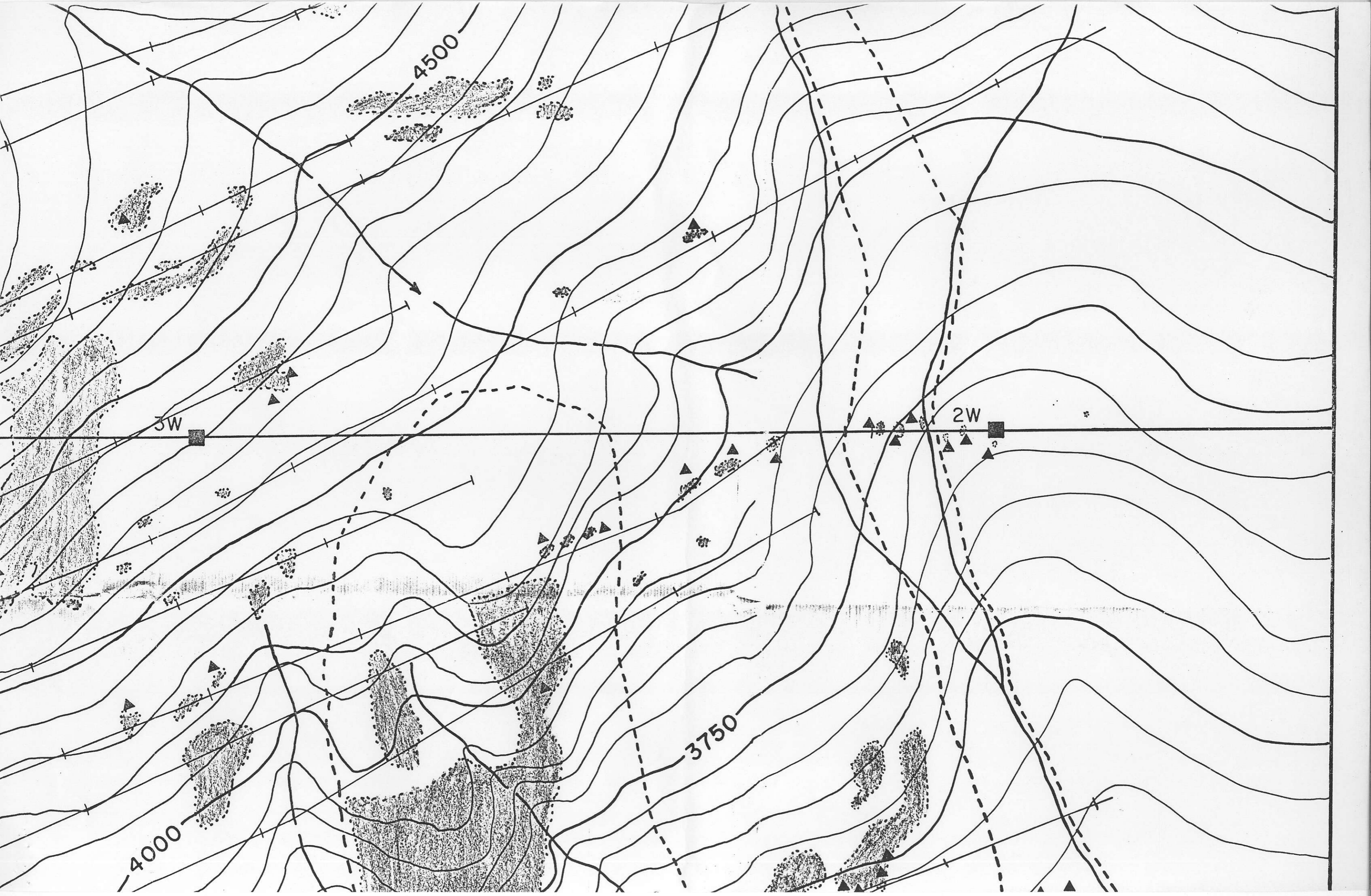




### LEGEND

- TULAMEEN ULTRAMAFIC COMPLEX
- DUNITE
- HORNBLLENDE PYROXENITE
- OLIVINE PYROXENITE
- SYENOGABBRO, GABBRO
- NICOLA GROUP
- CARBONATE-ALTERED METAVOLCANIC INTRUSIONS
- COAST
- FELDSPAR PORPHYRY DYKES
- Outcrop exposure
- Geological boundary
- Fault (inferred)
- Old trench
- Rock chip sample location from 1987 field program
- Open, exposed area outlined
- Survey control point
- Wet or marshy area
- Intermittent creek gully
- Trail
- Logging road





4500

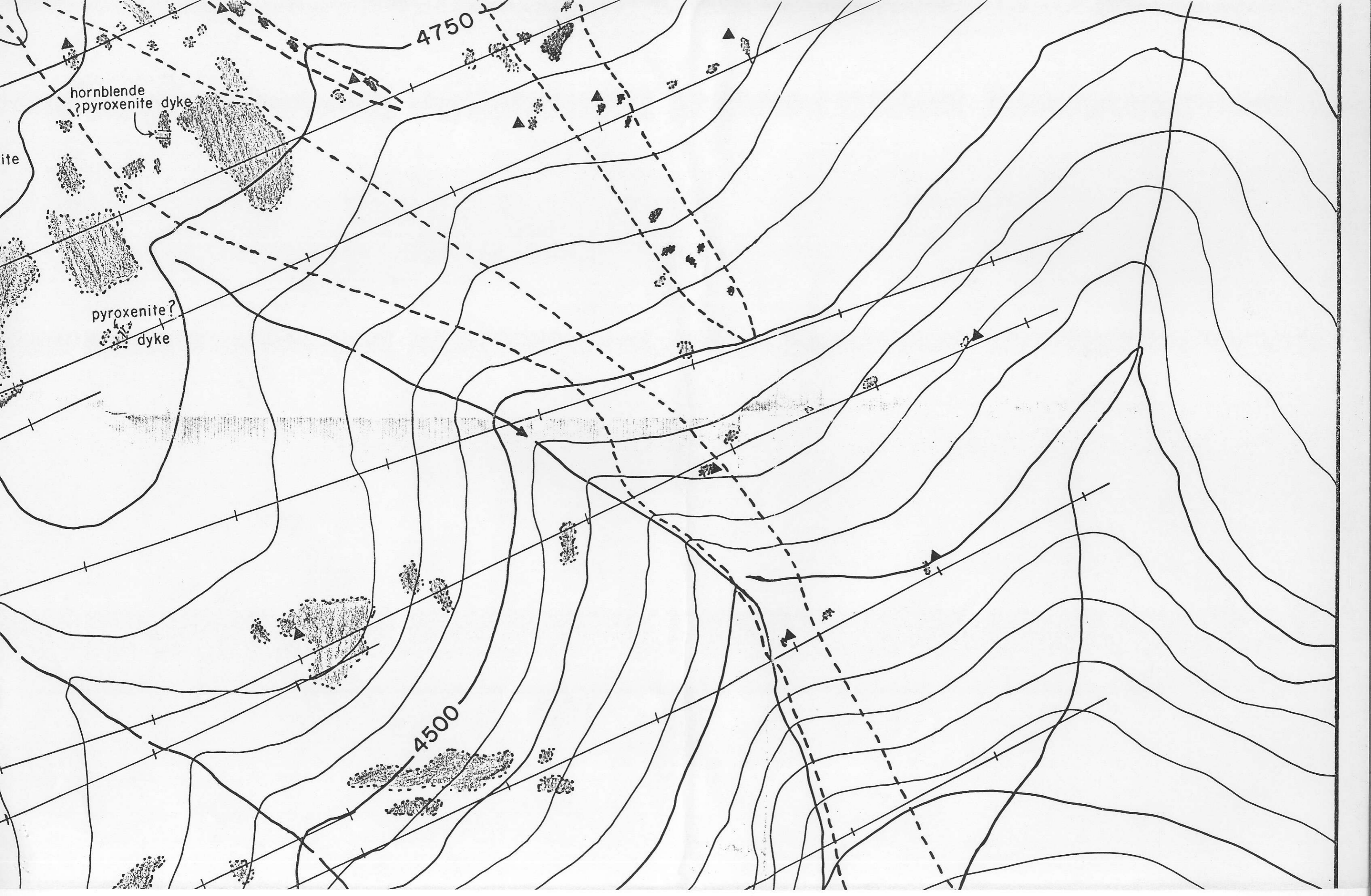
3W

2W

3750

4000





4750

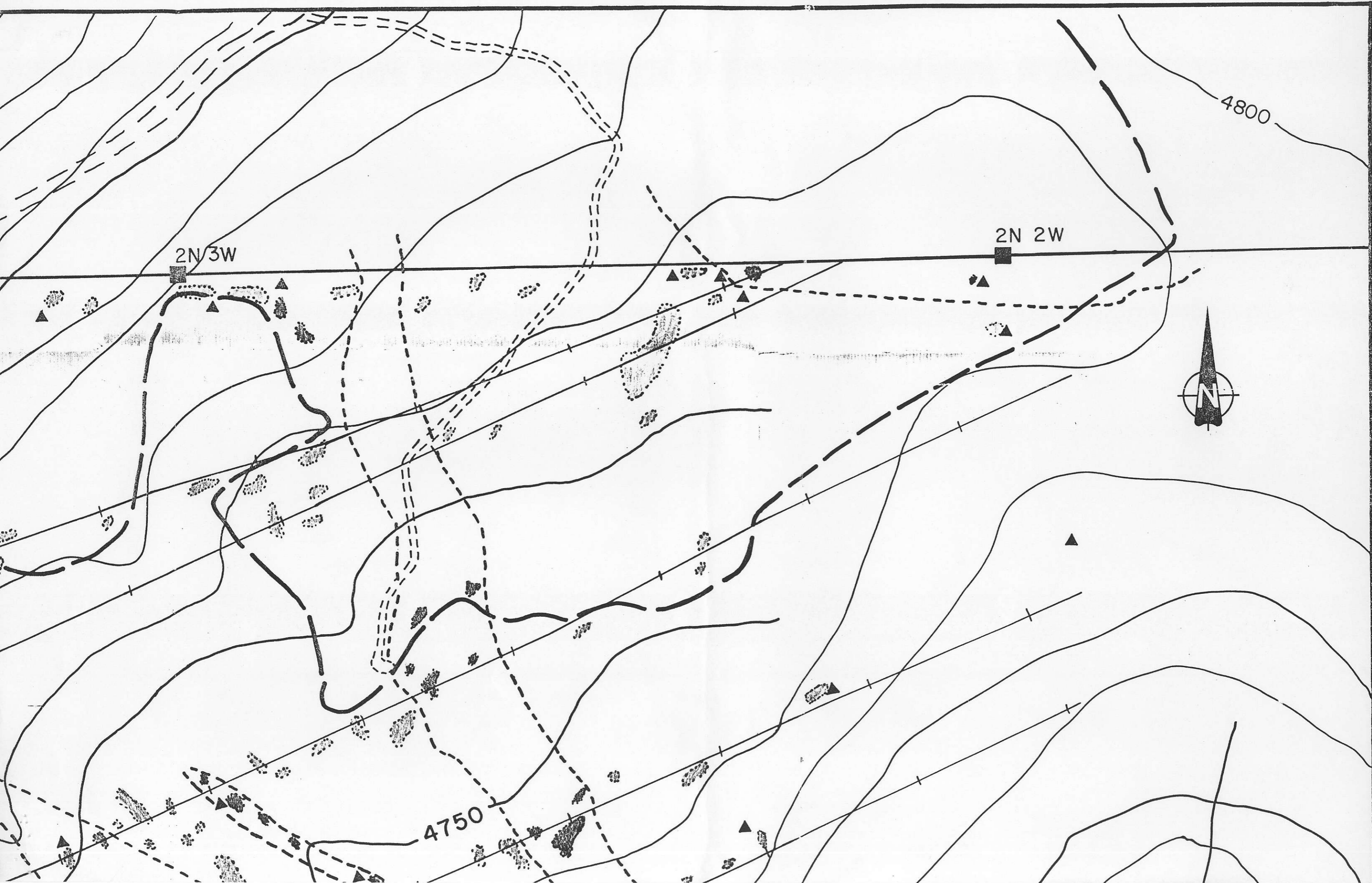
hornblende  
? pyroxenite dyke

pyroxenite?  
dyke

ite

4500





2N/3W

2N 2W

4800

4750

