

4250

1S

520622

UM

92H/10W

GRASSHOPPER I

(1803)

2S

4000

4100

3S

3750

4S

5S

5W 2S

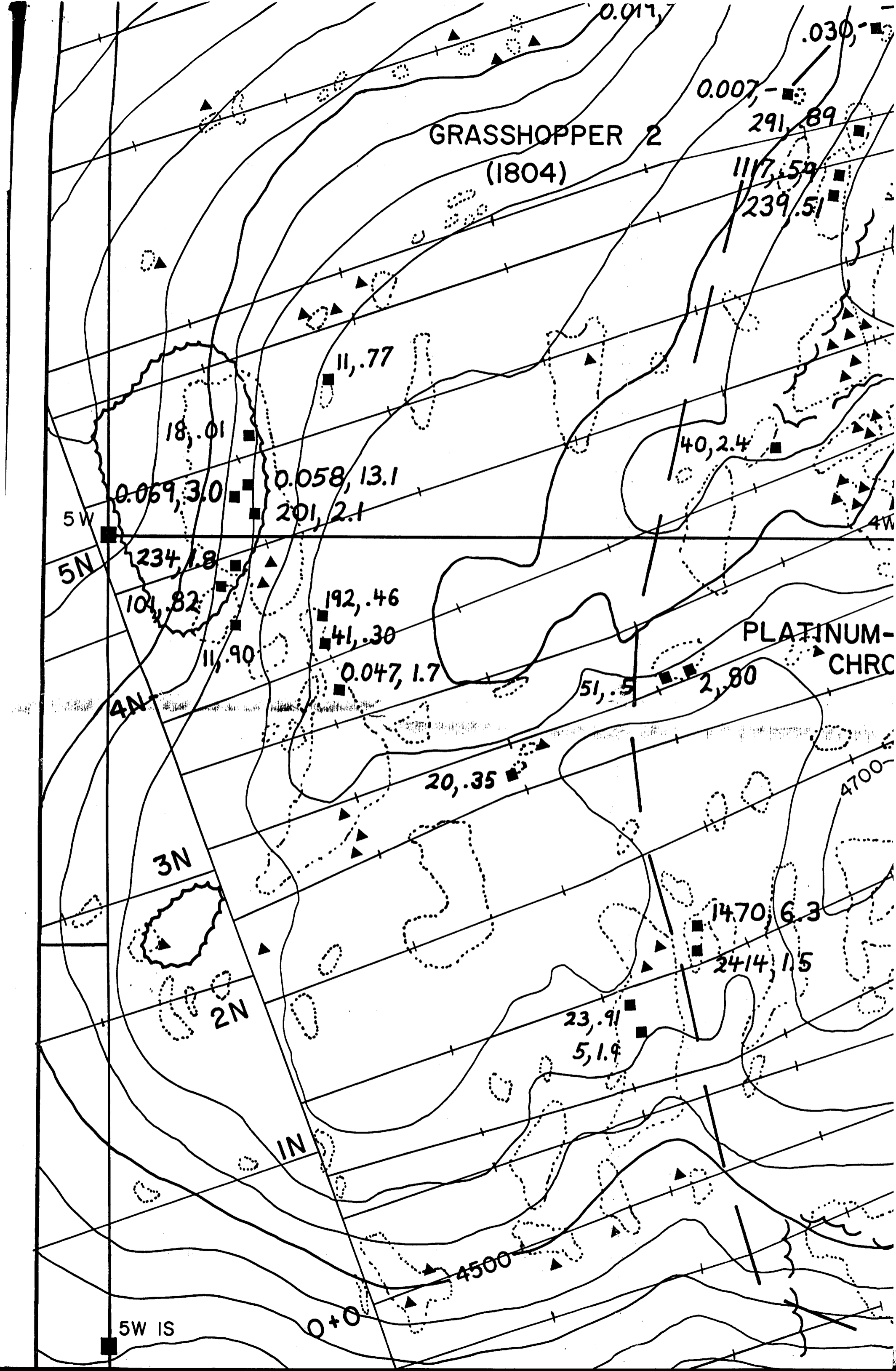
3550

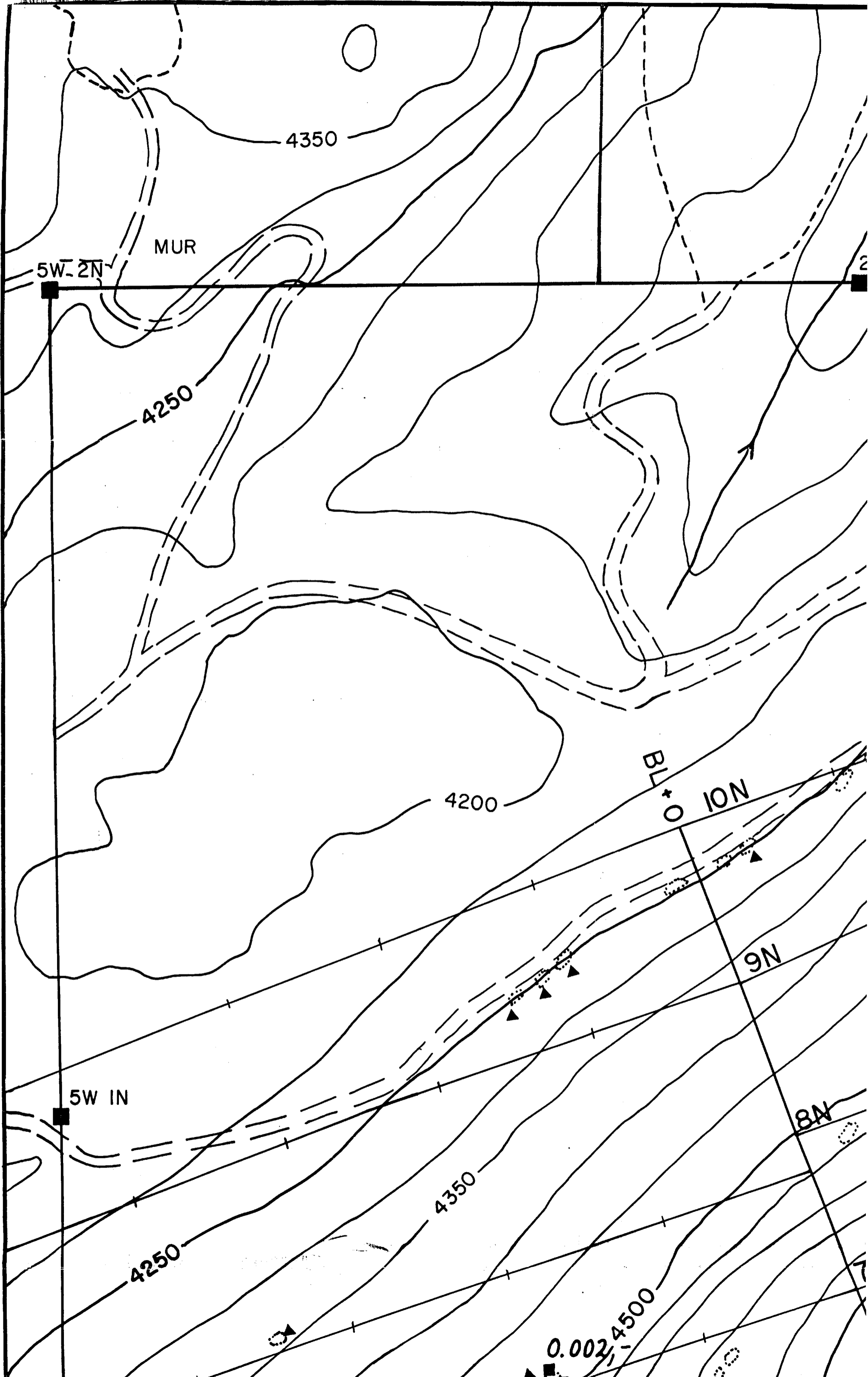
BL + 600 W

3500

BRITTON CREEK

3250





4350

MUR

5W 2N

4250

4200

BL + O ION

9N

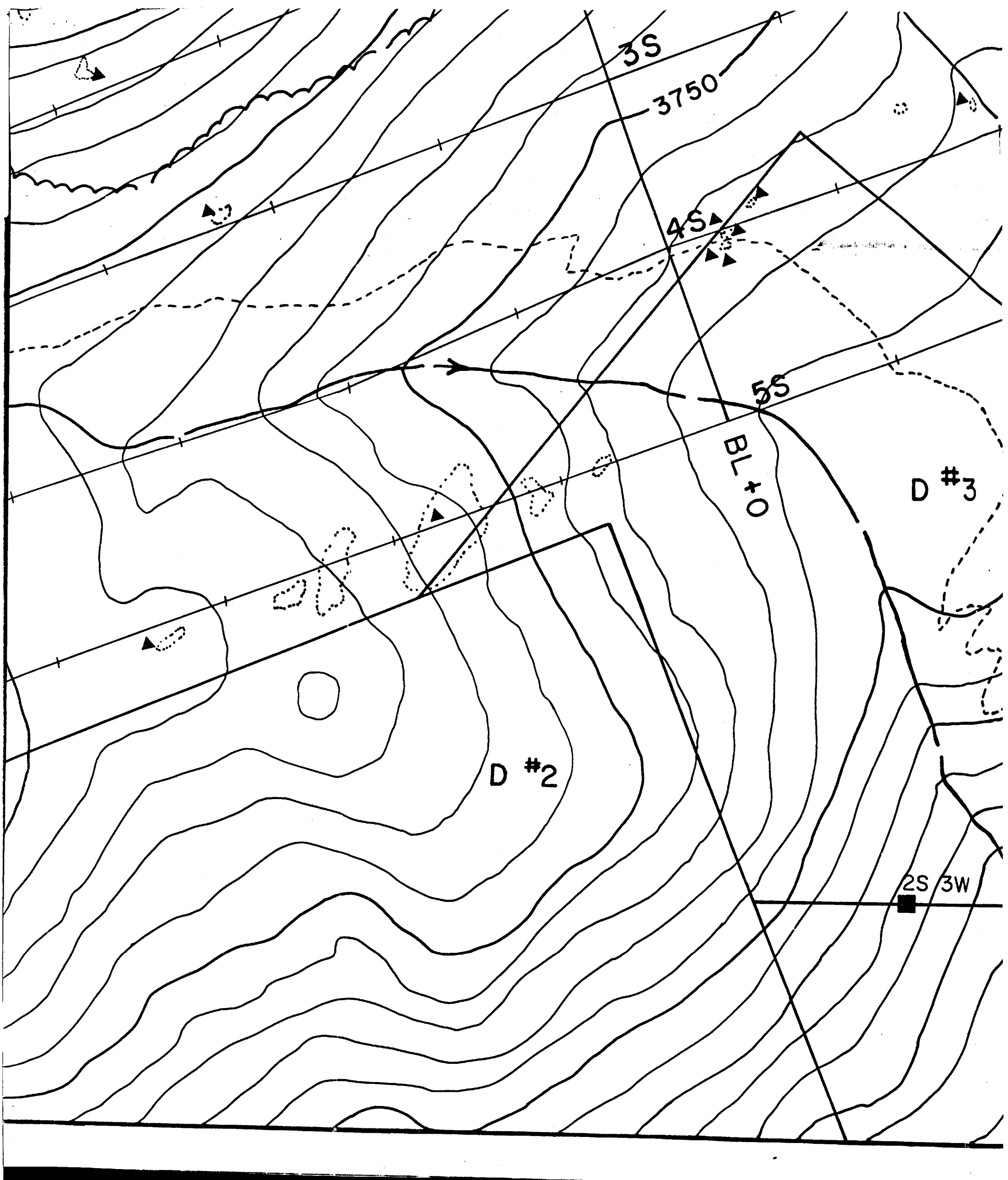
5W 1N

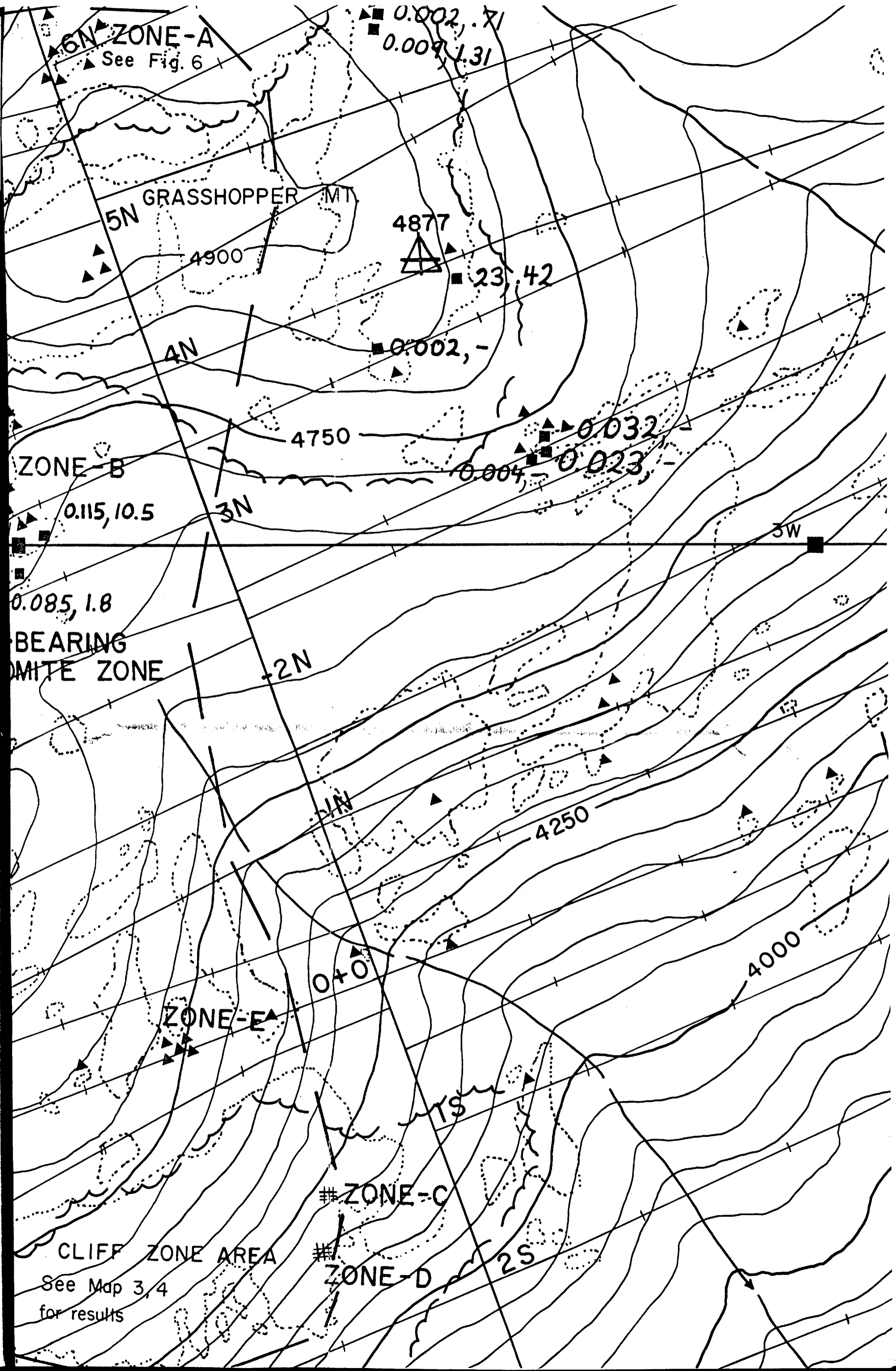
8N

4250

4350

0.002, 4500





6N ZONE-A
See Fig. 6

0.002, .71
0.009, 1.31

5N GRASSHOPPER (MT)

4877

4900

23, 42

4N

0.002, -

4750

0.032

ZONE-B

0.115, 10.5

3N

0.004, - 0.023, -

3W

0.085, 1.8

BEARING
MITE ZONE

2N

1N

4250

ZONE-E

0+0

4000

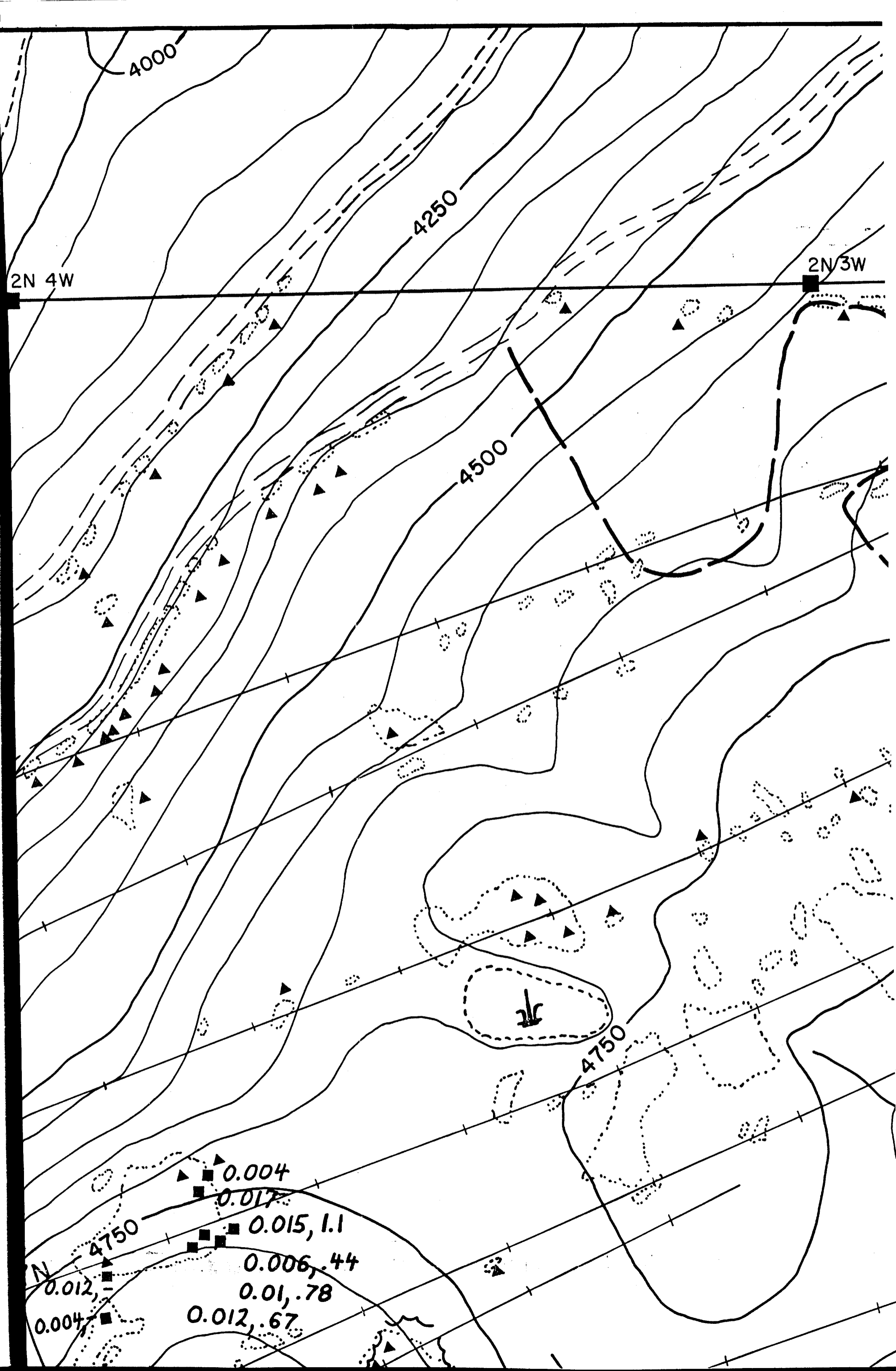
CLIFF ZONE AREA

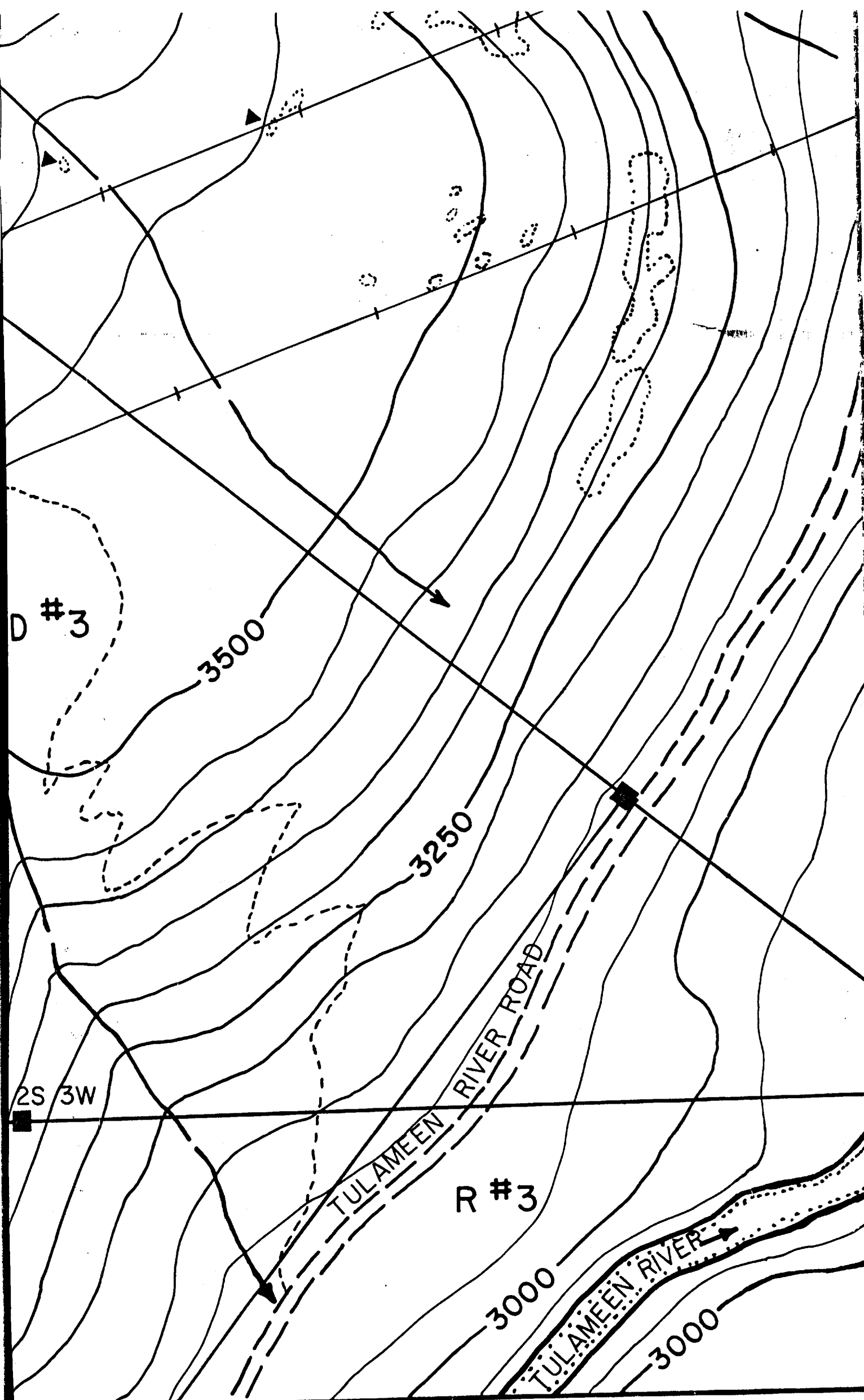
ZONE-C

ZONE-D

2S

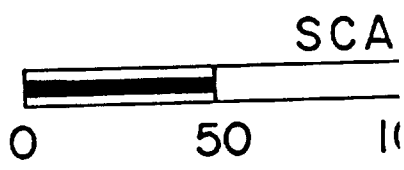
See Map 3, 4
for results





- 0.002, - denotes elevation
- rock chip sample
- ▲ rock sample location (see 1987 report)
- ⋯ outcrop
- ~ open, exposed
- ⊕ survey control
- ⊥ wet or marsh
- ↘ intermittent trail
- - - trail
- - - logging road
- | L 2N grid line (marked)
- 3W claim boundary
- 3550 contour line

grid lines surveyed in the field

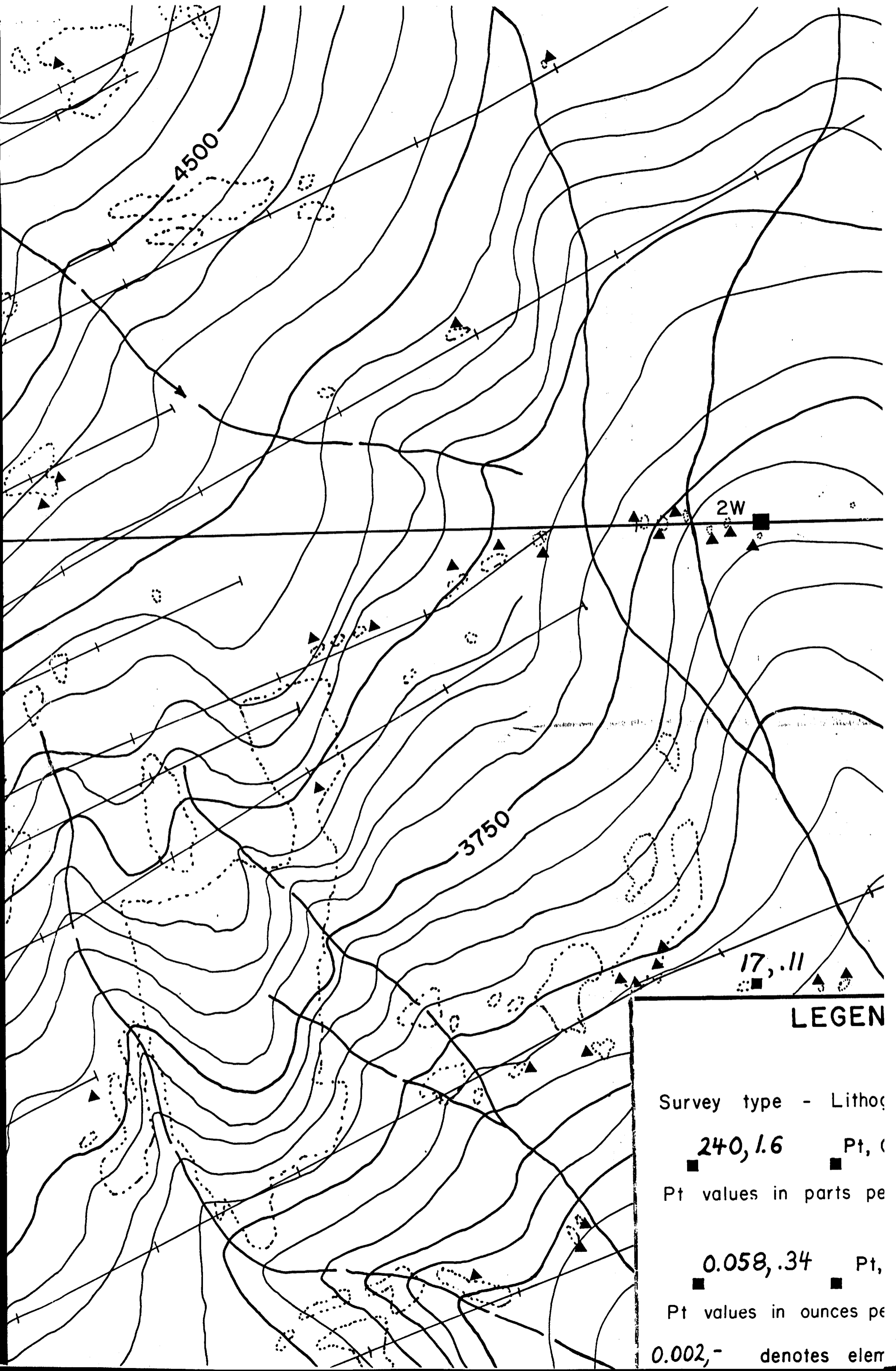


NEWMONT EXPLORATION

UM PROJECT
GEOCHEMISTRY

SIMILKAMEEN MINE

SCALE: 1:2000	LOCATION: NTS
SURVEY BY: D.B.	DRAWN BY:



LEGEN

Survey type - Litho

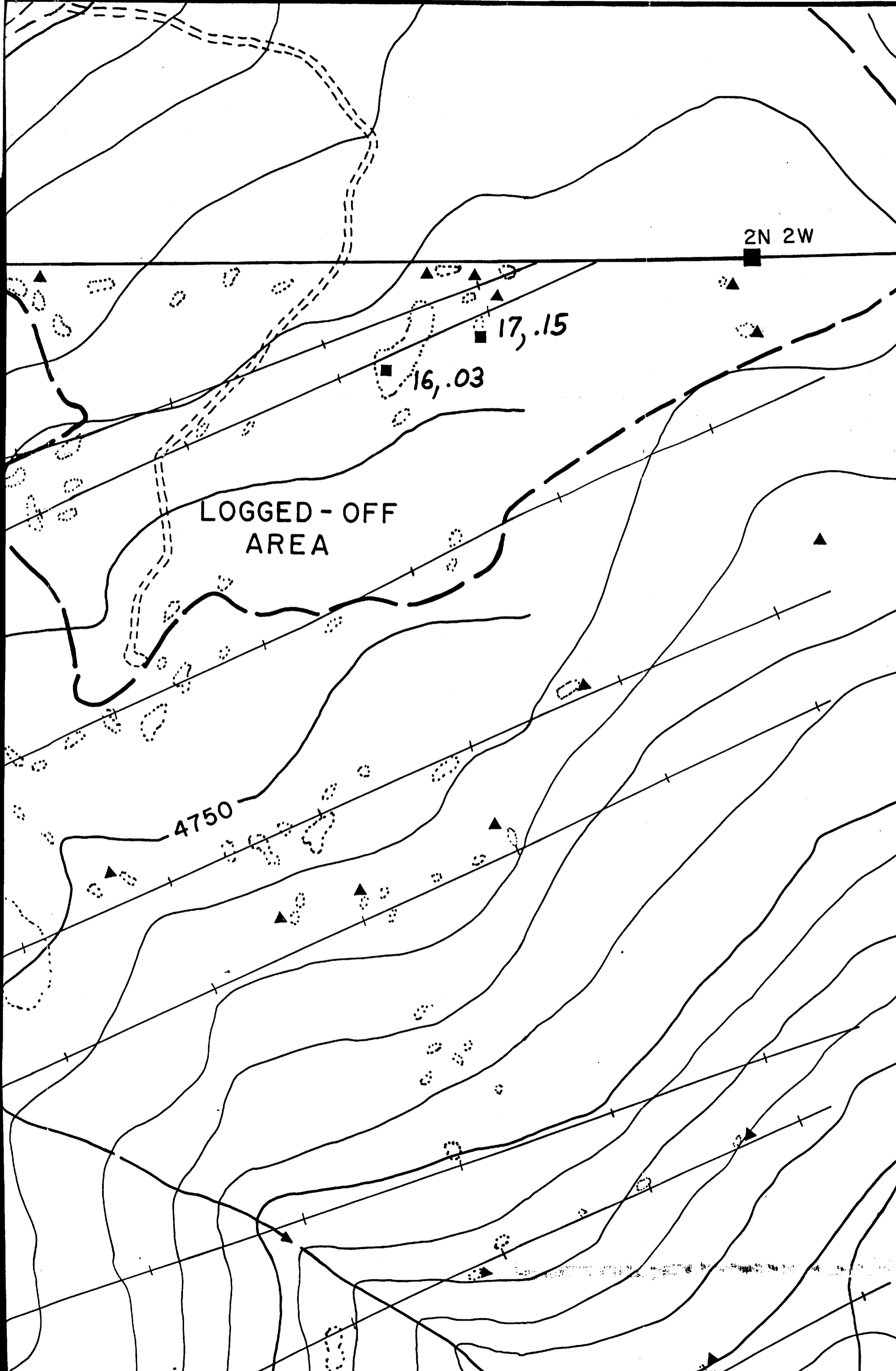
■ 240, 1.6 Pt, (

Pt values in parts pe

■ 0.058, .34 Pt,

Pt values in ounces pe

0.002, - denotes elem



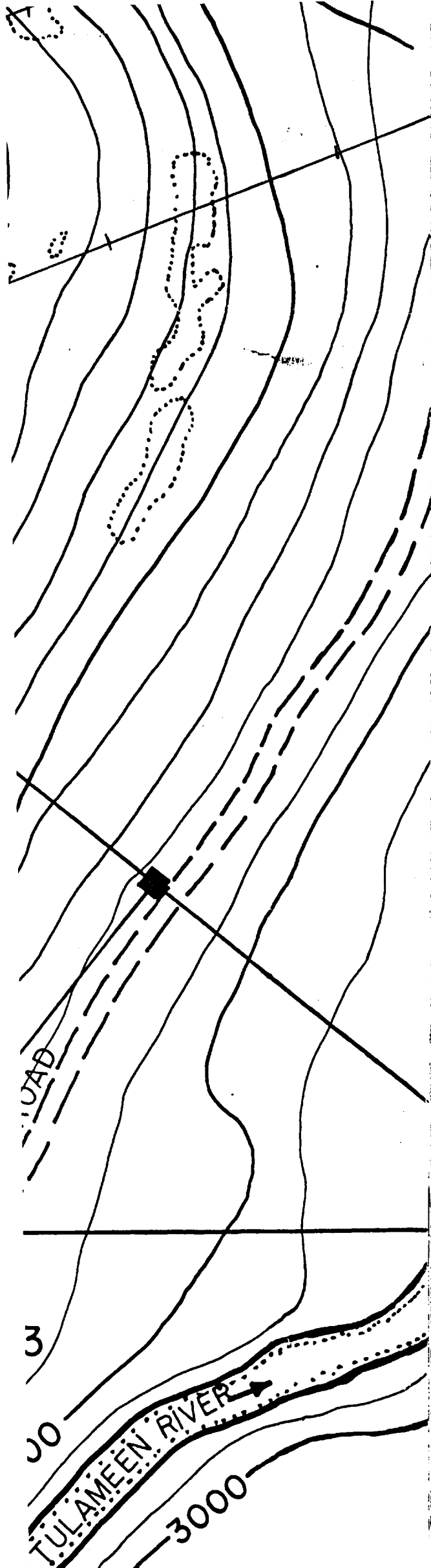
2N 2W

17,.15

16,.03

LOGGED - OFF
AREA

4750



0.002, -

-
- ▲
- ⋯
- ~
- △
- ⊥
-
- - -
- - -
- | L2N
- 3W
- 3550

denotes element not analyzed for
 rock chip sample location with results

rock sample location from last year
 (see 1987 report for results)

outcrop

open, exposed area outlined

survey control point

wet or marshy area

intermittent creek gully

trail

logging road

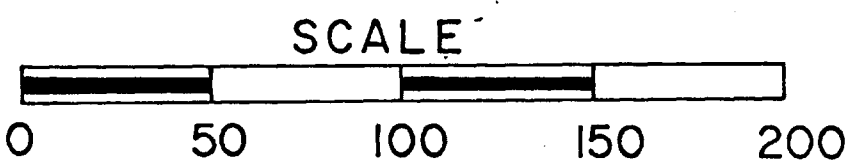
grid line (marked off in 100m intervals)

claim boundary (no posts were placed)

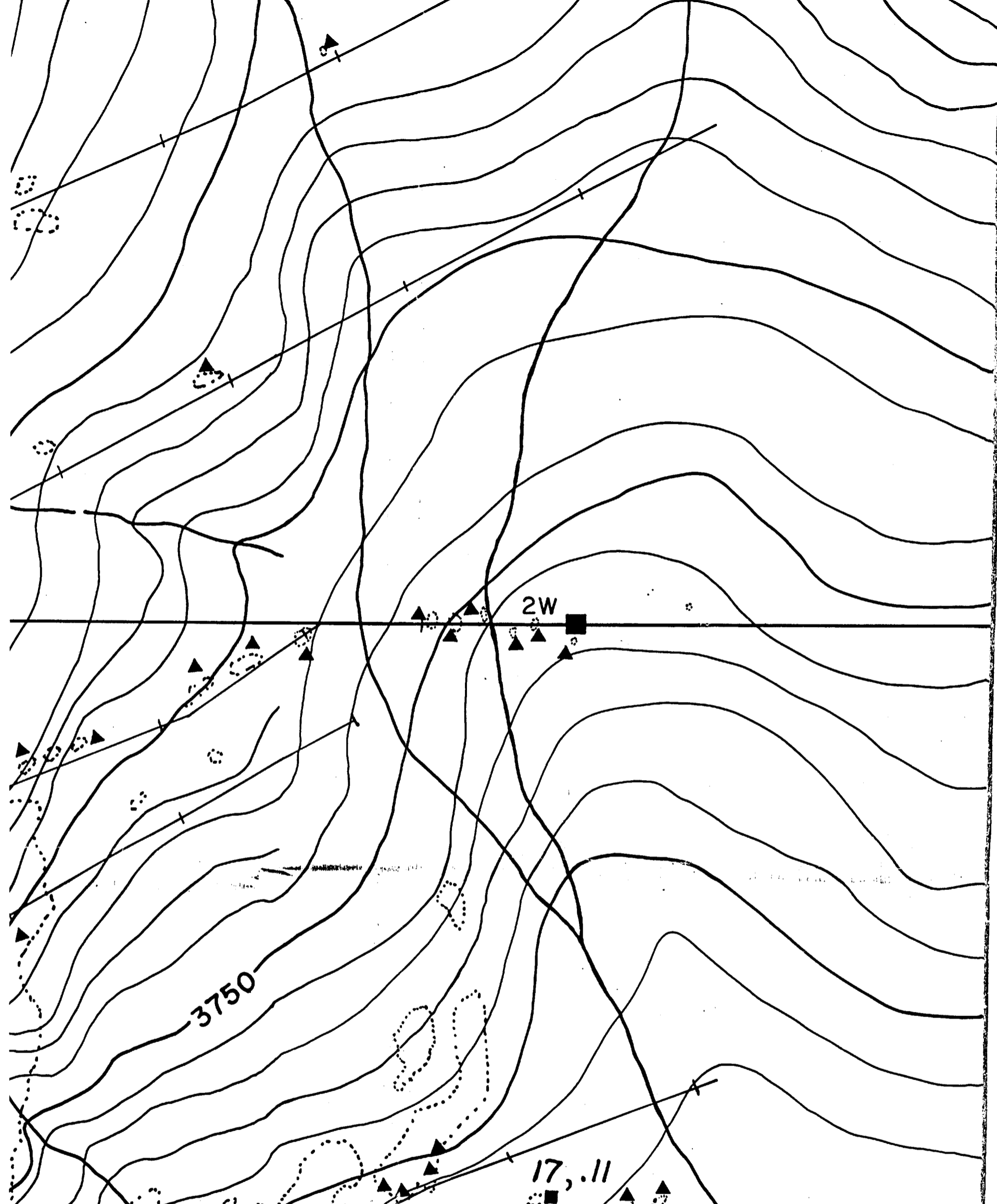
contour line (50ft. intervals)

grid lines surveyed in by chain and compass

MAP 2



NEWMONT EXPLORATION OF CANADA LIMITED		
UM PROJECT GEOCHEMISTRY Pt, Cr		
SIMILKAMEEN MINING DIVISION		
SCALE: 1:2000	LOCATION: NTS 92H/10W	DATE: JAN. 25, 1988
SURVEY BY: D.B.	DRAWN BY: D.B.	NUMBER: MAP 2



LEGEND

Survey type - Litho geochemistry

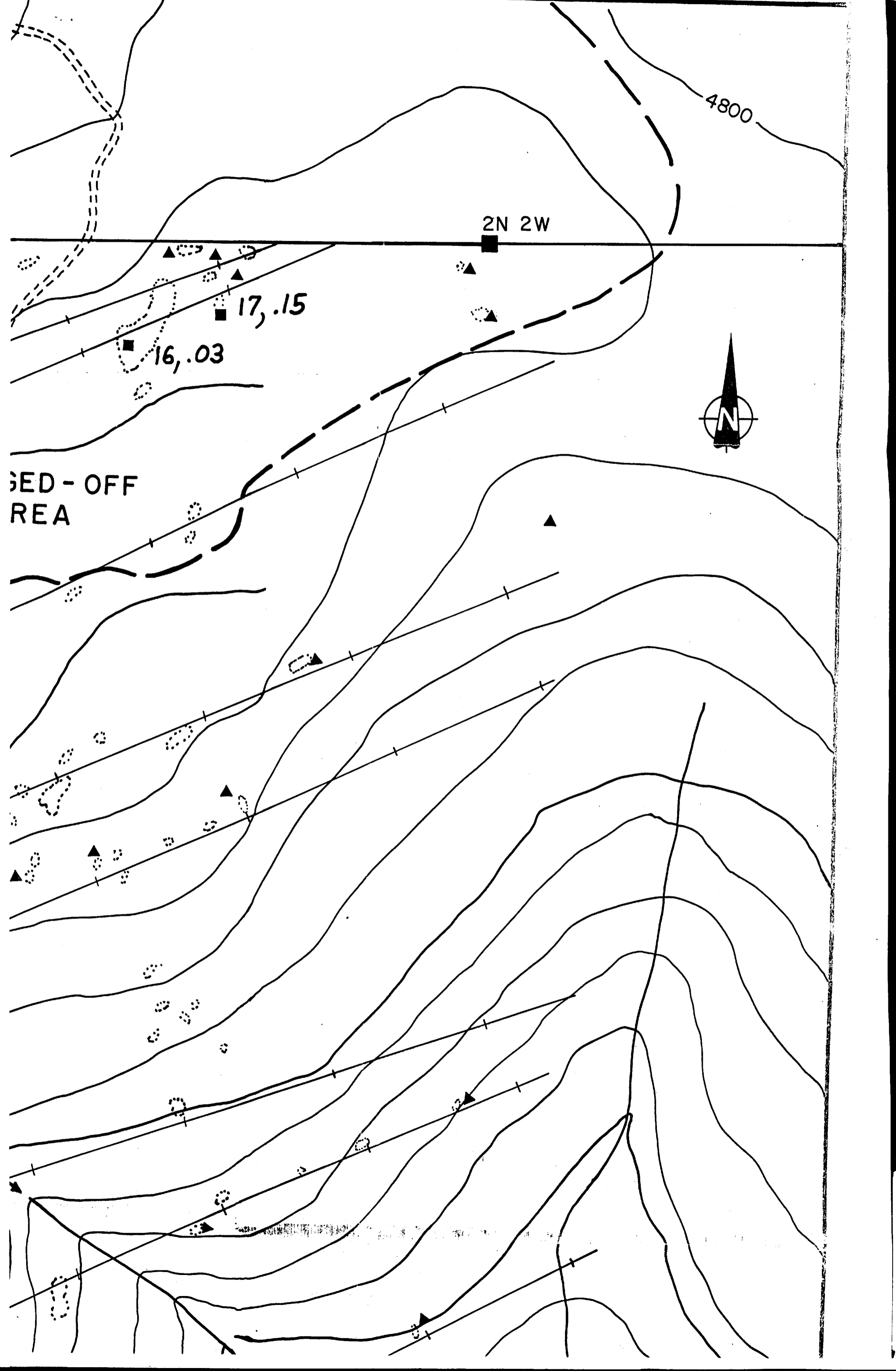
■ 240, 1.6 ■ Pt, Cr (ppb, %)

Pt values in parts per billion, Cr in percent

■ 0.058, .34 ■ Pt, Cr (oz/ton, %)

Pt values in ounces per ton, Cr in percent

0.002, - denotes element not analyzed for



4800

2N 2W

17,.15

16,.03

BED - OFF
REA

