

DRILL TRACE

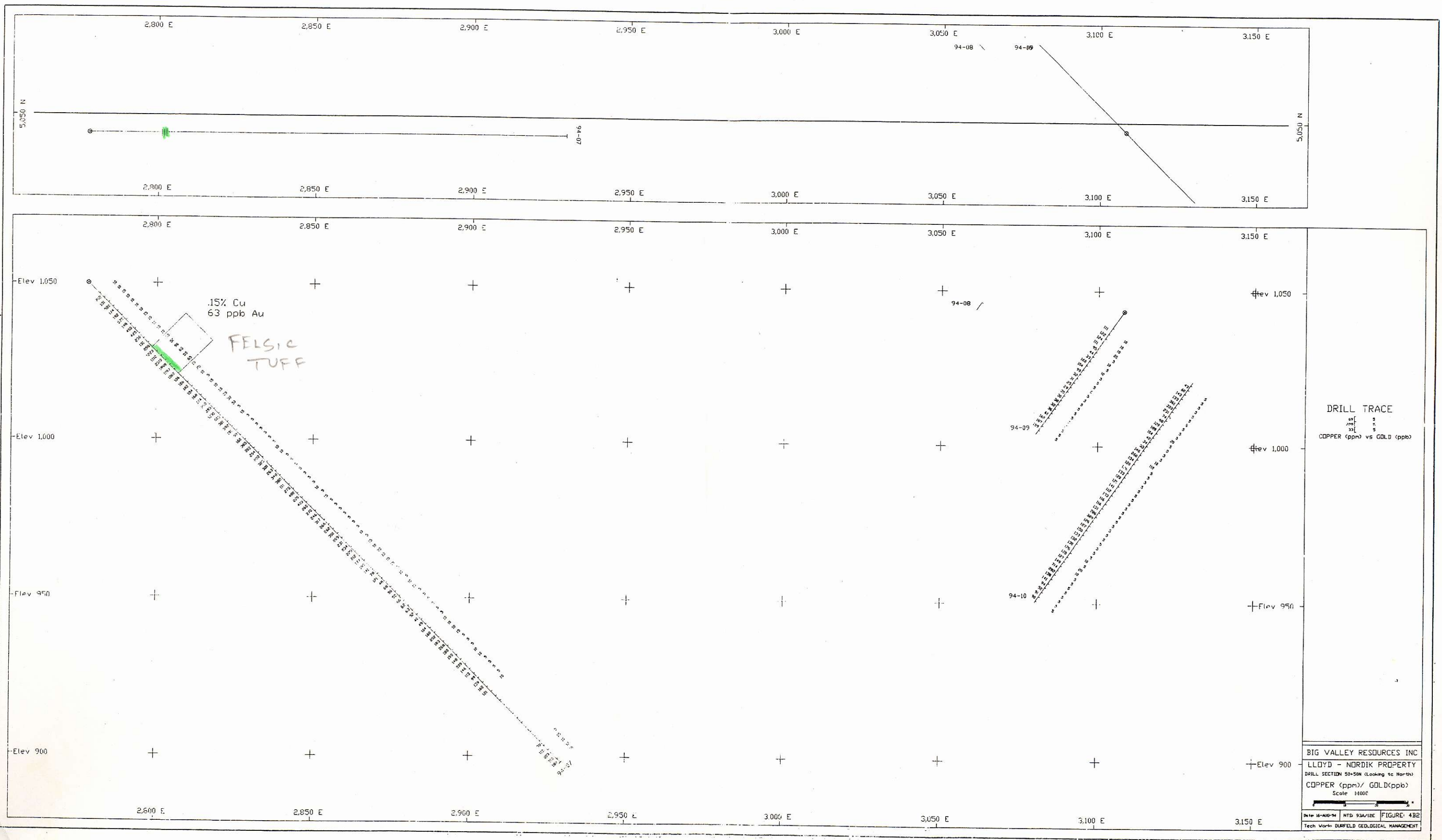
49	5
20	5
33	5

COPPER (ppm) vs GOLD (ppb)

BIG VALLEY RESOURCES INC
 LLOYD - NORDIK PROPERTY
 DRILL SECTION 50+00N (Looking to North)
 COPPER (ppm)/ GOLD (ppb)
 Scale 1:1000

Date: 16-AUG-94 NTS: 93A/12E FIGURE: 4B1
 Tech Work: DURFELD GEOLOGICAL MANAGEMENT

520550



.15% Cu
63 ppb Au

FELSIC
TUFF

DRILL TRACE

COPPER (ppm) vs GOLD (ppb)

BIG VALLEY RESOURCES INC

LLOYD - NORDIK PROPERTY

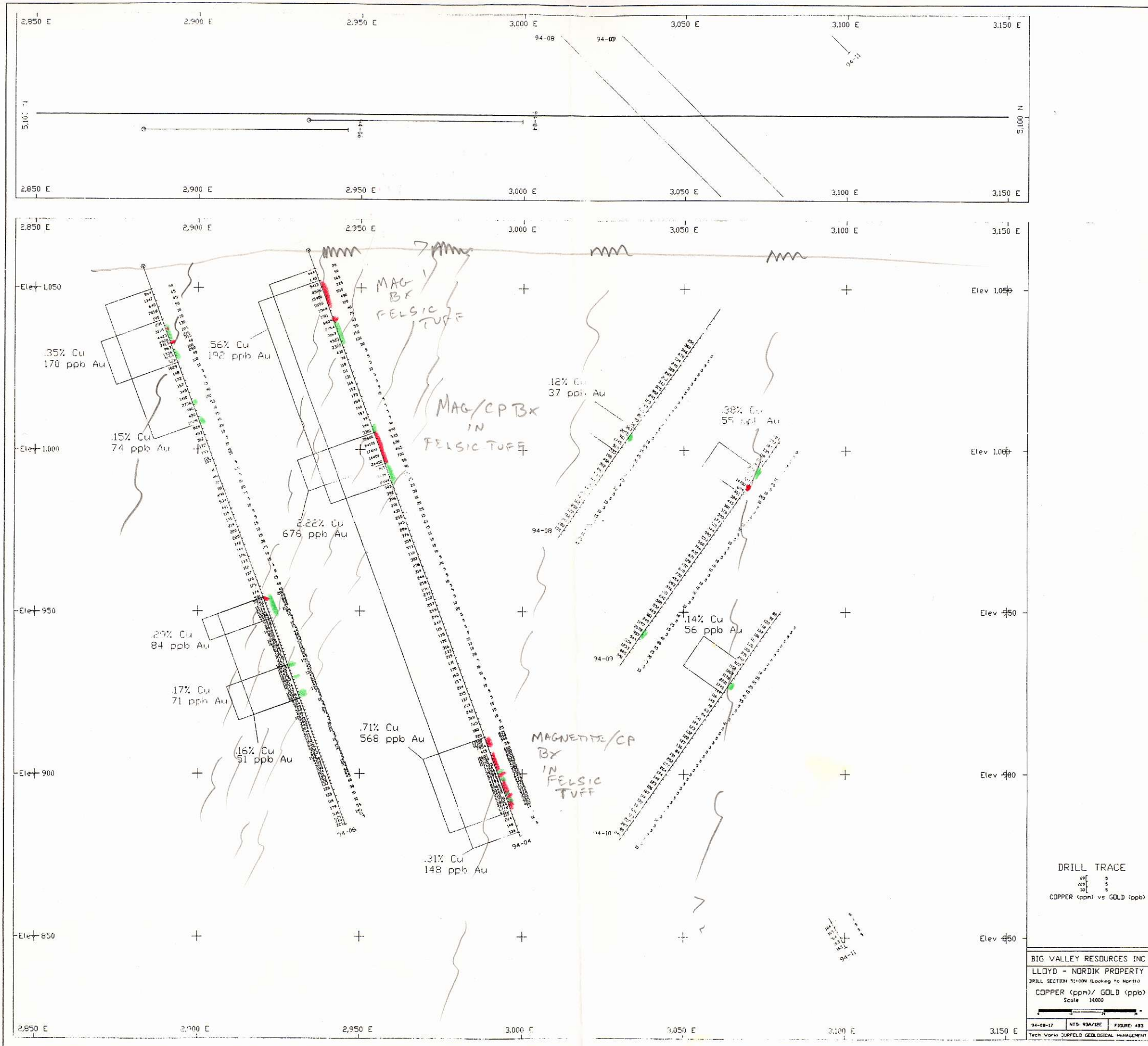
DRILL SECTION 50+50N (Looking to North)

COPPER (ppm) / GOLD (ppb)

Scale 1:1000

Date: 11-10-94 NTS: 93A/12E FIGURE: 4B2

Tech Work: DUFFIELD GEOLOGICAL MANAGEMENT

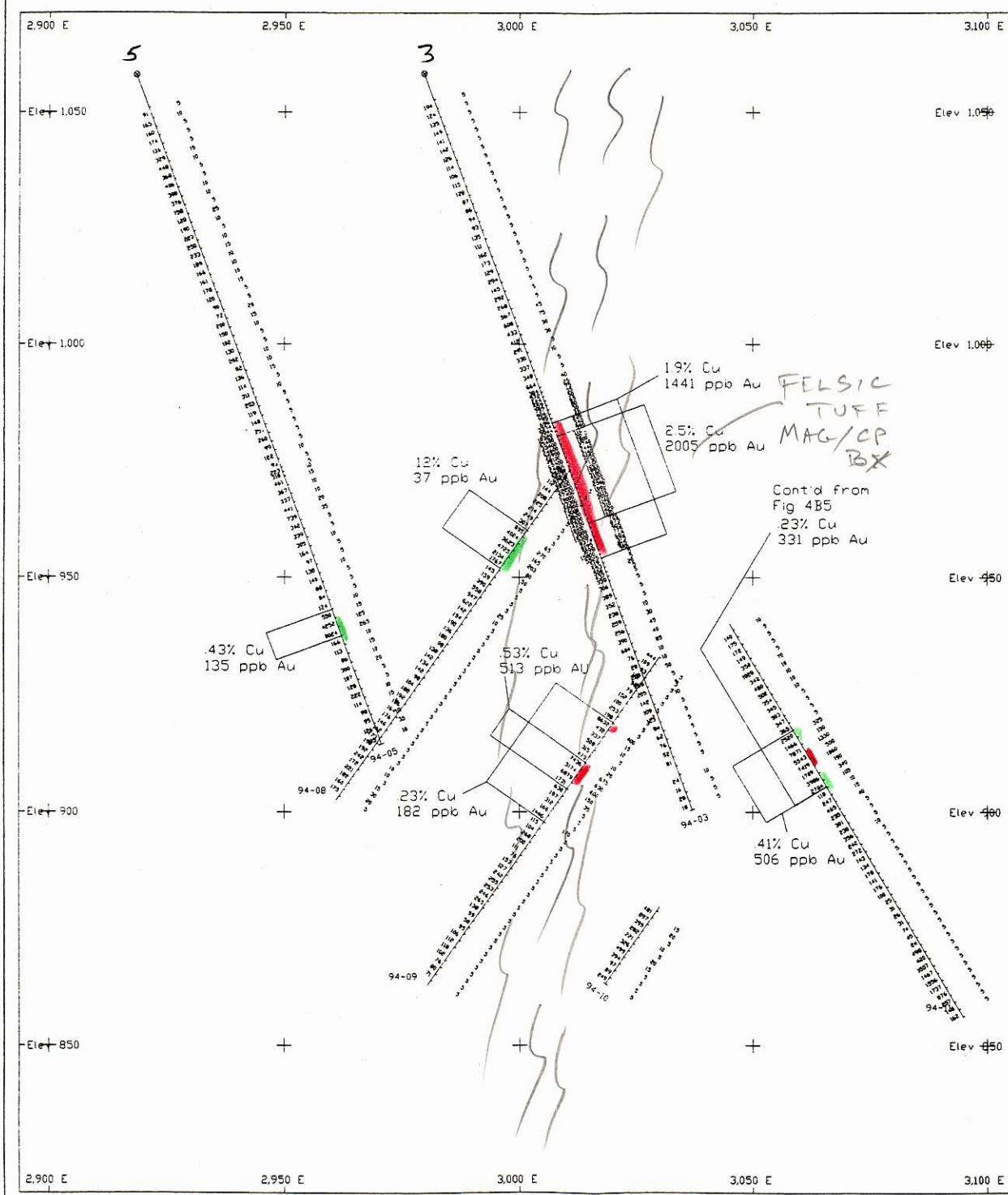
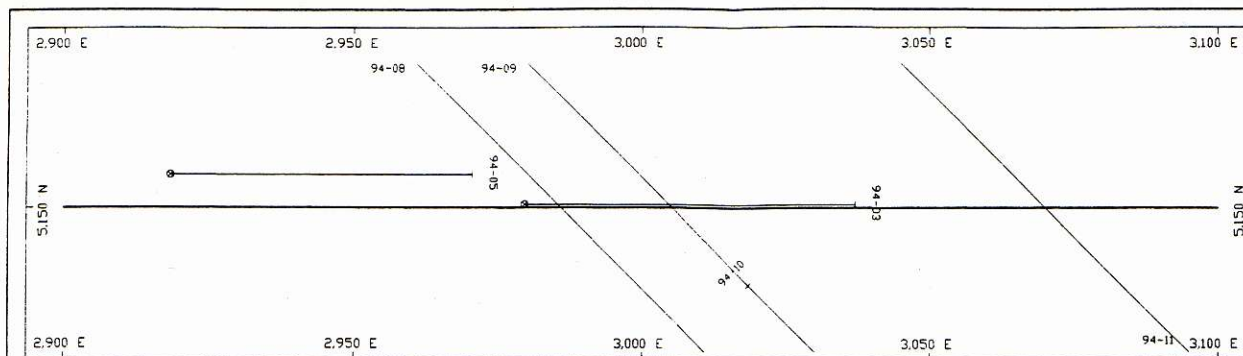


Cu %
 ——— ≥ 0.2% ≤ 0.5
 ——— ≥ 0.5

DRILL TRACE
 49' 3"
 29' 3"
 21' 3"
 COPPER (ppm) vs GOLD (ppb)

BIG VALLEY RESOURCES INC
 LLOYD - NORDIK PROPERTY
 DRILL SECTION 11-00N (Looking to North)
 COPPER (ppm)/ GOLD (ppb)
 Scale 1:4000

94-08-17 NTS 93A/12E FIGURE 483
 Tech Work SURFELD GEOLOGICAL MANAGEMENT



Cu %

— ≥ 0.2 < 0.5

— ≥ 0.5

BIG VALLEY RESOURCES INC

LLOYD - NORDIK PROPERTY

DRILL SECTION 51-50N (Looking to North)

COPPER (ppm)/GOLD (ppb)

Scale 1:1000

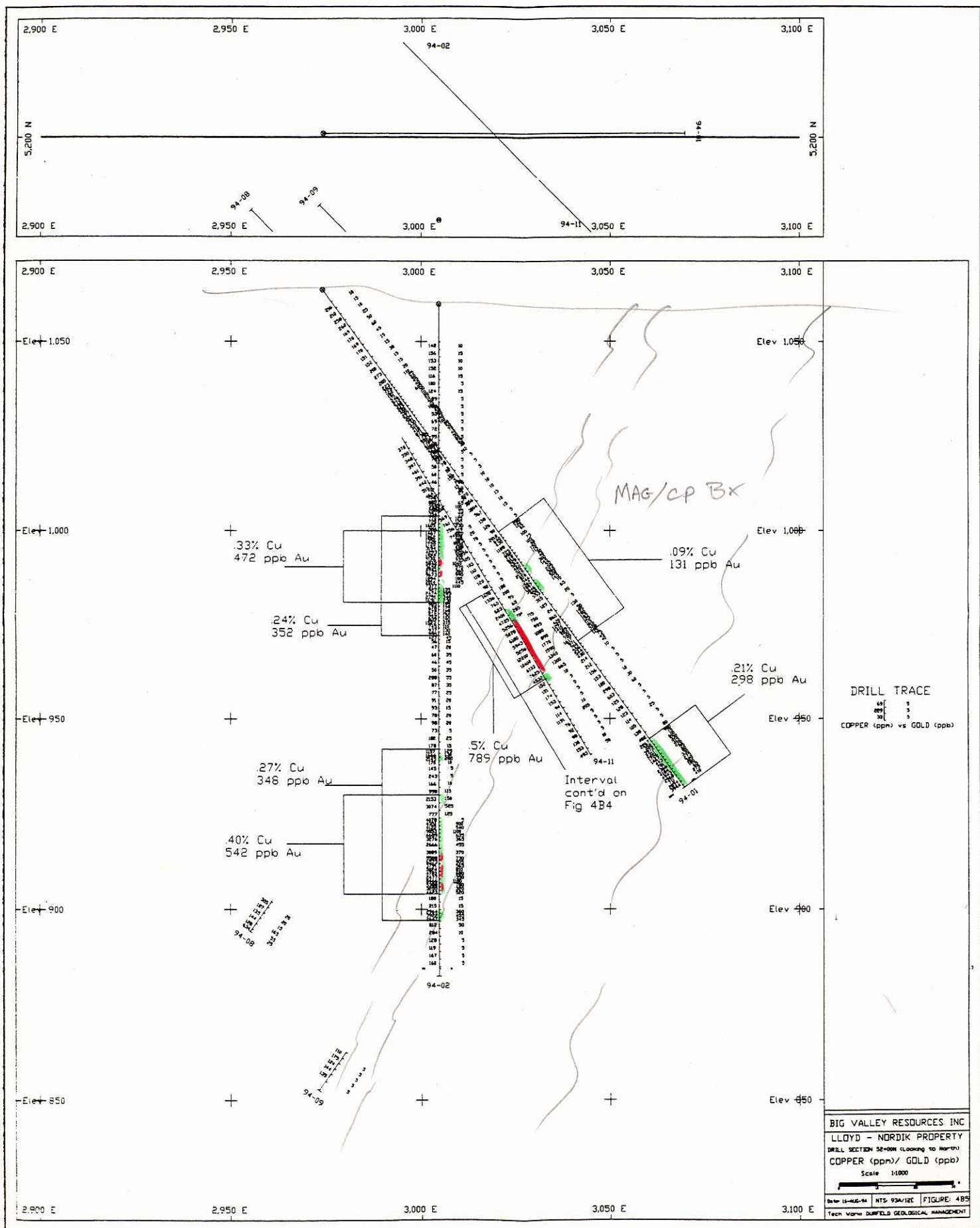
Date: 10-05-94 MTS: 934/12E FIGURE: 484

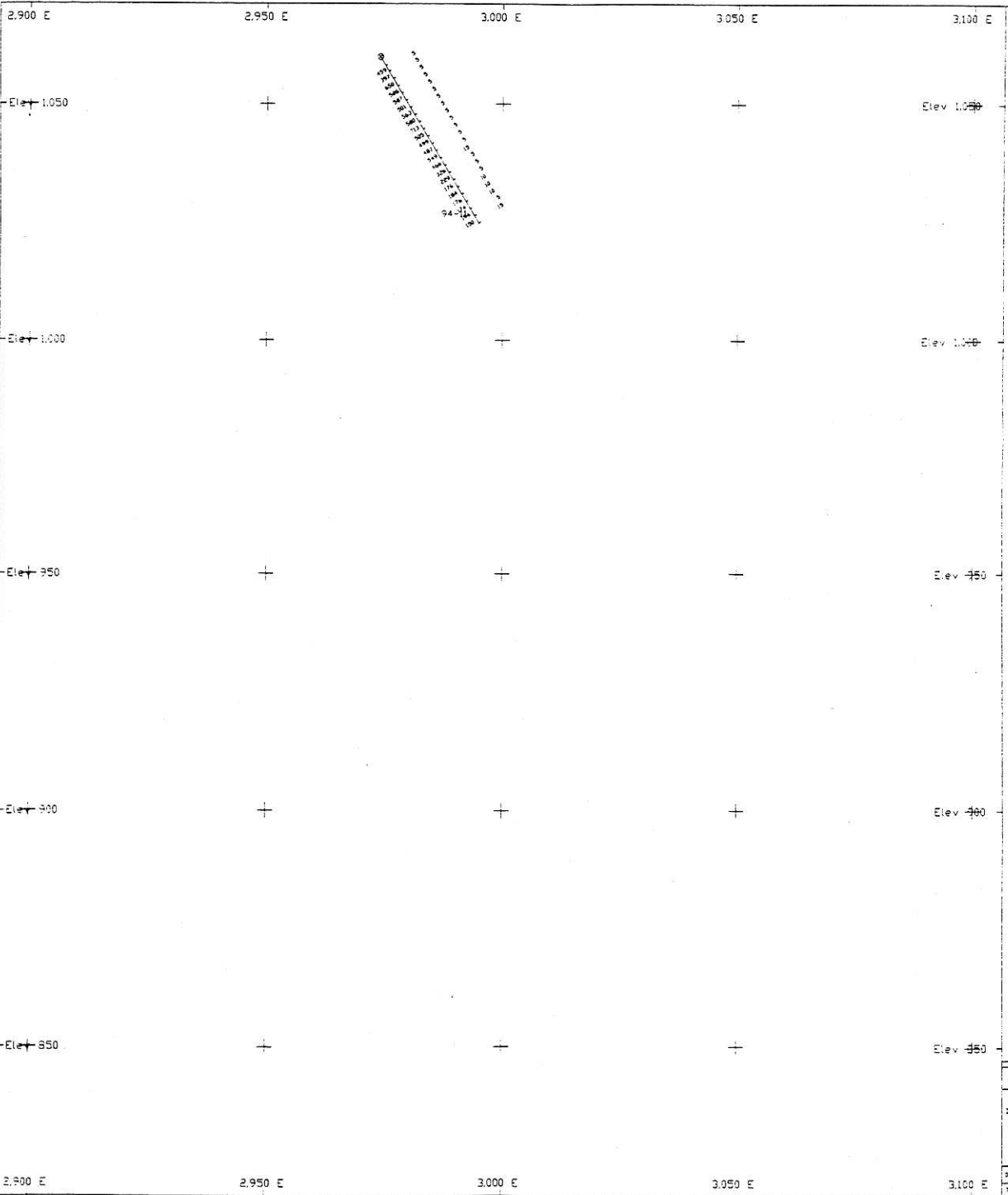
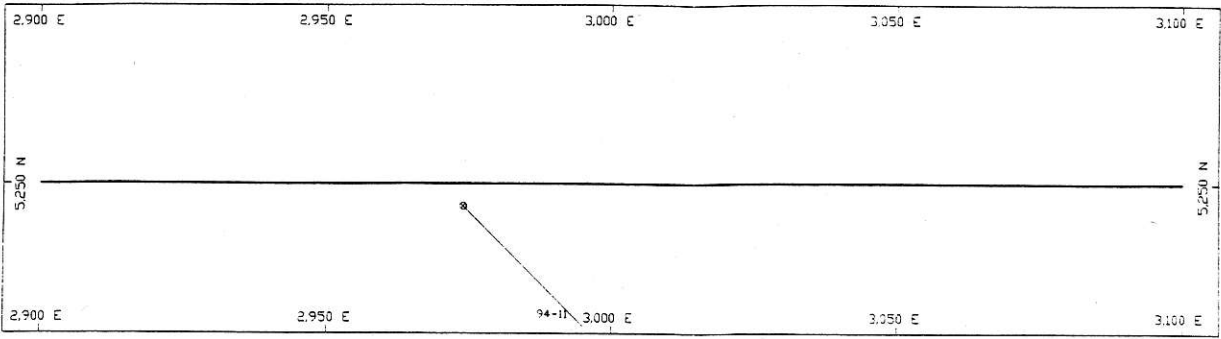
Tech Work: DUFFIELD GEOLOGICAL MANAGEMENT

Cu %

$\geq 0.2 < 0.5$

≥ 0.5





DRILL TRACE

wt	5
cm	5
di	5

COPPER (ppm) vs GOLD (ppb)

BIG VALLEY RESOURCES INC
 LLOYD - NORDIK PROPERTY
 DRILL SECTION 52-50N (looking to North)
 COPPER (ppm) / GOLD (ppb)
 Scale 1:1000

Drawn by: M. G. H. LTD 12/12E FIGURE 4861
 Tech. Work: DUFFIELD GEOLOGICAL MANAGEMENT