

SOIL GRID  
SPECIFICATIONS:

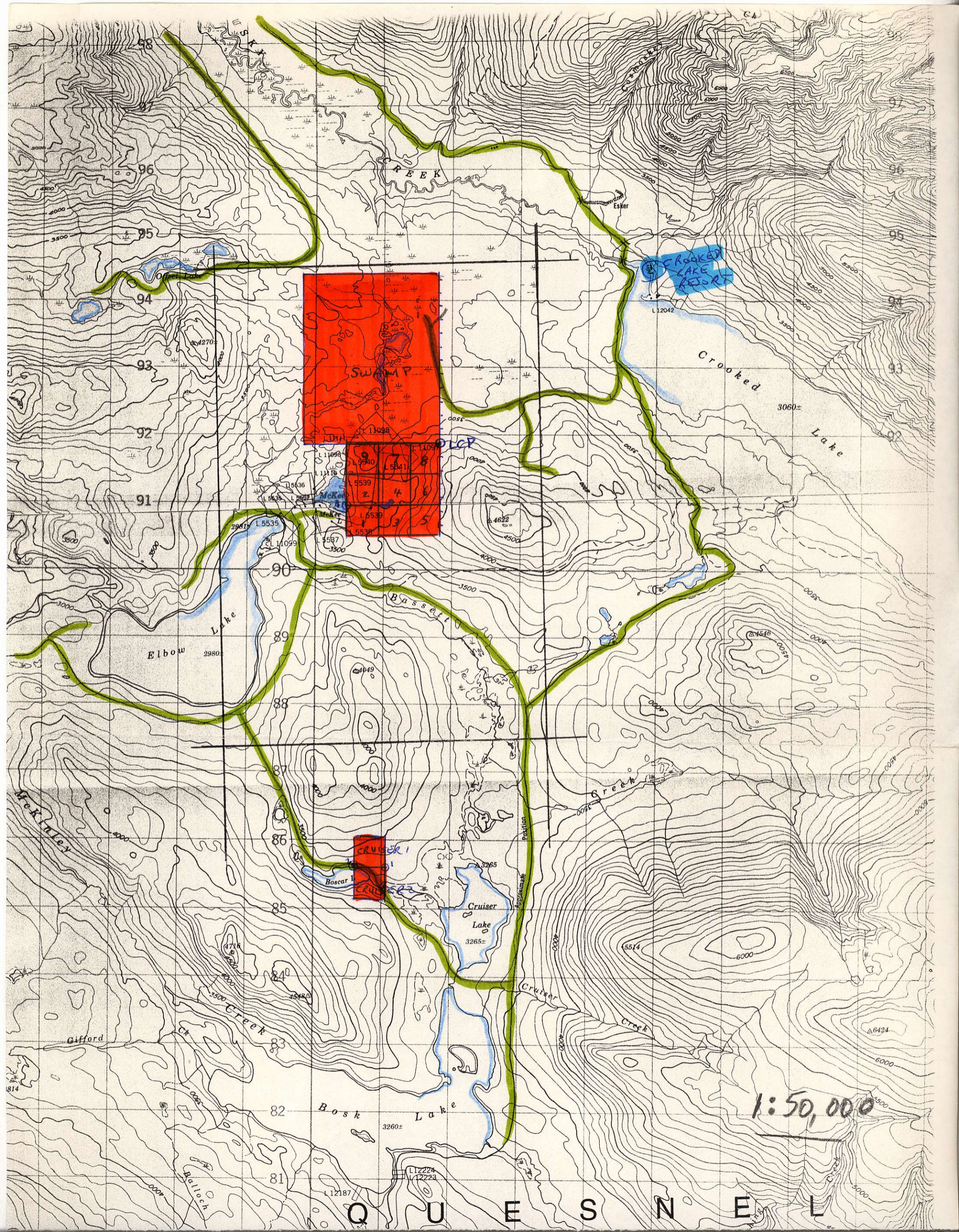
Oct. 25/83  
AJP. 520521  
93A/2+7

- (A) SWAMP (20)  
CG (9)  
29 units.
- vehicle access to 3 areas of grid
  - run  $\frac{1}{2}$  bd avail. @ Cooked Cr. Resort or Jacobson Bus. camp.
  - NS base line - along claim line - thru LCP
  - 3#00 m. - beazed, flagged, tight dained
  - 12 EW X-lines @ 2000 m = 24,000 m
  - 6 EW X-lines @ 1600 m = 9,600 m
  - 33,600 m.
  - X-lines 200 m. apart, beazed, flagged, topofil.
  - Soil samples @ 50 m. spacings
  - approx 675 soil samples.

- (B) CRUISER  $\frac{1}{2}$   
2 claims
- vehicle access
  - run 5 EW soil lines, 750' apart = 2500 m. grid.
  - Soil samples @ 50 m. spacings = 50 samples
  - lines to be beazed, flagged, topofil.

- Ship all samples to MIN-EN Labs, N. Van.
- mark for Au, As, Cu determinations.
- Charge to Mt. Calvary Resources Inc.

A. Schmidt



Swamp

1	2	3	4	5	6	7	8	9
---	---	---	---	---	---	---	---	---

Cruiser

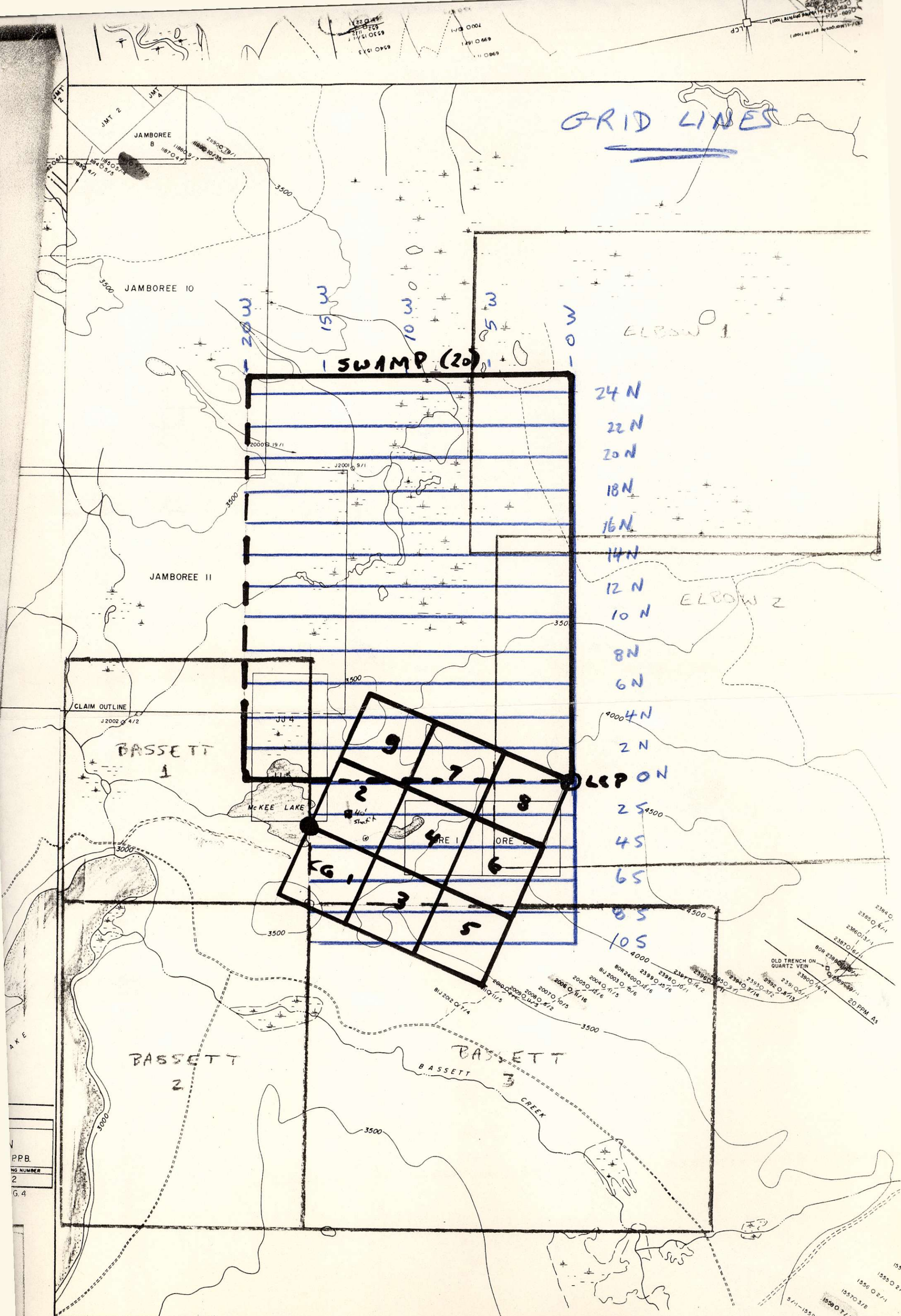
CROOKED LAKE RESORT

LCP

1:50,000

QUEBEC

GRID LINES



JAMBOREE B

JAMBOREE IO

JAMBOREE II

CLAIM OUTLINE  
J2002 4/2

BASSETT 1

BASSETT 2

BASSETT 3

SWAMP (20)

24 N  
22 N  
20 N  
18 N  
16 N  
14 N  
12 N  
10 N  
8 N  
6 N  
4 N  
2 N  
25 S  
4 S  
6 S  
8 S  
10 S

LCP ON

OLD TRENCH ON QUARTZ VEIN  
20 PPM AS

PPB  
NO NUMBER  
2  
G. 4

--- 10 PPb Au  
--- 40 PPb Au  
--- 20 PPM As

1:20,000

○ SOIL SAMPLE  
□ SILT SAMPLE  
△ ROCK CHIP SAMPLE

AM1215 06/-1  
SAMPLE No. ○ ARSENIC/GOLD  
-1 - M/118 NO. 2000

