

520386  
Fran Property  
93K/16

C O V E R

S H E E T

To:

Richard (250) 996-7050

Date:

COMMENTS:

Attached are our  
Sampling results of the  
Fran Property.

From the desk of...

Wayne J. Roberts

15th Floor, 675 West Hastings St.  
Vancouver, B.C. V6B 1N2

Business Telephone: 604 687 4651  
Fax: 604 687 4691

# FRAN PROPERTY

July 03, 1998

The Fran Property was visited on July 3, 98 by Brian Thurston & Brooke Roberts. On a tour by Richard Haslinger Sr. Several sites were visited. Most showings occur along shears or shear/Qtz veins within Feld-Hold Porphyry. This Intrusion may be a dyke or sill and at site #10 is at least 85m wide, and intrudes Argillic sed's.

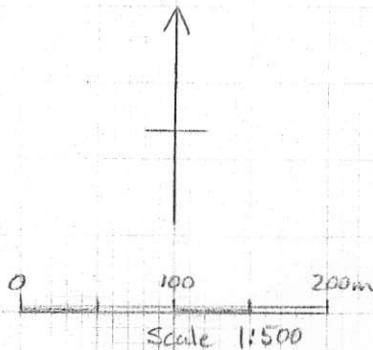
Samples were concentrated at Pit #4 & Site #10.

Pit #4 consisted of one Qtz vein ~ 0.3 → 0.5m wide in or along a pyritic (leached), gossanous shear striking ~ 100°-110° with a steep southerly dip ~ 80°. Py up to 5 or 8% locally in shear. Qtz is clear to milky w̄ up to 4% vugs w̄ drusy Qtz. Grey metallic mineral (calena?) occurs as pods and extremely fine diss's up to 5% in areas. Strong gossan along shear & in footwall → hanging wall.

Site #10 along main forestry Rd consisted of shears in the same Porphyry Intrusive which intersects Argillic Sediments. Several shears Avg. 0.2 → 0.5m & strike 100 → 126° w̄ vertical dips. Shears are often strong gossan & clayey gouge. Gossanous friable/fractured Porphyry up to 3m surrounding gouge zones. Porphyry adjacent to these shears is very fresh competent rock w̄ < 1% Py diss.

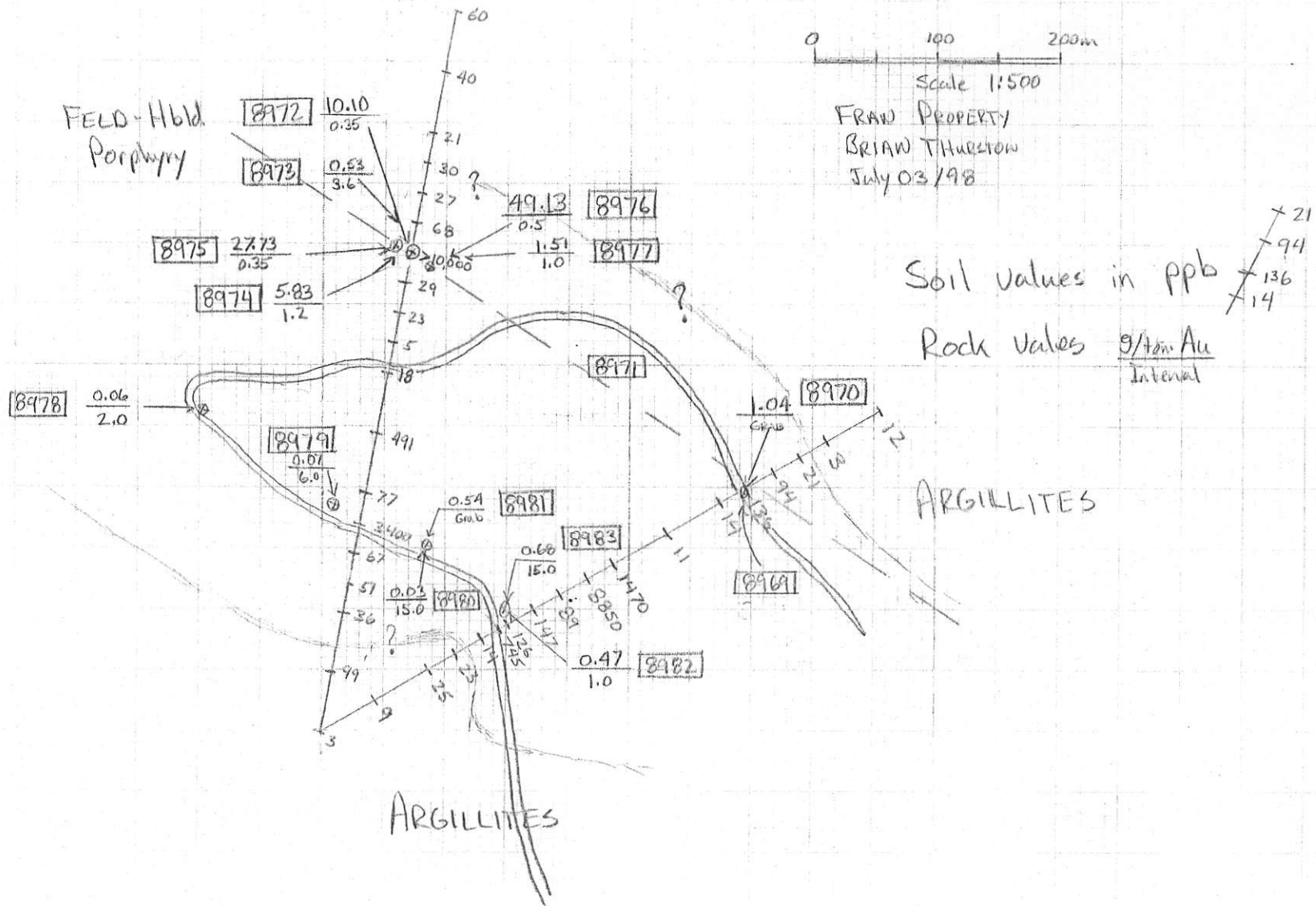
ARGILLITES

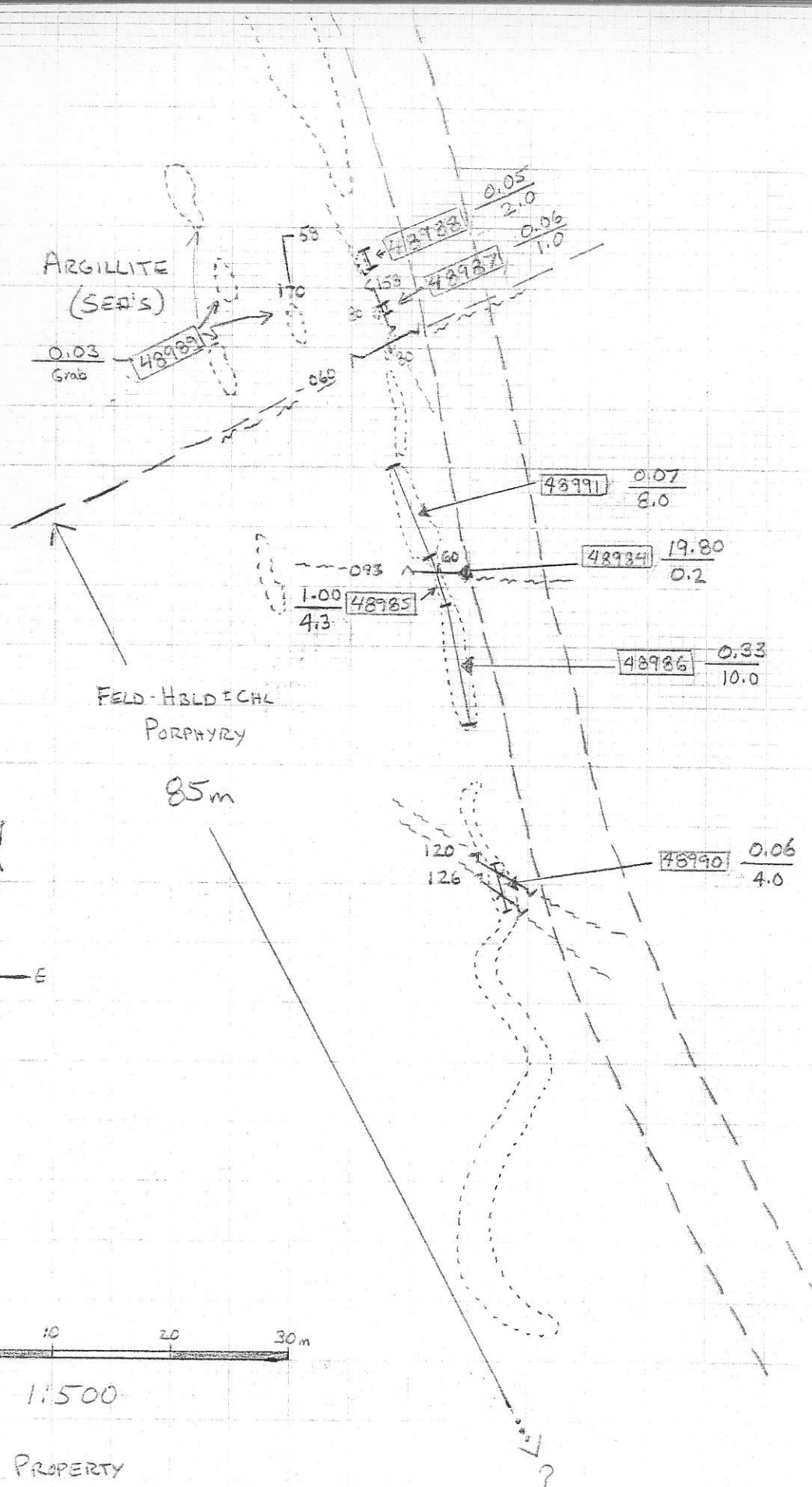
North



FRAW PROPERTY  
BRIAN THURSTON  
July 03/98

FELD-Hld  
Porphyry





## ROCK SAMPLE DESCRIPTIONS

Sampler BRIAN THURSTON

"FRAN PROPERTY"

Assay No.	Area	Date	Sample Width (m)	Sample Description	Au (g/T)	Ag (g/T)
48969	20m NW of L3-390N	July 3/98	3.0	fine to med. grain Feld-Hold Porphyry & Gossan on fractures & in soil; No Qtz but Gauge Seams, 3-4% Py	0.04	
970	" "	"	Grab	Same Host as Above; w Qtz Veins 5-8% of sample <0.5% Py, Avg. 4cm Healed Shears w Qtz; Strong Gossan <sup>+</sup> He	1.04	
971	BETWEEN Above AREA & PIT #4	"	Grab	Host - med. grain Feld-Hold Porphyry Intrusion <1% Py on fract's & diss; Brown-Orange Rust on Fract's	0.02	
972	PIT #4 <sup>54° 59' 28" N</sup> <sub>124° 26' 05" W</sub>	"	0.35	Qtz Vein strike 110° → 120° / Dip?; 85% White Qtz w tr. Py diss & <0.5% <sup>Py on</sup> Fract's; *Galena? <sup>Grey</sup> metallic as Pods	10.10	
973	" "	"	3.6	mainly Hanginwall of Intrusion as above; Qtz <1% Py <1% diss; Py 2% Massive Pods; Med-Strong Gossan <sup>Pervasive</sup> Fract's	0.53	
974	Trench 4m West of PIT #4	"	1.2	mainly Footwall to vein, up to 2% Qtz, 2% Py Feld-Hold Porphyry	5.83	
975	" "	"	0.35	~20cm White Qtz; ~20cm Bx-Healed Shear; <sup>Acid Leached</sup> Yellow Green stain; 3-4% Py; 2% <sup>Galena?</sup> Grey metallic pods; 10% Diss	27.73	
976	Trench 10m East of PIT #4	"	0.5	~40cm Qtz Vein; 10cm Strong Gossan Shear w Py; <sup>Leached yellow</sup> Strike 099°/78° south; ~60% Qtz; 5-8% Py as Pods & <sup>veins</sup>	49.13	
977	" "	"	1.0	Footwall to above Vein; Rusty & Jarosite on Fract's Intrusion; No Qtz or SHEARS; <1% Py but Leached	1.51	
48978	AREA # 5 corner in Road	"	0.2	<sup>20cm</sup> Shear in Intrusive >70% Py <sup>7% Diss</sup> 3% Fract.; Tr Carb. Vn's Texture Obscure w <sup>remnant</sup> Plagioclens, Poss Dyke? 046°/-90°	0.06	

2.0

~2m wide Dyke? 20m on strike w above shear  
~10% Py

## ROCK SAMPLE DESCRIPTIONS

Sampler BRIAN THURSTON

"FRAN PROPERTY"

Assay No.	Area	Date	Sample Width (m)	Sample Description	Au (g/T)	Ag (g/T)
48979	Location 7	July 3/98	(6m) Grab	Feld-Hbl'd Porphyry w $> 5\%$ Py, locally 8% Py Diss $\gg$ Fract.; Rusty fractures	0.07	
980	Location 8	"	(15m) Grab	Feld-Hbl'd Porphyry w 1-2% Py Diss; Locally 4% Py; Areas of Aphanitic (Dykes?) within Intrusive; <sup>Small Shears</sup> <del>Weak Gossan</del> eliminated From Sample	0.03	
981	"	"	1.0 o/c Plus GRAB	1m of o/c & Grab of Strong Gossan, weak Jarosite in healed fault material w Massive Kaolinite; leached; He on <sup>fract's</sup>	0.54	
982	Location 9	"	$\sim 1$ m	6m length of 0.5 $\rightarrow$ 1m wide Horizontal Fault $108^\circ/20^\circ$ Gossan, hem, Rusty healed Gouge in (Chl, Bio) <sup>Feld-Hbl'd Intrusion</sup>	0.47	
983	"	"	(15m) GRAB	Feld-Hbl'd Porphyry w Chl $\pm$ Bio Phenos; $< 1\%$ Py diss skipped Above Fault but including shears; Patchy Gossan	0.68	
984	SITE #10	"	0.2	Shear $093^\circ/60^\circ$ N; 1m chip of 0.2m wide Shear Strong Rust-Gossan, Goethite on Fract's; <sup>Feld-Hbl'd Porphyry?</sup>	19.90	
985	"	"	4.3	Fractured/Sheared Intrusive Rx. v. friable w Gouge, <sup>med. Gossan</sup> overlaps (48948) But does not include it; Approx. 1.5m south of Shear and 2.6m North; 1.5m south more competent & minor Gossan.	1.00	
986	NORTH From END of [48985]	"	10.0	Very Competent Feld-Hbl'd Porphyry, 1% diss Py, 4% Hbl'd, 10% Feld phenos Jointing $067^\circ/70^\circ$ N $\pm$ $160^\circ/80^\circ$ W Tr Carb Vens, Tr Cpydiss.	0.33	
987	25m South of SITE #10	"	1.0	Very friable Strong gossan zone $\pm$ He in seds (argillites) $\sim 3$ m from Porphyry Intrusive Contact <sup>sample strike at <math>164^\circ</math></sup> $\pm$ <del>Poss Shear @ <math>158^\circ/78^\circ</math> W</del>	0.06	
48988	3m South of [48987]	"	2.0	Same as above w black an fractures Joint/Shear @ $158^\circ/7^\circ$ Poss. Sampling along Shear; v. Poor o/c; Sample Strike $164^\circ$ <sup>80W</sup>	0.05	





# MINERAL ENVIRONMENTS LABORATORIES LTD.

SPECIALISTS IN MINERAL ENVIRONMENTS  
CHEMISTS • ASSAYERS • ANALYSTS • GEOCHEMISTS

**VANCOUVER OFFICE:**  
8282 SHERBROOKE STREET  
VANCOUVER, BC, CANADA V5X 4E8  
TELEPHONE (604) 327-3436  
FAX (604) 327-3423

**SMITHERS LAB:**  
3176 TATLOW ROAD  
SMITHERS, BC, CANADA VOJ 2N0  
TELEPHONE (250) 847-3004  
FAX (250) 847-3005

*Quality Assaying for over 25 Years*

## Assay Certificate

8S-0039-RA1

Company: **WESTERN PROSPECTOR GROUP**  
Project: **FRAN**  
Attn: **WAYNE ROBERTS**

Jul-13-98

We hereby certify the following Assay of 23 ROCK samples  
submitted Jul-05-98 by BRIAN THURSTON.

Sample Name	Au-fire g/tonne
48969	0.04
48970	1.04
48971	0.02
48972	* 10.10
48973	0.53
48974	5.83
48975	* 27.73
48976	* 49.13
48977	1.51
48978	0.06
48979	0.07
48980	0.03
48981	0.54
48982	0.47
48983	0.68
48984	* 19.80
48985	1.00
48986	0.33
48987	0.06
48988	0.05
48989	0.03
48990	0.06
48991	0.07

\* GRAVIMETRIC FINISH

Certified by \_\_\_\_\_

Min-En Laboratories





# MINERAL ENVIRONMENTS LABORATORIES LTD.

SPECIALISTS IN MINERAL ENVIRONMENTS  
CHEMISTS • ASSAYERS • ANALYSTS • GEOCHEMISTS

**VANCOUVER OFFICE:**  
8282 SHERBROOKE STREET  
VANCOUVER, BC, CANADA V5X 4E8  
TELEPHONE (604) 327-3436  
FAX (604) 327-3423

**SMITHERS LAB:**  
3176 TATLOW ROAD  
SMITHERS, BC, CANADA V0J 2N0  
TELEPHONE (250) 847-3004  
FAX (250) 847-3005

*Quality Assaying for over 25 Years*

## Geochemical Analysis Certificate

8S-0040-SG1

Company: **WESTERN PROSPECTOR GROUP**  
Project: **FRAN**  
Attn: **WAYNE ROBERTS**

Jul-10-98

We hereby certify the following Geochemical Analysis of 24 SOIL samples submitted Jul-05-98 by BRIAN THURSTON.

<b>Sample Name</b>	<b>Au-fire PPB</b>
L4+00N	>10000
L4+25N	68
L4+50N	27
L4+75N	30
L4+100N	21
L4+150N	40
L4+200N	60
L4+25S	29
L4+50S	23
L4+75S	5
L4+100S	18
L4+150S	491
L4+200S	77
L4+225S	3400
L4+250S	67
L4+275S	51
L4+300S	36
L4+350S	99
L4+400S	3
L3+50E	9
L3+100E	25
L3+125E	23
L3+150E	14
L3+167E	745

Certified by

*Min-En Laboratories*



**MINERAL  
ENVIRONMENTS  
LABORATORIES LTD.**

SPECIALISTS IN MINERAL ENVIRONMENTS  
CHEMISTS • ASSAYERS • ANALYSTS • GEOCHEMISTS

**VANCOUVER OFFICE:**  
8282 SHERBROOKE STREET  
VANCOUVER, BC, CANADA V5X 4E8  
TELEPHONE (604) 327-3436  
FAX (604) 327-3423

**SMITHERS LAB:**  
3176 TATLOW ROAD  
SMITHERS, BC, CANADA V0J 2N0  
TELEPHONE (250) 847-3004  
FAX (250) 847-3005

*Quality Assaying for over 25 Years*

**Geochemical Analysis Certificate**

8S-0040-SG2

Company: **WESTERN PROSPECTOR GROUP**  
Project: **FRAN**  
Attn: **WAYNE ROBERTS**

Jul-10-98

We hereby certify the following Geochemical Analysis of 12 SOIL samples submitted Jul-05-98 by BRIAN THURSTON.

<b>Sample Name</b>	<b>Au-fire PPB</b>
L3+175E	126
L3+200E	147
L3+225E	89
L3+250E	8850
L3+275E	1470
L3+325E	11
L3+375E	14
L3+400E	136
L3+425E	94
L3+450E	21
L3+475E	3
L3+525E	12

Certified by \_\_\_\_\_

*Min-En Laboratories*

# WESTERN PROSPECTOR GROUP

Attention: WAYNE ROBERTS

Project: FRAN

Sample: ROCK

## Mineral Environments Laboratories

8282 Sherbrooke St., Vancouver, B.C., V5X 4E8

Tel (604) 327-3436 Fax (604) 327-3423

Report No : 8S0039

Date : Jul-13-98

### MULTI-ELEMENT ICP ANALYSIS

Aqua Regia Digestion

Sample Number	Ag ppm	Al %	As ppm	Ba ppm	Be ppm	Bi ppm	Ca %	Cd ppm	Co ppm	Cr ppm	Cu ppm	Fe %	K %	Mg %	Mn ppm	Mo ppm	Na %	Ni ppm	P ppm	Pb ppm	Sb ppm	Sc ppm	Sn ppm	Sr ppm	Ti %	V ppm	W ppm	Y ppm	Zn ppm	Zr ppm
48969	<0.2	2.83	140	170	<0.5	<5	0.74	<1	11	24	470	6.78	0.21	0.72	335	8	0.05	4	1520	6	5	4	<10	93	0.11	113	<10	6	51	8
48970	0.2	1.63	1870	70	0.5	5	0.19	<1	15	39	811	12.69	0.20	0.50	510	28	0.02	6	1430	24	10	3	<10	21	<0.01	79	<10	7	343	9
48971	<0.2	1.58	10	90	<0.5	<5	1.27	<1	7	35	43	3.00	0.15	0.44	355	<2	0.07	4	1210	2	<5	2	<10	69	0.08	67	<10	8	35	5
48972	8.8	0.26	1055	70	<0.5	<5	0.06	<1	3	144	83	1.25	0.24	0.03	40	8	0.01	5	180	100	5	<1	<10	9	<0.01	5	<10	1	468	3
48973	2.6	1.24	225	100	<0.5	<5	0.34	<1	7	38	338	4.63	0.28	0.44	235	8	0.04	7	790	42	5	2	<10	18	0.03	36	<10	4	607	9
48974	6.6	0.65	880	100	<0.5	<5	0.25	<1	5	58	157	3.24	0.31	0.20	95	16	0.01	7	600	290	5	1	<10	14	<0.01	11	<10	2	1024	6
48975	31.0	0.33	>10000	90	<0.5	15	0.13	<1	176	57	872	12.38	0.22	0.08	30	24	0.01	4	350	282	285	<1	<10	17	<0.01	16	40	<1	>10000	12
48976	54.0	0.38	>10000	40	<0.5	10	0.04	<1	35	96	2277	11.44	0.18	0.06	305	18	0.01	11	310	1018	45	<1	<10	6	<0.01	16	30	<1	>10000	9
48977	2.2	0.95	4255	250	<0.5	<5	0.16	<1	14	33	254	3.94	0.32	0.21	195	44	0.03	5	860	124	10	2	<10	13	<0.01	17	<10	3	947	5
48978	<0.2	1.59	100	40	<0.5	<5	1.33	<1	13	50	345	4.08	0.07	0.65	140	26	0.05	16	1360	6	<5	3	<10	21	0.10	55	<10	6	37	6
48979	<0.2	1.29	70	50	<0.5	<5	0.90	<1	15	72	272	3.61	0.12	0.78	215	6	0.06	28	920	6	<5	4	<10	17	0.16	79	<10	8	46	5
48980	<0.2	2.16	20	50	<0.5	<5	1.72	<1	9	22	29	3.74	0.11	0.71	440	<2	0.06	4	1430	2	<5	2	<10	46	0.08	87	<10	8	34	5
48981	<0.2	2.07	20	90	<0.5	<5	0.85	<1	13	17	290	9.72	0.14	0.57	230	10	0.04	4	1350	12	5	3	<10	85	0.12	114	<10	5	32	8
48982	<0.2	3.11	20	130	<0.5	<5	2.35	<1	21	21	75	5.60	0.13	1.12	690	4	0.04	7	1570	4	<5	4	<10	221	0.13	120	<10	6	46	6
48983	<0.2	2.20	55	50	<0.5	<5	1.29	<1	21	13	271	8.71	0.11	0.76	440	16	0.03	6	1510	12	5	3	<10	44	0.12	113	<10	7	39	8
48984	0.8	3.33	45	110	0.5	5	0.27	<1	60	3	1729	12.90	0.13	0.69	415	62	0.04	12	1060	20	5	4	<10	100	0.01	162	<10	7	29	18
48985	<0.2	2.66	10	70	0.5	<5	0.41	<1	23	10	280	5.57	0.11	1.00	655	6	0.03	9	1190	8	<5	5	<10	60	<0.01	92	<10	8	35	8
48986	<0.2	2.16	5	60	<0.5	<5	1.72	<1	13	15	74	3.98	0.14	0.97	565	<2	0.09	9	1920	2	<5	3	<10	60	0.08	94	<10	8	32	6
48987	<0.2	3.66	50	40	0.5	<5	0.87	<1	22	22	380	6.98	0.13	2.07	785	<2	0.02	15	1700	6	5	15	<10	88	<0.01	167	<10	14	88	5
48988	<0.2	2.97	5	110	0.5	<5	0.72	<1	18	19	133	5.77	0.33	1.60	575	<2	0.04	15	1740	4	<5	13	<10	80	0.02	144	<10	11	58	6
48989	<0.2	1.75	30	90	<0.5	<5	1.03	<1	16	25	140	3.45	0.46	1.18	390	<2	0.07	11	1860	2	<5	2	<10	61	0.12	97	<10	6	38	5
48990	<0.2	2.98	10	80	0.5	<5	0.51	<1	15	15	87	5.02	0.18	0.95	585	<2	0.03	9	1500	4	5	7	<10	40	<0.01	88	<10	8	44	7
48991	<0.2	1.64	15	50	<0.5	<5	1.44	<1	6	16	62	2.08	0.11	0.52	255	<2	0.06	2	1240	2	<5	2	<10	68	0.06	48	<10	6	25	7

A .5 gm sample is digested with 10 ml 3:1 HCl/HNO3 at 95c for 2 hours and diluted to 25ml with D.I.H2O.

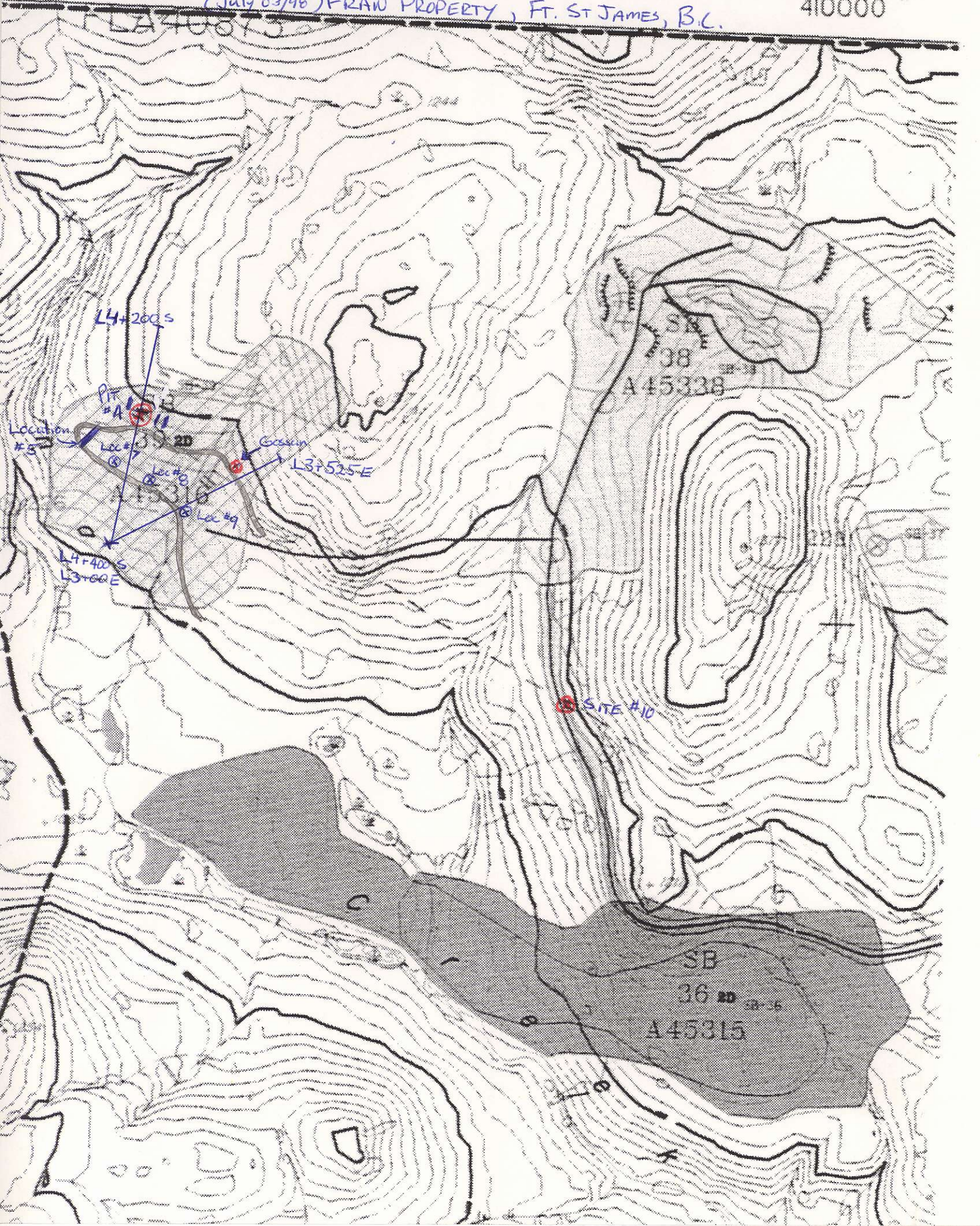


408000

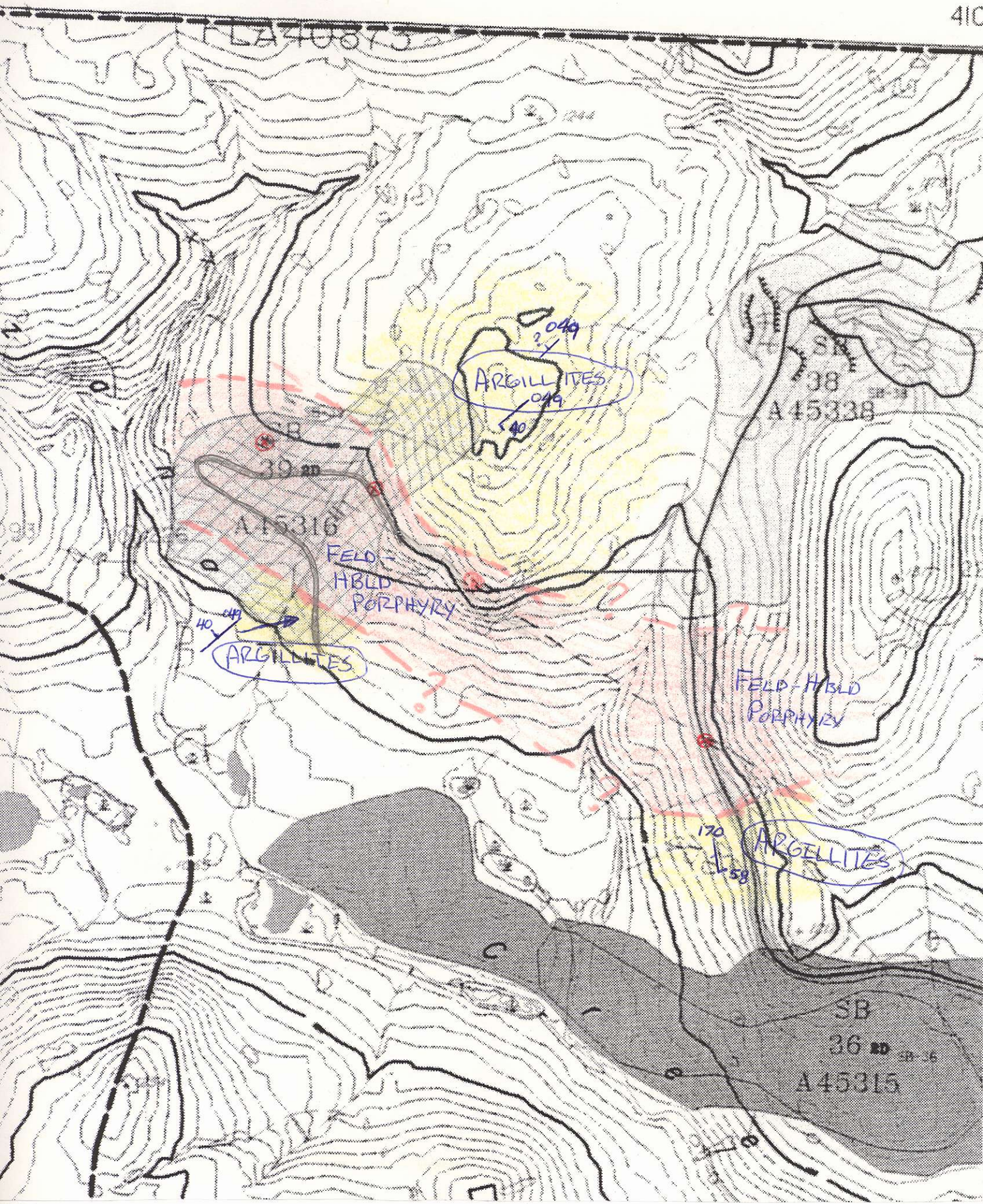
SOIL LINES & SAMPLE SITES

(July 03/98) FRAW PROPERTY, FT. ST JAMES, B.C.

410000



LA40873



2000

404000

406000

408000

410000

