

## Kettle Property Summary

- high grade Au and Ag+Pb+Zn veins (values to 1.6 oz/t Au and to 56 oz/t Ag, 35% Pb)
- potential for larger, lower grade bulk tonnage type deposit
- extensive alteration (clay, silicification) in Cretaceous intrusives (~ 2 km x 500 m zone)
- major regional fault system (Kettle River Fault)
- large area of stockwork quartz veining identified with anomalous Au, Ag values
- numerous Au soil anomalies. Untested.
- numerous IP chargeability anomalies. Untested.
- placer gold occurrence in the Kettle River, immediately downstream of the claims

### **Location, Terrain and Claims:**

- 55 km southeast of Vernon B.C. on NTS 82E/15E and TRIM 082E.097
- excellent road access
- moderate topography, moderate forest cover, generally good rock exposure
- ten 2-post mineral claims, owned by John Kemp and Linda Caron
- all claims in good standing to August, 2002

### **Property Description:**

Mineralized quartz veins were first discovered on the property in the early 1970's. The property was held continuously from the time of its discovery until the spring of 1999. The current claims were acquired by staking during the summer of 1999.

Most of the past work on the property has focussed on exploring the known veins. There is a widespread alteration system with anomalous gold and silver values in rock and potential for both high grade veins and a larger, lower grade, bulk tonnage type deposit. Geology, structure and alteration are poorly understood. Numerous geophysical (IP chargeability) and gold soil anomalies remain untested.

Four main mineralized zones are known to occur on the property, as shown on the attached property map and detailed below. The zones are spatially related to a large zone of intensely altered Cretaceous intrusives which intrudes metasediments and metavolcanics of the Permian Anarchist Group. The alteration occurs over an area of approximately 2 km x 500 m and appears to be largely controlled by the major north trending Kettle River fault.

### **South Zone**

A N-NW striking, shallow W dipping quartz vein is exposed in large open cuts over a strike length of 185 metres. The vein ranges from 0.5 to 4.1 m in width, and averages about 1.5 m wide. It is hosted in unaltered Kspar megacryst porphyry, and cut by late decomposing

biotite-lamprophyre dykes. Grab samples from the vein have returned values to **1.6 oz/t Au, 4.5 oz/t Ag, 1.7% Pb and 2% Zn.**

### Pb Zone

Several trenches and open cuts expose a mineralized shear zone over a strike length of 300 metres. The shear strikes about 070-080°, with a moderate-steep S dip, and averages about 30 cm in width. The shear hosts a narrow mineralized quartz vein. Drilling has tested the zone to 75 metres depth and it remains open at depth. Surface sampling from the zone has returned grades of:

**20.8 oz/t Ag over 2.5 m** (in the K1 trench, hangingwall to the main shear)

**56.7 oz/t Ag over 2.4 m**

and grab samples to **32 oz/t Ag, 35% Pb and 10% Zn.** Copper and gold are weakly anomalous. Silver reportedly occurs as fine grained ruby silver and as native silver. A small portable mill set up on the property in the early 1980's largely processed material from the Pb Zone (with minor ore from the South and Hg Zones).

### HG (High Grade) Zone

In the HG zone, subparallel quartz veins and veinlets are hosted in altered intrusives. The veins contain about 5% sulfides (py, cpy, bornite and galena). Grab samples from surface have returned up to **0.61 oz/t Au and 9.3 oz/t Ag,** while more detailed chip sampling from the zone gave an average of 0.24 oz/t Au and 2.4 oz/t Ag over a 0.75 m width. Drilling has returned values to 0.5 oz/t Au, 8.2 oz/t Ag, 1.3% Pb, 0.1% Zn, 0.1% Cu over 0.7 m from this zone. The zone has been tested by trenching and drilling and remains open on strike (and at depth?). A 24 ton bulk sample was collected from this zone in the early 1980's and shipped to Slocan City for mill testing. The sample returned an average grade of 0.11 oz/t Au, 4.2 oz/t Ag.

### Stockwork Zone (Including Vuggy Vein, Switchback Vein, Bluff Vein)

The Stockwork zone is an area of about 300 x 450 metres where sulfide mineralization is associated with a brecciated quartz stockwork in qtz-seric-py altered intrusive. Veins are bull-type quartz veins with pyrite. The zone has a large coincident IP anomaly as well as a coincident Au soil anomaly. Several larger veins within this zone are given individual names (Vuggy Vein, Switchback Vein, Bluff Vein). Gold and silver values in rock samples from the zone are anomalous (to several 100 ppb Au). There has been only limited surface sampling and drilling. One drill hole did returned **0.7 m of 0.112 oz/t Au and 1.3 oz/t Ag.**

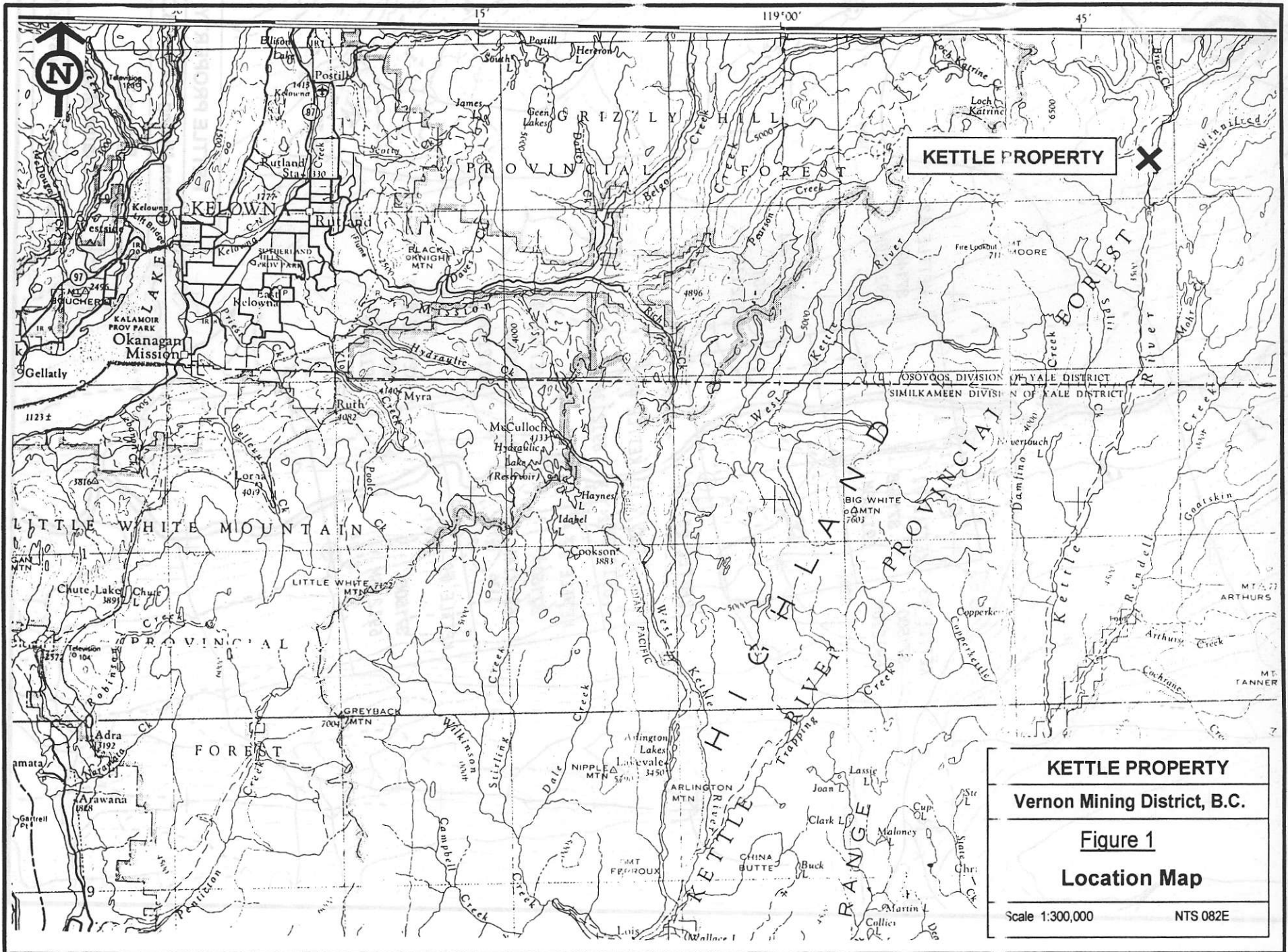
*References and additional information available on request.*

#### Contact:

John Kemp  
Box 866  
Grand Forks, B.C.  
V0H 1H0 (250) 442-2917

or

Linda Caron  
Box 2493  
Grand Forks, B.C.  
V0H 1H0 (250) 442-5078

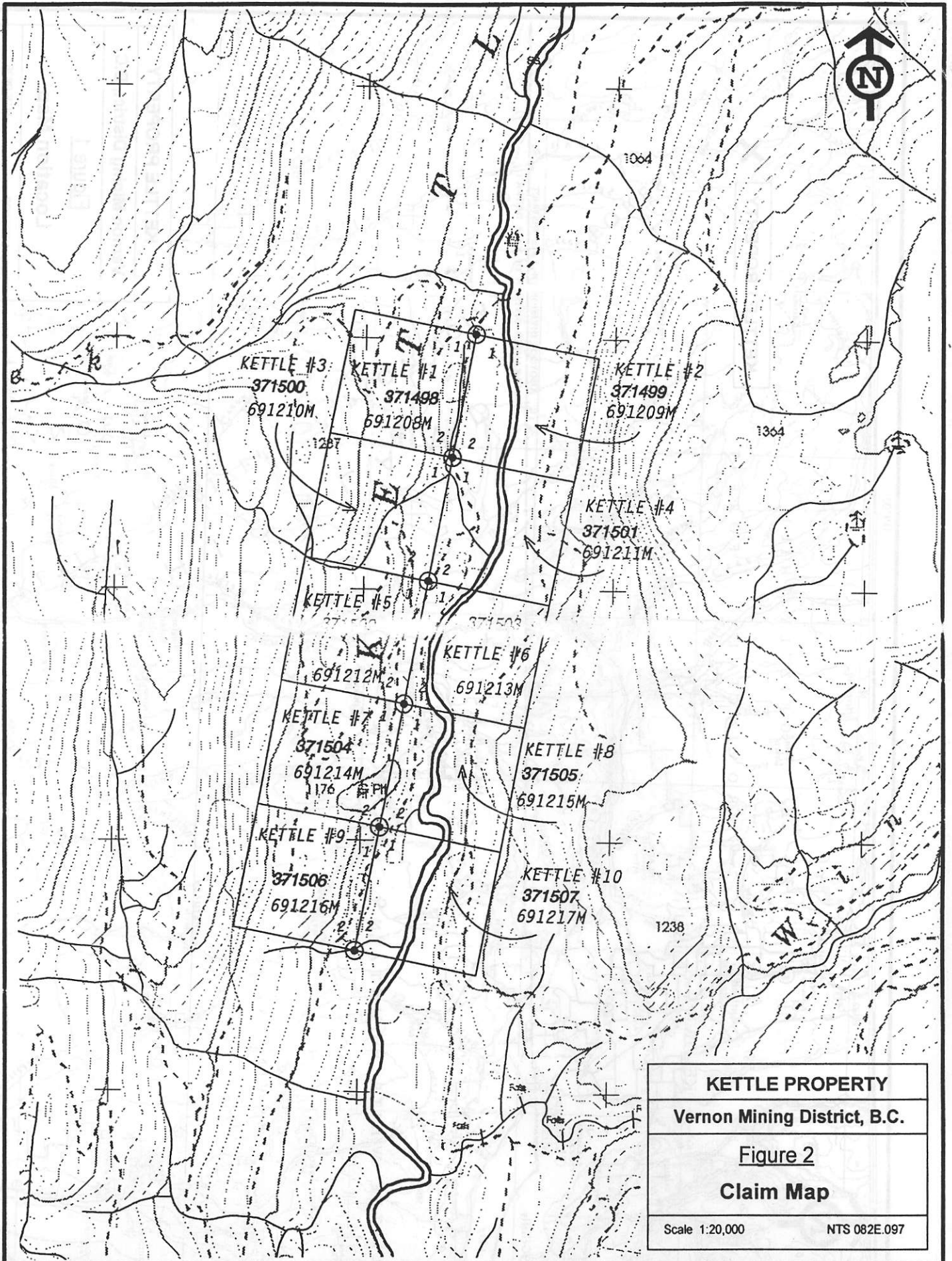


**KETTLE PROPERTY** X

**KETTLE PROPERTY**  
 Vernon Mining District, B.C.

**Figure 1**  
**Location Map**




Scale 1:300,000      NTS 082E



**KETTLE PROPERTY**  
 Vernon Mining District, B.C.  
 Figure 2  
 Claim Map  
 Scale 1:20,000      NTS 082E.097



**LEGEND**

-  Au soil anomaly (> 75 ppb Au)
-  IP chargeability anomaly
-  alteration zone

To Hwy 6  
18 km



claim boundary

Switchback vn

Stockwork Zone

Bluff vn

Vuggy vn

HG Zone

no Au soil coverage

1200

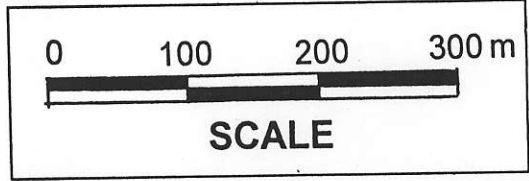
Pb Zone

KETTLE RIVER

1176

South Zone

To Westbridge  
100 km



**KETTLE PROPERTY**  
Vernon Mining District  
**General Property Map**  
NTS 82E/15E TRIM 82E.097