

STATION	MAIN VEIN EXT.	TARGET	HOLE	DU 1
AZIMUTH	000°	DATE ST.	PEARL-UNION	
DIP	± 60°	DATE FIN.	TELEPHONE LOG.	
ELEV.	2920 / 88450E	TOT. FTG.	520157	

INTERVAL	DESCRIPTION.	TOT. FTG. DATE FT.
0 - 35	cherty Tuff	
- 45.8	volc.	
- 55	PURPH	
58.2	bx. cherty Tuff	
62.5	VEIN - minor py on fract. < 1%.	
176	bx cherty Tuff or lg. volc. Tuff.	176'

STATION	MAIN VEIN EXT.	TARGET	HOLE	PV 2.
AZIMUTH	000	DATE ST.	PEARL - UNION	
DIP	+80°	DATE FIN.	TELEPHONE LOG.	
ELEV.		TOT. FTG.	107	

INTERVAL	DESCRIPTION	TOT. FTG. DATE FT.
82-96	VEIN 1-2% pg.	
-107	bx. chert & H.	283'

STATION	MAIN VEIN EXT.	TARGET	130-140'	HOLE	PU 3.
AZIMUTH	080	DATE ST.		PEARL-UNION	
DIP	+55°	DATE FIN.	Nov 10.	TELEPHONE LOG.	
ELEV.	/	TOT. FTG.	125		

INTERVAL	DESCRIPTION	TOT. FTG. DATE FT.
100-109	VEIN- 1-2% py T.Th. 5'	
0-15	Andesitic chert Tuff	
31.6	Dacitic Tuff	
33.3	Tuff box	
37.6	Dacitic Tuff box.	
53.8	✓ dust ✓ ✓	
80.8	✓ ✓ ✓	
83.1	Andesite	
101	Dacitic Tuff	
108.2	QUARTZ VEIN T.Th. 4'	
109.2	SIL BX 50% QTZ.	
116	SIL BX. 20-30% QTZ	
125	DACITIC TUFF MINOR BX.	408'
	Intercept plots 85' E of 88150 95' above level.	

STATION	MAIN VEIN EXT.	TARGET	HOLE	PU #
AZIMUTH	080	DATE ST.	PEARL-UNION	
DIP	+30°	DATE FIN.	TELEPHONE LOG.	
ELEV.	/	TOT. FTG.	144	

INTERVAL	DESCRIPTION	TOT. FTG.	DATE FT.
0-24	Andesitic chert Tuff		
36.9	cherty Tuff box		
82	dusty ✓		
88.3	multilithic box		
119.6	cherty Tuff box.		
121.3	sil cherty Tuff box.		
124.3	QUARTZ VEIN T Th. 2.1'		
126.8	PORPHY DYLE.		
131.5	SIL TUFF BX.		
138.3	QTE VEIN T. Th. 4.8'		
144	Cherty Tuff box.		552'

LOCATION ?

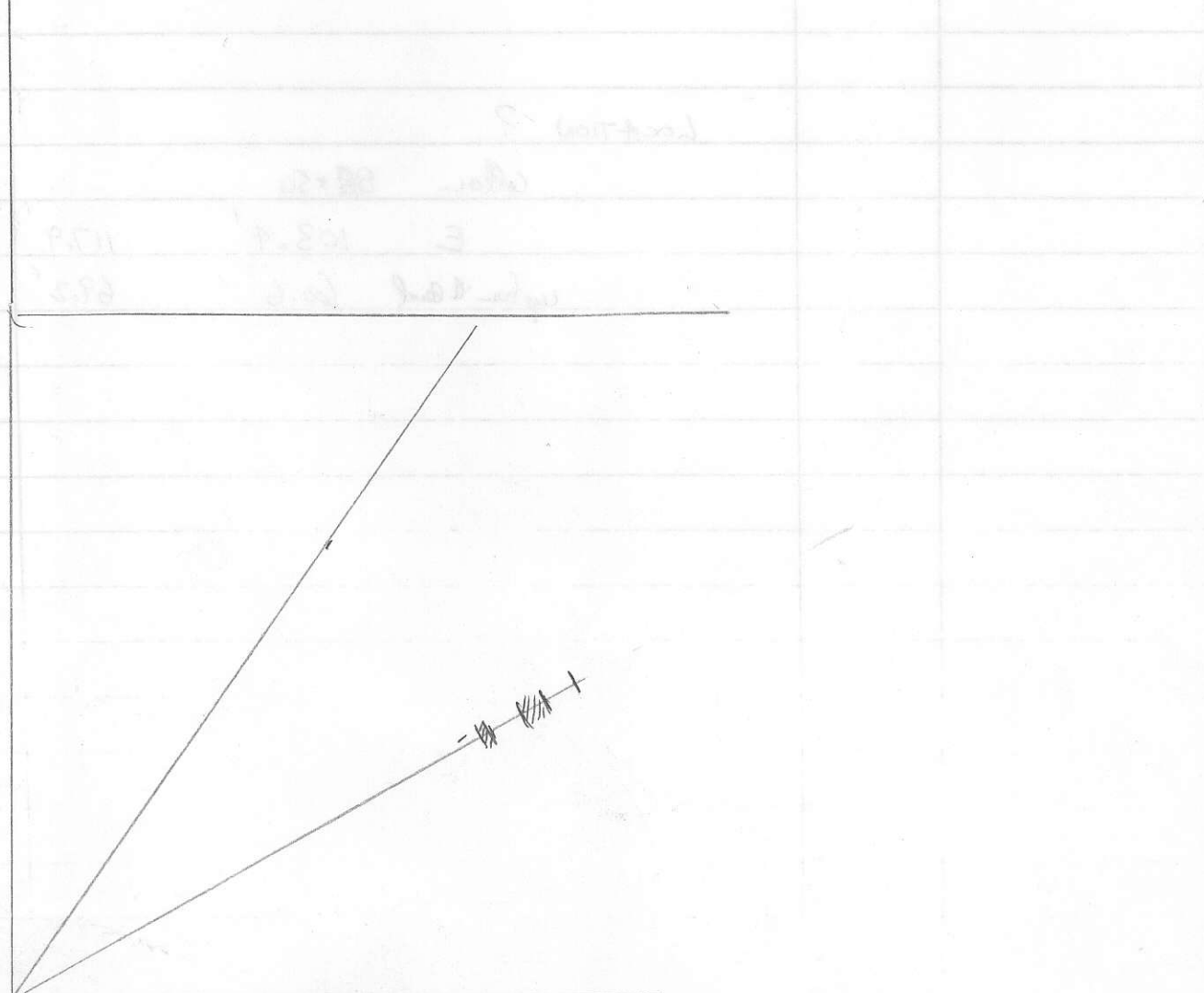
Collar 88+50

E. 103.4' 117.9'

Cap from level 60.6' 69.2'

1941	1942	1943	1944	1945	1946	1947	1948	1949	1950	1951	1952	1953	1954	1955	1956	1957	1958	1959	1960

Year	Location	Notes
1941	Chickadee	1st year
1942	Chickadee	2nd year
1943	Chickadee	3rd year
1944	Chickadee	4th year
1945	Chickadee	5th year
1946	Chickadee	6th year
1947	Chickadee	7th year
1948	Chickadee	8th year
1949	Chickadee	9th year
1950	Chickadee	10th year
1951	Chickadee	11th year
1952	Chickadee	12th year
1953	Chickadee	13th year
1954	Chickadee	14th year
1955	Chickadee	15th year
1956	Chickadee	16th year
1957	Chickadee	17th year
1958	Chickadee	18th year
1959	Chickadee	19th year
1960	Chickadee	20th year



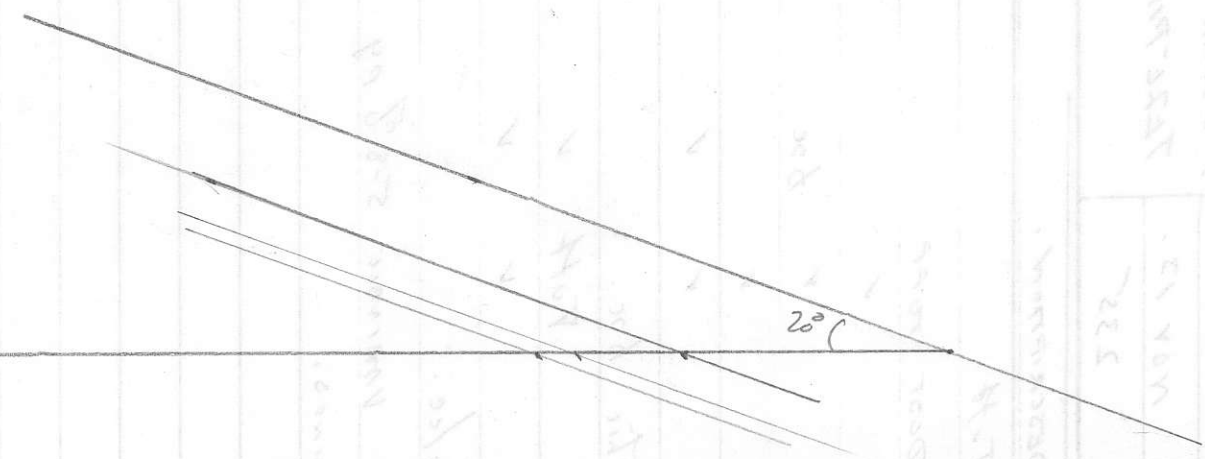
STATION	MAIN VEIN EXT.	TARGET	Same Pierce point as PU 2 ±10'	HOLE	PU 5
AZIMUTH	95°	DATE ST.		PEARL-UNION	
DIP	55°	DATE FIN.	NOV 13.	TELEPHONE LOG.	
ELEV.	2815 / 88150	TOT. FTG.	235		

INTERVAL	DESCRIPTION	TOT. FTG. DATE FT.
0-39.4	cherty Tuff	
44.7	DACITE DUST TUFF	
47.3	cherty ✓	
62.5	✓ ✓ bxc	
85.1	dusty ✓	
99.4	✓ ✓ ✓	
111.4	multilithic bxc.	
117.2	Tuff ✓	
130.4	✓ ✓	
156.3	f.p. dyke.	
NOV 13 169.8-235	VEIN VARIABLE 5-8' py.	
235	OLD WORKINGS,	787'

PLOTS - 110' E of 89+50E
 130' ABOVE LEVEL.
 PIERCE ON LONG SECTION
 97' E of DRILL SITE
 139' ABOVE LEVEL.
 20' ABOVE ORIG. PU 2
 1/4" under 0.1 & 0.5 material

Maximum temp 110
 50% above ground
 130' above ground

0.2 ft above ground
 130' above ground
 110' - 200'



9190
 = 80 Ppb

60000
 200 ft
 100 ft
 50 ft
 25 ft
 12.5 ft

212
 215-808
 212
 1.001
 5.111
 1.111
 4.00
 1.23
 2.01
 5.11
 1.11
 0.20

DATE	TIME	DEPTH	TEMP	WIND	WAVE	SEA	SWELL	MOON	PHASE
1982	0812	0812	22.0						
010		010	22.0						
010		010	22.0						
010		010	22.0						

1500-1600 - 100'
 1700 - 1800
 1900 - 2000

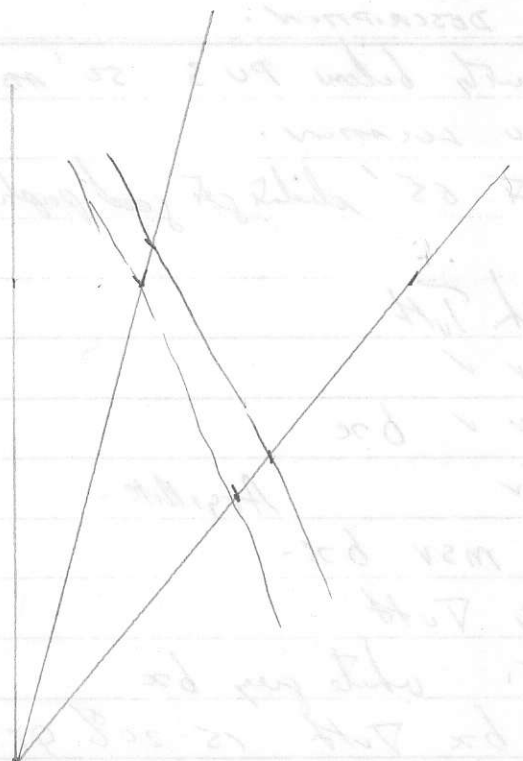
STATION	MAIN VEIN EXT.	TARGET	160-170	HOLE	PU 6
AZIMUTH	295 302	DATE ST.	NOV 14.	PEARL-UNION	
DIP	15.0	DATE FIN.		TELEPHONE LOG.	
LEV.		TOT. FTG.	177		

INTERVAL	DESCRIPTION	TOT. FT.
	hole drilled below PU 3 50' ABOVE DRIFT	840
	① CPU LOCATION.	
	vein about 65' didn't get good enough with	
	off.	
0-16	And ch Tuff	
-27.8	✓ ✓	
54.5	✓ ✓ bxc	
64.4	✓ Arg. Mite -	
69.5	Q.V msv bxc	
72	cherty Tuff	
76.8	Q.V. white grey bxc	
78.5	sil + bxc Tuff 15-20% Qtz	
81.8	Q.V. 90% Tuff frags.	
85.4	Pomph Dyle - well altered	
95.4	Dacitic Tuff.	
101	Silty ✓ black	
123.5	Dacitic ✓	
140	Silty ✓ 50-60° core angle	
143.8	Cherty ✓	
152.2	Silty ✓	
158.8	Dacitic Tuff bxc	
161.1	Silty ✓	
173.9	and. bxc.	
FOH 177	<u>Silty tuff bxc.</u>	964'

N.B. Vein found to south 25'
 - intersection 40' W of PU 1.
 E - 37.5' west, 47.8' top of vein.
 up from 4 level - 49.3' 62.7'

Station	100-170	100-170	100-170
Interval	100	100	100
Time	100	100	100
Notes	100	100	100

Interval	Description	Notes
0-10
10-20
20-30
30-40
40-50
50-60
60-70
70-80
80-90
90-100



N.B. - Name for road to court 22
 No. 101 of 1911

100

STATION	MAIN VEIN EXT.	TARGET	150'	HOLE	DU 7.
AZIMUTH	302	DATE ST.		PEARL-UNION	
DIP	30 +75°	DATE FIN.		TELEPHONE LOG.	
ELEV.	/	TOT. FTG.			

INTERVAL	DESCRIPTION	TOT. FTG.	DATE FT.
0-19'	Dacite Tuff		
29.7	" " brecciated		
31.9'	Andesite Tuff		
56.5	Dacite Tuff breccia		
63.0	Andesite		
71.1	Dacite Tuff		
99.3	" " (Duct.)		
82.6	porphyry dyke		
88.0	silicified Tuff (258 g/b)		
93.0	qtz veins, light grey, massive, 2-32 S°		
97.3	silicified breccia, 302 g/b, 72 S° (P ₄)		
101.8'	silicified tuff (502 g/b)		
104.6	qtz vein (32 P ₄)		
109.0	qtz vein (32 P ₄)		
111.0	silicified tuff (302 g/b)		
114.0	tuffaceous breccia		
E.O.H.			

P. POINT - 30' W of P U 2.

- @ 88' - vein - screw-up Bottom

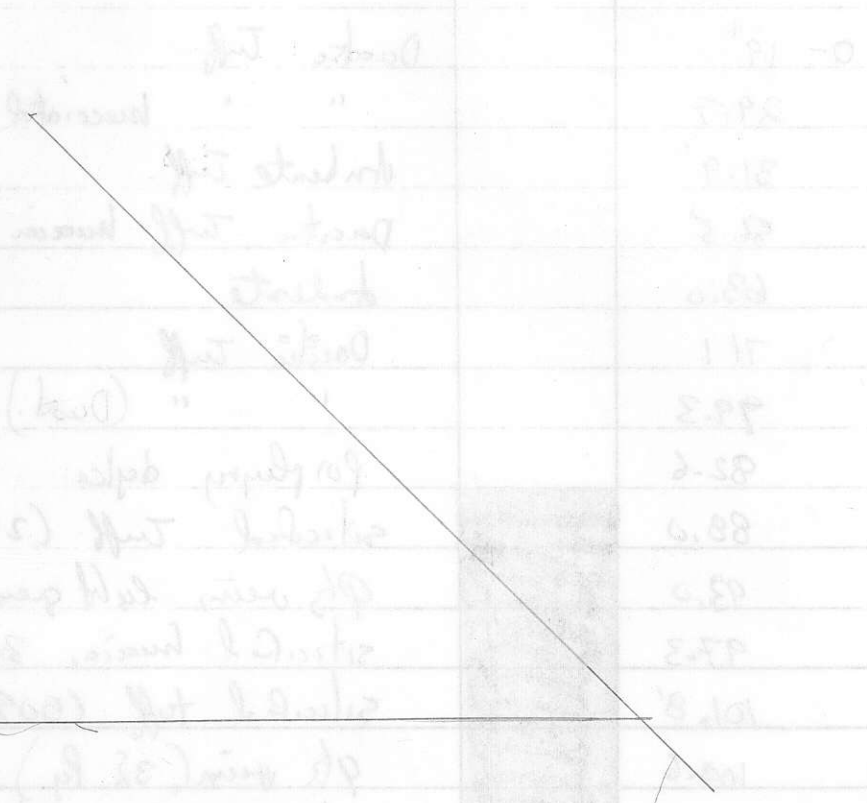
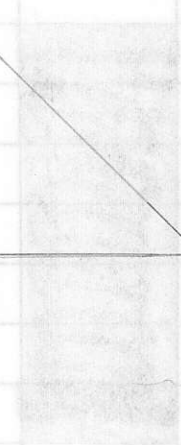
E 20.75' W 25.6' top

above level 85' 105.3'

50
93

90' slope distance
~ 63"
190 R₁ 1/2 - 192 R₂
in lens

Point - 80' west of
688' - vein - dipping
E. with a 52.6° dip
angle of 103°



STATION	MAIN VEIN EXT.	TARGET	Higher into crest zone ~ 170'	HOLE	PU 8
AZIMUTH	280 (285°)	DATE ST.		PEARL-UNION	
DIP	+ 45°	DATE FIN.		TELEPHONE LOG.	
ELEV.	/	TOT. FTG.			

INTERVAL	DESCRIPTION	TOT. FTG. DATE FT.
0-16'	Doctra Tuff	
38.8	tuff breccia	
67.0	multilithic breccia	
72.0	cherty argillite	
84.6	cherty tuff	
86	cherty argillite	
95	por. dyke	
100.4	silid tuff breccia	
106.8	cherty argillite	
111.7	tuff breccia	
113.0	qtz vein 32 Py 12 Zn, Tr. PbS, Turcholes	
116.5	silid multilithic breccia	
117.6	qtz vein, 5-8% Py 2% Zn	
120.6	multilithic breccia	
121.9	argillite	
123.5	multilithic breccia	
	E.O.H	
		1201'

195' - 30 min to drill 1 Rod.
 190' +45°

DEPTH	DESCRIPTION	INSTRUMENT
0-10	Driller's Log	0-10
10-20	Driller's Log	10-20
20-30	Driller's Log	20-30
30-40	Driller's Log	30-40
40-50	Driller's Log	40-50
50-60	Driller's Log	50-60
60-70	Driller's Log	60-70
70-80	Driller's Log	70-80
80-90	Driller's Log	80-90
90-100	Driller's Log	90-100
100-110	Driller's Log	100-110
110-120	Driller's Log	110-120
120-130	Driller's Log	120-130
130-140	Driller's Log	130-140
140-150	Driller's Log	140-150
150-160	Driller's Log	150-160
160-170	Driller's Log	160-170
170-180	Driller's Log	170-180
180-190	Driller's Log	180-190
190-200	Driller's Log	190-200

1501

STATION	MAIN VEIN EXT.	TARGET	GOLD STOPE	HOLE	PU-9
AZIMUTH	000°	DATE ST.		PEARL-UNION	
DIP	+45°	DATE FIN.		TELEPHONE LOG.	
ELEV.		TOT. FTG.			

INTERVAL	DESCRIPTION	TOT. FTG. DATE FT.
0-27	gbsite	
40.5'	dacitic tuff.	
50.5'	gbsite	
60.0	alters of pebbles cgl.	
70.0	andesite breccia	
71.9	of pebbles cgl.	
72.8	Fault breccia (75°/c.l.f.)	
93.1	andesitic feld. porphyry.	
121.5	cherty gbsite	
123.8	cherty gbsite + 2-4 cm gbs veins	
128.0	gbs vein, massive, 5/8 Py, Hem 2-3, chl, ser.	
129.2	gbs vein + fault breccia (30% glass)	
149.3	gbs pebble cgl.	
155.2	silty cherty tuff	
200.0'	multilithic conglomerate R.O.H.	

Pu-19

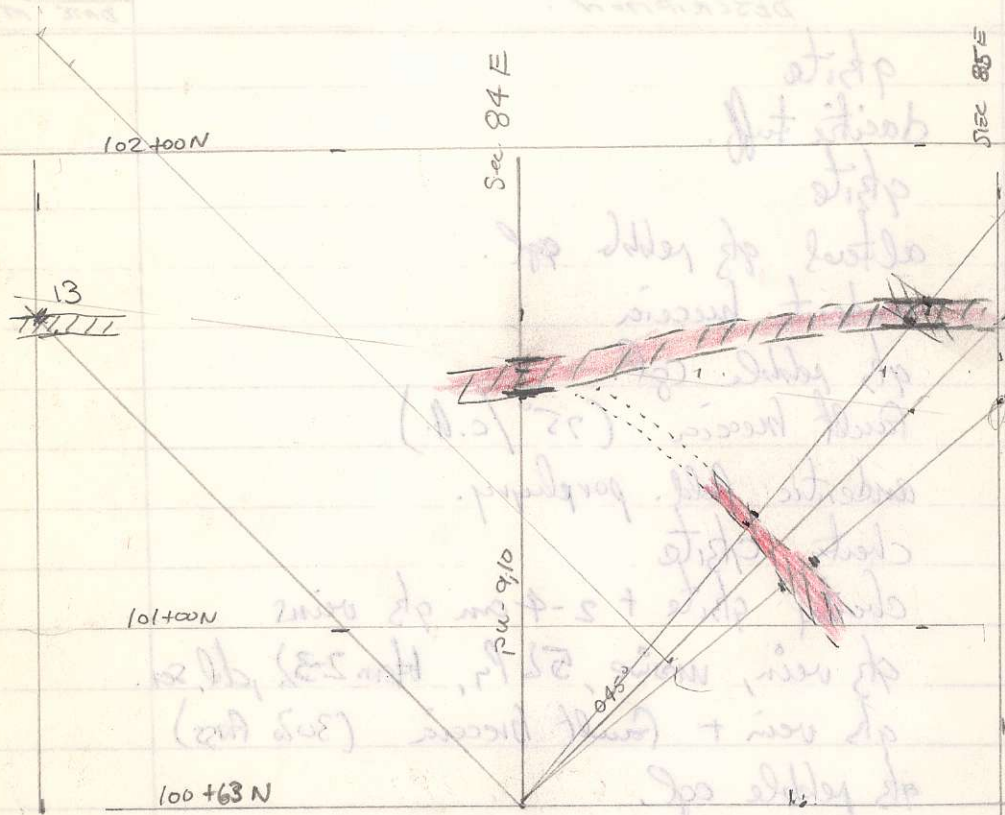
1000

1000

1000

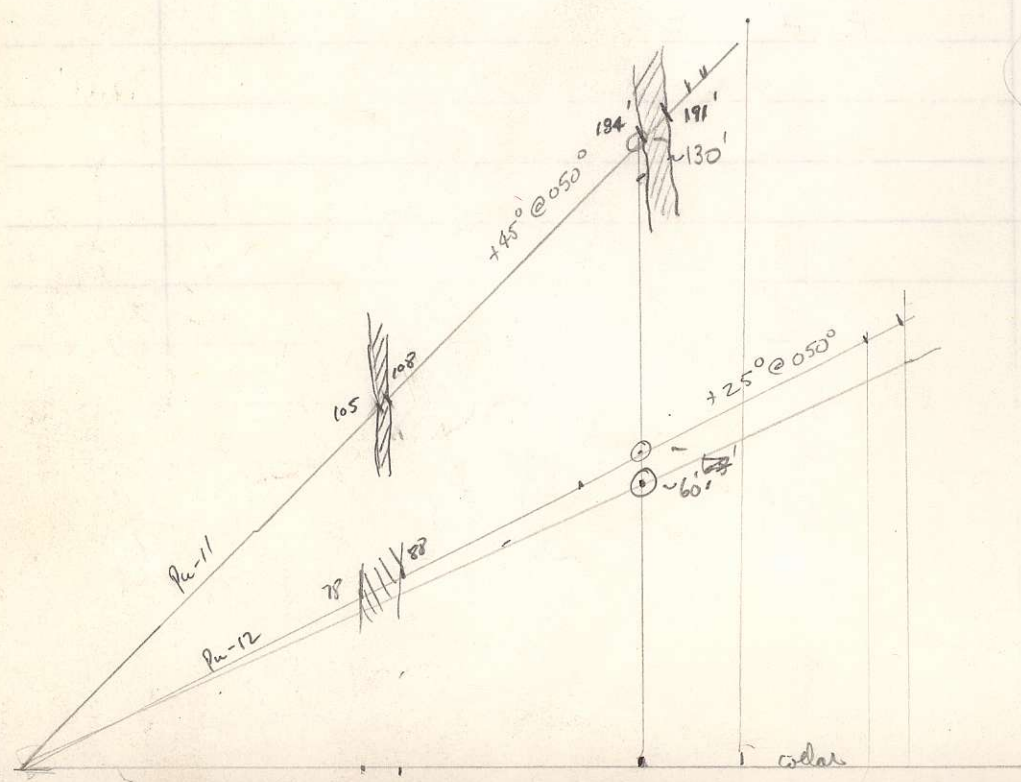
1000

1000



PLAN

Interval	175-0
2.00	
0.50	
0.00	
10.00	
11.90	
15.80	
18.50	
21.50	
23.80	
28.00	
32.50	
38.00	
42.50	
50.00	

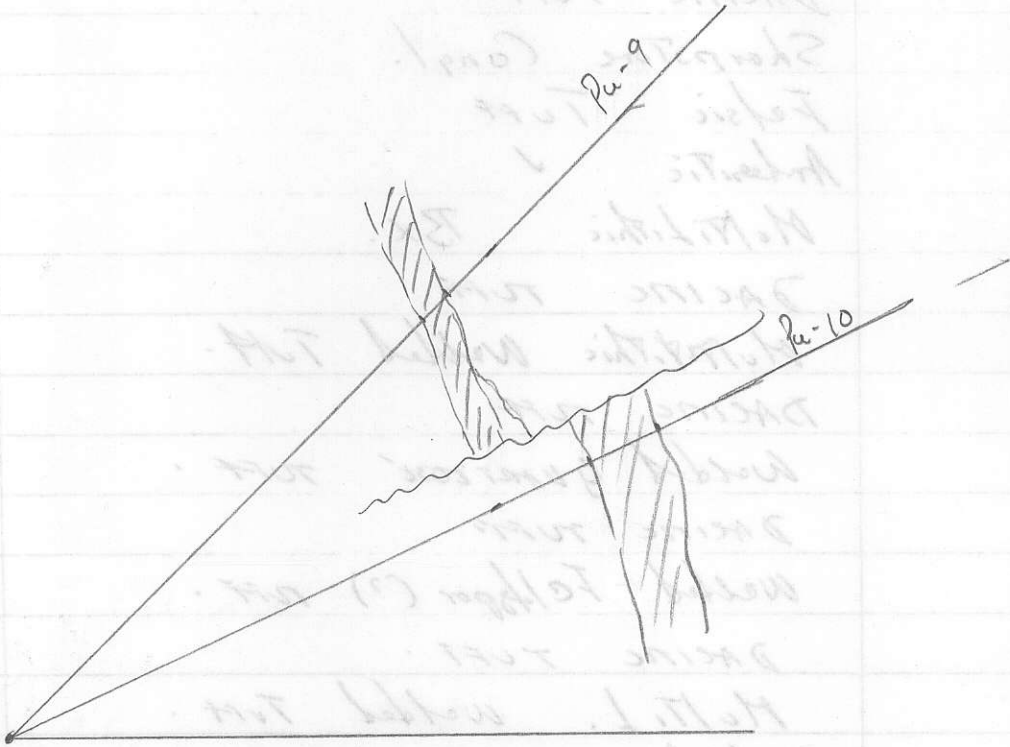


Scale

STATION	MAIN VEIN EXT.	TARGET	GOLD STOPE	HOLE	PW-10
AZIMUTH	000°	DATE ST.		PEARL-UNION	
DIP	+25°	DATE FIN.	NOV 22/84	TELEPHONE LOG.	
ELEV.		TOT. FTG.	200		

INTERVAL	DESCRIPTION	TOT. FTG.	DATE FT.
0-18	DACITE TUFF		
-27	Sharpstone Congl.		
34.8	Felsic TUFF		
44	Andesitic ✓		
44.7	Multi Lithic BX.		
51.2	DACITE TUFF		
54.8	Multi Lithic welded TUFF.		
58	DACITE TUFF		
62.5	Welded QUARTZOSE TUFF.		
75	DACITE TUFF		
79	Welded Feltpor (?) TUFF.		
83.1	DACITE TUFF.		
93.8	Multi L. welded TUFF.		
106.1	Andesite.		
117.5	Multi L. welded TUFF.		
119.8	Andesitic TUFF.		
126.3	QTZOSE Felsic welded TUFF.		
130.2	Cherty TUFF BX.		
137.8	QTZ Felsic welded TUFF.		
146.3	✓ ✓ ✓ ✓	143	# 3378-132.6-137.8 3379-143.2-146.3 3380-146.3-148.4 3381-148.4-149.3
148.4	SID. MULTI-L BX	ZONE.	LOTS OF
149.3	QUARTZ VEIN.	149	HEMATITE "IRON STOPE"
153	MULTI-L QTZO BX.		
178.7	✓ TUFF.		
185.6	Andesitic Aegite PORPH.		
187.4	Shear Zone - 15° & 30°		
200	FELSIC TUFF.		

EDH



3378 - 100%
 3379 - 100%
 3380 - 100%
 3381 - 100%
 3382 - 100%
 3383 - 100%
 3384 - 100%
 3385 - 100%
 3386 - 100%
 3387 - 100%
 3388 - 100%
 3389 - 100%
 3390 - 100%
 3391 - 100%
 3392 - 100%
 3393 - 100%
 3394 - 100%
 3395 - 100%
 3396 - 100%
 3397 - 100%
 3398 - 100%
 3399 - 100%
 3400 - 100%

↑ 100%
 ↓ 100%
 ↓ 100%
 ↓ 100%
 ↓ 100%
 ↓ 100%
 ↓ 100%
 ↓ 100%
 ↓ 100%
 ↓ 100%
 ↓ 100%
 ↓ 100%
 ↓ 100%
 ↓ 100%
 ↓ 100%
 ↓ 100%
 ↓ 100%
 ↓ 100%
 ↓ 100%
 ↓ 100%
 ↓ 100%
 ↓ 100%

3401 - 100%
 3402 - 100%
 3403 - 100%
 3404 - 100%
 3405 - 100%
 3406 - 100%
 3407 - 100%
 3408 - 100%
 3409 - 100%
 3410 - 100%
 3411 - 100%
 3412 - 100%
 3413 - 100%
 3414 - 100%
 3415 - 100%
 3416 - 100%
 3417 - 100%
 3418 - 100%
 3419 - 100%
 3420 - 100%
 3421 - 100%
 3422 - 100%
 3423 - 100%
 3424 - 100%
 3425 - 100%
 3426 - 100%
 3427 - 100%
 3428 - 100%
 3429 - 100%
 3430 - 100%
 3431 - 100%
 3432 - 100%
 3433 - 100%
 3434 - 100%
 3435 - 100%
 3436 - 100%
 3437 - 100%
 3438 - 100%
 3439 - 100%
 3440 - 100%
 3441 - 100%
 3442 - 100%
 3443 - 100%
 3444 - 100%
 3445 - 100%
 3446 - 100%
 3447 - 100%
 3448 - 100%
 3449 - 100%
 3450 - 100%
 3451 - 100%
 3452 - 100%
 3453 - 100%
 3454 - 100%
 3455 - 100%
 3456 - 100%
 3457 - 100%
 3458 - 100%
 3459 - 100%
 3460 - 100%
 3461 - 100%
 3462 - 100%
 3463 - 100%
 3464 - 100%
 3465 - 100%
 3466 - 100%
 3467 - 100%
 3468 - 100%
 3469 - 100%
 3470 - 100%
 3471 - 100%
 3472 - 100%
 3473 - 100%
 3474 - 100%
 3475 - 100%
 3476 - 100%
 3477 - 100%
 3478 - 100%
 3479 - 100%
 3480 - 100%
 3481 - 100%
 3482 - 100%
 3483 - 100%
 3484 - 100%
 3485 - 100%
 3486 - 100%
 3487 - 100%
 3488 - 100%
 3489 - 100%
 3490 - 100%
 3491 - 100%
 3492 - 100%
 3493 - 100%
 3494 - 100%
 3495 - 100%
 3496 - 100%
 3497 - 100%
 3498 - 100%
 3499 - 100%
 3500 - 100%

STATION	MAIN VEIN EXT.	TARGET	N 180'	HOLE	Pu 11
AZIMUTH	090	DATE ST.	Nov 22/54	PEARL-UNION	
DIP	+45°	DATE FIN.		TELEPHONE LOG.	
ELEV.		TOT. FTG.		GOLD STOPS	

INTERVAL	DESCRIPTION	TOT. FTG. DATE FT.
0-1'	qtz - feldspathic welded tuff	
9.7'	dacitic tuff	
25.9'	qtz - feld welded tuff	
40.6	Dacitic tuff	
46.2	Andesite	
54.7	Dacite	
66.2	qtz - feld - welded tuff - fine gr. sharpstone	
68	cherty tuff	
74.9	qtz - feld. welded tuff	
76.2	cherty tuff	
79	qtz - feld welded tuff	
85.8	andesite Augite porphyry	
88.3	silty tuff	
91.6	qtz - feld tuff ?	
93.6	cherty tuff	
97.8	" " + qtz welded tuff	
105	dacitic welded tuff	
108	siliceous dacitic welded tuff (25-30% qtz) # 3382	
116.3	dacitic tuff	
118.4	andesite tuff	
124.3	multilithic cgl.	
125.5	cherty tuff	
134.2	andesitic tuff	
138.8	multilithic cgl.	
150.2	" "	
155.8	dacitic multilithic breccia	
159.1	" " tuff	
163.2	" " " cgl.	
167.0	silty tuff	

STATION	MAIN VEIN EXT.	TARGET	HOLE	P. U. - 11
A 31 MUM.		DATE ST.	PEARL - UNION	
DIP.		DATE FIN.	TELEPHONE LOG.	
ELEV.		TOT. FTG.	Pg. 2.	

INTERVAL		DESCRIPTION	TOT. FTG.
			DATE FT.
167-178.6		multithin cgl. (168'-178' sampled)	
184.1		dacite breccia (180.2-180.6 - qb vein, hem, Py, Zn)	
185.0		qb vein, ZnS, Py, hem	
190.4		dacite breccia, siliceous, sampled.	
191.2		qb vein, Py, hem, stringers	
192.0		dacite breccia, sil. d.	
200.7		silty tuff	
210		dacite tuff.	
		← E.O.H.	

STATION	MAIN VEIN EXT.	TARGET	GOLD STOPE	HOLE	P.W-12
A 31 MUR	050°	DATE ST.		PEARL - UNION	
DIP	+ 25°	DATE FIN.		TELEPHONE LOG.	
ELEV.	/	TOT. FTG.			

INTERVAL	DESCRIPTION	TOT. FT.	DATE FT.
0 - 3.5	qtz felsic welded tuff		
19.1	dacite tuff		
23.2	" breccia		
28.8	dacite tuff		
30.6	qtz - felsic tuff		
38	dacite tuff		
39.1	qtz - felsic tuff		
44	andesite		
47.2	dacite tuff		
51.0	qtz - felsic tuff		
63	" " welded tuff		
70	dacite tuff	} sampled	
78	qtz - felsic tuff		
79.9	qtz vein (sampled) 5/2 Py 2-3? Hm.		
82.5	qtz felsic tuff (sil) sampled		
85.5	qtz vein (60% qtz, 40% tuff frags) } Samp.		
90.4	qtz - felsic tuff		
95	andesite flow breccia		
101.2	qtz - felsic tuff (102.45 - 102.75)	qtz vein	
154.5	multilitic breccia - cgl.		
173.9	dacite breccia		
184.4	qtz felsic welded tuff		
197.4	" " <u>wt</u> "		
199.0	- <u>Dacite tuff + felsic tuff.</u>		

E.O.H

Nov 28

- 135- 140' feet

- 2

shipped everything up to

- 12 + 13 - today

- 10 + 11 - shipped weekend.

- Requisite Log. Sheets.

- Mail

- Boundary News! — Teng Sim Lai

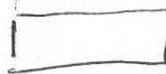
- Gazette

STATION	MAIN VEIN EXT.	TARGET	GOLD STOPS	HOLE	pu-13
AZIMUTH	315°	DATE ST.		PEARL-UNION	
DIP	+45°	DATE FIN.		TELEPHONE LOG.	
ELEV.	/	TOT. FTG.			

INTERVAL	DESCRIPTION	TOT. FTG.	DATE FT.
0 - 17.	qtz felsic welded tuff QFWT.		
31.3	Dacite tuff + QFWT		
38.3	QFWT.		
40.5	Dacite tuff		
59.7	QFWT		
70	Dacite tuff + QFWT		
73.2	Dacite tuff		
76.0	welded " "		
79.5	Dacite tuff		
90.7	Mulhletter breccia - cgl.		
100.0	QFWT		
116.6	Mulhletter pebble cgl.		
127.4	dusty tuff breccia		
146.9	andesite		
157.5	Dacite tuff		
163	Mulhletter cgl		
179.4	Dacitic breccia agglomerate		
191.9	Mulhletter brecc + dacite tuff		
196.6	Dacite tuff		
197.8	QFWT.		
198.5	Qtz vein, 2-3% S ² , ep. kem. ZnS (S)		
200.0	sil'd dacite tuff (sam)		
200.5	Qtz vein (sam) 8% py. kem, ep., ZnS		
211.4	Dacite tuff		
212.8	Mulhletter tuff		
214	Dacite tuff		

more S²

{



STATION	MAIN VEIN EXT.	TARGET	GOLD STOPE.	HOLE	Pu-14
AZIMUTH	315°	DATE ST.		PEARL-UNION	
DIP	+25°	DATE FIN.		TELEPHONE LOG.	
ELEV.	/	TOT. FTG.			

INTERVAL	DESCRIPTION	TOT. FTG.	DATE FT.
0-21.8	Dacite		
30.6	Mult. Brecc.		
35.0	And. Tuff		
53.	Mult. cgl.		
66.	Dacite Tuff + QF Tuff		
86.8	Dacite Tuff		
104.5	Dacite agglom.		
120.0	Q F. well Tuff		
129.6	Q Fel. Tuff		
133.5	Dacite		
142.4	Q. Fel Tuff.		
148.2	Dacite		
149.2	Q Fel. pebbles cgl		
163	Dacite		
173.3	" Breccia		
182	Dacite		
189.1	Andesite		
194.3	Q. Fel. Tuff		
195.8	And		
196-204 } 198.6	Q Fel. Tuff (sampled)	3410	
200.6	Qtz vein 2-3% Py, locally kfs, chl, zns? 2% Hem., to Chalco		
213	Q. Fel Tuff (200.6-204 - #3412)		

E.O.H.

N 100 68.984

E 83 97.791

Elev 2813.98

— Hole 15- 100 Feet.

- Lost two drillers
90-100' / day average

— 4 hr / day
- 2000
- 20 hr. +

48
30 Feet

80 Feet / day.

170 Feet to



STATION	MAIN VEIN EXT.	TARGET	GOLD STOPE	HOLE	PU-15
AZIMUTH	000°	DATE ST.	DEC 3rd.	PEARL-UNION	
DIP	-29.76°	DATE FIN.		TELEPHONE LOG.	
ELEV.	2813.98'	TOT. FTG.			

INTERVAL	DESCRIPTION	TOT. FTG. DATE FT.
0-6	Multilithic tuff breccia	
-22.2	Qtzose felsic tuff + dacite	
-27.8	" Dacite Tuff.	
-40.3	Dacite	
-58	Qtzose felsic tuff.	
-68.3	" " "	
-82	Andesite	
-95	Multilithic breccia	
-120.8	Dacite	
-125	Qtzose felsic tuff.	
-128.4	Dacite	
-132.6	Qtzose felsic tuff.	
-187.7	Multi Lithic Breccia	
-191.7	Dacite	
-210	Multi Lithic Breccia	
-213	Dacite	
213 - 218	Multi Lithic Breccia	
248	End of Hole	
	Comments:	
	No Vein Intersected	
	No major faults Intersected	
	Moving to Pelphin Zone	
	PV.	

1000
60,000

2 holes shaft stage
1000

end of Nov. - \$1200 feet.

Pu-16

50'

Pu-16

25.9 - 30.9

9 1/2 vein.

- poss. Au gold stage

4.0 feet.

- 5' Zn
- 3 x 5' as original.

faulted to fault
45 feet

Total Postage 2700 feet

- gross cost - \$92,000 to date.

Pu-16

Friday

3:20 pm -

175'

no other veins

STATION	MAIN VEIN EXT.	TARGET	HOLE	Pu-16
A 214441	330°	DATE ST.	PEARL-UNION	
DIP	+30°	DATE FIN.	TELEPHONE LOG.	
ELEV.	/	TOT. FTG.		

INTERVAL	DESCRIPTION	TOT. FTG.	DATE FT.
0-6.7	And.		
15.0	Dacite tuff		
22.5	Andesite		
25.9	Dacite Tuff.		3413
31.6	Qtz Vein]	3414-3416
51.0	Qtz felsic Tuff.		
68.0	Mulhilitic Δ breccia		
81.2	Dacite		
88.9	Dacite tuff		
99.0	"		
101.8	" Tuff		
107.0	Dacite		
108.5	Dacite tuff		
134.8	Dacite		
138.7	And. tuff		
156.5	Dacite		
163.3	Mulhilitic breccia		
169	Dacite		
174.8	" + qtz felsic Tuff		
179.8	Q. F. Tuff		
183.6	Dacite tuff		
189.7	And.		
190.3	Q. F. Tuff		
197.9	Dacite breccia		
200	And.		

STATION	MAIN VEIN EXT.	TARGET	HOLE	Pa-17
AZIMUTH	020°	DATE ST.	PEARL-UNION	
DIP	+20°	DATE FIN.	TELEPHONE LOG.	
ELEV.	2825'	TOT. FTG.		

INTERVAL	DESCRIPTION	TOT. FTG. DATE FT.
0-12	Andesite	
14.5	Dacite	
27.0	And	
28.0	Qtz vein	3420
38.2	And.	
44.8	Dacite	
50	Multistria brevia	
58	Q. F. Tuff + Dacite	
66.7	Q. F. Tuff	
69.2	Dacite	
71.7	Dacite tuff + sil + sample.	
72.9	Qtz vein, 5-86 Py, ZnS, + quartz?	3422
76.8	sil. d. Dacite	3423, 24
89.6	Dacite	
97.0	" brevia	
100	Dacite.	

E. O. H.

STATION	MAIN VEIN EXT.	TARGET	HOLE
AZIMUTH	295°	DATE ST.	PEARL-UNION
DIP	+20°	DATE FIN.	TELEPHONE LOG.
ELEV.	/	TOT. FTG.	

pu-18

INTERVAL	DESCRIPTION	TOT. FTG. DATE FT.
0-8.2	Andesite	
24.6	Dacite	
40.5	white, qtz, not vein white opaque qb + hematite + epidote, 2-5% S= Py. - silified zone - ground stream. - 70% qb, 20% epidote, 5% hem. - 60% c.H.	3425-32
50.7	Dacite	
52.5	Qtz vein, 5-6% Py, Tr-chalco, 30% c.H.	3433
56.6	Dacite Breccia, sil'd.	3434-35
64.8	Qtz vein, 5% Py, ep., Tr-chalco ZnS.	3436-38
96.4	Dacite	
100	Q.F. Tuff	
101.4	Dacite, minor qtz veinlet	3439
105.6	Qtz vein 8-10% Py, 12 hem.	3440-42
110.0	Q.F. Tuff	
114	Dacite	
119.6	Q.F. Tuff	
130.1	Dacite Tuff	
132	Q.F. Tuff	
140.4	Dacite Tuff	
150	Q.F. Tuff	

E.O.H.

