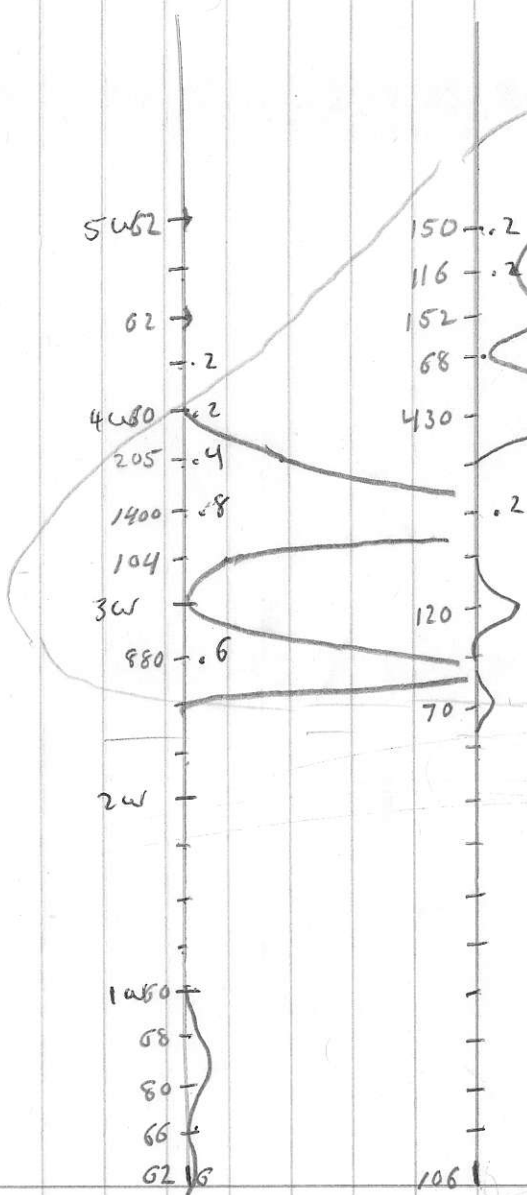


5700W

62 .2  
88  
80  
84  
78  
88 .2  
84  
86  
78  
94

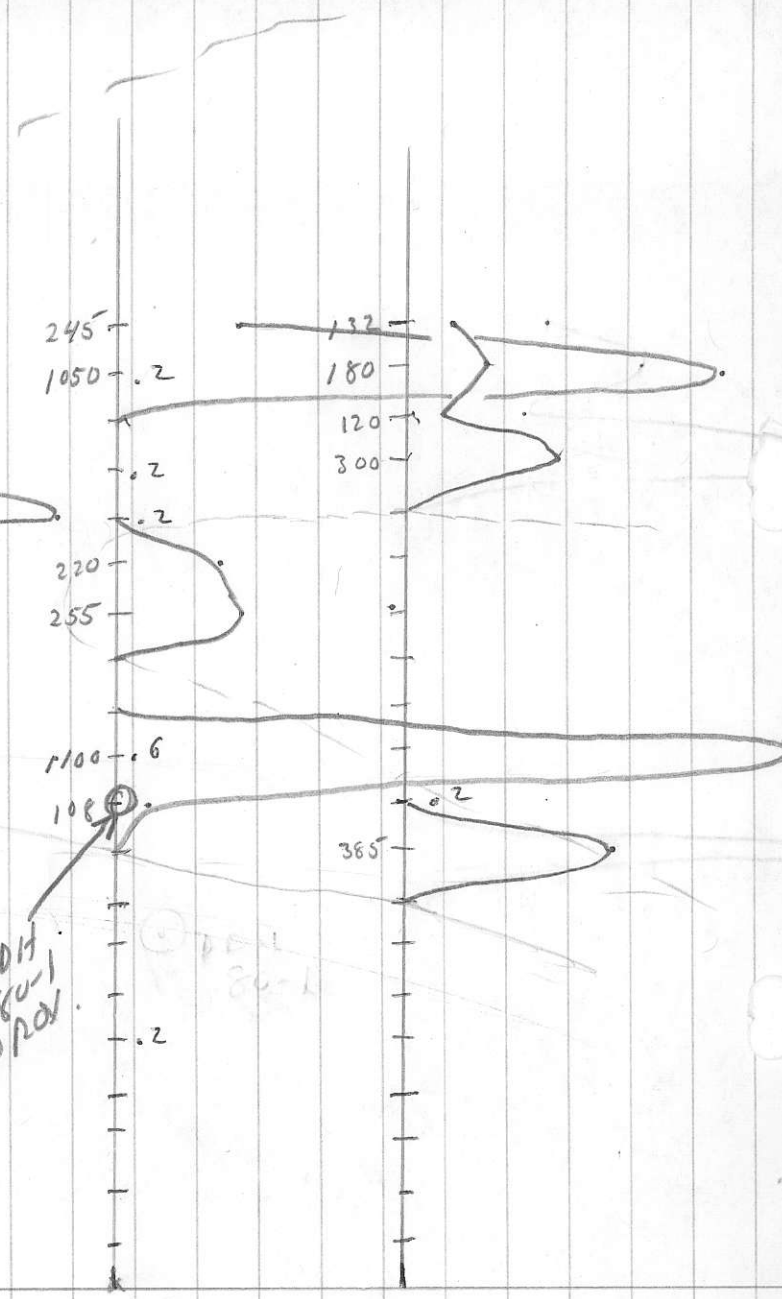
3700 S  
CU Ag

N.T.S. 92I-8W



1750 S 0

Esperanza  
92I/8W 520117



1750 N 3700 N

DOH  
80-1  
APPROX.

ANDERSON  
OPERATIONS

MAY/80