





P17 T42-81





T42 P22-81

IDAHO ZONE - CAROLIN MINE

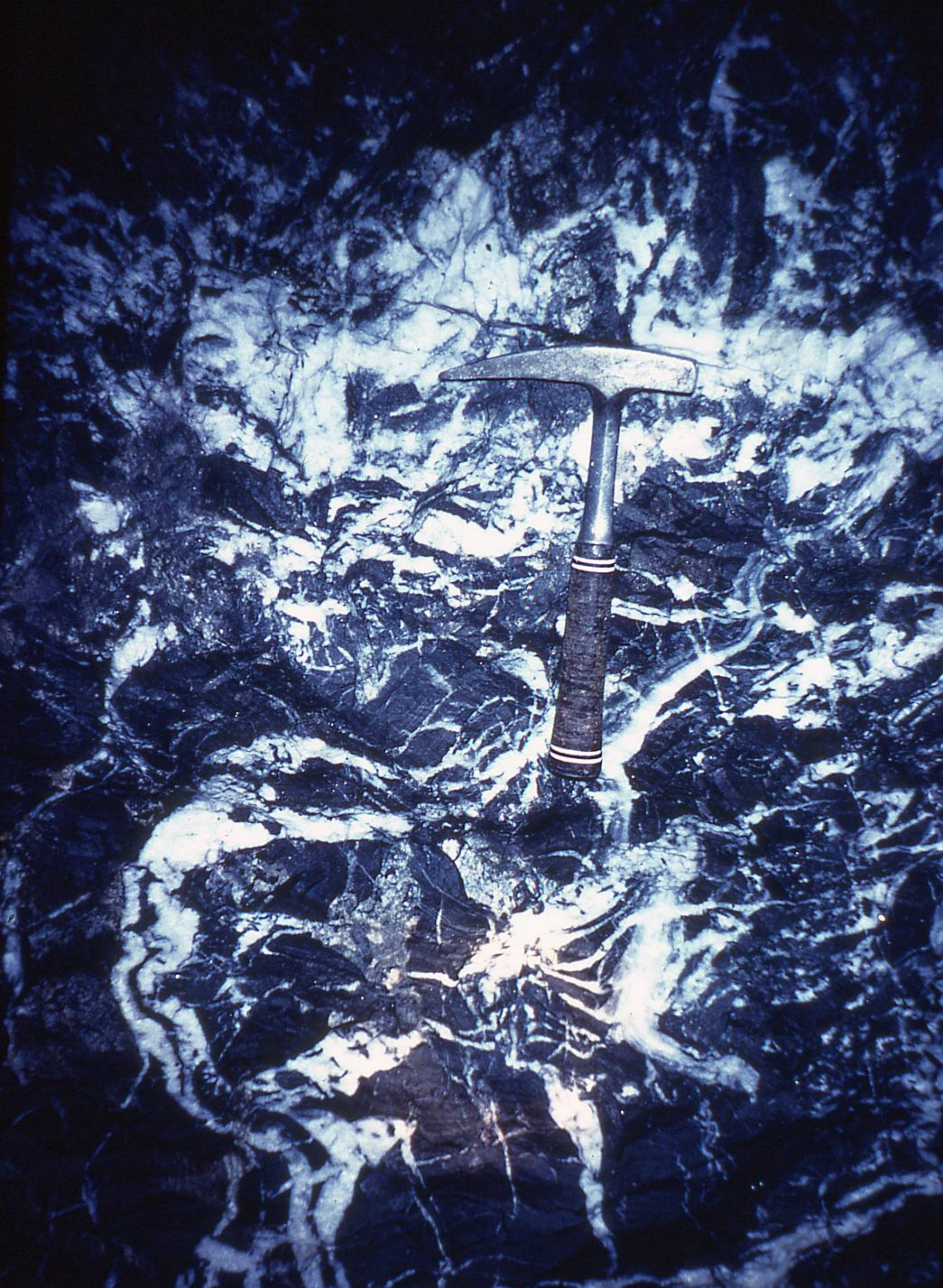
MINERALIZED WACKES
PER CENT

UNMINERALIZED
WACKE
PER CENT

SiO ₂	53.11	55.20	60.62	●	48.92
Al ₂ O ₃	14.51	12.64	15.42		14.05
Fe ₂ O ₃	1.20	7.11	0.45		0.22
FeO	7.94	2.39	3.89		6.26
MgO	1.16	0.82	0.68	●	3.30
CaO	4.49	2.66	2.37	●	9.07
Na ₂ O	7.81	7.49	9.09	●	2.45
K ₂ O	0.30	0.05	0.09	●	2.84
TiO ₂	1.22	0.33	1.00		0.83
MnO	0.11	0.06	0.07		0.13
CO ₂	3.46	2.08	2.78	●	6.85
S	3.41	3.84	1.91	●	0.12
As	1.18	6.23	0.46	●	0.007

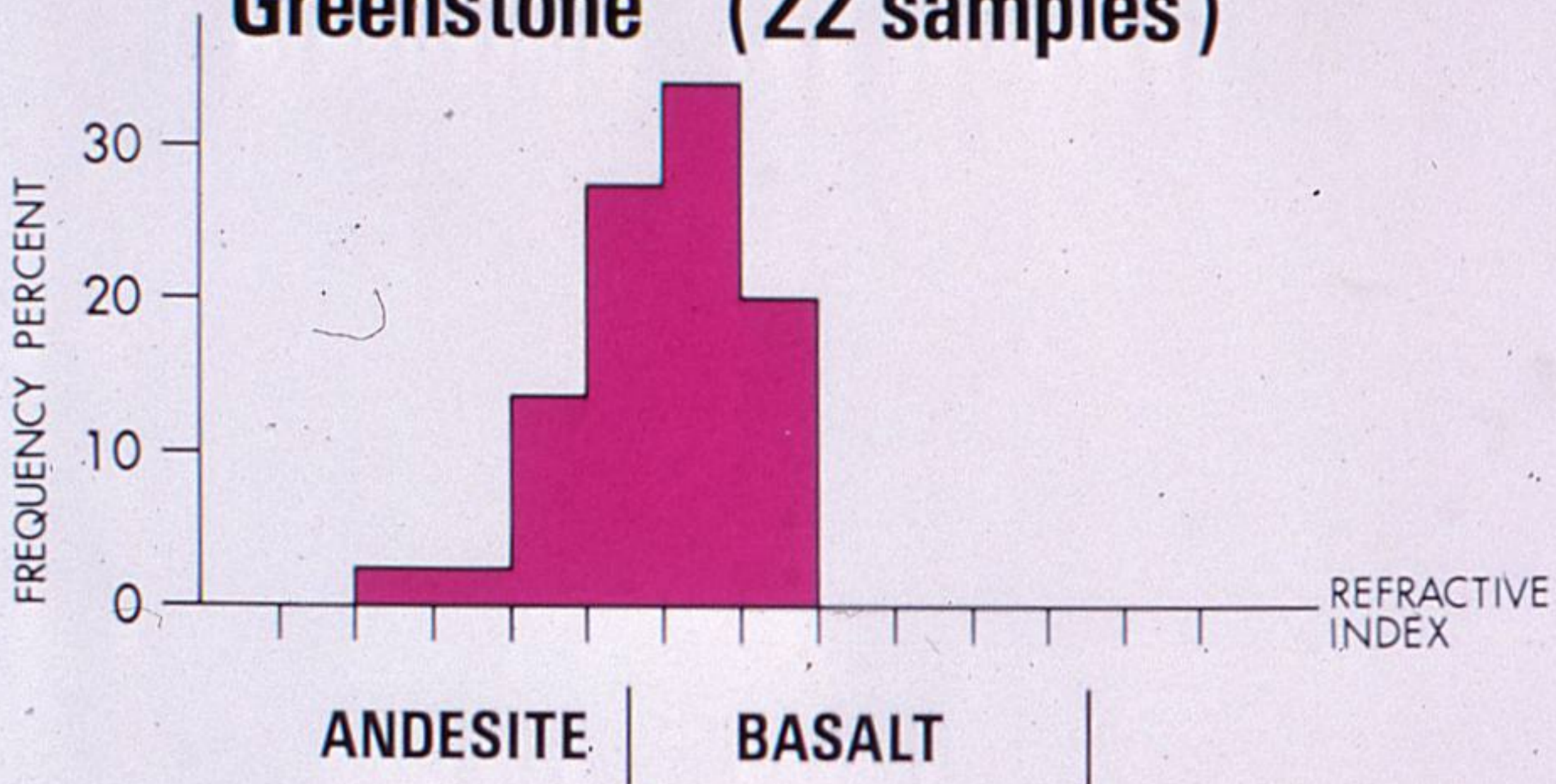


P12 T40-81

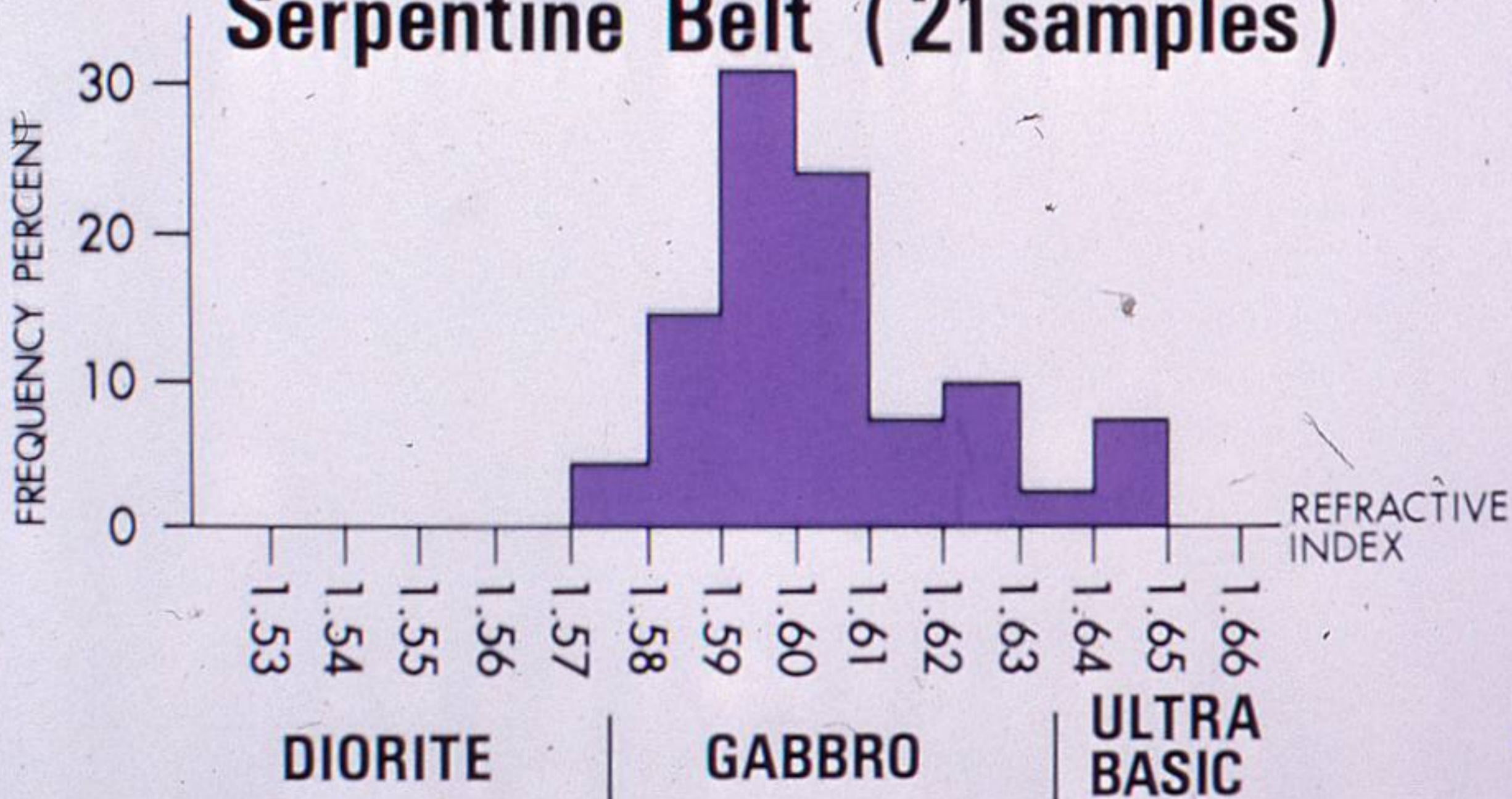




Greenstone (22 samples)



Gabbroic rocks in the Coquihalla Serpentine Belt (21 samples)





WEST

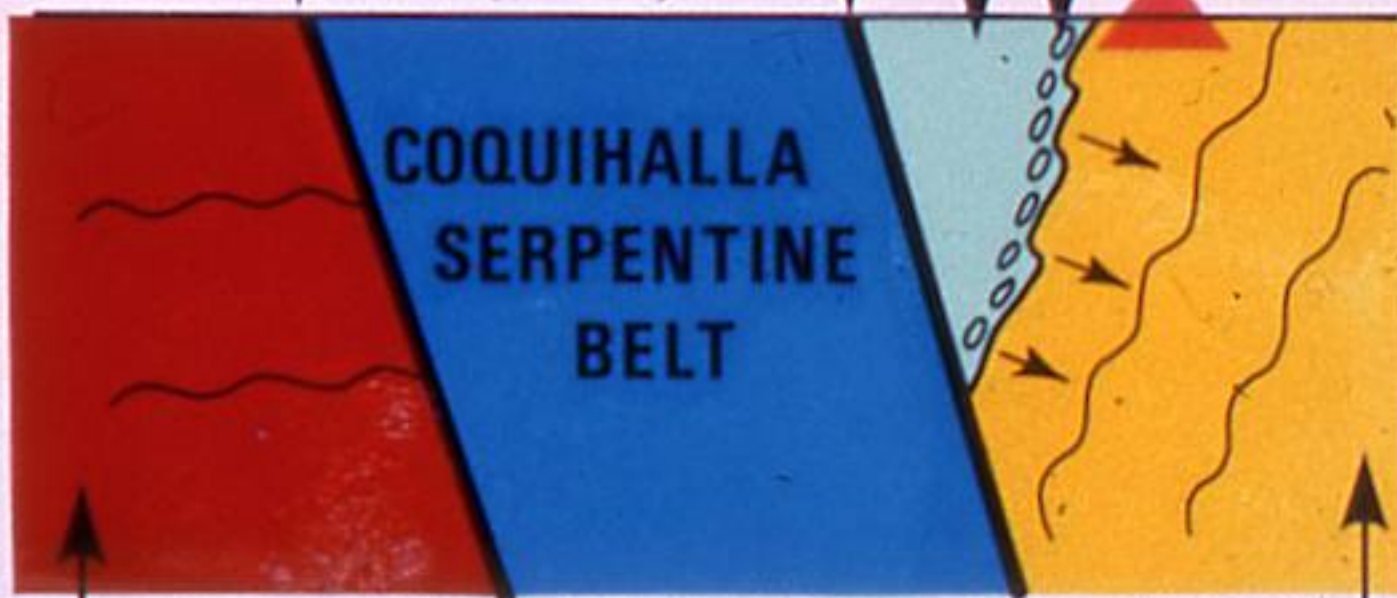
EAST

WEST HOZAMEEN FAULT

EAST HOZAMEEN FAULT

Greenstone
Pillows

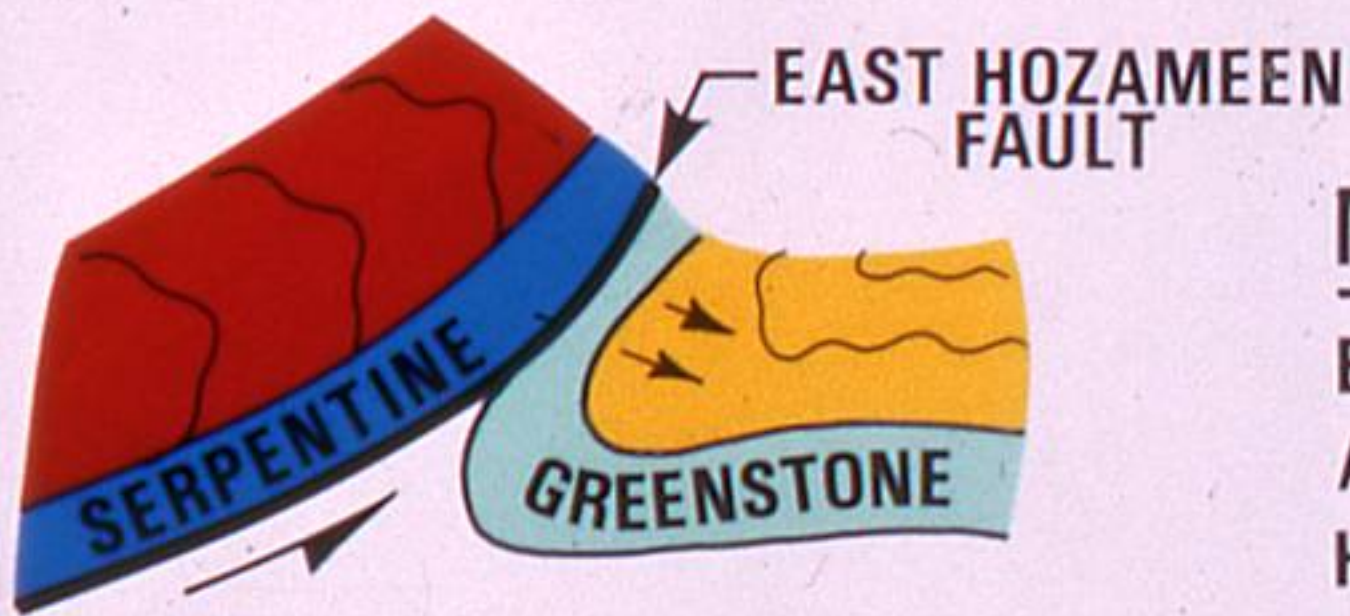
Carolin Mine



PRESENT DAY
E-W SECTION

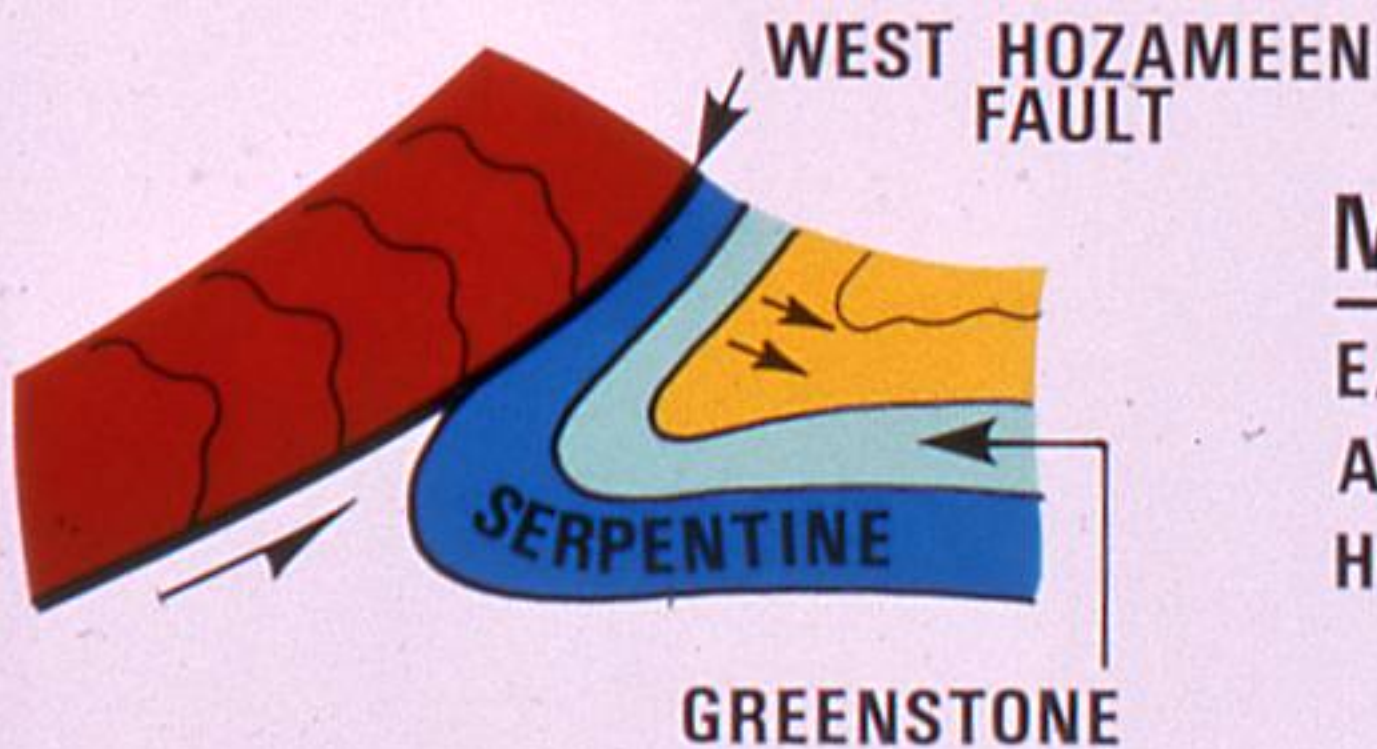
HOZAMEEN GROUP

LADNER
GROUP



MODEL 1

EASTERLY THRUSTING
ALONG THE EAST
HOZAMEEN FAULT

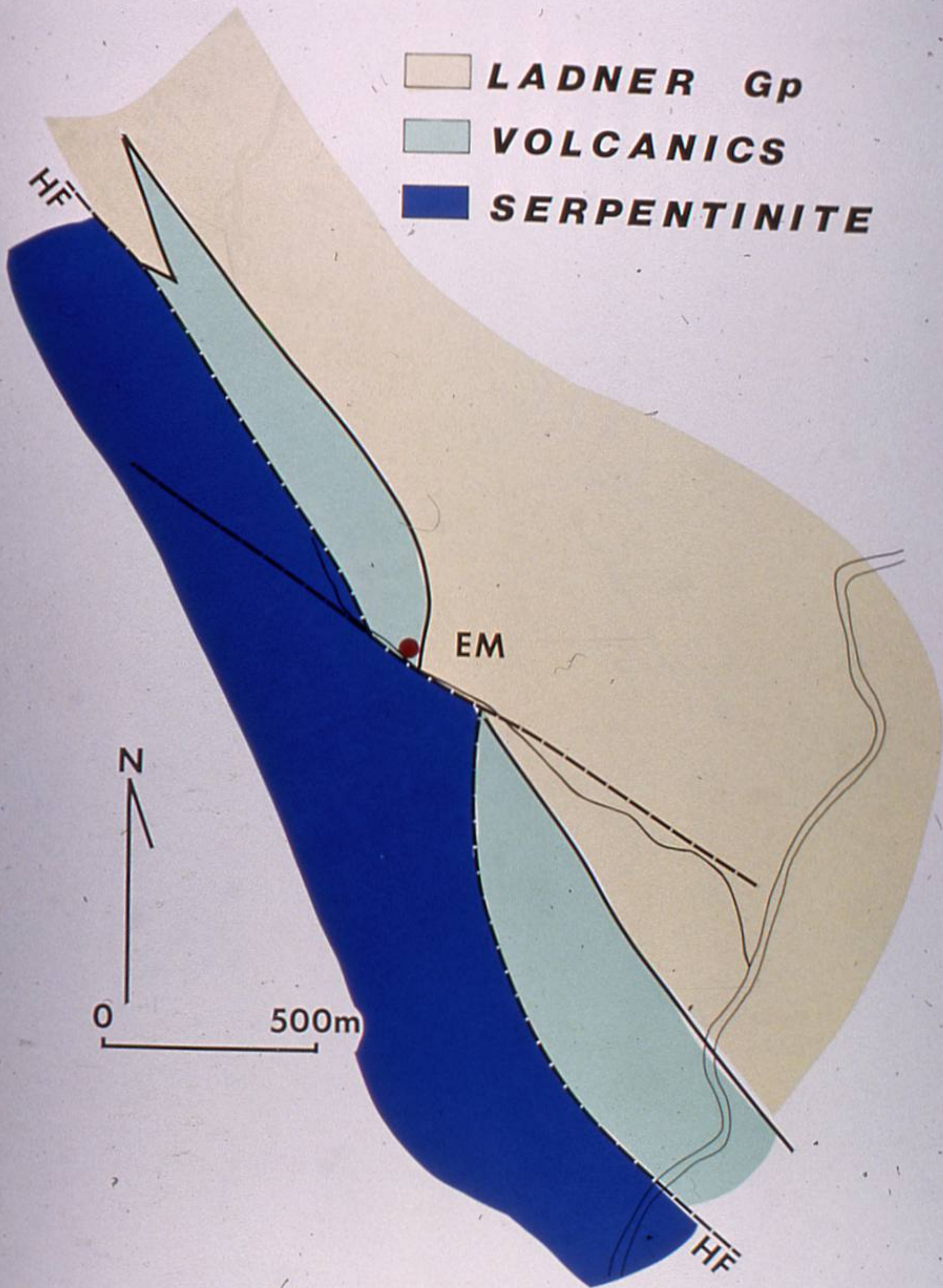


MODEL 2

EASTERLY THRUSTING
ALONG THE WEST
HOZAMEEN FAULT








EMANCIPATION MINE
Geology after Cardinal 1981

T2 P1-81





T20 PB-81



T20 P6-81





