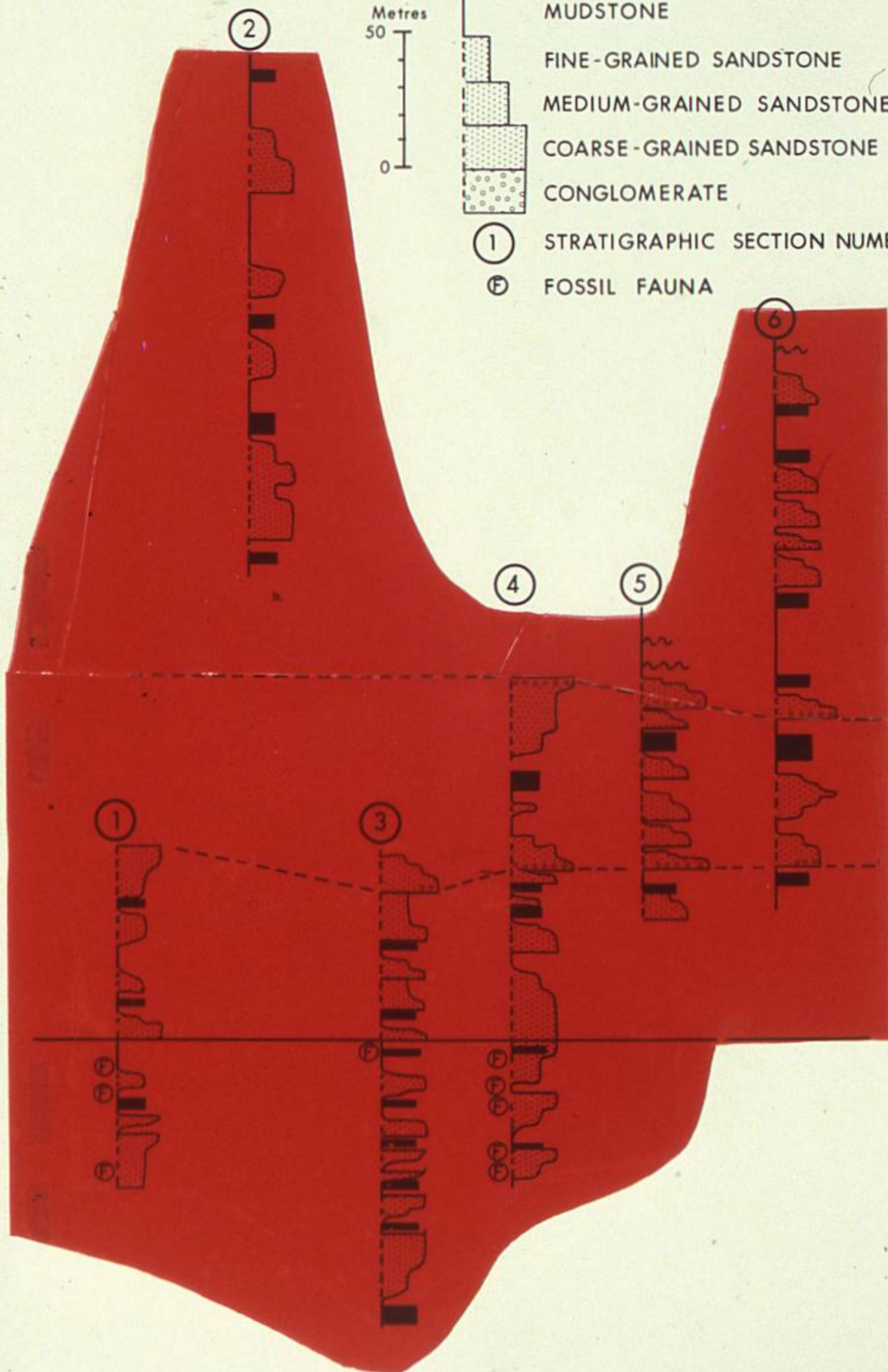
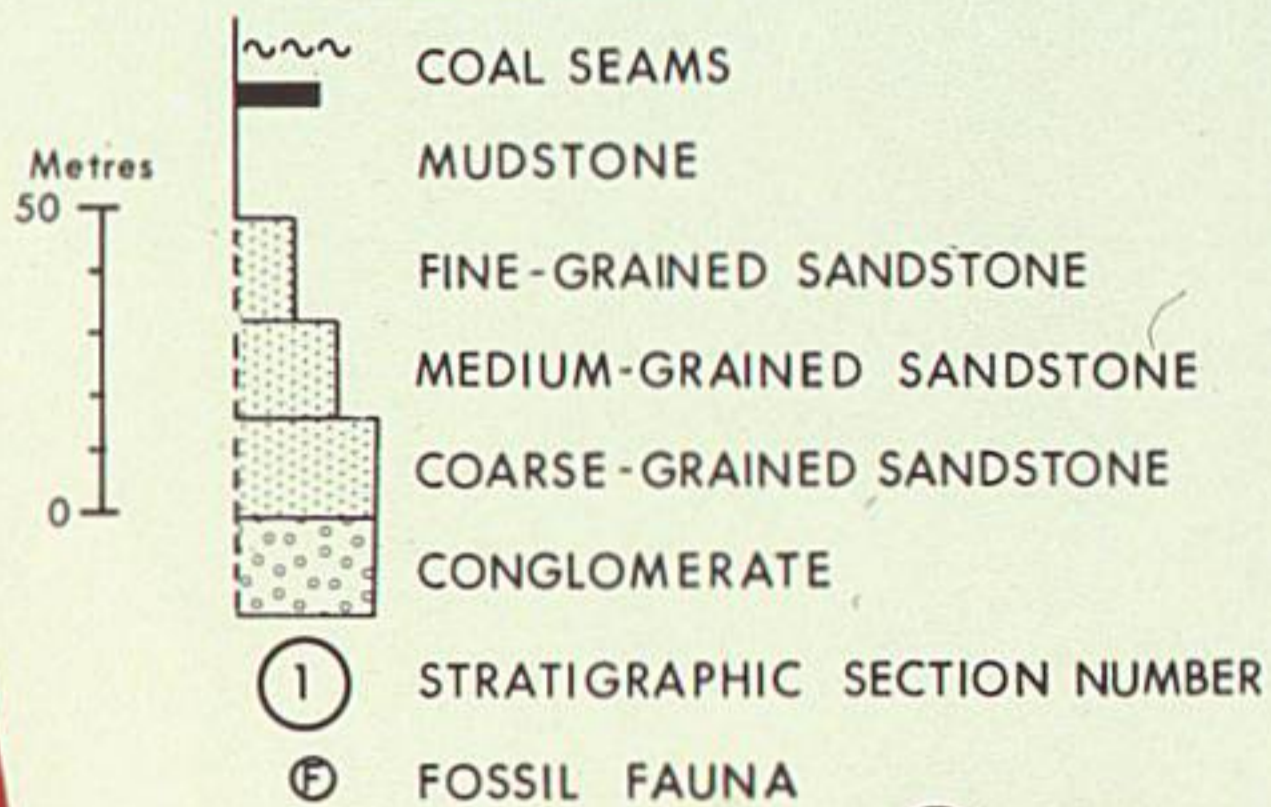


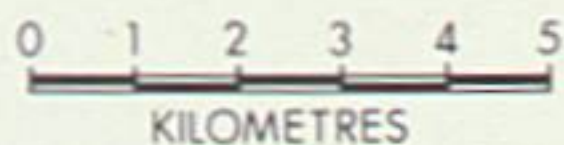
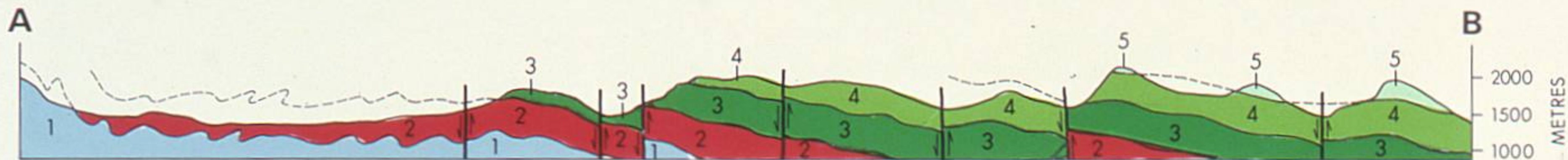
# STRATIGRAPHIC SECTIONS OF THE KLAPPAN COAL MEASURES

KLAPPAN COAL MEASURES

## LEGEND



# CROSS SECTIONS OF THE MT. KLAPPAN AREA



## LEGEND

### MOUNT KLAPPAN SUCCESSION

#### EARLY TO LATE CRETACEOUS

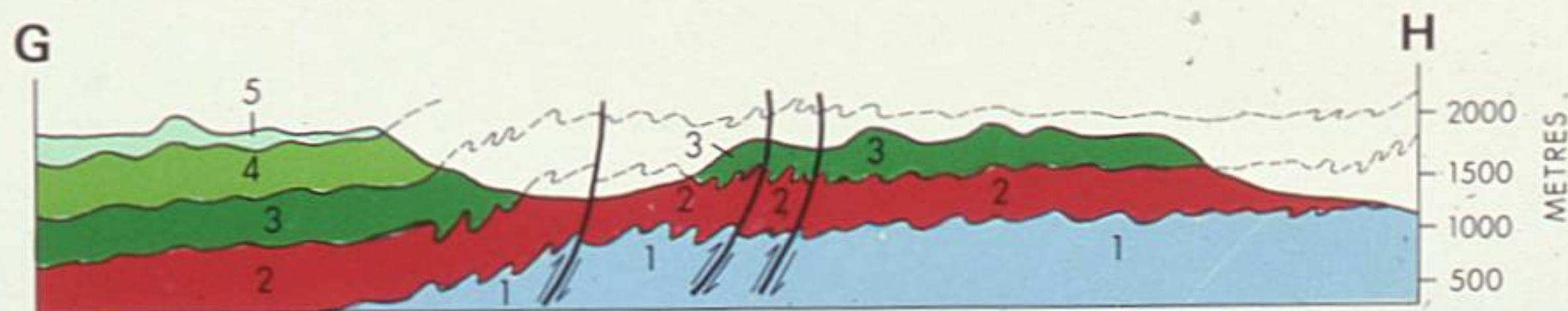
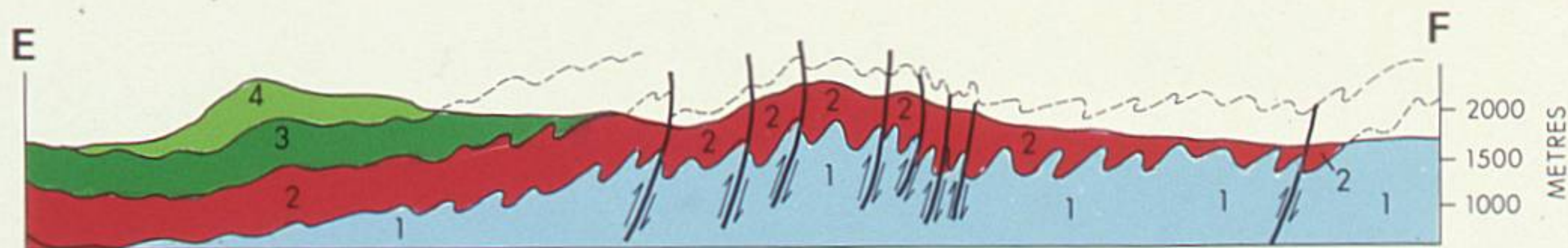
- 5 UNIT 5
- 4 UNIT 4
- 3 UNIT 3

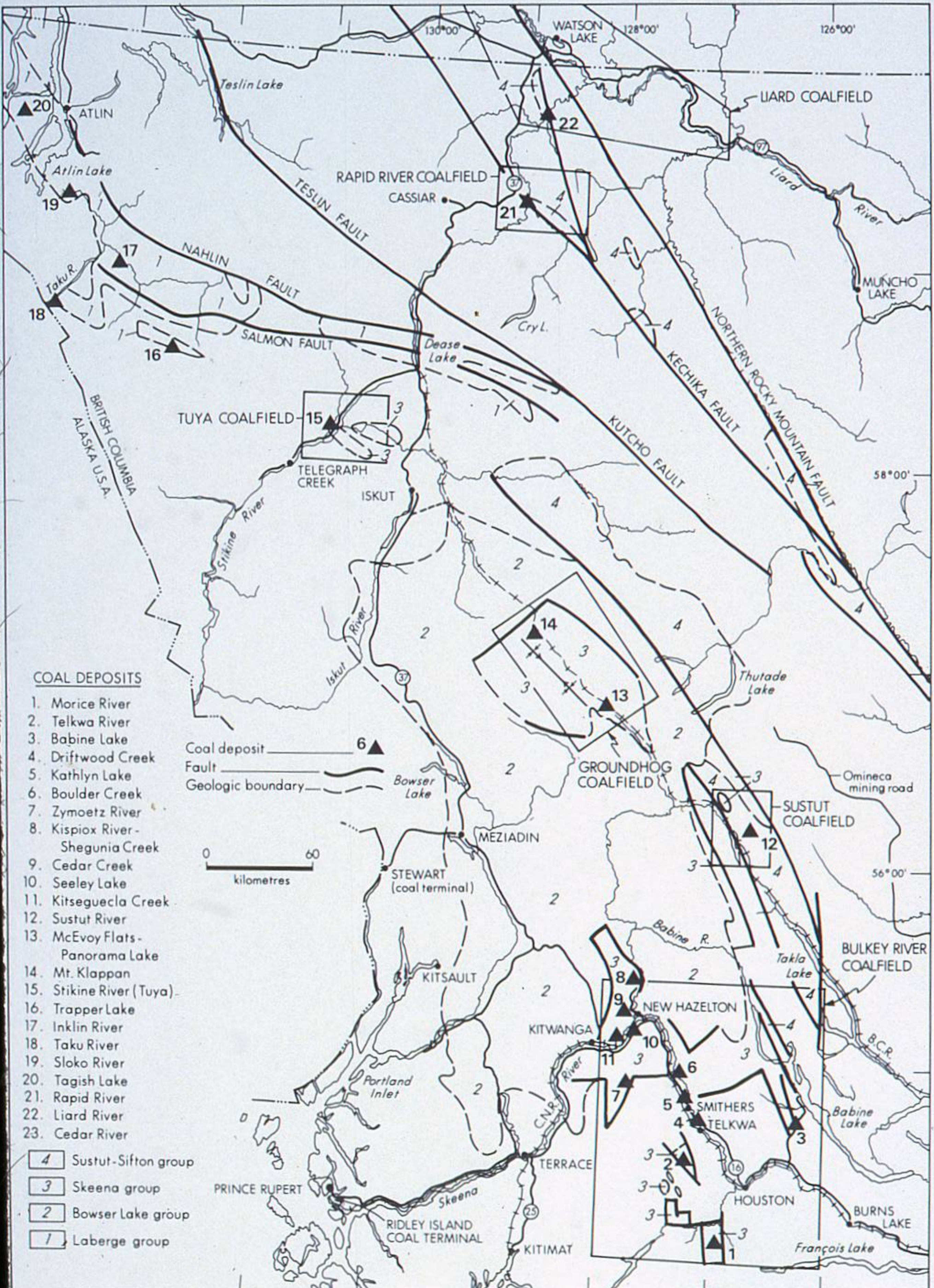
#### LATE JURASSIC TO EARLY CRETACEOUS

- 2 UNIT 2 (COAL SEQUENCE)

#### LATE JURASSIC

- 1 UNIT 1





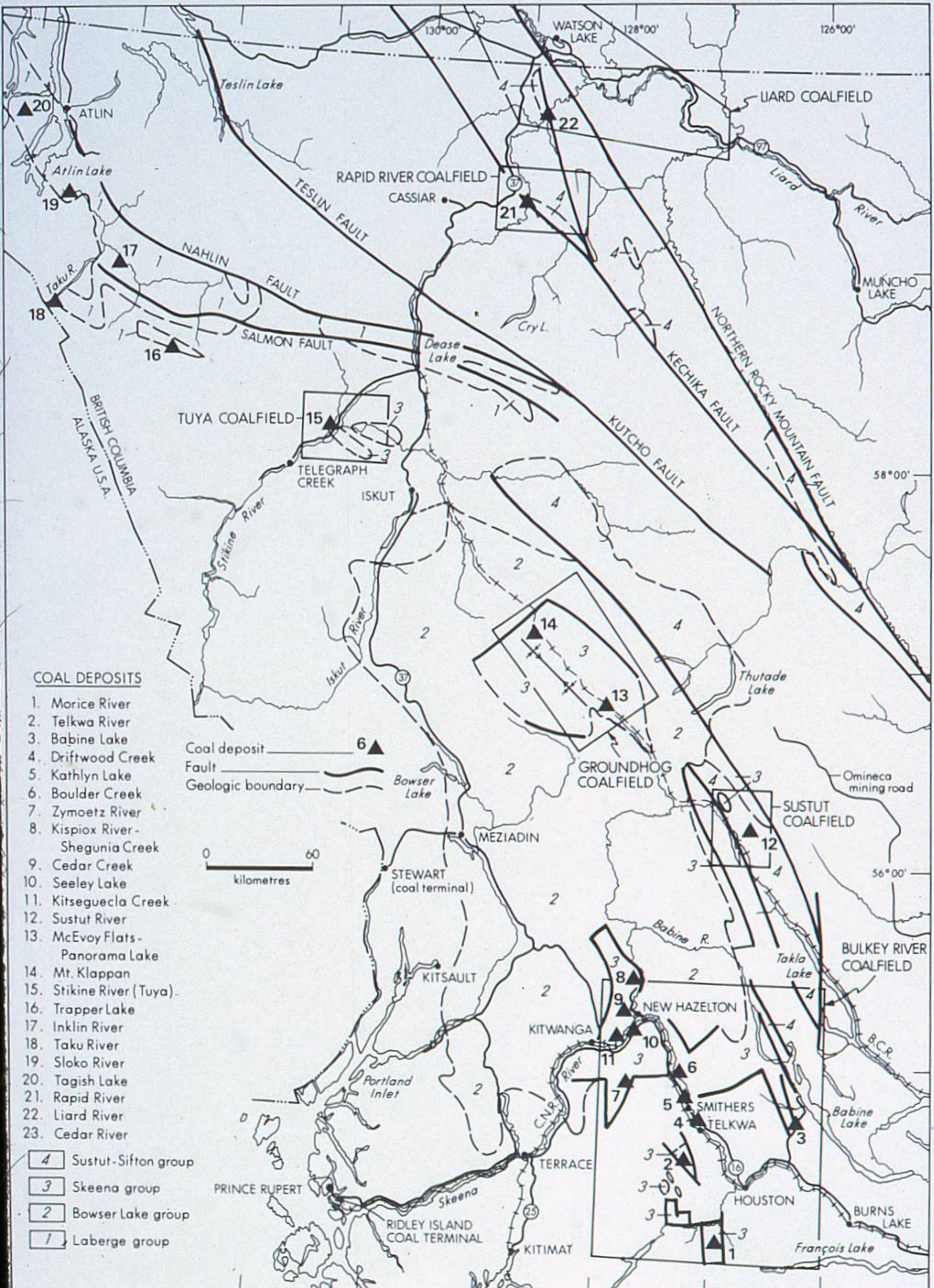
**COAL DEPOSITS**

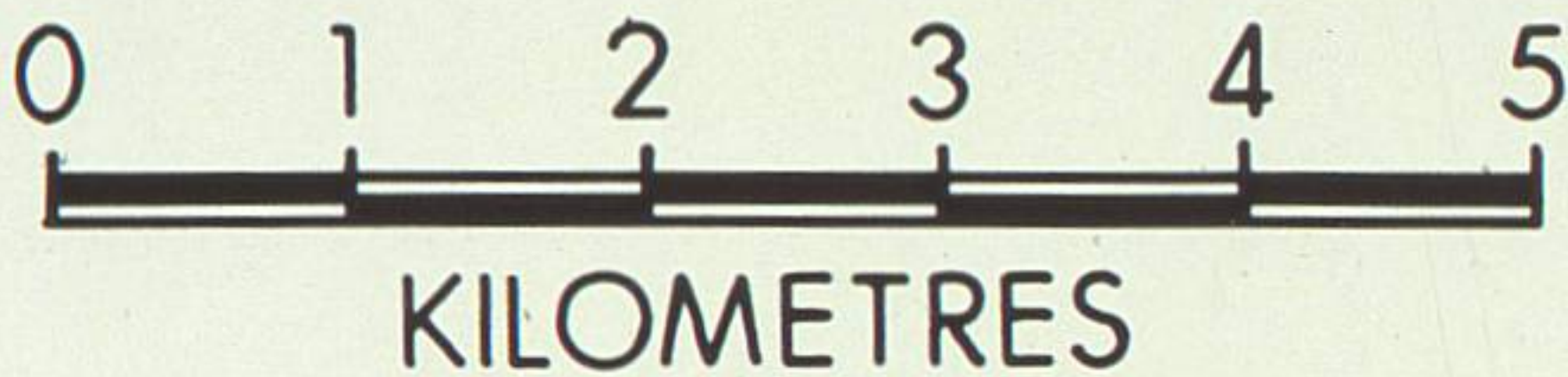
1. Morice River
2. Telkwa River
3. Babine Lake
4. Driftwood Creek
5. Kathlyn Lake
6. Boulder Creek
7. Zymoetz River
8. Kispiox River - Shegunia Creek
9. Cedar Creek
10. Seeley Lake
11. Kitsequecla Creek
12. Sustut River
13. McEvoy Flats - Panorama Lake
14. Mt. Klappan
15. Stikine River (Tuya)
16. Trapper Lake
17. Inklin River
18. Taku River
19. Sloko River
20. Tagish Lake
21. Rapid River
22. Liard River
23. Cedar River

- 4 Sustut-Sifton group
- 3 Skeena group
- 2 Bowser Lake group
- 1 Laberge group

Coal deposit 6  
 Fault   
 Geologic boundary

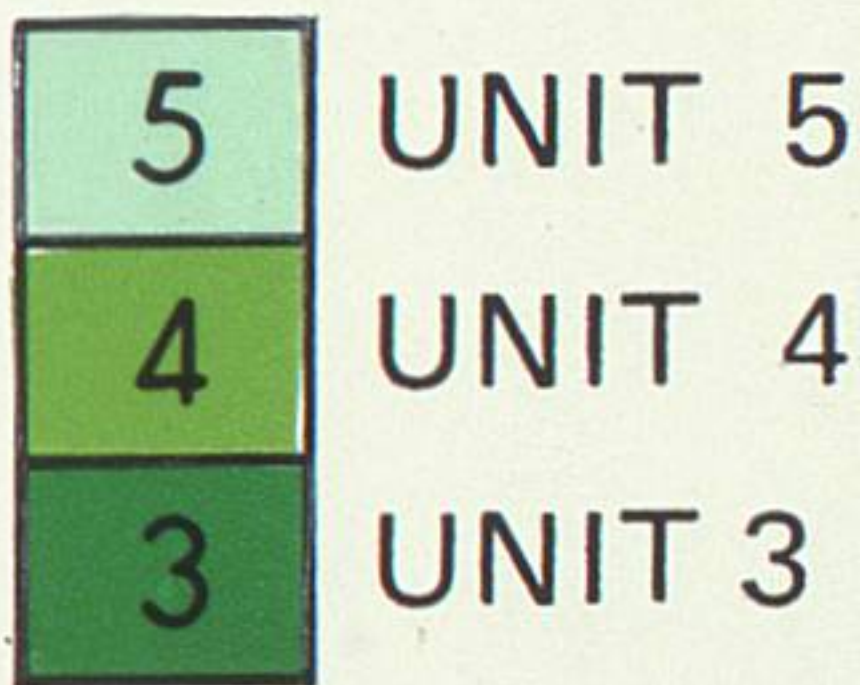
0 60  
 kilometres





## LEGEND

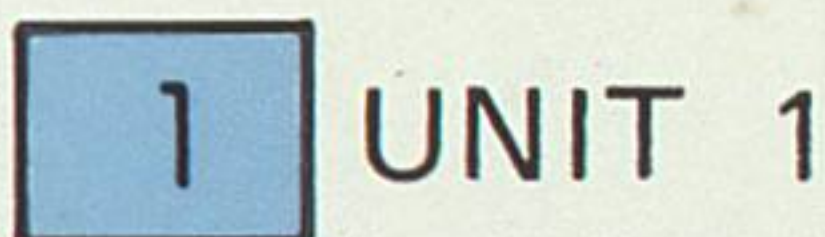
### MOUNT KLAPPAN SUCCESSION EARLY TO LATE CRETACEOUS



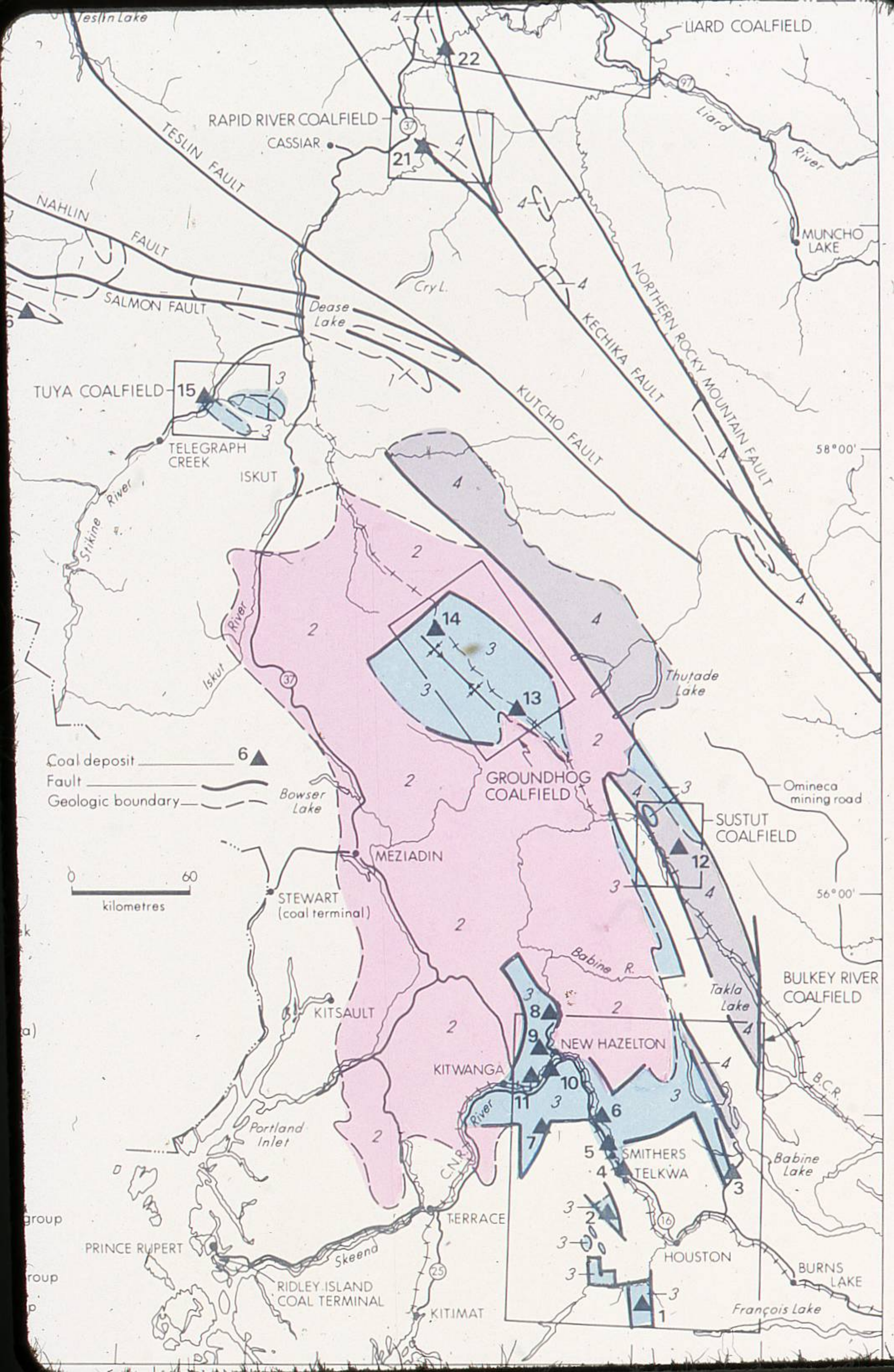
### LATE JURASSIC TO EARLY CRETACEOUS

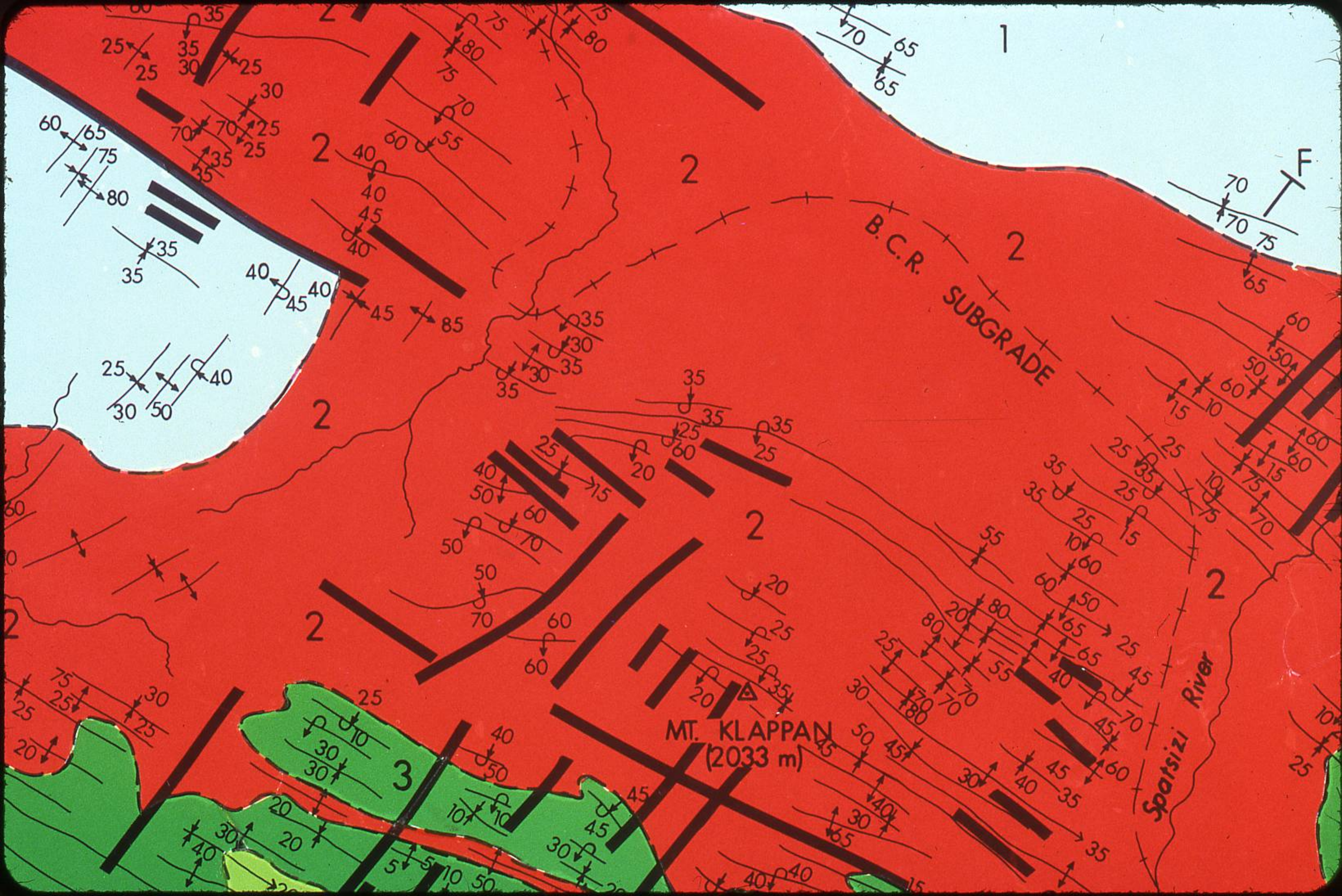


### LATE JURASSIC





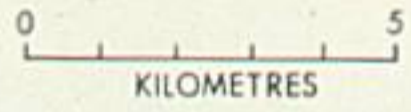




# GEOLOGY OF THE MT. KLAPPAN AREA



- EARLY TO LATE CRETACEOUS
- 5 UNIT 5
  - 4 UNIT 4
  - 3 UNIT 3
- LATE JURASSIC TO EARLY CRETACEOUS
- 2 UNIT 2 (COAL SEQUENCE)
- LATE JURASSIC
- 1 UNIT 1

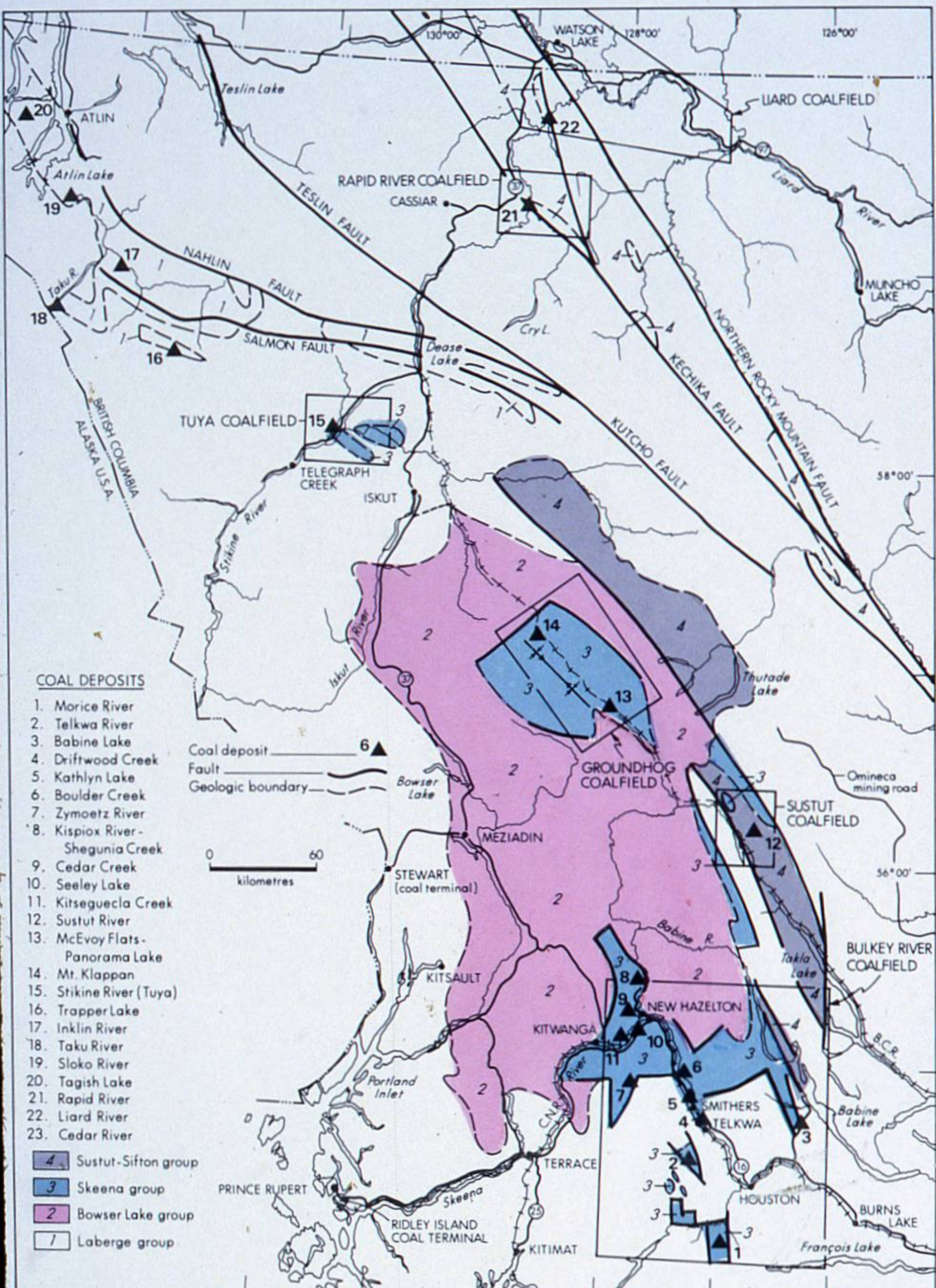


- SYMBOLS
- GEOLOGICAL BOUNDARY ..... - - - -
  - GEOLOGICAL CROSS SECTION ... A|---|B
  - ANTICLINE, OVERTURNED ..... + - - - - +
  - SYNCLINE, OVERTURNED ..... - - - - - +
  - PLUNGE ..... - - - - - >
  - FAULT ..... ————



# GEOLOGY OF THE MT. KLAPPAN AREA





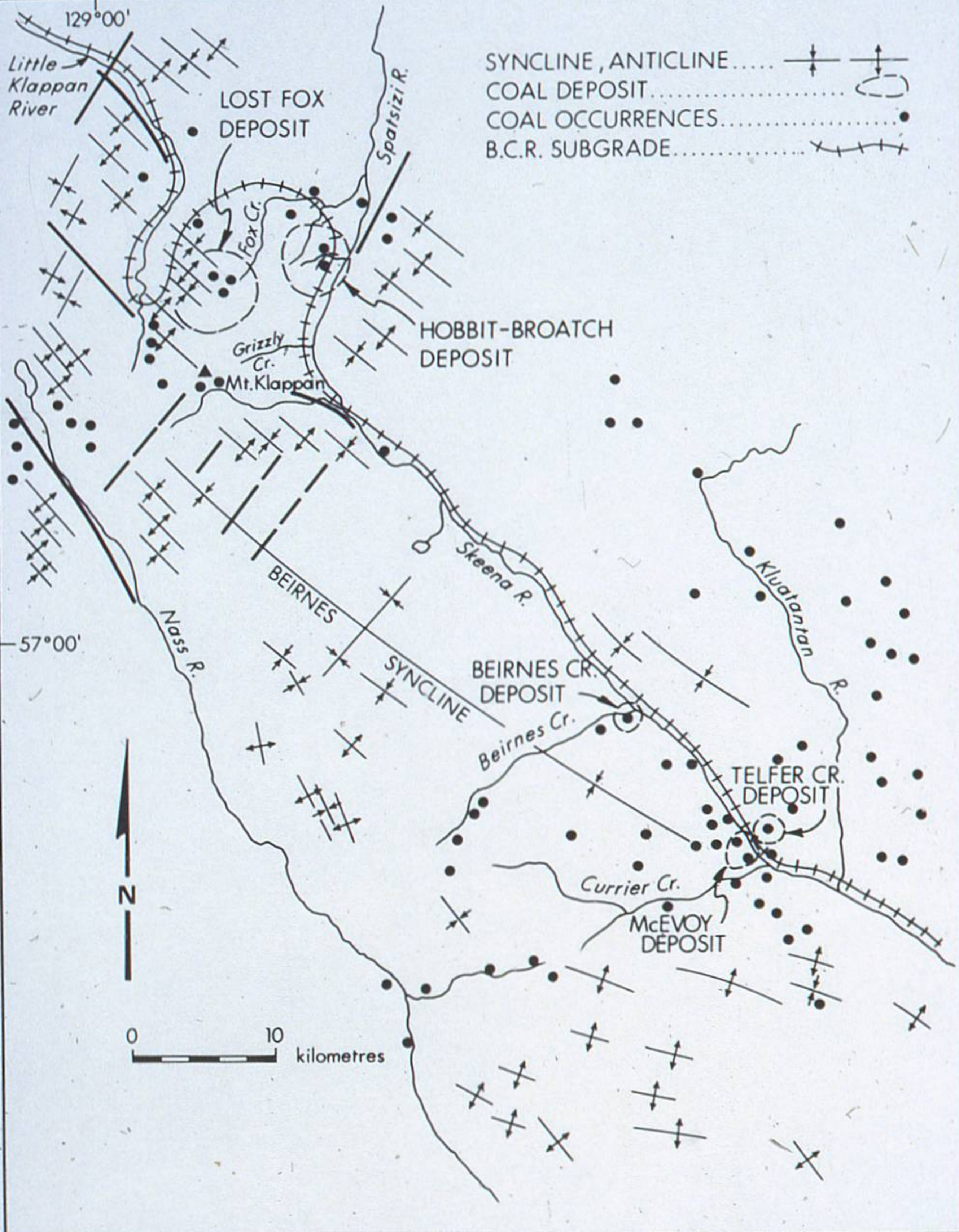
**COAL DEPOSITS**

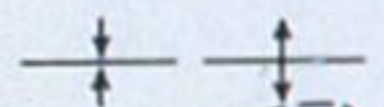



1. Morice River
2. Telkwa River
3. Babine Lake
4. Driftwood Creek
5. Kathlyn Lake
6. Boulder Creek
7. Zymoetz River
8. Kispiox River - Shegunia Creek
9. Cedar Creek
10. Seeley Lake
11. Kitsequecla Creek
12. Sustut River
13. McEvoy Flats - Panorama Lake
14. Mt. Klappan
15. Stikine River (Tuya)
16. Trapper Lake
17. Inklin River
18. Taku River
19. Sloko River
20. Tagish Lake
21. Rapid River
22. Liard River
23. Cedar River

- 4 Sustut-Sifton group
- 3 Skeena group
- 2 Bowser Lake group
- 1 Laberge group

Coal deposit 6  
 Fault   
 Geologic boundary

0 60  
 kilometres



SYNCLINE, ANTICLINE.....   
COAL DEPOSIT.....   
COAL OCCURRENCES.....   
B.C.R. SUBGRADE..... 

129°00'  
Little Klappan River

LOST FOX DEPOSIT

Spatsizi R.

Fox Cr.

HOBBIT-BROATCH DEPOSIT

Grizzly Cr.  
Mt. Klappan

57°00'

Nass R.

BEIRNES

Skeena R.

BEIRNES CR. DEPOSIT

SYNCLINE

Beirnes Cr.

TELFER CR. DEPOSIT

Klattan R.

Currier Cr.

McEVOY DEPOSIT



0 10 kilometres

