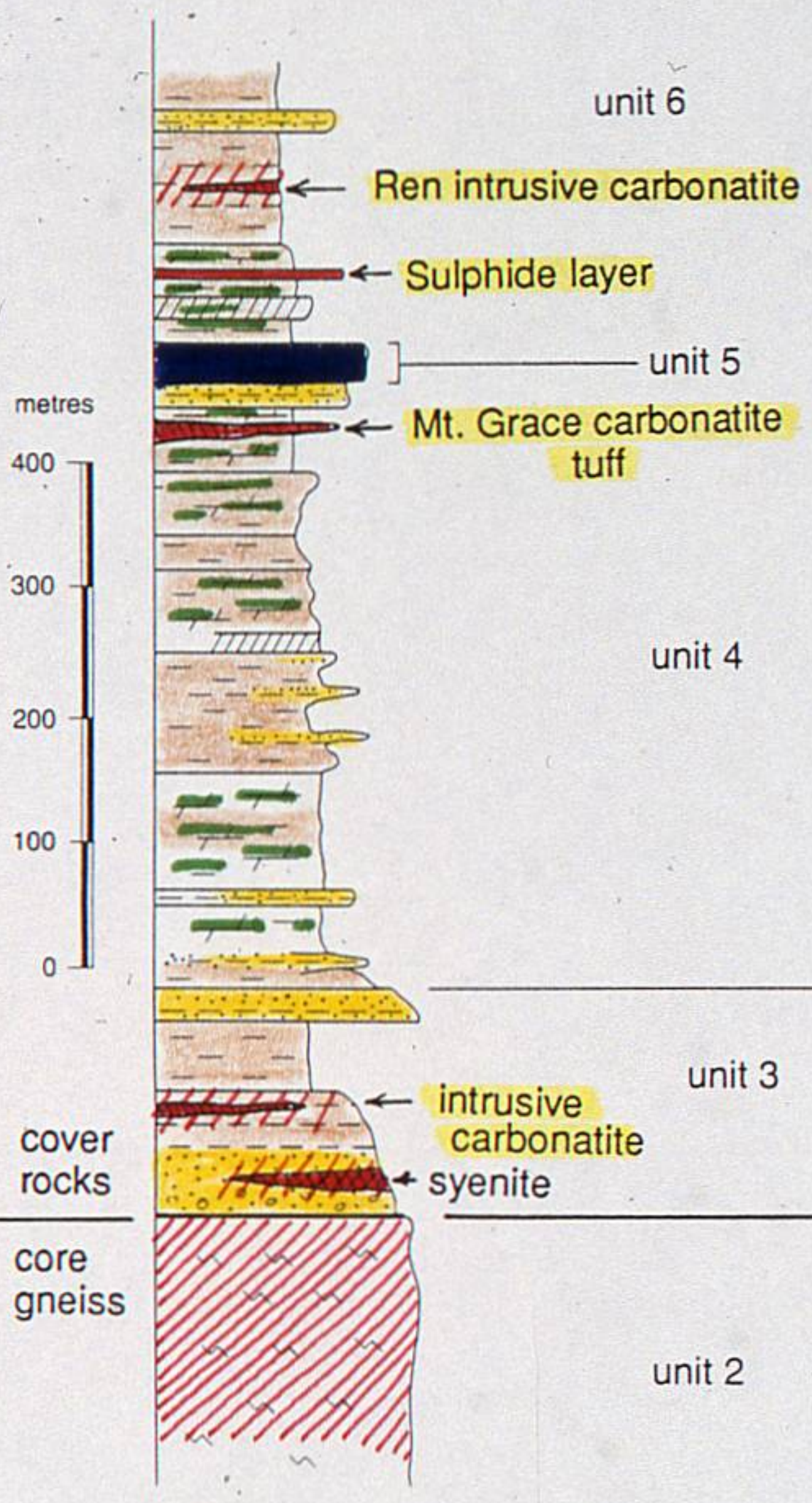
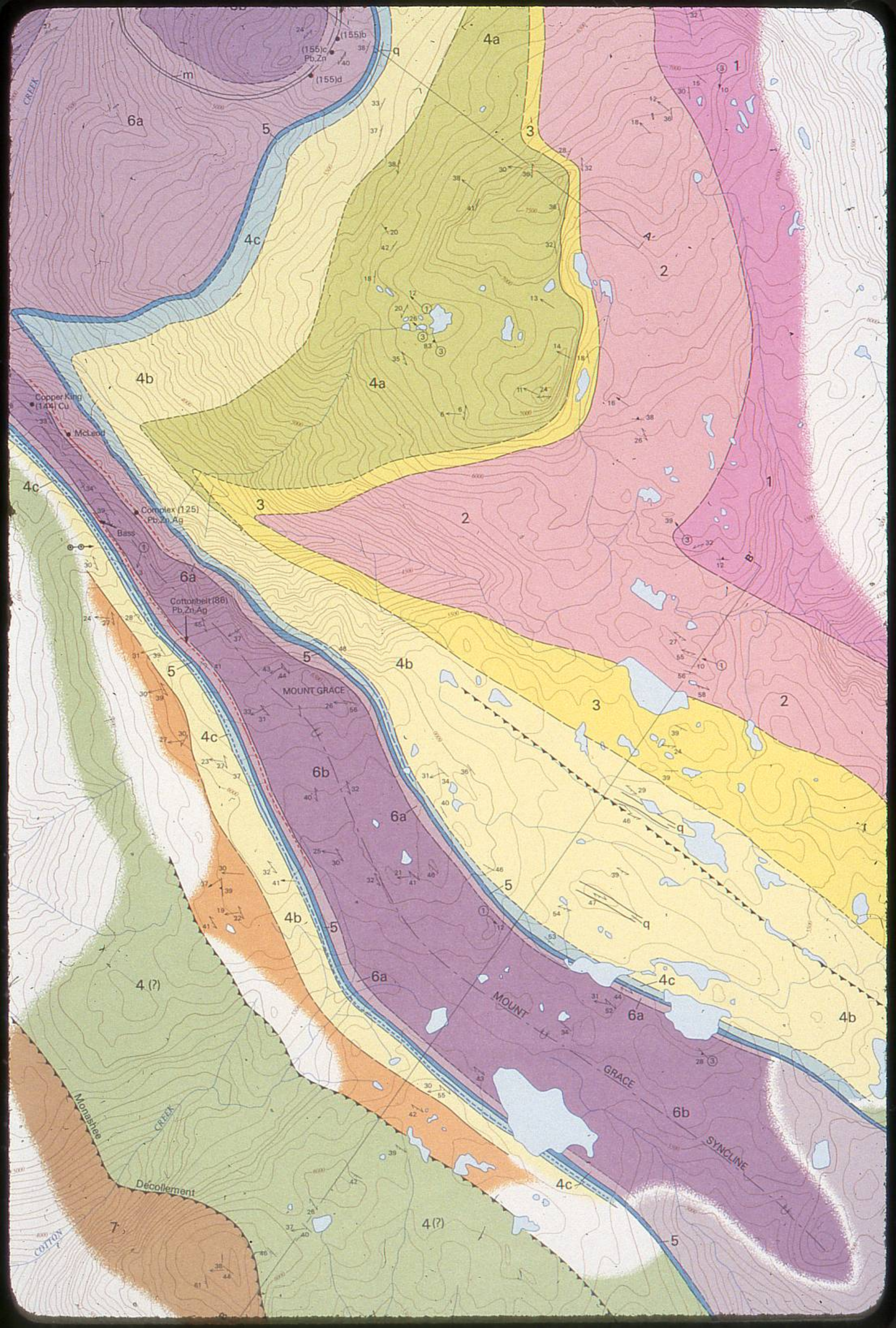


METRES
BELOW
SURFACE

FRENCHMAN CAP -COVER SUCCESSION



	calcite marble
	impure marble
	calc-silicate gneiss
	pelitic schist
	quartzite
	quartz-feldspar gneiss



MINFILE NUMBER	NAME	MINERALOGY	DEPOSIT TYPE
086	Cottonbelt	sph, gln, mag, po	Stratabound - massive
125	Complex/McLeod	sph, gln, mag, po	Stratabound - massive
144	Copper King	cpy	Stratabound - disseminated
153	Blais	gln	Stratabound - disseminated
155	Seymour	cpy, gln, sph, may	Stratabound - disseminated
200	D & R	mo	Disseminated
	Bass	sph, gln, may, po	Stratabound - massive
240	New Occurrence	cpy, po	Disseminated
241	New Occurrence	cpy, po	Pods - disseminated
242	New Occurrence	cpy, mag	Disseminated

sph - sphalerite; gln - galena; mag - magnetite; po - pyrrhotite; cpy - chalcopyrite; mo - molybdenite



FRENCHMAN CAP DOME

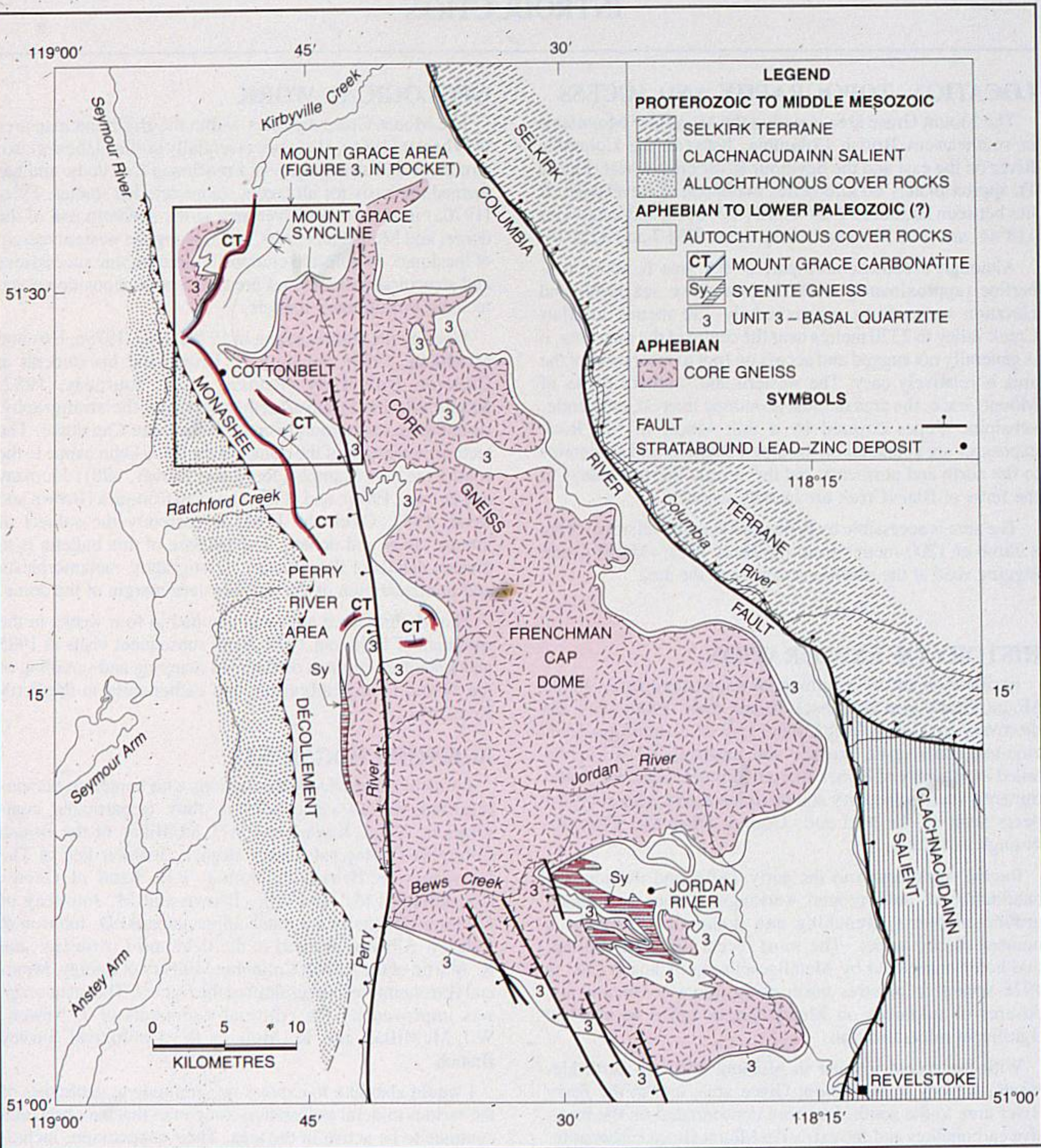


Figure 2. Geological map of Frenchman Cap dome showing distribution of structural and tectonic elements and lithologic units.

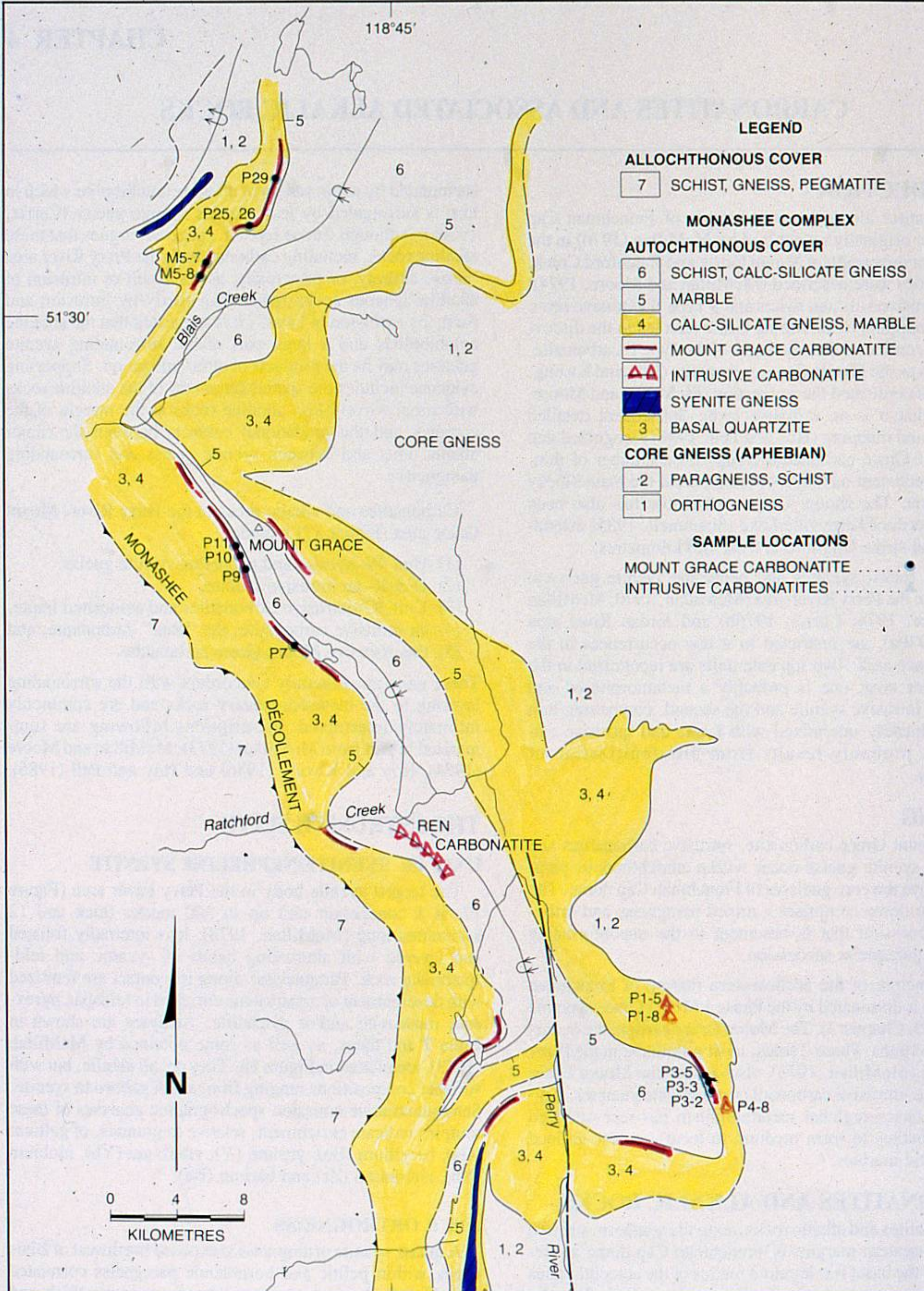
		CRATONIC N. AMERICA				
	PERIOD	QUESNEL	KOOTENAY	MONASHEE	NORTH AMERICA	TECTONICS-MAGMATISM
CENOZOIC						
MESOZOIC	CRETACEOUS					
	JURASSIC	Rossland				
	TRIASSIC	Ymir	Slocan			
PALEOZOIC	PERMIAN		Kaslo			
	PENN.		Fennell			← rifting
	MISS.		Eagle Bay			← arc-rifting
	DEV.		Milford			← rifting
	SIL.		Lardeau			← basic magmatism
	ORD					
	CAMB.					
PROTEOROZOIC	HADRYNIAN					← block faulting ?
	HELIKIAN					← basic magmatism
	APHEBIAN					← rifting ← basic magmatism

● clastic-hosted Pb/Zn
 ■ carb.-hosted Pb/Zn

◆ volcanogenic (rift)
 ● volcanogenic (arc)

(T. Hoy, 1988)

MT. GRACE CARBONATITE - DISTRIBUTION



MT. GRACE CARBONATITE - SECTIONS

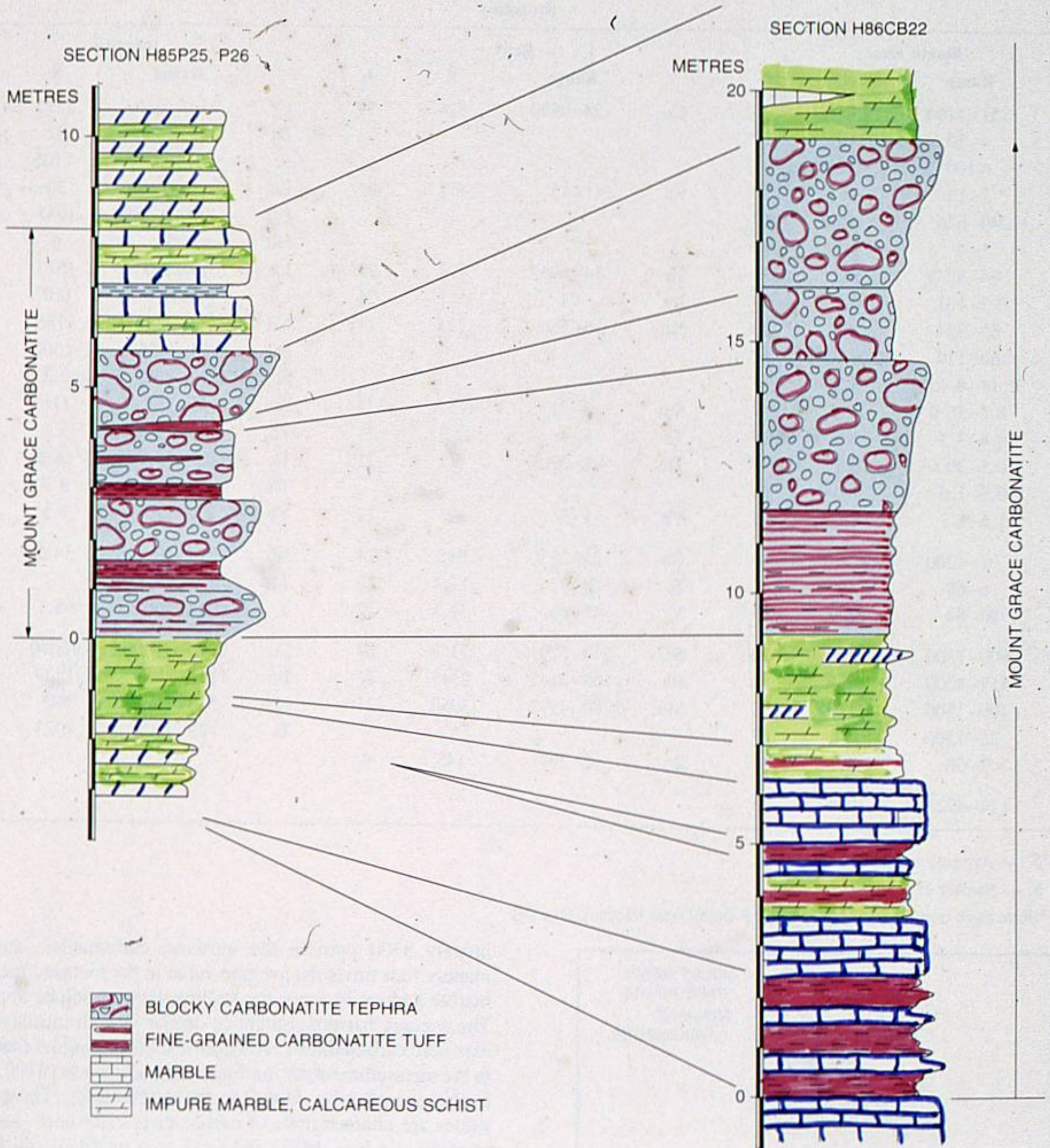
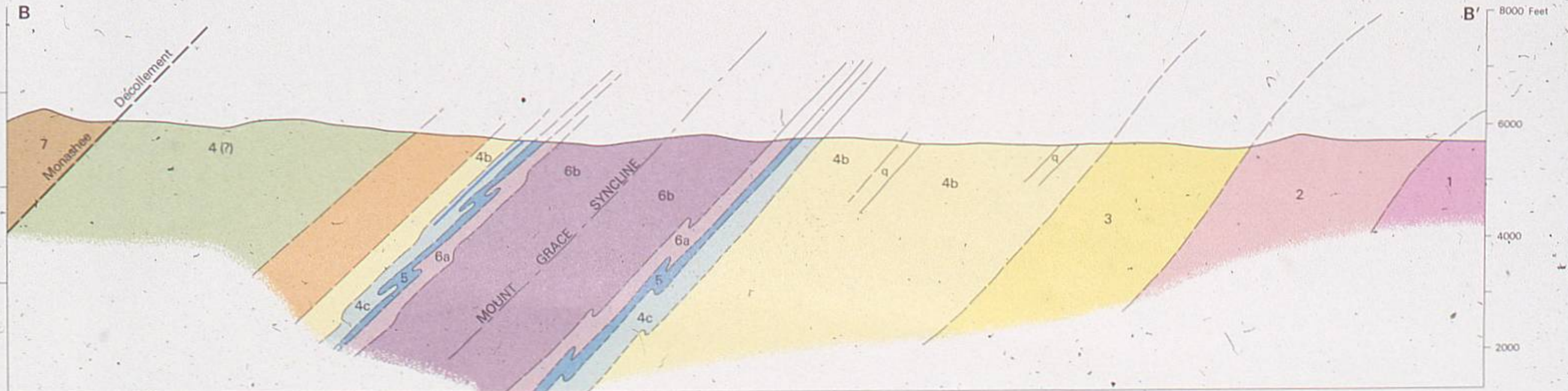
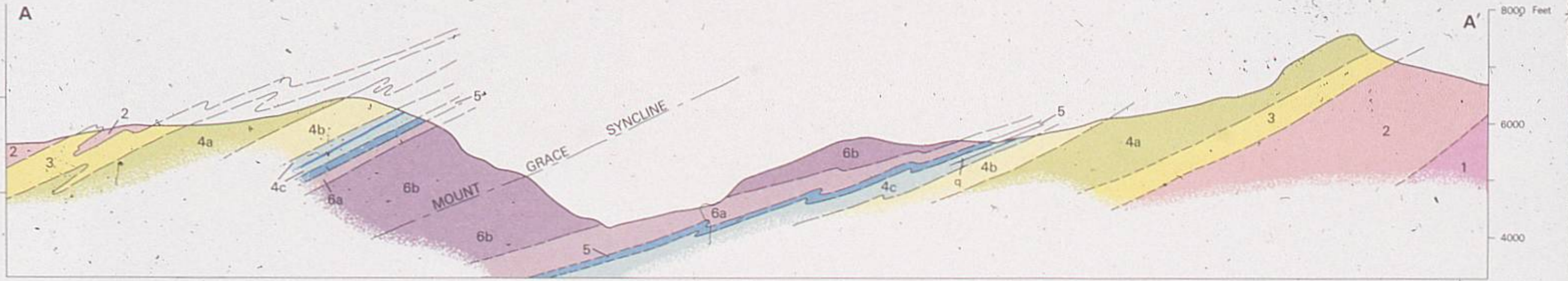


Figure 25. Detailed sections of the Mount Grace carbonatite, Blais Creek area (stations H85P25, H85P26 and H86CB-22).



SHUSWAP DEPOSITS - TECTONIC SETTING

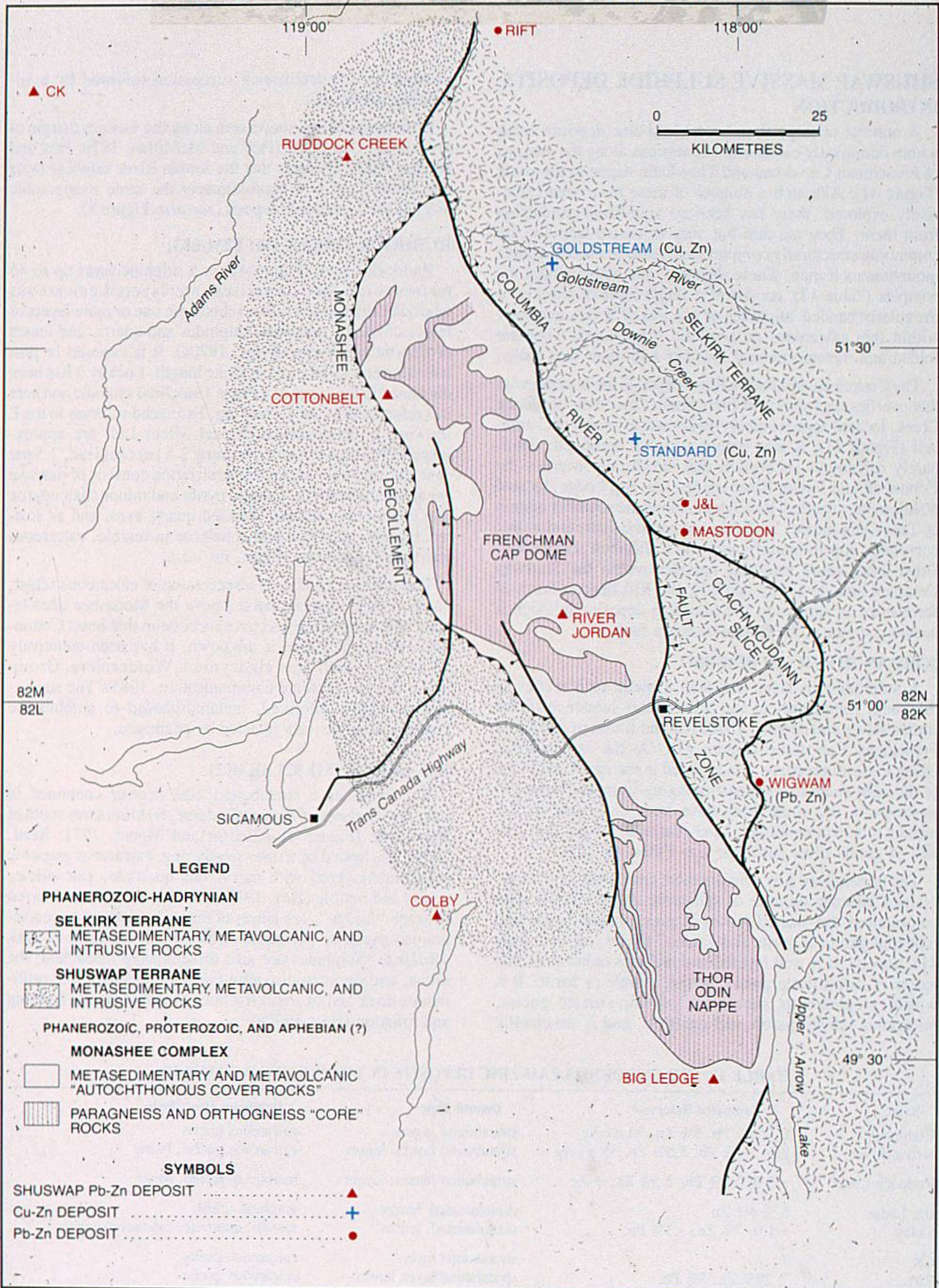
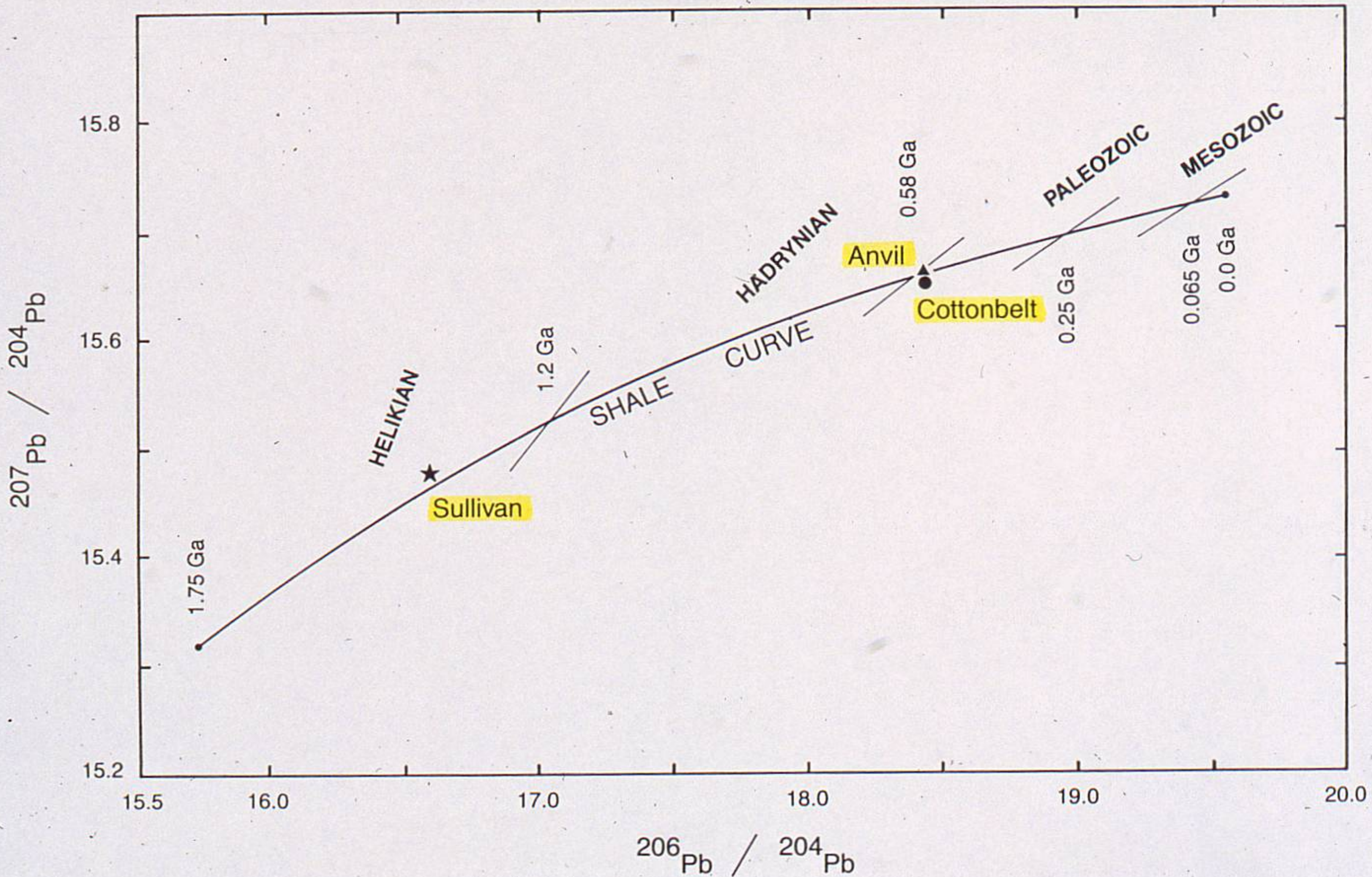


Figure 41. Tectonic setting and location of Shuswap deposits, southeastern British Columbia.

Pb ISOTOPE DATA - COTTONBELT



CAMBRIAN

Pb-Zn "Iron formation"

LAGOONAL

evaporitic
limited sulphate
low Ph-Eh

unit 6

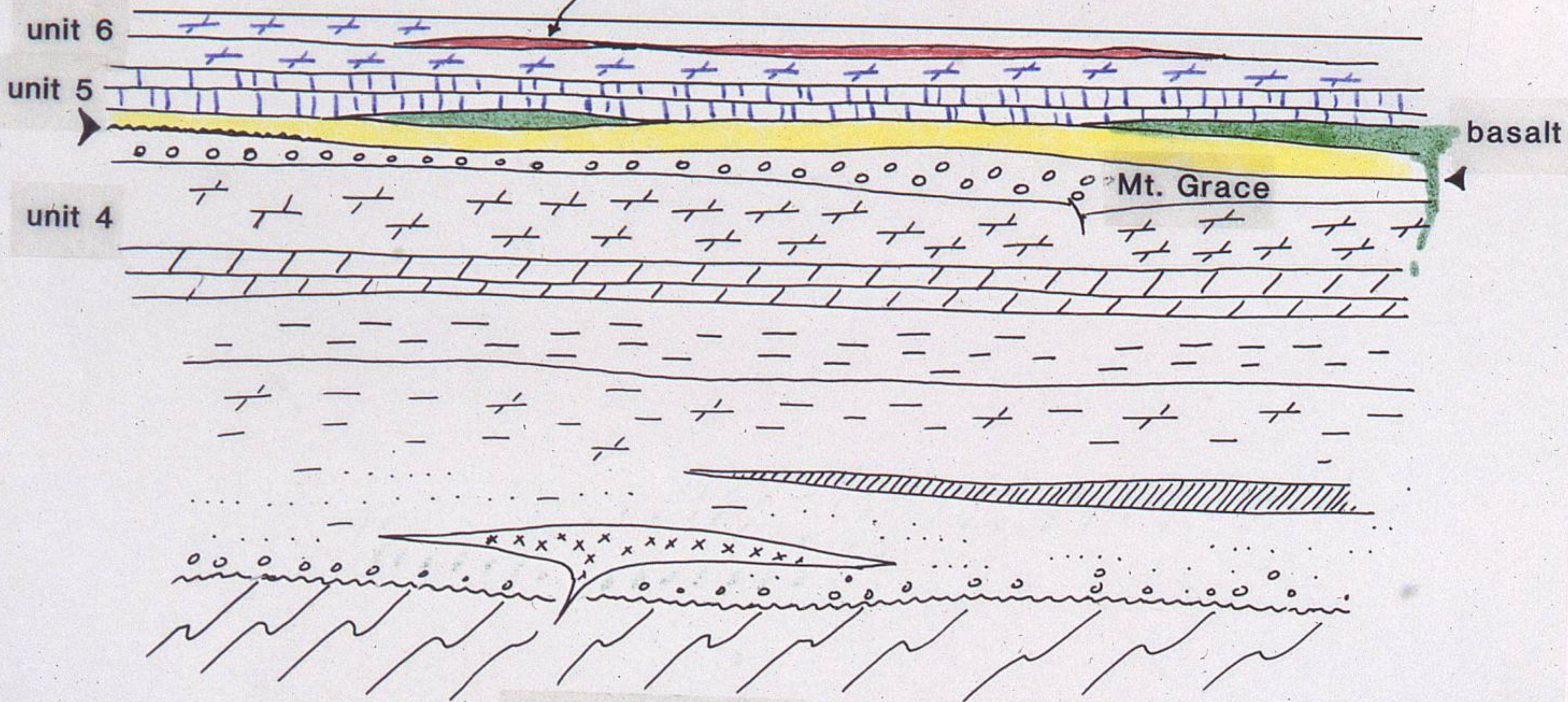
unit 5

unit 4

basalt

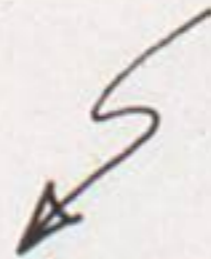
Mt. Grace

Aphebian basement



HADRYNIAN

SHALLOW MARINE



Mt. Grace Ct.

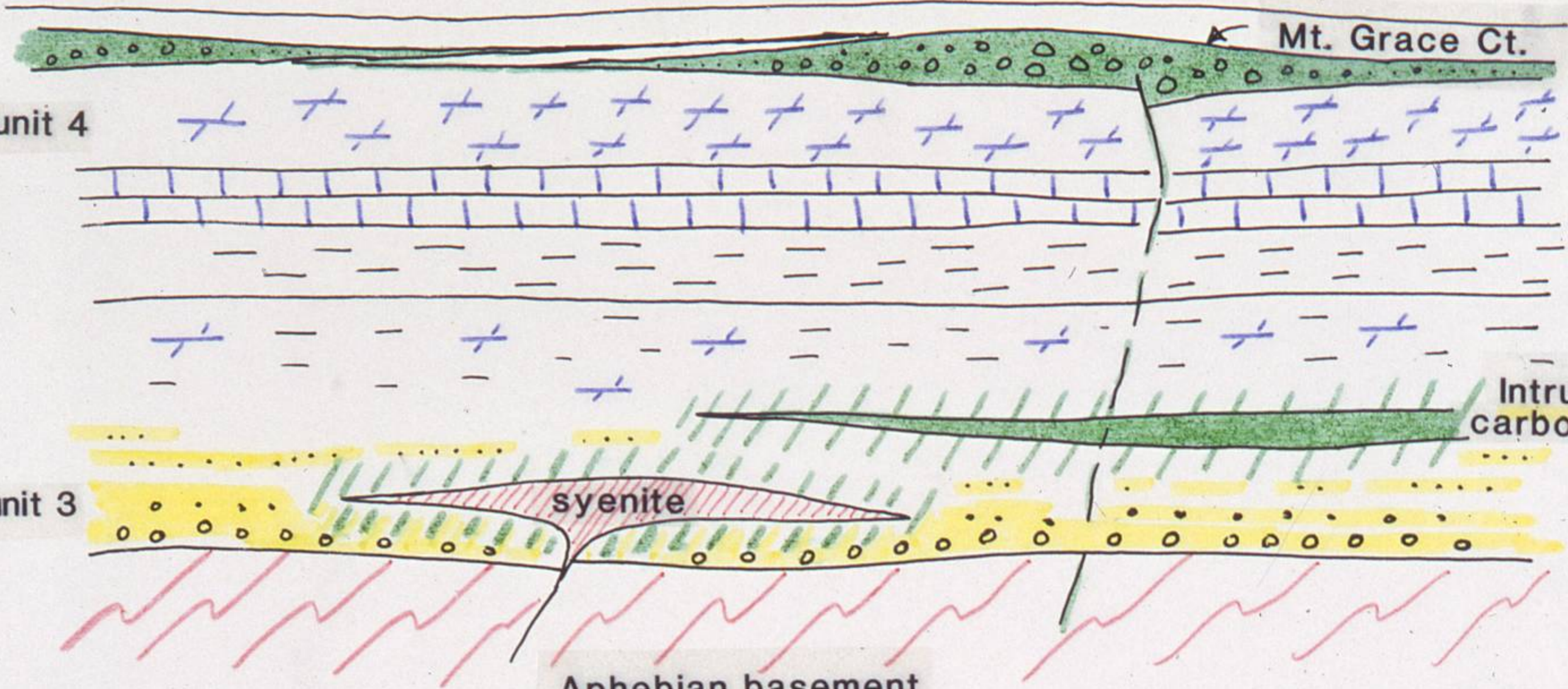
unit 4

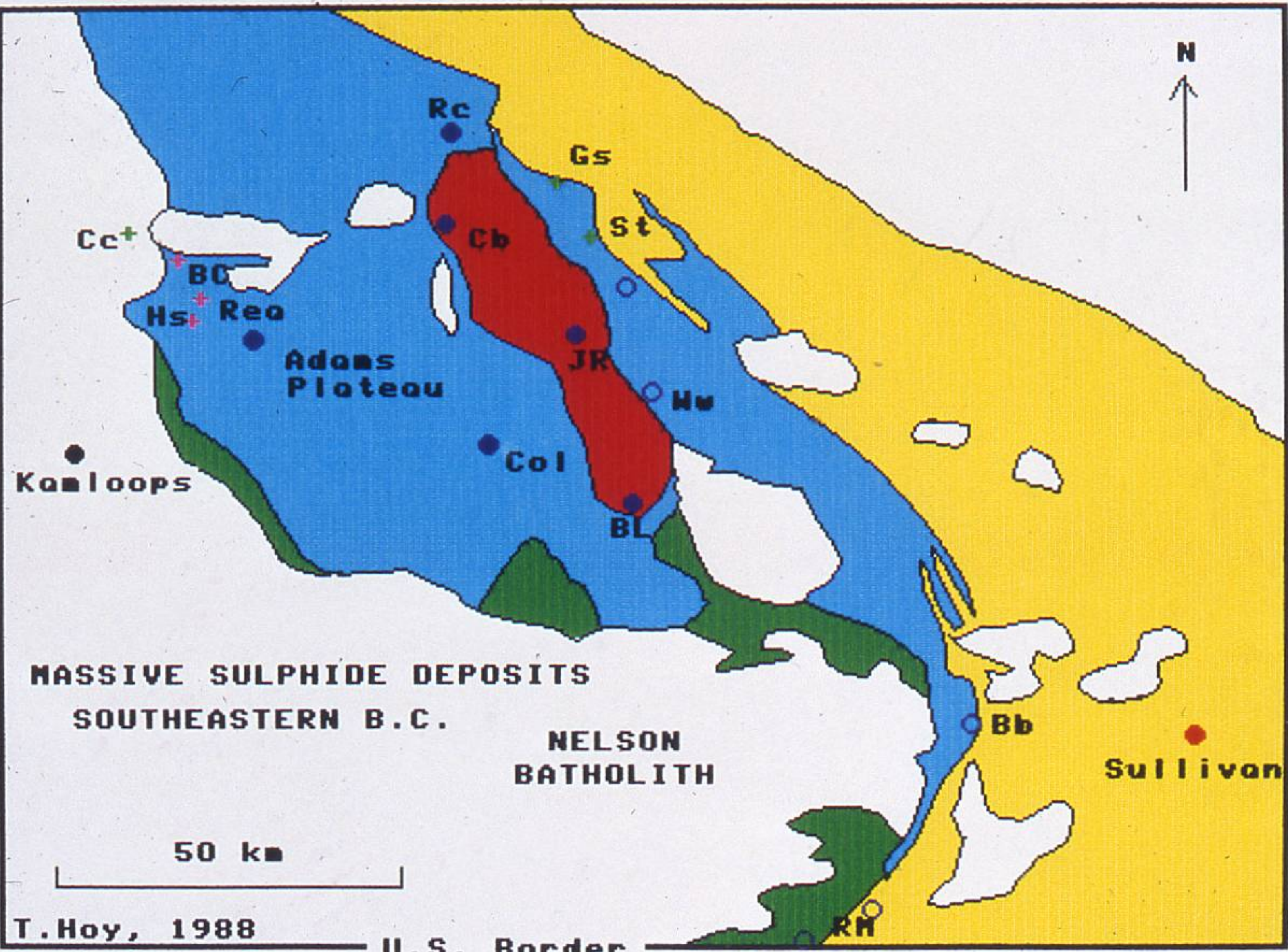
Intrusive
carbonatite

unit 3

syenite

Aphebian basement



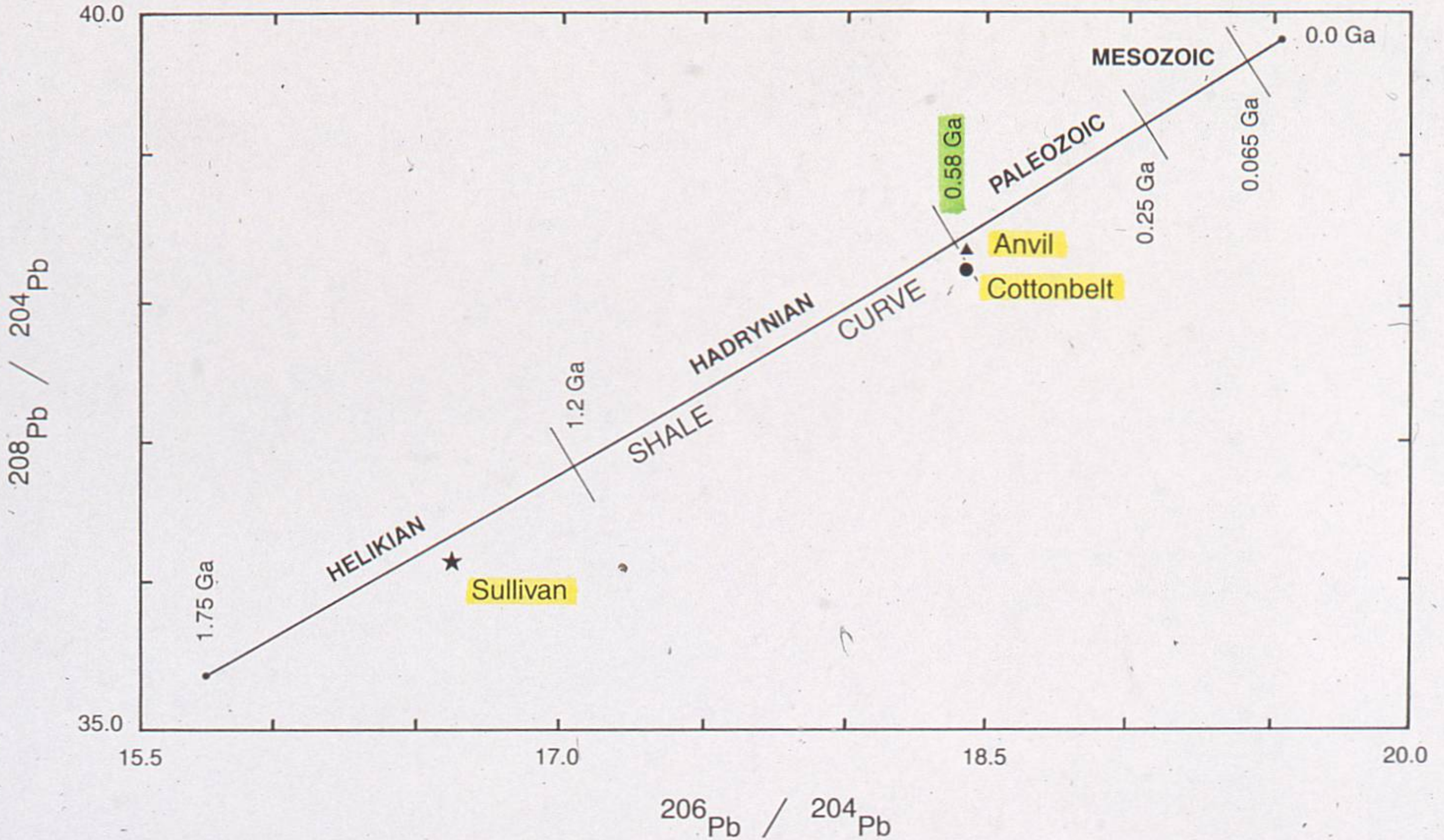


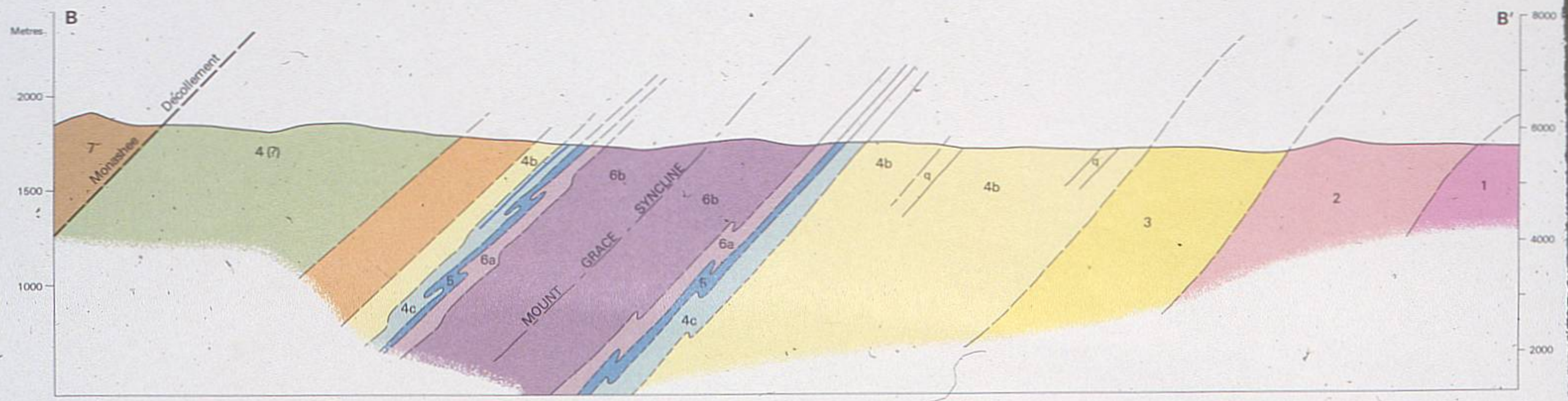
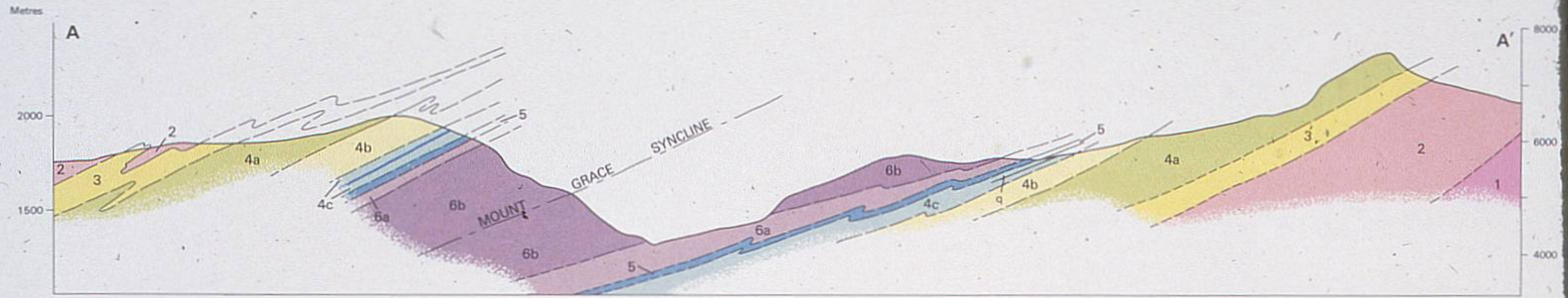
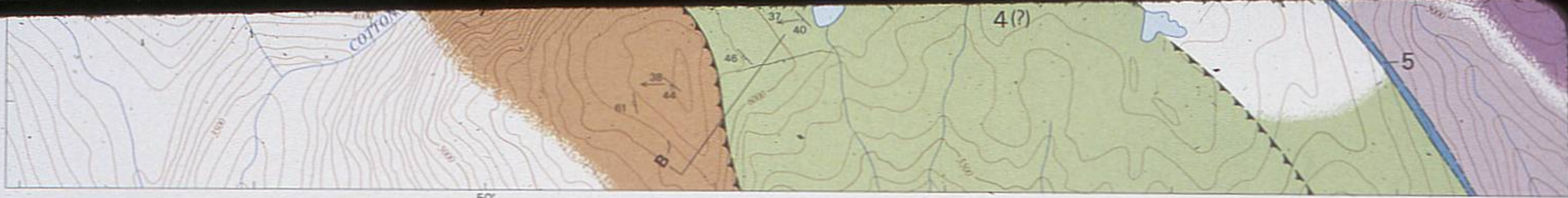
- VOLCANOGENIC**
- + Arc-related
 - + Rift-related
- SEDIMENTARY**
- Cambrian Clastic
 - Cambrian Carbonate
 - mid-Proterozoic
- TERRANES**
- Quesnel
 - Kootenay
 - North America
 - Monashee

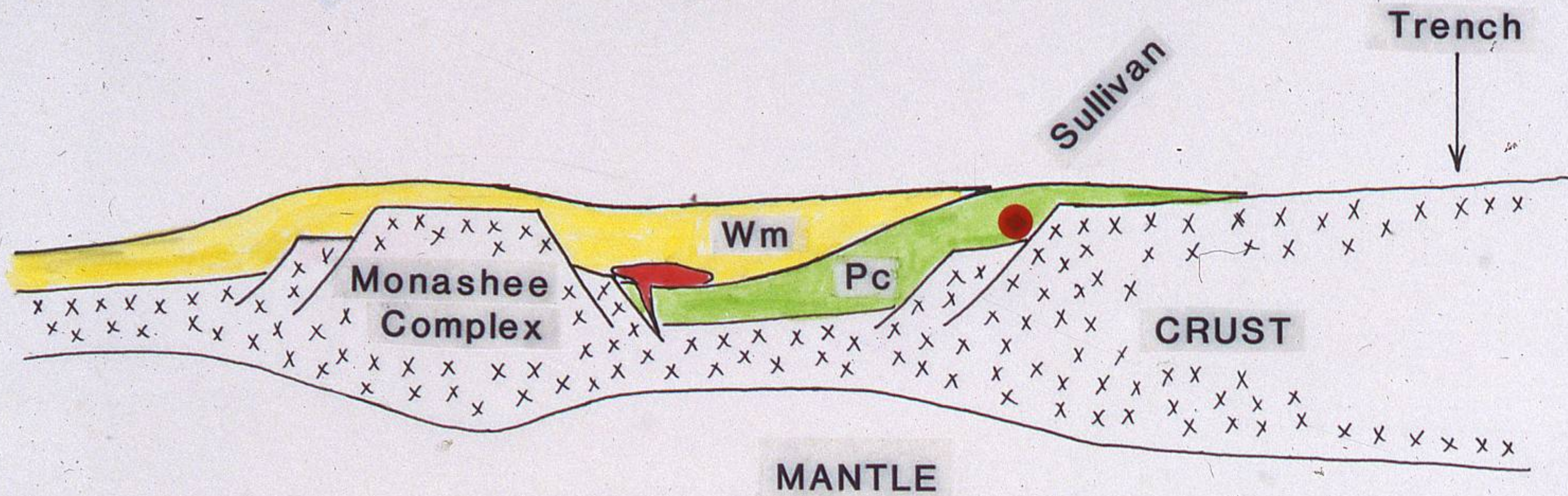
50 km

T. Hoy, 1988

Pb ISOTOPE DATA - COTTONBELT







PROTEROZOIC

COTTONBELT SECTIONS

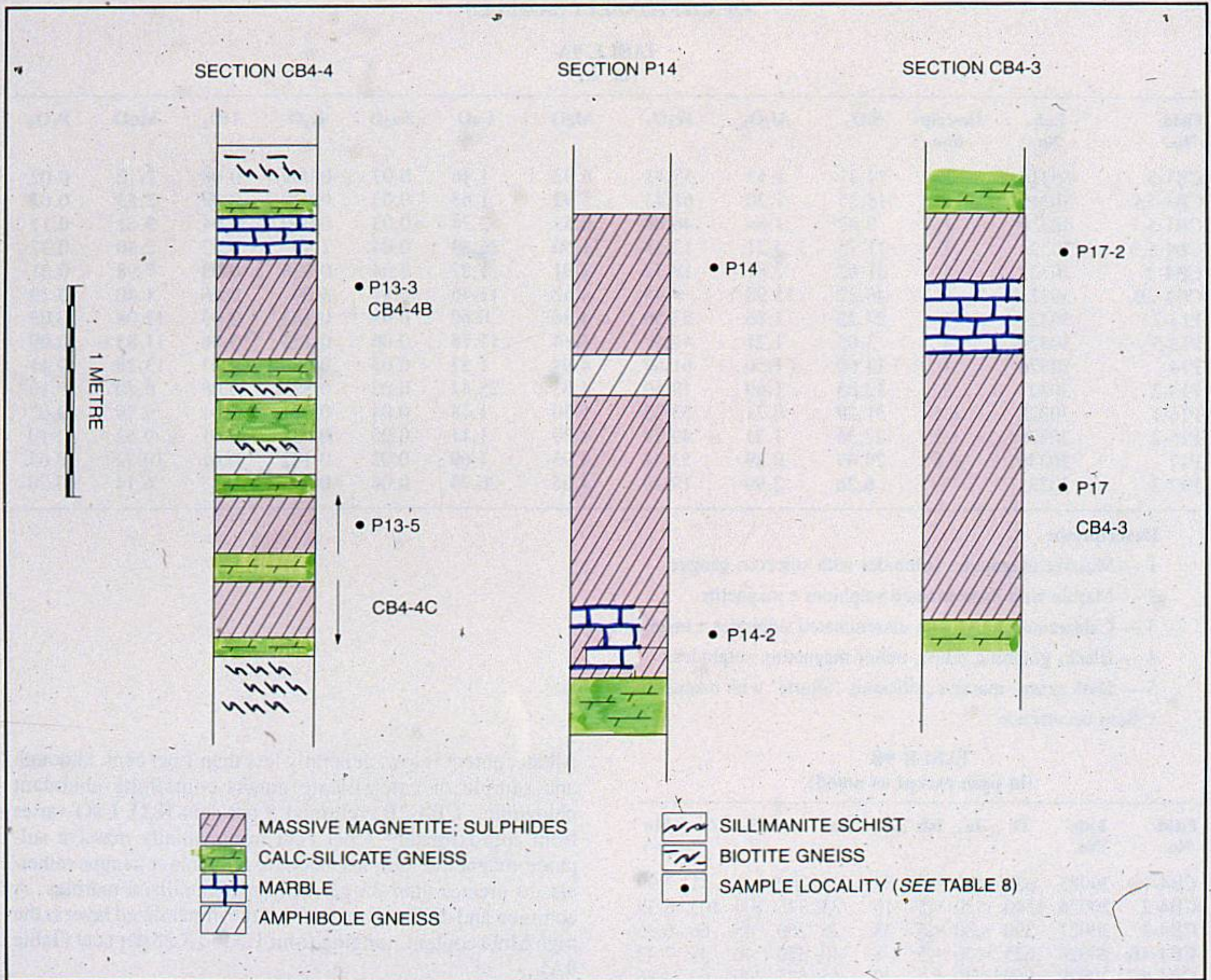


Figure 37. Detailed sections through the Cottonbelt sulphide-magnetite layer and location of analysed samples.