

OOTSA LAKE GROU

SMITHERS FM

TELKWA FM



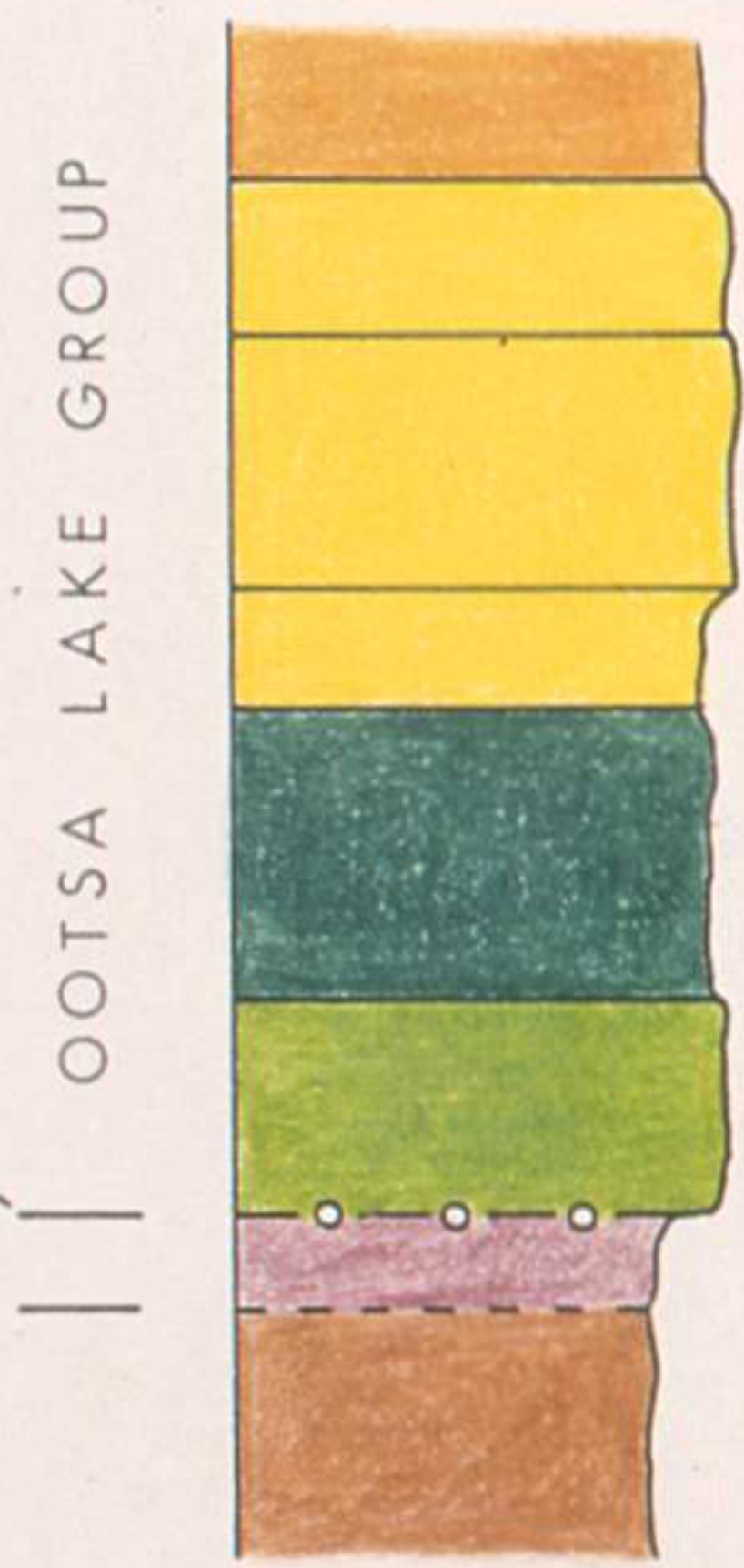
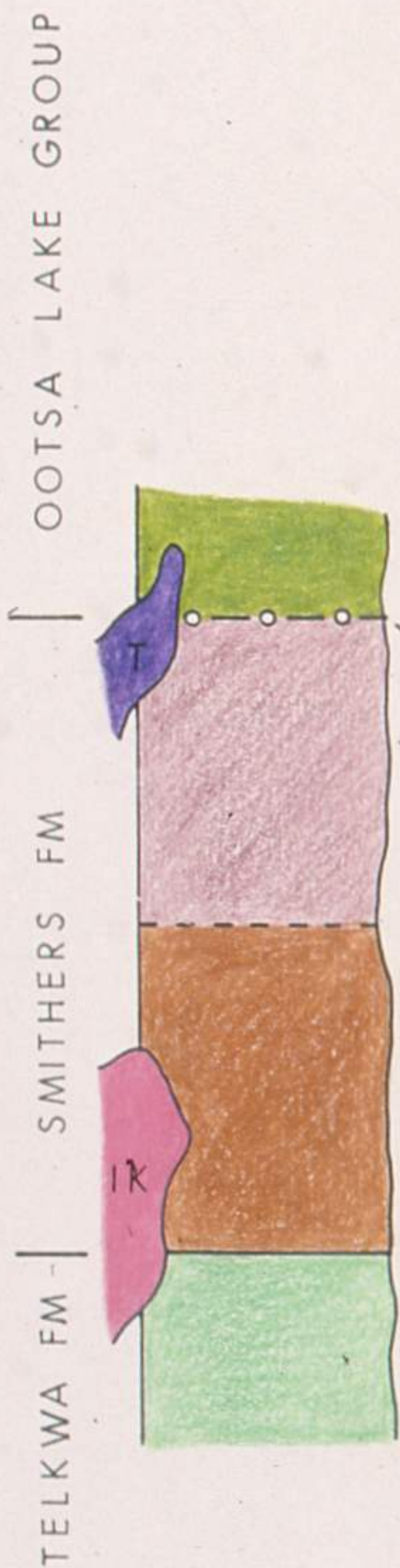
PERVASIVE HYDROTHERMAL ALTERATION: silica, clay minerals,  
pyrite ± barite



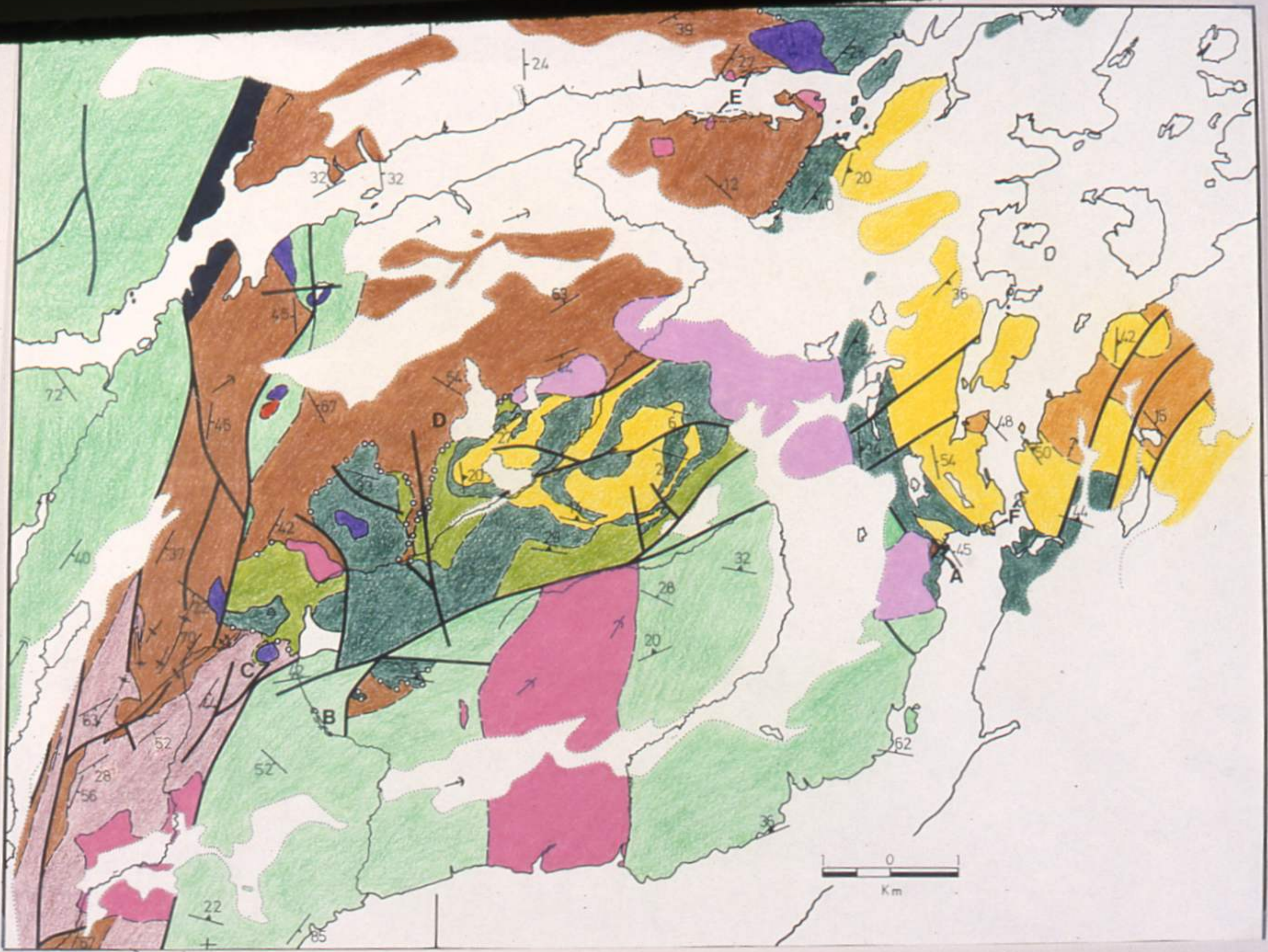
VEINS : quartz - calcite ; (Au), Py, As, Pb, Zn, Cu

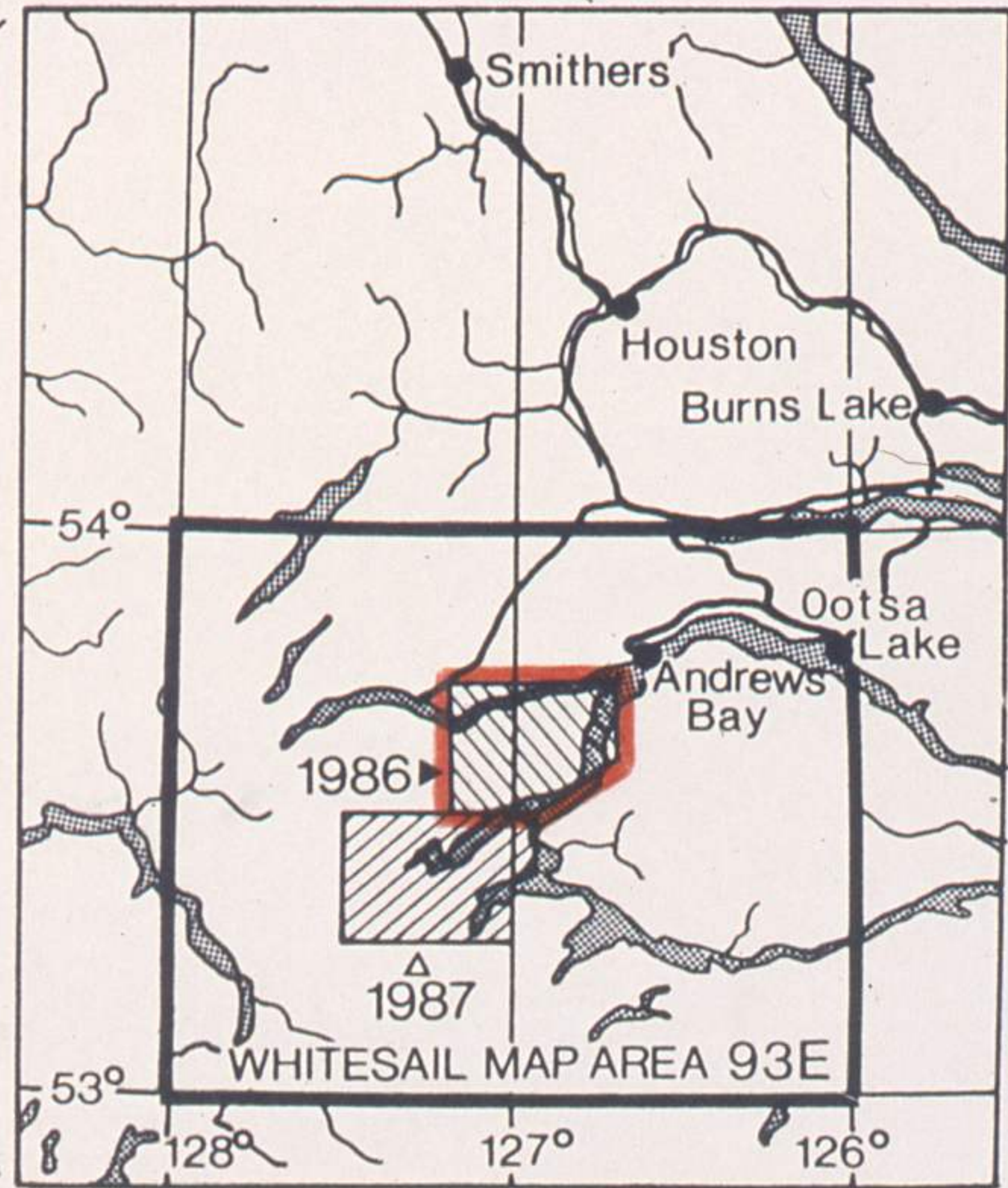
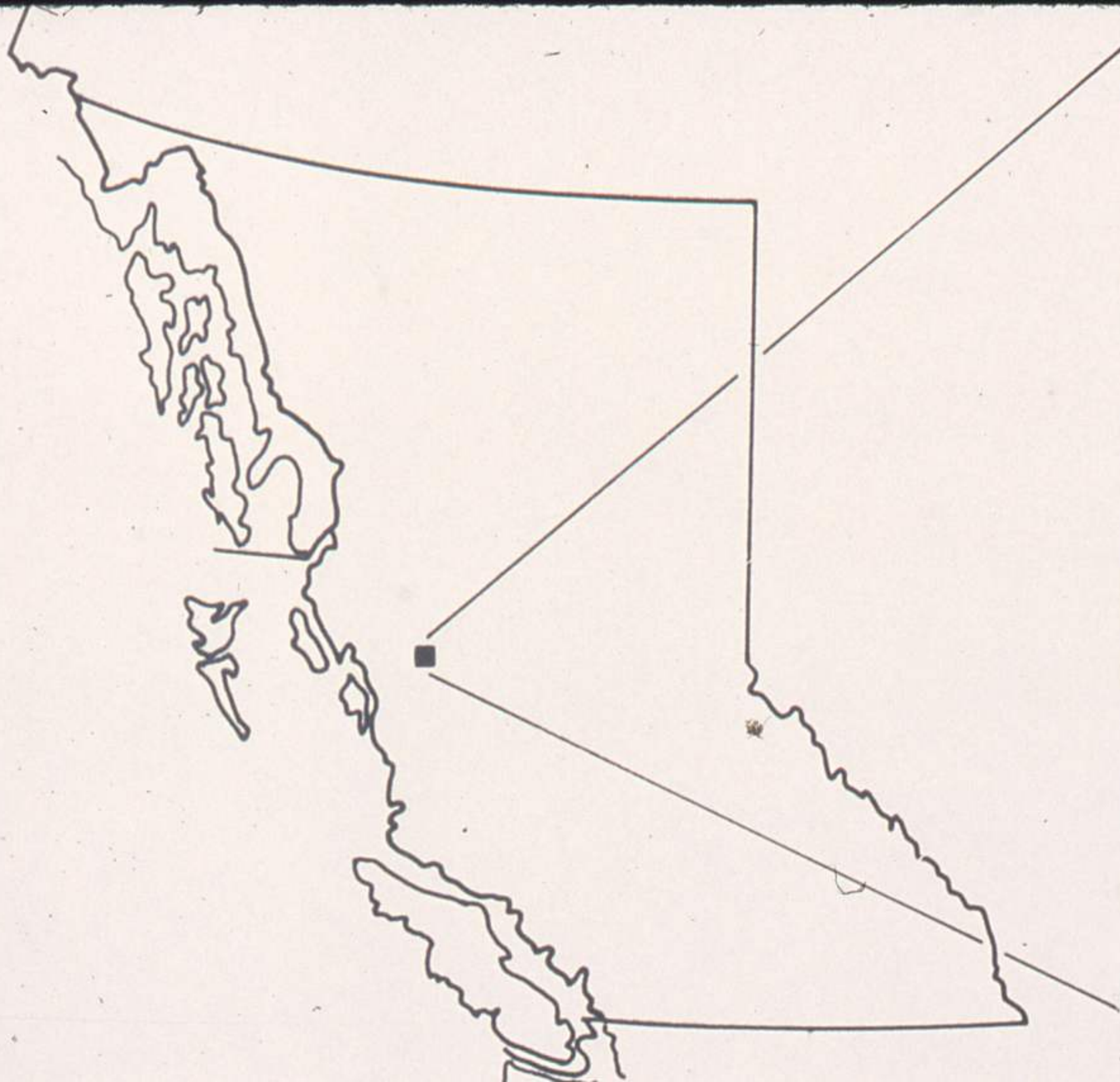
West & Southwest  
Whitesail Range

Northeast Whitesail Range  
Whitesail - Tathsu Reach



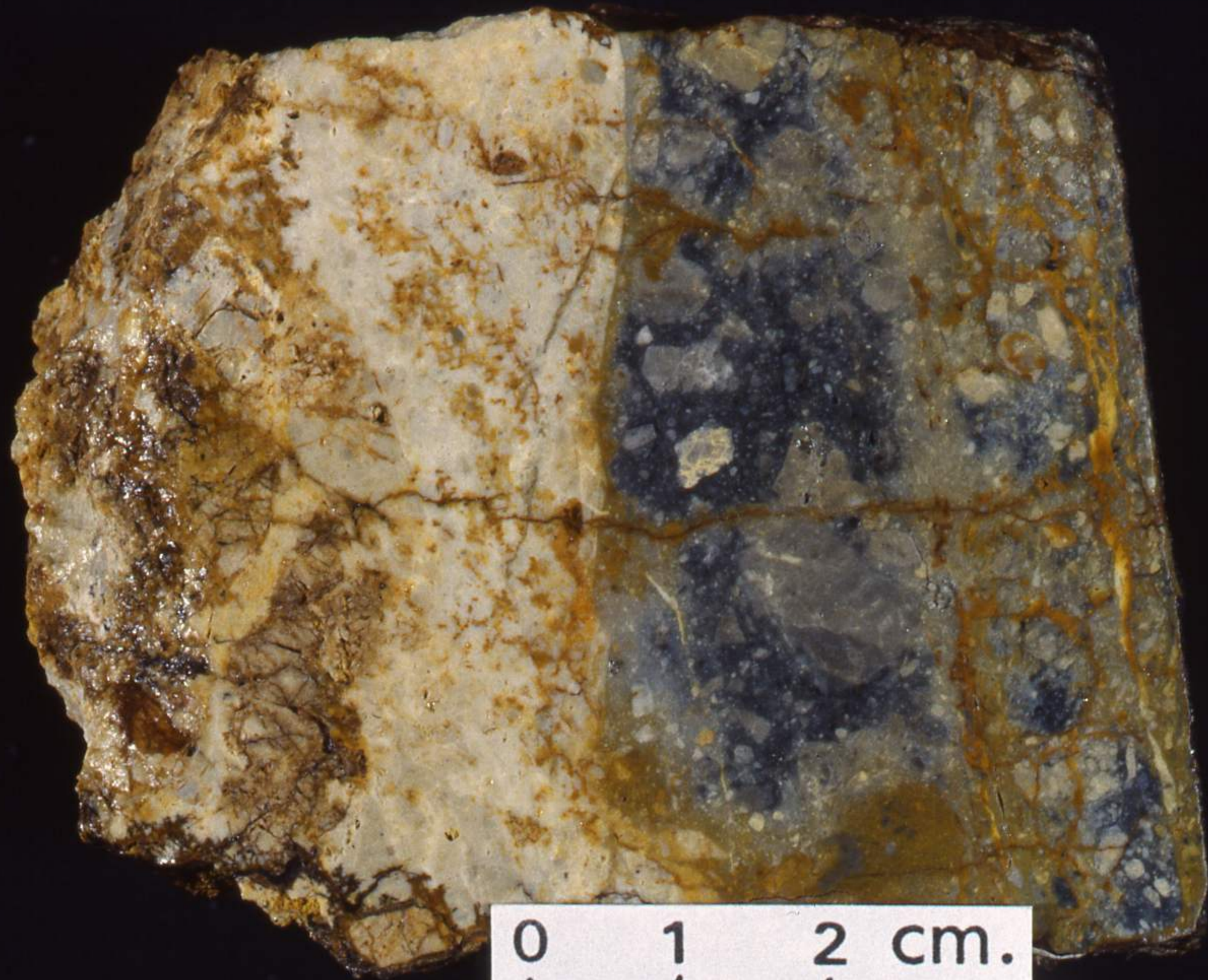
- unconformity
- - - gradational contact
- I 100 metres







0 1 2 cm.



0 1 2 cm.

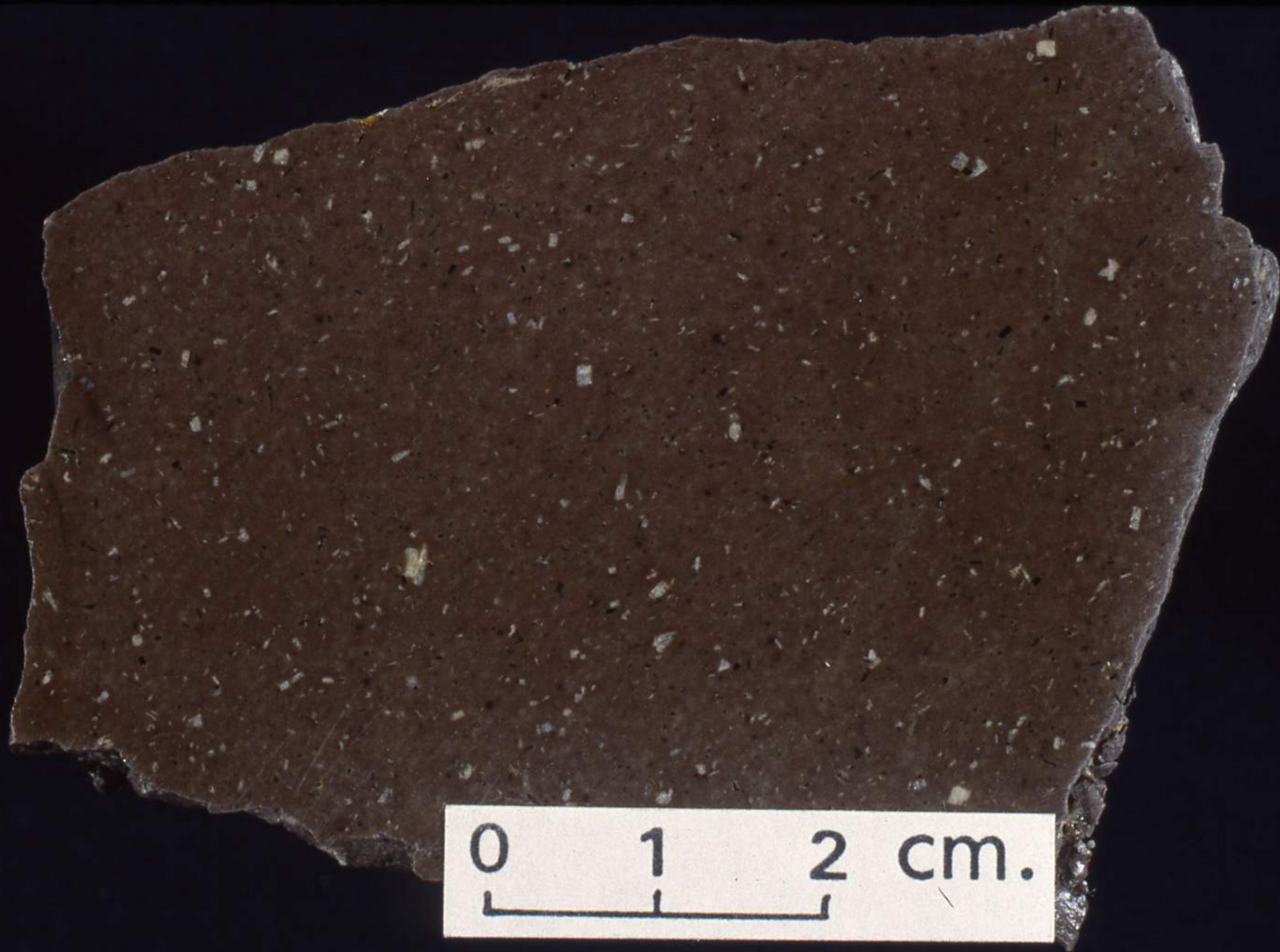


0 1 2 cm.





0 1 2 cm.







0 1 2 cm.

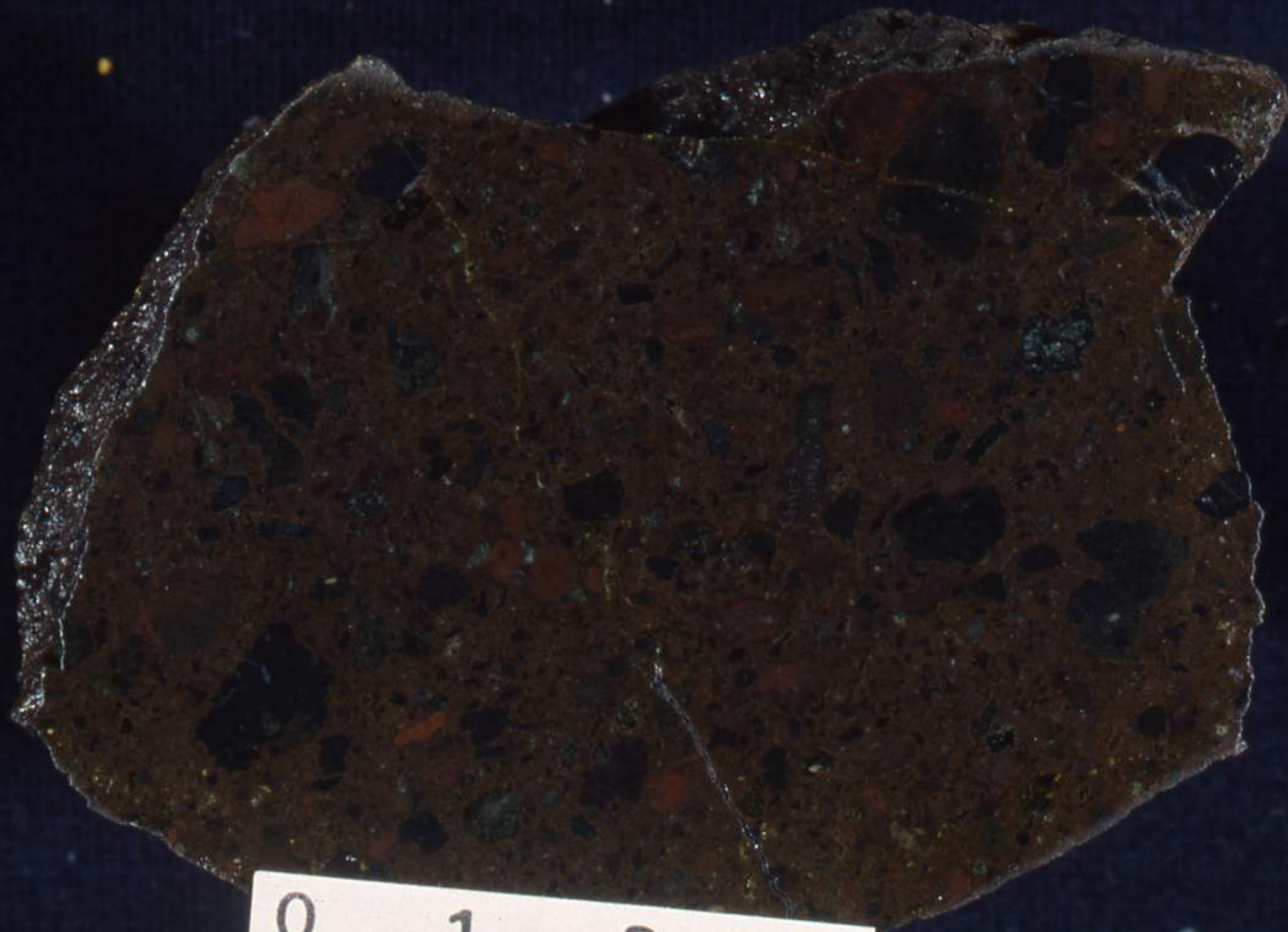


0

1

2

cm.



0 1 2 cm.

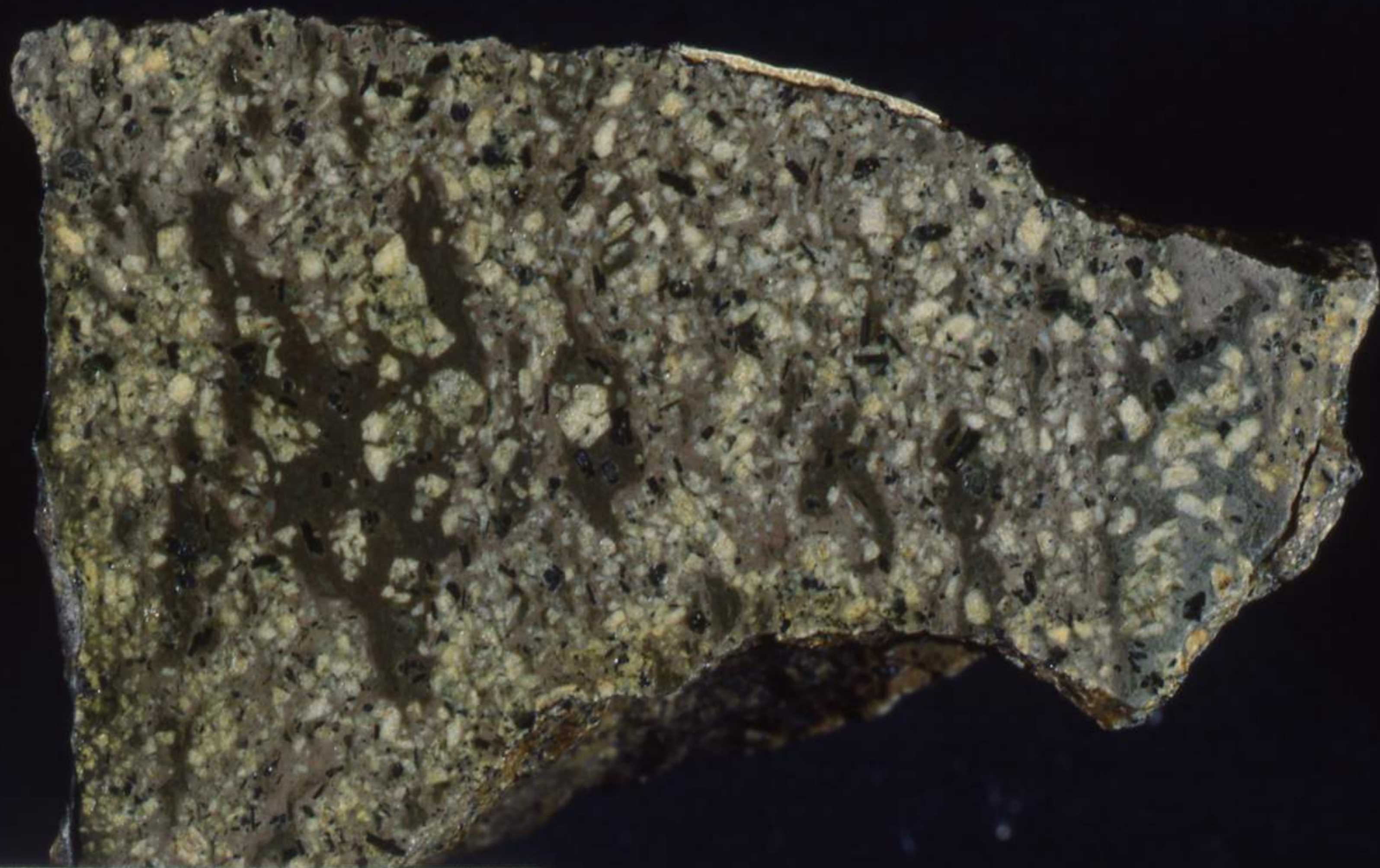
0  
1  
2 cm.



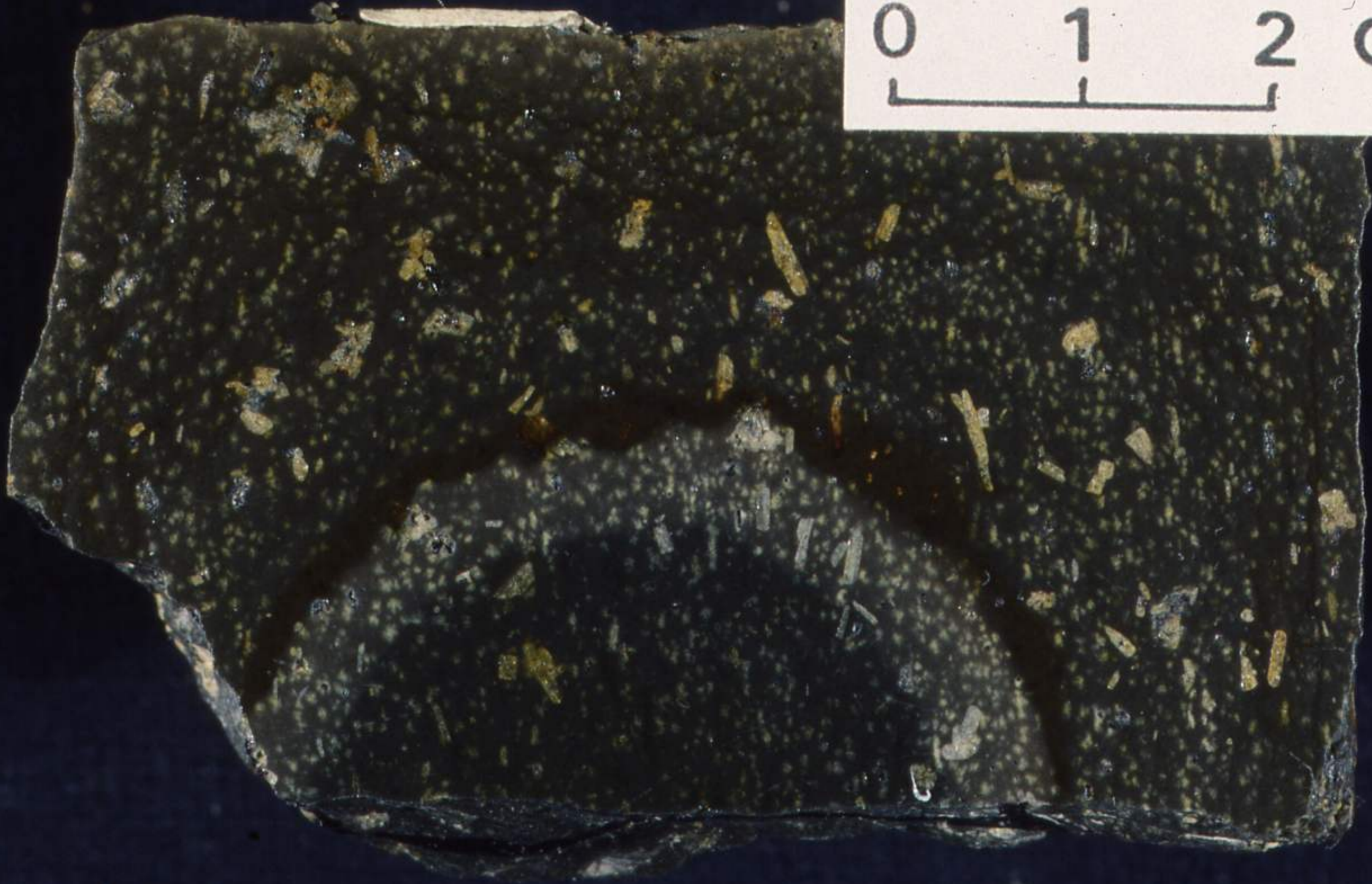


0 1 2 cm.

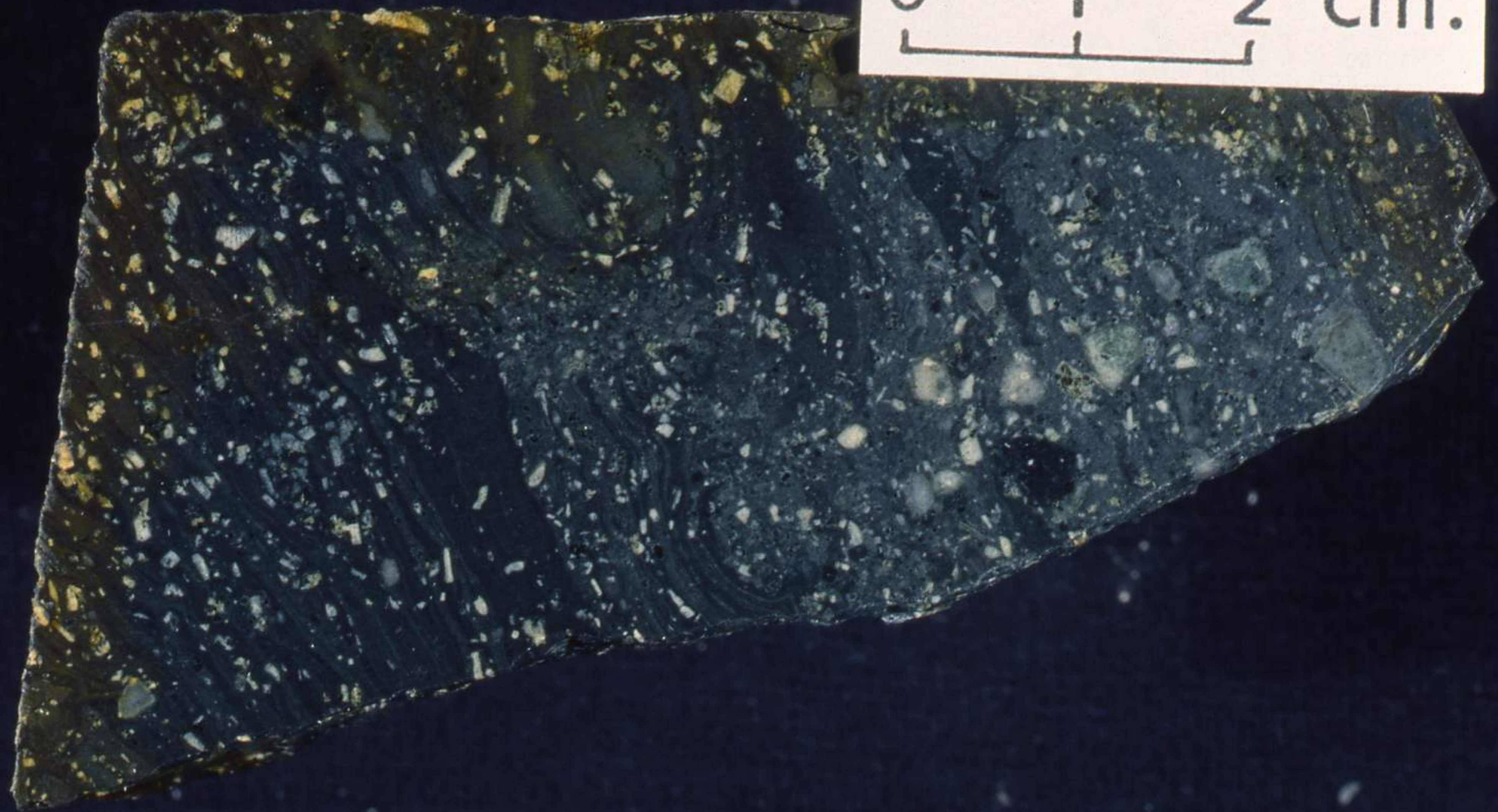




0 1 2 cm.



0 1 2 cm.



0 1 2 cm.

